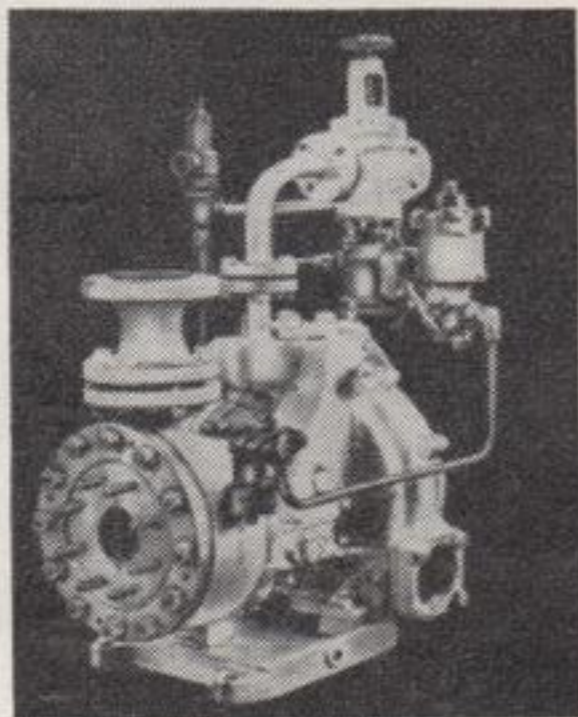


SPECIFY **COFFIN**
TURBO PUMPS

For minimum
steam
consumption

Capacities
to 500 GPM

Pressures
to 1100 PSI



Designed specifically for boiler feed service, these single stage, high pressure Coffin Pumps save space, weight and steam. Every pump assembled from standard stock parts replaceable without fitting. Write for catalog.

THE J. S. COFFIN Jr. COMPANY
ENGLEWOOD, NEW JERSEY
Representatives in all Principal Cities

Vessel	Fleet No.	Vessel	Fleet No.
Makawell	107	Maumee	193
Makefjell	79	Maunaloa II	197
Malden	123	Maurits, Prins	145
Malietao	152	Mayer, Oscar F.	74
Mancox	209	MC-1	33
Manicouagan	159	MC-2	33
Manilla	90	McAlpine, Jas. E.	20
Manion, Paul	46A	McBride, Sam	189
Manistee	195	McCarthy, T. J.	119
Manitowoc	200	McCool, Daniel (see J. B. John)	
Manseau No. 101	116	McCormick, John A.	74
Mantadoc	146	McCullough Jr., C. H.	150
Manuel, John S.	90	McDougald, John A. (see Eastern Shell)	
Manzutti	209	McFarland, O. S.	143
Mapleheath	26	McGean, W. H.	90
Marguerite T.	177	McGonagle, W. A.	152
Marguerite W.	75	McGuire, Dr. Walter G.	74
Marigold	112	McKee, Geo.	116
Marine Derrick No. 14	167	McKellar, J. O.	46A
Marine Derrick No. 17	167	McKinney, Price	90
Marine Derrick No. 18	167	McLauchlan, Wm.	150
Marion	74	McLean, N. B.	28
Markham, Gen. E. M.	74	McQueen, Patricia	123
Marny M.	122	McWatters, J. N.	46A
Marquette	44	Mead, George W.	118
Marsala	90	Meadcliffe Hall	83
Martha C.	74	Meaford	26
Martha E.	106	Medill, Joseph	39
Martian	26	Meldrum, H. A.	118
Mary C.	74	Menasha	67
Maryland	14	Menominee	195
Maryland	78	Mervine II	131
Mascot	138	Meteor	45
Massachusetts	78	Mexoil	69
Massey, F. V.	134	Meyers, Carl W. (nee Crescent City)	22
Mataafa	140	Michigan	44
Mather, Samuel	150	Michigan	74
Mather, William G.	44	Michigan	78
Mathewston	46A	Michigan	127
Mathilda	175	Michigan	182
Mathiott, E. G.	143	Midland City	70
Matton #20	118	Midland Prince	26
Matton, Edna M.	118		
Matton, John E.	118		
Matton, Margaret	118		
Matton, Ralph E.	118		