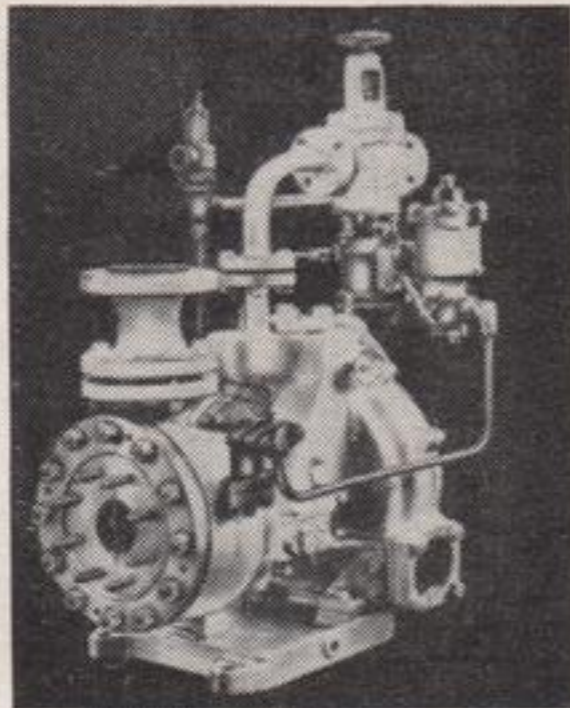


SPECIFY **COFFIN**  
**TURBO PUMPS**

For minimum  
steam  
consumption

Capacities  
to 500 GPM

Pressures  
to 1100 PSI



Designed specifically for boiler feed service, these single stage, high pressure Coffin Pumps save space, weight and steam. Every pump assembled from standard stock parts replaceable without fitting. Write for catalog.

**THE J. S. COFFIN Jr. COMPANY**  
ENGLEWOOD, NEW JERSEY  
Representatives in all Principal Cities

Vessel	Fleet No.	Vessel	Fleet No.
Coulby, Harry	159	Deschaillons	122
Coverdale	27	Descheneaux	122
Cowan, William P.	188	Desdemona	121
Cowle, John B.	81	Detroit	41
Craftsman	211	Detroit	209
Crapo, S. T.	92	Detroit Edison	17
Crawford, G. G.	160	Detroit	99
Crawford, W. D.	89	Dompaco	169
Crest	78	Donnacona	27
Crete	159	Donnacona No. 2.	169
Croft, Harry W.	159	Donnacona No. 3.	169
Curran, James W.	98	Donnelly, Charles.	147
Currie, General	161	Doner, W. H.	14
Cushing, John F.	78	Douglass, Edwin T.	206
Cygnus	121	Doville, R. E.	90

## D

D. M. No. 5	122	Dramis	122
Daisy	161	Drill Scow No. 6	128
Dalton, Henry G.	159	Dubbs, James A.	78
Damia	96	Dubrulle, Joseph	163
Daniels, William H.	206	Dunkirk	82
Dark, Samuel J.	78	Dunlap, Chas. E.	196
Davidson, James	196	Dunn, Sir James	27
Davidson, Jas. E.	196	Dunn Jr., John	81
Davin, John W.	136	Dupre Jr., Yvon	184
Delver	161	Durstun, J. F.	81
Detector	29		
Diamond Alkali	17		
Dick, Charles	144		
Dickinson, Paul W.	78		
Dickson, Wm. B.	160		
Dinkey, Alva C.	160		
Dixon	202		
Dixon, Frank	28		
Dean, S. M.	164		
Delaware	82		
Dalkote	62		
Deluge	138		
Denmark	81		
Denny	171		
Derrick No. 4	128		
Derrick No. 5	128		
Derrick No. 8	122		
Derrick No. 10	122		

## E

Eads, James B.	206
Eaglescliffe Hall	87
Eastern Shell	181
Eastern States	58
Eaton, George L.	87
Eccles	143
Edenborn, Wm.	160
Edmonton	27
Edna G	63
Edward K.	106
Edwards, C. P.	29
Eglinton Park	183
Eider	131
Elba	17
Elfriede	121
Elgin	27
Ellwood, Isaac L.	160