

TELESCOPE

March-April, 1967

Volume 16, No. 3&4



**Great Lakes
Maritime
Institute**



**Dossin Great Lakes Museum,
Belle Isle, Detroit 7, Michigan**

Having reached the respectability of a fifth edition, our Seaway Salties feature has cumulatively grown into a useful body of information on ocean ships visiting the lakes each season. The five Seaway issues offer a body of information not available elsewhere; the ship registers of ocean vessels do not distinguish which vessels have a lake history.

In sizing up the value of these Seaway issues, we have had to choose between a list published as close as possible to the end of the shipping season in question, and one which is as complete and accurate a record as possible. We have given preference to the latter, not only for the length of time it takes to produce a list such as this. On the one hand, we find that many ocean visitors repeat regularly, while a similarly large proportion trade with the lakes for only a single season, probably only a single trip. Since we cannot anticipate at season's beginning which will be these latter vessels, river watchers will not be much more inconvenienced by having a two-year-old list rather than a one-year-old one. And on the other hand, there are very many ocean ships which change hands and names just before their first lake visit; there is a long time lag before these vessels appear in print in the sources consulted for filling out this list. Accordingly, there would be great gaps in our List "A", and List "B" would be almost inconceivable at an earlier publishing date.

Our first issue of Seaway Salties was prepared by Donald Baut of Detroit for Telescope of May, 1962, containing only the List "A", describing ocean visitors for the seasons of 1959 to 1961; thus our List "A" is complete back to the opening of the Seaway. George Ayoub of Ottawa contributed the List "B" beginning in our second Seaway issue, for Telescope of May, 1963, covering the 1962 season. Two other Seaway issues were published in September, 1964 (for 1963), and May, 1966 (for 1964). In all of these issues, the photographs of Emory Massman have been a popular feature for the List "A". That there are not more of his pictures in this issue is due to an editorial mistake of ordering views from the 1966 season, many of which were not relevant to 1965. Photographs for the List "B" come from the collections of George Ayoub and Donald Baut.

As the production of Seaway issues involves perhaps the work that goes into at least three normal issues of Telescope, it seems proper to recognize this fact in dating this issue as a "double" one for March and April. We should also note that our "sample" is a bit more restricted this year, as it is taken from vessel passages reported for the Welland Canal, and thus lacks those ships that came no further than Lake Ontario. In the three previous lists, we had used a source reporting ships transitting the upper St. Lawrence River.

--Gordon Bugbee, Editor for this issue

Cover view: A Don Baut photo of pre-Seaway freighter Heilo, which also came to the lakes as Spind and Capetan Vassilis. Under the last name, she was lost in the Mediterranean in 1965. She is of special interest for having been built at Superior, Wisconsin, during the Second World War, as Tully Crosby.

Introduction

| | | | |
|--|--------|------|---------------|
| <i>Beeverpine</i> (Br) Canadian Pacific SS | 371x53 | 1962 | 0.0.0.1.4.4.3 |
| <i>Belgien</i> (De) Det Dansk-Franske D/S | 412x54 | 1954 | 0.0.0.0.0.4.4 |
| <i>Bellami</i> (No) Georg Vefling, mgr. | 492x66 | 1962 | 0.0.0.1.0.0.1 |
| <i>Bel Mare</i> (Sw) A/B August Leffler & Son | 533x64 | 1953 | 0.0.0.0.0.0.1 |
| <i>Beltana</i> (No) Georg Vefling, mgr. | 500x66 | 1962 | 0.0.0.2.0.1.2 |
| <i>Belvera</i> (No) Christen Smith Shpg., mgr. | 518x64 | 1959 | 0.0.1.2.1.0.2 |
| <i>Bengazi</i> (No) Olsen | 350x47 | 1947 | 3.3.3.3.1.3.2 |
| <i>Bengkalis</i> (Du) N. V. S. M. "Nederland" | 514x65 | 1953 | 0.0.0.0.0.1.2 |
| <i>Bernd Leonhardt</i> (Ge) Leonhardt & Blumberg | 485x61 | 1955 | 0.0.0.0.0.3.3 |
| <i>Betaluna</i> (Gr) Cia. Beta de Vapores S. A. | 442x57 | 1944 | 0.0.0.0.0.0.1 |
| <i>Beth</i> (No) L. Gill-Johannssen, mgr. | 492x70 | 1962 | 0.0.0.0.0.0.1 |
| <i>Bia River</i> (Gh) Black Star Line Ltd. | 455x63 | 1965 | 0.0.0.0.0.0.2 |
| <i>Bintang</i> (Du) N. V. S. M. "Nederland" | 462x59 | 1950 | 0.0.1.1.2.0.1 |
| <i>Birgit Ragne</i> (Sw) Swedish-Chicago | 374x50 | 1961 | 0.0.3.3.3.4.3 |
| <i>Biscaya</i> (No) Fearnley & Eger, mgr. | 258x40 | 1958 | 0.0.0.0.0.0.1 |
| <i>Bogatyr</i> (De) Rederi A/S "Myren" | 479x62 | 1958 | 0.0.0.0.0.0.1 |
| <i>Bonita</i> (No) A/S Uglands Rederi | 337x49 | 1954 | 0.0.0.0.2.0.1 |
| <i>Bordabere</i> (Li) Ramon de la Sota Jr., mgr. | 341x50 | 1945 | 0.0.0.0.0.0.2 |
| <i>Borealis</i> (No) F. Olsen & O. R. Thoreson | 376x53 | 1948 | 4.3.3.2.3.3.3 |
| <i>Borgholm</i> (Sw) Swedish-American Line | 303x42 | 1951 | 3.3.2.2.2.2.3 |
| <i>Braheholm</i> (Sw) Swedish-American Line | 431x58 | 1951 | 0.2.3.3.3.3.3 |
| <i>Bregaglia</i> (Ss) Oceana Shipping S. A. | 575x73 | 1961 | 0.0.0.5.3.1.2 |
| <i>Breim</i> (No) A/S Borgestad | 496x66 | 1961 | 0.0.0.0.0.0.2 |
| <i>Brilliance</i> (Li) Concord Nav. Corp. | 518x65 | 1949 | 0.0.0.0.0.0.1 |
| <i>Brimmes</i> (Ic) Government of Iceland | 194x30 | 1947 | 0.0.0.0.0.0.1 |
| <i>Bristol City</i> (Br) Bristol City Line of SS | 460x59 | 1959 | 0.0.0.0.0.0.2 |
| <i>Broholm</i> (Sw) Rederi A/B Timex | 456x57 | 1943 | 0.0.0.0.0.1.1 |
| <i>Broriver</i> (Sw) Rederi A/B Timex | 423x56 | 1946 | 0.0.0.0.0.0.4 |
| <i>Buenos Aires Maru</i> (Ja) Mitsui - O.S.K. | 494x63 | 1956 | 0.0.0.0.0.0.2 |
| <i>Byklefjell</i> (No) Fjell-Oranje Line | 435x58 | 1952 | 3.4.3.4.3.4.4 |
| <i>Bysanz</i> (No) A/S Borga | 335x45 | 1947 | 3.1.2.1.0.1.1 |

C

| | | | |
|---|--------|------|--------------------------------|
| <i>Calliope</i> (Li) Helicon Mar. Co. | 512x57 | 1943 | 0.0.0.0.0.2.2 |
| <i>Camellia</i> (Br) Stag Line (J. Robinson) | 435x56 | 1953 | 3.3.0.0.1.2.4 |
| <i>Canadia</i> (Sw) O. M. Thore, mgr. | 456x57 | 1939 | 0.0.0.0.0.0.4 |
| <i>Capo Mele</i> (It) Gestione Esercizio N. Sicil. Formerly in Seaway trade as <i>Pierre L. D.</i> | 471x60 | 1951 | 0.0.3.3.3.3.3 3.3.0.0.0.0.0 |
| <i>Capo Noli</i> (It) Gest. Esercizio N. Sicil. Formerly in Seaway trade as <i>La Ensenada</i> | 471x60 | 1951 | 0.3.3.3.4.3.3 2.0.0.0.0.0.0 |
| <i>Capetan Costis I</i> (Gr) Elpis Cia. Nav. Formerly in Seaway trade as <i>Polyktor</i> | 512x57 | 1944 | 0.0.0.0.0.0.3 0.0.0.2.0.0.0 |
| <i>Captain John</i> (Gr) Bright Star SS Co. | 523x66 | 1947 | 0.0.0.0.1.1.1 |
| <i>Captain Lemos</i> (Gr) Marero Cia. Nav. | 442x57 | 1943 | 0.0.0.0.0.0.1 |
| <i>Carl Julius</i> (Ge) Toepfer | 471x58 | 1954 | 1.3.2.4.3.3.3 |
| <i>Carl Trautwein</i> (Ge) Alfred G. Toepfer | 509x70 | 1960 | 0.0.3.2.1.1.3 |
| <i>Carlsholm</i> (Sw) Swedish-American Line | 305x42 | 1951 | 3.3.2.2.2.2.2 |
| <i>Caroline Smith</i> (Sw) Swedish-Chicago Line | 299x43 | 1956 | 3.2.3.3.3.4.3 |
| <i>Carrigan Head</i> (Br) Ulster SS Co. | 459x62 | 1958 | 0.0.2.1.4.4.3 |

| | | | |
|--|--------|------|---------------|
| <i>Cate Brovig</i> (No) Selvagg-Bygg | 523x68 | 1952 | 1.2.1.0.0.2.2 |
| <i>Catherine</i> (Fr) Union Industrielle & Mar. | 495x62 | 1963 | 0.0.0.0.0.3.1 |
| <i>Catherine Sartori</i> (Ge) Sartori & Berger | 298x42 | 1954 | 3.4.3.3.2.3.4 |
| <i>Cayman</i> (Sw) Rederi A/B Salenia | 444x57 | 1956 | 0.0.0.0.0.0.3 |
| <i>Chee Lee</i> (Ch) Far Eastern Nav. Corp. | 442x57 | 1943 | 0.0.0.0.0.0.1 |
| <i>Chicago</i> (Fr) French Line | 450x63 | 1959 | 1.0.2.4.3.4.4 |
| <i>Chio</i> (Li) Ocean Cargo Line Ltd. | 522x66 | 1956 | 0.0.0.0.0.0.1 |
| <i>Christiane Schulte</i> (Ge) Bernh. Schulte | 276x42 | 1959 | 0.2.1.0.0.2.3 |
| <i>Christine</i> (Fr) Union Ind. & Mar. Soc. Fr. | 496x62 | 1963 | 0.0.0.0.4.4.5 |
| <i>Cimbria</i> (Ge) Christian F. Ahrenkiel | 503x62 | 1956 | 0.0.0.0.0.0.2 |
| <i>Cis Brovig</i> (No) Th. Brovig | 506x62 | 1948 | 2.2.0.0.0.2.1 |
| <i>Cissoula</i> (Gr) Aristides SS Co. S. A. | 431x57 | 1940 | 0.0.4.0.0.0.2 |
| <i>Clarita Schroder</i> (Ge) Richard Schroder | 396x54 | 1959 | 0.0.0.0.1.0.3 |
| <i>Clemens Sartori</i> (Ge) Hamburg Chicago Line | 285x42 | 1955 | 3.3.3.3.2.3.3 |
| <i>Cleveland</i> (Fr) French Line | 450x63 | 1960 | 0.0.4.3.4.3.2 |
| <i>Clio</i> (Ge) Parlenrederi M. S. Clio | 321x47 | 1958 | 3.2.0.1.0.3.3 |
| <i>Clivia</i> (Ge) Hermann Daulsberg, mgr. | 425x54 | 1955 | 0.0.0.0.0.3.3 |
| <i>Colina</i> (Br) Donaldson Line | 295x45 | 1960 | 0.5.5.5.4.2 |
| <i>Colytto</i> (Du) Hudig and Veder, mgr. | 476x62 | 1957 | 0.0.0.0.1.3.1 |
| <i>Cordoba</i> (Ge) Aug. Bolten et al, mgr. | 350x48 | 1958 | 0.0.3.3.0.0.2 |
| <i>Crystal Bell</i> (Br) Sugar Line (Athel) | 461x61 | 1955 | 0.0.2.4.1.2.2 |
| <i>Crystal Crown</i> (Br) Sugar Line (Athel) | 461x61 | 1957 | 0.1.2.4.0.1.2 |
| <i>Crystal Cube</i> (Br) Sugar Line (Athel) | 461x61 | 1955 | 1.2.1.1.0.2.2 |
| <i>Crystal Gem</i> (Br) Sugar Line (Athel) | 461x61 | 1956 | 4.1.1.1.5.0.1 |
| <i>Crystal Jewel</i> (Br) Sugar Line (Athel) | 461x61 | 1956 | 0.1.2.1.1.1.2 |
| <i>Crystal Sea</i> (Sw) Trelleborgs Angfartygs | 445x58 | 1961 | 0.0.0.1.1.1.1 |
| <i>Cydonia</i> (Br) Stag Line (Jos. Robinson) | 434x57 | 1955 | 0.0.0.2.1.4.3 |
| <i>Cypress</i> (No) A/S Rederiet Odfjell, mgrs. | 508x68 | 1963 | 0.0.0.0.0.0.3 |

D

| | | | |
|---|--------|------|---|
| <i>Dagan</i> (Is) Zim Israel Nav. Co. Ltd. | 386x53 | 1954 | 1.3.2.3.3.3.3 |
| <i>Dageid</i> (No) A/S Ocean | 506x68 | 1963 | 0.0.0.0.2.3.2 |
| <i>Dahlia</i> (Is) Allseas Shipping Co. | 463x61 | 1961 | 0.0.0.0.0.0.1 |
| <i>Dea Brovig</i> (No) Th. Brovig | 531x68 | 1951 | 0.1.2.0.1.3.3 |
| <i>Dealmouth</i> (Br) Dealship Ltd. Formerly in Seaway trade as <i>Seaway Star</i> | 523x68 | 1949 | 0.0.0.3.5.5.5 2.4.0.0.0.0.0 |
| <i>Degero</i> (Fi) Mariehamns Rederi A/B | 356x47 | 1953 | 0.0.0.0.0.4.2 |
| <i>Demetra</i> (Li) Aegean Shipping Co. Inc. Formerly in Seaway trade as <i>Rossana</i> Formerly in Seaway trade as <i>Tiryns</i> | 442x57 | 1944 | 0.0.0.0.0.0.1 0.0.0.0.0.0.1 3.0.0.0.0.0.0 |
| <i>Diala</i> (No) Chr. J. Reim | 258x38 | 1952 | 3.3.4.1.0.2.1 |
| <i>Dianet</i> (No) Chr. J. Reim, mgr. | 382x53 | 1962 | 0.0.0.1.1.1.1 |
| <i>Dinar</i> (No) A/S Dione | 392x53 | 1965 | 0.0.0.0.0.0.1 |
| <i>Divina</i> (No) A/S Frisco | 258x38 | 1951 | 0.0.0.1.1.2.2 |
| <i>Dona Io</i> (Li) Demosthenes Nav. S. A. Formerly in Seaway trade as <i>Troma</i> | 521x68 | 1950 | 0.0.0.0.0.0.1 0.0.4.1.0.0.0 |
| <i>Donatella Parodi</i> (It) "Amicizia" S. di N. | 483x63 | 1957 | 0.0.0.0.0.0.1 |
| <i>Dromon</i> (Gr) Marathon Cia. de Vapores Formerly in Seaway trade as <i>Hydroussa</i> Formerly in Seaway trade as <i>Mycenae</i> | 512x57 | 1943 | 0.0.0.0.0.2.1 0.2.0.2.0.0.0 0.1.0.0.0.0.0 |

Dunnet Head (Br) A. F. Henry & MacGregor 193x31 1953 0.0.0.0.0.0.1
 Later in Lake trade in Canadian ownership as *Conrad Marie* (ii)
Durham Trader (Br) Trader Nav. Co. Ltd. 478x62 1959 0.0.0.0.0.0.1

E

East River (Li) International Nav. Corp. 571x72 1954 0.0.4.3.1.0.2
Eckero (Fi) Rederi A/B Valborg 356x47 1953 0.0.0.0.0.1.3
Egle (It) Cia. di Nav. Guisepppe Mazzini 555x74 1953 0.0.0.0.0.1.1
EK (No) A/S Rederiet Odfjell, mgr. 333x45 1963 0.0.0.0.1.0.1
Elin Hope (No) Jacob Kj de A/S 508x62 1961 0.0.0.1.0.2.2
Elisabeth Schulte (Ge) Schulte & Bruns 284x42 1956 0.0.1.1.3.3.1
Elise Schulte (Ge) Schulte & Bruns 259x39 1958 4.5.3.5.5.5.5
Elpis (Gr) Cia. Fletera Cajotamil S. A. 493x57 1944 0.0.0.3.0.0.2
Emma Johanna (Ge) Alfred G. Toepfer 509x70 1960 0.0.1.3.2.3.1
Enterprise (Gr) Enterprisse Cia. Nav.S.A. 484x59 1945 0.0.0.0.0.0.1
Erato (Ge) Hans Kruger G.m.b.H. 306x41 1957 0.0.0.0.3.3.4
 Formerly in Seaway trade as *Erika Bischoff*
Ercta (It) Cia. Siciliana di Armamento 480x63 1951 0.0.0.0.0.0.1
Eretria (Gr) Marestellia Cia. Nav. S. A. 424x57 1943 0.0.0.1.0.0.3
Eshkol (Is) Zim Israel Nav. Co. Ltd. 444x58 1964 0.0.0.0.0.2.3
Esperos (Gr) Atlantis Shipping Co. S. A. 508x67 1957 0.0.0.0.0.0.1
Etrog (Is) Zim Israel Nav. Co. Ltd. 444x58 1964 0.0.0.0.0.1.3
Eudora (Gr) Eudora Cia. Nav. S. A. 346x46 1948 0.0.0.0.0.0.4
Eva Jeanette (Sw) Erik Kekonius 375x51 1958 0.0.0.0.0.4.4
Eva Tholstrup (De) A/S Trans-Kosan, mgr. 213x32 1958 0.0.0.4.5.5.2
Evvia (Gr) Hellenic Shipping & Industries 512x57 1943 0.0.3.4.1.1.2
 Formerly in Seaway trade as *National Fortune*
Exemplar (Li) Exemplar SS Co. 506x62 1950 0.0.0.0.1.0.4
Exiria (US) American Export-Isbrandtsen 420x60 1942 2.3.3.3.4.4.2
Expedito (US) American Ex.-Isbrandtsen 473x66 1943 0.0.0.4.3.2.4
Extavia (US) American Export-Isbrandtsen 420x60 1941 3.3.3.3.4.3.3

F

Fair Head (Br) Ulster SS Co. (Head Line) 305x42 1957 4.3.4.4.4.3.3
Falkenstein (Ge) Robert Bornhofen 434x53 1953 1.0.0.0.0.0.3
Falstaff (Sw) O. Wallenius, mgr. 347x51 1959 0.2.1.2.0.1.3
Faro (Li) Panamanian Marine Enterprises 442x57 1942 0.0.0.0.0.0.1
Fauskanger (No) Westfal-Larsen & Co. A/S 476x62 1964 0.0.0.0.0.0.1
Faust (Sw) O. Wallenius, mgr. 350x51 1960 0.1.4.1.3.2.2
Ferder (No) A/S Antarctic 496x71 1962 0.0.0.1.0.0.1
Ferngrove (No) Fearnley & Eger, mgr. 541x71 1965 0.0.0.0.0.0.1
Fernleaf (No) Fearnley & Eger, mgr. 541x71 1964 0.0.0.0.0.0.3
Fidelio (Sw) O. Wallenius, mgr. 349x51 1959 0.2.2.1.1.0.1
Flensburg (Ge) Hamburg Am./N. Ger. Lloyd 399x54 1959 0.0.0.2.4.3.3
Flora (Li) Urania Transp. Co. Inc. 484x59 1951 0.0.0.0.0.0.1
Florida Maru (Ja) Kawasaki Kisen K. K. 513x64 1961 0.0.0.0.0.0.1
Floristan (Br) Strick Line Ltd. 503x68 1965 0.0.0.0.0.0.1

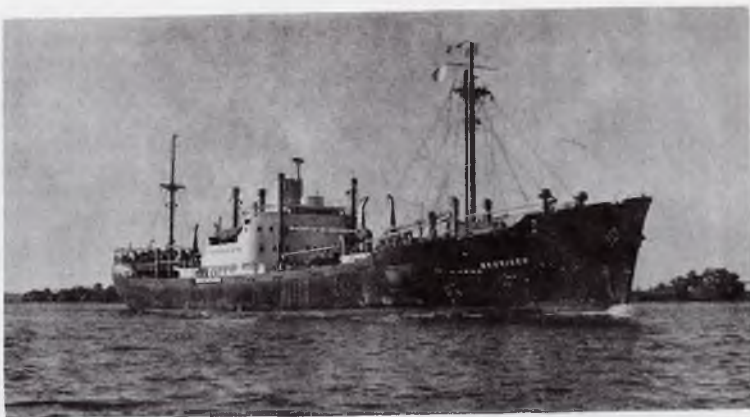
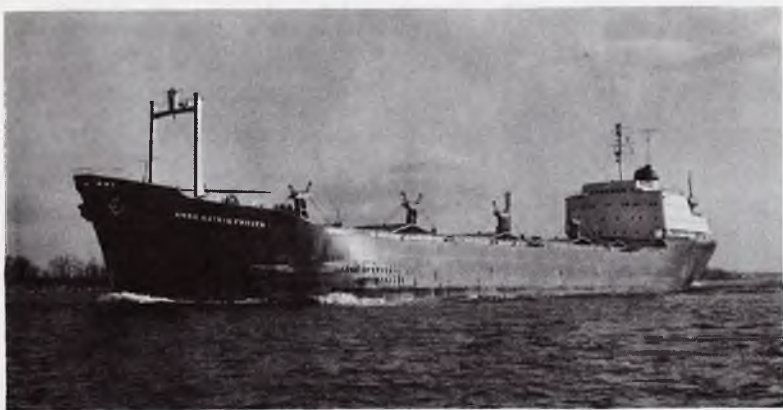
Flying Independent (US) A.E.-Isbrandtsen 418x60 1944 1.0.0.3.4.4.3
Flying Spray (US) Am. Export-Isbrandtsen 394x60 1944 3.1.1.4.4.3.4
Folga (No) A/S J. Ludwig Mowinckels Red. 476x62 1957 0.0.0.1.0.0.1
Fontenoy (Fr) Courtage & Transports S.A. 555x69 1957 1.0.0.0.0.0.3
Forward (Li) Mic Carriers Inc. 442x58 1944 0.0.0.0.0.0.1
Francisca Sartori (Ge) Sartori & Berger 288x42 1954 3.3.3.2.3.3.4
Francois L. D. (Fr) Louis Dreyfus & Cie. 617x75 1962 0.0.0.3.4.2.3
Frank H. Brown (Ca) British Yukon Nav. 380x70 1965 0.0.0.0.0.0.2
Fredrik Ragne (Sw) Swedish Chicago Line 299x42 1952 0.0.3.3.3.3.3
 Formerly in Seaway trade as *Fredborg* 3.3.0.0.0.0.0
Fro (No) A/S D/S Ask 439x54 1939 0.0.2.1.3.2.2
Fulda (Pa) Marine Development & Supply 440x57 1944 0.0.0.0.0.1.1

G

G. C. Brovig (No) Th. Brovig 531x68 1951 0.3.1.0.0.0.3
Gardenia (Gr) Gardenia Shipping Co. S. A. 373x51 1947 0.0.0.0.0.0.1
Geert Howaldt (Ge) Bernhard Howaldt Reed. 471x58 1955 0.0.0.0.1.3.1
Gemma (Ge) Van Nievelt, Goudriaan (Hamb.) 393x53 1958 0.0.0.0.0.0.4
Gerina (No) A/S Gerrards Rederi 496x63 1959 0.0.0.0.1.0.2
 Formerly in Seaway trade as *Marina* 0.0.0.1.0.0.0
Gezina Brovig (No) Th. Brovig, mgr. 537x67 1951 0.0.0.0.0.0.1
Gladys Bowater (Br) Bowater SS Co. Ltd. 325x50 1959 coastal route
Glaisale (Br) Headlam & Sons SS Co. Ltd. 442x54 1940 0.0.0.0.0.1
 Formerly in Seaway trade as *Kildale* 2.1.0.0.0.0.0
Gloxinia (Br) Stag Line Ltd. (Robinson) 480x60 1958 0.0.0.2.0.0.1
Glynafon (Br) Idwal Williams & Co. Ltd. 447x56 1953 0.0.0.0.0.4.2
Graigfelen (Br) Idwal Williams & Co. Ltd. 443x58 1948 0.0.0.1.0.5.2
Grand Explorer (Li) Friendship Nav. Corp. 442x57 1944 0.0.0.0.0.1.1
Grand Star (Li) Grace Nav. Corp. 442x57 1945 0.0.0.0.0.0.1
Granefors (Pa) Naviera Nuevamar S. A. 473x61 1948 0.0.0.0.0.0.1
Grindfjell (No) Fjell-Oranje Line 297x43 1953 3.4.4.4.4.4.4
Guido Donegani (It) Carbonas Soc. di Nav. 435x69 1955 0.0.0.1.0.0.4
Gunnar Brovig (No) Th. Brovig, mgr. 511x66 1949 0.0.0.0.0.2.3
Gunvor Brovig (No) Th. Brovig, mgr. 565x70 1957 0.0.0.0.0.1.2

H

Hadar (Is) Zim Israel Nav. Co. Ltd. 444x58 1964 0.0.0.0.0.3.2
Haichiao (Ch) China Merchants Steam Nav. 442x57 1943 0.0.0.0.0.0.1
Halifax City (Br) Bristol City Line of SS 440x58 1964 0.0.0.0.0.2.4
Hamburg Maru (Ja) Mitsui-O.S.K. Lines 495x63 1957 0.0.0.0.0.0.2
Harpefjell (No) Fjell-Oranje Line 435x58 1953 3.4.2.4.4.4.4
 Formerly in Seaway trade as *Oriente* 1.0.0.0.0.0.0
Hastings (US) Waterman Steamship Corp. 469x63 1944 0.0.0.0.0.1.1
Haukefjell (No) Fjell-Oranje Line 355x42 1962 0.0.0.2.4.4.4
Hawk (Pa) Bahia Salinas Cia. Nav. S. A. 442x57 1943 0.0.0.0.0.0.1
Henrietta Wilhelmine Schulte (Ge) Schulte 512x67 1957 0.0.0.0.0.2.2
Hera (Li) Dardanos Shipping & Trading 406x60 1948 0.0.0.0.0.1.1
 Formerly in Seaway trade as *Fred Christensen* 1.4.0.0.2.0.0



PHOTOGRAPHS BY EMORY MASSMAN

Above, left: *Anna Katrin Fritzen*

Above, right: *Broriver*

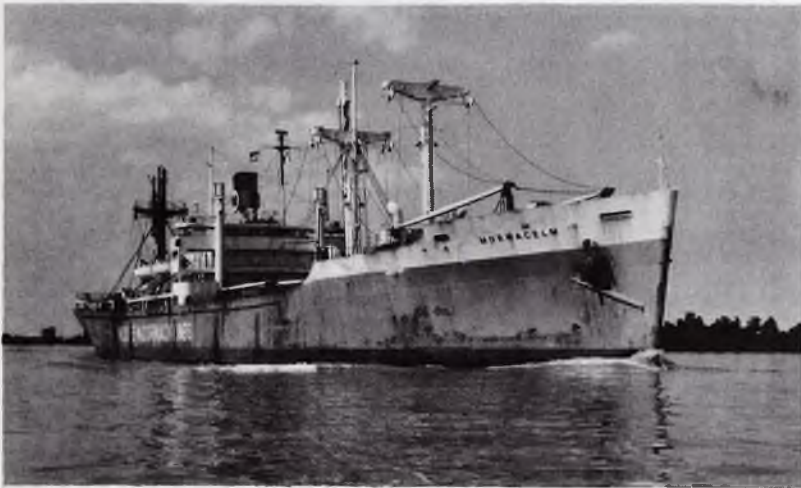
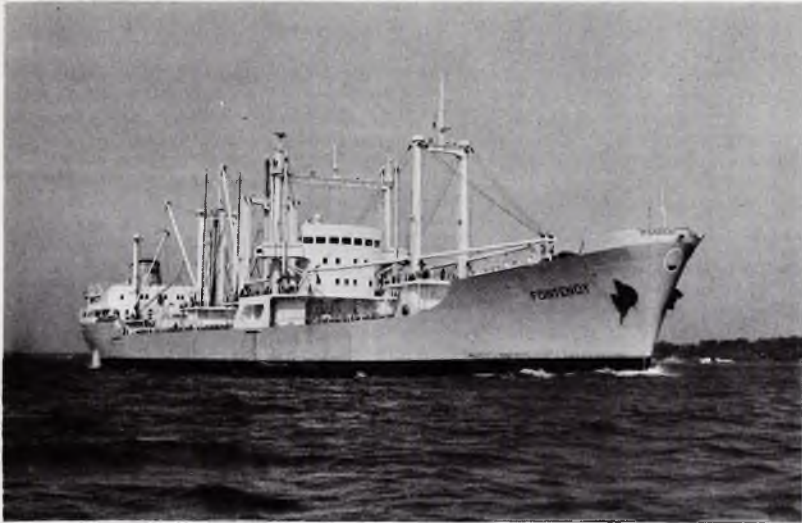
Lower left: *Emsstein*

PHOTOGRAPHS BY EMORY MASSMAN

Above, left: *Fontenoy*

Lower left: *Mormacelm*

Lower right: *Zenica*



Heracilitos (Gr) Skaramanga Shipping Co. 450x56 1947 0.0.0.0.0.0.1
Hervang (No) Vaboens Rederi A/S 518x64 1957 0.0.0.0.0.0.1
 Formerly in Seaway trade as *Amacita* 0.1.0.3.0.1.0
Hildegard Doerenkamp (Ge) R. Bornhofen 371x53 1954 0.0.0.0.0.0.1.3
Hilde Mittman (Ge) Ernst Jacob 341x47 1952 0.0.0.0.0.0.3.3
Himmerland (De) A/S Det Dansk-Fransk D/S 480x62 1956 0.0.0.0.0.0.1.3
Hiram (No) Bruusgaard Kiosteruds Skibs 502x62 1961 0.0.3.0.0.0.0.2
Hoegh Cliff (No) Leif Hoegh & Co. A/S 496x64 1956 0.0.0.0.0.0.0.1
Hoegh Skean (No) Leif Hoegh & Co. A/S 560x70 1954 0.1.2.0.0.0.1.3
Hoegh Traveler (No) Leif Hoegh & Co. A/S 584x75 1962 0.0.0.0.0.0.0.1
Holmside (Br) Burnett SS Co. Ltd. 396x53 1959 0.6.4.5.5.5.3
Holsworthy Beacon (Br) Phs. Van Ommeran 500x64 1961 0.0.0.0.0.0.0.1
Holtheim (No) B. Holter-Sorensen & Co. 467x61 1956 0.0.0.0.0.0.0.1
Holthill (No) B. Holter-Sorensen & Co. 487x62 1961 0.0.0.0.0.3.2
Hosanger (No) Westfal-Larsen & Co. A/S 497x63 1958 0.0.0.0.1.0.1
Hubro (No) E. B. Aabys Rederi A/S 327x46 1955 0.0.0.0.0.0.0.1

I

Ilice (It) Navigazione Arenella S.p.A. 527x69 1963 0.0.0.0.0.0.0.1
Ilse Schulte (Ge) Schulte & Bruns 512x67 1957 0.0.0.1.0.3.2
Inishowen Head (Br) Ulster SS Co. (Head) 1965 0.0.0.0.0.0.0.2
Ingrid Weide (Ge) Flensburg Stottiner 259x42 1953 4.4.4.3.3.2.3
Ingwi (No) Rolf Wigands Rederi, mgr. 486x61 1956 0.2.0.0.0.0.3.2
Innstein (Ge) Roland Line 392x50 1951 0.4.3.4.4.0.3
Inverewe (Br) J. & J. Denholm 524x64 1961 0.0.0.4.2.3.3
Irish Cedar (Ir) Irish Shipping Ltd. 504x68 1962 0.0.0.0.0.0.3
Irish Oak (Ir) Irish Shipping Ltd. 436x56 1949 0.5.3.5.1.4.3
Isolde (Sw) O. Wallenius, mgr. 378x52 1956 1.1.2.0.0.3.1

J

Jacara (No) Anders Jahre 541x70 1965 0.0.0.0.0.0.0.1
Jagona (No) Anders Jahre 496x66 1960 0.0.0.0.0.0.0.2
Jaladhan (In) Scindia Steam Nav. Co. 509x64 1956 0.0.0.0.0.0.0.1
Jaladhruv (In) Scindia Steam Nav. Co. 509x64 1956 0.0.0.0.0.0.0.1
Jaladuhita (In) Scindia Steam Nav. Co. 479x63 1958 0.0.0.0.1.0.1
Jalagomati (In) Scindia Steam Nav. Co. 499x62 1958 0.0.0.0.0.0.2.1
Jalaplaka (In) Scindia Steam Nav. Co. 497x62 1961 0.0.0.0.0.0.0.1
Jalaveera (In) Scindia Steam Nav. Co. 476x58 1958 0.0.0.0.0.0.0.1
Jalavijaya (In) Scindia Steam Nav. Co. 476x58 1955 0.0.0.0.0.0.1.1
Jarosa (No) Anders Jahre, mgr. 612x75 1963 0.0.0.0.0.0.0.1
Jarabella (No) Anders Jahre, mgr. 553x72 1963 0.0.0.0.0.0.1.1
Jarso (Fi) Mariehamns Rederi A/B 236x35 1961 0.0.0.5.5.5.3
Jawaga (No) Anders Jahre, mgr. 541x70 1965 0.0.0.0.0.0.0.2
Jean L-D (Fr) Louis Dreyfus & Cie. 454x61 1957 1.2.4.4.5.4.3
Johanna (Ge) Chr. F. Ahrenkiel, mgr. 241x42 1953 3.2.4.4.4.0.1
Johannes Russ (Ge) Ernst Russ, Mgr. 515x67 1958 0.3.1.1.2.2.1
John C. (US) Atlantic Carriers Inc. 460x63 1943 0.0.0.0.0.0.0.1
Joliette (Fr) Fabre Line 305x42 1953 3.3.3.3.3.2.3

K

Kallianax (Gr) Stella Polaris Shipping 346x46 1938 0.0.0.0.0.0.0.1
 Formerly in Seaway trade as *Pandora* 0.0.0.1.0.0.0
Kallso (Fi) Mariehamns Rederi A/B 236x35 1961 0.0.0.4.5.5.4
Kally (Ch) Eddie SS Co. Ltd. 442x57 1943 0.0.0.0.0.0.1
Kamikawa Maru (Ja) Kawasaki Kisen K. K. 515x64 1951 0.0.0.1.1.2.1
Kanangoora (Sw) Rolf Carlsson, mgr. 501x69 1963 0.0.0.0.0.0.0.1
Kassos (Gr) Kassos Steam Nav. Co. Ltd. 443x57 1939 0.0.0.0.1.1.1
Kasugasan Maru (Ja) Mitsui Sempaku K. K. 492x63 1962 0.0.0.0.1.1.1
Kavala (Gr) Hellenic Shipping & Industr. 512x57 1943 0.0.0.0.0.1.2
 Formerly in Seaway trade as *National Hope* 0.1.1.0.0.0.0
Kentung (Br) Elder Dempster Lines Ltd. 455x58 1954 0.0.0.0.0.0.1
Kimikawa Maru (Ja) Kawasaki Kisen K. K. 515x64 1952 0.0.0.1.1.1.1
Kingsun (Ch) Chi Yuen Nav. Co. 423x57 1943 0.0.0.0.0.0.1
Kini (Gr) Kini Cia. Maritima S. A. 512x57 1943 0.0.0.0.0.0.2
Korais (Gr) Proteus Shipping Co. Ltd. 423x57 1943 0.0.0.0.0.0.1
Korle Lagoon (Gh) Black Star Line Ltd. 455x63 1964 0.0.0.0.0.0.1
Koyan (Br) Elder Dempster Lines, Ltd. 455x58 1952 0.0.0.0.0.0.1
Kulpawn River (Gh) Black Star Line Ltd. 461x60 1962 0.0.0.0.0.0.1
Kungaland (Sw) Dan-Axel Brostrom, mgr. 454x58 1951 0.0.0.0.0.1.1
Kunikawa Maru (Ja) Kawasaki Kisen K. K. 515x64 1952 0.0.0.1.2.2.1
Kyska (US) Waterman Steamship Corp. 469x63 1945 0.0.0.0.0.0.1

L

Lake Bosomtwe (Gh) Black Star Line Ltd. 461x60 1963 0.0.0.0.0.0.0.1
Lake Eyre (Sw) Dan-Axel Brostrom 489x62 1961 0.0.1.2.1.1.1
La Loma (Br) Buries Markes Ltd. 494x63 1959 3.3.4.3.4.4
La Marea (Br) Buries Markes Ltd. 494x63 1958 1.0.0.3.3.2.2
La Plata Maru (Ja) Mitsui-O.S.K. Lines 496x63 1955 0.0.0.0.0.0.1
Las Arenas (Sp) Naviera Bilbaina S. A. 475x62 1960 0.0.0.0.0.0.1
Leabeth (Ge) Ahrenkiel & Bene, mgr. 258x43 1956 3.4.0.3.4.0.2
Leada (Ge) Hamburg-Chicago Line (Adams) 418x54 1961 0.0.0.4.3.4.3
Lealott (Ge) Hamburg-Chicago (Leo Adams) 348x50 1958 0.0.0.0.0.4.4
 Formerly in Seaway trade as *Volumnia* 3.4.4.0.0.0.0
Leapaul (Ge) Hamburg-Chicago (Leo Adams) 400x53 1958 2.4.3.3.3.3.4
Learina (Ge) Hamburg-Chicago (Ahrenkiel) 400x53 1958 0.2.4.3.4.4.4
Leonidas (Li) Miramonte Cia. Naviera S. A. 579x74 1953 0.0.0.5.0.0.4
Letitia (Br) Donaldson Line Ltd. 416x58 1961 0.0.0.0.0.0.4
Leto (Du) Hudig & Veder 465x60 1953 0.1.0.1.4.3.4
Lillevann (No) Jacobsen & Salvesen, mgr. 370x49 1957 0.0.0.1.2.0.4
Linde (No) Anton Von Der Lippe 541x71 1965 0.0.0.0.0.0.2
Lisbet Tholstrup (De) A/S Trans-Kosan 217x31 1963 0.0.0.0.4.1.1
London Advocate (Br) London & Overseas 516x66 1964 0.0.0.0.0.0.1
Lord Viking (No) C. T. Gogstad & Co., mgr. 382x53 1960 0.0.0.0.0.4.4
Louisiana Maru (Ja) Kawasaki Kisen K. K. 514x64 1962 0.0.0.0.0.0.2
Louis L-D (Fr) Louis Dreyfus & Cie. 465x61 1957 0.3.4.5.3.4.5
Lovland (No) Samuelsons Rederi, mgrs. 369x51 1962 0.0.0.0.0.0.1

Luka Botic (Yu) Jadranska Slobodna Plov. 504x62 1960 0.0.3.3.2.4.3
 Lundefjell (No) Olsen & Ugelstad, mgr. 435x58 1949 0.0.0.0.0.0.4
 Lycia (Br) Cunard SS Co. Ltd. 348x50 1954 0.0.0.0.0.4.2
 Lyngenfjord (No) Norwegian-American Line 422x54 1948 4.4.4.4.3.3.5

M

Maas (Ge) Friedrich A. Detjen 485x60 1959 1.0.0.0.0.0.2
 Magdeburg (Ge) Hamburg Am./N. Ger. Lloyd 362x49 1952 4.4.4.3.4.3.3
 Magdalena Reith (Ge) Partenr. Magd. Reith 377x49 1959 0.0.4.1.1.0.3
 Maj Ragne (Sw) Swedish-Chicago (Ragne) 374x50 1961 0.0.3.3.4.2.3
 Makefjell (No) Olsen & Ugelstad 452x59 1959 3.3.4.4.4.4.4
 Malmanger (No) Westfal-Larsen & Co. A/S 533x63 1950 0.0.0.0.0.1.1
 Manchester City (Br) Manchester Liners 502x62 1964 0.0.0.0.0.2.4
 Manchester Commerce (Br) Manchester 502x62 1963 0.0.0.0.3.4.4
 Manchester Engineer (Br) Cairn Line of SS 445x60 1952 0.0.0.0.0.0.3
 Manchester Exporter (Br) Manchester 445x60 1952 0.0.0.0.0.0.4
 Manchester Progress (Br) Manchester 447x57 1938 0.0.4.4.3.1.1
 Manchester Regiment (Br) Manchester 461x58 1947 0.0.0.3.0.2.2
 Manchester Renown (Br) Beaver Industries 502x62 1964 0.0.0.0.0.4.4
 Manchester Shipper (Br) Manchester Liners 461x58 1943 0.3.3.4.5.3.4
 Manjusana Maru (Ja) Mitsui-O.S.K. Lines 514x65 1957 0.0.1.2.0.2.2
 Maratha Endeavor (Br) Fife Shipping Co. 520x71 1962 0.0.0.0.0.0.1
 Marcell M. H. (Li) Cia. de Transporte 442x57 1944 0.0.0.0.0.0.1
 Marco U. Martinoli (It) Martinolich, mgr. 458x60 1956 0.2.0.2.2.2.1
 Margit Brovig (No) Th. Brovig 480x68 1960 0.1.0.0.2.3.1
 Maria Angela Martinoli (It) Martinolich 458x60 1957 0.0.0.2.1.1.1
 Marianna (Gr) Cia. Nav. Mzianna S. A. 431x56 1939 0.0.0.0.0.0.1
 Mariprima (Li) Armadores Petroleros 522x68 1951 0.0.0.0.0.0.2
 Marietta T. (Gr) Cia. Mar. Las Perlas SA 442x57 1943 0.0.0.0.0.0.3
 Marindi Jubani (Li) Andmarc Ship'g Corp. 406x60 1948 0.0.0.0.0.0.1
 Formerly in Seaway trade as *Wirta* 0.1.3.0.0.0.0
 Martin Schroder (Ge) Reederei R.Schroder 383x55 1965 0.0.0.0.0.0.1
 Mar Tirreno (It) "Mar Ligure" Soc. di Nav. 559x70 1952 0.0.0.0.0.0.3
 Mary Nubel (Ge) Ender Dampfer-Kompagnie 385x60 1959 0.0.0.0.0.0.1.3
 Masashima Maru (Ja) Iino Kaiun K. K. 496x63 1952 0.1.2.2.2.2.2
 Mathilde Bolten (Ge) Aug. Bolten et al 533x67 1961 0.0.0.2.0.3.2
 Matija Gubec (Yu) Jadranska Slobodna Pl. 439x57 1944 0.0.0.0.0.0.1
 Matumba (Sw) Rolf Carlsson, mgr. 500x69 1963 0.0.0.0.4.4.4
 Maxi Porr (Ge) Franz Hagen, mgr. 350x50 1965 0.0.0.0.0.0.1
 Mayasan Maru (Ja) Mitsui-O.S.K. Lines 514x65 1958 0.1.1.1.2.2
 Mellum (Ge) Partenreederei M. S. Mellum 382x53 1957 0.0.0.0.0.0.1
 Melusine (Fr) Union Miniere Maritime 453x61 1961 0.0. 3.2.4.3
 Mesologi (Li) Hellenic Shipping & Indust. 512x57 1943 0.0.0. 0.0.1
 Mica (No) D/S A/S Flint (Willy Kubon) 466x60 1954 0.0.0.0 1.0.2
 Middle River (Pa) San Agustin 592x71 1950 0.0.0.0 1.0.1
 Middlesex Trader (Br) Trader Nav. Co.Ltd. 583x76 1963 0.0.0.0 0.1.2
 Mikishima Maru (Ja) Iino Kaiun K. K. 512x64 1961 0.0.0.0 2.3.1
 Mikhal (Is) Ophir Tankers (1965) Ltd. 253x40 1965 0.0.0.0 0.0.1
 Monica Smith (Sw) Swedish Chicago Line 258x43 1952 3.3.3. 3.3.3

Montcalm (Br) Montship Capo Great Lakes 440x59 1960 0.3.3.4.4.4.4
 Montevideo (Sw) A. A. Johnson, mgr. 490x63 1958 0.0.0.0.0.0.1
 Montreal City (Br) Bristol City Line 440x58 1963 0.0.0.0.4.4.4
 Moose Jaw (No) N. Rogenaes 427x55 1963 0.0.0.0.0.3.2
 Formerly in Seaway trade as N. O. Rogenaes 0.0.0.0.0.1.0
 Morgana (No) Thorvald Berg, mgr. 500x65 1961 0.0.0.0.0.0.1
 Mormacelm (US) Moore-McCormick Lines 455x62 1945 0.0.0.1.0.0.2
 Mormacfir (US) Moore-McCormick Lines 455x62 1945 1.0.0.0.1.1.1
 Mormacoak (US) Moore-McCormick Lines 460x63 1944 0.0.0.0.1.1.1
 Mormacpine (US) Moore-McCormick Lines 455x62 1945 0.1.1.1.1.2.2
 Muneshima Maru (Ja) Iino Kaiun K. K. 512x64 1958 0.2.2.2.2.0.2

N

Nahariya (Is) Zim Israel Navigation Co. 366x50 1960 0.0.0.2.2.0.4
 Nasia River (Gh) Black Star Line Ltd. 461x60 1962 0.0.0.0.0.0.1
 Natko Nadilo (Yu) Jadranska Slobodna Pl. 504x62 1960 0.0.3.3.3.3.3
 Neptun (Ge) Flensburger Schiffsp.-V.A.G. 360x50 1956 0.0.0.0.3.3.3
 Netanya (Is) Zim Israel Navigation Co. 361x50 1959 0.1.0.1.3.0.3
 Nordia (Sw) Cunard (charter) 378x50 1961 0.0.0.0.0.4.3
 Norholt (No) A/S Ivarens Rederi 417x58 1961 0.0.0.1.4.4.3
 Norse Variant (No) Odd Godager & Co. mgr. 541x70 1964 0.0.0.0.0.0.1
 North Devon (Br) Common Bros. Ltd., mgr. 404x60 1958 0.0.0.0.0.0.3
 North Hills (US) Sperling SS & Trading 460x63 1944 0.0.0.0.0.0.1
 Formerly in Seaway trade as *Mormac teal* 0.0.0.1.0.1.0
 Northland (No) Chr. Haaland, mgr. 430x57 1962 0.0.0.0.0.0.1
 Notos (No) Valdemar Skogland A/S, mgr. 363x48 1950 0.0.0.0.0.2.2
 Formerly in Seaway trade as *Ferngrove* 0.0.0.0.2.0.0

O

Olau Jarl (De) Ole Lauritzen, mgr. 397x52 1964 0.0.0.0.0.0.3
 Oriental Clipper (Li) Universal Bulk Car. 571x75 1963 0.0.0.0.0.0.1
 Oriental Envoy (Li) Oceanic Bulk Carriers 582x75 1965 0.0.0.0.0.0.1
 Oriental Venus (Li) Pacific Bulk Carriers 525x66 1963 0.0.0.0.0.0.2
 Orient Lakes (Li) Cosmos Cia. Nav. S.A. 423x57 1943 0.0.0.1.1.1.2
 Orient Liner (Gr) Orient Mid-East G.L. 455x62 1945 0.0.0.0.1.1.1
 Orient Mariner (Gr) Orient Mid-East Lines 515x65 1964 0.0.0.0.0.2.2
 Orient Merchant (Gr) Orient Mid-East 497x65 1944 0.1.0.1.2.2.½
 Later in Seaway trade as *Zambezi* 0.0.0.0.0.0.½
 Orient Trader (Gr) Orient Mid-East Lines 455x62 1945 0.1.2.2.1.1.2
 Ornefjell (No) Olsen & Ugelstad 438x58 1955 0.0.0.0.0.0.2
 Otava (Fi) Herbert Janhonen, Mgr. 296x41 1942 0.0.0.0.0.0.1
 Otchi River (Gh) Black Star Line 461x60 1961 0.0.0.0.0.0.1
 Otterburn (Br) Common Brothers Ltd., mgr. 504x61 1958 0.0.0.1.2.0.2
 Formerly in Seaway trade as *Continental Carrier* 1.2.3.0.0.0.0

P

Pacific Ocean (Sw) A/B Oeankompaniet 500x66 1965 0.0.0.0.0.0.1

Paget Trader (Li) Paget Traders Inc. 501x68 1941 0.0.0.0.0.2.1
Panagathos (Li) Hellenic Shipping & Ind. 512x57 1943 0.0.0.1.1.0.2
Patagonia (Gr) Patagonia Cia. de Invers. 442x57 1944 0.0.0.0.0.0.2
Patignes (Be) Cia. Belge d'Armement S.A. 600x76 1962 0.0.0.2.4.5.5
Patricia (Li) Patricia Cia. Nav. S. A. 449x56 1943 0.0.0.0.0.0.1
Pearl Light (Br) Pacific Pearl Nav. Co. 417x56 1943 0.0.0.0.0.0.1
Penchateau (Fr) Chargeurs de l'Ouest 435x56 1960 0.0.0.0.0.0.2
Petka (Yu) Atlantska Plovidba 479x60 1957 0.0.0.0.0.0.4
Phyllis Bowater (Br) Bowater SS Co. Ltd. 325x50 1960 coastal 7
Piran (Yu) Splosna Plovba 519x65 1959 0.0.0.0.0.0.3
Polarglimt (No) Hvalfangerslsk Polaris 490x64 1958 0.0.0.0.2.3.2
Polaris (Ge) Hamburg Grosse-Seen Linie 349x50 1957 0.0.0.0.3.4.3
 Formerly in Seaway trade as *Valeria* 2.0.3.0.0.0.0
Polar Viking (Sw) Rederi A/B Polar 239x36 1964 0.0.0.0.0.0.1
Polegate (Br) United Merchants Shipping 442x57 1943 0.0.0.0.0.0.1
Polydora (Gr) Kratigos Shipping Co. 363x48 1949 0.0.0.0.0.3.3
 Formerly in Seaway trade as *Fernfiord* 0.0.0.0.3.0.0
Poros (Li) Casa Blanca Shipping Corp. 442x57 1943 0.0.0.0.0.0.1
Poseidon (Ge) Poseidon Schifffahrt GmbH 482x60 1952 0.0.0.1.3.3.3
Prins Alexander (Du) Fjell-Oranje Line 352x47 1947 3.4.4.4.3.4.4
Prins Casimir (Du) Oranje Lijn (Veder) 305x42 1955 3.3.3.4.4.3.4
Prins Frederik Willem (Du) Oranje (Veder) 258x42 1951 4.4.4.4.4.4.4
Prins Johan Willem Friso (Du) Oranje 343x47 1948 3.4.3.4.4.4.4
Prins Maurits (Du) Oranje Lijn (Veder) 355x52 1960 0.0.3.3.3.3.3
Prins Willem III (Du) Oranje Lijn (Veder) 258x42 1948 0.3.4.3.2.2.4
Prins Willem IV (Du) Oranje Lijn (Veder) 258x42 1940 3.3.4.3.2.3.3
Prins Willem V (Du) Oranje Lijn (Veder) 305x42 1956 3.3.4.4.4.4.5
Prins Willem George Frederik (Du) Oranje 305x42 1954 3.4.4.4.4.4.3
Procyon (Ge) Van Nievelt, Goudriaan (H.) 476x61 1948 0.0.0.0.0.0.1
Prometheus (No) Jacob Adland SS, mgr. 489x63 1951 0.0.0.0.0.0.1
Propontis (Gr) Cia. de Nav. Propontis 441x57 1943 0.0.0.0.0.0.1
Protostatis (Gr) Protostatis Cia. Nav. 442x57 1943 0.0.0.0.0.0.2

R

Ramon de Larrinaga (Br) Larrinaga SS Co. 457x60 1954 4.0.0.0.0.0.1
Ramore Head (Br) Ulster SS Co. (Head) 437x59 1948 5.2.0.3.3.0.3
Ranborg (No) Erling Hansens Rederi A/S 412x60 1943 0.0.0.0.1.1.1
Ranella (No) Erling Hansens Rederi A/S 518x64 1957 0.0.0.0.0.0.1
 Formerly in Seaway trade as *Stove Waggon* 0.0.0.0.0.1.0
Ravnanger (No) Westfal-Larsen & Co. A/S 476x62 1963 0.0.0.0.0.1.1
Ravnefjell (No) Fjell-Oranje Line 297x43 1955 4.3.3.4.4.4.4
Reinhart Lorenz Russ (Ge) Hapag/N.G.Lloyd 348x53 1951 0.2.4.3.3.2.4
Rheinstein (Ge) Norddeutscher Lloyd 392x50 1951 4.3.0.3.0.4.4
Rhenania (Ge) Christian Ahrenkiel, mgr. 527x66 1958 0.0.0.0.0.2.2
Rialto (Br) Ellerman's Wilson Line Ltd. 420x56 1949 0.0.0.5.4.4.1
Rimon (Is) Zim Israel Navigation Co. Ltd. 353x47 1951 0.0.0.0.0.0.3
Rocroi (Fr) Courtage et Transports S.A. 555x69 1958 1.0.0.1.0.0.4
Rogn (No) A/S Rederiet Odfjell, mgr. 390x54 1962 0.0.0.5.5.0.4
Rogo (Gr) Ayalago Cia. Nav. S. A. 442x57 1944 0.3.1.0.0.0.1

Roland Russ (Ge) Hapag/N. German Lloyd 379x53 1952 3.3.3.4.4.4.3
Ronacastle (No) Skibs A/S Agnes 555x70 1962 0.0.0.0.1.0.1
Roonagh Head (Br) Ulster SS (Head Line) 455x60 1952 3.4.3.3.4.4.4
Rosanna--see Demetra
Rugdefjell (No) Olsen & Ugelstad 435x58 1950 0.0.0.0.0.1.4

S

Saarstein (Ge) Hamburg Am./N. G. Lloyd 392x50 1951 0.0.0.1.3.1.3
Sabine Howaldt (Ge) Howaldt & Co. 306x40 1958 0.0.0.4.1.0.1
Saldanha (Br) Chimo Great Lakes (charter) 487x62 1959 0.0.0.0.0.4.2
Saldura (Br) South Georgia Co. Ltd. 485x62 1960 0.0.0.0.1.0.4
Salmela (Br) South Georgia Co. Ltd. 487x62 1961 0.0.0.0.0.0.3
Salvada (Br) South Georgia Co. Ltd. 485x62 1961 0.0.0.1.0.0.4
Salvina (Br) South Georgia (Salvesen) 485x62 1963 0.0.0.0.0.1.3
Santa Elisabetta (It) Malvicini 442x57 1943 0.0.0.0.0.0.1
Santona (Br) Donaldson Line 294x45 1959 2.5.3.5.5.5.4
Scottish Trader (Br) Trader Nav. Co. Ltd. 507x69 1962 0.0.0.0.0.3.3
Sefra (No) Skibs A/S Akersviken 489x63 1959 0.0.0.1.1.1.1
 Formerly in Seaway trade as *Cape of Good Hope* 0.0.1.0.0.0.0
Selje (No) A/S Rederiet Odfjell, mgr. 440x48 1963 0.0.0.0.0.4.4
Shahristan (Br) F. C. Strick & Co. Ltd. 503x68 1965 0.0.0.0.0.0.1
Sideris (Li) Marine Transport Co. S. A. 442x57 1943 0.0.0.0.0.0.1
Silvaplana (Ss) Suisse-Atlantique 487x61 1956 2.0.0.0.2.3.1
Silverbeach (Br) Silver Line Ltd., mgr. 526x67 1962 0.0.0.0.0.0.1
 Formerly in Seaway trade as *Totem Star* 0.0.0.0.3.4.0
 Formerly in Seaway trade as *Norse Coral* 0.0.0.2.0.0.0
Silverleaf (Br) Silver Line Ltd., mgr. 510x69 1963 0.0.0.0.0.1.1
Silversea (Br) Silver Line Ltd., Mgr. 526x67 1963 0.0.0.0.0.0.1
 Formerly in Seaway trade as *Totem Queen* 0.0.0.0.1.3.0
Silverweir (Br) Silver Line Ltd. 500x67 1961 0.0.0.0.0.1.1
Simoa (No) Torvald Klaveness, mgr. 515x67 1959 0.0.0.0.0.0.1
Simone (Li) Groborg Shipping Corp. 442x57 1943 0.0.0.0.0.0.1
Sirefjell (No) Olsen & Ugelstad (Fjell) 355x52 1962 0.0.0.2.3.3.3
Sistina (No) Tschudi & Eitzen, mgr. 475x62 1959 0.0.2.0.0.1.2
Skagatind (No) Victor L. Schage, mgr. 327x44 1957 0.0.0.0.0.0.2
 Formerly in Seaway trade as *Lionel* 1.0.2.1.1.0.0
Sneaton (Br) Headlam & Sons, mgrs. 442x57 1944 0.0.0.0.0.0.1
Sneland I (No) Rich. Amlie & Co. A/S, mgr. 510x67 1962 0.0.0.0.0.4.3
Solta (Yu) Judranska Slobodna Plovidba 442x57 1943 0.0.0.0.1.0.2
Sommario (Fi) Mariehamns Rederi (Erikson) 383x51 1959 1.0.0.0.0.0.3
Sophie C. (Li) Excelsior Shipping 504x67 1957 0.0.0.0.1.1.1
Spildra (No) Torvald Klaveness, mgr. 487x64 1957 0.0.0.0.0.0.1
Steenwijk (Du) S. V. Mij. Wijklijn 455x61 1957 0.3.1.1.0.0.1
Steno (Sw) Erik K. Fernstrom, mgr. 429x58 1962 0.0.0.0.1.0.1
Stolt Avenir (No) J. Stolt-Nielson 488x60 1949 0.0.0.4.5.4.3
Stolt Bjorn (No) Albjorn Langvik, mgr. 488x60 1953 0.0.0.0.0.0.2
Sumatra (Du) N. V. Stoomv. M. "Nederland" 520x63 1943 0.0.0.0.0.0.1
Sundale (No) A/S I. M. A. 419x56 1964 0.0.0.0.0.1.2
 Formerly in Seaway trade as *IMA Sam* 0.0.0.0.0.2.0

Sunfalcon (No) A/S Oddero &c. 412x60 1944 0.0.0.0.2.3.2
Sungate (Br) Turnbull, Scott Shipping Co. 462x60 1958 0.2.2.2.0.0.1
Suninger (No) A. I. Langfeldt & Co. mgr. 457x59 1956 0.0.0.0.1.0.1
Sunland (No) A. I. Langfeldt & Co. mgr. 412x60 1944 0.0.0.0.0.3.1
Sunray (No) Rederiet Tonseth A/S, mgr. 532x71 1963 0.0.0.0.0.0.1
Sunrise (No) Den Norske Syd-Amerika Linje 428x57 1956 0.0.0.0.0.0.2
Sunseahorse (No) I/S Seahorse 417x55 1961 0.0.0.0.4.1.1
Sunvalley (No) A/S Corona (Wrangell) 443x58 1949 0.0.0.0.0.½.1
 Formerly in Seaway trade as *Corona* 0.0.0.0.3.½.0
Surrey Trader (Br) Trader Nav. Co. Ltd. 583x76 1964 0.0.0.0.0.0.1
Susanne Fritzen (Ge) Johannes Fritzen 532x69 1959 0.0.0.0.2.3.4
Svanefjell (No) Fjell (Olsen & Ugelstad) 355x42 1962 0.0.0.4.3.4.4
Sylvianne (Fr) Union Ind. et Maritime 541x72 1943 0.0.0.0.0.0.1

T

Tappuz (Is) Zim Israel Navigation Co. 386x53 1954 0.2.3.0.0.1.1
Tautra (No) Skibs A/S Trolla &c. 370x48 1957 0.0.0.0.4.4.4
Tazacorte (Ge) Franz Haniel & Cie. GmbH 324x48 1952 3.0.0.0.0.0.3
Teresa (Li) Ramon de la Sota Jr., mgr. 432x56 1940 0.0.0.0.0.3.2
Ternefjell (No) Olsen & Ugelstad 297x43 1955 3.3.3.3.4.4.3
Texaco Mississippi (US) Texaco Inc. 524x68 1944 0.0.0.0.0.2.3
Texas Maru (Ja) Kawasaki Kisen K. K. 513x64 1962 0.0.0.0.0.2.1
Theomana (Pa) Fiadora Cia. Nav. S. A. 442x57 1945 0.0.0.0.0.0.1
Thorfrid (No) Odd & Per Tonnevold, mgr. 489x64 1957 0.0.0.0.1.2.2
Thorunn (No) Olaf Tonnevold, mgr. 532x69 1962 0.0.0.1.1.4.3
Tidaholm (Sw) Swedish-American Line 429x58 1943 1.1.0.0.2.3.2
Tindefjell (No) Fjell-O. (Olsen & U.) 435x58 1953 3.3.4.3.3.4.4
Tobon (No) Willy Kubon, mgr. 446x58 1943 0.0.0.0.0.0.1
Topdalsfjord (No) Norwegian-American 424x54 1959 0.4.4.4.4.4.4
Torr Head (Br) Ulster SS (Head Line) 455x62 1961 0.0.0.4.4.4.3
Torsholm (Sw) Swedish American Line 304x42 1950 3.1.3.1.2.3.3
Transamerica (Ge) Poseidon Schiffahrt 388x54 1948 0.1.3.4.4.3.3
Transcanada (Ge) Poseidon Schiffahrt 441x53 1945 3.4.4.4.2.4.4
Transeuropa (Ge) Poseidon Schiffahrt 388x54 1949 0.0.1.3.3.4.3
Transpacific (Ge) Poseidon Schiffahrt 398x54 1954 1.1.4.4.3.4.3
Transquebec (Ge) Poseidon Schiffahrt 323x47 1951 4.4.4.4.3.4.4
Traviata (Sw) O. Wallenius, mgr. 258x43 1955 4.4.4.2.0.3.1
Treneglos (Br) New Zealand Shipping Co. 505x65 1963 0.0.0.0.0.0.1
Triada (Cy) M. C. Fred Hunter, mgr. 440x57 1943 0.0.0.0.0.0.3
Tristan (Sw) O. Wallenius, mgr. 378x52 1956 0.3.0.2.2.3.3
Trojaland (Sw) Dan-Axel Brostrom, mgr. 442x58 1963 0.0.0.0.0.2.1
Tronstad (No) A/S Tronstad 308x46 1963 0.0.0.0.0.2.3
Tsuneshima Maru (Ja) Iino Kaiun K. K. 516x64 1953 0.1.1.0.0.2.1
Tynemouth (Br) Burnett Steamship Co. 372x53 1955 1.3.3.0.4.5.5

U

Umberto D'Amato (It) Umberto d'Amato 434x61 1938 0.0.0.0.0.0.1
Urania (Gr) Urania Nav. Corp. 293x39 1949 0.0.0.0.1.0.2

Uranus (Ge) Flensburger Schiff. 349x49 1960 0.0.3.3.3.0.1
Utrecht (Du) Nedlloyd 468x70 1947 0.1.1.0.2.2.1
Utsira (No) Vilhelm Torkildsen 483x59 1955 0.0.0.1.0.0.1

V

Valparaiso (Br) Sefton SS Co. Ltd. 490x60 1953 0.0.0.0.0.0.3
 Formerly in Seaway trade as *La Hacienda* 0.0.3.3.1.4.0
 Formerly in Seaway trade as *Francois L-D* 3.0.0.0.0.0.0
Vares (Yu) Judranska Slobodna Plovidba 352x47 1951 1.4.3.2.2.3.3
Vasaland (Sw) A/B Svenska Orient Linien 429x58 1951 0.0.0.0.0.0.1
Vaxholm (Sw) Swedish-American Line 304x42 1956 3.2.2.1.2.3.2
Vegaland (Sw) A/B Svenska Orient Linien 429x58 1952 0.0.1.0.0.0.1
Vibyholm (Sw) Swedish American Line 431x58 1951 0.2.3.3.2.3.3
Vikara (No) O. Ditlev-Simonsen, Jr. mgr. 508x68 1963 0.0.0.0.0.3.4
Vinstra (No) O. Ditlev-Simonsen, Jr. 508x68 1963 0.0.0.0.0.3.1
Virgilia (Ge) A. Kirsten, mgr. 349x50 1957 4.4.4.4.0.4.3
Virgo (Fi) Finska Angfartygs 382x53 1964 0.0.0.0.0.0.1
Visund (No) Halfdan Ditlev-Simonsen 549x66 1956 0.0.0.0.0.0.3

W

Waldeck (Ge) Robt. Bornhofen, mgr. 311x45 1953 3.1.0.0.0.0.1
Wasaborg (Sw) Stockholms Rederi A/B Svea 503x62 1958 0.0.1.1.4.2.1
Wearfield (Br) Northern Petroleum Tank SS 617x75 1964 0.0.0.0.0.1.3
Weissenberg (Ge) Hamburg Am./N.G. Lloyd 362x49 1953 4.4.3.1.3.4.4
Wendover (Br) Britain SS Co. 475x64 1950 0.0.1.0.1.0.1
West River (Li) International Nav. Corp. 546x69 1962 0.0.0.0.0.0.2
White River (Li) International Nav. Corp. 546x69 1958 0.0.0.2.0.0.2
Wilke (Fi) Suomen Tankkilaiva O/Y 479x64 1961 0.0.0.0.0.0.1
Winner (Li) Winner Shipping Corp. 442x57 1943 0.0.0.0.0.0.1
Winona (Li) Universal Mariners S. A. 423x57 1944 0.0.0.0.0.0.1
Woldingham Hill (Br) Fataise SS Co. 442x57 1943 3.4.2.1.0.0.1
Wolfgang Russ (Ge) Hamburg Am./N.G.Lloyd 383x54 1955 3.4.4.4.3.4.3
Woodville (No) Skibs A/S Solstad 503x62 1958 0.0.0.1.4.3.1

Y

Yafo (Is) Zim Israel Navigation Co. Ltd. 444x58 1964 0.0.0.0.0.0.3
Yarden (Is) Zim Israel Navigation Co. 339x48 1959 2.0.0.0.0.0.1
Yildun (Ge) Van Nievelt Goudriaan (Hamb.) 425x57 1950 0.0.0.0.3.4.3

Z

Zambezi--see *Orient Merchant*
Zeeland (Du) Rotterdam Lloyd 492x70 1946 0.0.0.1.1.0.1
Zenica (Yu) Judranska Slobodna Plovidba 352x47 1952 0.3.2.3.3.3.3
Zenobia Martini (It) Spedizioni It. Mar. 466x58 1941 0.0.0.1.2.1.3
 Formerly in Seaway trade as *Zenobia Martini Seconde* 0.0.1.0.0.0.0
Zosma (Ge) Van Nievelt, Goudriaan (Hamb.) 393x53 1959 0.0.0.0.0.0.?



A familiar visitor to the lakes has been the Buries Markes freighter La Hacienda, seen above left in a Baut photo; at lower left she appears in an Ayoub photo as renamed in 1965: Valparaiso



LIST **B**: 1965 SEASON **RECORD**

Compiled by George Ayoub

Name & Owner Changes

A. & J. MID-AMERICA (US) Mid-America SS Corp., N. Y. 0.0.0.0.1.0.0
 1944, Jacksonville 441.6 x 57 x 27.8 7201 gt
 c) *Transamerican*, '63; b) *Hoosier State* '55; a) *Hugh J. Kilpatrick*
 '46. To Hope Nav. Corp., Monrovia (Li); renamed e) *Grand Hope*

AEGEAN SUN--see *Mindanao Logger*

AFOUNDRIA (US) Waterman SS Corp., Mobile 1-0-0.0.0.0.0
 1943, Mobile 468.8 x 63.1 x 27.5 6065 gt
 To Litton Industries Leasing Corp., Wilmington, Del.

AGHIA MARINA (Gr) Porto Blanco Cia. Nav. S.A., Syra 0.0.0.0.2.1.1
 1954, Sunderland 483.10 x 62.4 x 26.9 6498 gt
 To Cia. de Nav. Golfo Azul S. A., Syra (Gr).

AGIOGALUSENA--see *VULCANO*

AGIOI ANARGYROI (Gr) Marinivicto Cia. Nav., Piraeus 0.0.0.0.0.1.1
 1937, Hamburg 451.3 x 58.9 x 24 5613 gt
 a) *ALPHARD*, '64, 0.0.3.3.2.0.0
 To Astrobelo Cia. Nav. S.A., Piraeus (Gr); ren. c) *Garoufalia*
 0.0.0.0.1.0.0

ALEPPO (Sw) Rederi A/B Fraternitas, Gothenburg 0.0.0.0.1.0.0
 1960, Malmo 500.2 x 65.2 x 28.7 10,191 gt
 To Cie. Mar. des Chargeurs Reunis, Dunkirk (Fr); renamed b) *Douka*

ALGOL (Pa) Alvion SS Corp., Panama. Tanker. 2.0.0.0.0.0.0
 1952, Clydebank 559 x 72.4 x 30.10 12,618 gt
 To Algol SS Corp., Monrovia (Li)

ALMAK (Pa) Alvion SS Corp., Panama. Tanker 2.0.0.0.0.0.0
 1952, Clydebank 559 x 72.4 x 30.10 12,618 gt
 To Almak SS Corp., Monrovia (Li)

ALPHARD--see *AGIOI ANARGYROI*

AMACITA (No) I/S Magnolia, Oslo (Stove Ship'g, mgr.) 0.1.0.3.0.1.0
 1957, Copenhagen 518.2 x 64.2 x 30.3 9959 gt
 To Vaboens Rederi a/S & Vaboens Shipping A/S, Kristiansand (No);
 Renamed b) *HERVANG* 0.0.0.0.0.0.1

AMAZON--see *IRISH PINE*

Amilia (Li) Mar Rojo Cia. Nav. S. A., Monrovia
 1943, Portland, Oregon 441.6 x 57 x 27.8 7184 gt
 b) *CANNAREGIO*, '64; a) *William H. Dall*, '47
 To World Tradeways Shipping Ltd., Monrovia (Li);
 Renamed d) *Tradeways II*. (See also "Casualties," *Tradeways II*.)

ANGELIC--see *SEVERN RIVER*

ANGLO (No) D/S A/S Anglo, Haugesund 2.3.0.1.1.1.0
 1943, Alameda 258.10 x 42.2 x 18 1846 gt
 b) *Benue*, '52; a) *Benjamin Tay*, '51
 To D/S A/S Ryvingen, Haugesund (No); renamed d) *Lindvang*

ANITA BOLTEN--see *Gina N.*

ANNA PRESTHUS--see *BOCHUM*

ANNE QUINN (US) Earl J. Smith & Co., Inc., New York 0.0.0.0.1.0.0
 1943, Wilmington, N. C. 417.9 x 56.11 x 27.8 7255 gt
 e) *Joseph Feuer*, '58; d) *Albion*, '56; c) *Polarus Sailor*, '51,
 b) *Governor Comer*, '49; a) *John M. Moorehead*, '47.
 To Carlton Ship'g Co. Ltd., Monrovia (Li); ren. g) *Brazos Trader*

ANTARCTIC OCEAN (Sw) A-B Océankompaniet, Gothenburg 0.0.1.0.0.0.0
 1948, Gothenburg 394.1 x 53.1 x 23.5 4030 gt
 To Jade Co. Inc., Piraeus (Gr); renamed b) *Kerkira*

ARIETTA VENIZELOS--see *Atlantic Rio*

Atlantic Rio (Li) Tanker Transport Inc., Monrovia. Tanker
 1956, Hoboken 530.7 x 70.2 x 30.8 12,230 gt
 To Ocean Transport Ltd., Piraeus (Gr);
 Renamed b) *ARIETTA VENIZELOS* (est.) 0.0.0.0.0.0.1

Barbro Bratt (Sw) G. Bratt & Co., Gothenburg
 1948, Sunderland 258.7 x 42 x 17.7 1534 gt
 b) *Skotfoss*, '61; a) *MAKEFJELL*, '58 Pre-Seaway
 To Kyknos Shipping Corp., Monrovia (Li); renamed d) *Kyknos*
 To Equatorial Shipping Co. S. A., Monrovia (Li).

BARON BERWICK (Br) Kelvin Shipping Co., Ardrossan 1.0.0.0.0.0.0
 1956, Shields 456.7 x 57.6 x 25.9 5471 gt
 To Maureen Corp., Port au Prince (Haiti); renamed b) *Filtric*

BAY MASTER (No) I/S Master, Oslo 0.0.0.1.0.1.0
 1958, Uddevalla 467.2 x 60.11 x 29.8 8695 gt
 a) *Golden Master*, '60.
 To Wilh. Wilhelmsen, Tonsberg (No); renamed c) *Tysla*

BEECHMORE (Br) Johnston Warren Lines Ltd., Liverpool 3.3.3.3.0.0.0
 1954, Burntisland 372 x 52.10 x 21.9 3596 gt
 Renamed b) *English Prince*

BELLATRIX--see *Vincenzo Jacomino* (Transfers) and *Orion* (Scrapping)

BIGHT KNOT--see *Choluteca*

BIRMINGHAM CITY--see *Semporna Bay*

BOCHUM (Ge) Fried. Krupp Reederei, Hamburg 0.1.1.1.1.1.0
 a) *Virginia Bolten*, '60. To Johs. Presthus, Bergen (No);
 renamed c) *ANNA PRESTHUS* 0.0.0.0.0.0.1

BOGATYR--see *Leiv Eiriksson*

BOHEME (Sw) Rederi A/B Wallenco, Stockholm 0.0.1.0.2.3.0
 1953, Sunderland 477.7 x 61.9 x 26.11 6564 gt
 To Redfern Shipping Co. Ltd., London; renamed b) *Nils Amelon*

BORNHEIM (Ge) Unterweser Reederei G.m.b.H., Bremen 0.0.4.0.0.0.0
 1953, Emden 398.7 x 50.10 x 21.1 3387 gt
 To Partenreederei ms "Ernst Mittman," Flensburg;
 Renamed b) *Ernst Mittman*

BRIDGEHAMPTON (US) Tramp Shipping & Oil Trans., N.Y. 0.0.0.½.0.0.0
 1945, Portland, Oregon 607.5 x 75.2 x 33.6 15,947 gt
 b) *CAPTAIN NICHOLAS SITINAS*, '62; 0.0.0.½.0.0.0
 a) *Government Camp*, '58
 To The Platte Transport Inc., New York; renamed d) *Platte*
 (Note: *BRIDGEHAMPTON* is a former tanker, converted & reb. 1962.)

C. A. Crosbie (Ca) Chimo Shipping Ltd., St. Johns
 1952, Birkenhead 258 x 43.1 x 18.4 1803 gt

a) **MANCHESTER EXPLORER**, '63
Renamed c) *P. M. Crosbie*
CAIRNAVON--see **SCHIAFFINO FRERES**
Cairndhu (Br) Cairn Line of SS Ltd., Newcastle
1952, Hartlepool 444.6 x 60.2 x 27 7503 gt
To Manchester Liners Ltd., Manchester;
Renamed **MANCHESTER EXPORTER** 0.0.0.0.0.0.4
CAIRNESK--see **MANCHESTER FAITH**
CAIRNFORTH (Br) Cairn Line of SS Ltd., Newcastle
1958, Burntisland 459.6 x 59.11 x 27.6 8105 gt
Renamed b) **MANCHESTER FREIGHTER**
CAIRNGLEN--see **MANCHESTER FAME**
Cairngowan (Br) Cairn Line of SS Ltd., Newcastle
1952, Hartlepool 444.6 x 60.2 x 27 7503 gt
Renamed b) **MANCHESTER ENGINEER** 0.0.0.0.0.0.3
CALLIOPE (Li) Helicon Mar. Co., Monrovia
1943, Los Angeles 511.6 x 57 x 26.2 8540 gt
d) **THERMAIKOS**, '63; c) *Andros City*, '60;
b) *Antipolis*, '57; a) *James Cook*, '55.
0.0.0.0.1.0.0
To Triumph Shipping Corp., Monrovia (Li); renamed f) *Vancalt*
(Note: **CALLIOPE** is a former tanker converted in 1955 and lengthened in 1956. As *Vancalt* she visited the Seaway in 1966.)
CANNAREGIO--see *Amilla*
CANUK TRADER (Br) Canuk Lines Ltd., Nassau 0.0.0.0.0.1.0
1944, Sorel 440.6 x 57.2 x 27.8 7151 gt
c) *Grande Hermine* '60; b) *Haverton Hill* '55; a) *Kawartha Park* '50
To Doreen SS Corp. S. A., Monrovia; renamed e) *Eliza*
CAPE RION--see *Visayan Merchant*
CAPTAIN NICHOLAS SITINAS--see **BRIDGEHAMPTON**
CAPTAIN THEO--see *Oriental Banker*
CARINA--see *La Plata*
Carolina (Li) Maritime & Industrial Corp., Monrovia
1947, Sunderland 457.2 x 59.6 x 25.6 5605 gt
b) *Recife*, '63; a) **HARTISMERE**, '62
To Saint Spyridon Maritime Co., Monrovia (Li); renamed d) *Tarseus*
CELESTE--see *Nadine*
CHARLEVOIX--see *Stella Oceanica*
CHATHAM (US) Sea-Land Service Inc., Wilmington, Del. 0.0.0.1.0.1.0
1944, Wilmington, N. C. 459.1 x 63.9 x 27.7 8175 gt
c) *Hawaiian Wholesaler* '61; b) *Ventura* '61; a) *Todd*, '47
To U. S. Department of Commerce, Wilmington, Del.
Choluteca (Ho) Empresa Hondurena de Vapores S.A., Puerto Cortes
1945, Superior, Wis. 338.8 x 50.3 x 23.5 3599 gt
a) **BIGHT KNOT**, '47 Lake-built
To Chatham Shipping Co., Monrovia (Li); renamed c) *Apostolakis T.*
City of Leicester (Br) Ellerman Lines Ltd., Liverpool
1947, Sunderland 373 x 50.11 x 22.8 3603 gt
a) *Egyptian*, '64. To Gardenia Shipping Co. S. A., Piraeus (Gr);
renamed c) **GARDENIA** 0.0.0.0.0.0.1
CLIO (Ge) Hans Kruger G.m.b.H., Hamburg (mgrs.) 3.2.0.1.0.3.3

1959, Papenburg 321.2 x 46.9 x 22.10 3126 gt
Renamed b) *Andria* In Seaway '66
Comet Beauty (Li) Data SS Corp., Monrovia. Tanker
1953, Kiel 569.6 x 71.8 x 30.6 12,107 gt
b) *Afaea*, '63; a) **FAGERFJELL**, '62
To Dragon SS Co., Monrovia (Li)
CONCORDIA--see *Free Enterprise*
Concordia Suncliff (No) A. I. Langfeldt & Co., Kristiansand, mgrs.
1958, Kristiansand 456.6 x 58.7 x 29.1 7864 gt
a) **SUNCLIFF**, '64. Renamed c) *Suncliff* 1.0.0.0.0.0.0
DAGALI--see *Stolt Lady* (Conversions and Rebuilding)
DANAHOLM (Gr) "Danoas" Cia. Nav. S. A., Piraeus 1.0.0.0.0.0.0
1939, Helsingor 428.6 x 53.2 x 20.4 3573 gt
To John P. Katsoulakos, Piraeus (Gr); renamed b) *Panagiotis N. K.*
DEALMOUTH (Br) Federal Commerce & Nav. Co. Ltd. 0.0.0.3.5.5.5
1949, Haverton Hill 523 x 68.5 x 27.4 10,630 gt
c) **SEAWAY STAR**, '62; b) *Janina*, '60; 0.2.4.0.0.0.0
a) *Eleonora Maersk*, '58. To Pacific & Atlantic Ltd., London.
DEMETRA--see **ROSSANA**
DONA IO--see *Romano*
DOVE (Li) Colombine Shipping Co., Monrovia 1.0.0.0.0.1.0
1943, Baltimore 441.9 x 57 x 27.9 7172 gt
d) *Gleniffer*, '58; c) *Taltybius*, '54; b) *Samarkand*, '47;
a) Launched as *Peter Cooper*
To Patriarch SS Co., Monrovia (Li); renamed f) *Patraic Sky*
DUNNET HEAD (Br) A. F. Henry & MacGregor Ltd., Leith 0.0.0.0.0.0.1
1953, Leith 192.10 x 31.2 x 13.3 749 gt
To Euclide Bouchard, Quebec. (Note: **DUNNET HEAD** probably made her Seaway trip under new Canadian owners; she was later renamed **CONRAD MARIE** (ii) in 1966.)
EASTHAMPTON (US) Seatrade Corp., New York 0.0.0.1.0.0.0
1944, Chester 602.6 x 75.2 x 33.7 15,995 gt
d) *Lyra*, '62; c) *Amanda*, '61; b) *Alexandra*, '55; a) *James Island*, '48. To Merrimac Transport Inc., New York; renamed f) *Merrimac*
(Note: **EASTHAMPTON** is a former tanker converted and lengthened in 1962.)
Eastward (Li) Eastward Shipping Corp. Ltd., Monrovia
1942, Portland, Oregon 441.6 x 57 x 27.8 7282 gt
c) **PEGASUS**, '64; b) *Runa*, '53; a) *George L. Curry*, '47.
To United Forward Marine Corp., Monrovia; ren. e) *United Forward*
EDENWOOD--see *Paralos*
EFTYCHIA (Gr) Demetrios P. Margaronis, Piraeus 0.0.1.0.0.0.0
1943, Burntisland 436 x 58 x 25.7 5183 gt
a) *Riverton*, '60. To Cia. Nav. Pearl, S.A. (Pa); ren. c) **Boaz**
Esperanza (Gr) Marprimera Cia. Nav. S.A., Piraeus
1943, North Vancouver 441.6 x 57.2 x 27.8 7207 gt
e) **MARCOS**, '63; d) *Worldtraveller*, '53; c) *Papachris-tidis Vassilios*, '49; b) *Green Gables Park*, '46; a) Launched as **Fort Esperance**.
To Kwong Hing Shipping Co. S. A., Panama; renamed g) *Kwong Lee*

FAGERFJELL--see *Comet Beauty*

FAIRWAY (Ge) Fairplay Schleppdampfsch. Reed. 0.0.0.0.1.0.0
 1953, Hamburg 224.2 x 35.7 x 17.11 1406 gt
 a) **FERDIA**, '58 Pre-Seaway
 To Skips A/S Rinto, Haugesund (No); renamed c) *Felto*

FALZAREGO--see *Grazia Prima*

FANMAR (Li) Milos Maritime Co. Ltd., Monrovia 0.0.0.1.0.0.0
 1942, Mobile 441.6 x 57 x 27.8 7259 gt
 e) **TOXON**, '62; d) *Montego Sea*, '61; c) *Pacific Explorer*; b) *Grain Shipper*, '58; a) *Joel Chandler Harris*, '56.
 To Lilly Nav. Inc., Monrovia (Li); renamed g) *Fanlil*

FEDERICO PARODI (It) Soc. per Az. Emanuele V. Parodi 0.1.0.0.0.0.0
 1958, Genoa 484.3 x 62.10 x 29.1 8644 gt
 To Pan-Islamic SS Co. Ltd., Karachi (Pakistan); renamed b) *Safina-e-Rehmat*

FELIS (Sw) Rederi A/B Jan, Gothenburg 0.0.0.0.1.0.0
 1962, Fredrikstad 449.11 x 61.1 x 28.6 7494 gt
 To Rederiet for ms "Felis", Gothenburg

FERDIA--see **FAIRWAY**

FERNSPRING (No) A/S Glittre & A/S Marina, Oslo 0.0.0.0.0.3.0
 1955, Greaker 371.1 x 48.3 x 20.3 2858 gt
 To Jade Co. Inc., Panama; renamed b) *Thira*

FLYING INDEPENDENT (US) American Export-Isbrandtsen 1.0.0.3.4.4.3
 1944, Wilmington, Calif. 418.4 x 60.1 x 27.7 6735 gt
 a) *Cape Domingo*, '47. To Sperling SS & Trading Corp., New York; renamed c) *Harbor Hills*

FRANCOIS L. D.--see **LA HACIENDA**

Free Enterprise (Br) Trafalgar SS Co. Ltd., London
 1940, Copenhagen 424.7 x 56.5 x 28.3 6807 gt
 b) *Caravella*, '64; a) **CONCORDIA**, '60. 1.0.0.0.0.0.0
 To Panbalco Shipping Co. S. A., (Haiti);
 To Kantara Shipping Ltd., Famagusta (Cyprus)

GARDENIA--see *City of Leicester*

GEMSTONE (Pa) Alvion SS Corp., Panama 0.0.0.0.0.1.0
 1957, Emden 503.4 x 62.4 x 29.7 9007 gt
 To Gemstone Shipping Corp., Monrovia (Li)

GEORG RUSS (Ge) Ernst Russ, mgr., Hamburg 0.2.0.2.0.0.0
 1952, Bremen 344.5 x 49.4 x 20.4 2606 gt
 To Partenreederei ms "Detlef Mittman," Flensburg;
 Renamed b) *Detlef Mittman*

GEORGIOS MANOLAKIS--see *Leleta*

Gina N. (Li) Amoudi Inc., Monrovia
 1939, Fredrikstad 300 x 44 x 18.11 1742 gt
 d) *Eichberg*, '63; c) *Brabant*, '63; b) **ANITA BOLTEN**, '60; a) *Oscar Gorthon*, '58. 1.0.0.0.0.0.0
 To P. A. Stefanis & Co., Piraeus (Gr); renamed f) *Eleni*

GOLDEN SIGMA--see *Laurel*

GOLDSTONE (Pa) Alvion SS Corp., Panama 0.0.0.0.0.1.0
 1958, Taranto 487.8 x 62.4 x 29.6 8684 gt
 a) Launched as *Moonstone*. To Goldstone Ship'g, Monrovia (Li);

Grazia Prima (It) "Costanza" S.p.a. di Nav., Genoa
 1942, Hartlepool 446.4 x 56.2 x 26.9 7031 gt
 e) **FALZAREGO**, '63; d) *Maria Mazzella*, '60; c) *Dea Mazzella*, '56; b) *Radiotelegraphiste Biard*, '50; a) *Empire Driver*, '45. To Luzmar S. A., Monrovia (Li); renamed g) *Missouri*

GUDRID--see *Harar*

GURDEN GATES--see *Irida*

Harar (Et) Red Sea Development Corp. (Ethiopia)
 1922, Stavanger 254.6 x 37.4 x 16.1 1303 gt
 b) *Breza*, '64; a) **GUDRID**, '60. Pre-Seaway
 To Nav. Maritime Bulgare (Bulgaria); renamed d) *Algeneb*

HARTISMERE--see *Carolina*

HELGA SCHRODER (Ge) Reederei Richard Schroder 0.0.0.0.0.1.0
 1958, Bremerhaven 504.3 x 61.2 x 27 6500 gt
 To Muhammadi SS Co. Ltd., Karachi (Pakistan); renamed b) *Al Hasan*

HELSINGFORS--see **RINA**

HERALD--see *Korthi*

HERTHA (No) Skibs A/S William Hansens Rederi, Bergen 3.0.0.5.0.0.0
 1954, Glasgow. Tanker 305.4 x 44 x 18.6 2588 gt
 To Sildar & Fiskimjolsverksmidjan h/f, Reykjavik (Iceland); renamed b) *Sildin*

HERVANG--see **AMACITA**

HOEGH SKEAN (No) Leif Hoegh & Co. A/S, Oslo, mgrs. 0.1.2.0.0.1.3
 1954, Gothenburg. Tanker. 559.5 x 70 x 30.4 11,738 gt
 To I/S Saga Surf, Oslo (No); renamed b) *Saga Surf*

HOEGH TRADER (No) Leif Hoegh & Co. A/S, Oslo, mgrs. 1.0.0.0.0.0.0
 1959, Kiel 563.8 x 73.8 x 33.7 15,016 gt
 To Kommandittselskapet Billabong (No); renamed b) *Star Ballarat*

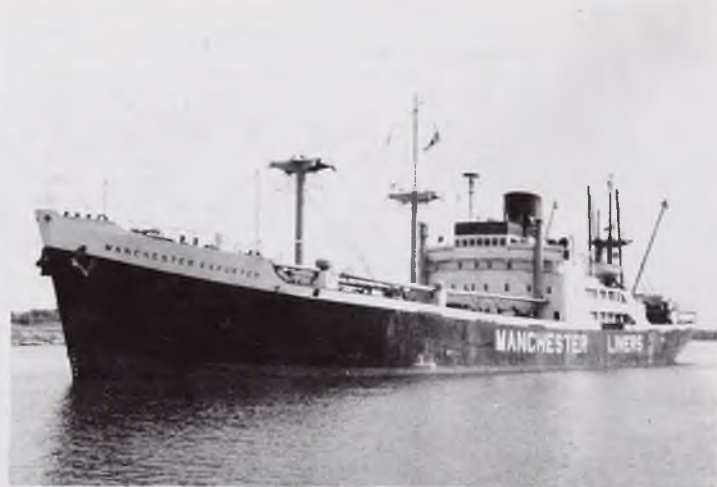
ICE PEARL (No) Kyvik & Co. A/S, Haugesund Pre-Seaway
 1956, Strasbourg 212 x 32.11 x 11.11 497 gt
 To Helge Kuyvik Partr., Haugesund (No); ren. b) *Atlantic Princess*

Irene (Li) Continental Oceanic Nav. Corp. Ltd., Monrovia
 1956, Yokosuka 524.7 x 62.7 x 30.8 9975 gt
 b) **ZAKYNTHOS**, '64; a) *National Power*, '61 0.0.0.1.0.0.0
 Renamed d) *Zakynthos*. To Far Eastern Nav. Corp., Taipei (Taiwan), and renamed e) *Caroline*.

Irex (No) Hans Kiaer & Co. A/S, Fredrikstad. Tanker
 1953, Belfast 487.5 x 59.6 x 27.6 8280 gt
 To Skips A/S Bjornvik II, Fredrikstad (No); renamed
 b) **STOLT BJORNV.** To Samiet Stolt Atlantic, 0.0.0.0.0.0.2
 Haugesund (No); renamed c) *Stolt Atlantic* (in Seaway, 1966).

Irida (Gr) P. Morfopoulou & A. Ermogenis, Piraeus
 1943, Superior 258.9 x 42.3 x 18.1 1760 gt
 d) *Arno*, '63; c) *Cesare Corsini*, '53; b) *Baltic Queen*, '50;
 a) **GURDEN GATES**, '49.
 To T. & G. J. Moustogiannis, Piraeus (Gr); renamed f) *O. Kalos Samaritis*. To C. A. Athanassiades & G. N. Bournis, Piraeus (Gr) and renamed g) *Three Stars*

IRISH PINE (Ir) Irish Shipping Ltd., Dublin 0.3.5.5.3.3.1
 1948, Shields 436 x 56.1 x 24.4 5021 gt



PHOTOGRAPHS BY GEORGE AYOUB

Above, left: *Cairnglen*

Above, right: *Manchester
Exporter*

Lower left: *Bornheim*

(See Name & Ownership Changes)

To Cia. Acarnania de Nav. S. A., Chios (Gr);
renamed b) *AMAZON* 0.0.0.0.0.0.?

JACOB'S LADDER--see *Republica del Ecuador*

JOHANNA (Ge) Christian F. Ahrenkiel, Hamburg, mgr. 3.2.4.4.4.0.1
1953, Hamburg 240.9 x 41.10 x 21.3 1980 gt
To Cie. Libanaise Armement et Transports Maritimes (Lebanon);
renamed b) *El Mina*. (Note: *JOHANNA* was on charter to Cunard's
Mediterranean service during the year, and was transferred in July
to their Liverpool-Great Lakes service. See also *LEABETH*.)

JULIN (Ge) Hans Kruger G.m.b.H., Hamburg (mgrs.) Pre-Seaway
1952, Rendsburg 202.6 x 30.6 x 14.6 854 gt
To A/S Skaanang & Co., Haugesund (No); renamed b) *Skaanang*

KATE GRAMMERSTORF (Ge) Karl Grammerstorf Schiff. 0.1.0.0.0.0.0
1929, Flensburg 353.4 x 46.2 x 21.9 2581 gt
a) *Barnbek*, '49. To Elias E. Tomboulis (Gr); ren. e) *Eleftherios*

KATIA BANCK (Sw) Otto Bancks Rederi A/B, Helsingborg 3.4.1.2.1.4.0
1937, Sunderland 414.2 x 56 x 23.4 4298 gt
b) *Katia*, '58; a) *St. Rosario*, '52.
To Ypermachos Cia. Nav. S.A., Piraeus (Gr); renamed d) *Ypermachos*

KENOSHA--see *Lars Viking*

Kettara (Mo) Cie. Miniere & Metallurgique, Casablanca
1953, Emden 231.10 x 34.10 x 14.6 830 gt
a) *LISSY SCHULTE*, '63. 3.0.0.0.0.0.0
To O. H. Meling, Stavanger (No); renamed c) *Stavodd*

KONNY M. (Ne) J. Muller, Rotterdam. Tanker. Pre-Seaway
1951, Blainville 196.2 x 29.7 x 13.1 500 gt
To N. V. Naviganda, Ghent (Belgium); renamed b) *Jupiter*

Korthi (Gr) Gotham Cia. Nav. S. A., Piraeus
1943, Wilmington, N. C. 441.6 x 57 x 27.8 7242 gt
d) *HERALD*, '61; c) *Seaherald*, '54; b) *Governor* 4.4.0.0.0.0.0
Graves, '52; a) *Kemp P. Battle*, '47.
To Marine Development & Supply S.A. (Li); renamed f) *Eastbound*

KRONOLAND (Sw) Angfartygs A/B Tirfing, Gothenburg 0.0.0.0.1.1.0
1951, Gothenburg 454.4 x 58.1 x 25.2 5078 gt
To Rederi A/B Virginia, Jonstorp (Sw); renamed b) *Virginia*

LA BAHIA--see *San John*

LA HACIENDA (Br) Buries Markes Ltd., London 0.0.3.3.1.4.0
1953, St. Nazaire 490 x 60.2 x 25.5 5875 gt
a) *FRANCOIS L. D.*, '61 3.0.0.0.0.0.0
To Sefton SS Co. Ltd., London; ren. c) *VALPARAISO* 0.0.0.0.0.0.3

La Plata (Pa) Cia. Nav. La Paloma S. A., Panama
1930, Nakskov 266.4 x 39.2 x 16.11 1600 gt
e) *CARINA*, '58; d) *Randa Dan*, '56; c) *Randa*, '47; 0.3.0.2.0.0.0
b) *Basse Terre*, '37; a) *Else*, '34. To Francesco Riviaccio, Torre
del Greco (It); renamed g) *Beato Vincenzo*.

LA PRADERA (Br) Buries Markes Ltd., London 1.0.0.2.1.0.0
1956, St. Nazaire 453.10 x 61.1 x 27.3 6980 gt
To "Bulet" State Economic Enterprise, Varna (Bulgaria); renamed
b) *Sapphire*

LAKE HURON--see *Mister Stathis*

Lars Viking (No) D/S A/S Laly, Oslo
1945, Superior 338.8 x 50.4 x 23.5 3897 gt
c) *Torian*, '63; b) *Rio Dale*, '59; a) *KENOSHA* Lake-built
To Soc. de Forages en Mer "Neptune," (Fr); renamed e) *Neptune V*

Laurel (Br) Pluto Shipping Co. Ltd., Hong Kong
1946, Burntisland 436 x 57.3 x 25.10 4810 gt
c) *GOLDEN SIGMA*, '64; b) *Cape Clear*, '63; a) *Derry-* 0.0.0.0.1.0.0
clare, '52. To Laurel Nav. Co. Ltd., Hong Kong

LEABETH (Ge) Leo Adams Reederei, Hamburg 3.4.0.3.4.0.2
1956, Hamburg 258.1 x 42.6 x 21.6 1243 gt
(Note: *LEABETH* was on charter to Cunard's Mediterranean service
during the year, and was transferred in July to their Liverpool-
Great Lakes service. See also *JOHANNA*.)

Leiv Eiriksson (No) A/S Laboremus, Oslo
1958, Lubeck 478.8 x 61.10 x 30 8861 gt
To Rederi A/S "Myren," Copenhagen (De);
renamed b) *BOGATYR* 0.0.0.0.0.0.1

Leleta (Gr) Motortank Co., Piraeus. Tanker
1939, Hamburg 492.9 x 66.1 x 28.4 10,060 gt
c) *GEORGIOS MANOLAKIS*, '64; b) *Laila Stange*, '58; 0.2.3.4.0.0.0
a) *Hoegh Scout*, '53. To Elm Shipping Co. Inc., Piraeus (Gr)

LINGESTROOM (Ne) N. V. Hollandsche Stoomb. Maats. Pre-Seaway
1947, Goole 234.4 x 35.4 x 13.10 748 gt
To F. C. Georgopoulos and A. N. Anthanasiades, Piraeus (Gr);
renamed b) *Nissos Mykonos*

LISSY SCHULTE--see *Kettara*

LONDON SPIRIT (Br) London & Overseas Freighters Ltd. 0.2.0.0.0.0.0
1952, Sunderland. Tanker 505.6 x 67.7 x 29.1 10,176 gt
To Mayfair Tankers Ltd., Piraeus (Gr); renamed b) *Salamis*

LUKSEFJELL (No) Olsen & Ugelstad, Oslo (managers) 4.4.4.0.0.0.0
1952, Fredrikstad 258.7 x 42.7 x 18.3 1534 gt
To Seaways Co. Inc., Piraeus (Gr); renamed b) *Akrotiri*

LYCIA (Br) Cunard Steamship Co. Ltd., Liverpool 0.0.0.0.0.4.2
1954, Port Glasgow 348.4 x 49.10 x 23.4 3534 gt
To Diapora S. A. (Gr); renamed b) *Flora N.*

MAIDEN CREEK (US) Waterman Steamship Corp., Mobile 0.0.0.0.0.1.0
1946, Chickasaw 468.8 x 63.2 x 27.5 6065 gt
To Sea-Land Service Inc., Wilmington, Del.

MAKEFJELL--see *Barbro Bratt*

MALMANGER (No) Westfal-Larsen & Co. A/S, Bergen 0.0.0.0.0.1.1
1950, Malmo 533.3 x 63.2 x 32.3 12,240 gt
To Integrity Carriers Inc., (Li); renamed b) *Grand Integrity*

Manaqui (Ho) Empresa Hondurena de Vapores S. A., Puerto Cortes
1945, Duluth 338.8 x 50.1 x 23.5 3736 gt
a) *SHAMROCK KNOT*, '47 Lake-built
To Rendondo Ship'g Co. Inc., Monrovia (Li); renamed c) *Victoria T.*

MANCHESTER ENGINEER--see *Cairngowan*
MANCHESTER EXPLORER--see C. A. Crosbie
MANCHESTER EXPORTER--see *Cairndhu*

MANCHESTER FAITH (Br) Manchester Liners Ltd. 3.4.3.4.4.4.0

| | | | |
|--|----------------------|---------------|--|
| 1959, Sunderland | 378.2 x 50.3 x 24.6 | 4459 gt | <i>Mosfield</i> (No) A/S Mosgulf Shipping Co., Kristiansund |
| Renamed b) <i>CAIRNESK</i> | | 0.0.0.0.0.0.? | 1957, Dumbarton 492.7 x 63.2 x 28.7 9367 gt |
| <i>MANCHESTER FAME</i> (Br) Manchester Liners Ltd. | | 0.3.3.4.4.3.0 | a) <i>VALETTA</i> , '64. To Astrobrillo Cia. Nav. S. A., Piraeus; |
| 1959, Sunderland | 378.2 x 50.3 x 24.6 | 4462 gt | renamed c) <i>Orient Exporter</i> |
| Renamed b) <i>CAIRNGLEN</i> | | 0.0.0.0.0.0.? | <i>MOUNT EVANS</i> --see <i>Yucatan</i> |
| <i>MANCHESTER FREIGHTER</i> --see <i>Cairnforth</i> | | | <i>Mèdine</i> (Gr) Toro Shipping Corp., Piraeus |
| <i>MARCOS</i> --see <i>Esperanza</i> | | | 1944, Pictou 328 x 46.6 x 20.10 2854 gt |
| <i>MARGIT</i> (Sw) Stena A/B, Gothenburg | | Pre-Seaway | c) <i>CELESTE</i> , '61; b) <i>Sundial</i> , '58; a) <i>Wentworth Park</i> , 0.1.0.0.0.0.0 |
| 1935, Landskrona | 256.10 x 35.8 x 15.1 | 993 gt | '48. To Pasmø Shipping Corp., Monrovia (Li); renamed e) <i>Azar</i> |
| a) <i>Warun</i> , '57. To Levante Shipping Co. Ltd. (Cyprus); | | | <i>NATIONAL UNITY</i> --see <i>UNITY</i> |
| renamed c) <i>Aristides</i> | | | <i>NORDERHOLM</i> (Ge) Patzlaff & Zuckschwerdt G.m.b.H. 1.0.4.3.0.0.0 |
| <i>MARIA STATHATOS</i> (Gr) Mrs. G. N. Stathatos et al | | 0.0.0.0.1.0.0 | 1955, Kiel 258.6 x 42.10 x 19.1 1559 gt |
| 1943, Portland, Maine | 441.6 x 57 x 27.9 | 7204 gt | To Knud Knudsen Reederei, Kiel (Ge); renamed b) <i>Olhorn</i> |
| a) <i>Joseph Warren</i> . To Deko Trading S. A. (Li); renamed c) <i>Albatros</i> | | | <i>NORMANDIET</i> (De) A/S Det. Dansk-Franske D/S 1.0.0.0.0.0.0 |
| <i>MARIETTA T.</i> --see <i>THEOSKEPASTI</i> | | | 1947, Helsingør 360 x 51 x 20.9 2811 gt |
| <i>MARINDI JUBAMI</i> --see <i>WIRTA</i> | | | To Arirudo Cia. Nav. S. A., Piraeus (Gr); renamed b) <i>Pandora</i> |
| <i>MARIONGA MARIS</i> (Gr) Ardena S. A., Andros | | 0.0.0.0.0.1.0 | <i>NORTH HILLS</i> --see <i>MORMACTEAL</i> |
| 1946, Sunderland | 483 x 62.11 x 29 | 9172 gt | <i>NORTH LADY</i> --see <i>Ypapanti</i> |
| b) <i>Bir Hakeim</i> , '58; a) Launched as <i>Empire Gala</i> . To Everlucky Nav. | | | <i>NORTH PAGE</i> (Gr) Peonia Cia. Nav. S. A., Piraeus 0.3.1.1.0.0.0 |
| Co. Ltd., Monrovia (Li); renamed d) <i>Everlucky</i> | | | 1952, Fredrikstad 388 x 57.4 x 22.2 3964 gt |
| <i>Marstenen</i> (No) Skibs A/S Vilhelm Torkildsens Rederi, Bergen | | | a) <i>ORANIA</i> , '60. To Asimarfield Shipping Corp., 3.0.0.0.0.0.0 |
| 1959, Viareggio | 374 x 50.10 x 25 | 2499 gt | Monrovia (Li); renamed c) <i>Northfield</i> |
| b) <i>Bukken</i> , '62; a) <i>MARSTENEN</i> , '60 | | 1.0.0.0.0.0.0 | <i>OLAU JARL</i> --see <i>Sardinia</i> |
| To Hetland Shipping I/S, Copenhagen (De); renamed d) <i>Susaa</i> | | | <i>ORANIA</i> --see <i>NORTH PAGE</i> |
| <i>MIHALIS ANGELOS</i> (Gr) Maradelanto Cia. Nav. S. A. | | 0.0.0.1.0.0.0 | <i>ORIENT MERCHANT</i> (Gr) Orient Mid-East Lines Inc., 0.1.0.1.2.2.½ |
| 1941, Wallsend | 447.6 x 56.2 x 26.3 | 7024 gt | 1944, Dundee 496.6 x 64.5 x 29.8 9894 gt |
| d) <i>Clervaux</i> , '60; c) <i>Anvers</i> , '52; b) <i>Belgian Seaman</i> , '46; | | | b) <i>Eemdyk</i> , '60; a) <i>Terborch</i> , '46. To Labrador Cia. Nav. S. A., |
| a) <i>Empire Masfield</i> , '42. To Celestial Shipping Corp. S. A., | | | Monrovia (Li); renamed d) <i>ZAMBEZI</i> 0.0.0.0.0.0.½ |
| Panama (Pa); renamed f) <i>Gloria</i> | | | (See also "Casualties") |
| <i>Mindanao Logger</i> (Li) Republic Log Carriers Inc. S.A., Monrovia | | | <i>Oriental Banker</i> (Li) Cia. Maritima Ador S. A., Monrovia |
| 1944, Montreal | 441.6 x 57.2 x 27.8 | 7058 gt | 1943, Tacoma 525.2 x 69.7 x 28.7 7993 gt |
| d) <i>AEGEAN SUN</i> , '63; c) <i>Violando</i> , '58; b) <i>Mont</i> 1.0.0.0.0.0.0 | | | b) <i>CAPTAIN THEO</i> , '64; a) <i>HMS Searcher</i> , '52 0.0.4.5.0.0.0 |
| <i>Sandra</i> , '53; a) <i>Alexandria Park</i> , '46. To Pacific Coast Shipping | | | To Atlantic Far East Lines Inc., Monrovia (Li). (Note: <i>Oriental</i> |
| Co., Monrovia (Li); renamed f) <i>Ocean Logger</i> | | | <i>Banker</i> was converted to a bulk carrier in 1952, and lengthened in |
| <i>Mister Stathis</i> (Gr) G. Apostolopoulos et al, Piraeus | | | 1957.) |
| 1917, Chicago | 261 x 43.6 x 17.10 | 1860 gt | <i>OVERSEAS JOYCE</i> (US) Overseas Carriers Corp., N.Y. 0.0.0.1.0.1.0 |
| i) <i>Advance</i> , '63; h) <i>Trojan III</i> , '47; g) <i>Trojan</i> , '44; f) <i>Advance</i> , | | | 1943, Oakland 459.6 x 63.1 x 27.7 6108 gt |
| '41; e) <i>Benito</i> , '36; d) <i>Binab</i> , '35; c) <i>Cap La Heve</i> , b) <i>Serbier</i> , | | | c) <i>Ocean Joyce</i> , '61; b) <i>Mobilian</i> , '55; a) <i>Typhoon</i> , '48. To Sap- |
| a) <i>LAKE HURON</i> . Lake-built | | | phire SS Lines Inc., New York; renamed e) <i>Sapphire Sandy</i> |
| To Katsaros Apostolopoulos & Co., Piraeus (Gr); renamed k) <i>Agios</i> | | | <i>PALERMO</i> (Br) Ellerman's Wilson Line Ltd., Hull ?.0.0.0.0.0.0 |
| <i>Dimitrios</i> . (Note: <i>LAKE HURON</i> was originally named <i>WAR HOUND</i> . It | | | 1938, Hartlepool 354.8 x 48.1 x 22.1 2838 gt |
| is not known whether she was launched by that name.) | | | To Roussos Bros. & John Valabous, Piraeus (Gr); renamed b) <i>Kyma</i> |
| <i>MORMACOWL</i> (US) Moore-McCormick Lines Inc., N. Y. 0.0.0.0.2.1.0 | | | <i>Panocean</i> (Pa) Panocean Nav. Lines S. A., Panama |
| 1944, Oakland | 459.6 x 63 x 27.8 | 6196 gt | 1953, Cadiz 365.8 x 48 x 22.7 4085 gt |
| a) <i>White Swallow</i> , '47. To Sperling SS & Trading Corp., New York; | | | c) <i>SEA STAR</i> , '63; b) <i>Ancud</i> , '61; a) Launched as 0.0.0.0.1.0.0 |
| renamed c) <i>Old Westbury</i> | | | <i>Torremolinos</i> in 1948. To Argonautic Marine Enterprises S. A., |
| <i>MORMACTEAL</i> (US) Moore-McCormick Lines Inc., New York 0.0.0.1.0.1.0 | | | Panama; renamed e) <i>Mohican</i> |
| 1944, Oakland | 459.6 x 63 x 27.8 | 6184 gt | <i>Paralos</i> (Gr) G. & N. Angelakis, D. & S. Grigoriou & I. Maltezoú |
| a) <i>West Wind</i> , '47. To Sperling SS & Trading Corp., New York; | | | 1943, Aberdeen 258.10 x 39.1 x 17.4 1589 gt |
| renamed c) <i>NORTH HILLS</i> | | | a) <i>EDENWOOD</i> , '60 Pre-Seaway |

To Constantinos G. Ventouris, Piraeus (Gr); renamed c) *Ergina Ventouri*

PEGASUS--see *Eastward*

PERICLES--see *Skaugran*

PIETRO CANALE--see *Ville de Diego Suarez*

PINEMORE (Br) Johnston Warren Lines Ltd., Liverpool 3.3.3.2.0.0.0
1955, Burntisland 372 x 53.9 x 21.9 3597 gt
Renamed b) *African Prince*

POINT ACONI (Pa) Navitrans Ship'g Co. S. A., Panama 0.1.0.0.0.3.0
b) *Angusdale*, '48; a) *Tuxedo Park*, '46. To Salix Cia. Nav. S. A., Panama; renamed d) *Phopho Xila*.

PONT AUDEMER--see *Valfer*

PONTOS (No) Hvalfangerselsk Pelagos A/S, Tonsberg 0.0.0.0.0.1.0
1949, Hoboken. Tanker. 537.2 x 69.1 x 29.9 11,224 gt
To Tschudi & Eitzen, Oslo (managers); renamed b) *Siponto*

PRINS WILLEM VAN ORANJE (Ne) Oranje Lijn (Maats. Zeetransport) N. V., Rotterdam 3.3.4.3.4.3.0
1953, Bolnes 461.11 x 62.4 x 25.9 7328 gt
To Deutsche Seereederei, Rostock (East Germany); renamed b) *Ferdinand Freiligrath*. Passenger-cargo liner.

PRINSE IRENE (Ne) Verolme Dok & Scheepsbouw Maats. 3.3.3.4.3.0.0
1959, Hardinxveld 455.9 x 61.3 x 28.3 8533 gt
Passenger-cargo. To Republik Indonesia (Dept. Perhubungan Laut), Djakarta. Renamed b) *Tjut Njak Dhien*

PROCYON (No) A/S D/S "Neptun", Bergen 0.0.3.0.4.0.0
1949, Fredrikstad 388 x 57.4 x 22.1 3923 gt
a) *Elin Hope*, '60. To Rajkumar Lines Ltd., Calcutta (In); Renamed c) *Kr. Ashok*

Proodos (Pa) Agelef Cia. Nav. S. A., Panama 1943, Burntisland 441 x 57 x 27.4 7106 gt
b) **ST. MERRIEL**, '63; a) *Lambrook*, '51 0.0.1.3.0.0.0
To Elpis Cia. Nav. S. A., Panama; renamed d) *Elpis*

Republica del Ecuador (Ec) Flota Mercante Grancolombiana S. A. 1945, Superior 338.8 x 50.4 x 23.6 3805 gt
a) **JACOB'S LADDER**, '47 Lake-built
Renamed c) *Ciudad de Manta*. To Luzon Stevedoring Corp., Manila (Philippines); renamed d) *Laco Platypus*

RIMON (Is) Zim Israel Nav. Co. Ltd., Haifa 0.0.0.0.0.0.3
1951, Rotterdam 352.7 x 46.10 x 19.7 2373 gt
To Krethon Cia. Mar. S. A., Piraeus (Gr); renamed b) *Kastor*

RINA (Fi) Finska Fiskeri A/B, Lovisa 3.0.0.0.0.0.0
1936, Fredrikstad 258 x 42.4 x 16.5 1413 gt
b) **HELSINGFORS**, '58; a) **SVANEFJELL**, '55 Pre-Seaway
To Astrosureno Cia. Nav. S. A., Piraeus (Gr); renamed d) *Katerina*

RIO ALTO (Li) Pacific Shipping Corp. S.A., Monrovia 0.0.0.0.1.0.0
1943, Victoria 441.6 x 57.2 x 27.8 6993 gt
b) *East Hill*, '57; a) *Fort Sturgeon*, '50. To Viaguardia Cia. Nav. S. A., Monrovia (Li); renamed d) *Aktor*.

RIO MAR (Gr) Dimitri N. Carella, Piraeus 0.0.1.0.0.0.0
1944, Baltimore 441.8 x 57.1 x 27.9 7229 gt

d) *President Boshof*, '61; c) *Rio Mar*, '59; b) *Stamford Hill*, '51; a) *Sanneagh*, '47. To Marrogullo Cia. Nav. S. A., Monrovia (Li); renamed f) *Amon*

Romano (Li) Cia. Nav. Romano S. A., Monrovia. Tanker 1950, Amsterdam 521.5 x 68 x 28.4 10,429 gt
a) **TROMA**, '63 0.0.4.1.0.0.0
To Demosthenes Nav. S. A., Monrovia (Li); renamed c) **DONA IO** 0.0.0.0.0.0.1
RONACASTLE (No) Skibs A/S Agnes, Mandal 0.0.0.0.1.0.1
1962, Uddevalla 555 x 70.2 x 29.5 12,743 gt
Renamed b) *Cape Rona*

ROSSANA (Li) Austin Nav. Corp. Ltd., Monrovia 0.0.0.0.0.0.1
1944, Portland, Maine 441.6 x 57 x 27.8 7258 gt
d) **TIRYNS**, '64; c) *Confianza*, '56; b) *Mariner*, '55; 3.0.0.0.0.0.0
a) *Charles Tufts*, '51. To Aegean Ship'g Co. Inc., Monrovia (Li); renamed f) **DEMETRA** 0.0.0.0.0.0.1

RUTENFJELL (No) Olsen & Ugelstad, Oslo (managers) 3.3.4.3.0.0.0
1953, Sunderland 297.2 x 42.7 x 18.2 1886 gt
Lengthened 1960. To Seaways Co. Inc., Piraeus (Gr); renamed b) *Alcyon*

ST. MERRIEL--see *Proodos*

SAMAREITAS (Gr) Marprisa Cia. Naviera S. A., Chios 0.0.0.1.0.0.0
1940, Shields 472.6 x 58.6 x 25.6 6992 gt
a) *Afghanistan*, '62
To Cia. Minotaurus S. A., Monrovia (Li); renamed c) *Cyrenian*

San John (Le) Valerosa Compania Naviera S. A., Beirut 1940, Sunderland 442.11 x 56.6 x 25.10 5172 gt
c) **LA BAHIA**, '61; b) *Grainton*, '57; a) *Sutherland*, 1.0.1.0.0.0.0
'53. To Atlas Ship'g & Trading Ltd. (Cyprus); renamed e) *Ledra*

Sardinia (De) Olau-Line A/S, Copenhagen 1964, Helsingor 397 x 52.4 x 19.11 3064 gt
a) *Olau Jarl*, '64. Renamed c) **OLAU JARL** 0.0.0.0.0.0.3
& Cie., Dunkirk 1951, Krimpen 410 x 56.1 x 24.10 4359 gt
b) *Apsara*, '58; a) Launched as *Tohoroo*. To Marbrillo Cia. Nav. S.A., Monrovia (Li); renamed d) **CAIRNAVON** 0.0.0.0.0.0.?

SEA STAR--see *Panocean*

SEABREEZE--see *Swift River*

SEAWAY STAR--see *DEALMOUTH*

SELJE--see *Skodvik*

Semporna Bay (Br) Kinabatangan Ship'g Co. Ltd., Bristol 1946, Shields 452.1 x 56.7 x 25.5 5571 gt
b) **BIRMINGHAM CITY**, '63; a) *Baskerville*, '50. 0.0.1.2.2.0.0
Renamed d) *Victoria Bay*

SERRE--see *UNITY*

SEVERN RIVER (Pa) International Nav. Corp., Panama 0.0.4.0.0.0.0
1944, Panama City, Fla. 441.6 x 57 x 27.8 7158 gt
c) *Amstelpark*; b) *Hugo de Groot*, '50; a) *J. H. Drummond*, '47
To Cia. Eleosa Nav. S. A., Panama (Pa);



PHOTOS FROM DONALD BAUT COLLECTION

Above, left: *Flying Independent*

Above, right: *Hoegh Skean*

Lower left: *Irish Pine*

(See Name & Ownership Changes)

PHOTOS FROM DONALD BAUT COLLECTION

Above, left: *Fairway*

Lower left: *Rutenfjell*

Lower right: *Svanefjell*

(See Name & Ownership Changes)



renamed e) **ANGELIC** 0.0.0.0.0.0.1

SHAMROCK KNOT--see *Manaqui*

Skodvik (No) A/S Lehmkuhl, Oslo. Tanker
 1943, Porsgrunn 256.4 x 33.4 x 14.4 1134 gt

d) **Thuntank VI**, '62; c) **SELJE**, '60; b) **Slotteroy**, 2.1.0.0.0.0.0
 a) **Utvaer**. Lengthened, 1964. To Rederi I/S Nordtank, Aarhus
 (De); renamed f) **Laura Terkol**

SOUTH RIVER (Pa) Cia, Atlantica Pacifica S. A., 0.0.0.1.0.0.0
 1943, Wilmington, N. C. 441.6 x 57 x 27.9 7232 gt

b) **Ole Bull**, '59; a) **Sallie S. Cotten**, '43
 To Kronos Ship'g Co. Ltd., Monrovia (Li); renamed d) **Kronos**

SPIGERBORG (De) A/S D/S Vendila, Copenhagen 0.0.0.0.1.0.0
 1950, Hartlepool 333.7 x 47.1 x 19 2339 gt

To Laiva O/Y Selbi, Helsingfors (Fi); renamed b) **Rauni**

STARCLIPPER (No) A/S Star Carriers, Bergen 0.0.0.0.1.0.0
 1957, La Seyne 490.2 x 64 x 30 9999 gt

a) **Arthur Stove**, '62. To Imextracom Etablissement, Bourgas
 (Bulgaria); renamed c) **Acamar**

STARFIGHTER--see *Stavborg*

Stavborg (No) O. H. Meling, Stavanger
 1949, Bergen 299.4 x 41.2 x 17.3 1999 gt

b) **STARFIGHTER**, '63; a) **Trudvang**, '59 0.1.0.0.0.0.0
 To Skips A/S Venborg, Kopervik (No); renamed d) **Friberg**

STELLA MARIS (Gr) Sun Line Inc., Piraeus 0.0.0.0.0.0.0
 1944, Leith 255.6 x 36.7 x 14 1924 gt

d) **Capri**, '58; c) **Chilcotin**, '58; b) **HMCS Hespeler**, '47; a) **HMS Guildford Castle**, '44,
 To Alaska Cruise Lines Ltd., renamed f) **Westar**. (Note: **STELLA MARIS** was in the passenger service during 1959, but the number of trips through the Seaway is not known. En route to Vancouver for delivery to her new owners, **Westar** went aground on January 28, 1966, after an outbreak of fire aboard; she was later sold for scrapping.)

Stella Oceanica (Pa) Cia. de Nav. Indian Star Line S. A., Panama
 1944, Milwaukee 338.8 x 50.1 x 23.6 3827 gt

d) **Benny**, '63; c) **Benny Viking**, '63; b) **Benny**, '59; a) **CHARLEVOIX**, '47. (Lake-built.) To Jasolinan Securities & Shipping Inc., Panama; renamed f) **Jasolinan**.

STOLT BJORN--see *Irex*

SUNBEAR (No) D/S A/S Bjorn, Oslo 0.0.0.0.3.0.0
 1959, Trondheim 366.8 x 49.4 x 25.8 4158 gt

Renamed b) **Elg Viking**

SUNCLIFF--see *Concordia Suncliff*

SURNA (No) Skibs A/S Akersviken, Oslo 0.0.0.1.0.1.0
 1959, Kobe 488.11 x 63.8 x 30.6 9677 gt

b) **Cape Agulhas**, '61; a) Launched as **Sira**. To Unity Enterprises & Shipping Co. (Panama) S. A., Panama. Renamed d) **Ocean Prosper**. (Note: **SURNA** was previously reported as a constructive total loss following her grounding near Kobe, Sept. 25, 1964; see 1964 Seaway list, *Telescope* for May, 1966, page 123.)

SUVA BREEZE (Br) South Breeze Nav. Co., Hong Kong 0.0.1.0.0.0.0
 1943, Burntisland 430 x 57 x 25.6 4970 gt

c) **Huntsbrook**, '59; b) **Derrybane**, '51; a) **Empire Macalpine**, '47.
 To San Fernando SS Co. S. A., Panama; renamed e) **Djatingaleh**.
 (Note: **Empire Macalpine** was commissioned as a merchant aircraft carrier for war service.)

SVANEFJELL--see *RINA*

Swift River (Br) Cardinal Seafaring Lines Ltd., London
 1943, Portland, Maine 441.6 x 57 x 29.9 7251 gt

d) **John G. L.**, '64; c) **SKJELNES**, '61; 0.1.0.0.0.0.0
 b) **SEABREEZE**, '59; a) **Bartholomew Gosnold**, '48 1.0.0.0.0.0.0
 To Kallithea Shipping Co. Ltd., Famagusta (Cyprus);
 renamed f) **Kallithea**

TAMAR (Is) Zim Israel Navigation Co. Ltd., Haifa 1.0.1.0.0.0.0
 1951, Hardinxveld 352.7 x 46.10 x 19.7 2372 gt

To Kronios Cia. Maritima S. A., Piraeus (Gr); renamed b) **Kronios**

TENTO (No) E. B. Aabys Rederi A/S, Oslo 2.0.0.0.0.0.0
 1950, Burntisland 424.6 x 57 x 25.9 4750 gt

To Kie Hock Shipping (H. K.) Co. Ltd., London; renamed b) **Tong Joo**

THEOSKEPASTI (Gr) Cia. Mar. Las Perlas S. A., Andros 1.1.0.0.0.0.0
 1943, North Vancouver 441.6 x 57.2 x 27.8 7167 gt

c) **Andros Cygnet**, '57; b) **Lake Kootenay**, '57; a) **Fort Colville**, '50. Renamed e) **MARIETTA T.** 0.0.0.0.0.0.3
 Pre-Seaway

THERESE HORN (Ge) Reederei Heinrich Horn, Hamburg
 1957, Hamburg 196.5 x 30.4 x 10.10 428 gt

To Bee & Bee Fishing Corp. (Pty) Ltd., Cape Town, South Africa;
 renamed b) **Therese**.

THERMAIKOS--see *CALLIOPE*

THORSHOV (No) A/S Thor Dahl, Sandefjord, mgrs. 0.1.0.0.0.0.0
 1955, Sandefjord. Tanker. 529.9 x 64.4 x 29.7 10,314 gt

To Fru Elisabeth Brunn, Tonsberg (No); renamed b) **Sem**

TIRYNS--see *ROSSANA*

TOXON--see *FANMAR*

TRIKERI (Li) Artemision SS Co., Monrovia 0.0.0.0.1.0.0
 1944, Houston 441.6 x 57.2 x 27.8 7247 gt

c) **Cape Henry**, '62; b) **Hawaiian Lumberman**, '60; a) **Laura Drake Gill**, '47. To Kelly Shipping Corp. Ltd., Monrovia (Li); renamed e) **Dahlia**

TROMA--see *Romano*

ULYSSES (Gr) Cia. Ulysses S. A., Syra 0.0.0.0.1.0.0
 1942, Richmond, Calif. 511.6 x 57 x 26.2 8567 gt

c) **ULYSSES II**, '62; b) **Mojave**, '56; a) **David Bushnell**, '51; lengthened in 1957. 0.0.3.1.0.0.0
 To Astra Carriers Corp., Monrovia (Li); renamed e) **Narcea**

ULYSSES II--see *ULYSSES*

UNITY (Li) North Pacific Trading Co. S. A., Monrovia 0.0.0.0.0.1.0
 1943, Los Angeles 511.6 x 57 x 26.2 8562 gt

f) **SERRE**, '63 0.1.0.0.0.0.0
 e) **NATIONAL UNITY**, '61; d) **Captain N. B. Palmer**, 0.1.1.0.0.0.0
 '54; c) **Nikoklis**, '53; b) **Strathmore**, '50; a) **Albert J. Berres**,

'48. To Aris SS Co. Inc., Monrovia (Li); renamed h) *Evie W.*
(Note: *UNITY* is a former tanker converted in 1950 and lengthened in 1956.)

VALETTA--see *Mosfield*

Valfer (Mo) Charles Auguste Audibert (Monaco)
1945, Portland, Maine 441.6 x 57 x 27.9 7314 gt
b) *PONT AUDEMER*, '64; a) *Harold H. Brown*, '47 0.1.0.0.0.0.0
To Pan African Atlantic Corp. Inc., Panama; renamed d) *Vesper*
(See also "Casualties," *Vesper*.)

VALPARAISO--see *LA HACIENDA*

VARI (Gr) Vari Compania Maritima S. A., Syros 0.0.0.1.0.0.0
1943, Los Angeles 511.6 x 57 x 26.2 8394 gt
g) *Evinos*, '62; f) *Andros Eagle*, '60; e) *Aegeus*, '57; d) *Hess Bunker*, '54; c) *Charlotte P. Gilman*, '51; b) *Apsheron*, '48;
a) *Charlotte P. Gilman*, '44. (Note: *VARI* is a former tanker, converted and lengthened in 1955.)
To Syra Compania Maritima S. A., Syros (Gr); renamed i) *Syra*
(Note: *Syra* visited Seaway in 1966.)

Veslefjell (No) Olsen & Ugelstad, Oslo, mgrs. (Lengthened, 1960.)
1951, Fredrikstad 297.4 x 42.7 x 18.2 1851 gt
b) *Sea Carrier*, '64; a) *VESLEFJELL*, '62 3.3.4.1.0.0.0
To Seaways Co. Inc., Piraeus (Gr); renamed d) *Asteri*

Vincenzo Jacomino (It) Gennaro Jacomino, Naples
1934, Port Glasgow 362.4 x 57.1 x 22.7 4565 gt
c) *BELLATRIX*, '61; b) *Lord Byron*, '50; a) *Arcgow*, 1.1.0.0.0.0.0
'36. To Mansamar S. A., Panama; renamed e) *Orion*
(Note: See also "Scrapping," *Orion*.)

VICTORIA (Sw) Rederi A/B Virginia, Jonstorp 0.0.0.0.0.4.0
1930, Gothenburg 411.7 x 52.8 x 23.11 4184 gt
a) *Vasaholm*, '54. To Dakosta Cia. Nav. S. A., Piraeus (Gr);
renamed c) *Stavros*.

VIGRID--see *ROSTO*

Ville de Diego Suarez (Fr) Nouvelle Cie. Havraise Peninsulaire
1956, Taranto 487.6 x 62.3 x 26.7 6505 gt
a) *PIETRO CANALE*, '62
To Limani Ship'g Co. Inc., Panama; renamed c) *Sonia*

Visayan Merchant (Ph) Philippine Merchants' SS Co. Inc., Manila
1944, Montreal 441.6 x 57.2 x 27.8 7131 gt
c) *CAPE RION*, '64; b) *Orford*, '56; a) *Mount Orford* 0.0.3.0.0.0.0
Park, '50. To Alianza Oceanica Armadora S. A., Panama; renamed
e) *Mary M.* (Note: Transfer and renaming took place in 1964.)

VULCANO (It) Insulare Compagnia Sicula di Armamento 0.0.1.0.0.0.0
1943, Richmond, Calif. 441.5 x 57 x 27.8 7164 gt
a) *Hiram Bingham*, '47. To agriogalusena SS Inc., Monrovia (Li);
renamed c) *AGIOGALUSENA*

Wahehe (Ge) Dal Deutsche Afrika Linien G.m.b.H. & Co., Hamburg
1959, Elsfleth 393 x 52.7 x 22.10 3507 gt
To Van Nievelt, Goudriaan & Co.'s Stoomv. Maats. (Hamburg) G.m.b.
H., Hamburg; renamed b) *ZOSMA* 0.0.0.0.0.0.2
WASABORG (Sw) Stockholms Rederi A/B Svea, Stockholm 0.0.1.1.4.2.1

1958, Split 502.6 x 62 x 13.4 6721 gt
To Torrence Nav. Co., Monrovia (Li); renamed b) *Gertrud Therese*

WIRTA (Fi) Suomen Tankkilaiva O/Y, Helsingfors 0.1.3.0.0.0.0
1948, Shields 405.10 x 60.4 x 23.10 4688 gt
b) *Calanda*, '55; a) *Viktun*, '51. To Andmarc Shipping Corp.,
Monrovia (Li); renamed d) *MARINDI JUBAMI* 0.0.0.0.0.0.1
WORLD JONQUIL (Li) Dorset Corp., Monrovia 0.0.0.0.0.1.0
1958, Hiroshima 503.8 x 66.8 x 30.1 10,499 gt
To Alexandra Nav. Corp., Monrovia (Li); renamed b) *Theresa*

Ypapanti (Pa) Seahorse Cia. Nav. Touristika S. A.
1941, Burntisland 436 x 58 x 27.3 6830 gt
b) *NORTH LADY*, '61; a) *Allerton*, '57 0.3.0.0.0.0.0
To First SS Co. Ltd., Keelung (Taiwan); renamed d) *Ever Fortune*

Yucatan (Li) Panolas Cia. Mar. S. A., Monrovia
1944, Portland, Maine 441.6 x 57 x 27.8 7241 gt
f) *Wyoming*, '63; e) *MOUNT EVANS*, '63; d) *National* 0.0.2.0.0.0.0
Liberty, '59; c) *John Paul Jones*, '54; b) *Nikos*, '53; a) *Sarah Orne Jewett*, '51. To Eastern Marine Corp., Monrovia (Li); renamed
h) *Eastern Argo*.

ZAKYNTHOS--see *Irene*

ZAMBEZI--see *ORIENT MERCHANT*

ZOSMA--see *Wahehe*

Rebuilding

ATHELPRINCE (Br) Athel Line Ltd., Liverpool 0.1.0.1.0.0.0
1959, Dundee 496 x 65.4 x 27.7 10,295 gt
Lengthened 63.2' to 559' by Burmeister & Wain, Copenhagen. Gross
tonnage increased to 11,687.

ATHELPRINCESS (Br) Athel Line Ltd., Liverpool 0.0.0.0.1.0.0
1960, Dundee 496 x 65.4 x 27.7 10,295 gt
Lengthened 63.2' to 559 feet by Burmeister & Wain, of Copenhagen
with gross tonnage increased to 11,687.

CARL TRAUTWEIN--see *EMMA JOHANNA*.

CRYSTAL SAPPHIRE (Br) Sugar Line Ltd., London 0.0.1.2.0.0.0
1960, Birkenhead 496 x 65.4 x 27.1 10,295 gt
Lengthened 63' to 559' by Barclay, Curle & Co., Ltd., Glasgow.
Gross tonnage increased to 11,688.

DAGALI--see *Stolt Lady*

EMMA JOHANNA (Ge) A. C. Toepfer Schiffs. m. b. H. 0.0.1.3.2.3.1
1960, Emden 509.5 x 69.8 x 32.3 11,612 gt
Lengthened and deepened by Blohm & Voss, Hamburg. New measurement
551.6 x 69.8 x 33.3; 14,653 gt. Capacity of 1250 Volkswagen cars
(charter) increased to 1570. (Note: *CARL TRAUTWEIN*, a sister
vessel, was scheduled for similar rebuilding by the same shipyard,
but *Lloyd's Register* has no record, work being completed in 1965.)

MARGIT BROVIG (No) Partrederiet Brovigtank, Farsund 0.1.0.0.2.3.1
1960, Moss 479.11 x 67.8 x 30.4 10,673 gt
Lengthened 103.6' to 583.5'; gross tonnage increased to 13,165.

Stolt Lady (No) D/S A/S Laly, Oslo (C. T. Gogstad & Co., Mgrs.)
1955, Copenhagen. Tanker. 579.7 x 71.11 x 30.3 12,632 gt
(Forward and cargo section) b) *Stolt Dagali*, '65;
a) *DAGALI*, '63. 0.1.4.4.0.0.0
1954, Landskrona (after section) a) C. T. Gogstad, '65.
The forward section of the tanker *Stolt Dagali* survived her collision with the Israeli liner *Shalom* on November 26, 1964, after the tanker broke in two. The stern section of the tanker C. T. Gogstad was salvaged after she went aground at Sundsvall December 1, 1964 and later broke in two. The two sections were towed into Gothenburg and joined by Eriksbergs M/V as a new tanker, which was named *Stolt Lady*. (See "Casualties," *Stolt Dagali*, in *Telescope*, May, 1966, pp. 122-23.)

Casualties

AMARYLLIS (Pa) Amaryllis SS Co. Ltd., Panama 1.0.0.0.0.0.0
1945, Vancouver 441.6 x 57.2 x 26.11 7201 gt
b) *Harmac Vancouver*, '48; a) *Cromwell Park*, '46. En route from Manchester to Baton Rouge, *AMARYLLIS* was driven ashore 1½ miles north of Palm Beach Inlet by hurricane "Betsy" on September 7, 1965. She was later abandoned as a constructive total loss.

BASIL II--see *Ever Prosperity*

BIRK (No) Skibs A/S Storli, Bergen. Tanker Pre-Seaway
1955, Haugesund 171.8 x 31.7 x 12.9 499 gt
En route from North Norway to Fredrikstad, *BIRK* went aground south of Maaloy on August 6, 1965. She was refloated on August 10 and towed to Bergen, where damage was found to be beyond economical repair. In temporary use as a storage hulk, *BIRK* was later sold for reconstruction.

CANNAREGIO--see *Tradeways II*

Capetan Vassilis (Le) Cia. Mar. Baltai Ltda., Beirut
1943, Superior 258.10 x 42.2 x 18 1790 gt
f) *Christina*, '61; e) *CAPETAN VASSILIS*, '59; Pre-Seaway
d) *HEILO*, '56; c) *SPIND*, '53; b) *Alexander T.*, '51; Pre-Seaway
a) *TULLY CROSBY*, '49. Lake-built
En route from Madras to Piraeus and Rotterdam, *Capetan Vassilis* sank in the Mediterranean Sea, off Crete, on April 16, 1965, after being abandoned by her crew when fire broke out in her cargo of sunflower seeds.

CARIBBEAN WAVE--see *Papadiamandis*

CASABLANCA (Ne) N. V. Zeereiderij Holland-Utrecht Pre-Seaway
1951, Schiedam, Tanker 223.1 x 32.1 x 11.4 499 gt
En route from Santander to St. Vincent, C. V., *CASABLANCA* went aground on December 20, 1965, on Santo Antao Island, Cape Verde Islands, and has been abandoned as a total loss.

CELIA B.--see *Sea Maid*

Ever Prosperity (Li) Reliance Marine Corp., Monrovia
1945, Portland, Oregon 441.6 x 57 x 27.8 7185 gt

c) *BASIL II*, '63; b) *Lyon*, '54; a) *Allen G. Collins*, '47. En route to New Caledonia, *Ever Prosperity* went aground on the Isie Reef, on the West Coast of New Caledonia, and was abandoned by her crew.

EVERBLOOM (Li) Prosperity Nav. Corp. Ltd., Monrovia 0.0.0.0.0.1.0
1942, Sunderland 442.8 x 56.6 x 27.5 7266 gt
a) *Vancouver City*, '63. *EVERBLOOM* was driven aground at Wakayama, September 10, 1965, by typhoon "Shirley." She was later sold to Japanese shipbreakers when damages were found to be beyond economical repair.

HEILO--see *Capetan Vassilis*

HOEGH CLIFF (No) Leif Hoegh & Co. A/S, Oslo (mgrs.) 0.0.0.0.0.0.1
1956, Hamburg 495.10 x 64.1 x 26.6 9194 gt
HOEGH CLIFF struck the breakwater at Kenosha while entering the harbor on October 14, 1965, and went aground. She was refloated on October 17, but sank for the second time when a lightering barge rammed the temporary patch in the cargo hold. Refloated again, she arrived at Chicago on October 28 for repairs. At the time of her collision, *HOEGH CLIFF* had been outward bound from Chicago for Bombay.

IRINI STEFANOU (Li) Stef Ship'g Corp., Monrovia 3.2.0.0.0.0.0
1943, New Orleans 422.8 x 57 x 27.8 7261 gt
Ex tanker. c) *Drury L. S.*, '58; b) *Aetna*, '56; a) *Eliza Jane Nicholson*, '54. En route from Vancouver to London, *IRINI STEFANOU* struck a reef on February 4, 1965, a mile west of San Benito Islands, Baja, California, and was beached. She was refloated on February 25, and later towed to Los Angeles for examination and probable repairs.

JALAKRISHNA (In) Scindia Steam Nav. Co. Ltd., Bombay 0.0.0.0.1.0.0
1960, Kobe 502.2 x 65.9 x 25.4 6888 gt
JALAKRISHNA sustained severe damage when hurricane "Betsy" struck New Orleans. She was further damaged in a collision with *Llanwern* during the storm.

LAKE ONTARIO (Sw) Trelleborgs Angfartygs A/B 0.0.1.1.0.1.0
1961, Landskrona 492.3 x 64.2 x 28 8155 gt
En route from Brisbane to Toronto, *LAKE ONTARIO* was disabled by an engine room fire on March 1, 1965, about 270 miles south of Noumea. She arrived at Brisbane, still on fire, in tow of the Dutch tug *Van Cloon* on March 8.

LIONNE (No) D/S A/S Ostlandet, Oslo (Alf. Mohn, mgr.) 0.0.2.2.1.0.0
1954, Oslo 326.7 x 46.4 x 19.10 2207 gt
En route from Caen to Montreal, *LIONNE* foundered on May 21, 1965, in a position 49.24 N. 28.57 W. after developing a leak in her boiler room.

MARGIT (De) Rederi A/S "Myren," Copenhagen 0.0.0.0.0.1.0
1953, Nakskov 437.11 x 57.9 x 25.9 4967 gt
En route from Vancouver to Calcutta, *MARGIT* was abandoned on February 12, 1965, in a position 17.47 N. 176.42 W. some 1000 miles southwest of Honolulu, after an explosion in her engine room followed by a fire. Three crew members were killed by the explosion.

She was burning fiercely when last sighted, and later went aground on Wotje Atoll in the Marshall Islands, where she was found on March 11, 1965, still burning.

MARIVIKI (Li) General Carriers S. A., Monrovia 0.1.0.0.0.0.0
1940, Port Glasgow 447.6 x 56.2 x 24.9 5110 gt
a) *Temple Inn*, '59.
En route from Madras to Constantza, *MARIVIKI* was beached in Colla Bay, near Mormugao, on July 22, 1965, after developing leaks. She later broke in two and became a total loss.

Milonga (Ho) Armadora Santa Catalina, Puerto Cortez
1944, Duluth 258.10 x 42.1 x 18.4 2066 gt
d) *Paprika*, '64; c) *Didi* '64; b) *Treviso*, '62;
a) **SAMUEL SAMUELS**, '48 Lake-built
En route from Sfax to Genoa, *Milonga* was abandoned by her crew in the Gulf of Orosei after developing engine trouble and taking a list off Eastern Sardinia (no date given). Three crew members were lost. *Milonga* later sank.

NORA--see "scrapping"

ORIENT MERCHANT (Gr) Orient Mid-East Lines Inc., 0.1.0.1.2.2.4
1944, Dundee 496.6 x 64.5 x 29.8 9894 gt
b) *Eemdyk*, '60; a) *Terborch*, '46
En route from Chicago to the Far East, on April 27, 1965, *ORIENT MERCHANT* went aground near Port Colborne and sustained extensive bottom damage. She was taken to Port Weller for repairs and later to Toronto pending a court settlement. She returned to service in September after being sold and renamed *ZAMBEZI* (see "Transfers"). (Note: *ZAMBEZI* rammed a fender at Iroquois Lock on September 18, 1965, delaying Seaway traffic for over twelve hours. This was the latest in a series of incidents which began for her when *ORIENT MERCHANT* was one of four salties trapped in the Lakes for the winter in 1964.)

ORIENT TRADER (Gr) Orient Mid-East Great Lakes Serv. 0.1.2.2.0.0.1
1945, Baltimore 455.2 x 62.1 x 28.6 7681 gt
ORIENT TRADER was extensively damaged by fire which broke out in her cargo of rubber on July 21, 1965, while she was docked in Toronto. She was towed out in the harbor and beached. Later she was sold to Marine Salvage Ltd., Port Colborne, and resold in 1966 for scrapping in Spain. (Note: Newsreel films showing the burning of *ORIENT TRADER* in Toronto harbor were used in the TV series, "On the Seaway," During her lay-up in Toronto, *ORIENT TRADER* was used for many scenes for the same TV series.)

PANAGATHOS (Li) Hellenic Shipping & Industries Co. 0.0.0.1.1.0.2
1943, Portland, Oregon 511.6 x 57 x 26.2 8520 gt
Lengthened 1955. d) *Pantokrator*, '61; c) *Artemidi*, '52; b) *St. Jan*, '51; a) *Ralph Barnes*, '47. En route from Rotterdam to Hamburg, *PANAGATHOS* went aground on Ameland Island On October 27, 1965, becoming a total loss.

Papdiamandis (Li) Crestview Shipping Co., Monrovia
1944, Portland, Oregon 595.6 x 75 x 32.1 14,130 gt
d) *CARIBBEAN WAVE*, '63; c) *Langeais*, '59; 1.4.1.0.0.0.0

b) *Ardeshir*, '54; a) *Rainier*, '48. En route from New Orleans to Hamburg, *Papdiamandis* went aground on December 22, 1965, at Faja Grande, Flores Island, Azores; after being abandoned by her crew, she broke up. (Note: *Papdiamandis* is a former tanker converted and lengthened in 1963.)

PONT AUDEMER--see *Vesper*

PRINS WILLEM V (i) (Ne) Maats. Zeetransport (Oranje) Pre-Seaway
1948, Hardinxveld 250.5 x 42.1 x 14.7 1567 gt
The sunken wreck of *PRINS WILLEM V* was sold at auction for \$85,000 to the Fireguard & General Fire Extinguisher Co. on July 28, 1965. She had sunk in Lake Michigan off Milwaukee on October 14, 1954, following a collision. The successful bidders are hoping to raise the ship to use as a floating showroom for their firefighting equipment.

PROTOSTATIS (Gr) Protostatis Cia. Nav. S.A., Piraeus 0.0.0.0.0.0.2
1943, Jacksonville 441.6 x 57 x 27.8 7259 gt
c) *Taxiarhis*, '60; b) *Erato*, '54; a) *John Philip Sousa*, '46
En route from Detroit to West Italy, *PROTOSTATIS* went aground in Lake Ontario on September 30, 1965, off Picton, Ont. She was refloated on October 12 and towed to Kingston for temporary repairs. While being towed to Montreal, *PROTOSTATIS* went aground again, this time on Wolfe Island in the St. Lawrence, and was later abandoned by her crew. A group of local men took possession of the stranded freighter, and later sold their "claim" to Ship Repairs & Supplies, of Toronto. During 1966, *PROTOSTATIS* was refloated and towed to Toronto, and later was sold for scrapping.

SAINT MARY--see *Sea Maid*

SAMUEL SAMUELS--see *Milonga*

Sea Maid (Li) Angelmar Shipping Co., Monrovia
1942, Hartlepool 327.11 x 46.6 x 20.10 2953 gt
f) **SAINT MARY**, '64; 0.0.0.0.1.0.0
e) *CELIA B.*, '63; d) *Elisabeth Jansen*, '59; c) 3.4.4.4.0.0.0
Yorkbrook, '54; b) *Stanway*, '51; a) *Empire Record*, '48. *Sea Maid* arrived in tow at Willemstad with engine damage on January 11, 1965. She was later found not worth repairing, and was sold for scrapping in 1966.

SPIND--see *Capetan Vassilis*

STELLA MARIS--see "Transfers"

TANAIS (Gr) Tritonia Shipping Inc., Piraeus 0.1.0.1.0.0.0
1959, Bruges 340.1 x 45.2 x 21 2848 gt
TANAIS went aground on reefs off the West Australian coast some 50 miles north of Fremantle on September 13, 1965, and was later abandoned by her crew. She was refloated on December 6, however, and was sold during 1966.

TOPDALSFJORD (No) Den Norske Amerikalinje A/S, Oslo 0.4.4.4.4.4.4
1959, Gothenburg 423.7 x 54.2 x 26.8 5840 gt
TOPDALSFJORD collided with *CEDARVILLE* (a) *A. F. HARVEY*, '57) in dense fog in the Straits of Mackinac two miles east of the Mackinac Bridge on May 7, 1965. *CEDARVILLE* sank with the loss of 13 lives.



PHOTOS FROM DONALD BAUT COLLECTION

Above, left: *Orient Trader*
(See Casualties)

Above, right: *Prins Willem V (i)*
(See Casualties)

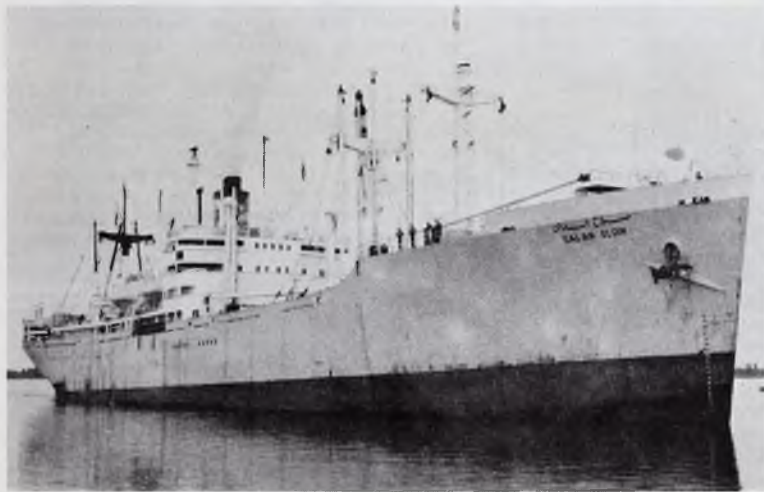
Lower left: *Facto*
(See Scrapping)

PHOTOGRAPHS BY GEORGE AYOUB

Above, left: *Carl Trautwein*
(See Rebuilding)

Lower left: *Salah Eldin*
(See Scrapping)

Lower right: *Everbloom*
(See Scrapping)



Tradeways II (Li) World Tradeways Shipping Ltd., Monrovia
 1943, Portland, Oregon 441.6 x 57 x 27.8 7184 gt
 c) *Amilla*, '65; b) *CANNAREGIO*, '64; a) *William H.* 0.0.1.0.0.0.0

Dall, '47. En route from Antwerp to Montreal. *Tradeways II* broke in two about 600 miles north of the Azores. The forepart of the ship sank quickly in a position 49.58 N. 25.40 W. The afterpart sank the following day in a position 50.24 N. 25.20 W. Eleven members of her crew were lost. (See also "Transfers," *Amilla*.)

TRANSATLANTIC (Ge) Poseidon Schiffahrt G.m.b.H. 0.0.4.4.4.0
 1954, Lubeck 406.11 x 54.3 x 26.1 3865 gt
 En route from Hamburg to Montreal on April 10, 1965. *TRANSATLANTIC* capsized in Lake St. Peter after a collision with the Dutch cargo liner *Hermes* followed by a fierce outbreak of fire aboard in which three crew members were lost. *TRANSATLANTIC* was refloated during August, 1965, and towed to Sorel. (Note: *TRANSATLANTIC* was still laid up at Sorel in 1966, awaiting disposal by her successful salvagers, Marine Industries Ltd. She has been replaced by a new *TRANSATLANTIC* in the Seaway trade.)

TULLY CROSBY--see *Capetan Vassilis*

Vesper (Pa) Pan Africa Atlantic Corp. Inc., Panama
 1945, Portland, Maine 441.6 x 57 x 27.9 7314 gt
 c) *Valfer*, '65; b) *PONT AUDEMER*, '64; a) *Harold H.* 0.1.0.0.0.0.0
Brown, '47. En route from Marseilles to Abidjan, *Vesper* was abandoned by her crew on December 13, 1965, following an engine room explosion in a position 37 N. 1.38 W. She caught fire, but was towed in to Carthagena on December 15. *Vesper* was later reported as beyond economical repair, and was sold for scrapping in 1966. (See also "Transfers," *Valfer*.)

WILTRADER (No) Sameiet Wiltrader, Oslo 0.0.2.0.0.0.0
 1949, Malmo 462.2 x 65.8 x 26.4 5670 gt
 a) *Igadi*, '60. *WILTRADER* was heavily damaged at New Orleans by Hurricane "Betsy."

Scrapping

AFRICAN BARON (Li) West Africa Nav. Ltd., Monrovia 0.0.0.1.0.0.0
 1942, Portland, Maine 441.6 x 57 x 26.10 7065 gt
 d) *Alcyone Faith*, '56; c) *Calygera*, '54; b) *Alcyone Fortune*, '51; a) *Ocean Stranger*, '48.

Sold to Japanese shipbreakers; arrived at Hirao on June 12, 1965.
AGIOS NICOLAOS III (Gr) Marcaminos Cia. Nav. S. A. 0.0.0.0.0.1.0
 1937, Hamburg 451.3 x 58.9 x 24 5573 gt
 a) *ALKAID*, '64 0.0.3.3.3.0.0

Sold to shipbreakers in Spain, arrived at Bilbao April 2, 1965.
Ago (De) A. P. Steffensen, Masnedund
 1921, Larvik 255 x 39.6 x 17.2 1680 gt
 b) *FACTO*, '61; a) *Octo* Pre-Seaway
 Sold to Paul Bergsoe & Co. for scrapping at Masnedo, Denmark

ALCOA PURITAN (US) U. S. Dept. of Commerce, New York 1.0.0.0.0.0.0
 1943, Wilmington, Calif. 417.9 x 60 x 28.5 6749 gt
 Sold for \$54,210 on January 22, 1965, to Pinto Islands Metals Co. of Mobile, Alabama, for scrapping.

ALKAID--see *AGIOS NICOLAOS III*

ARNFINN JARL--see *Biston*

ATHELSTULTAN (Br) Athel Line Ltd., Liverpool. Tanker 0.1.0.0.0.0.0
 1951, Middlesbrough 493.6 x 63.7 x 28.2 9149 gt
 Sold to shipbreakers in Japan; arrived at Onomichi Oct. 25, 1964.

BELLATRIX--see *Orion*

Biston (No) Kr. E. Samuelsen's Rederi A S, Oslo
 1921, Fredrikstad 240.4 x 36.1 x 15.2 1193 gt
 a) *ARNFINN JARL*, '54 Pre-Seaway

Sold to shipbreakers in Sweden during March, 1965

Captain John (Le) Capetan San Juan Nav.

1924, Copenhagen 381.3 x 53.8 x 23.3 4436 gt
 b) *GARDHAV*, '62; a) *Vinland*, '54 3.0.0.0.0.0.0

Captain John has been laid up at Bombay while an ownership dispute continued after *GARDHAV* was sold by Einar M. Gaard A S and Sigurd Haavik A/S (Norway) to Lebanese interests in 1962. She was later reported sold to Greek owners and renamed *Zilly*, but transfer evidently was not completed. A later report in 1965 is that she is to be scrapped. (Note: *Captain John* is not listed in *Lloyd's Register*, so the name was probably not officially recorded as such and *GARDHAV* is the final listing.)

CHRIS (Li) Trans World SS Co. Ltd., Monrovia 0.0.0.1.0.0.0
 1943, New Orleans 441.6 x 57 x 27.8 7258 gt
 Tanker, converted 1949. b) *Paul Revere*, '54; a) *Thomas F. Cunningham*, '49. Sold to shipbreakers in Japan, arrived at Hirao on November 16, 1965.

Chrysopolis (Li) Astrosuerte Cia. Nav. S. A., Monrovia
 1945, Vancouver 441.6 x 57.2 x 27.8 7292 gt
 b) *ZINNIA*, '64; a) *Portland Bill*, '51 1.2.0.1.2.0.0
 Sold to shipbreakers, arrived at Kaohsiung in Formosa, May 18, 1965. (Note: *Portland Bill* was commissioned as an armament maintenance ship for war service, and was converted in 1951.)

CIS BROVIG (No) Partrederiet Brovigtank, Farsund 2.2.0.0.0.2.1
 1948, Port Glasgow. Tanker 505.10 x 62.2 x 28.3 8996 gt
 Sold to shipbreakers in Spain, arrived at Castellon Aug. 19, 1965.

DINO--see *Imera*

ELENA SECONDA (It) Cia. Italiana Transoceanica 0.0.0.0.1.0.0
 1943, Richmond, Calif. 441.6 x 57 x 27.8 7152 gt
 b) *Portoria*, '61; a) *Frederic A. Eilers*, '55
 Sold to shipbreakers in Italy; arrived at Spezia on July 9, 1964.

EVERBLOOM--see "Casualties"

FACTO--see *Ago*

FALAISE (Fr) French Government, Dunkerque 0.0.2.1.0.0.0
 1944, Richmond, Calif. 442.11 x 57 x 27.9 7257 gt
 a) *Carl G. Barth*, '47

Sold to shipbreakers at Ferrol, Spain.

FINLAND (Sw) A/B Svenska Orient Linien, Gothenburg 0.0.0.0.0.2.0
 1946, Gothenburg 462.10 x 58.8 x 23.11 4446 gt
 a) *Trolleholm*, '62
 Sold to Van Heyghen Freres, Belgium. Arrived in tow at Bruges on April 12, 1965.

GARDHAV--see *Captain John*

GIANFRANCO (It) "Insulare" Cia. Sicula di Armemento 0.0.1.0.0.0.0
 1944, Sunderland 446.6 x 56.4 x 26.9 6971 gt
 c) *Atje Ray S.*, '57; b) *Lord Lloyd George*, '55; a) *Empire Stuart*, '47. Sold to shipbreakers at Vado; probably scrapped during 1964.

GUSTAV HEINRICH WEITERT--see *Maya*

Imera (It) "Sicilarma" Soc. di Nav. p. Azioni, Palermo
 1944, Panama City, Florida 441.6 x 57 x 27.8 7167 gt
 b) *DINO*, '63; a) *John W. Griffiths*, '47 0.1.0.0.0.0.0
 Sold to shipbreakers in Italy; arrived at Spezia on May 3, 1965.

LILLGUNVOR--see *Rehhorst*

Maya (Ge) Atlantic-Rhederei F. & W. Joch, Hamburg, mgrs.
 1936, Rendsburg, Tanker. 233.6 x 33 x 14.2 1153 gt
 Lengthened, 1953. e) *Maxburg*, '60; d) *GUSTAV HEIN- Pre-Seaway*
REICH WEITERT, '56; c) *Frisia*, '53; d) *Daxhound*, '38; a) *Cornelia S.*, '37. Sold to West German shipbreakers. Arrived at Hamburg on May 30, 1965, but was still laid up towards the end of 1965.

Mercantile Victory (Li) Salvador Investment Co. Inc., Monrovia
 1944, Los Angeles 455.2 x 62.3 x 28.6 8190 gt
 c) *SALAH ELDIN*, '63; b) *Mohammed Ali El Kebir*, '60; 0.0.0.2.1.0.0
 a) *Atchinson Victory*, '47. Sold to shipbreakers in Spain; arrived at Castellon on May 10, 1965.

NEREUS (Gr) Nereus S. N. Co. Ltd., Syra 0.2.0.1.0.0.0
 1937, Port Glasgow 447 x 56.2 x 25 5205 gt
 Sold to shipbreakers in Japan; arrived at Osaka, October 9, 1964.

NIAGARA (US) Sea Transport Inc., New York 0.0.0.0.0.0.0
 1945, Portland, Oregon 564.6 x 68.3 x 29.7 11,564 gt
 f) *TRANSWARREN*, '62; e) *Skopelos*, '60; d) *Andros* 0.3.0.0.0.0.0
Neptune, '60; c) *Aquitanius*, '56; b) *Esso Cardiff*, '55; a) *Halls of Montezuma*, '47. Sold to shipbreakers in Spain; arrived in tow at Castellon October 29, 1965. (Note: *NIAGARA* is a former tanker converted and lengthened in 1955.)

NORA (No) A S Marina, Bergen (S. L. Paulsen, mgr.) 0. . . . ? . . 0
 1950, Port Glasgow, Tanker 505.6 x 62.2 x 28.3 8998 gt
 a) *Isonn*, '60. Sold to shipbreakers in Spain; arrived in tow at Santander early in June, 1965. (Note: Number of Seaway trips is not known other than one trip made in 1963. *NORA* was extensively damaged by fire following a collision in the English Channel on March 28, 1965.)

Orion (Pa) Mansamar S. A., Panama
 1934, Port Glasgow 362.4 x 57.1 x 22.7 4565 gt
 d) *Vincenzo Jacomino*, '65; c) *BELLATRIX*, '61; 1.1.0.0.0.0.0
 b) *Lord Byron*, '50; a) *Arcgow*, '36. Sold to Yugoslavian shipbreakers, Brodospas; arrived at Split, December 16, 1965. (See also "*Transfers*," *Vincenzo Jacomino*.)

PETRA DAN--see *Watford Trader*

PUNTA MESCO (It) "Unione" Soc. per Azioni, Genoa 0.1.3.1.0.3.0
 1943, Richmond, Calif. 441.6 x 57 x 27.8 7156 gt
 a) *William S. Clark*, '47. Sold to shipbreakers in Italy; arrived at Spezia on March 24, 1965.

Rehhorst (Ge) Johannes Ick, Hamburg
 1930, Stavanger 254.7 x 37 x 15.2 1299 gt
 b) *LILLGUNVOR*, '51; a) *Vardvik*, '35 Pre-Seaway
 Sold to the Wasser und Travewerft, for scrapping; arrived at Lubeck on October 2, 1965.

SALAH ELDIN--see *Mercantile Victory*

SINCERE TRADER (NC) Sincere Nav. Corp., Keelung 0.0.1.0.0.0.0
 1942, Portland, Maine 441.6 x 57 x 26.10 7130 gt
 c) *Madonna*, '61; b) *Clan Macbeth*, '59; a) *Ocean Glory*, '48.
 Sold to Formosan shipbreakers at Kaohsiung, and was still in the process of being scrapped in December, 1964.

STELLA (It) Cia. de Nav. Giuseppe Mazzini, Genoa 0.0.0.3.2.0.0
 1943, North Vancouver 441.6 x 57.2 x 27.8 6977 gt
 c) *Shahin*, '53; b) *Marchdale*, '48; a) *Dundurn Park*, '46.
 Sold to shipbreakers in Italy; arrived at Spezia August 12, 1965.

TRANSWARREN--see *NIAGARA*

Watford Trader (Li) Westwaters Shipping Inc., Monrovia. Tanker
 1952, Gothenburg 551.2 x 64.4 x 29.10 10,843 gt
 a) *PETRA DAN*, '64 1.0.0.0.0.0.0
 Sold to shipbreakers in Spain; arrived in tow at Valencia on April 26, 1965.

ZINNIA--see *Chrysopolis*

Corrections to "Seaway Salties 4 (1964),
 Telescope for May, 1966
 Compiled by George Ayoub

- p. 102 *Dalhem* (Sw) 429x58 1957
Divina (No) 258x38 1951
 There is no *Divina* built 1962 in the shipping registers. This *Divina* is a regular in the Seaway, however.
- Donegal* (Br) Avenue Shipping Co. 460x59 1957
- p. 103 *Fernpoint* (No) 1958 (not 1939)
- p. 106 *Lealott* (Ge) 348x50 1958 (not 1956)
 Trips made in former years should be listed as made by *Volumnia*, which was renamed *Lealott* (ii) in 1963. Trips made in 1960-63 inclusive were by former *Lealott*, later renamed in 1963 b) *Hiddensee*.
- Libreville* (No) 1956
- p. 107 *Salvina* (Br) 1963
- p. 118 *Wendover*--transfer (charter) and renaming was in 1965, not in 1964, and therefore should not have been listed.

GREAT LAKES AND SEAWAY NEWS

Editor, Frederic E. Weber

8326 Greenlawn, Detroit, Mich. 48204

Seaway News Editor, George Ayoub

Correspondents:

George Ayoub, Ottawa Edwin Sprengeler, Milwaukee

John Derler, Ludington Otto Streck, Detroit

Barry Gillham, Toronto Dan M. Weber, Toledo

January 23...Forty-two members of the 90th Congress have urged the Johnson administration to prepare legislation changing the financial structure of the St. Lawrence Seaway, making it unnecessary to increase tolls.

...The cost of keeping the St. Lawrence River open for winter navigation as far as Montreal was estimated at \$100,000,000, by Transport Minister Pickersgill.

January 24...One of the two lifeboats on the stern of the MORRELL is still in its place and covered divers reported. The other was apparently launched when she broke in half and sank. Its davits are cranked out, and the boat is gone. The stern section, 200 to 250 feet long, lies in about 200 feet of water. The forward section has not been found. The divers civilians employed for the Coast Guard investigation are working off the cutter BRAMBLE, and are photographing parts of the stern section. Silt deposits are making this difficult.

...U.S. District Court granted an injunction against further action in suits against the owners of the MORRELL until a decision is handed down on the question of limiting the liability of the boat's owners.

January 25...Pickands Mather & Co., operator of the Interlake Fleet, announces that it is discussing purchase of the 710-foot bulk carrier SHENANGO II from Shenango Furnace Co., of Pittsburgh.

...Interlake has applied to the Maritime Administration for permission to sell one of its vessels, the 524-foot HARRY W. CROFT (a. FRED G. HARTWELL), to Canadian interests. The application has not yet been acted upon.

...Ferry service between Quebec City and Levis was stalled for over twelve hours when the two ferries became stuck in heavy ice jams. They were freed with the assistance of three ice-breakers.

January 26...Two Cleveland men plan to start hydrofoil boat commuter, excursion and charter service on Lake Erie this summer. The Cleveland-based hydrofoil initially will carry passengers to and from Cedar Point and provide tours to Pelee and other Lake Erie islands.

GREAT LAKES AND SEAWAY NEWS

January 27...Plans for a new Canadian ice-breaking tender for Great Lakes service to replace GRENVILLE were announced by the D.O.T. The new vessel, 234-feet in length, will be fitted with a flight deck and telescopic hanger for a helicopter.

...The possibilities of developing a port at Varennes, 15-miles downstream from Montreal, on the south shore, is under consideration.

...U.S. District Court in Cleveland set a deadline of May 1st for the filing of claims in connection with the sinking of the MORRELL.

...A special channel for pleasure craft visiting Expo '67 in the Port of Montreal will be marked to avoid danger to shipping. About 10,000 pleasure craft are expected during the six month period of the World Fair.



Tug FRANCES A. SMALL at Drummond Island taking on fuel in November of 1966. (Photo by Capt. Frank Becker).

February 2...American Ship Building Company, Lorain, has won a contract for repowering and automating the self-unloader MYRON C. TAYLOR of the Bradley Fleet.

...William H. Jory, Am. Ship President, said they are negotiating for several lengthening and conversion contracts on Great Lakes vessels. Lengthening would permit ore boats to make better use of the new Second Lock at the Soo, slated to be ready in June 1968.

...The Wilson Fleet is now a division of Ingalls Shipbuilding Corp., a wholly owned subsidiary of Litton Industries.

February 3...The coasters CHARNY, FORT LAUZON, SILLERY, and J. EDOUARD SIMARD and two salties, PRINS MAURITIS (DUTCH) and OLYENOGORSK (USSR) were set free by the icebreakers N.B. McLEAN, ERNEST LAPOINTE, and SAUREL, after becoming trapped in heavy ice jams in the St. Lawrence River between Lanoraie and Lake St. Peter.

...The Canadian Dept. of Transport has asked for bids on a 234-foot icebreaker for Great Lakes service.

...The Treasury Dept. has announced that on February 24 it will transfer to the Coast Guard a number of maritime functions now performed by the Customs Bureau. These will include documentation of vessels, preparing merchant vessel registers, registration of Stack insignia, and port security.

February 6...Petroleum product shipments over the Great Lakes in 1966 in U.S. and Canadian tankers set a four-year mark of 12,980,080 net tons. Lake Carriers Association reported the 1966 shipments were equivalent to 89,312,932 barrels, up 16.23 per cent from 1965.

February 7...A record 49.2 million tons of cargo moved through the St. Lawrence Seaway in 1966, a 13.5% increase over 1965.

...The Canadian S.I.U. claim they will demand a 17% increase in pay and a 40-hour work week.

February 10...A Midwestern Governors Conference to discuss the St. Lawrence Seaway will be held in Toledo, Ohio, on Feb. 27.

February 11...The coaster CABOT, which capsized at her dock in Montreal, December 16, was towed to Sorel by three tugs for repairs. Refloated two weeks ago, she was temporarily repaired to make her seaworthy for the eight hour trip. The towing operation was the first in the St. Lawrence River history to be attempted during the winter season.

February 13...Damage to the new ferry AMBROSE SHEA, which caught fire while under construction at Sorel, by Marine Industries, Ltd., was estimated at four million dollars in a parliamentary report.

GREAT LAKES AND SEAWAY NEWS

February 14...A salvage crew, Malcolm Marine Salvage and Construction Company, of Marine City, Michigan, have been working since the middle of January on removing almost 1,000 steel coils from the hulk of the German freighter NORDMEER, which ran hard aground nearly three weeks ago in Lake Huron. So far, they have removed 16 coils, weighing 8 to 12 tons each. These coils are being sent to Glenside Steel Co., Philadelphia, the company that brought salvage rights to the cargo from the underwriters. The NORDMEER had been thoroughly stripped by amateur salvagers by the time Malcolm reached the scene.

February 15...Port Colborne, Ont., at the eastern end of Lake Erie, was flooded early today when the big blow that swept across the Lake pushed water levels up seven feet. Extensive damage was reported at a marina, but lake boats in the area were not affected.

...Two lakers at Erie, Pa., the POWELL STACKHOUSE and the L.C. HANNA, dragged their anchors 1,800 feet across Presque Isle Bay, but no damage was reported.

...Lake Erie reached a high of 9.3 feet above low water datum at Buffalo, N.Y., for a few hours, the highest recorded since a heavy storm in November 1955, the Corps of Engineers reports.

February 17...Japanese 'K' Line will increase its Far-East-Great Lakes service in 1967 with twenty-two sailings scheduled during the navigation season.

February 20...Litton Industries, Inc., paid \$7.3 million for the Great Lakes fleet and business of Wilson Marine Transit Co. ...Capt. Alfred B. Weber of Ashtabula, Ohio, has ended a 44-year career with the Pittsburgh Fleet. Last season he was master of the ARTHUR M. ANDERSON.

February 21...Ellerman's Wilson will abandon its Canadian East Coast and Great Lakes Services this year due to rising costs. The Cairn Line will take over this service.

...ALGOSTEEL (a. THOMAS BARLUM) has been sold to Strathearne Terminals for scrap as her hull did not merit repair.

February 22...Columbia Transportation's ship ROBERT C. NORTON (a. LEONARD B. MILLER, b. CHARLES W. GALLOWAY) is being re-boilered and converted from coal to oil at an expected cost of \$600,000.

...The Danish freighter HELGA DAN, which went aground in the St. Lawrence River near Varennes, was released and proceeded on her way to Baie Comeau.

February 24...A \$3,000 fire which was confined to the galley and living quarters at the stern of the HOWARD M. HANNA, JR., took the life of its shipkeeper. She has been laid up for the last three years at Oregon, Ohio.

February 25...Floating ice packs in Montreal Harbor caused two Danish freighters RIMJA DAN and ANITA DAN to snap their mooring lines and drift downstream a short distance.

...The Soviet freighter INDIGIRKA which grounded in Lake St. Peter, by the force of ice packs, February 21, was released with the assistance of two other Soviet freighters, ANGARGES and VAIGACHE. The three ships proceeded to Montreal.

February 27...The former Canadian Navy frigate INCH ARRAN which went aground in Kingston Harbor and became icebound is creating a problem for D.O.T. and local officials. Now owned by the Kingston Marine Association, the retired warship was planned to be used as a tourist attraction but efforts to berth her have been unsuccessful due to her deep draught.

February 28...The appointment of Roger E. Belanger as director for the Eastern Region was announced by the St. Lawrence Seaway Authority. Mr. Belanger joined the Authority in 1954 and handled personnel administration during the building of the Seaway.



CSL's COLLINGWOOD and RENVOYLE at the Kingston Elevator, Feb. 18, 1967 (PHTO by Barry Gilham)

GREAT LAKES AND SEAWAY NEWS

March 1...Ford's ROBERT S. McNAMARA (a. STADACONA, b. W.H. McGEAN) sailed from Dearborn, Michigan, resuming the coal run from Toledo.

...Capt. John Rankin became U. S. Steel's Pittsburg Fleet marine superintendent. Capt. Rankin succeeds Capt. Thomas F. Hardbottle, who has retired.

March 2...Pickands Mather & Co. has purchased the 710-foot SHENANGO II from Shenango Furnace Co. and will rename her CHARLES M. BEEGHLY.

...With the Coast Guard's TUPELO breaking ice ahead of her the ROBERT S. McNAMARA made her way into the coal dock at Toledo. Joining her on the return trip to Detroit will be the BEN W. CALVIN (a. WILLIAM C. AGNEW, b. GEORGE F. RAND), who has been in drydock in Toledo for her five-year inspection.

March 4...An icebreaker came to the rescue of the railroad ferry CHIEF WAWATAM which has been stuck on ice piles in the Straits of Mackinac for eight hours.

March 7...The Maritime Subsidy Board has authorized Moore-McCormack Lines and Farrell Lines to serve the Great Lakes on a permanent basis as part of their regular subsidized service. Previously only American Export Isbrandtsen Lines has been serving the Great Lakes on a permanent basis.

March 8...Lake Carriers' Association and nine steamship companies filed a formal complaint with the Interstate Commerce Commission charging eight railroads with filing artificially low rates on coal transportation to eliminate waterborne competition in the coal trade.

March 10...Gartland's 524-foot SULLIVAN BROTHERS (a. JOSEPH S. WOOD), now in drydock at Superior, Wisconsin, will be patched up enough to make her watertight so she can be floated out to a berth when the ice breaks this spring. She grounded late last year in the upper St. Mary's River and proceeded to Superior under her own power, but examination showed more than 100 plates damaged. Full cost of repairs is about 400,000 dollars and no decision has been made on repairing or selling her.

March 11...The Canadian Algoma Fleet will lay the keel for a new self-unloader at Collingwood, Ont. shipyard in July.

March 13...The Canadian Government announces a \$20 per lock toll in the Welland Canal this year. There will be no tolls on the rest of the Seaway.



GOUDREAU (a.MICHIGAN) taken at Welland Jct. Mon. Oct. 24,1966
(Photo by W.R.Wilson)

March 14...Interlake Steamship has chartered the WILLIAM P. SNYDER, JR. to the Shenango Furnace Co. for the 1967 season. ...Boat watching in Cleveland, Ohio, got off to an early start this season as a Bell A.C.V. (air cushion vehicle) went skinning easily over broken ice and small windrows in the harbor. The Canadians are interested in it. It could operate from the Canadian mainland to Pelle Island over the ice in the winter. Speed is about sixty-five miles per hour.

March 15...Labrador Steamship Co., a Canadian subsidiary of Pickands Mather, has acquired the DON de DIEU from the Papanchristidis fleet, and renamed her V.W. SCULLY in honor of the chairman of Steel Co. of Canada, Ltd. (Stelco).

...The D.O.T. announced icebreaking operations will start today on the Seaway section between Lake St. Francis below Cornwall to Lake Ontario.

...Lauritzen Lines, Copenhagen, has sold the freighter ANITA DAN, one of the early arrivals in the Port of Montreal in 1967, to the British Ministry of Defense. She will be converted for use as an ice patrol ship in the South Atlantic and Antarctic.

GREAT LAKES AND SEAWAY NEWS

March 16...The Huron Cement ship, S.T. CRAPO, left Detroit for Alpena, Michigan. This is the beginning of the 1967 interlake navigation season.

March 17...Retired Captain Gustaf E. Anderson, 96, died in Milwaukee, Wisconsin. He had sailed the lakes for forty-three years, working for the Mitchell Steamship Co. and Interlake Steamship Co. before he retired in 1935.

March 19...Quebec and Ontario Transportation Co. announced the purchase of the GRIFFON and TECUMSEH from Beaconsfield Steamships, Ltd., Montreal. No new names given as yet.

...In Toledo, Ohio, six sand barges have been padlocked by the U.S. Marshal's office as a result of complaints filed by three Toledo men. The barges are the R.W. HOLST, the SANDCRAFT, the LI'LA ROCK, the IRONWOOD, the ALGONAC, and the WESTWIND. All are tied up at the Kuhlman Builders Supply & Brick Co. dock on Main St.

March 20...MANCHESTER PROGRESSES, of the Manchester Liners, arrives in Montreal on its maiden voyage.

...The Coast Guard cutter TUPELO is expected to arrive in Fairport Harbor from Toledo. She will help free the ice bound coal carrier HURON. The cutter KAW developed engine trouble twice last week while on the same mission.

...Huron Cement's S.T. CRAPO opened the Port of Toledo's lake freighter season officially when she arrived from Alpena, Michigan, with a load of cement.

March 22...An option to buy the laidup passenger-cargo steamer KEEWATIN has been taken by R. R. Perterson of Saugatuck, Michigan. A Port Colborne, Ont., salvage firm bought the KEEWATIN from the C.P.R. last year. Perterson must not only exercise his option but make successful arrangements with U.S. Customs to import the ship. She would not be permitted to sail in U.S. coastal trade. He intends to use the sixty year old ship as a museum at Saugatuck on Lake Michigan.

March 24...The Pittsburgh Fleet is fitting out the WILLIAM B. SCHILLER this year to replace the GEORGE A. SLOAN, which is being converted to a self-unloader for the Bradley Fleet.

March 27...At 12:26 p.m., Capt. James M. Burke brought the Huron Cement boat J.A.W. IGLEHART (a. PAN AMOCO, b. AMOCO, c. H.R. SCHEMM) into Cleveland, Ohio, to open that City's shipping season. The Coast Guard cutters, ACACIA, TUPELO, and KAW provided escort and icebreaking assistance on various legs of the trip.

...The Canadian Coast Guard tender SIMCOE damaged her propeller while attempting to clear a channel through the ice from Brockville to Kingston, and will be out of operation for a few days for repairs.

March 28...The icebreaker JOHN A. MAC DONALD was still attempting to release the D.O.T. ferry WILLIAM CARSON which became ice bound in the Gulf of St. Lawrence near the entrance on March 25.

...The Soo announced that the Locks handled 263 salties during the 1966 sailing season.

March 29...Milwaukee will have a new Coast Guard Station and a 860-foot pier at the east end of Jones Island. Woerfel Corp. has been awarded the \$1,021,177 contract from the Coast Guard to do the work.

March 30...At 1 p.m., the self-unloader JOHN G. MUNSON passed under the Mackinac Bridge. She is following the U.S.C.G. icebreaker MACKINAW (a. MANITOWOC). The MUNSON is headed to Gary, Indiana, from Calcite, Michigan.

...Litton Industries, Inc. has obtained a six-month option on property in Erie, Pa., presumably for shipyard purposes.



HERON BAY (a. J. PIERPONT MORGAN) at Iroquois, Ont. June 19, 1966.
(Photo by Geo. Ayoub)

MISCELLANEOUS

...The tug COLINETTE (formerly LAC OTTAWA) is being re-engined by Waterman Services, Toronto.

August 7...The former St. Lawrence Ferry Co. ferry ARTHUR CARDIN arrived in Quebec's Louise Basin to be converted to a floating theater for her new owners, the "L'Escale" Theater Co. Beginning next spring, she will tour St. Lawrence ports by summer and will be berthed in Montreal by winter, putting on plays by L'Escale Inc., a new French-language theatrical company, under her new name of L'ESCALE.

The former 162-foot R.C.N. BANGER class minesweeper H.M.C.S. BROCKVILLE has been bought by the Maisonneuve Maritime Transport Co., Ltd., and converted into the excursion ship CYGNE BLANC (French for White Swan) to operate out of Montreal Harbor beginning in 1967. The solid brass wheelhouse and teak decks are to be retained and restaurant facilities with four bars on two decks are being added, as well as a snack bar. She is to operate on the rivers and lakes around Montreal Island, the first such type since the old ISLAND KING II burned in 1960. Meanwhile the former Clarke ferry RIVIERE DU LOUP entered service last year in Montreal harbor excursion trade for Navigation Voyageur Inc.

...ROBERT J. PAISLEY (a. CHRISTOPHER, b. THOMAS BRITT, c. J.E. SAVAGE) has been returned to Marine Salvage and will probably be scrapped. She is now at a Lake Erie port.



THE GREAT LAKES MARITIME INSTITUTE, INC., promotes interest in the Great Lakes of North America; preserves memorabilia, relics, records and pictures related to these lakes; encourages building of scale models of lake ships; and furthers programs of **DOSSIN GREAT LAKES MUSEUM**, repository of Institute holdings. The Institute was organized in 1952 as the Great Lakes Model Shipbuilders' Guild, with efforts of the late Capt. Joseph E. Johnston. It is incorporated as an organization for no profit under the laws of the State of Michigan. Donations to the Institute have been ruled deductible by the Internal Revenue Service. No Institute member receives any remuneration for services rendered.

TELESCOPE, the Institute's monthly journal, covers Great Lakes topics. Its editors welcome opportunity to review manuscripts for publication, sent care of "Telescope, Great Lakes Maritime Institute, Dossin Great Lakes Museum, Belle Isle, Detroit, Mich. 48207. The editors cannot be responsible for authors' statements.

Other communication with the Institute should go to the Coordinating Director, by mail to the address above, or telephone at LO 7-7441.

INSTITUTE MEMBERSHIP is available by calendar year in these forms:
 Regular Membership \$ 5 annually
 Sustaining Membership \$10 annually
 Life Membership \$ 100

Subscription to Telescope is included in membership rights in the Institute. Single copies of Telescope are priced at forty-five cents each. The Institute is supported in part by the Detroit Historical Society.



1965

GREAT LAKES MARITIME INSTITUTE

President, Donald Richards
Honorary Pres., Rev. Edward J. Dowling, S. J.
Vice-president, Robert Radunz
Secretary, William M. Worden
Coordinating Director, Robert E. Lee
Treasurer, James C. McDonald

Directors:

| | |
|----------------------|---------------------------|
| Edward E. Andrews | James C. McDonald |
| Donald V. Baut | Emory A. Massman, Jr. |
| Henry D. Brown | Robert Radunz |
| Lloyd Chapman | Donald Richards |
| Kenneth L. Fairbanks | Otto Streck |
| William A. Hoey | Rev. Peter Van der Linden |
| C. Patrick Labadie | Frederic E. Weber |
| William Labonville | William M. Worden |
| Robert E. Lee | |

TELESCOPE

Editor, Donald Richards
Fleet List Editor, Rev. Edward J. Dowling, S. J.
Picture Page Editor, Emory A. Massman, Jr.
Blueprint Editor, C. Patrick Labadie
Associate Editors
 William A. Hoey Robert E. Lee Otto Streck

GREAT LAKES AND SEAWAY NEWS

Editor, Frederic E. Weber,
 8326 Greenlawn, Detroit, Michigan 48204
Seaway News Editor, George Ayoub
Correspondents:
 George Ayoub Edwin Sprengeler
 Barry Gillham Otto Streck
 Dan M. Weber

Printed in the United States of America by
 Macomb Printing Specialties, Mt. Clemens, Michigan