

The Great Lakes

RED BOOK

1940

A list of over 1500 Vessels of the Great Lakes, including the names of their Owners, Captains and Engineers, and of Ship-building and Repair Yards.

Compliments of

Society for Savings

in the City of Cleveland

PUBLIC INQUIRY

IN THESE GREAT LAKES PORTS

We Offer You Complete G-E Service

- **BUFFALO**
Sales Office: 1 West Genessee St.; Phone Cleveland 2800 • Service Shop: 318 Urban St.; Phone Filmore 5849
- **CHICAGO**
Sales Office: 230 S. Clark St.; Phone DEarbom 2442 • Service Shop: 509 East Illinois St.; Phone SUpperior 7689
- **CLEVELAND**
Sales Office: 4966 Woodland Ave.; Phone ENdicott 4464 • Service Shop: 4966 Woodland Ave.; Phone ENdicott 4464
- **DETROIT**
Sales Office: 700 Antoinette St.; Phone TRinity 22600 • Service Shop: 5950 Third Ave.; Phone TRinity 22600
- **MILWAUKEE**
Sales Office: 940 West St. Paul Ave.; Phone MArquette 5000 • Service Shop: 940 West St. Paul Ave.; Phone MArquette 5000

*Warehouse stocks maintained in all the above
Great Lakes Ports.*

- **TOLEDO**
Sales Office: 420 Madison Ave.; Phone MAin 6291

BUILDERS OF MARINE EQUIPMENT SINCE 1892

GENERAL  ELECTRIC
Since 1892

SCHENECTADY, N. Y.



**SOCIETY for SAVINGS
BANK**

**A SAILOR'S
STRONGEST FRIEND
IS
CASH IN THE BANK**

and you can build it with
small mail deposits at
this 90-year-old Savings
Bank.



Resources over \$100,000,000

Incorporated 1873
Society for Savings
in the City of Cleveland

NACO

ANCHOR CHAIN

And

JOINING LINKS

Assure Extreme

Strength And
Durability



NATIONAL MALLEABLE AND STEEL CASTINGS COMPANY

General Offices
Cleveland, Ohio

VESSELS OF THE GREAT LAKES

with the name of

OWNER, CAPTAIN AND
ENGINEER

+

Complete Port Directory
Complete Shipyard Directory
Dimensions and Capacity of
Bulk Freighters

+

1940
SEASON

+

Published by
THE PENTON PUBLISHING CO.
CLEVELAND

No more scale, corrosion, or carryover
if you let me treat your boiler water!

Dearborn offers you the simplest and most positive method of water treatment for marine service. It provides full protection against troubles due to scale, corrosion, and carryover. Write, Dearborn Chemical Company, Marine Dept., 310 S. Michigan Ave., Chicago.



Dearborn

TRADE MARK REGISTERED

SCIENTIFIC WATER TREATMENT

Protect Your Steelwork

NO OX'ID IRON RUST
TRADE MARK

The Original Rust Preventive

Prevents corrosion. Consistencies to meet every specific requirement.

HOW TO USE THE DIRECTORY

+

■ Beginning on page 45 is listed more than 1500 vessels available for service on the Great Lakes for the season of 1940. In addition to management, chief operating personnel is given where possible. In the case of bulk freighters technical data, such as keel length, beam, depth, distance between hatches, and carrying capacity at 20-ft. draft are given.

■ To find the name of the owner, captain or engineer, refer to the name of the vessel in the alphabetical index. Each listing in this index carries a number which refers to the fleet to which the vessel belongs and is found preceding the owner's name in the fleet listing.

■ On page 135 a directory of shipbuilding and ship repair yards is given, listed alphabetically, with the names of officials and pertinent data.

■ On page 152 a Where-To-Buy directory will be found, conveniently listed under each port.

+

Copyright, 1940, The Penton Publishing Co.
Cleveland, Ohio

THE ROOT & McBRIDE CO.

We make a study of your special requirements and know how to provide what you need in the following lines.

For Officers, Passengers and Crews

Bleached Linen Damasks for Table Cloths	Curtain Materials
Bacco Damasks and Napkins	Dresser Scarfs
Colored Damasks for Table Cloths	Rugs
Cotton, Part Wool and All Wool Blankets	Carpets
White and Colored Sheets	Linoleums
Mosquito Netting	Cocoa Mats
Face Towels	Wash Cloths
Bath Towels	Oil Cloth
Roller Towels	Combs
Dish Towels	Soaps
Bed Spreads	Brushes
Pillow Cases	Cook's Caps
Pillows	Aprons
Mattresses and Springs	
Ducks and Canvas	
Steamer Rugs	
Comfortables	
Cheese Cloth	
Draperies	
Laundry Bags—made from duck	

We are always prepared to submit samples promptly.

Phone or write us when you are ready.

Telephone MAin 4405

THE ROOT & McBRIDE CO.

Wholesale Distributors

Contract Dept.

1250 West 6th St. Cleveland, Ohio

INDEX TO LAKE FLEET

A		Vessel	Fleet No.
		Alligator Quail ..	33
		Alligator Serpent ..	33
		Alpena	92
		Alpena	254
		Amaranth	242
		Amazon	110
		America	10
		America	12
		America	92
		American	6
		American	143
		Amership	6
		Anarco	199
		Angeline	47
		Ann Arbor No. 3..	7
		Ann Arbor No. 5..	7
		Ann Arbor No. 6..	7
		Ann Arbor No. 7..	7
		Anticosti	30
		Antietam	242
		Arcturus	188
		Argenteuil	32
		Arizona	92
		Arkansas	92
		Arnold, Fanny	27
		Ashcroft	30
		Ashley, J. S.	110
		Ashtabula	92
		Ashtabula	184
		Aspen	242
		Assiniboia	37
		Atacas	33
		Athabasca	37
		Atlas	5
		Atterbury, W. W. ..	93
		Aubrey	5
		Augustus, A. A.	110
		Aurelia	39
		Aviso	200
Vessel	Fleet No.		
AB-3	242		
Aberdeen	141		
Abernathy, John	142		
Abitibi	2		
Acadialite	112		
Acadian	30		
Ace	162		
Achilles	16		
Aclipson	126		
Adams, Cuyler.....	229		
Adele	75		
Adriatic	188		
Aetna	159		
Affleck, B. F.....	193		
Agnes P.	32		
Agoming	115		
Aid	33		
Alabama	40		
Alabama	92		
Albatross	221		
Alberta	37		
Alfred J.	131		
Algoen	3		
Algolah II	122		
Algonquin	108		
Algonquins	210		
Algorail	3		
Algoosoo	3		
Algosteel	3		
Alice	194		
Alice Vivian	255		
Allan, Sir Hugh	164		
Allan, No. 2.....	27		
Allen, Justine C.	130		
Allen, Martha E.....	130		
Alligator Boyle	33		
Alligator Eadie	33		

KOPPERS COAL



General Offices:

KOPPERS BUILDING, PITTSBURGH

Branch Offices: Chicago, Cincinnati, Cleveland,
Detroit, New York, Norfolk, Philadelphia

**THE KOPPERS COAL
COMPANY**

Vessel	Fleet No.	Vessel	Fleet No.
Aylmer	231	Birchton	95
		Black, Clarence A.	193
		Black Rock	236
		Blanche H.	131
		Block, Joseph	110
		Block, L. E.	110
		Block, Philip D. ..	110
		Bluebell	231
		Blue Cross	243
		Blue River	243
		Boardman, John W.	109
		Boeckling, G. A. ..	12
		Boland, John J.	16
		(nee U. S. Gypsum)	
		Boland, John J. Jr.	16
		Boss, C. J.	139
		Bowden, W. A.	32
		Bowman, A. F.	243
		Bradley, Carl D.	19
		Brandon	225
		Brazil	111
		Bricoldoc	184
		Brighton	216
		Britamette	20
		Britamlube	20
		Britamoco	20
		Britamoil	20
		Britamolene	20
		Britt, Thomas	178
		Brittania	15
		Britten, Fred A.	59
		Brock, General	141
		Brockton	225
		Brown Beaver	243
		Brown Brothers	104
		Brown, Fayette	188
		Brown, Harvey H.	188
		Brown, J. J. H.	21
		Bruln	
		(see Outarde)	
		Bruxelles	141
		Bryn Mawr	244
		Buckeye State	79

B

B-7	89
Back Bay	225
Badger State	79
Baird, Frank B.	244
Baker, George F. ...	193
Ball Bros.	229
Barbara Jo	202
Barge No. 3	218
Barge 137	244
Barkhamstead	196
Barlow	82
Barnes, Andrew M.	77
Barnes, Richard J.	77
Baroff	141
Barrallton	82
Barrie	30
Bartelme, M. J.	178
Batchawana	32
Baxter, Jas. Jr.	151
Bayfield	57
Bayton	211
Beauharnois	127
Beauvais, Ernest E.	86
Beaverton	30
Becker, B. H.	13
Becker, G. F.	13
Becker, John A.	147
Bennington	225
Berryton	211
Berthier	32
Berwind, Edward J.	14
Bess, Earl	141
Bethlehem	14
Bide-a-Wee	249
(nee Pittsburgh)	
Bienville	134
Bigwin	108
Billings, Frank	110

OLDMAN BOILER WORKS, Inc.

Marine and Stationary
Boilers

Manufacturers of

PORT COLBORNE FAIRLEADS

*Complete Portable and floating Equip-
ment for any repair work above the
water line.*

Steel fabricators

OFFICE & WORKS
32-42 Illinois Street
BUFFALO, NEW YORK

Twenty-four hour service

Office: Call Cleveland 0932

Resident Phones:

Grant 9100 Delaware 2917
Triangle 3327

Vessel	Fleet No.	Vessel	Fleet No.
Budd, Ralph	244	Calumet	188
Buffington, E. J.	193	Calverley, W. D. Jr.	110
Bug, G. L.	4	Cambria	14
Bulkarier	29	Campbell, J. A.	188
Bunce, E. M.	159	Campbell, Peter G.	67
Bunsen, R. W. E.	193	Camphausen, F. H.	80
Burgess, Rose	189	Canadian	30
Burke, Joseph P.	211	Canadiana	58
Burton	236	Canadoc	184
Bush	33	Canatco	28
Busse, Fred A.	41	Canfield, Capt. A.	238
Butler, Bessie	32	Canopus	188
Butler, Hazen	158	Caribou	68
Buttercup	82	Carillon	32
Buttercup	231	Cartierdoc	184
Butterfield	53	Carroll, Weston M.	26
Byers, A. M.	204	Carrollton	178

C

C.A.B.	97	Casey, Thos. Lincoln	237
CG-119	242	Cassidy, James H.	89
CG-153	242	Cayuga	30
CG-173	242	Cedarton	95
CG-192	242	Cementkarrier	29
CG-219	214	Central	156
C. No. 64	240	Cetus	188
C. No. 330	240	Chambers, Edward	93
C. No. 412	240	Chambly	32
C. No. 432	240	Champion	228
C. & R. Derrick		Charles L.	126
No. 1	141	Chattanooga	56
Cadillac	15	Chelsea	33
Cadillac	47	Chemong	211
Cadwell, C. W.	226	Cherry	242
Cahill, Toby	142	Chester	82
Cahotte	141	Cheyenne	210
Calcite	19	Chicago Ship No. 1	6
Calgarian	30	Chicago Ship No. 2	6
California	92	Chicago Tribune	201
		Chief Wawatam	140
		Churchill	236
		Cite des Trois Rivières	234

THE W. M. PATTISON SUPPLY CO.

Immediate Delivery from Stock:

EVERLASTING VALVE COMPANY

Blow-Off and Water Column Valves.

JONES & LAUGHLIN STEEL CORPORATION

Galvanized Steel Mooring Lines
and Wire Rope.

LUNKENHEIMER COMPANY

Bronze Iron and Steel Valves
for Marine Service.

STANLEY ELECTRIC TOOL COMPANY

Marine Scaling Hammers, Drills and Grinders.

WALL ROPE WORKS INCORPORATED

Harbor Tow Lines, Boat Sails,
Signal Halyards and Rat Lines.

Telephone: MAin 7320

777 Rockwell Ave., Cleveland, O.

Vessel	Fleet No.	Vessel	Fleet No.
City of Cheboygan	157	Colorado	92
City of Cleveland		Colton, A. W.	75
III	63	Columbia	15
City of Detroit III	63	Columbia	75
City of Dover	84	Comet	48
City of Erie	45	Commerce	107
City of Flint 32	186	Commodore	2
City of Grand		Coniscliffe Hall	99
Haven	87	Conneaut	254
City of Grand		Connecticut	92
Rapids	42	Connell, Charles J.	80
City of Grand		Connell, Frances M.	80
Rapids	87	Connell, Jr., P. G.	80
City of Hamilton	30	Connolly Bros.	
City of Kingston	30	No. 1	51
City of Milwaukee	87	Connors, W. J.	93
City of Montreal	30	Constance	54
City of Munising	157	Constitution	196
City of Saginaw		Consumer's Power	16
No. 31	186	Conway, Carle C.	101
City of St. Joseph	207	Coolidge, S. B.	110
City of Toronto	30	Coralia	173
City of Windsor	30	Corey, William E.	193
Clark, Simon	54	Cornelius, Adam E.	16
Clark, T. J.	231	Cornelius, Adam E.	
Clarke, E. A. S.	188	Jr.	16
Clement, N. P.	244	Cornell	193
Clemson, D. M.	193	Cornett, J. A.	31
Cleveland Ship	6	Corvus	188
Clevelandier	166	Coteau	243
Close, Robert J.	6	Coteaudoc	184
Clyde	154	Coulby, Harry	188
Clyde, W. G.	193	Courtney	217
Coalfax	50	Covalt	165
Coalhaven	30	Cowan, W. P.	222
Cobourg	216	Cowle, John B.	91
Colbert	134	Craftsman	6
Cole, Thomas F.	193	Crapo, S. T.	109
Colfax	242	Crawford	242
Collier	30	Crawford, G. G.	193
Collingdoc	184	Crawford, W. D.	101
Collingwood	30	Crescent	26
Collins, E. C.	193	Crescent City	173
Colonel	47	Crest	89

KECKLEY PRECISION PRESSURE REGULATOR

with
STAINLESS STEEL
RENEWABLE VALVE
AND SEAT

and
UNIT PILOT VALVE

300 LBS. or 1 LB.
For Steam or Air

High initial pressures
can be readily reduced
in one step to pres-
sures as low as one
pound without change

of springs and will be maintained con-
stantly from no flow to full flow require-
ments and hold tight on dead end service.

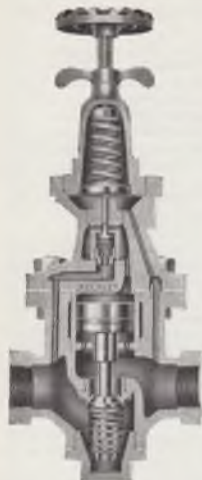
*Tested and approved U. S. Navy for Design, Materials,
Workmanship and Operation, U. S. Maritime Commission
and Bureau of Marine Inspection and Navigation*

O. C. KECKLEY COMPANY

Steam Traps—Temperature Regulators—Pump Regulators—
Water Gauges—Gauge Cocks—Strainers

400 West Madison St. Chicago, Illinois

SIDNEY E. SMITH, BUFFALO, N. Y.
Great Lakes Representative



Vessel	Fleet No.	Vessel	Fleet No.
Crete	188	Deschenaux	141
Crocus	242	Detroit	
Croft, Harry W.....	188	(see Gen. E. M. Markham)	
Crowley, P. E.....	93	Detroit	238
Crudoil	48	Detroit	247
Crusader	196	Detroit	166
Cumberland	239	Diamond Alkali.....	16
Cushing, John F.....	89	(see Frank H. Goodyear)	
Cyclo-Chief	148	Dick, Baxter	167
Cyclo-Warrior	148	Dick, Charles	167
Cygnus	188	Dick, O'Connor.....	167

D

Dahlia	242	Dickson, Wm. B.....	193
Dahlke, H.	172	Diligence	242
Dalhousie City.....	171	Dinkeg, Alva C.....	193
Dalton, Henry G.....	188	Dix	242
Dalwarnic	28	Dixon	238
Damia	113	Dixon, Frank	31
Daniels, Wm. H.....	244	Dixon, Geo. D.....	93
Dark, Samuel J.....		Dolomite No. 2.....	205
(see Wm. R. Panton)		Dolomite No. 3.....	
Daryaw, Henry C. 60	229	(see Petroheat)	
Davidson, James....	229	Donald B.	255
Davidson, Jas. E.....	229	Donnacona	30
Davie, George T.....	199	Donner, William H. 14	
Davis, J. M.....	93	Douglas M.	146
Davock, W. B.....	188	Douglass, Edwin T. 244	
Dearborn	82	Dow Chemical	16
De Grasse	209	(see Diamond Chemical)	
De Laverendrye.....	234	Dramis	141
Delaware	92	Draper, T. E.....	33
Delaware	210	Dredge No. 2.....	255
Delkote	69	Dredge, L. S. No. 3 151	
Delver	194	Drill Boat No. 5....	151
Dempsey, E. C.....	89	Drumhroe	211
Denmark	91	Dubrue, J.	195
Derrick & Hoister		Dubuque	240
No. 2	141	Duluth	93
Derrick Scow No. 3 151		Dundas	30
Derrick Scow No. 4 151		Dunkirk	92
Derrick Scow No. 8 6		Dunlap, Chas. E.....	229

EYE-HYE

protects you and
your vessel from
danger and
expense of water
level accidents.

Bring your water gages down for frequent easy reading with Reliance EYE-HYE Remote Reading Gage. It gives you a clear sharp reading in illuminated green liquid. Easy to install. Dependable, trouble-proof.

Hundreds in use on land and sea; approved by the Federal Bureau of Navigation and Inspection. Make your vessels safer, your power control more efficient. Write today for Bulletin 382.

The Reliance Gauge Column Co.

5902 Carnegie Ave., Cleveland, O.

Reliance

Boiler Safety Devices Since 1884



Vessel	Fleet No.	Vessel	Fleet No.
Dunn, Jr., John.....	91	Ethel	
Dupre, F.	194	(see R. C. Co. Tug	
Dupre, Jr., Yvon....	216	No. 1)	
Durham, Robert P.		Eureka	216
(see Heron Bay)		Evelyn, R.	202
Durocher, T. L.....	6	Ewing	242
Durston, J. F.....	91	Ewig, Harry T.	178

E

F

Eads, James B.....	244	Fairbairn, Sir Wm. 24	
Eaglescliffe Hall.....	99	Fairlake	211
Eastern States.....	63	Fairmount	30
Easton	211	Fairport	92
Eaton, Geo. L.....	99	Fairriver	211
Ecorse	90	Faith	75
Edenborn, William	193	Falcon	153
Edgewater	82	Farr, M. E.....	229
Edmonton	30	Farrandoc	184
Edna G.	70	Farrell, James A....	193
Edward, George.....	202	Favorite	92
Edward E.	6	Fayling	255
Edward K.	250	Feeley, Wm. P.....	89
Elba	188	Felicia	216
Elgin	30	Fellowcraft	172
Elmbay	30	Ferbert, A. H.....	193
Elva	8	Fernic	30
Ellwood, Isaac L....	193	Ferris, James E....	110
Emery, John R.....	74	Field, Albert C.....	244
Emporer	30	Fiertz, Alden Barnes	77
Empire	73	Fiertz, Robert	
Ericsson, John	244	Barnes	77
Erie	78	Filbert, William J.	193
Erie	238	Findlay, Harry L.	224
Erie Isle	152	Fink, George R.....	101
Erie Isles	76	Finland	91
Escanaba	242	Fire Chief	216
Essex	248	Fisher, Thomas....	52
Esther	54	Fitch, William F....	63
Ethel J.	131	Fitzgerald, W. E....	225
Ethel	164		



"John Crane"
PACKING

for

MARINE SERVICE

A Complete Line of

Metallic & Fabric Packings

Metallic Packings
Semi-Metallic Packings
Shredded Metallic Packing
Plastic Packings
Jacketed Plastic Packings

H. P. Spirals
Braided Asbestos
Braided Flax
Hydraulic Tucks

Asbestos Sheet
Red Rubber Sheet

Water-Proof Sheet
Oil-Proof Sheet

Metallic Condenser Packing

CRANE PACKING CO.

1800 Cuyler Ave.

Chicago, Ill.

Marine Representative

FRED M. HARMON

380 Rockefeller Bldg.

Cleveland, Ohio

Phone: PRospect 5543

Vessel	Fleet No.	Vessel	Fleet No.
Fleetwood	172	General	120
Florence J.	131	Georgia	92
Florida	92	Georgian	64
Ford, Benson.....	82	German, A. M.....	31
Ford, Emory L.....	101	Gibson, A. E.....	119
Ford II, Henry.....	82	Gilbert	129
Fort Meigs	212	Gilchrist	211
Fort Wildoc	184	Gillen, Edward E... 86	
Francis R.	202	Gillies, Donald B... 110	
Frank W.	92	Gladiator	71
Franklin C.	141	Glen Allan	11
Franks, Charles.....	135	Glen G.	83
Franquelin	201	Glenbogie	244
Frantz, Joseph H. 178		Gleneagles	30
Fraser, Jean	189	Glenelg	30
Fraserville	218	Glenross	30
Fredmac	216	Globe Ship	6
Frick, Henry C.....	193	Goderich	30
Fritz	193	Gold Digger	139
Frontenac	31	Goodtime	45
Frontenac	47	Goode, R. H.....	72
Frontenac	228	Goodyear, Frank H.	
Fucik, E. James....	80	(see Diamond	
Fueloil	94	Alkali)	
Fulton, Robert	193	Gorman, J. E.....	93
Fundy	194	Gotham	131
		Graham, Col. J. D. 238	
		Grainmotor	30
		Grampian	61
		Grand Island	47
		Grant, F. W.....	31
		Grattan, W. S.....	25
		Gray, G. R.	2
		Great Western	189
		Greater Buffalo.....	63
		Greater Detroit.....	63
		Green, Andrew H. 89	
		Green, Fred W.....	177
		Green Bay	203
		Green Island.....	82
		Greiling, Fred C.... 139	
		Grenville	32
		Grey Beaver	244
		Guardian	260

G

Gallagher, Michael..	158
Galloway, Chas. W.	178
Ganandoc	184
Gargantua	2
Gary, Elbert H.....	193
Gates, John W.....	193
Geary, G. R.....	230
Gehm, John	16
Geistman, John P. 131	
Geistman, John P. 211	

CHAMPION VESSEL FUEL

It's the best Steamboat Coal

24-Hour Service
at all Lake Erie Ports
and

St. Mary's River Docks
Lime Island, Mich.
Sault Ste Marie, Mich.

●
Detroit River Dock
Windsor, Ont.

●
Fuel Lighter at Cleveland, O.

●
*The Fastest and Most Conven-
ient Plants on the Great Lakes*

●
Pittsburgh Coal Company
Terminal Tower
CLEVELAND, OHIO

Vessel	Fleet No.	Vessel	Fleet No.
H			
H. C. M. No. 8.....	144	Holley, Alexander	244
Hagarty	30	Holloway, John A.	244
Halcyon	248	Holloway, W. W.....	178
Halifax No. 25.....	194	Hollyhock	242
Hall	181	Holst, R. W.....	246
Hall, Bob	32	Hoopes, Wm.	209
Hallam Bros.	4	Horton	2
Hamildoe	184	Hosford, Harry	
Hamonic	30	Wm.	24
Handy Boy	152	Houghton, Douglass	193
Hanlan, Ned	230	House, Francis E..	193
Hanna, Jr., H. M..	178	Houson	211
Hanna, Leonard C.	14	Hoyt, Elton, II....	188
Harrison	107	Hubbard, Charles...	91
Hartwell, Fred G..	101	Hudson	89
Hartvard	193	Hudson, A. A.....	176
Harvester, The....	114	(nee Rahane)	
Harvey	227	Hudson, Bruce.....	136
Harvey, A. F.....	193	Hullman	141
Harvey, F. E.....	172	Hulst, John	193
Hastings	30	Humphrey, Geo. M.	224
Hatfield, J. A.....	193	Humrick	82
Hausler, Martin Jr.	89	Huntley, Charles R.	244
Hawk	257	Huron	35
Hebard, C. S.....	251	(see Dr. W. G.	
Hector	31	McGuire)	
Heekin, Albert E..	101	Huron	254
Hemlock	188	Huronic	30
Henderson, J. A. H.	33	Hustler	6
Hennepin	47	Hutchinson, C. L..	110
Hercules	180	Hyacinth	242
Heron Bay	201	Hydro	123
(nee Robt. P.		Hyman	26
Durham)		I	
Hilda	199	Iango	243
Hill, James J.....	193	Iocolite	112
Hill, L. W.	101		
Hobson, Robert....	188		

The ONE wrench that Guarantees You "No Housing Repair Expense"

RIDGE—the name on millions of wrenches that stay on the job. A housing that's a sort of miracle of design and alloy-metal because it won't warp or break. No "out for repairs," no repair expense, fewer "spares" needed. That remarkable housing assures you also an adjusting nut that always spins freely to size, never binds. Safe chrome-molybdenum jaws, replaceable, handy pipe-scale on hookjaw. The wrench that costs practically nothing for upkeep, outstandingly popular with men who know fine tools. Ask your Supply House.



The Ridge Tool Co., Elyria, Ohio

RIDGE PIPE TOOLS

Vessel	Fleet No.	Vessel	Fleet No.
Iocoma	112	John, R.	272
Idaho	92	Johnson, Horace....	193
Illinois	89	Johnston, Robert E.	55
Illinois	92	Joliet	47
Illinois	252	Joliet, Louis	134
Imperoyal	112	Jones, B. F.....	118
India	23	Jones, Harry R.....	188
Indiana	89	Josephine	59
Indiana	92	Judge Hart	244
Industry	107	Judge Kenefick.....	244
Ingalls, George H....	63	Juniata	93
Inglis, Wm.	231	Junior	89
International	116	Jupiter	121
International, The..	114		
Iowa	92		
Ireland, R. L.....	251		
Ironwood	172		
Iroquois	108		
Irvin, W. A.....	193		
Irwin, John	148		
Iselin, Adrian.....	100		
Ishpeming	47		
Islay	142		
Itororo	232		

K

Kam	2
Kansas	92
Katchewana	32
Kearsarge	28
Keewatin	37
Kellers, Frederick T.	156
Kelley Island	123
Kelley, Norman.....	250
Kendall, John	62
Kendrick, Edw. S.	251
Kennedy, John.....	141
Kenora	30
Kenordoc	184
Kenosha	239
Kentucky	92
Kerr, D. G.....	193
Keybar	124
Keybell	124
Keydon	124
Keyholt	124
Keymont	124
Keynor	124
Keyport	124

J

Jack	162
Jackson	242
Jackway, Wm. H....	126
Jaffray, C. T.....	93
Jalobert	32
Janin, Claire.....	119
Jason	16
Jean T.	218
Jeanne T.	218
Jenkins, Chas. O....	158
Jerry W.	202
Joffre S.	218
John, J. B.....	187



A finish for every surface, and a full line of high quality Marine Paints, Varnishes and Enamels conveniently available at all chief lake ports.



THE SHERWIN-WILLIAMS Co.

Cleveland, O.	601 Canal Road, N. W.
Buffalo, N. Y.	37 Pearl St.
Chicago, Ill.	333 North Michigan Ave.
Detroit, Mich.	1960 Milwaukee Ave., E.

*Always
on watch!*

SOHIO MARINE LUBRICANTS

—For Safety and Economy

Your ships' engines undergo their greatest strain when they must battle rough weather and pounding seas. When they do, it's reassuring to *know* that with SOHIO Marine Lubricants on the job, they're *ready* for and *protected* against stress and strain. For SOHIO Marine Lubricants are *tough*; *extra*

protection is built into them—they hold their body when the load rises sharply under head wind pressure—they do not thin out under heat. So for safe, economical operation, put SOHIO on watch; you'll find SOHIO your *best* mate—one that's never *off* duty on its job of saving you time and trouble.

SOHIO MARINE LUBRICANTS

Meet the lake carrier's every need



SOHIO *Marine* LUBRICANTS

The Standard Oil Co. (Ohio)

H. J. Braund, Marine Representative
MAin 7400 Midland Bldg., Cleveland

AT THESE CONVENIENT LAKE PORTS

*These ship chandlers stock SOHIO Marine
Lubricants*

ASHTABULA

The McKinnon Iron Works
493 E. 5th St.
Phone HARbor 5320-J Day
HARbor 1177-R Night

BUFFALO

The Upson-Walton Company
182 Ohio St.
Phone CLeve. 4027

CLEVELAND

The Upson-Walton Company
1310 W. 11th St.
Phone MAIn 7444 Day
BOulevard 7817 Night

CONNEAUT

Pittsburgh Steamship Co.
At the Dock
Phone MAIn 1248

ERIE, PA.

A. H. Brebner & Son
425 State St.
Phone C55-121 Day
C55-119 Night

FAIRPORT

Beacon Market
At the Dock
Phone FAirport 237

HURON

Henes and Wilkes
Main St. Phone 58 Day
250-W Night

LORAIN

W. W. Aiten, Hardware
353 Broadway Phone 4238

SANDUSKY

Camp St. Market
1046 Camp St.
Day Phone Market 330
Night 2169-J or 2664-J

TOLEDO

The Hardy & Dischinger Co.
121 St. Clair St. N.
Phone MAin 1124 Day
Forest 6393 Night

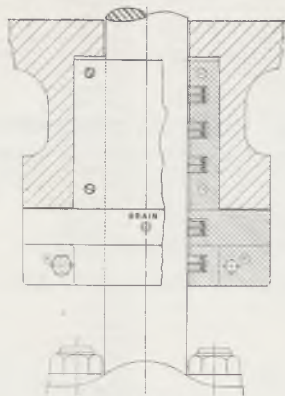
27

Vessel	Fleet No.	Vessel	Fleet No.
Keystate	124	Lake Sapor	82
Keyvive	124	Lakeside III	22
Keywest	124	Laketon	211
Kinch, William H.	89	Lakewood	26
Kindersley	31	Lamont, T. W.	193
King	162	Lanark	30
King, Willis L.	118	Lansdowne	35
Kingdoc	184	La Plante	145
Kingston	30	Laracina	33
Kinmount	30	La Salle	47
Kinney, A. T.	251	Latin American	227
Kishman, H. B.	125	Laughlin, James	118
Kling, John A.	206	Laurier, Wilfred	181
Koalkraft	219	Lavaldoc	184
Koenig, Peter	152	Lavaltrie	32
Kopmeier, Norman		Lavoilette	32
J.	16	Lawrendoc	184
(nee Dow Chemical)		Lebanon	14
Krupp, Alfred	163	Lee, Frederick	242
Kulas, E. J.	251	Legare	242
		Lehigh	14
		Lemoyne	30
		Lennox	30
		Leona	207
		Leonard, George B. ..	91
		Leopold, N. F.	110
		Leslie, Alexander	128
		Lester, K.	125
		Lethbridge	30
		Levis	195
		Liberty	18
		Liberty	55
		Liberty	177
		Lightship No. 75	255
		Lightship No. 103	255
		Lillis, John T.	80
		Limit	154
		Lindabury, R. V.	193
		Linn, William R.	
		(see L. S. Westcoat)	
		Livingston	211
		Lockwell	211
		Lockwood	236
		Londonderry	216

L

La Belle	101
La Salle	15
Lachine Canal	32
Lachinedoc	184
Lackawanna	14
Lagonda	183
Lake Allen	82
Lake Chelan	16
Lake Crystal	82
Lake Farge	82
Lake Folcroft	82
Lake Freeland	82
Lake Frugality	82
Lake Frumet	82
Lake Hemlock	82
Lake Inaha	82
Lake Louise	82
Lake Pleasant	82

FRANCE Split Case Marine Packing



TYPE No. 250

Type illustrated is furnished for intermediate and low pressure piston rods also all valve rods. It contains three pairs of pressure rings, one pair of condensation stripping rings and a pair of rings to protect vacuum. Packing for high pressure rods is of the same construction except that it contains an additional uppermost groove provided with a breaker ring.

MARTELL PACKINGS

We possess the only records of this type of packing having purchased the Martell Packing business in 1931. Renewals and replacements furnished accurately and promptly.

THE FRANCE PACKING COMPANY

Tacony, Philadelphia

Great Lakes Representative:

Frank D. Foster

407 The Arcade Cleveland, Ohio

Phone: CHerry 6357

Vessel	Fleet No.	Vessel	Fleet No.
Loo Loo	39	McNaughton, Jas.	251
Loomis, Ed. E.....	93	McQueen, Patricia..	152
Lorain	92	Macaulay, A. M.....	31
Lorain	137	Macbeth	24
Lorain Ship	6	Mackay, Robert.....	164
Lorene	250	Mackinac Islander	8
Loretta	32	Mackinaw City.....	157
Louisiana	92	Macoubry, J. H.....	158
Louisville	168	MacPherson, N. B.	244
Luedtke, Karl E.....	138	Madison	87
Lydon, William A.	89	Magog	31
Lynch, Thomas.....	193	Magpie	2

M

M-9	89	Maid of the Mist No. 1	143
M.F.D. No. 15.....	160	Maid of the Mist No. 2	143
M.F.D. No. 29.....	160	Maine	92
McAlpine, James E.	21	Maine	227
McBride, Sam.....	231	Maitland, Thomas..	197
McCool, Daniel.....	38-A	Majestic	89
McCormick, John A.	89	Malietoa	193
McCullough, C. H.		Mamie	228
Jr.	188	Manila	193
McDonough	236	Manitoba	37
McDougald, John A.	67	Manitou	68
McDougall, Alex....	24	Manitoulin	182
McFarland	178	Manitowoc	239
McGeane, W. H.....	110	Manitowoc	247
McGinnis, Harry....	89	Manseau No. 101....	141
McGonagle, W. A.	193	Manseau No. 103....	141
McGuire Dr. Walter G.	89	Manseau No. 104....	141
(nee Huron)		Manseau No. 2.....	141
McKee, Geo. M.....	141	Manseau No. 107....	141
McKellar, J. O.....	211	Mantadoc	184
McKerchey, J. M....	123	Manuel, John S.....	110
McKinney, Price....	110	Mapel	242
McLauchlan. Wm....	188	Maplebranch	141
McLean, John.....	193	Maplecourt	260
		Mapleheath	30
		Mapleton	30
		Marguerite W.....	131

TOWAGE, SALVAGE, Etc.

SINCENNES-McNAUGHTON LINE LTD.

Head Office: 635 Common St., Montreal
Phones: Day MA. 8383, Night MA. 2553

Branches:

SOREL — Phones: Day 401, Night 579
PORTSMOUTH—Phones: Day & Night 1500

UNITED TOWING & SALVAGE COMPANY LIMITED

Head Office: 413 Public Utilities Building,
Port Arthur, Ont.
Phones: Day North 159, Night North 701

Branches:

SARNIA — Phones: Day & Night 1365
MONTREAL — Phones: Day MA 8383
Night MA 2553

Vessel	Fleet No.	Vessel	Fleet No.
Marguerite T.	218	Medill Joseph	41
Marigold	242	Mekinac	144
Marinette	239	Meldrum, H. A.	147
Marion	89	Menasha	239
Mariposa	24	Mercury	48
Marita	23	Merganser	238
Maritana	24	Merle H.	131
Markham, Gen.	48	Merle J.	126
Markham, Gen. E. M.	89	Messenger	169
(nee Detroit)		Mexoil	94
Marquette	47	Meyer, John E.	10
Marquette & Besse- mer No. 1.	144	Michigan	47
Marsala	24	Michigan	89
Martha B.	126	Michigan	92
Martha C.	89	Michigan	103
Marvet H.	126	Michigan	155
Mathilda	216	Midland City	84
Mary C.	89	Midland Prince.	30
Mary F.	125	Miller, J. Clare.	178
Maryland	14	Miller, Governor.	193
Maryland	92	Mills, D. O.	188
Mascot	169	Milwaukee	93
Massachusetts	92	Milwaukee	239
Massey, F. V.	81	Minch, Anna C.	211
Massey, J. F. Jr.	222	Minch, Philip	224
Mataafa	193	Mindemoya	161
Mather, Samuel.	188	Minnesota	92
Mather, W. G.	47	Minnie	52
Mathewston	211	Miseford	151
Mathiott, E. G.	178	Misener, Scott.	211
Matton	147	Mississippi	92
Matton 10	147	Missouri	92
Matton 20.	147	Missouri	252
Matton 21	147	Mitchell, Pentecost ..	193
Matton, John E.	147	Mitchell, Samuel.	109
Matton, Ralph E.	147	Mitschfibre	69
Maunaloa	193	Mogul	89
Mayer, Oscar F.	89	Mohawk Belle	108
Meadcliffe Hall.	99	Mondoc	184
Meade, G. G.	239	Mont Louis	99
Mead, George W.	63	Montana	92
Meaford	30	Montcalm, General ..	141
		Montcalm Derrick No. 1.	141

ELGIN SLUDGE DECONCENTRATOR

The ELGIN System makes a boiler self-cleaning, permitting long periods between washouts. Sludge and mud are removed while the boilers are in service. Deconcentrators insure:

No Mud No Sludge No Scale
Better Circulation Clean Boilers



Elgin Chemical Treatment

ELGIN Balanced Chemical Treatment and ELGIN Service prevent scale, corrosion and embrittlement. Fleet supervision insures uniformity of boiler water control for each steamer.

WRITE FOR MARINE BULLETIN

Elgin Softener Corporation

ELGIN, ILLINOIS

Vessel	Fleet No.	Vessel	Fleet No.
Oakton	95	Patrol No. 4	141
Oakwood	172	Paul, Chas. A.	251
Octorara	93	Paul T.	218
Odanah	188	Peel	180
Ogdensburg	36	Peerless No. 1	135
Ohio	89	Pegasus	188
Ohio	92	Peggy Ann	126
Oklahoma	92	Pelee	102
Olcott, W. J.	193	Pellett, John H. ...	250
Ontadoc	184	Penetang	30
Ontario No. 1.....	179	Pennsylvania	92
Ontario No. 2.....	179	Penobscot	173
Oregon	92	Pere Marquette 12..	186
Orr, Arthur	28	Pere Marquette 14..	186
Osborn, F. C.	78	Pere Marquette 17..	186
Osborne, A. W.	251	Pere Marquette 18..	186
Osler	30	Pere Marquette 19..	186
Ossipee	242	Pere Marquette 21..	186
Ostrea II	141	Pere Marquette 22..	186
Ottawan	181	Perkins, Geo. W. ...	193
Ottowalite	112	Perry, D. P.	8
Outagamie	222	Perseus	188
Outarde	201	Peters, S. C.	86
(nee Brulin)		Peterson, Frank J.	178
		Petroheat	65
		(nee Dolomite 3)	

P

P. W. D. No. 117....	180	Philadelphia	213
Paducah	240	Phipps, Henry	193
Paine, William A. ...	110	Pickands, Col. Jas.	188
Paisley, Robt. J.	178	Pickanock	33
Palmer, Wm. P.	193	Pilkey, Wm. B.	178
Panoil	94	Pilsbury, J. S.	244
Panton, Wm. R.	72	Pine Ridge	190
(nee Samuel J. Dark)		Pioneer	47
Paratex	96	Pioneer	238
Pargny, E. W.	193	Pittsburgh	192
Parks, Beaumont....	222	Pittsburgh	
Patdoris	220	(See Bide-a-Wee)	
Pathfinder	188	Poe, O. M.	193
		Pollock, W. G.	158
		Pomeroy, Robt. W.	244
		Ponoka	243
		Pontiac	47
		Pontoon	92

COAL

MODERN FUEL DOCK

Located conveniently on St. Clair
River beside International Tunnel.

Quality Coal
Fast Fueling

24 HOUR SERVICE
ACCURATE WEIGHTS

Marine Agents
VACUUM OIL COMPANY

Complete Stock Available

Telephone Pt. Huron 21321
Radio via. Pt. Edward

**Port Huron Coal
& Dock Company**

FORT HURON, MICH.

Operated by
The Cleveland-Cliffs Iron Company
Cleveland, Ohio

Vessel	Fleet No.	Vessel	Fleet No.
Pope, E. C.	172	Rahane	
Portadoc	184	(see A. A. Hudson)	
Porter, Hector	194	Rammacher, J. J. ..	244
Porter, Lawrence T.	194	Ramona	108
Portwell	211	Rand, Geo. F.	16
Post, G. G.	178	Ranney, Rufus P. ...	229
Pratt, John	216	Rapids Prince	30
Prescodoc	184	Ream, Norman B. ...	193
Prescotont	36	Redcloud	174
Prescott	30	Red Crown	222
Presque Isle	47	Red Crown	250
Price, John H.	99	Redfern	174
Princeton	193	Redriver	174
Prindoc	184	Redwood	174
Progress	139	Reed, James H.	188
Progresso	152	Rees, W. D.	38
Pronto	238	Regent	96
Purvis, E. D. M.	198	Reginald	52
Put-in-Bay	9	Reidenbach, R. P. ..	92
Pythonga	33	Reiss	203

Q

Quebec	30
Quedoc	184
Queen	162
Queen City	193
Quintus	236

R

R. C. Co. Tug No. 1	208	Richelieu	30
(nee Ethel)		Rideaultite	112
Racine	92	Rival	216
Racine, Pierre	216	Riverton	211

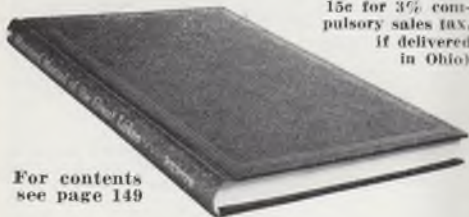
MARINERS' MANUAL OF THE GREAT LAKES

By Charles Richter

Master mariners, port authorities, vessel operators and seamen anticipating increase in grade should have copies of this new practical book. Never before has there been available a book containing full and complete data and information on Great Lakes navigation, loading and ship management.

192 pages — 22 illustrations — 12
tables—6 x 9 inches—cloth bound.

\$5.00 Postpaid (Plus
15¢ for 3% com-
pulsory sales tax,
if delivered
in Ohio)



For contents
see page 149

Valuable "Tool" for Chart Tables

Fully cross-indexed information answers practically any question that can arise on shipboard. Every chart table should have a copy for constant use. Commander W. A. Swanston, U. S. N., Cleveland Hydrographic Office, says: "It supplies a much needed source of information of great value . . ." Turn to page 149 for complete contents.

THE PENTON PUBLISHING CO.
Book Dep't. Cleveland, Ohio

Vessel	Fleet No.	Vessel	Fleet No.
Robbins, S. H.	251	St. Marys	238
Roberts, Jr., P.	193	St. Mary's River	
Robinson, C. S.	188	Patrol	242
Robinson, Lucius		Ste. Claire	15
W.	99	Ste. Marie	140
Robinson, T. W.	19	Ste. Theresa A.	183
Roche, John J.	80	Salvage Prince	199
Rocket	170	Salvage Queen	199
Rockcliffe Hall	99	Salvus	27
Rockwood	172	Sand Boy	199
Roebing	193	Sandcraft	55
Roen, John	207	Sandland	226
Roger M.	52	Sandmaster	55
Roen, John Jr.	207	Sandusky	92
Rogers City	156	Saracen	113
Rogers, G. W.	31	Sargent	93
Rogers, Henry H.	193	Sarnia City	216
Roman, P. C.	147	Sarniadoc	184
Rooney, Wm. E.	39	Sarnian	244
Roosevelt, Theodore	43	Sarnolite	112
Rouille	194	Saskadoc	184
Royalite	112	Saskatoon	30
Royalton	211	Saturn	188
Rush	242	Saucon	14
		Sault Ste. Marie....	238
		Saunders, E. N. Jr.	158
		Saurel, Capitaine	141
		Savannah	236
		Scandrett	93
		Schiller, Wm. B.	193
		Schneider, Cletus ..	47
		Schneider, Pam	47
		Schoellkopf, J. F.	
		Jr.	16
		Schoonmaker, Col.	
		J. M.	215
		Schupp, Wm.	285
		Schwab, Chas. M.	188
		Scobell, Jos. C.	78
		Scott, T. J.	214
		Scout	89
		Sea Bird	126
		Seath, David	141
		Secord, Capt. C. D.	163
S. O. Co. "C"	222		
Sabin, L. C.	92		
Sachem	72		
Sacramento	240		
Safeguarder	32		
Sagamore	196		
Saginaw	178		
Saguenay	30		
St. Clair	39		
St. Heliers	32		
St. Ignace	157		
St. Laurent	218		
St. Lawrence	30		

S

Vessel	Fleet No.	Vessel	Fleet No.
Seeandbee	46	Soreldoc	184
Selkirk	30	Soulanges	32
Sellwood, Joseph ..	188	South American ..	40
Senniece	120	South Park	173
Sensibar, J. R.	55	Sparta	229
Serieux	141	Spragge	151
Seubert, E. G.	222	Sprinkle, J. R. ...	250
Shasta	229	Sprucebay	30
Shaughnessy, Sir T.	163	Stackhouse, Powell	14
Shaughraun	72	Stadacona	30
Shaun Rhue	72	Stamina	120
Shaw, Howard L. ..	244	Standard Portland	
Sheadle, J. H.	47	Cement	16
Shelter Bay	201	Stanton, John	110
Shenango	215	Starmount	30
Sherwin, John	188	Starwell	211
Shiras, McGilvray..	193	Steel Chemist	241
Shuniah	194	Steelmotor	241
Sicken, M.	60	Steelton	14
Sid Jr.	6	Steelvender	241
Sierra	229	Steinbrenner, H. ...	224
Simard, Capt.	141	Stephenson, Geo. ...	24
Simcoe	30	Stewart, Graeme ...	41
Simcoe, Miss	231	Stewart, Donald ...	30
Simcolite	112	Stewart, James	244
Sinaloa	172	Stewart, Robert W.	222
Sioux	210	Stifel, William F. .	178
Skater	105	Stokes, Henry	152
Smeaton	193	Stone, Amasa	188
Smith, Alfred H. ..	93	Stone Boy	199
Smith, Edmund P. .	16	Stover, John R.	39
(nee Harry Yates)		Straits of Mackinac	157
Smith, B. Lyman ..	91	Strathbogie	197
Smith, H. G.	6	Strathbuoy	243
Smith, Hurlbut W. .	91	Strathmore	243
Smith, L. P.	89	Stuart, M. H.	133
Smith, Lyman C. ..	91	Sullivan, J. J.	110
Smith, Monroe C. ..	91	Sullivan Bros.	225
Smith, Wilbert L. .	91	Sulphite	69
Snyder, Jr., W. P. .	215	Sultana	173
Sonia	117	Sumac	139
Sonoma	173	Sumatra	229
Sonora	173	Superior	176
Socdoc	181	Superior Ship	6

Vessel	Fleet No.	Vessel	Fleet No.
Supertest	191	Thunder Bay Quar-	
Surewater	34	ries	16
Sweden	91	(nee John J. Boland)	
Swderope	69	Tionesta	93
Swderope	172	Tipperary	153
Sylvania	229	Toledo	89

T

T. J. S. No. 1	214	Toledo	92
Tadoussac	30	Tomlinson, G. A. ..	110
Tahoma	242	Tommy T.	126
Talarite	112	Torian, George L. ..	244
Tamarack	242	Torondoc	184
Tampico	172	Torrent	160
Taplin, Frank E. ..	251	Tourist	85
Tate, Ben E.	178	Townsend, E. Y. ...	14
Taurus	188	Transiter	232
Taylor	236	Translake	232
Taylor, B. H.	19	Transport	207
Taylor, Myron C. .	193	Transriver	232
Taylor, S. G.	244	Termaine, Morris S.	63
Teakbay	30	Tenora	33
Templeton	33	Trevisa	33
Ten	162	Trillium	231
Tennessee	92	Trimble, Richard ..	193
Texaco 155	227	Tristan	24
Texaco 156	227	Troisdock	184
Texaco 158	227	Turbo	89
Texas	92	Tyrone	24
Theresa T.	218		
Thomas, E. P.	193		
Thomas, Sidney G.,			
(see Swderope)			
Thompson, C. A. ..	158		
Thompson, D. P. ..	110		
Thompson, Smith ..	91		
Thordoc	184		
Thorold	201		

U

Uhrig, Alex B.	204
Underwood, F. D. ..	93
U. S. Gypsum	16
(nee Thunder Bay	
Quarries)	
Upson, Andrew S. .	24
Upson, J. E.	251
Utah	92
Utica	93

Vessel	Fleet No.	Vessel	Fleet No.
V			
Valley Camp	245	Wawasee	250
Vandoc	184	Way, S. B.	178
Vega	188	Wayne	248
Venus	188	Weddell, Robt. G.	141
Vercheres	32	Weed, Shelton	244
Vermont	92	Weir, David M.	101
Verona	188	Weir, Ernest T.	101
Victoria	26	Welland	32
Victorious	24	Wellandoc	184
Virginia	64	Wellston	250
Virginia	92	West, B. E.	65
Virginia, Joan	136	West, Charles C.	206
		Westcliffe Hall	99
		Westcoat, L. S.	94
		(nee Wm. R. Linn)	
		Western States	63
		Westmount	30
		Weyburn	30
		Whalen, E. C.	52
		Whalen, James	243
		Wheeler, E. S.	238
		White, Peter	47
		White, W. F.	19
		Whitney, William	
		A.	154
		Wickwire, T. H.	
		(see Harry Yates)	
		Widener, P. A. B.	193
		Wilda	33
		Wilkinson, H. S.	91
		Willard, Daniel	93
		Willard L.	55
		Williams, Harry B.	89
		Williams, H. D.	193
		Williams, John C.	101
		Williams, John R.	89
		Willie W.	97
		Willowbranch	141
		Wilmette	240
		Wilmington	240
		Wilson, Anna C.	105
		Wilson, Capt. Thos.	251
		Windoc	184
		Windsolite	112

W

Wabash	7
Wahcondah	1
Wahnapitae	150
Wallace, J. C.	188
Wallace, Robt. B.	251
Walnut	242
Walsh, James P.	110
Walters, Thomas	118
Wapus	33
War Horse	89
Warren, Wm. C.	244
Warrenco	199
Warrior	71
Washington	92
Waterbus	84
Waterton	211
Watson, R. H.	193
Watt, James	172
Waubashene	149
Waukegan	92

Vessel	Fleet No.	Vessel	Fleet No.
Windsor	247	YP-31	240
Winnipeg	30	YP-32	240
Winyah	44	YP-61	240
Wisconsin	92	YP-62	240
Wolf, William H.	225	Yale	92
Wolf, General	141	Yates, Harry	
Wolfe Islander	253	(nee Theodore H.	
Wolcott	238	Wickwire)	
Wolvin, A. B.	188	Yeldah II	98
Wood, Joseph	101	York, Miss	231
Woodruff, Graham		Yorkton	211
C.	173	Yosemite	47
Wyandotte	254	Young, Col. E. M.	229
Wyman, Walter	131	Young, John	164
Wyoming	92	Youngstown	188

Y

YP-24	240
YP-25	240
YP-26	240
YP-27	240
YP-28	240
YP-29	240

Z

Zenda	117
Zenith City	193
Zephyr	48
Ziesing, August	193



REPAIRS FROM YOUR DEALER
OR DIRECT

- ALPENA
- Huron Industries Co.
- ASHTABULA
- Miller & Anderson
- Topky Bay
- CITY
- Jennison Hardware Co.
- CLEVELAND
- The Wm. Bauer Co.
- Haushier & Sons Co.
- DETROIT
- Fred Marriott
- DULUTH
- M. M. Gasser Co.
- Constans-Duluth Marine
- Inc.
- ERIE
- Carl H. Meier
- ALBION
- Harbor
- Hills Hardware & Pimg.
- Co.
- GRAND RIVER
- Valley Camp Stores Co.
- VALLEY CAMP STORES CO.
- RUSSELL & WATSON, Inc.
- BUFFALO, N. Y.

- HURON
- Henes & Whitt
- ORAIN
- Lorain Hardware Co.
- MANITOWOC
- Wm. Rathnack & Sons
- Co.
- MILWAUKEE
- H. Johnson Co.
- SANDUSKY
- Camp Street Market
- SHEBOYGAN
- H. C. Prange Co.
- SUPERIOR
- Berthamer, Inc.
- SOUTH BEND
- Jas. A. TOLLEDO
- Co.
- H. F. Beagle Meat Co.
- Edgewater Market
- Hardy & Dischinger
- Co.
- Valley Camp Stores Co.

OWNERS, MASTERS AND ENGINEERS
OF LAKE VESSELS

Unless otherwise designated, all vessels are steamers. M. V. denotes motor vessels. Figures after bulk freighters are, in order, keel length, beam, depth, hatches, and gross tons carrying capacity at 20-foot draft. Tonnage figures for other vessels are their capacity loading, in gross tons. In personnel, name of captain is given first, and chief engineer second. Asterisk indicates carryover of 1939 appointments, no response having been received to questionnaire for 1940.

- | | | |
|---|---|-------------------|
| | Captain | Chief Engineer |
| 1 | Abitibi Navigation Co. Ltd., P. O. Box 308 Terminal A., Toronto, Ont. | |
| | Wahcondah | E. A. Booth |
| 2 | Abitibi Power & Paper Co., Ltd., P. O. Box 308 Terminal A., Toronto, Ont. | |
| | G. T. Clarkson, Receiver and Manager | |

- Abitibi (tug)
- Commodore (tug)
- Gargantua (tug)
- G. R. Gray (tug)
- Horton (tug)
- Kam (tug)
- Magpie (tug)
- Reliance (tug)

	Captain	Chief Engineer
3 Algoma Central Steamship Lines, Sault Ste. Marie, Ont. (Operator)		
	Algoma Central & Hudson Bay Railway Co., Owner	
Algocen	504-54-30 9,500	M. A. Livingston A. M. Macinnes
Algorail	346-48-28 5,500	James Sykes S. Wheeler
Algosoos	346-48-28 5,500	A. H. Blackwell D. A. McConnell
Algosteel	480-52-30 8,500	M. A. Loughheed Bert Myler

Allied Oil Transport Co. (See Fleet No. 48)

4 Allouez Marine Supply Co., 3815 Itasca St., Superior, Wis.		
G. L. Bug (tug)	no appointments	
G. L. Hallam Bros. (tug)	no appointments	
5 American Construction Co., 515 Marion Bldg., Cleveland (Operator)		
	American Construction Co., Owner	
Atlas (tug)	Patrick Chambers ...	Leonard R. Reilly
Aubrey (tug)	George T. LaLonde ...	Raymond Kane

6 American Ship Building Co., The, Foot of W. 54th st., N. W., Cleveland (Owner and Operator)		
	No appointments made.	
At Buffalo: Repair steamer Service; steam tug Edward E.; steam launches Amer-ship and H. G. Smith; motor launch Hustler; derrick scow No. 8.		
At Chicago: Repair launches Chicago Ship No. 1 and C. S. B. 2.		
At Cleveland: Repair steamer The Craftsman; repair launch Amership; motor launches		

Captain	Chief Engineer
---------	----------------

Cleveland Ship and Globe Ship; tug T. L. Durocher.
 At Lorain: Motor launch Lorain Ship.
 At Superior: Repair steamer Robert J. Close; repair launch Superior Ship.
 At Toledo: Motor launch Sid, Jr.; repair scow American.

American Steamship Co. (See Fleet No. 16)

7 Ann Arbor Railroad Co., Frankfort, Mich. (Operator)		
	Ann Arbor Railroad Co., Toledo, O., Owner	
	O. T. Larsen, Marine Superintendent	
	(All vessels are Car Ferries)	
Ann Arbor No. 3	A. B. Jacobsen	Emil Stolson
Ann Arbor No. 5	A. Straubel	S. Arnerson
Ann Arbor No. 6	M. G. Roon	M. Dahlgren
Ann Arbor No. 7	B. H. Hanson	S. J. Hawkins
Wabash	A. L. Larson	George Johnson

8 Arnold Transit Co., Mackinac Island, Mich. (Owner and Operator)		
Elva	not in commission	
D. P. Perry	Edw. J. LaDuhn	
Mackinac Islander	Hillard Bentzen	John Leahy

9 Ashley & Dustin Steamer Line, 170 First st., Detroit (Owner and Operator)		
Put-in-Bay (passenger)	John N. Peterson	Edw. Gelnow
	Automotive Trades Steamship Co. (See Fleet No. 63)	

	Captain	Chief Engineer
10	Barnett & Record Co., 429 North Fifth st., Superior, Wis. (Owner and Operator)	
	D. J. McKinnon, Agent	
America (derrick scow)	Emil Carlsen	Adolph Nelson
John E. Meyer (tug)	Einar Miller	Henry Oestreich
11	Bay Quinte Transportation Co. Ltd., Picton, Ont. (Owner and Operator)	
	C. D. Wilson, Port Captain	
Glen Allen	Ben Bowen	John G. Reid
12	Bay Transportation Co., Sandusky, O. (Owner and Operator)	
	A. Kuebler Jr., President and General Manager	
G. A. Boeckling	Otto Wyss	George Alheit
America (gas, screw)	Bert Brown	Bert Brown
13	Becker, Frank, Towing Co., 4103 W. Jefferson ave., Detroit (Owner and Operator)	
B. H. Becker (motor tug)	Ivan Brussick	
G. F. Becker (tug)	F. Becker	
14	Bethlehem Transportation Corp., 2600 Terminal Tower, Cleveland (Operator)	
	F. C. Oakes, Manager; Albert H. Amhaus, Fleet Engineer	
	Bethlehem Steel Co. (owner)	
Bethlehem	580-60-32-12 12,100	M. Anderson H. T. Stearns
Cambria	504-54-30-12 9,400	W. J. Colson N. A. Perry
Lackawanna	530-56-31-12 10,200	A. Andrews R. P. Frye
Lebanon	530-56-31-12 10,200	V. L. Hosner W. J. Cunningham
Lehigh	525-55-31-12 9,800	Chas. Lindsay C. Ellis Pletcher

	Captain	Chief Engineer
Maryland	530-56-31-12 10,200	W. R. Jerome E. H. Parry
Saucon	549-56-31-12 10,500	F. DesJardins Fred Beebe
Steelton	504-54-30-12 9,400	B. M. Landfair F. E. Beger
	Cambria Steamship Co. (owner)	
Daniel J. Morrell	580-58-32-24 11,300	J. B. Sullivan Stanley Hopton
Edward Y. Townsend	580-58-32-24 11,300	Edward P. Fitch George Pennycook
	Franklin Steamship Co. (owner)	
Edward J. Berwind	586-62-32-24 12,400	Fred Sturtevant Val Kraemer
	Mahoning Steamship Co. (owner)	
William H. Donner	504-54-30-24 9,400	John Ward Thomas Griffiths
Leonard C. Hanna	504-54-30-12 9,400	G. O. Dalrymple J. A. McCarron
Powell Stackhouse	504-54-30-12 9,400	Wilfred Couture S. K. Ramberg
	Bison Steamship Corp. (See Fleet No. 16)	
15	Bob-Lo Excursion Co., foot of Woodward ave., Detroit (Owner and Operator)	
	(All vessels are ferries)	
Britannia	not in operation	
Cadillac	not in operation	
Columbia	John J. Denstaedt	Edward Seymour
LaSalle	not in operation	
Ste. Claire	Charles H. Anderson	Donald Reid
16	Boland & Cornelius, Marine Trust Bldg., Buffalo (Operator)	
	Ray T. Carter, Marine Superintendent	
	American Steamship Co. (owner)	
Achilles	514-65-39'6"	F. H. Delano Chas. Holmgren

				Captain	Chief Engineer
John J. Boland	480-52-30	12	8,600	Martin Walle	John Berg
(nee U. S. Gypsum)					
John J. Boland Jr.	356-50-28	12	5,700	Jas. Heffernan	Frank McCarthy
Consumers Power	504-56-30	12		Patrick Healy	Lloyd Averill
Adam E. Cornelius	420-52-28	24	7,200	Jacob Jacobson	Sam Connors
Adam E. Cornelius Jr.	418-48-28	24	6,500	James Herbert	Louis Bundschuh
Diamond Alkali	580-60-32	12		Geo. Anderson	Julius Lawrence
(nee Frank H. Goodyear)				W. T. Black	J. T. Nicholson
Dow Chemical	504-56-30	12		Gustave Carlson	John Cunningham
(nee Diamond Alkali)				John Montgomery	Dan McCarthy
Jason	514-65-39'6"			Patrick Williamson	Tarsten Cand
Norman J. Kopmeier	504-54-30	12		Chas. McNally	Dan Darcy
(nee Dow Chemical)				Lawrence Goudie	Percy Worden
Geo. F. Rand	532-58-32	12		Even Solberg	Charles Dowd
J. F. Schoellkopf Jr.	532-56-30	12			
Edmund P. Smith	480-54-30	24	8,700		
(nee Harry Yates)					
Standard Portland Cement	444-56-28	24	8,000		
Thunder Bay Quarries	504-51-30	24			
(nee John J. Boland)					

				Captain	Chief Engineer
U. S. Gypsum	504-56-30	12		Harvey Stewart	Joseph Miller
(nee Thunder Bay Quarries)				James Healy	Harold Goodwin
Harry Yates	444-56-28	24	8,000	Bison Steamship Corp. (owner)	
(nee Theodore H. Wickwire)				Norman Anchor	C. W. Hollenbec
John Gehm	251-44-21			H. L. Beauvais	Thomas Burke
John J. O'Hagan	251-44-21			Lake Chelan Steamship Corp. (owner)	
Lake Chelan	252-44-18			Wm. Russell	Frank Wetzel
17	Booth Fisheries Corp., 309 West Jackson st., Chicago			(Owner and Operator)	
Nashville (tug)				not in operation	
New York (tug)				H. Johnson	E. J. Fitzpatrick
18	Boyd, Harry H., 651 West Tenth st. Erie, Pa.			Harry H. Boyd	
Liberty (tug)				Bradley Transportation Co., Rogers City, Mich. (Owner and Operator)	
19	(All vessels are self-unloaders)				
Carl D. Bradley	615-65-33	12,000		F. F. Pearse	John S. Sparre
Calcite	416-54-29	6,000		Donald Nauts	Chas. Frederick
John G. Munson	530-60-32	9,500		C. A. Thorsen	Arthur Urdal
T. W. Robinson	566-60-32	10,000		Crossley McQuinn	Guy LaBounty
B. H. Taylor	530-60-32	9,500		Theo. Dahlburg	Thos. Suttle
W. F. White	530-60-31	9,500		M. R. MacLean	J. A. Anderson
Branch Lines Ltd.				(See Fleet No. 141)	

	Captain	Chief Engineer
20	British-American Oil Co. Ltd., Royal Bank Bldg., King and Yonge Sts., Toronto, Ont. (Operator)	
	W. G. Smith, Superintendent	
Britamoil	W. F. Garrett	Geo. Bragg
Britamolene	B. J. Zink	W. D. McCann
Britamlube	D. M. Murphy	John Scott
Britamoco	J. R. Anderson	J. Sweeting
Britamette (m. v.)	C. O. Sensabaugh	F. H. Brickenden
21	Brown & Co., Chamber of Commerce Bldg., Buffalo (Operator)	
	Brown Steamship Co. (owner)	
J. J. H. Brown	432-52-28-12 7,500	H. D. Sellon
Jas. E. McAlpine	432-52-28-12 7,500	R. H. Russell
		Leroy Wilcox Ray Hanel
22	Brown, Worthy R. & Son, Inc., Lakeside, O. (Owner and Operator)	
	William R. Brown, Port Captain	
Lakeside III (tug)		Jack Metzgo
23	Bryson, C. W., 950 Rockefeller Bldg., Cleveland (Operator)	
	Copper Steamship Co. (owner)	
Marita	172-30-15 650	W. A. De Land
		J. L. Scott
	India Navigation Co. (owner)	
India (barge)	210-32-14 1,200	R. E. Moyer
24	Buckeye Steamship Co., 1508 Rockefeller Bldg., Cleveland (Owner and Operator)	
	John T. Hutchinson, President	
Sir. Wm. Fairbairn. .414-46-28	24 6,100	A. C. McLean
		E. D. Butler

	Captain	Chief Engineer
Harry W. Hosford .506-50-28	24 7,700	Harold Jacobsen
Macbeth	376-46-26 24 5,400	Martin Olsen
Maia (barge)	376-48-26 24 6,200	Peter E. Sparre
Magna (barge).....	352-44-26 24 5,600	Mitchell Johnston
Mariposa	330-45-25 24 4,000	John Cameron
Maritana	320-45-25 24 3,900	L. R. Russell
Marsala	436-50-28.6-24 8,000	A. G. Regan
Alex McDougall	413-50-27 24 6,300	Thomas Hedglin
Geo. Stephenson	408-48-28 24 6,100	C. Butler
Tristan	253-43-24 2,850	Lewis Barry
Tyrone (barge)	301-41-24 24 4,000	T. K. Woodward
Andrew S. Upson .380-52-28	12 6,600	W. Thomas
		Gus Clausson
		Otto B. Nordstrom
		Oakley Keller
		Leif Jacobsen
	 A. V. Anderson
		Arthur Kristiansen
		John Eskelin
25	Buffalo, City of, Department of Fire	
	W. R. Castimore, Commissioner of Fire	
W. S. Grattan (steam fire tug)		Patrick J. Mullane.....
		John J. Dee
26	Buffalo Gravel Corp., 19 Hudson st., Buffalo (Owner and Operator)	
	Charles F. Strasmer Jr., General Manager	
Weston M. Carroll		Chas. E. Nash
Crescent		Adelbert Hayes
Hyman		not in commission
Lakewood		not in commission
Victoria		not in commission
27	Burke Towing & Salvage Co. Ltd., Midland, Ont. (Owner and Operator)	
	Edward F. Burke, Captain	
Allan No. 2 (barge)		No appointments

Fanny Arnold (tug)
 Salvus (barge)

Captain **Chief Engineer**
 Charles Malcolm A. J. Ferguson
 J. W. Rutherford J. P. Horsfall

Cambria Steamship Co. (See Fleet No. 14)

28 **Canada Atlantic Transit Co. of U. S., 384 St. James St., Montreal, Que.**
(Owner and Operator)

R. B. Teakle, Manager
 Canatco 259-44-26 2,100 T. C. Anderson J. W. Crate
 Dalwarnic 261-44-26 2,100 D. F. Cornett W. R. Jones
 Kearsarge 350-44-27 3,000
 Arthur Orr 353-41-25 2,600 J. A. McLean A. W. H. Jensen

29 **Canada Cement Transport Ltd., Canada Cement Bldg., Montreal, Que.**
(Owner and Operator)

(Both vessels are self-unloaders)
 Bulkarier 253-43-25 E. L. Jenkins Wilson L. Emrick
 Cementkarrier (el. m. v.) 253-43-20 E. Knudsen M. E. Fowler

30 **Canada Steamship Lines Ltd., P. O. Box 100, Montreal, Que.**
(Owner and Operator)

H. McClymont, Operating Manager
 Upper Lake Bulk Freighters
 Ashcroft 546-60-28 9,250 J. F. Davis H. Young
 Collingwood 386-50-23 5,410 T. J. Carson M. Dedman
 Donnacona 604-59-28 10,580 James Reoch C. Leriche
 Emperor 525-56-27 7,900 J. A. Brown I. J. Boynton
 Gleneagles 582-60-28 10,000 D. W. Burke G. Price

54

Goderich 480-54-26 7,500
 Hagerty 536-58-27 8,800
 Lemoyne 621-70-25 12,600
 Prescott 494-50-24 7,500
 Stadacona 582-60-28 10,100
 Westmount 536-58-27 8,900

Captain **Chief Engineer**
 J. J. Dube P. Eagles
 E. Walkinshaw J. M. Kennedy
 C. E. Robinson D. A. Sinclair
 R. Burke R. Sinclair
 J. H. Hudson E. Henry
 W. H. Montgomery W. H. Taylor

Upper Lake Package Freighters
 Huronic
 Renvoyle

T. H. Johnston H. H. Moore
 T. S. Patterson H. Myler

Lower Lake Package Freighters
 Beaverton
 Calgarian
 Canadian
 City of Hamilton
 City of Kingston
 City of Montreal
 City of Toronto
 City of Windsor
 Edmonton
 Fernic
 Glenross
 Kenora
 Lethbridge
 Saskatoon
 Selkirk
 Weyburn

Lower Lake Package Freighters
 E. J. Shannon D. J. Leslie
 A. Allen J. Brooks
 E. Corcoran T. Nichols
 J. A. Lepine M. J. O'Brien
 J. A. Ferguson M. J. Sherman
 N. Legault H. Paus
 M. J. Corkey A. P. Norris
 A. Francis L. E. Spencer
 Roy Anderson A. J. O'Brien
 Alex Wilson J. R. Naudie
 A. J. Galloway W. L. Hurder
 E. F. Poidevin Jas. Neilson
 W. J. Holler R. W. Howes
 T. R. McLeod F. Lumley
 E. F. Raeburn J. A. MacDonald
 H. R. Baxter R. H. Isbester

55

	Captain	Chief Engineer
Winnipeg	H. A. Patterson	Jas. Kirk
Acadian	Lower Lake Bulk Freighters	
Anticosti	L. Prgent	J. J. Smith
Barrie	L. Patenaude	R. M. Bonnell
Donald Stewart	H. Laliberte	F. B. Bonnell
Dundas	V. Chartier	M. Manner
Elgin	E. Poirier	D. Pruder
Fairmount	A. Bonin	J. Dyson
Grainmotor (m. v.)	G. E. Stephens	W. E. Downing
Hastings	G. C. Kirk	E. C. Fleming
Kinmount	J. G. R. Toupin	G. W. Clark
Lanark	G. Lefebvre	A. J. McChristie
Lennox	E. A. George	J. Hamelin
Mapleheath	D. Nolan	D. F. Lockwood
Mapleton	H. A. Leaney	P. Rutherford
Meaford	C. E. Scott	M. Parry
Norfolk	J. R. Lamarre	A. Meikle
Penetang	W. J. Hore	W. J. McWilliam
Simcoe	E. Griesbach	J. Bennett
Starmount	H. Clarke	M. Rankin
	J. W. Scarrow	J. M. Clarke
	Self Unloaders	
Coalhaven	L. G. Bird	A. V. Smith
Collier	T. W. Adam	J. J. Dove
Glenelg	N. J. Reoch	J. Douglas
Midland Prince	P. Beatty	T. W. Verity

25

	Captain	Chief Engineer
Osler	R. Belcher	J. B. Polding
Quebec	Eastern Division Passenger Steamers	
Rapids Prince	C. H. Burch	N. Peloquin
Richelieu	P. J. Cherry	E. Lenneville
Saguenay	C. A. Bodensieck	G. Bourret
St. Lawrence	E. T. Sismard	L. Plante
Tadoussac	A. Delage	O. Peloquin
	W. Gagne	N. Crepeau
Cayuga	Western Division Passenger Steamers	
Kingston	H. Webster	J. F. Henry
	B. A. Bongard	G. W. MacDonald
Hamonic	Northern Division Passenger Steamers	
Noronc	Wm. Taylor	J. G. McHattie
	H. J. Aitken	J. W. McLeod
Elmbay	Tree Line Navigation Co. Ltd.	
Sprucebay	D. H. Porter	J. B. Marchand
Teakbay	J. R. Montgomery	J. A. Lentz
	P. Morinville	R. Gibson

27

31 **Canadian Dredge & Dock Co., Ltd., 302 Harbour Commission Bldg., Toronto, Ont. (Owner and Operator)**
 A. M. German, General Manager
 (All are tugs)

J. A. Cornett	Wilfred J. Hand	Forrest Howson
Frank Dixon	F. Scott	R. W. Chetley

	Captain	Chief Engineer
A. M. Gorman	S. B. English.....	George Young
F. W. Grant	J. H. Gillem.....	Mat. Ryckman
Hector	not in commission	
A. M. Macaulay	Wm. Oates.....	Fred Chester
A. W. Rogers	H. Gehl.....	Joseph Hamley

32 **Canadian Government, Department of Transport, Ottawa, Ont.**

R. K. Smith, Director of Marine Service
Marine Service

Out of Prescott:
Grenville

Murray Barry.....G. W. Smallwood

Out of Montreal:

Argenteuil

Thomas Weir.....Joseph Ranger

Safeguarder

J. E. Aussant.....G. Robidoux

Vercheres

V. Laforest.....Joseph Joly

Out of Parry Sound:

St. Heliers

J. Ouellette.....Roy W. Stewart

J. E. St. Laurent, Chief Engineer

River St. Lawrence Ship Channel Service

Out of Sorel:

Berthier

D. Beaudet.....L. Salvall

Frontenac

U. Blais.....J. Peloquin

Jalobert

F. Gagnon.....A. Godin

	Captain	Chief Engineer
E. B. Jost, Gen. Superintendent of Canals Canal Service (All are tugs)		

At Montreal:

Lachine canal

J. L. M. Gagne.....J. A. Laliberte

Lavaltrie

L. Lacouture.....J. B. Ducap

Welland

At Carillon canal:

Carillon

H. Lapierre

At Chambly canal:

Chambly

Gaston Cayer.....A. Garceau

At Cascades Point:

Soulanges

N. Lafrance

At Cornwall:

W. A. Bowden

C. Hart.....F. Moyle

At Port Weller:

Lavoilette

J. J. Conlon

At Sault Ste. Marie:

Batchawana

G. E. Coe

At Peterborough:

Bessie Butler

H. Young.....W. Gillman

Bob Hall

J. A. Dorris.....G. Noyes

Katchewana

W. Copperthwaite.....R. Brotherstone

At Ottawa:

Loretta

M. Egan.....O. Seguin

Agnes P.

B. Ranger.....J. Beaton

21
26

23

Captain **Chief Engineer**

**33 Canadian International Paper Co., Sun Life Bldg., Dominion Square,
Montreal, Que. (Owner and Operator)**

(All are tugs)

Aid	E. Poirier.....	J. Roy
Alligator Boyle	E. Kelly.....	E. Mathurin
Alligator Eadie	W. Marchand.....	Alexander Tessier
Alligator* Quaille	A. Robitaille.....	John Jones
Alligator Serpent	W. Crites.....	T. Young
Atacas	P. Lemay.....	O. Poirier
Bush	O. Gauthier.....	R. Gauthier
Chelsea	Angus Allard.....	Lucien Cyr
T. E. Draper		
J. A. H. Henderson		
Laracina	E. Garvais.....	E. Paulette
No. 26	Albert Nadeau.....	Henry Bolster
G. H. Nottter	R. Pilon.....	L. Legault
Pickanock	W. Pilon.....	C. Cooke
Pythonga	Charles McIntosh.....	L. Alie
Templeton	Lambert Pilon.....	G. Ross
Wapus	W. Hebert.....	P. Hebert
Wilda		

**34 Canadian Lake Carriers, Ltd., 312 Power Bldg., Montreal, Que.
(Owner and Operator)**

Capt. L. Beaupre, Marine Superintendent

Surewater	W. N. Williams.....	S. Heather
-----------------	---------------------	------------

Captain **Chief Engineer**

Trenora	P. V. Mahoney.....	R. Aschah
Trevisa	E. M. Walsh.....	George Clark

35 Canadian National Railways, Windsor, Ont. (Owner and Operator)

J. F. Pringle, General Superintendent

Huron (car ferry)	not in commission	
C. F. Lansdowne (car ferry)	A. Baillargeon.....	William Belsom

(See also Fleet No. 171)

**36 Canadian Pacific Car & Passenger Transfer Co., Ltd., Prescott, Ont.
(Owner and Operator)**

Prescotont (tug)	A. R. Henry.....	A. Stillson
Ogdensburg (car ferry)	A. R. Henry.....	A. Stillson

37 Canadian Pacific Railway Co., Montreal, Que. (Owner and Operator)

A. Gallagher, Superintendent, Great Lakes Steamships, Port McNicoll, Ont.

Alberta	Jos. Bishop.....	D. W. Ramsay
Assiniboia	F. S. Middleton.....	W. S. Struthers
Athabasca	F. E. Logan.....	Geo. S. Rae
Keewatin	J. P. Pearson.....	Geo. D. Adam
Manitoba	J. R. Stewart.....	W. F. Irvine

38 Cargo Carriers Inc., 2809 Field Bldg., Chicago (Owner and Operator)

W. D. Rees	396-45-28	5,400
------------------	-----------	-------

38-A Cement Transit Co., 1000 Midland Bldg., Cleveland (Owner and Operator)

Daniel McCool (m. v.)	144-33-15	W. J. Petrosky.....	Ben Hanson
-----------------------------	-----------	---------------------	------------

Captain **Chief Engineer**

39 Chatham Dredging & General Contracting Co., Chatham, Ont.
(Owner and Operator)

Aurelia (tug)	
Loo Loo (derrick scow)	
Wm. E. Rooney (tug)	
St. Clair (dipper dredge)	
John R. Stover (tug)	Charles Bergie..... P. St. Germain

40 Chicago, Duluth & Georgian Bay Transit Co., 2270 National Bank Bldg., Detroit (Owner and Operator)

Alabama (passenger)	Morgan Edgecomb..... G. E. Suckow
North American (passenger)	Richard A. Harreutt..... C. T. Vermurlen
South American (passenger)	William T. Bright..... H. J. Wilson

41 Chicago Fire Department, City Hall, Chicago
(All are fireboats)

Fred A. Busse	William McMahon..... George McClane
	Joseph Wright..... Charles Dorow
Joseph Medill	Jerry Carter..... Leslie Papineau
 Edw. Sheridan
Graeme Stewart	not in commission

42 Chicago-Milwaukee Steamship Line, Navy Pier, Chicago (Operator)
Edward E. Taylor, Manager

City of Grand Rapids (passenger)	O. C. Bjerk..... John Golden
--	------------------------------



Captain **Chief Engineer**

43 Chicago Roosevelt Steamship Co., 131 E. Wacker drive, Chicago
(Owner and Operator)

J. E. Thiel, Vice President and General Manager	
Theodore Roosevelt (passenger)	H. J. Delatre..... Joseph Peroutka

44 Christiansen, H., & Sons, Duluth (Owner and Operator)
O. E. Christiansen, Port Captain

Winyah	Ole Berg..... Roy Oss
--------------	-----------------------

City of Toronto (See Fleets Nos. 230 and 231)

45 Cleveland & Buffalo Transit Co. of Delaware, East 9th st. pier, Cleveland
(Owner)

J. H. McCallum, Purchasing Agent	
City of Erie	not in commission
Goodtime	not in commission

46 Cleveland & Buffalo Transit Co. of Ill., East 9th st. pier, Cleveland (Operator)
Cleveland & Buffalo Transit Co. of Del. (owner)

J. H. McCallum, Purchasing Agent	
Seeandbee	Wm. Robinson

47 Cleveland-Cliffs Iron Co., 1460 Union Commerce Bldg., Cleveland (Operator)
Cleveland-Cliffs Steamship Co. (owner)

A. E. R. Schneider, Manager Marine Department	
C. O. Rydholm, Fleet Captain; James H. Durkin, Fleet Engineer	
Cadillac	380-50-28-24 6,200 D. Jackson..... Chas. Hanlon
Frontenac	580-60-32-24 11,700 W. T. Mooney..... J. F. Gordon

		Captain	Chief Engineer
Grand Island	480-52-30-24	8,500	R. E. Hayward.....Matt Kuntz
Hennepin	504-54-30-12	9,200	M. J. Brown.....F. Sheppard
Ishpeming	530-56-31-12	10,000	D. J. Hystop.....M. Thompson
Joliet	504-54-30-24	9,200	H. Wendorf.....A. J. Cameron
LaSalle	530-56-31-12	10,000	F. P. Bamford.....Jos. Rose
Marquette	420-52-28-24	7,000	J. G. Olsen.....Stan. Kouchnerkavich
Wm. G. Mather	592-62-32-24	12,200	C. A. Anderson.....W. H. Furey
Michigan	530-56-31-12	10,000	F. W. Watson.....Chas. Modjeski
Munising	380-50-28-24	6,300	R. H. Edgerton.....Steve Kouchnerkavich
Negaunee	380-52-28-24	6,200	F. A. Brytz.....Fred Gregory
Pioneer	504-54-31-12	9,200	C. N. Bedell.....A. E. Telliard
Pontiac	580-60-32-12	11,700	H. A. Murphy.....P. J. Stipek
J. H. Sheadle	513-60-31-12	10,300	A. J. Rathbun.....S. R. Shipman
Fontana Steamship Co. (owner)			
Colonel	356-50-28-24	5,700	H. J. Tucker.....E. C. Ahrens
Yosemite	356-50-28-24	5,700	J. M. Campbell.....John Volanski
Presque Isle Transportation Co. (owner)			
Angeline	414-50-28-24	6,800	Geo. Russell.....Wm. Riordan
Presque Isle	406-50-28-24	6,500	Fred Riedy.....R. J. Douglas
Peter White	504-54-30-12	9,200	W. F. Amsbary.....P. J. O'Rourke
Schneider Transportation Co. (owner)			
Cletus Schneider	360-50-28-24	5,900	J. A. McDermid.....Geo. Nantau
Pam Schneider	360-50-28-24	5,900	C. R. Gallagher.....Wm. Cooper
Dolores Steamship Co. (owner)			
W. M. Connelly	346-48-...-24	5,300	

64

		Captain	Chief Engineer
48	Cleveland Tankers, Inc., Standard Bldg., Cleveland (Operator) Allied Oil Transport Co., Inc. (owner)		
Comet		F. H. Robbins.....	William Klaas
Crudoil		J. B. Oliver.....	Walter Carlson
General Markham		M. B. Shambleau.....	Calvin Radlike
Mercury (m. v.)		R. Robbins.....	B. H. Carley
Zephyr (m. v.)		L. U. Picard.....	E. LaMoria
49	Clow & Nicholson Transportation Co., Duluth (Owner and Operator)		
Montauk		B. J. Roberts.....	J. A. Weber
50	Coal Carriers Corp. Ltd., 12 King st. East, Brockville, Ont. (Owner and Operator) W. B. Reynolds, Managing Director		
Coalfax		R. A. Wright.....	Bernard Langan
Colonial Steamships Ltd., (See Fleet No. 211)			
Columbia Transportation Co. (See Fleet No. 178)			
51	Connelly Bros., 165 Ohio st., Buffalo (Owner and Operator)		
Connelly Bros. No. 1 (tug)			Robert Sors
52	Consolidated Dredging Ltd., 900 Victoria Bldg., Ottawa, Ont. (Owner and Operator) Appointments not made.		
Thomas Fisher (tug)			
Minnie (tug)			
J. D. Morrison (tug)			
Reginald (tug)			

65

Captain

Chief Engineer

Roger M. (tug)
 E. C. Whalen (tug)

Consolidated Steamship Co. (See Fleet No. 229)

53 **Consolidated Water Power & Paper Co., Ashland Div., Port Arthur, Ont. (Operator)**

Consolidated Water Power & Paper Co., Wisconsin Rapids, Wis. (owner)
 Butterfield (tug) Thomas Mackie

(See also fleet No. 170)

54 **Constans-Duluth Marine Co., Duluth (Owner and Operator)**
 N. M. Constans, President

Simon Clark (tug) Emil Gustafson

Constans (tug)

Esther (tug)

55 **Construction Aggregates Co., 33 No. La Salle st., Chicago (Owner and Operator)**

Robt. E. Johnston (tug) William Dawes Robert Purcell
 Willard L. (tug) C. Purduin Ed Walsh
 Midwest Vessel Corp., Cleveland (owner)
 Sandcraft John Gusland A. Wirth
 Sandmaster (m. v.) Alf. Jonassen R. W. Miller
 J. R. Sensibar (el. m. v.)

Continental Steamship Co. (See Fleet No. 229)

Copper Steamship Co. (See Fleet No. 23)

Captain

Chief Engineer

56* **Couture, Russel T., Fisheries, Ontonagon, Mich. (Owner and Operator)**
 Chattanooga Russel T. Couture Raymond Jenkins

57* ***Cox, Charles W., Ltd., Port Arthur, Ont.**
 Bayfield (tug)

58 **Crystal Beach Transit Co. Inc., Foot of Commercial st., Buffalo (Owner and Operator)**

George C. Hall, President; Harry S. Hall, General Manager
 Canadiana (passenger) William Malloy James Linton

59 **Cullnan & Walsh, 1909 Newport ave., Chicago (Owner and Operator)**
 P. J. Cullnan, Port Captain

Fred A. Britten (tug) P. J. Cullnan J. Hendrixson
 Josephine (tug) P. J. Cullnan, Jr. P. W. Walsh

Cyclo-Brave Ltd. (See Fleet No. 148)

Cyclo-Chief Ltd. (See Fleet No. 148)

Cyclo-Warrior Ltd. (See Fleet No. 148)

Dalhousie Navigation Co. (See Fleet No. 171)

60 **Daryaw, Capt. Henry, 30 Rideau st., Kingston, Ont. (Owner and Operator)**
 Henry C. Daryaw Robert Siddell, Captain Benoit Garrah
 M. Sicken not in commission

61 **Davidson, James E., Foot of Randolph st., Bay City, Mich. (Operator)**
 Salzburg Transportation Co. (owner)

Grampian (schooner) not in commission

59

67

Captain **Chief Engineer**

62 **Detroit, City of, Fire Department, 3434 Russell st., Detroit**
(Owner and Operator)

Edward C. Rumsey, Port Engineer

John Kendall (fire tug) Gilbert Townsend..... Lloyd Bargey
 John McIntosh..... Percy Chamberlin

63 **Detroit & Cleveland Navigation Co., Wayne st., Detroit (Operator)**

James T. McMillan, President
 Detroit & Cleveland Navigation Co. (owner)

(The following six are combination passenger and freight vessels)

City of Cleveland III	L. C. Mantel	Albert Murphy
City of Detroit III	Wm. McDonald	Otto Kuck
Greater Buffalo	L. C. De Nike.....	M. E. Sicklesteel
Greater Detroit	J. A. Hyatt	David Wilson
Eastern States	Donald MacRae.....	W. H. Traxler
Western States	R. J. Kiessling	J. L. Nattress

Wm. F. Fitch Detroit & Cleveland Steamship Co. (owner)
 346-48-28 Elon A. Cahours..... J. H. Meno

George W. Mead..... T. J. McCarthy Steamship Co. (owner)
 387-50-29 T. R. Miller..... Herbert Kline

George H. Ingalls..... Automotive Trades Steamship Co. (owner)
 430-50-29 W. M. Whitney..... John Koyen
 Morris S. Tremaine..... 430-50-29 Jas. A. Patterson..... John D. Bowe

Detroit & Cleveland Steamship Co. (See Fleet No. 63)

Captain **Chief Engineer**

64 **Detroit & Georgian Bay Navigation Co. Ltd. (Seaway Lines)**
Foot of Woodward avenue, Detroit (Operator)

Georgian (passenger) Ernest Long..... T. Dennison
 Virginia (passenger) J. H. Clarke..... G. Semsky

65 **Detroit Tug Line, 8145 Medina st., Detroit (Owner and Operator)**

R. G. Candler, Manager

B. E. West (tug) B. E. West..... Paul Gagne

66 **Dolomite 3 Corp., Rochester, N. Y. (Owner and Operator)**

Petroheat
 (nee Dolomite 3)

Dolores Steamship Co. (See Fleet No. 47)

67 **Dominion Tankers Ltd., Victory Bldg., Toronto, Ont. (Operator)**

J. H. Solery, Manager

Peter G. Campbell (m. v.) W. K. S. Hines..... S. Fratson
 John A. McDougald F. F. Foote..... W. J. Wells

68 **Dominion Transportation Co. Ltd., Owen Sound, Ont. (Owner and Operator)**

Ivor Wagner, General Manager

Caribou A. A. Batten..... J. Glover
 Manitou R. Morrison..... W. Morrison
 (Operating joint sailings with Owen Sound Transportation Co. Ltd. See Fleet No. 182)

(See also Fleet No. 182)

	Captain	Chief Engineer
69 Driftwood Lands & Timber Ltd., 510 Queen st., East, Sault Ste. Marie, Ont. (Owner and Operator)		
George Hindman, Port Captain		
Delkote (barge)	George Henderson	Wm. Gilbert
Mitschfibre (barge)	John McKay	Wm. Baker
Sulphite (tug)	Charles Lynn	Charles Randle
		Haig Glover
Swederope (barge) (nee Sidney G. Thomas)	Percy Steep	Wm. Dickson

70 Duluth, Missabe & Iron Range Railway Edna G. (tug)	Co., Duluth (Owner and Operator) H. F. Brower	Fabien Poulin
	H. Johnson	G. DaMour
	J. Pinney	J. LeClair

71 Duluth Steamship Co. (See Fleet No. 229) Duluth (Owner and Operator)		
Gladiator (tug)	Einer Miller	Archie Scott
Warrior (tug)		

72 Dunbar & Sullivan Dredging Co., 2312 Buhl Bldg., Detroit (Owner and Operator)		
R. H. Goode (tug)	Ed. Bebeau	Charles Anderson
Wm. R. Pantou (tug)		A. Miller
(nee Samuel J. Dark)		
Sachem (tug)	J. H. McLean	James Bainbridge
Shaughraun (tug)	F. Bertrand	Ed. Thrombley
Shaun Rhue (tug)		Wm. Shewfelt

	Captain	Chief Engineer
--	---------	----------------

73 Eastern Steamship Co. (See Fleet No. 101) Eeorse Translt Co. (See Fleet No. 172) Eldridge & Robinson, Auburn, N. Y. (Owner and Operator)		
Empire (diesel tug)	Roy Carter	Warren Smith

74 Emery, W. L., foot of Mt. Elliott ave., Detroit (Owner and Operator) W. C. Schippert, Manager		
John R. Emery	Delos Laffrey	Leon Bourlier

75 England Towing Co., Duluth (Owner and Operator) M. A. Poliquin, Manager		
Adele (barge)	William Lourence	
A. W. Colton (tug)	N. F. Thompson	Jack Hanson
Columbia (tug)	E. D. Moe	Simon Becker
Faith (barge)	David Collette	
Frank Neston (tug)	F. E. Gregorie	Clarence Chappe

76 Erie Isles Ferry Co., Put-in-Bay, O. (Owner and Operator) Capt. A. J. Stoll, Manager		
Erie Isles	A. J. Stoll	Oscar Bertch

77 Erie & St. Lawrence Corp., 19 Rector st., New York (Owner and Operator) Julius H. Barnes, President		
Andrew M. Barnes, (m.v.)	Harry E. Freeman	Henry Mikkelsen
Richard J. Barnes (m.v.)	Peter Drawneek	Charles E. Hansen
Alden Barnes Fiertz (m.v.)	Fred Waldman	Elmer Birdsall
Robert Barnes Fiertz (m.v.)	Alex. J. Prince	M. Mattson

70

71

78

Captain **Chief Engineer**
Erie Sand & Gravel Co., foot of Sasfras st., Erie, Pa.
(Owner and Operator)

J. S. St. John, General Manager and Superintendent

Erie	not in commission	
F. C. Osborn	E. Recker	A. Roberts
Jos. S. Scobell	L. Faulhaber	H. Mulptightner

79

Federal Motorship Corp., 1602 Marine Trust Bldg., Buffalo
(Owner and Operator)

Badger State (m.v.)	Edward D. Starkey.....	Joseph Weber
Buckeye State (m.v.)	William H. McQuivey.....	B. D. Tarr
Empire State (m.v.)	William Lansing.....	Wm. Post

80 Fitz Simons & Connell Dredge & Dock Co., 10 So. La Salle st., Chicago
(Owner and Operator)

John J. Roche, Gen. Superintendent

F. H. Camphausen (diesel tug)	Robert Bennet	
Charles J. Connell (tug)	Domnick Barrett.....	John Lyons
Frances M. Connell (diesel tug)	Art Peterson (operator)	
P. G. Connel Jr. (diesel tug)	E. J. Alle (operator)	
E. James Fucik (tug)	John Murphy.....	Alec Gallagher
John T. Lillis (diesel tug)	Al. Nolan.....	Fred Knudsen
Nassau (sand boat)	Carl Larson.....	Joseph Warner
John J. Roche (tug)	Con Shoper.....	George Johnson
(nee La Salle)		

Captain

Chief Engineer

81 Fontana Steamship Co. (See Fleet No. 47)
Foot Transit Co. Ltd., 68 King st., East, Toronto, Ont. (Operator)
 Capt. J. B. Foote (owner)

F. V. Massey	Frank P. McCarthy.....	E. Carpenter
--------------------	------------------------	--------------

82 Ford Motor Co., Rouge plant, Dearborn, Mich. (Owner and Operator)
 Capt. O. A. Johnson, Marine Superintendent

Benson Ford (m.v.)	Andrew Pedersen.....	E. Burkey
Henry Ford II (m.v.)	J. J. Pearce.....	M. McLaren
Barralton (tug)	D. D. Brown.....	L. Crandall
Buttercup (tug)	Sven Fagerstrom.....	A. Stanton
Dearborn (tug)	H. V. Herrick.....	S. Horvath
	A. Johnson.....	L. Ewell
	A. Keeping.....	F. Esordi
Lake Pleasant (barge)	W. Kamrath.....	W. Piercy
Lake Folcroft (barge)		

No appointments made for tugs Barlow and Humrick, and barges Lake Allen, Lake Crystal, Lake Farge, Lake Frugality, Lake Frumet, Lake Hemlock, Lake Inaha, Lake Louise, Lake Sapor, and Lake Freeland.

New York barge canal service

Chester	S. Inch.....	J. Hidden
Edgewater	B. Olsen.....	G. Pedersen
Green Island (m.v.)	O. Meling.....	S. B. Gage
Norfolk (m.v.)	R. G. Cumming.....	H. Culp

Franklin Steamship Co. (See Fleets Nos. 14)
Franklin Steamship Corp (See Fleet No. 101)

	Captain	Chief Engineer
83	Garrlock, Wm., Port Arthur, Ont. (Owner and Operator)	
Glen G.	William Garrlock	David Wear
	Gartland Steamship Co. (See Fleet No. 225)	
84	Georgian Bay Tourist Co. of Midland Ltd., Midland, Ont.	
	(Owner and Operator)	
City of Dover	W. Martin	A. Moreau
Midland City (m.v.)		A. Warner
Waterbus	D. McGrattan	
85	Gilbert, John H., 920 First st., Sandusky, O. (Owner and Operator)	
Tourist (diesel tug)		John H. Gilbert
86	Gillen, Edward E. Towing Co., 626 East Wisconsin ave., Milwaukee	
	(Owner and Operator)	
Ernest E. Beauvais (tug)	John Lenz	
Edward E. Gillen (tug)	A. Jacobson	Henry Marth
S. C. Peters (tug)		
	Globe Steamship Corp. (See Fleet No. 229)	
87	Grand Trunk Milwaukee Car Ferry Co., 1825 S. Allis st., Milwaukee	
	(Owner and Operator)	
	R. M. Bloeker, Supt. of Lake Michigan Car Ferries	
	(All are car ferries)	
City of Grand Haven	no appointments	
City of Grand Rapids	James G. Thorpe	Joseph Shunteck
City of Milwaukee	Roland Martin	Edward E. Luke
Madison	Ottmar Jahnke	James MacKenzie

14



	Captain	Chief Engineer
88	Gravel Products Co., 99 Miami st., Buffalo (Owner and Operator)	
Niagara	Thos. N. Hefferman	Joseph Raines
89	Great Lakes Dredge & Dock Co., 122 S. Michigan ave., Chicago	
	(Owner and Operator)	
	Paul W. Dickinson, General Manager	
	The following are tugs:	
James H. Cassidy	R. Church	H. Dwyer
John F. Cushing	M. J. Bishop	M. Welch
E. C. Dempsey	N. Merrill	W. Whaley
P. W. Dickinson	William Mattick	F. LaForge
William P. Feeley	R. Bishop	P. Meyers
Andrew H. Green	J. Eskeland	C. Runyan
Martin G. Hausler, Jr.	William Angell	Michael Cross
Hudson	W. Ward	E. Johnson
William H. Kinch	H. Sterling	J. Dickson
William A. Lydon	A. V. Ellis	A. Smith
John A. McCormick	G. Horgen	F. Dumary
Harry McGinnis	A. Armstrong	
Dr. Walter G. McGuire		
(nee Huron)	R. Hughes	J. Hilton
Marion	T. Thompson	W. Goode
Gen. E. M. Markham		
(nee Detroit)	R. Jeffrey	J. Casey
Martha C	R. Laurie	H. Hanger
Mary C	T. Stengel	O. Nordquist

15

Oscar F. Mayer
 Jas. J. Murray
 L. P. Smith
 Harry B. Williams
 John R. Williams

Captain **Chief Engineer**
 W. Campbell..... J. Herman
 T. Farrell..... J. West
 G. Murphy..... H. Sprague
 W. Jantze..... J. Williams
 William Ulrich..... J. LaCoy

The following are dredges:

Crest
 Illinois
 Indiana
 Junior
 Majestic
 Michigan
 Mogul
 New Jersey
 New York
 Ohio
 Scout
 Toledo (nee Toledo III)
 Turbo
 War Horse
 B-7
 M-9
 No. 54
 No. 55
 No. 56

L. E. Bouchard C. P. Sheltman
 F. Crosson..... J. Unsinn
 N. Paulin..... F. Brewer
 J. Canan..... D. Sheehan
 J. Frea..... F. Schuyler
 P. Green..... Fred Dummer
 W. Parrish..... J. Hoynosh
 M. Roberts..... S. Smith
 E. Ludvigson..... G. Harvey
 F. A. Crosson..... S. Miller

A. Montgomery..... D. Montgomery
 A. Richard..... C. Peterson
 O. Kutzner..... M. Welsh
 L. Cowan..... J. Prout
 A. Munson..... J. Pellow
 J. Kirchmaier..... S. Lund
 J. Hoehnan..... H. Marquette
 V. Jones..... H. Krieg

76

90 **Great Lakes Engineering Works, River Rouge (Detroit) Mich.**
 Eorse (tug) **Captain** Paul Kohn..... **Chief Engineer** William Berridge

91 **Great Lakes Steamship Co. Inc., 1548 Rockefeller Bldg., Cleveland**
(Owner and Operator)

J. Burton Ayers, Manager; Henry Cowan, Fleet Engineer

John B. Cowie 525-58-31-12 10,400
 Denmark 440-56-28-12 8,300
 John Dunn Jr. 504-58-30-24 9,800
 J. F. Durston 432-52-28-12 7,300
 Finland 549-56-31-12 10,400
 Chas. Hubbard 438-52-28-24 7,600
 Geo. P. Leonard 380-50-28-24 6,300
 A. E. Nettleton 525-55-31-12 9,800
 Norway 504-58-30-12 9,800
 Wm. Nottingham 380-50-28-24 6,300
 B. Lyman Smith 380-50-28-24 6,300
 Hurlbut W. Smith 414-50-28-24 6,800
 Lyman C. Smith 525-55-31-12 9,800
 Monroe C. Smith 380-50-28-24 6,300
 Wilbert L. Smith 380-50-28-24 6,300
 Sweden 414-50-28-24 6,800
 Smith Thompson 438-52-28-24 7,400
 Horace S. Wilkinson 580-60-32-12 11,500

E. E. Carleton..... Hugh Gangwish
 Howard Geel H. Otis Smith
 Louis J. Potvin..... James C. Browne
 H. L. Stewart..... Ernest Kurz
 George R. Manuel Fred R. Antons
 Chas. W. Caughell..... J. R. Goodrich
 Chas. Gonyaw..... John Brunner

Bradley J. Shackett Fred Shovar

Robert Goodwin..... Walter Hanssen
 F. B. Parsons..... Ben Ray

77

92

Great Lakes Towing Co., 1800 Terminal Tower, Cleveland

(Owner and Operator)

The company deems it impractical to announce appointments for the reason they are largely made by local managers at various ports and tugs are double and triple-crewed. The company's fleet includes:

Tugs Alabama, Alpena, America, Arizona, Arkansas, Ashtabula, California, Colorado, Connecticut, Delaware, Dunkirk, Fairport, Favorite, Florida, Frank W., Georgia, Idaho, Illinois, Indiana, Iowa, Kansas, Kentucky, Lorain, Louisiana, Maine, Maryland, Massachusetts, Michigan, Minnesota, Mississippi, Missouri, Montana, Nebraska, Nevada, New Hampshire, New Jersey, New Mexico, New York, North Dakota, Ohio, Oklahoma, Oregon, Pennsylvania, Racine, R. P. Reidenbach, Rhode Island, L. C. Sabin, Sandusky, Tennessee, Texas, Toledo, Utah, Vermont, Virginia, Washington, Waukegan, Wisconsin, Wyoming, Yale.

Lighters T. F. Newman, Pontoon, Reliance, Relief, Rescue, Resolute.

93

Great Lakes Transit Corp., 223 Erie st., Buffalo, N. Y.

F. P. Brady, General Agent

W. W. Atterbury	Alex McKenzie
W. J. Conners	Thos. Stevenson
P. E. Crowley	A. W. Hayden
J. M. Davis	P. Ebisch
Duluth	A. J. McPherson
C. T. Jaffray	W. S. MacDonald
H. A. Scandrett	J. Donahue
Alfred H. Smith	Geo. J. Healy

Package freighters Edward Chambers, George D. Dixon, J. E. Gorman, Edward

E. Loomis, Milwaukee, Fred W. Sargent, F. D. Underwood, Utica and Daniel Willard, and passenger steamers Juniata, Octorara and Tionesta not in commission.

94

Great Lakes Transport Corp., 3112 Book Tower, Detroit

(Owner and Operator)

Fueloil (barge)	
Mexoil	Nelson Gonyaw.....John Mathews
Panoil	C. V. Nissen.....Shirley Thompson

Pure Oil Steamship Co. (owner)

L. S. Westcoat
(nee Wm. R. Linn)

95

Gulf & Lake Navigation Co. Ltd., 417 St. Peter st., Montreal, Que.

(Owner and Operator)

R. A. Carter, General Manager

Birchton	C. A. Deschenes.....F. Gould
Cedarton	W. L. Mahaney.....R. James
Oakton	A. E. Brown.....J. H. Robinson

96

Gulf Oil Corp., Marine Dept., 17 Battery pl., New York

(Owner and Operator)

Willard F. Jones, General Manager

Paratex	H. Solberg.....L. Spring
Regent	J. F. Erbse.....L. P. Benjamin

97

***Hackett Towing Co., Quebec (Owner and Operator)**

C. A. B. (tug)	John Simard.....A. Dionne
Willie W. (tug)	A. Duchene.....A. Samson

78

79

	Captain	Chief Engineer
98	Hadley's Chatham Ltd., 47 Wellington st., Chatham, Ont.	
	Charles S. Hadley, President and General Manager	
Yeldah II	H. Corbitt	S. Edwards

99	Hall Corp. of Canada, 637 Common st., Montreal, Que. (Owner and Operator)	
	A. Hutchinson, Manager	
Conniscliffe Hall	E. Groulx	J. Boutin
Eaglescliffe Hall	H. Sinclair	J. L. Dunn
George L. Eaton	A. Barrett	G. B. Fleming
Meadcliffe Hall	L. Mongrain	P. Bolduc
Mont Louis	T. Marchand	A. Baribeau
John H. Price	T. L. Davis	E. Scott
Lucius W. Robinson	J. Ivany	A. Bibeau
Walter B. Reynolds	G. Dorais	A. Lafond
Rockcliffe Hall	W. M. Bowen	W. Lamoureux
Westcliffe Hall	M. H. Robson	W. Covey

100	Hall Corp., George, 502-504 Riverside ave., Ogdensburg, N. Y.	
	(Owner and Operator)	
	Wayne Lowe, Manager	
Adrian Iselin	Thomas Legault	John Rumble
	Hammermill Paper Co. (See Fleet No. 150)	

101	Hanna, M. A. Co., The, Agents, Leader Bldg., Cleveland (Operator)	
	Franklin Steamship Corp. (owner)	
Emory L. Ford	580-60-32-12 12,200	George Levis S. E. Atkinson
Fred G. Hartwell	596-64-33-12 13,400	J. M. Brines A. M. Robertson

Captain	Chief Engineer
----------------	-----------------------

The Eastern Steamship Co. (owner)		
Joseph Wood	504-54-30-12 9,300	E. F. Rice J. G. Nelson
The La Belle Steamship Co. (owner)		
La Belle	504-54-30-12 9,300	N. F. Peltier A. C. Barnes
National Steel Corp. (owner)		
Carle C. Conway	532-56-31-12 10,200	W. R. Maitland J. Watt
George R. Fink	532-56-31-12 10,200	A. H. Hartman H. A. Clark
A. E. Heekin	525-58-31-12 10,500	F. A. Colson A. Farquhar
L. W. Hill	525-58-31-12 10,500	M. M. Stewart F. J. Auttonson
Edmund W. Mudge	504-54-30-12 9,600	G. C. Hibbard C. F. Hoffman
David M. Weir	532-56-31-12 10,200	W. J. Lane R. M. Akerley
Ernest T. Weir	580-60-32-12 11,800	G. D. Tullian J. D. Summerville
J. C. Williams	525-55-31-12 9,800	R. F. Leng E. W. Scott
The Virginia Steamship Co. (owner)		
W. D. Crawford	504-54-31-24 9,500	C. T. Gallagher W. R. Johnson

102	Harris, Ralph, Scudder, Ont. (Owner and Operator)	
Pelee	not in commission	

103	Harrison, John & Sons Co., Ltd., 1417 Second ave., West, Owen Sound, Ont.	
	(Owner and Operator)	
Michigan (lighter)	Roy McGregor	
Northern (tug)	F. J. Waugh	James Nicol
104	Henning, A., Port Burwell, Ont., (Owner and Operator)	
Brown Brothers (tug)	A. Henning I. Shaw	

	Captain	Chief Engineer
105	Hintze, Edward, 514 Springland ave., Michigan City, Ind. (Owner and Operator)	
Skater	no appointments	
Anna C. Wilson	E. Hintze	
106	Hintze, Fred, 2814 N. Maplewood ave., Chicago (Owner and Operator)	
North Shore	Fred Hintze Jr.	John Hintze
107	Hoskins Coal & Dock Corp., 10 So. LaSalle st., Chicago, Ill. (Owner and Operator)	
Commerce	J. C. Hoskins, President	
Industry	Fred J. Hintz Jr.	
108	Huntsville Lake of Bays & Lake Simcoe Nav. Co. Ltd., Huntsville, Ont. (Owner and Operator)	
	(These steamers are operated only in inland lakes, Muskoka district)	
Algonquin	Robt. J. Parsons	John T. Smith
Bigwin	W. H. Elder	Robt. A. Johnston
Iroquois	A. E. Pink	W. G. Murray
Mohawk Belle	no appointments made	
Ramona	no appointments made	
109	Huron Transportation Co., 1325 Ford Bldg., Detroit (Owner and Operator) P. H. Townsend, Port Captain	
John W. Boardman	334-55-28	5,600
S. T. Crapo	384-60-29	7,200
Samuel Mitchell	293-40-25	2,700
	Thompson Campbell	Walter Kammer
	Donald McLachlan	Charles Fritz
	not in commission	

82

	Captain	Chief Engineer
110	Hutchinson & Co., 1508 Rockefeller Bldg., Cleveland (Operator)	
	Inland Steel Co. (owner); Anton Rud, Fleet Engineer	
Joseph Block	549-56-31-12	10,300
L. E. Block	596-64-33-24	13,400
Philip D. Block	580-60-32-24	11,800
N. F. Leopold	532-56-31-12	10,100
	Pioneer Steamship Co. (owner)	
Amazon	376-46-26-24	5,600
J. S. Ashley	504-54-30	
A. A. Augustus	504-54-30-12	9,500
Frank Billings	444-56-30-12	8,400
W. D. Calverley Jr.	380-50-28-12	6,300
S. B. Coolidge	376-48-26-24	5,600
James E. Ferris	444-56-30-12	8,400
Donald B. Gillies	525-55-31-12	10,100
C. L. Hutchinson	580-58-32-12	11,250
W. H. McGeane	480-56-30-12	9,500
Price McKinney	432-54-28-24	7,300
John S. Manuel	444-56-30-12	8,400
Martin Mullen	416-50-28-12	6,800
Wm. A. Paine	480-52-30-12	8,500
John Stanton	504-54-30-12	9,500
J. J. Sullivan	532-56-31-12	10,300
David P. Thompson	554-58-32-12	11,000
G. A. Tomlinson	504-54-30-12	9,500
	Stanley Anderson	R. D. Burt
	T. A. Johnson	Howard Benham
	John Johnson	Albert Holl
	H. P. Murphy	John Paytosh
	Ambrose Knudson	Carl McGeehan
	Charles Cawthra	Willard Pallas
	M. J. Johnson	Donald Swartz
	A. J. Munroe	John Linden
	James H. Smith	Geo. Schroder
	H. A. Johnson	Alex Kronberg
	W. D. Weborg	Andrew Tenwick
	E. P. Maxim	E. J. Fournier
	Wm. Schlegel	Paul Barth
	L. W. Smith	Peter B. Johnson
	H. W. Frilay	C. Shunneson
	John A. Logan	W. L. Smith
	Sevren O. Nelssen	Frank Wolfe
	H. J. Scheible	H. T. Landers

83

	Captain	Chief Engineer
James P. Walsh 480-52-30-12 8,400	Claire Duclon.....	Kenneth Peterman
111 Illinois Ship & Dredge Co., 222 West Adams st., Chicago (Owner and Operator)		
Brazil (hyd. sand boat)		
112 Imperial Oil Shipping Co., Ltd., Imperial Oil Bldg., Toronto, 2, Ont. (Owner and Operator) R. J. Rahlves, Manager		
Acadialite	J. E. Jenkins.....	J. Maxwell
Iocolite	H. McLellan	F. Pringle
Iocoma	Wm. Faulkner.....	S. H. Phillips
Imperoyal	R. Knight	R. D. Knox
Ottowalite	P. Butters	C. A. Bailey
Rideaulite	Wm. Mathews	R. Merrick
Royalite	J. Vickers	S. Slaunwhite
Sarnolite	E. A. Davies	E. LeFleur
Simcolite	H. Davidson	J. Bulmer
Talaralite	W. G. Kent.....	W. Wambeck
Windsolite	C. R. Dyon	W. R. Oakes
	India Navigation Co. (See Fleet No. 23)	
113 Inland Lines Ltd., 635 Common st., Montreal, Que. (Owner and Operator)		
Damia	K. LaRush	Frank Collier
Saracen	A. C. Clarry	J. E. Drake
	Inland Steel Co. (See Fleet No. 110)	
	Inter Ocean Steamship Co. (See Fleet No. 229)	
	Interlake Steamship Co. (See Fleet No. 188)	

24

	Captain	Chief Engineer
114 International Harvester Co., 180 N. Michigan ave., Chicago (Owner and Operator) H. F. Hughes, Assistant Manager		
The Harvester 525-58-31-12 10,500	J. R. Boswell.....	J. L. Young
The International 586-60-32-12 11,800	J. B. Routhier.....	E. T. Everill
115 International Transit Co., 527 Queen st., East, Sault Ste. Marie, Ont. (Owner and Operator) P. Martin, Port Captain		
Agoming	J. B. Rintoul.....	Grant M. Harrison
	Gordon Harrison.....	M. Caufield
	Fred Harrison.....	Chas. Thompson
116 International Waterways Navigation Ltd., 635 Common st., Montreal, Que. (Owner and Operator) R. A. Campbell, Manager		
International		not in commission
117 Inter-Provincial Steamship Lines, Ltd., Royal Bank Chambers, Halifax, Nova Scotia F. K. Warren, President		
Moyra	Eugene Coates.....	Harry Cliffe
Sonia	Norman E. Smith.....	Wm. Harvey
Zenda	R. L. Clarke.....	E. Chandler

25

118 Interstate Steamship Co., 815 Rockefeller Bldg., Cleveland
(Owner and Operator)

R. W. England, Marine Manager;	A. J. Reiner, Lake Traffic Manager
B. F. Jones 530-56-31-24 10,100	L. J. Dufenhorst..... C. H. Cosnett
Willis L. King 580-58-32-12 11,400	F. N. Watts George Grunthamer
James Laughlin 530-56-31-24 10,100	A. R. Olsson James Pearson
Thomas Walters 580-58-32-12 11,400	M. G. Allen..... C. L. Irish

Island Transportation Co. (See Fleet No. 122)

119 Janin, A., & Co. Ltd., 1460 W. Sherbrooke st., Montreal, Que.
(Owner and Operator)

A. E. Gibson (tug)	not in commission
Claire Janin (tug)	not in commission
120* Johnston, Tom, Gravel Co. Ltd., Grand Haven, Mich. (Owner and Operator)	
General (tug)	
Senniece (tug)	Henry Face..... Robert Collins
Stamina (tug)	William Noantay..... Arthur Landal

121 Jupiter Steamship Co., 317 Rockefeller Bldg., Cleveland (Owner and Operator)
W. C. Secord, Manager

Jupiter 346-48-28 .. 5,000	F. W. Thody..... H. B. Muhlitter
----------------------------------	----------------------------------

122 Keightley, (Miss) E. M., and Joseph Fitzpatrick, St. Ignace, Mich. (Operator)

Island Transportation Co. (owner)	
Algomah II	William Schepler..... James Sherry

123 Kelley Island Lime & Transport Co., Sandusky, O. (Owner and Operator)

Hydro	Irving Ohlemacher..... Oscar Noak
Kelley Island	J. C. Ingwersen S. A. Forst
John M. McKerchey	Robert Donaldsen..... E. L. Hurlburt

124 Keystone Transports Ltd., 312 Power Bldg., Montreal, Que.
(Owner and Operator)

Capt. L. Beaupre, Marine Superintendent	
Keybar	W. V. Smith..... R. Garriock
Keybell	W. A. Davis..... Omphrey Roderique
Keydon	E. F. Anderson..... W. Crozier
Keyholt	J. E. McLeod..... C. J. Charlesworth
Keymont	Wm. J. H. Brown..... M. Bechervaise
Keynor	S. G. Williamson..... James Boak
Keyport	E. Davidson..... L. Nordnes
Keystate	E. J. Smith..... D. Annand
Keyvive	George Brown..... George Baker
Keywest	W. Coffin..... A. H. Horton
Kinsman Transit Co. (See Fleet No. 224)	

125 Kishman Fish Co., Vermillion, O. (Owner and Operator)

H. B. Kishman (tug)	Otto Full
Lester K. (tug)	Shirley Lumley
Mary F. (tug)	Karl Leidheiser
Neptune (tug)	Russell Appeman

	Captain	Chief Engineer
126	Kolbe Fisheries Co., Erie, Pa. (Owner and Operator)	
	M. A. Tucker, Manager	
	(All are tugs)	
Aclipson	Karl Fratus	
Charles L.	D. J. Regan.....	William Michels
Wm. H. Jackway	Merle Jackway	
Martha B.	Frank Steele	
Marvet H.	Charles Hoskins.....	J. Cranston
Merle J.	D. MacIvor	
Merle J.	W. Purdue	
Peggy Ann	T. J. Welsh.....	J. Nolan
Sea Bird	M. Heidt	
Tommy T.		

La Belle Steamship Co. (See Fleet No. 101)

127	La Cie de Traverse Valleyfield-Coteau Dulac Ltd., Valleyfield, Que.	
	(Owner and Operator)	
Beauharnois	Ernest Lefevre.....	Georges Houde
	Lake Chelan Steamship Co. (See Fleet No. 126)	
	Lake Erie Coal Co. Ltd. (See Fleet No. 128)	

128	Lake Erie Navigation Co. Ltd., Walkerville, Ont. (Operator)	
	Lake Erie Coal Co. Ltd., Walkerville, Ont. (owner)	
	L. H. Kent, Chief Marine Engineer, Ludington, Mich.	
Alexander Leslie	R. Alexander.....	David Brown



	Captain	Chief Engineer
129	Lake Sand Corp., 228 North LaSalle st., Chicago (Owner and Operator)	
Gilbert	T. B. Jacobsen.....	W. Walder
130	Lake Tankers Corp., 20 Exchange place, New York (Owner and Operator)	
Justine C. Allen (m.v.)	E. A. Uhler.....	Nelson Apelskog
Martha E. Allen (m.v.)	F. W. Dixon.....	E. A. Stevens
131	Lake Transportation Co., Ltd., 132 N. May st., Fort William, Ont.	
	(Owner and Operator)	
John P. Geistman	Jas. Walton.....	A. Kinnear
Gotham (tug)	D. Smith.....	H. Charlton
Marguerite W. (tug)	E. R. Jordan.....	Geo. Hill
Walter Wyman (tug)	H. Keenan.....	Jas. McGill
Alfred J. (barge)	John Kruppa.....	G. Arvelin
Blanche H.	A. Lavigne.....	R. Shaw
Ethel J.	E. O. Bursey.....	C. Lavigne
Florence J.	M. Bishop	
Merle H.	J. Agnew.....	A. Sparling

Lakehead Transportation Co. (See Fleet No. 211)

132	Lakes & St. Lawrence Navigation Co. Ltd., Cardinal, Ont.	
	(Owner and Operator)	
	R. S. Browning, Marine Superintendent	
Casco	W. J. Mills.....	S. E. Moore
133	LaWay, Capt. E. J., Cheboygan, Mich. (Owner and Operator)	
M. H. Stuart	E. J. LaWay	

	Captain	Chief Engineer
134 Levis Ferry Co. Ltd., Champlain Market, Quebec (Owner and Operator)	J. L. Roberge, Manager	
Bienville	Armand Dumont.....	W. Aubin
Colbert	Alphonse Forgues.....	M. Lamothe
	C. Martel.....	A. Begin
Louis Jolliet	U. Lemieux.....	W. Desrochers
	Eugene Fortin	J. Bernier

Steamers Cite de Levis and Cite de Quebec used in winter navigation only

135 Lindsay Coal Co., Port Huron, Mich.
E. S. Lindsay (owner)

Charles Franks (diesel tug)

Peerless Barge No. 1

136 Lloyd Tankers Ltd., 80 King st., West, Toronto, Can.
(Owner and Operator)

Bruce Hudson

Joan Virginia

R. Hindman.....J. Brodeur
S. Ahern.....D. Arbour

137 The Lorain Coal & Dock Co., Terminal Tower, Cleveland
(Owner and Operator)
H. L. Gates, Manager

Lorain (fuel lighter)

M. E. Jones.....N. Smith
C. C. Tillock

138 Luedtke Engineering Co., Frankfort, Mich. (Owner and Operator)

Karl E. Luedtke (tug)

Howard Smith.....Wm. Hall



	Captain	Chief Engineer
139 Lyons Construction Co., Whitehall, Mich.	Ira J. Lyons (owner)	
C. J. Boss (diesel tug)		
Fred C. Grelling (tug)	Ira J. Lyons	
Progress (dredge)		
Gold Digger (dredge)		
Sumac (light house tender)		

140 Mackinac Transportation Co., St. Ignace, Mich. (Operator)
Mackinac Transportation Co., Detroit (owner)
C. H. Brown, Port Captain

Chief Wawatan (carferry)

Sainte Marie (carferry)

C. H. Brown.....L. W. Specht
Alexander Tromblay...Harry Cheeseman

Mahoning Steamship Co. (See Fleet No. 14)

141 Marine Industries Ltd., Sorel, Que. (Owner and Operator)

Aberdeen (tug)

Baroff (tug)

Cahotte (tug)

Capt. Simard (tug)

Capt. T. W. Morrison (tug)

David Seath (tug)

Deschenaux (tug)

Dramis (tug)

Earl Bess (tug)

Franklin C (tug)

A. Dumas.....P. Joly
C. Millette.....H. Paradis
S. Beaudet.....P. Blette
J. Mongeau.....A. Demers
E. Duchesne.....L. Frechette
A. Lemay.....W. Braconnier
E. Larosee.....E. Boisclair
D. Beaudet.....O. Mandeville
J. Boily.....F. Denis
A. Bonin.....P. Lanciault

George M. McKee (tug)
 Hullman (tug)
 Ostrea II (tug)
 Patrol No. 4 (tug)
 Robert G. Weddell (tug)
 Serieux (tug)
 Bruxelles XXXX (dredge)
 Capitaine Saurel (dredge)
 General Brock (dredge)
 General Montcalm (dredge)
 General Wolfe (dredge)
 John Kennedy (dredge)
 Manseau No. 101 (dredge)
 Manseau No. 103 (dredge)
 Manseau No. 107 (dredge)
 New Welland (dredge)
 Manseau No. 104 (derrick)
 Derrick & Hoister No. 2
 C. & R. Derrick No. 1
 Manseau No. 2 (derrick)
 Montcalm Derrick No. 1

Captain	Chief Engineer
Alp. Bonin	A. Poulin
W. Lavallee	J. Laforest
A. Audet	C. Peloquin
A. Goulet	B. Paul
J. Cote	H. Drolet
W. Allison	D. Guay
A. Boucher	J. Demers
A. Simoneau	H. Paulet
J. Clouston	T. Carrie
H. Presley	A. Larsen
A. Jacobsen	Hugh Bell
P. Paul	
E. Gallant	J. Cotnoir
	M. Fiset
J. Paul	
A. Simoneau	G. Begin

92

Maplebranch (tanker)
 Oakbranch (tanker)
 Willowbranch (tanker)

Branch Lines	Limited (owner)
	W. Carre
	D. Charland
	L. Blais
	J. Cournoyer
	C. Mondor
	H. Lemieux

142	Marine Iron & Shipbuilding Co., Foot of Eleventh ave., West, Duluth	Captain	Chief Engineer
	(Owner and Operator)		
	John Geistman, Manager		
John Abernathy (tug)	David Berg		
Toby Cahill (tug)	Norman Skafte		
Islay (tug)	William McLean		A. E. Johnson
143	Marine Transit Co., 131 East Wacker drive, Chicago		
	(Owner and Operator)		
American	Louis Thorsen		Frank Buchler
144	Marquette & Bessemer Dock & Navigation Co. (Owner and Operator)		
Marquette & Bessemer No. 1 (car ferry)	not in commission		
145	Matheson, Capt. John S., Southampton, Ont. (Owner and Operator)		
LaPlante (tug)	John S. Matheson		John Morton
146	Matheson, Leland, Southampton, Ont. (Owner and Operator)		
Douglas M. (tug)	Donald Matheson		George Eby
147	Matton, John E. & Son, Inc., Waterford, N. Y. (Owner and Operator)		
	(All are tugs)		
John A. Becker	John Maloney		H. Gibbs
Matton	E. L. Roberts		C. Knowlson
Matton No. 10	A. Huftill		I. Anderson
Matton No. 20	James Clinton		Robert Bray
Matton No. 21	Leon Fish		J. La Valley
John E. Matton	Henry Roberts		Earl Clark
Ralph E. Matton	Frank Godfrey		Wm. Pengelley

93

	Captain	Chief Engineer
H. A. Meldrum	Urban Fontaine.....	Geo. Van Allen
P. C. Ronan	George Godfrey	T. Bell

T. J. McCarthy Steamship Co. (See Fleet No. 63)

148 McColl-Frontenac Oil Co. Ltd., Yardley House, Toronto, Ont. (Operator)		
S. S. Cyclo-Chief Ltd., Montreal (owner)		
Cyclo-Chief	A. H. Foote	C. G. Myatt
S. S. Cyclo-Warrior Ltd., Montreal (owner)		
Cyclo-Warrior	H. F. Halifax	C. Carr
S. S. Cyclo-Braye Ltd., Montreal (owner)		
John Irwin	I. L. Mateer	J. M. Kettles

149 McFadden, J. J., Ltd., Blind River, Ont. (Owner and Operator)		
Waubauskene	Wm. Decota	Dougall McLeod

150 McFadden, J. J., Lumber Co., Ltd., Blind River, Ont. (Owner)		
Hammermill Paper Co., Port Arthur, Ont. (operator)		
Wahnapiatae	Wm. Garrlock	David Moore

McKellar Steamships Ltd. (See Fleet No. 211)

151 McLean & Son, A. B., Brock st. dock, Sault Ste. Marie, Ont. (Owner and Operator)		
Capt. R. A. and John McLean, Managers		
James J. Baxter Jr. (tug)	William Bennett	William Biron
Miseford (tug)	no appointments made	
Nadine (barge)	Charles Johnson	
Spragge (tug)	no appointments	

	Captain	Chief Engineer
Derrick Scow No. 3		A. Biron
Derrick Scow No. 4		Fleet McLean
Dredge L. S. No. 3	Alphy Primeau	
Drill Boat No. 5	Allen McKay	

152 McQueen, Capt. J. E., Amherstburg, Ont. (Owner and Operator)		
Erle Isle (diesel passenger)	J. Penner	R. Ferguson
Patricia McQueen (diesel tug)	E. Winter	F. Lapierre
Peter Koenig (barge)		O. McKenzie
Progresso (tug)	J. McQueen	H. Atkinson
Henry Stokes (tug)	C. R. Hackett	W. McQueen
Handy Boy (lighter)	D. Foucher	

153 Meagher, W. J., Bay City, Mich. (Owner and Operator)		
Falcon (tug)		
Tipperary (tug)	W. J. Meagher	Fred Lennox

154 Merritt-Chapman & Scott Corp., 515 Marion Bldg., Cleveland (Owner and Operator)		
Clyde (derrick scow)		
Limit (derrick scow)		
No. 4 (derrick scow)		
William A. Whitney (tug)	James Hoben	J. Moorhouse

155 Michigan Atlantic Corp., 60 E. Forty-second st., New York (Owner and Operator)		
Michigan (m.v.)	Oscar Gronwall	T. Johnson

	Captain	Chief Engineer
156 Michigan Limestone & Chemical Co., Rogers City, Mich.		
	(Owner and Operator)	
Central (tug)	Arthur Cook.....	Frank Flewelling
Frederick T. Kellers (tug)A. P. Boehmer
Rogers City (tug)	E. G. Newhouse.....	Frank Weisnewski
	Walter Peppler.....	Frank Lamp

157 Michigan State Ferry, St. Ignace, Mich. (Operator)		
	Michigan State Highway Dept. Lansing, Mich. (owner)	
	M. D. Van Wagoner, Commissioner; G. D. Kennedy, Deputy Commissioner;	
	Capt. Geo. F. Loughin, Superintendent	
City of Cheboygan	Andrew Coleman.....	Sim Lowery
City of Munising	John Martino.....	Wm. Ney
Mackinaw City	Benjamin Houle.....	Leo Fogelsonger
Saint Ignace	Louis Strahan.....	Luke Manion
Straits of Mackinac	M. D. Ramage.....	M. F. Madden

Michigan State Highway Dept. (See Fleet No. 157)

158 Midland Steamship Line, 2101 Terminal Tower, Cleveland		
	(Owner and Operator)	
	Baird Tewksbury, President; Capt. J. J. Fretus, Manager	
Hazen Butler	420-52-28-12 7,000	N. B. Roach.....C. J. Dickey
Michael Gallagher	420-54-28-12 7,400	D. M. Post.....J. W. Long
C. O. Jenkins	504-54-31-12 9,300	E. W. May.....A. M. Houston
J. H. Macoubrey	380-50-28-12 6,400	G. W. Cole.....Joseph F. Talder
W. G. Pollock	420-52-28-12 7,000	Wm. Langell.....Thomas J. Reilly

	Captain	Chief Engineer
Edw. N. Saunders Jr. 504-55-30-12 9,500	E. H. Bennett.....	G. W. Kroening
Carmi A. Thompson 525-58-31-12 10,500	R. J. Neville.....	Thomas E. Sheridan

159 Mid-West Transportation Co., Bay City, Mich. (Owner and Operator)		
Aetna	252-44-19 3,000	Bert Payea.....A. G. Olmsted
E. M. Bunce	251-44-22 3,000	no appointments
	Midwest Vessel Corp. (See Fleet No. 55)	

160 Milwaukee, City of, Fire Department, Milwaukee		
	Peter Steinkellner, Chief of Fire Department	
	(All vessels are fireboats)	

M. F. D. No. 15	Max Etzel.....	George Driscoll
M. F. D. No. 29	Harold Ellingsen.....	Paul Kneuppel
Torrent	Wm. Driscoll.....	George Schmidt

161 Mindemoya Transportation Co., Toronto, Ont. (Owner and Operator)		
Mindemoya	Capt. Manzutti.....	Roy Burgess

162 Minnesota-Atlantic Transit Co., 275 Fuhrman Blvd., Buffalo, N. Y. (operator)		
	Terminals & Transportation Corp. (owner)	
	H. T. Hoopes, Buffalo, President; W. A. Young, Detroit, Vice-President—Operations;	
	H. M. Bouchard, Superintendent of Steamships, Buffalo	

Ace	Archibald Maclean.....	Fred W. Urban
Jack	Louis F. Guyette.....	Warren Cadwell
King	Lloyd Morrison.....	Milo Ballou
Nine		
Queen		
Ten	Gust Ege.....	C. M. Ryan

	Captain	Chief Engineer
163	Mohawk Navigation Co. Ltd., 635 Common st., Montreal, Que.	
	(Owner and Operator)	
	R. A. Campbell, Managing Director	
Alfred Krupp (barge).....	352-44-26	5,700 Sam Brunet
Capt. C. D. Secord	346-48-24	8,900 J. A. Felker.....J. M. Gillies
Sir Thomas Shaughnessy	480-52-30	9,000 Angus MacKay.....William Keith
164	Montreal Harbour, National Harbours Board, Montreal, Que.	
	(Owner and Operator)	
	Capt. J. P. Dufour, Harbour Master	
Sir Hugh Allen (tug)	J. Lacouture.....	J. C. Jacques
Ethel (barge)		
Robert Mackay (tug)	M. Cournoyer.....	A. Vezina
John Young (tug)	Z. Perreault.....	R. Cossette
	Morrow Steamship Co. (See Fleet No. 178)	
165	Morton Salt Co., 310 So. Michigan ave., Chicago (Owner and Operator)	
	Robert K. Warren, Manager	
Covalt	253-44-25	F. O. Johnson.....H. W. Schmock
166	National Motorship Corp., 17 Battery place, New York (Owner and Operator)	
Cleveland (diesel electric)	Edward T. Comins.....	Charles Hoie
Detroit (diesel electric)	Fred J. Hill.....	Peter Eike
167	National Sand & Material Co. Ltd., 402 Harbor Bldg., Toronto, Ont.	
	(Owner and Operator)	
Baxter Dick	R. Munroe.....	A. Mosher

88

	Captain	Chief Engineer
Charles Dick	J. D. Reid	Corey Harvey
O'Connor Dick	H. A. Tufts	

National Steamship Co. (See Fleet No. 229)

National Steel Corp. (See Fleet No. 101)

168	Neff Transportation Co., 8409 Euclid ave., Cleveland	
Louisville (motor tug)		
169	Neuman Boat Line, Sandusky, Ohio (Owner and Operator)	
Mascot (m.v.)	Jake Frederick	Norman Traverso
Messenger (m.v.)	Leonard Neuman	Cecil Shortliff
170	Newaygo Timber Co. Ltd., Port Arthur, Ont. (Owner)	
	(Subsidiary of Consolidated Water Power & Paper Co.)	
Rocket	Arthur H. Harpell.....	Carl Ringham
(See also Fleet No. 53)		
171	Niagara, St. Catharines & Toronto Nav. Co. Ltd., St. Catharines, Ont.	
	(Operator)	
	J. R. Empringham, Superintendent	
	Canadian National Railways (owner)	
Northumberland	George Wilson	H. N. Bonnell
	Dalhousie Navigation Co., C. N. R. (owner)	
Dalhousie City	George C. Childs	William Stewart
(See also Fleet No. 35)		
	Nicholson Transit Co. (See Fleet No. 172)	

89

	Captain	Chief Engineer
172	Nicholson, William, P. O. Box 66, River Rouge, Detroit (Operator)	
	Nicholson Transit Co. (owner)	
	Capt. H. H. Parsons, Marine Supt.	
Fellowcraft	E. Tobin	G. Edmonds
Fleetwood	W. R. Neal	E. Basney
F. E. Harvey	no appointments	
Ironwood	A. Peterson	S. Katcher
E. C. Pope	W. J. Edgar	Roy Walker
Tampico	H. Booth	C. Rexford
Swederope	no appointments	
James Watt	C. A. Ticknor	C. Nicholson

	Ecorse Transit Co. (owner)	
H. Dahlke		A. B. Cascadden
Oakwood	Millard Brewer	Berger Hansen
	Tri-Lakes Steamship Co. (owner)	
Rockwood	Ed. H. Collen	Archie Proulx
Sinaloa	W. C. Fontaine	Frank Burkman

173	Nicholson Universal Steamship Co., 1440 E. Atwater st., Detroit	
	(Owner and Operator)	
	F. L. Hewitt, President; O. W. Benham, Vice President, Operations	
Coralia	E. Massman	F. Rourk
Crescent City	H. B. McCool	C. Sampson
Penobscot		
Sonoma	D. Elliott	B. Beauchamp
Sonora	J. W. Galton	O. Merrill

	Captain	Chief Engineer
South Park	C. Tobin	H. Lozon
Sultana	W. Fehley	H. Shaw
Graham C. Woodruff	J. McKinnon	T. Quigley

174	North American Transports Ltd., 635 Common st., Montreal, Que.	
	R. A. Campbell, Managing Director	
Redcloud (m.v.)	3,000	J. J. Lawrence
Redfern (m.v.)	3,000	A. J. Irvine
Redriver (m.v.)	3,000	Walter Kirk
Redwood (m.v.)	3,000	J. J. Mailhot

175	Northern Paper Mills Ltd., Coppell, Ont.	
	A. K. McNaughton, Secretary	
Norco	Alex R. Cleave	Howard Hazlett

176	Northwest Steamships Ltd., 59 King st., East, Toronto, Ont.	
A. A. Hudson (nee Rahane)	Dalton Hudson	E. N. Ramsay

Superior	S. C. Bell	A. E. Hurst
----------	------------	-------------

177	Northwestern Co., Sturgeon Bay, Wis. (Owner and Operator)	
Fred W. Green	Ole Jacobsen	Henry Isaaksen

178	Oglebay, Norton & Co., 1208 Hanna Bldg., Cleveland (Operator)	
	Columbia Transportation Co. (owner)	
M. J. Bartelme	412-48-28-24	6,000
Thomas Britt	413-52-28-24	6,600
Harry T. Ewig	346-48-28-	5,000
Joseph H. Frantz	592-62-32-24	12,000
	N. Larsen	W. Freeman

	Captain	Chief Engineer
Charles W. Galloway 504-54-30-24	9,000 R. J. Reid	H. P. Roberts
Howard M. Hanna, Jr. 504-54-30-24	9,000 F. Blacklock	C. Williamson
W. W. Holloway 532-56-31-12	10,000 J. S. Moran	J. E. Eustice
O. S. McFarland 360-50-28-	5,700 J. C. Grefor	G. McCullough
E. G. Mathiott 346-48-28-	4,800 H. N. Millington	O. Peterson
J. Clare Miller 525-55-31-12	9,700 P. P. Lennon	O. Anderson
R. E. Moody 354-48-28-	4,800 W. C. Ruddle	W. E. Wood
David Z. Norton 480-52-30-24	8,200 H. F. Wiersch	Wm. Leimbach
Wm. B. Pilkey 412-48-28-24	6,000	
G. G. Post 346-48-28-	5,000 D. Huser	C. Swartz
W. C. Richardson 420-52-28-24	7,300 J. F. Richardson	A. E. Bates
Wm. F. Stifel 420-52-28-24	7,300 E. Andreas	M. Bertelsen
S. B. Way 532-58-31-12	10,400 A. McDonald	C. W. Gustin

	Morrow Steamship Co. (owner)	
Robert J. Paisley 410-48-28-	6,600 D. M. Crooker	E. E. Jacques
	J. A. Paisley Steamship Co. (owner)	
Ben E. Tate 356-50-28-	5,600 F. L. Meno	John Arbter
	Saginaw Dock & Terminal Co. (owner)	
Carrollton 241-43-22-	2,500 Chas. Ferguson	A. H. Thompson
Frank J. Peterson 253-43-23-	2,800 S. Furland	R. Shinsky
Saginaw 251-44-23-	2,800 J. M. Conlon	R. K. Laderack

179 **Ontario Car Ferry Co. Ltd., 384 St. James St., Montreal, Que.**
R. B. Teagle, Manager

Ontario No. 1 (car ferry)	S. H. McCaig	C. Morrison
Ontario No. 2 (car ferry)	S. H. McCaig	C. Morrison

	Captain	Chief Engineer
180 Ottawa, Department of Public Works,	Ottawa, Ont. (Owner and Operator)	
Hercules (tug)	Norman Jackson	William H. Baker
Peel (tug)	not in commission	
P.W.D. No. 117 (dredge)	Engineer Master John Howell	

181 **Ottawa Transportation Co. Ltd., Ottawa, Ont. (Owner and Operator)**
C. T. Kirby, President; C. E. Russell, Managing Director
Steamers Hall, Wilfrid Laurier, Denis Murphy and Ottawan not in commission and offered for sale.

182 **Owen Sound Transportation Co. Ltd., 1101 First ave., West, Owen Sound, Ont.**

Manitoulin	R. Morrison	William Owens
Normac (m.v.)	O. S. Long	W. Monkhouse

(Operating joint sailings with Dominion Transportation Co. Ltd., See Fleet No. 68)

J. A. Paisley Steamship Co. (See Fleet No. 178)

183 ***Paquette, Adrien, Champlin, Que. (Owner and Operator)**

Ste. Therese A.	Adrien Paquette	Joseph Vezina
-----------------	-----------------	---------------

184 **Paterson Steamships Ltd., Fort William, Ont. (Owner and Operator)**

Port Captains: J. D. Montgomery, Montreal; R. J. Wilson, Windsor, Ont.		
Bricoldoc	H. Odessa	W. T. Smith
Canadoc	J. N. Foote	Simon Barr
Cartierdoc	R. Simpall	R. Smith
Collingdoc	R. T. Robinson	V. Bernier
Coteaudoc	J. C. Prowse	O. Lamoureux
Farrandoc	C. Courtemanche	E. C. Featherstone
Fort Wildoc	R. E. Chapman	P. W. Pratt

Ganandoc
 Hamildoc
 Kenordoc
 Kingdoc
 Lachinedoc
 Lavaldoc
 Lawrendoc
 Mantadoc
 Mondoc
 Newbrundoc
 Novadoc
 Ontadoc
 Portadoc
 Prescodoc
 Prindoc
 Quedoc
 Sarniadoc
 Saskadoc
 Soodoc
 Soreldoc
 Thordoc
 Torondoc
 Troisdoc
 Vandoc
 Wellandoc

Captain	Chief Engineer
R. Mallette	R. Reid
M. Mongeau	C. Vent
L. Burns	J. Bellmore
F. Boulton	F. McCaulay
X. Daneau	W. Mooney
W. A. Sabine	A. Chalmers
N. Johnston	H. Abercrombie
E. W. Baker	T. Dryburgh
B. R. Greir	A. Plant
F. Butters	W. Colville
N. Somers	W. Lalonde
H. B. Hunt	L. Buttler
R. Gignac	H. Barr
L. Legendre	F. Fawcett
A. Simepell	H. Cross
F. Garrett	R. F. Hicks
R. A. Cameron	J. Kennedy
W. J. Kirkwood	J. Robinson
W. A. Boulton	P. Audette
A. J. Vallis	J. Ash
R. Simpson	W. Tymon
T. Jewitt	J. Nicolls
D. Steip	E. Sparling

104

	Captain	Chief Engineer
Windoc	K. C. Clark	S. Pitfield
185 Pennsylvania-Ontario Transportation Co., 827 Rockefeller Bldg., Cleveland (Owner and Operator) J. L. Tinny, Manager		
Ashtabula (car ferry)	C. F. Meyers	S. M. Sylvester
186 Pere Marquette Railway Co., General Motors Bldg., Detroit (Owner and Operator) L. H. Kent, Superintendent of Steamships (All vessels are car ferries)		
Pere Marquette No. 12	Thomas A. Brown	Charles Millett
Pere Marquette No. 14	Elroy Fischer	Richard McGuire
Pere Marquette No. 17	Jens Vevang	George Liebertreau
Pere Marquette No. 18	E. S. Cronberg	Thomas Loy
Pere Marquette No. 19		
Pere Marquette No. 21	A. Altschwager	Joseph Koob
Pere Marquette No. 22	John F. Johnson	Richard Langrill
City of Flint No. 32	C. E. Robertson	G. W. Larsen
City of Saginaw No. 31	Esten Bahle	Henry Akesson
187 Petosky Transportation Co., Petosky, Mich. (Owner and Operator) H. H. Lucas, Vice President		
J. B. John	F. P. Russell	Ervin Wendorff
188 Pickands, Mather & Co., Union Commerce Bldg., Cleveland (Operator) Interlake Steamship Co. (owner) Thomas F. Zealand, Marine Supt., Charles E. Collins, Fleet Engineer		
Adriatic 420-52-28-12 7,200		

105

Arcturus	514-54-31-24	9,550
Fayette Brown	504-54-30-12	9,350
Harvey H. Brown	532-58-32-12	10,350
Calumet	420-52-29-12	7,200
J. A. Campbell	525-58-31-12	10,550
Canopus	462-50-28-24	7,800
Cetus	416-50-28-24	6,900
E. A. S. Clarke	532-56-30-12	10,200
Corvus	416-50-28-24	6,900
Harry Coulby	607-65-33-24	13,700
Crete	480-52-30-12	8,450
Harry W. Croft	504-58-30-24	9,900
Cygnus	416-50-28-24	6,900
Henry G. Dalton	580-60-32-12	11,900
Wm. B. Davock	420-52-28-24	7,200
Elba	420-52-28-12	7,200
Hemlock	420-52-28-12	7,200
Robert Hobson	580-60-32-24	11,900
Elton Hoyt II	530-56-32-12	10,000
Harry R. Jones	448-52-28-12	7,800
Lagonda	375-46-28	
C. H. McCullogh Jr.	512-56-31-12	10,200
William McLauchlan	580-60-32-24	11,900
Samuel Mather	580-60-32-24	11,900
D. O. Mills	532-58-32-12	10,350

Captain

Chief Engineer

Frank Van Dusen	Robert Fojkort
W. B. Spencer	John Cannon
A. C. Bammel	Albert Jess
Robert Endleman	Henry Emerson
Ross Campbell	William McSweeney
Emmet O'Connell	Wm. Schaff
S. H. Smith	Jas. Brand
J. M. Duddlesoir	J. F. Johnson
H. C. Inches	Chester Bell
R. M. Magnuson	Ralph Britz
H. C. Hansen	Leo Arnold
J. L. McNellis	Milton Frye
V. J. Noel	Russell Oulette
Carl Basch	H. D. May
Guy Smith	Thos. W. Johnson
L. W. Norteman	Wm. Anderson
W. H. McNeill	F. E. Lalonde
R. E. Johnson	E. Timms

106

Jay C. Morse	532-58-31-12	10,350
Odanah	420-52-28-12	
Pathfinder	530-60-32-12	10,550
Pegasus	416-50-28-24	6,900
Perseus	462-50-28-24	7,800
Col. Jas. Pickands	580-60-32-24	11,900
James H. Reed	448-52-28-12	7,800
C. S. Robinson	525-55-31-12	9,850
Saturn	416-50-28-12	6,900
Charles M. Schwab	580-60-32-24	11,900
Joseph Sellwood	525-55-31-12	9,850
John Sherwin	514-54-31-24	9,550
Amasa Stone	525-55-31-12	9,750
Taurus	416-50-28-24	6,900
Vega	416-50-28-12	6,900
Venus	346-48-28	
Verona	480-52-30-24	8,450
Jas. C. Wallace	532-56-31-12	10,400
Augustus B. Wolvin	540-56-32-12	10,450
Youngstown	580-60-32-12	11,900

Captain

Chief Engineer

T. H. Saunders	L. M. Richardson
J. M. McCarthy	John Antons
James Larsen	J. E. Vignerow
Earling Jackson	Wm. Fritz
W. L. Girardin	Elmer Zobel
W. E. Sullivan	John Keller
A. C. Drouillard	Hugo Dietlin
M. O. Ness	
C. E. Downs	L. Coulette
Byron Stewart	Ray Arnold
Harry Everson	Ralph Dammell
F. J. Lawrence	Thos. Miller
A. E. Olsen	Sam Sanderson
C. C. Stewart	A. J. Hoffman

107

189 Pine Ridge Navigation Co., Ltd., 437 Ouellette ave., Windsor, Ont.
A. D. Cronin, Manager

Jean Fraser (tug)	F. T. Sinnott	John Smith
Rose Burgess (barge)	J. Davis	
Great Western (barge)	W. Miller	

Captain

Chief Engineer

190 Pine Ridge Transportation Co., 716 Fidelity Bldg., Detroit
 M. Elsey, Dock Supt.; Arthur D. Cronin, General, Manager
 Pine Ridge C. E. Rattray L. Pollack

Pioneer Steamship Co. (See Fleet No. 110)

191 Pioneer Transportation Co. Ltd., 660 Richmond st., London, Ont.
 W. L. Baragar, Manager
 Supertest (m.v.) W. H. Rees C. A. Reed

192 Pittsburgh Coal Co., 2300 Terminal Tower, Cleveland (Owner and Operator)
 W. G. Wilhelm, Lake Sales Manager; J. P. Doyle, Gen. Supt.
 Pittsburgh Thomas Burns

193 Pittsburgh Steamship Co., Rockefeller Bldg., Cleveland (Owner and Operator)
 W. P. McElroy, Fleet Captain; J. F. Wood, Fleet Engineer

B. F. Affleck	580-60-32	24	12,000	J. A. Smith	W. A. Churchill
Geo. F. Baker	580-58-32	12	11,300	H. J. Neeham	J. R. Bowermaster
Clarence A. Black	414-50-28	24	6,650	A. M. Everett	G. C. Morrison
E. J. Buffington	580-58-32	12	11,400	W. T. Simonds	W. F. Parker
Robert W. E. Bunsen	446-50-29'6"	24	7,100	W. J. Seligman	M. C. Smith
D. M. Clemson	580-60-32	12	12,200	A. C. Johnson	E. H. Oehlenschlager
Wm. G. Clyde	580-60-32	24	12,000	D. M. LeRoy	R. W. Townsend
Thomas F. Cole	585-58-32	12	11,500	R. W. Parsons	A. A. Lyman
E. C. Collins	416-50-28	24	6,700	J. E. Tomlin	S. T. Kemmerly
W. E. Corey	549-56-31	12	10,300	L. J. Bressette	O. J. Berger

108

Captain

Chief Engineer

Cornell	454-50-28'6"	24	7,100	Thor Nelson	E. W. Anderson
Geo. G. Crawford	585-60-32	12	11,700	Wm. Ward	Harry Barteldt
Wm. B. Dickson	580-58-32	12	11,500	E. D. Purdy	J. F. Oakley
Alva C. Dinkey	580-58-32	12	11,300	A. W. Dana	F. W. Leng
Wm. Edenborn	478-52-30	24	8,000	G. M. Sandiford	Earl Lockhart
Isaac L. Ellwood	478-52-30	24	8,000	J. M. Boyce	R. S. Curry
James A. Farrell	580-58-32	12	11,700	John Crerar	C. D. Reno
A. H. Ferbert	420-50-28	24	6,700	Geo. Davis	M. H. Smith
Wm. J. Filbert	585-60-32	12	11,700	Geo. Comins	F. J. Manion
H. C. Frick	549-56-31	12	10,500	C. J. Brinker	R. W. Armstrong
Robert Fulton	414-46-28	24	5,800	D. McDerimid	R. A. Evans
E. H. Gary	549-56-31	12	10,500	A. J. Winkel	Jas. Amenson
John W. Gates	478-52-30	24	8,000	R. A. DeWitt	F. F. Hunger
Harvard	454-50-28'6"	24	7,100	M. M. Crawford	M. O. Waldeland
A. F. Harvey	580-60-32	24	12,100	E. K. Male	W. T. Welsh
J. A. Hatfield	580-60-32	24	12,100	C. J. Kearns	J. T. Schei
James J. Hill	478-52-30	24	8,000	R. C. Hوجلund	R. I. Dillenbeck

Douglass Houghton	456-50-29	24	7,300	A. G. Waurzyniak	J. M. Mikell
Francis E. House	585-60-32	12	11,700	C. A. Wallace	L. B. David
John Hulst	586-60-32'6"	24	12,000	A. T. Patchett	C. A. Suttle
W. A. Irvin	586-60-32'6"	24	11,900	J. N. Rolfson	W. P. Bourlier
Horace Johnson	580-60-32	24	11,900	F. J. Wade	W. A. Lewis
D. G. Kerr	580-60-32	12	12,200	H. D. McLeod	Thos. Reinert

109

Thomas W. Lamont	580-60-32	24	12,000
R. V. Lindabury	580-60-32	24	12,100
Thomas Lynch	580-58-32	12	11,200
W. A. McGonagle	580-60-32	12	12,200
John McLean	414-50-28	24	6,700
Malietoa	454-50-28'6"	24	7,400
Mataafa	430-50-28'6"	24	6,900
Maunaloa	430-50-28'6"	24	6,800
Miller, Governor	586-60-32'6"	24	11,900
Pentecost Mitchell	416-50-28	24	6,600
J. P. Morgan Jr.	580-58-32	12	11,300
J. Pierpont Morgan	580-58-32	12	11,300
Samuel B. F. Morse	456-50-29	24	7,300
Simon J. Murphy	428-52-28	24	7,000
Wm. J. Olcott	580-58-32	12	11,500
Wm. P. Palmer	580-58-32	12	11,800
E. W. Pargny	580-60-32	12	12,300
Geo. W. Perkins	549-56-31	12	10,400
Henry Phipps	580-58-32	12	11,200
Orlando M. Poe	470-50-29	24	7,500
Princeton	454-50-28'6"	24	7,000
Queen City	400-48-28	24	6,100

Norman B. Ream	580-58-32	12	11,300
Rensselaer	454-50-28'6"	24	7,000
R. R. Richardson	416-50-28	24	6,700
Percival Roberts Jr.	580-58-32	12	11,700
H. H. Rogers	580-58-32	12	11,200
Wm. B. Schiller	580-58-32	12	11,500
McGilvray Shiras	420-50-28	24	6,700
Myron C. Taylor	580-60-32	24	12,000
Eugene P. Thomas	580-60-32	24	12,000
Richard Trimble	580-58-32	12	11,800
R. H. Watson	586-60-32'6"	24	12,000
Peter A. B. Widener	580-58-32	12	11,200
H. D. Williams	580-60-32	12	12,200
Zenith City	387-48-28	24	5,600
August Ziesing	580-60-32	12	12,000
Fritz (barge)	436-50-28'6"	24	7,900
Manila (barge)	436-50-28'6"	24	7,800
Roebling (barge)	436-50-28'6"	24	7,800
Smeaton (barge)	446-50-29'6"	24	8,000

194 Porter, J P., & Sons, Ltd., 936 Dominion Square Bldg., Montreal, Que.

Alice (tug)			
F. Dupre (tug)			

Captain

Chief Engineer

C. S. O. Christiansen	C. S. McIntyre
Ed. Palm	Conrad Sahlen
H. L. Buckley	H. E. Lickfeldt
W. H. McLachlan	P. F. McDonnell
Frank Wilcox	A. L. Haller
F. H. Pratt	A. A. Baker
C. M. Christensen	V. N. Ax
G. A. Lehne	E. F. Heckel
J. C. Murray	W. B. Danforth
F. L. Pagyi	E. A. Bradley
C. H. Johnson	H. W. Bremer
A. C. Penzenhagen	F. J. Goller
T. F. Burns	R. W. Hogle
W. H. Paver	W. H. Annesley
A. E. Nunn	A. K. Brake
C. C. Carlisle	C. C. Rector
Henry Osier	W. F. Oehlschlager
W. H. MacBeth	F. G. Hazen
Geo. C. Chambers	B. H. Hesler
F. H. Roach	F. J. Cunningham
M. Rushin	L. M. Morrison
R. F. Radike	Oscar Kihlstrom

Captain

Chief Engineer

D. E. Manuel	J. B. Bellow
Geo. Gay	H. F. Parker
C. J. Paver	C. A. Britton
F. Davenport	W. A. Marshall
Swen Fotland	Robert Conlon
A. H. Nielson	C. H. Savage
C. E. Gerlach	G. E. Anderson
H. Leisk	W. G. Staley
H. Ashby	H. W. Endelman
C. A. Horton	H. G. Rood
D. W. McLeod	Leland Haggan
D. T. Whitlock	A. L. Rhodes
R. C. Caughell	W. R. Miller
Frank Quinn	M. P. Heshour
Homer Johnson	G. R. Emrey
Iver Larsen	
D. J. Keefe	
Alf. Olson	
C. O. Hamet	
G. Livingstone	I. Houde
D. Pitt	A. Paquette

	Captain	Chief Engineer
Hector Porter (tug).....	L. Williams	W. Robar
Lawrence T. Porter (tug).....	R. Dykeman.....	J. A. McNeil
Rouille (tug).....	J. R. McLean.....	L. Sharkey
Delver (dredge).....	J. Gamble.....	W. MacIntyre
Fundy (dredge).....	A. Kennedy.....	C. Mather
Hallfax No. 25 (dredge).....	A. Doane.....	J. Shoultz
Shuniah (dredge).....	Gus Johnston.....	W. Pitts
195 Prescott & Ogdensburg Ferry Co. Ltd., Prescott, Ont. (Owner and Operator)		
S. J. Delaney, Port Captain; W. J. Jento, Superintending Engineer of Fleet		
Joseph Dubrule	Bolvin	R. Lashmar
Levis	Hugh Willard	W. Chretien
Presque Isle Transportation Co. (See Fleet No. 47)		
196 Pringle Barge Line Co., 309 Rockefeller Bldg., Cleveland		
Barkhamstead (tug)	J. B. Pringle	
Crusader (tug)	Eric Miller	
Constitution (barge)	J. H. Alexander	
Maida (barge)	Bert Peltier	
Sagamore (barge)	no appointment	
197 Provincial Paper Ltd., Port Arthur, Ont. (Owner and Operator)		
Strathbogie (tug)	W. C. Charlton.....	D. Lanktree
Thomas Maitland (tug)	not in operation	
Pure Oil Steamship Co. (See Fleet No. 94)		
198 Purvis, Capt. John, Gore Bay, Ont. (Owner and Operator)		
E. D. M. Purvis (tug)	John Purvis	Norman McDonald

	Captain	Chief Engineer
199 Pyko Towing & Salvage Co., Kingston, Ont. (Owner and Operator)		
Grant Pyke, Manager		
George T. Davie (barge)	Capt. MacDonald	
Hilda (barge).....	Capt. Johnson	
Salvage Prince (tug).....	G. Pyke.....	E. Reid
Salvage Queen	W. Felix.....	Thomas Campeau
Warrenco (barge).....	W. Botting	
No appointments for barges Anarco, Sand Boy and Stone Boy		
200 Quebec Harbour, National Harbours Board, (Owner and Operator)		
Aviso (tug)	not in operation	
201 Quebec & Ontario Transportation Co. Ltd., 680 Sherbrooke st., West, Montreal, Que.		
F. J. Byington, Superintendent		
Chicago Tribune (m.v.)	R. J. Brown	J. N. Fleming
Franquelin (m.v.)	F. V. McIntyre	W. Graham
Heron Bay (nee Robt. P. Durham)	H. Finn	W. E. Carr
New York News	George Ferguson	G. Coffin
Outarde (nee Brulin)	R. Leonard	W. Godkin
Shelter Bay	J. O. Beaudoin	G. Sweeting
Thorold	W. E. Redfearn	H. Collins
Red Arrow Steamship Co. (See Fleet No. 204)		
202 Reger & Werner Fish Co., Lorain, O. (Owner and Operator)		
George Edward (tug)	George Floro	
Barbara Jo (gas).....	Ed Witt	

Captain

Chief Engineer

Evelyn R. (gas)
 Francis R. (gas)
 Jerry W. (gas)

Al Snell
 Howard Cutcher
 Carl Werner

203 Reiss, C., Coal Co., Sheboygan, Wis. (Owner and Operator)

W. W. Newcomet, Manager; M. G. Cook, Fleet Engineer

Green Bay (tug) Harry Groh Michael Wirth
 William H. Armstrong
 Reiss (tug) Glen Bergerson L. Lewandowski

204 Reiss Steamship Co., Sheboygan, Wis. (Operator)

Reiss Steamship Co., Wilmington, Del. (owner)
 W. W. Newcomet, Manager; M. G. Cook, Fleet Engineer

A. M. Byers	504-54-30-12	9,300	James Rathburn	James Nelson
Reiss Brothers	580-60-32-24	11,800	Howard N. Leach	Alex McLaren
Clemens A. Reiss	430-50-29-24	6,950	Peter Sorensen	Willard F. Meter
J. L. Reiss	480-52-30		Wane Pringle	Henry Rake
John P. Reiss	504-54-30-12	9,400	John Hoff	John J. Maloney
Otto M. Reiss	420-52-28-12	7,200	H. L. Radcliffe	Sylvester Palumbo
Peter Reiss	504-54-30-12	9,300	Wm. Landon	John A. Richardson
Richard J. Reiss	430-50-29-24	6,900	D. C. Sullivan Jr.	L. F. Miller
Wm. A. Reiss	592-62-32-24	12,400	R. O. Frankforther	J. E. McNeill
Alex B. Uhrig	366-45-27-24	5,090	Joseph Le Page	William Harris
	Red Arrow Steamship Co. (owner)			
Jos. S. Morrow	420-52-28-12	7,350	Albert Olsson	John A. Nystrom

114

Captain

Chief Engineer

205 Rochester Shipbuilding Corp., Rochester, N. Y. (Owner and Operator)

Dolomite No. 2 E. A. Stroik Fred Meriz

206 Rockport Steamship Co., Sheboygan, Wis. (Operator)

Rockport Steamship Co., Wilmington, Del. (owner)
 W. W. Newcomet, Manager; M. G. Cook, Fleet Engineer
 (Both vessels are self-unloaders)

John A. Kling	430-56-31	7,000	M. A. Balzaire	Vincent C. Roth
Charles C. West	452-60-31	8,000	E. C. Burke	Sam Lorenz

207 Roen Steamship Co., Sturgeon Bay, Wis. (Owner and Operator)

John Roen (tug)	K. Svendsdahl	Ed. Johnson
John Roen Jr. (tug)	appointments not made	
City of St. Joseph (barge)	appointments not made	
Leona (barge)	appointments not made	
Transport (barge)	Sam Long	M. Defaut

115

208 Russell Construction Co. Ltd., Harbor Administration Bldg., Toronto, Ont.

J. O. Roddick, President
 R. C. Co. Tug No. 1 (nee Ethel) Ray Hand Gordon Hand
 Saginaw Dock & Terminal Co. (See Fleet No. 178)

209 St. Lawrence River Power Co., Massena, N. Y. (Owner and Operator)
 C. W. Peden, Assistant Superintendent

DeGrasse (tug)	E. J. Cline	C. Warner
William Hoopes (tug)	E. J. Cline	C. Warner

	Captain	Chief Engineer
210 St. Lawrence Steamship Ltd., E. S. Crosby & Co. Inc., Marine Trust Bldg., Buffalo, Managing Agents		
Algonquins	Clarence Crompton	Roy A. Milligan
Cheyenne	Wilford N. Morrison	Fred Sleep
Delaware	Joseph K. Corson	Colin MacDougall
Sioux	A. E. DeMill	Robert A. McEwen

Salzburg Transportation Co. (See Fleet No. 61)

211 Sarnia Steamships Ltd. of Sarnia, Ont., West st., Port Colborne, Ont. (Operator)		
Robert Scott Misener, Gen. Mgr.; John O. McKellar, Fleet Supt. and Engr. Sarnia Steamships Ltd. (owner)		
Joseph P. Burke	W. Cornett	J. Calvert
Chemong	J. A. Dennis	D. Munro
Drumahoe	W. A. Stewart	A. Barclay
Fairlake	J. W. Howey	R. Brown
Fairriver	C. H. Cole	R. Brett
Gilchrist	A. R. Rafuse	George Barrett
Houson	J. Halstead	C. Dunnett
Lockwell	G. B. Albinson	D. McKenzie
J. O. McKellar	A. G. McLean	A. Lyons
Scott Misener	F. J. Brady	J. L. Campbell
Portwell	J. W. Sharpe	J. Finlay
Starwell	J. Bowie	M. Crawford
	Colonial Steamships Ltd. (owner)	
Bayton	416-50-28 7,500	Joseph H. Glass
		K. B. DeMille

116

	Captain	Chief Engineer
Berryton	J. E. Stewart	Owen Williams
Easton	L. E. Pahn	A. Pruder
Laketon	C. E. Misener	A. McLaren
Mathewston	W. J. Moles	Fred Davison
Northton	M. Smith	W. Chambers
Riverton	E. C. Hawman	C. Reid
Royalton	C. R. Albinson	Victor Parker
Yorkton	J. A. Austin	E. J. Springthorpe

John P. Geistman	Lakehead Transportation Co. (owner)	J. S. Walton	A. Kinnear
	McKellar Steamships Ltd. (owner)		
Livingston		E. S. Bailey	T. Newham
Waterton		D. L. Wilson	J. G. Irwin
	Western Navigation Co. Ltd. (owner)		
Anna C. Minch	380-50-28 6,300	D. A. Kennedy	Vincent Reive

117

212 Fort Meigs	Scanes Boat & Dock, James, 401 Ohio st., Toledo, O.	James Scanes	Joseph H. Scanes
----------------------	---	--------------------	------------------

213 Philadelphia (tug)	Schlimpf, Mrs. Ina, 131 Grove st., Tonawanda, N. Y.	Clifford Schlimpf	Earl McDonald
------------------------------	---	-------------------------	---------------

Schneider Transportation Co. (See Fleet No. 47)

214* Scott, Thomas J., 66 March st., Sault Ste. Marie, Ont. (Owner and Operator)		
T. J. Scott (tug)		T. J. Scott
T. J. S. No. 1 (scow)		Ike Murray J. Biron

Captain

Chief Engineer

215 Shenango Furnace Co., 1961 Union Commerce Bldg., Cleveland (Operator)

Shenango Furnace Co., Pittsburgh (owner)
C. J. Peck, Manager; W. F. Riley, Superintendent

Col. J. M.

Schoonmaker590-64-33-12	12,600	F. M. HoodJohn Mansika
Shenango585-58-32-12	11,400	R. CarlsenChas. Volk
Wm. P. Snyder Jr.590-64-33-12	12,600	Frank H. OttAlbert Fritz

Sierra Steamship Co. (See Fleet No. 229)

216 Sincennes McNaughton Tugs Ltd., 635 Common st., Montreal, Que.

Joseph Simard, President; R. A. Campbell, Managing Director

Brighton (barge)	L. Herbert	
Cobourg (barge)	D. Morel	
Yvon Dupre Jr. (tug)	P. Bibeau D. Matte
Eureka (tug)	J. Couillard E. St. Germain
Felicia (tug)	Joseph Millette A. Lemay
Fire Chief (tug)	E. Blair D. Lavallee
Londonderry (barge)	Joe Campeau	
Mathilda (tug)	E. Houde J. Bernard
John Pratt (tug)	G. Couillard A. Caurnoyer
Pierre Racine (tug)	Z. Bibeau D. Belisle
Rival (tug)	Lewis Orr J. Lavallee
Sarnia City (tug)		
Fredmac (tug)		not in commission

118

Captain

Chief Engineer

217 Smith, Sidney E., 133 Admiral rd., Buffalo
Courtney (tug)

218 Sorel Harbour Tugs Ltd., Sorel, Que. (Owner and Operator)

No definite appointments made at beginning of season
Tugs Fraserville, Jean T., Joffre S., Marguerite T., Paul T., Jeanne T., Derrick St. Laurent, Barges No. 3, Therese T. and 17 tow barges of 500 to 1500 tons capacity.

219 South Chicago Coal & Dock Co., 222 West Adams st., Chicago, Ill.
Koalkraft Arthur J. Spotton Harry Zivney

220 Sowards, Capt. J. F. Kingston, Ont. (Owner and Operator)
Ptdoris W. Collins J. Lamoureux

221 Stadium Yacht Basin Inc., Foot of W. Third st., Cleveland
T. R. Zickes, Vice President

Albatross (tug) not in commission

222 Standard Oil Co., Whiting, Ind. (Owner and Operator)

F. D. Rexwinkle, Manager of Marine Dept.

(All vessels are tankers)

William P. Cowan	J. Taylor	J. R. Henry
Red Crown	N. Johnson	A. Lippie
Beaumont Parks	G. Carlson	A. Amolsch
Edward G. Seubert	E. Justmann	M. Swanson
Robert W. Stewart	H. A. Hansen	E. M. Smith
S. O. Co. "C" (barge)	S. Bruun	
Outagamie (tug)			not in commission

119

	Captain	Chief Engineer
223	Steel Products Transportation Co., Alexandria Bay, N. Y.	
J. Floyd Massey Jr.	C. A. Massey	Clarence Wells

224 Steinbrenner, George M., 706 Rockefeller Bldg., Cleveland (Operator)
 No appointments at opening of season
 Kinsman Transit Co. (owner)

Harry L. Findlay ..	532-56-31-12	10,200
Geo. M. Humphrey ..	586-60-32-24	12,000
Philip Minch	480-52-30-12	8,600
Henry Steinbrenner ..	420-50-28-24	6,900

225 Sullivan, D. & Co., 208 S. LaSalle st., Chicago (Operator)
 Gartland Steamship Co. (owner)

Back Bay	244-32-47	3,000	Norman Purser	F. J. Harmon
Bennington	238-42-22	3,000	Albert LaBlanc	John Rosenberg
Brandon	244-43-27	3,000		
Brockton	244-43-27	3,000	Andrew Andresen	James McCartin
Wm. E. Fitzgerald ..	420-52-28	7,000	W. S. MacQueen	Ray Langer
Sullivan Bros.	437-50-28-24	7,500	Walter Anderson	John Thomas
Wm. H. Wolf	504-54-30-12	9,600	Elmer Weborg	R. Elhamer

Sumatra Steamship Co. (See Fleet No. 229)

226 Tees Transit Co., 48 Sterling st., Hamilton, Ont. (Owner and Operator)
 Capt. T. A. Tees, Manager

C. W. Cadwell		Robert McKeen	George Kinchen
Sandland		C. Forbes	Alex Nicholson

Terminals & Transportation Corp. (See Fleet No. 162)

120

	Captain	Chief Engineer
--	----------------	-----------------------

227 Texas Co., Marine Dept., 332 S. Michigan ave., Chicago (Operator)
 Texas Co., 135 E. Forty-second st., New York (owner)

Harvey (tug)		H. S. Miller	L. Austin
Latin American (tug) ..		J. E. Murphy	B. Graf
Maine		R. E. Lee	M. Pelmas
Texaco 155 (barge)		F. Bowman	
Texaco 156 (barge)		D. M. Blackman	
Texaco 158 (barge)			

228* Thousand Isle Navigation Co. Ltd., foot of Brock st., Kingston, Ont.
 Steamers Champion and Frontenac not in operation, and offered for sale.

229 Tomlinson, G. A., 2900 Terminal Tower, Cleveland (Operator)
 Consolidated Steamship Co. (owner)

M. E. Farr	580-60-32-12	12,000
Continental Steamship Co. (owner)		
Chas. E. Dunlap ..	580-60-32-12	12,000
Duluth Steamship Co. (owner)		
Sylvania	504-54-30-12	9,400
Globe Steamship Corp. (owner)		
Cuyler Adams	474-52-29-12	8,400
Ball Brothers	480-52-30-12	8,900

121

	Captain	Chief Engineer
James Davidson ... 580-60-32-12 12,000		
	Inter Ocean Steamship Co. (owner)	
Jas. E. Davidson .. 504-54-30-12 9,400		
	Sierra Steamship Co. (owner)	
Sierra (self unloader)438-52-28	J. E. Daury.....	L. Gallagher
	National Steamship Co. (owner)	
Shasta 380-50-28-24 6,400		
Sparta 380-50-28-24 6,400		
	Sumatra Steamship Co. (owner)	
Sumatra (self unloader) 405-48-28	E. W. Gonyaw.....	H. J. Jewell
	Triton Steamship Co. (owner)	
Rufus P. Ranney...420-52-28-24 7,200		
	United Steamship Co. (owner)	
Col. E. M. Young...504-54-30	E. H. Cahours.....	A. M. Bartow

230

Toronto, City of Toronto, Ont. (Owner and Operator)

R. C. Harris, Commissioner of Works

G. R. Geary (tug)	F. T. Foulkes.....	T. S. Wilson
-------------------------	--------------------	--------------

	Captain	Chief Engineer
Ned Hanlan (tug).....	C. Niece	H. E. Baillie
(See also Fleet No. 231)		
231 Toronto Transportation Commission, 35 Yonge st., Toronto, Ont. (Operator)		
City of Toronto (owner). H. C. Patten, General Manager; D. A. Peters, Marine Supt.		
Aylmer (motor tug).....		
Bluebell		
Buttercup (motor launch)		
T. J. Clark		
William Inglis (m.v.).....		
Sam McBride (m.v.)		
Miss Simcoe (motor launch).....		
Trillium		
Miss York (motor launch).....		

(See also Fleet No. 230)

232 Transit Tankers & Terminals Ltd., 31 St James st., West, Montreal, Que. (Operator)

Ilororo	A. Daneau	R. Marchand
Transiter (m.v.)	R. Tremblay	W. C. Casstles
Translake	R. Chatel	E. Laplante
Transriver	O. Bibeau	A. Gagne

Tree Line Navigation Co. Ltd. (See Fleet No. 30)

Tri-Lakes Steamship Co. (See Fleet No. 172)

Triton Steamship Co. (See Fleet No. 229)

Captain **Chief Engineer**

234 **Trois Rivieres, City of Quebec (Owner and Operator)**

Phil. Bellevueille, Supt.

Cite des Trois-Rivieres.....	Honore Milot.....	Alfred Sauvageau
	Antoine Hamelin.....	Wilf. Lamothe
De Laverendrye	Camille Biron	Phil. Bouchard
	Murray Lewis.....	Henri Bouchard
	Eloi Toutant	

235 **Union Transit Co. Ltd., Excelsior Life Bldg., 36 Toronto st., Toronto**

Geo. R. Donovan, President

(Capacity in net tons at canal draft of 14 feet)

William Schupp	253-43-20	W. J. Brown.....	H. Fitzpatrick
----------------------	-----------	------------------	----------------

236 **U. S. Engineer Office, War Department, 540 Federal Bldg., Buffalo**

Philip G. Bruton, Major, Corps of Engineers, District Engineer in Charge

Burton (dredge)	John W. Wilke.....	Herbert W. Johnson
Churchill (tug)	Clark U. Jones.....	James Reed
Lockwood (survey boat).....	Geo. F. Meyers	
McDonough (tug)	Adrian Annal.....	Elmer J. Murphy
Quintus (diesel tug)		C. L. Sauberan
Black Rock (tug).....		Harry J. Ruddy.....
Savannah (dredge).....		James McCauley.....
Taylor (dredge).....		Arthur N. Erickson

124

Captain **Chief Engineer**

237 **U. S. Engineer Office, War Department, 932 Postoffice Bldg., Chicago**

Thomas Lincoln Casey (tug)..... not in commission

238 **U. S. Engineer Office, War Department, 605 Federal Bldg., Detroit**

Capt. A. Canfield (motor tender).....	Lawrence R. Barrett	Fernley J. Killips
Detroit (quarterboat).....	Joseph C. Watts	
Dixon (motor survey boat).....	Ralph R. Burgess	
Erie (derrickboat).....	Ernest W. Mattkee	
Col. J. D. Graham (motor tender).....	Gustav J. W. Jacobson	Clarence Miller
Merganser (derrickboat).....	Wilho A. Ala	
Alfred Noble (harbor tug).....	Orlaf F. Sullivan	Edwin G. McCartney
No. 3 (derrickboat).....	Chas. P. Sims	
Pioneer (motor tender).....	William F. Stepiantak	
Pronto (motor launch)	Philip McArthur	
St. Marys (quarterboat).....	Richard K. Felix	
Sault Ste. Marie (motor launch).....		
E. S. Wheeler (motor tender).....	Thomas G. Fairbairn	
Wolcott (motor survey boat).....	Harvey M. Hodge	William C. Brady

239 **U. S. Engineer Office, War Department, 408 Federal Bldg., Milwaukee**

Col. Charles J. Taylor, District Engineer; E. M. Nisen, Prin. Engineer

Cumberland (tug).....	Algie Alexander	Louis J. Hengartner
Kenosha (barge).....	Forest Olson	Allen M. Swan
Manitowoc (str.).....	C. C. Fowler	Wm. T. Toseland
Marinette (tug).....	Palmer E. LaPlante.....	Andrew Tollefson

125

G. G. Meade (dredge).....
 Menasha (tug).....
 Milwaukee (barge).....
 Neenah (tug).....

Captain	Chief Engineer
William Rosie	Jess G. Lanridge
Clifford E. Velte.....	David Clow
Albert R. Nielson ..	Franklin C. Struck
Lester G. LaPlante ...	Francis Vaughan

240 U. S. Div. of Naval Reserve, Ninth Naval District, Great Lakes, Ill.

(These vessels have no permanent engineer)

U. S. S. YP-61

U. S. S. YP-62

U. S. S. Dubuque.....

U. S. S. Sacramento.....

U. S. S. Paducah.....

U. S. S. Wilmette.....

U. S. S. Wilmington.....

U. S. S. C. No. 64.....

U. S. S. C. No. 330.....

U. S. S. C. No. 412

U. S. S. C. No. 432.....

U. S. S. YP-24

U. S. S. YP-25

U. S. S. YP-26

U. S. S. YP-27

U. S. S. YP-28

U. S. S. YP-29

Commanding Officer

Lt.-Comdr. F. D. Hurd, D-O, USNR

Lt.-Comdr. F. J. McManamon, D-O, USNR

Capt. R. T. Brodhead, D-V (G), USNR

Comdr. O. F. Heslar, DE-O, USNR

Comdr. A. O. Rabideau, D-O, USNR

Capt. E. A. Evers, D-O, USNR

Capt. A. F. Nicklett, D-O, USNR

Lieut. John J. Farnsworth, D-O, USNR

Capt. G. F. Schwartz, D-O, USNR

Lt.-Comdr. E. F. Kiefer, D-O, USNR

Lt.-Comdr. A. T. Pamperin, D-O, USNR

Lt. (jg) J. S. Horner, DE-O, USNR

Lt. (jg) W. C. Jackson, D-O, USNR

Comdr. O. F. Heslar, DE-O, USNR

Lt.-Comdr. M. A. Heffernan, D-O, USNR

Comdr. H. R. Harris, E-O, USNR

Lt.-Comdr. C. D. Finn, D-O, USNR

126

Captain	Chief Engineer
---------	----------------

U. S. S. YP-31

U. S. S. YP-32

Lieut. A. F. Block, D-O, USNR

Lt. (jg) Otto J. Helweg, D-O, USNR

241 United States Steel Export Co., 30 Church st., New York, N. Y.
 E. R. Cassidy, Agent

Steel Chemist (m.v.).....

SteeImotor (m.v.).....

Steel vendor

John G. Woerpel

Kristoffer Soreide

G. L. Kane.....

W. R. Wright

H. T. Petersen

James A. Merritt

242 United States Treasury Department—Coast Guard Vessels

Commander, Cleveland div., U. S. Coast Guard, Keith Bldg., Cleveland
 address Commanding officer
 Vessels in Cleveland division

Ossipee165 ft. cruising cutter

Tahoma165 ft. cruising cutter

Crawford125 ft. patrol boat

Diligence125 ft. patrol boat

Dix125 ft. patrol boat

Ewing125 ft. patrol boat

Frederick Lee.....125 ft. patrol boat

Jackson125 ft. patrol boat

Legare125 ft. patrol boat

Rush125 ft. patrol boat

CG-15375 ft. patrol boat

CG-17375 ft. patrol boat

CG-19275 ft. patrol boat

Sault Ste. Marie, Mich.

Cleveland, O.

Buffalo, N. Y.

Two Harbors, Minn.

Erie, Pa.

Alpena, Mich.

Toledo, O.

Rochester, N. Y.

Oswego, N. Y.

Marquette, Mich.

Wyandotte, Mich.

Port Huron, Mich.

Grosse Point Shores, Mich.

127

	Captain	Chief Engineer
CG-219	75 ft. patrol boat	Cleveland, O.
Amaranth	buoy tender	Duluth, Minn.
Aspen	buoy tender	Sault Ste. Marie, Mich.
Cherry	buoy tender	Buffalo, N. Y.
Crocus	buoy tender	Toledo, O.
Dahlia	buoy tender	Detroit, Mich.
Maple	buoy tender	Ogdensburg, N. Y.
Marigold	buoy tender	Detroit, Mich.
Tamarack	buoy tender	Detroit, Mich.
Walnut	buoy tender	Detroit, Mich.
Saint Mary's River Patrol		Sault Ste. Marie, Mich.
Commander, Chicago div., U. S. Coast	Guard. Room 816, New Postoffice Bldg.,	

Chicago

Vessels in Chicago division

Escanaba	cruising cutter	Grand Haven, Mich.
Antietam	125 ft. patrol boat	Milwaukee, Wis.
Nansemond	100 ft. patrol boat	Two Rivers, Wis.
Colfax	125 ft. patrol boat	Chicago
CG-119	75 ft. patrol boat	Chicago
AB-3	picket boat	Chicago
Hyacinth	lighthouse tender	Milwaukee
Hollyhock	lighthouse tender	Milwaukee

United Steamship Co. (See Fleet No. 229)

128

	Captain	Chief Engineer
243	United Towing & Salvage Co. Ltd., 635 Common st., Montreal, Que.	
	(Operator)	

A. F. Bowman (tug)	E. Koukera	M. Currie
Ponoka	C. Moore	
Strathmore (tug)	V. McCabe	J. Farquharson
Jas. Whalen (tug)	A. Morrison	J. Gehl
Coteau (barge)		
Iango (derrick scow)		
Strathbuoy (derrick scow)		

244 Upper Lakes & St. Lawrence Transportation Co., Ltd., Queen's Quay at Spadina ave., Toronto, Ont.

Frank B. Baird	A. H. Dixon	W. J. Collie
Blue Cross	C. C. Clattenburg	W. J. Pickard
Blue River	R. Bogie	S. E. Bonner
Brown Beaver	A. W. Beatty	Frank McInnis
Bryn Mawr (barge)		
Ralph Budd	A. E. McGee	M. Leatherdale
Norman P. Clement	H. L. MacDonald	Leo Sampson
William H. Daniels	J. B. Stephens	G. Murphy
Edwin T. Douglass	W. J. Ferguson	E. Boudreault
James B. Eads	John Hanley	E. L. James
John Ericsson	W. Beatty	J. Gilbert
Albert C. Field	A. E. Parrott	M. Gingras

129

Glenbogie (barge)
 Grey Beaver
 Judge Hart
 Alexander Holley (barge)
 John A. Holloway
 Charles R. Huntley
 Judge Kenefick
 Norman B. MacPherson
 Watkins F. Nisbet
 John S. Pillsbury
 Robert W. Pomeroy
 John J. Rammacher
 John B. Richards
 Sarnian
 Howard L. Shaw
 James Stewart
 Shirley G. Taylor
 George L. Torian
 Victorious
 William C. Warren
 Shelton Weed
 Barge 137

Captain **Chief Engineer**
 J. A. Buchanan J. Collingham
 W. E. Ogg H. B. Foote
 J. Gibson E. Carpenter
 O. Gulbranson A. Carrier
 F. Johnson Frank Camps
 J. E. McMurray J. Jones
 J. B. Scobie R. L. Bell
 G. Redfean Chas. Keleher
 W. J. Hawman G. Anderson
 Eric Fox F. Kelly
 T. Heffernan Wm. Prentice
 C. B. Kirk E. Hurley
 A. S. Cavanaugh A. Meihm
 F. Harpell George Miller
 F. McGowan J. J. McLeod
 J. Allan E. Powell
 A. N. Hogue G. Reid
 S. Tischart Gilbert Miller
 H. Welbanks H. Adams
 F. M. Burmister A. J. Burton
 Thos. Stephens

245 **Valley Camp Coal Co. of Canada Ltd., Port Colborne, Ont., and
 Victory Bldg., Toronto, Ont. (Owner and Operator)**
 Valley Camp 252-43-26 2,700 Bruce A. Nichols L. L. Crawford



Captain **Chief Engineer**
 246 **Vermilion Sand & Supply Co., The, Vermilion, O. (Owner and Operator)**
 Peter Full, Manager
 R. W. Holst Geo. Blaitner Geo. Lang
Virginia Steamship Co. (See Fleet No. 101)
 247 **Wabash Railway Co., Detroit (Owner and Operator)**
 Enoch Cram, Fleet Captain
 Norman B. Pitcairn and Frank C. Nicodemus Jr., Receivers, Railway Exchange
 Bldg., St. Louis
 Detroit (car ferry) J. I. Bufton
 Manistowoc (car ferry) A. Johnson C. E. Nantau
 George Yates
 Windsor (car ferry) R. Tobin E. J. Fitzgerald
 E. Cram
 J. J. Mahon D. A. Patterson
 248 **Walkerville & Detroit Ferry Co., Foot of Jos. Campeau ave., Detroit**
 E. Thibert, Superintending Engineer
 Essex
 Halcyon A. B. Bailey C. Lowry
 Wayne H. Lively L. M. Beauvais
 249 **Welch, Milo S., 1160 Portage, Sault Ste. Marie, Mich.**
 Bide-a-Wee (nee Pittsburgh)

Captain

Chief Engineer

250 Wells Construction Co., 1121 Schofield Bldg., Cleveland (Owner and Operator)

	R. A. Boccia, Fleet Captain		
Edward K. (tug).....	A. P. Johnson	L. Reilly	
North Harbor (tug).....	R. Hamilton	W. Voight	
Red Crown (tug).....	Oscar Tussell		
Lorene (tug).....	C. Bentley		
J. R. Sprankle (tug).....	John McIver	L. Moore	
Norman Kelley (derrick scow).....	Steve Boccia		
John H. Pellett (derrick scow).....	Hugo Grafton	Tony Campesi	
Wawasee (derrick scow).....	Guido Pierpouli.....	Don Stanton	
Welston (derrick scow).....	Toni Mahl	Peter Ranftl	

Western Navigation Co. Ltd. (See Fleet No. 211)

251 Wilson Transit Co., 960 Rockefeller Bldg., Cleveland (Owner and Operator)

	Captain Joseph S. Wood, President		
Chas. S. Hebard	504-54-30-12	9,500	Jos. Konkell
Robt. L. Ireland	504-54-30-12	9,600	Wm. F. Gardner
Edw. S. Kendrick	520-54-31-24	9,700	J. J. Phillips
A. T. Kinney.....	504-54-30-12	9,600	Roy F. Woodford
E. J. Kulas	580-60-32-24	11,700	George Stewart.....
Jas. McNaughton	580-60-32-12	11,700	M. A. Mausolf.....
A. W. Osborne.....	400-48-28-12	6,300	Peter Petersen
Chas. A. Paul	520-54-31-24	9,700	Arnold Pedersen.....
S. H. Robbins	444-50-29-24	7,100	Bertram Davies
Frank E. Taplin.....	420-52-28-12	7,100	William G. Coles.....
J. E. Upson.....	504-54-30-12	9,500	Henry C. Borgen.....
			Swan Swanson
			H. F. Bangs
			Edmund Landry
			Frank Heagerty
			Hans T. Meyers
			J. C. Reynolds
			John Norton
			Charles Schack
			Bernie Williams
			William McKenzie

132

Captain

Chief Engineer

Robt. B. Wallace.....	525-55-31-12	9,900	M. D. McQueen.....
Capt. Thos. Wilson	420-50-29-12	6,800	Arthur Mausolf

252 Wisconsin & Michigan Steamship Co., 350 N. Plankinton ave., Milwaukee (Owner and Operator)

L. N. Biron, President and General Manager; Mark T. McKee, Vice President			
Illinois			A. K. Hoxie
Missouri			not in commission
Nevada			A. K. Hoxie

253 Wolfe Island, Corporation, Wolfe Island, Ont.

Wolfe Islander			George Bates
----------------------	--	--	--------------------

254 Wyandotte Transportation Co., 1622 Ford Bldg., Detroit

N. H. Morgan, Manager; R. W. Smith, Superintending Engineer			
Alpena	356-47-27	5,500	John E. Broadwell
Conneaut	416-56-30	8,000	W. H. Yates
Huron	416-56-30	8,000	J. C. McCormick
Wyandotte	346-45-27	4,500	Henry F. Kresin
			Earl N. Wilson

255 Zenith Dredge Co., 403 Bradley Bldg., Duluth (Owner and Operator)

Donald B (tug).....			P. Hernbin
Fayling (tug).....			not in commission
Mystic (tug).....			not in commission
Alice Vivian (dredge).....			John V. Carlson.....
Dredge No. 2			Fred. C. Wright

133



2352 B

SUPERIOR PUMPS FOR ALL SERVICES

ESTABLISHED 1869

WRITE FOR
DEAN BROTHERS PUMPS / INC.
 INDIANAPOLIS / IND.

NEW CATALOG

323 W TENTH ST.

Directory of Shipbuilding and Ship Repair Yards on the Great Lakes

The American Ship Building Co.

GENERAL OFFICES

- Foot of West 54th street, N. W., Cleveland, O.
- G. A. Tomlinson, Chairman of Board.
 W. H. Gerhauser, President.
 J. L. Wallace, Assistant to President.
 J. E. Davidson, Vice President and Treasurer.
 G. W. Cottrell, Vice President and General Counsel.
 R. B. Ackerman, Secretary and Auditor.
 G. C. Sheidler, Assistant Secretary and Assistant Treasurer.
 J. C. Workman, Chief Engineer.
 E. G. Turner, Chief Draftsman, Engineering Dept.
 E. B. Williams, Naval Architect.
 John E. Steinman, General Superintendent.
 Fred L. Obert, Manager of Order Dept.

CLEVELAND PLANT

Foot of West 54th street, N. W.

James Thompson, Superintendent.

BUILDING BERTH: One; maximum size of ship, 750 feet.

REPAIR FACILITIES: Fully equipped, with dry dock, machine shop, boiler shop, sheet metal shop, pipe shop, joinery shop, electrical shop, pattern shop, etc., for making complete repairs to ships' hulls, engines, boilers, and auxiliary machinery. 80-ton shear legs.

DRY DOCK: Length over all 547' 0"; width of entrance at top, 65' 0"; depth over sill 12' 9".

FLOATING REPAIR EQUIPMENT: One self-propelled steam derrick scow with 10-ton lift; one motor boat, and one barge, all equipped

with air compressors, electric welding outfits, etc. Also, two delivery launches.

GENERAL INFORMATION: Carries complete stocks of propeller blades, grate bars, furnace fittings, auxiliary machinery parts, etc.

LORAIN PLANT

Colorado avenue,
Lorain, O.

Joseph B. Conley, Superintendent.

BUILDING BERTHS: Four; two for ships up to 735 feet, and two for ships up to 550 feet.

REPAIR FACILITIES: Fully equipped, with dry docks, machine shop, boiler shop, sheet metal shop, pipe shop, joinery shop, electrical shop, heavy forging shop, etc., for making complete repairs to ships' hulls, engines, boilers and auxiliary machinery. 80-ton shear legs.

DRY DOCKS: No. 1—Length over all, 586' 0"; width of entrance at top, 66' 0"; depth over blocks, 14' 6".

No. 2—Length over all, 736' 0"; width of entrance at top, 80' 0"; depth over blocks, 14' 6".

FLOATING REPAIR EQUIPMENT: Two barges, equipped with air compressors, electric welding outfits, etc. Also, one delivery launch.

TOLEDO PLANT

902-910 Water st.,
Toledo, O.

W. T. Riley, Superintendent.

REPAIR FACILITIES: Fully equipped for making topside hull repairs of all types, and complete repairs to engines, boilers and auxiliary machinery.

FLOATING REPAIR EQUIPMENT: One motor launch and one repair scow, equipped with air compressors, welding outfits, etc.

BUFFALO PLANTS

191-301 Ganson street, Buffalo, N. Y.

L. H. Reynolds, Superintendent.

REPAIR FACILITIES: Fully equipped, with dry docks, machine shop, sheet metal shop, pipe

TOLEDO SHIPBUILDING COMPANY, INC.

GENERAL OFFICE and PLANT

2245-2357 Front Street

TOLEDO, OHIO

Telephone

POntiac 1501-1502-1503-1504

CLEVELAND OFFICE
1548 ROCKEFELLER BLDG.

Telephone MAin7754

REPAIRS
DRY DOCKING
RECONSTRUCTION
NEW CONSTRUCTION

shop, joinery shop, electrical shop, etc., for making complete repairs to ships' hulls, engines, boilers, and auxiliary machinery. 80-ton shear legs.

DRY DOCKS: No. 1—Length over all, 470' 0"; width of entrance at top, 61' 10"; depth over blocks, 13' 6".

No. 2—Length over all 630' 0"; width of entrance at top, 81' 2"; depth over blocks, 13' 10".

No. 3—Length over all, 401' 0"; width of entrance at top, 53' 0"; depth over blocks, 14' 6".

FLOATING REPAIR EQUIPMENT: One self-propelled steam derrick scow with 10-ton lift, and one barge, both equipped with air compressors, electric welding outfits, etc. Also, two delivery launches.

Foot of So. Michigan ave., Buffalo.

REPAIR FACILITIES: Fully equipped for making topside hull repairs of all types, and complete repairs to engines, boilers and auxiliary machinery.

FLOATING REPAIR EQUIPMENT: One steam tug; one motor launch; one deck scow equipped with 10-ton derrick; two deck scows equipped with welding outfits.

CHICAGO PLANT

101st street and Calumet river,
South Chicago, Ill.

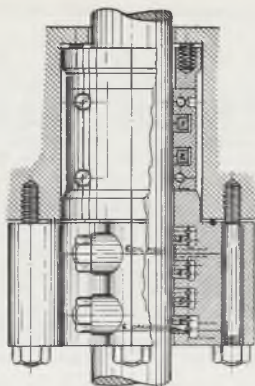
John Sinclair, Superintendent.

REPAIR FACILITIES: Fully equipped, with dry docks, machine shop, joinery shop, electrical shop, etc., for making complete repairs to ships' hulls, engines, boilers and auxiliary machinery. 80-ton shear legs.

DRY DOCKS: No. 1—Length over all, 570' 0"; width of entrance at top, 71' 8"; depth over blocks, 15' 0".

No. 2—Length over all, 727' 4"; width of entrance at top, 90' 2"; depth over blocks, 16' 0".

FLOATING REPAIR EQUIPMENT: One repair launch and one repair scow, both equipped



ANKORITE STYLE No. 669

This is a hi-pressure marine split type packing with pressure breakers in groove 1 and 2 in a floating case which are non-collapsible and are intended to cut down initial pressure on packing before it reaches the collapsible packing rings in grooves 3-4 and 5. A spring bushing holds parts firmly in place, the outer case is drilled and tapped for oil and drain connections. The lower pair of rings is designed to strip water from the rod to the drain provided, thus eliminating the moisture around rods. It is a known fact that this combination is adding years of service to the collapsible rings in grooves 3-4 and 5.

THE ANCHOR PACKING CO.

Headquarters

Philadelphia, Pa.

Metal Packing Div., Elyria, Ohio

Branches: Buffalo, 63 Andrews Bldg.; Cleveland, Ohio, 525 Rockefeller Bldg.; Chicago, Ill., 200 E. Illinois St.; Detroit, Mich., 169 W. Jefferson Ave.

with air compressors, electric welding outfits, etc. Also, one delivery launch.

SUPERIOR PLANT

Clough ave., and Third st., Superior, Wis.

R. J. Close, Superintendent.

REPAIR FACILITIES: Fully equipped, with dry docks, machine shop, joinery shop, electrical shop, etc., for making complete repairs to ships' hulls, engines, boilers, and auxiliary machinery.

DRY DOCKS: No. 1—Length over all, 609' 0"; width of entrance at top, 66' 0"; depth over sill, 13' 6".

No. 2—Length over all, 620' 0"; width of entrance at top, 66' 6"; depth over sill, 17' 6".

FLOATING REPAIR EQUIPMENT: Self-propelled steam derrick scow with 10-ton lift and equipped with air compressor, electric welding outfit, etc. Also, motor boat fitted with electric welder and air compressor.

Thomas B. Banner Boiler & Welding Co.

15 West Ohio street, Chicago, Ill.

John L. Banner, President.

GENERAL INFORMATION: Have repair facilities to do plate work above water line. Do any kind of boiler and welding work.

Canadian Vickers, Limited

Maisonneuve, Montreal, Canada.

J. E. LaBelle, President.

J. W. Savidant, Comptroller.

W. J. Wardle, Manager, Marine Department.

REPAIR FACILITIES: Fully equipped to handle any vessel coming to Montreal.

BUILDING BERTHS: Six; length 500 feet.

DRY DOCK: One floating dock, 600 feet long, operated in one or two sections.

NALCO WATER TREATMENT

offers many advantages to the Marine Engineer.

It keeps boilers and feedlines clean.

It is easy to handle. No measuring of chemicals.

No waste. No chemical burns.

No expensive feeding or blowdown equipment.

It is stored in 16 Great Lakes Ports.

Ask for "Nalco System for Marine Boilers".

NATIONAL ALUMINATE CORPORATION

6232 West 66th Place, Chicago, Illinois



The Collingwood Shipyards, Ltd.

Collingwood, Ont.

REPAIR FACILITIES: Fully equipped for all kinds of repairs to steel or wooden vessels—engines, boilers and auxiliaries.

BUILDING BERTHS: Five.

DRY DOCKS: No. 1—518' by 56' 0"; at entrance.

No. 2—412' by 95' 0" at entrance.

LIMITING CONDITIONS: 14' 0" draught.

Defoe Boat & Motor Works

Bay City, Mich.

H. J. Defoe, Manager.

W. E. Whitehouse, Asst. Manager.

A. D. Defoe, Purchasing Agent.

Albert Johnson, Superintendent.

MARINE RAILWAY—500 tons.

Great Lakes Engineering Works

River Rouge, Mich.

F. G. Morley, President and Treasurer.

George B. Turnbull, Vice Pres. and Gen. Mgr.

R. C. Lakin, Secretary.

Dwight True, Naval Architect.

Howard M. Varian, Chief Engineer.

C. E. Baisley, Yard Manager.

REPAIR FACILITIES: Complete for ship, engine and machinery repairs.

BUILDING BERTHS: Three, 800 foot ship.

DRY DOCKS: No. 1—Steel floating dock 626' over all.

No. 2—Steel floating dock, 162' over all.

ASHTABULA, OHIO, PLANT

Leonard Feldmeyer, Yard Manager; Ed. MacKenzie, Superintendent.

REPAIR FACILITIES: Complete for ship, engine and machinery repairs.

FUEL DOCK

at

Ecorse-Michigan

On Detroit River alongside
Great Lakes Shipyard

Automatic Weigh Scales

Conveyor Belt Delivery

Quality Coal—Fast Fueling

Capacity 600 tons per hour

Nicholson Terminal &
Dock Company

Telephone:

Scott B. Worden Vinewood 2-4305
Mgr. Fuel Dept. Detroit

BUILDING BERTHS: One; 800 foot ship.
DRY DOCK: Concrete dock, 650' over all.

DETROIT, MICH., PLANT

W. Roemer, Manager.

REPAIR FACILITIES: Complete for engine and machinery repairs.

The Great Lakes Towing Co.

General Office

1800 Terminal Tower, Cleveland, O.

Yard

Foot Jefferson St., Cleveland, O.

C. W. Willett, President.

M. H. Wardwell, Secretary and Treasurer.

H. N. Hobart, Assistant to the President.

REPAIR FACILITIES: Repairs on either steel or wooden tugs and other small craft either steel or wood hulls.

DRY DOCKS: Floating dry dock 80 feet long, with minimum clearance between the towers of 33 feet.

LIMITING CONDITIONS: Can dock tugs and small craft not exceeding the dimensions given above and drawing not more than 12 feet of water.

Kingston Shipbuilding Co., Ltd.

KINGSTON, ONTARIO, PLANT

REPAIR FACILITIES: Fully equipped for all kinds of repairs to steel or wooden vessels—engines, boilers and auxiliaries.

BUILDING BERTHS: Two.

DRY DOCK: No. 1—379' 6" by 55' 0" at entrance.

LIMITING CONDITIONS: 16' 0" draught.

Manitowoc Ship Building Co.

Manitowoc, Wis.

Charles C. West, President.

**Thomas B. Banner
Boiler & Welding
Company**

John L. Banner

Plate Work

Boiler Repairing

Ship Carpenters

Dock Repairing

Machinists

Electric and

Acetylene Welding

Engineer's Supplies

Day Phones { *Superior 7269*
Delaware 1528

Night Phones { *Buckingham 2821*
Palisade 1754

Chicago, Ill.
15 West Ohio Street

A. L. Nash, Vice President and Treasurer.
J. E. Thiel, Secretary.
A. P. Rankin, Vice President, Chief Engineer.
J. A. Egan, Assistant Treasurer.
W. L. Wallace, General Manager and Naval Architect.
H. A. Meyer, Purchasing Agent.
A. L. Pitz, General Superintendent.
J. J. Norris, Superintendent (Boiler Works).
John D. West, Superintendent Machine Shop.
REPAIR FACILITIES: Full facilities for boiler, machinery and hull repairs.
BUILDING BERTHS: Three; 600 feet.
DRY DOCKS: No. 1—Floating dock 650' x 70'.
GENERAL INFORMATION: Maintain complete facilities for all classes of ship repairs, also furnishing of stores and supplies.

Marine Iron & Ship Building Co.

Foot 11th ave., West Duluth, Minn.

A. W. Leraan, President.
A. W. King, Vice President.
John Geistman, Secretary-Treasurer and General Manager.
A. Halvorson, Naval Architect.
Swan Larson, Superintendent.
L. A. Willman, Purchasing Agent.
REPAIR FACILITIES: Hull and engine.
BUILDING BERTHS: Two; 300 feet.
DRY DOCK: Floating, 1500 ton.

A. B. McLean & Sons

Brock Street Dock

Sault Ste. Marie, Ontario

Capt. R. A. and John McLean, Managers.

REPAIR FACILITIES: Machine shop. Air compressors. Electric arc welding outfit, etc. for making complete repairs to hulls, engines, boilers and auxiliary machinery.

HARRY SAEFKE
 Phone: Lakeside 1205

AL NIENOW
 Phone: Lakeside 594

OFFICE PHONE: MARQUETTE 3488

SAEFKE & NIENOW

POWER

ENGINEERS SUPPLIES

MARINE REPAIRS OF ALL KINDS

Pipes, Valves and Fittings

Packings of All Kinds

Machine Shop in

Connection

830 North Fourth Street, MILWAUKEE, WIS.

DRY DOCK: Floating dry dock. Length over all 112'. Width of entrance at top 49' 6". Depth over blocks 13'.

Midland Shipyards, Ltd.

Midland, Ontario

R. M. Wolvin, President.

John S. Leitch, General Manager.

Geo. L. Cole, Secretary

J. M. McPherson, Treasurer.

James Wilkinson, Manager.

Arthur B. Clark, Chief Engineer.

REPAIR FACILITIES: Fully equipped for boiler or engine repairs.

BUILDING BERTHS: One at 650' or two at 265'.

Port Arthur Shipbuilding Co., Ltd.

Port Arthur, Ont., Can.

R. M. Wolvin, President.

J. S. Leitch, Vice President.

G. F. McDougall, Manager and Secretary-Treasurer.

L. E. Tornroos, Naval Architect and Chief Engineer.

H. W. Walton, Shipyard Superintendent.

REPAIR FACILITIES: Complete facilities for repairs to hulls, engines, boilers and auxiliaries.

BUILDING BERTHS: Two, 650' long.

DRY DOCK: One 700' long, 98' wide. Water over sill at normal lake level 16'.

Sturgeon Bay Ship Building & Dry Dock Co.

Sturgeon Bay, Wis.

Capt. John Roen, President.

William J. Wolter, Secretary and Treasurer.

Walter W. Haertel, Naval Architect.

BUILDING BERTHS: Three.

MARINERS' MANUAL OF THE GREAT LAKES

CONTENTS

PART I: WHAT AN OFFICER SHOULD KNOW:

The watch officer—Bearings—Speed of ship—Pelorus—Symbols and signals—Tonnage—Loading—Stress—Strain—Gravity—Stability—Load limit requirements.

PART II: THE RIVERS:

St. Marys river—St. Clair river—Lake St. Clair—Detroit river—Buoyage—Vessel lights—Lifeboats—Life rafts.

PART III: THE COMPASS:

Magnetic liquid compass—Dry compass—Compass variation—Compass deviation—Heeling error—Compass compensation.

PART IV: 500 QUESTIONS AND ANSWERS:

Invaluable in studying to become a deck officer—a quick and simple means of determining proper procedure under varying actual conditions.

Order Your Copy Today—\$5.00 Postpaid

(Orders for delivery in Ohio add 15c for compulsory 3% State sales tax.)

This is the first authoritative book containing complete information on navigation, loading and ship management published exclusively for ship masters, operating officers and seamen on the Great Lakes. See page 38 for further descriptive information.

Order Your Copy Today

THE PENTON PUBLISHING CO.

Book Department

Cleveland, Ohio

DRY DOCKS: No. 1—100'.
No. 2—70'.
No. 3—200'.

Toledo Shipbuilding Co. Inc.

General Offices,
2245-2357 Front St.
Toledo, O.

- F. B. Hufnagel, Chairman of Board.
J. Burton Ayers, President and Treasurer.
M. M. Wilkinson, Vice President and General Manager.
C. V. Romstadt, Secretary and Assistant Treasurer.
J. F. Rawlinson, General Superintendent.
W. F. Powers, Naval Architect.
J. O. Crafts, Chief Engineer.
C. J. Woelfle, Chief Draftsman, Hull Department.

REPAIR FACILITIES: Complete facilities for building and repairing all kinds of steel vessels, engines, boilers and auxiliary machinery including machine shop, boiler shop, sheet metal shop, electric shop, pipe shop, joiner shop, pattern shop, foundry, gantry cranes, locomotive cranes, crawler cranes, shear legs, etc.

FLOATING REPAIR EQUIPMENT: Launch and work scows equipped with air compressor, electric welding equipment, and other equipment as required.

BUILDING BERTHS: Three: capacity for vessels up to 650' in length.

DRY DOCKS: No. 1—Concrete with steel gate; length 690', width 96', depth over sill 14' 6".
No. 2—Wood, with steel gate; length 560', width 80', depth over sill 13' 0".

GENERAL: Carries complete stock of material and parts required in ordinary repairs or replacements.



Stewards Who Serve

APPLE FRUIT SYRUP

at the Captain's table,
get top rating.

•
*All Select Varieties
of Apples on Hand
at All Times.*

APPLE CONSERVATION ASSOC.

Telephone MAin 5968 MAIn 0623
1312 N.B.C. Building Cleveland, Ohio

International Fumigators Reg.

Manufacturers of
MARINE FLY SPRAY

"On the Great Lakes for 50 Years"

Contract Service the Year 'Round
S.O.S. Calls No Matter Where You Are

CLEVELAND PHONES: MAIN 5968 AND 0623.

Immediate Service

•
GEO. C. PICKHARDT

BUFFALO CLEVELAND
35 No. Division St. 1311 N. B. C. Building

Port Directory and Where-to-Buy

ASHTABULA, O.

Boilers—GEARY BOILER WORKS, Welding and Repairing Marine and Stationary boilers. Phone: 5801 and 5101.

General Machine Work—McKINNON IRON WORKS CO., 493 E. 5th St. Electric Welding, Boiler Work, Castings—Deck Engines. A-1 parts for Chase Deck Engines. Gauge Glass Fixtures.

Laundry—ELECTRIC LAUNDRY CO., THE, 1407 W. 6th St. Launderers, Carpet Cleaners, Dry Cleaners. 50 years of high grade service to The Marine Trade.

Meats—RENNICK, TOM J., 1104 West 5th St. High grade Meats and Poultry. Day and night delivery service to Marine trade. Phone 5338, Residence 5354.

BUFFALO, N. Y.

Attorneys at Law—BROWN, ELY & RICHARDS. Attorneys at Law, 1317 Chamber of Commerce. Telephone, Washington 5961.

Boilers—NICHOLSON & HALL BOILER & WELDING CORP. Office—174 Ohio St. Boilers, Tanks and Stacks Repaired. All kinds of Electric Welding. Marine work a specialty. Phone: Washington 3500.

Boilers—OLDMAN BOILER WORKS, INC., 32-42 Illinois St. Marine work a specialty. Electric welding. Boiler Repairing, day or night. Phone: CLEVELAND 0932; Night Phones: ABBOTT 0418-J, DELAWARE 5903, or DELAWARE 2917.

Boilers—TASHENBERG BROS. BOILER WORKS, 43-47 Illinois St. Office phone: CLEVELAND 1307. Marine work our specialty. Electric Welding and Air Plant. Day and night service.

THE RINKLEFF Hardware Co.

121-125 W. Water St.

SANDUSKY

Local distributor for Upson-Walton Products. A complete line of ship hardware including:

PACKING-PIPE-VALVES

24 hr. service 7 days a week.

Day
Phone 18

Night
Phone 2274

BUFFALO, N. Y. (continued)

- Groceries**—GUNN, P. J., 54-60 Michigan Ave., Corner Elk St. Groceries and Marine Supplies. Phone WASHINGTON 1189. Night Phone ABBOTT 0779.
- Meats**—GEHM, JOHN, 1-3-4-5-7 Elk St. Dealer in choice meats of all kinds. Phones: BELL 1204; SENECA 21134.
- Packing**—ANCHOR PACKING CO., THE, 67 Andrews Bldg. Phone: Seneca 5258.
- Proctor in Admiralty**—W. M. CONNELLY, Wall-ridge Bldg.
- Ranges (Galley)**—RUSSELL & WATSON, INC., 94-96 Pearl St. Phone: Wash. 0585.
- Repairs**—FORD BROS., INC., 23-29 Illinois St. General Machinists, Cylinders and Valves bored in position; Ice Machine Repairing; Calibrating Gauges. Phone: CLEVELAND 4677. Night Phones: Williamsville 457-J, TRIANGLE 6576, PARKSIDE 7443.
- Repairs**—MOLLENBERG-BETZ MACHINE CO., INC., 20-26 Henry St. General Repairs of Engines, Pumps and Refrigerating Machinery. Ammonia fittings carried in stock. Cylinders and valves bored in position. Phones CLEVELAND 7138 and 7139.
- Repairs**—READING, E. H., 226 Ohio St. Marine Repairs and Propeller Wheels Our Specialty. Brass and Iron Castings. Phone WASHINGTON 5361.
- Shipbuilders**—AMERICAN SHIP BUILDING CO., THE, Buffalo Dry Dock Plant: 191-301 Ganson St. Telephones: CLEVELAND 4055 and 4056. Buffalo Lake Erie Plant: Ft. of So. Michigan Ave. Telephone: WASHINGTON 0602. Hull, engine and boiler repairs; dry-docking; launch service.
- Ship Chandlers**—UPSON-WALTON COMPANY, THE, 182 Ohio St. Telephone: CLEVELAND 4027. Ship Chandlery. Wire and Manila Rope. Tarpaulins, Tackle Blocks, Meats and Groceries, Engineer's Supplies.
- Supplies**—SIDNEY E. SMITH, 708 Dun Bldg. Telephone: WASHINGTON 8732. Marine Equipment. Marine Surveying & Consulting.

W. B. BOOM, Pres. & General Mgr.
Phone MAIn 8785
**THE BOOM BOILER
& WELDING CO.**

Every Known
Method of Weld-
ing Done by Us at
Our, or Your Plant

Floating Plants
for
Marine
Work



Fully
Equipped
Machine
Shop

*Repairs a Specialty
Any Place, Any Time*
Center & Hemlock Sts.
Cleveland, O.

AMERCOTE

The use of Amercote by many Great Lakes boat companies has proven it to be the most economical hull coating sold.

THE AMERICAN OIL AND PAINT COMPANY
9915 Harvard Ave., Cleveland, Ohio

Milwaukee, Wis. 2217 S. First Street
Phone: Sheridan 0111

**GENERAL MACHINISTS
REFRIGERATION ENGINEERS**
Engine Repairing

THE VILTER MFG. COMPANY

CHICAGO, ILL.

- Boiler Compound**—NATIONAL ALUMINATE CORP., 6232 W. 66th Place. Scientific Treatment of Boiler Feedwater.
- Boiler Repairing**—BANNER, THOMAS B., BOILER & WELDING CO., 15 West Ohio St.
- Boiler Treatment**—DEARBORN CHEMICAL CO., 310 S. Michigan Ave. Rust Preventive. Scientific water treatment.
- Packing**—ANCHOR PACKING CO., THE, 200 E. Illinois St. Phone: SUPERior 5249.
- Packing**—CRANE PACKING COMPANY, 1800 Cuyler Ave. Phone: BUCKingham 1800.
- Provisions**—BEN CHALEM, 514 Rush St. Meats, Groceries, Vegetables, Fruits, Ship Supplies and Laundry. Phones: Delaware 8786-8787. Night Phone: Delaware 2160.
- Rubber Goods**—QUAKER RUBBER CORP., 2035 S. Michigan Ave. Phone: Victory 0616. Also P. P. P. Rod Packing, Ebonite Sheet Packing, Ebonite Stop Valve Packing and Pump Valves. Hose for all purposes.
- Shipbuilders**—AMERICAN SHIP BUILDING CO., THE. Chicago Plant: 101st St. and Calumet River. Telephones: REgent 2000 and 2001. Hull, engine and boiler repairs; drydocking; launch service.
- Supplies**—UPSON-WALTON COMPANY, THE, 737 West Jackson Blvd., Telephone: HAYmarket 6380. Ship Chandlery. Wire and Manila Rope, Tackle Blocks and Tarpaulins.
- Valves**—KECKLEY, O. C., CO., 400 West Madison St. Steam Traps, Temperature and Pump Regulators, Blow-off Valves, Water Gauges, Gauge Cocks, and Strainers.

CLEVELAND, O.

- Architects (Marine)**—SMITH BROTHERS, 956 Rockefeller Bldg., Marine Architects, Surveyors and Appraisers.
- Bank**—CENTRAL NATIONAL BANK, 308 Euclid Ave.

Sidney E. Smith

*Marine Surveying and Consulting
Marine Equipment*

Post's Motor Marine Babbitt
Oldman Patented Fairleaders
O. C. Keckley Regulating Valves
Patented Swing Bolt Stuffing
Box Water Gauge Fixtures and Other
Specialties, Write for Catalog.
Lockwood-Carlisle Piston Rings
Exclusive Rights of Hynd's Patented
Bridge Walls

708 Dun Building Buffalo, N. Y.
Washington 8732

**DURABLE MANUFACTURING
COMPANY**

114 Liberty Street, N. Y.



Re-valve with DURABLE
Compressor and Pump
Valves. Standard equip-
ment with Leading Pump
& Engine Builders.

THE CLEVELAND STEAM GAUGE COMPANY

1100 West 9th MA. 5838
Cleveland, Ohio LA. 2050

RUF HYDRAULIC WHISTLE BLOWER

**PUMP — ENGINE — MACHINE
REPAIRS OF ALL KINDS**

Agents for: Durabla Pump Valves — Ernst
Water Columns — Crosby Safety Valves

CLEVELAND, O. (continued)

- Bank**—SOCIETY FOR SAVINGS, Public Square.
- Boiler Compound**—PASSIVATION PRODUCTS CO., THE, 1311 N. B. C. Bldg. Passivation products obtainable at all ports.
- Books**—PENTON PUBLISHING CO., THE (Book-Department), Penton Bldg., Lakeside and W. 3rd St. We can supply any book in print.
- Chains** — NATIONAL MALLEABLE & STEEL CASTING CO. 10600 Quincy Ave., Cleveland, O.
- Coal**—PITTSBURGH COAL CO., Terminal Tower. Best steamboat coal, 24 hours service at all Lake Erie Ports. Fuel Lighter at Cleveland.
- Dry Goods (Wholesale)**—ROOT & McBRIDE CO., THE, 1250 West 6th St. Phone: MAin 4405. Bedding, Linens, Curtains and Floor Coverings. See page 6.
- Fruits and Syrups**—APPLE CONSERVATION ASSOCIATION, 1312 N. B. C. Bldg., Phones: MAin 5968, 0623. Select Apples, Apple and Strawberry Juices and Syrups.
- Fumigators** — INTERNATIONAL FUMIGATORS REG., 1311 N. B. C. Bldg. Fly Spray. Contract Fumigators. Immediate service at all ports. Cleveland Phones: MAin 5968, 0623.
- Furniture (Steamboat)** — LEOPOLD BROTHERS FURNITURE CO., Lorain and W. 30th St. Phone: MElose 2324.
- Gauges**—CLEVELAND STEAM GAUGE CO., 1100 W. 9th St. Gauge manufacturers. We repair gauges and valves of every description.
- General Machine Work**—GEDEON MACHINE AND TOOL CO., 1011 Power Ave. General Machine Work on Engines, Pumps. Makers of Nautical Instruments, Pelorus, Bearing Indicators. Magnetic Compass Adjusting. Phone: MAin 4655; Res.: BO 3473.
- Hatch Fasteners**—MULHOLLAND HATCH FASTENER CO., THE., 1276 West 3rd St. Manufacturer of Simplex Security Mulholland Fasteners.
- Lubricants** — STANDARD OIL COMPANY OF OHIO, THE, National City Bldg., "SOHIO" Marine Lubricants.

Diesel Oils
all specifications

Bunker A, B & C

By Lighter or at Dock
Ecorse, Michigan

*Enquiries solicited for all
Ports on the Great Lakes*

Fuel Oil Corp.

Phone: CHerry 3880
Night: Vinewood 2-0240 or 2-9169
Detroit, Michigan

Gassers
GOOD THINGS TO EAT

DULUTH-SUPERIOR HARBOR
Groceries Meats Fish Bakery
OPEN ALL NIGHT

F. L. Berkheiser, *President* Phone
W. T. McAuley, *Market Mgr.* MElose 840

E. H. READING



PROPELLER WHEELS
CASTINGS
MACHINERY REPAIRS

Washington 5361 226 OHIO STREET, BUFFALO, New York

CLEVELAND, O. (continued)

- Packing**—ANCHOR PACKING CO., THE, 525 Rockefeller Bldg. Phone: PROspect 2748.
- Packing**—CRANE PACKING CO., Fred M. Harmon, 380 Rockefeller Bldg. Phone: PROspect 5543.
- Packing**—DISCH, JNO. J., CO., 6109 Franklin Blvd. Phone: WOODbine 6717; Day or night.
- Packing**—FRANCE PACKING CO., 407 The Arcade. Phone: MAIN 5687.
- Paints**—AMERICAN OIL & PAINT CO., 9915 Harvard Ave. The use of Amercote by many Great Lakes boat companies has proven it to be the most economical hull coating sold.
- Paints (Marine)** — FERBERT - SCHORNDORFER CO., 12815 Elmwood Ave.
- Penetrol**—FLOOD CO., THE, 6217 Carnegie Ave., Manufacturers of Penetrol.
- Paints**—SHERWIN-WILLIAMS CO., THE, 601 Canal Rd., N. W. A full line of high quality Marine Paints, Varnishes and Enamels.
- Provisions**—HAUSHEER & SONS CO., THE, 1220-1228 W. 11th St. Meats, groceries, vegetables, fruits, ship supplies and Laundry. Phone: MAIN 1580. Night Phone: CLEARwater 6858.
- Repairs (Steam-Electric)** — WESTINGHOUSE ELECTRIC & MFG. CO., 1216 West 58th St. Complete shop facilities, expert workmen, best materials. On call day and night. Phone: MELrose 8600.
- Ship Repairs**—RUD MACHINE CO., THE, 1036 W. 11th St. Hull, Boiler and Machine Work. Phone: CHerry 3883-3884.
- Shipbuilders**—AMERICAN SHIP BUILDING CO., THE, Main Office and Cleveland Plant: Foot of West 54th St., N. W. Telephone: WOODbine 2280. Hull, engine and boiler construction and repairs; dry-docking; launch service.
- Supplies**—PATTISON, W. M., SUPPLY CO., THE, 777 Rockwell Ave. Mooring Lines, Valves, Marine Scaling Hammers, Drills, Grinders, Boat Falls, Signal Halyards and Rat Lines. Telephone: MAIN 7320.

MERTES-MILLER, INC.

*Ship Repairs, Blacksmithing,
Boiler Repairing, and Electric Weld-
ing by U. S. Marine Certified
Welders.*

Telephone: Mitchell 7570

Night West 0653-R Edgewood 0792-J

1561 S. Barclay St., Milwaukee, Wisc.

Beeagle's
Better Foods

Wholesale Steamship Supplies
Marine Phone City Phone
ADams 3717 MAIn 4181
36 No. Superior St. Toledo, Ohio

JAMES MURPHY COAL COMPANY
**Steamboat Coal Fueling
Facilities**

Splint & Elkhorn Steam Coals
KAMINISTQUIA RIVER, FORT WILLIAM, ONT.
Dock Phone Office Phones
South 1744 South 8, 84 & 88
Night Calls—South 1579, South 19

CLEVELAND, O. (continued)

- Supplies**—THOMSON, J. & A., CO., 1228-1232 W. 11th St. Marine Engineers' Supplies. Phone: MAIN 0077; Night: ACademy 2260.
- Supplies**—UPSON-WALTON CO., THE. 1294-1310 W. 11th St.
- Tarpaulins**—C. R. DANIELS, INC., 1327 St. Clair Ave. Tarpaulins, Boat Covers, Marine Canvas work. Manufacturers of everything of Canvas. Phone: MAIN 2638.
- Water Gauges**—RELIANCE GAUGE COLUMN CO., 5902 Carnegie Ave. Water Gauges and Boiler Safety Devices.
- Welding**—BOOM BOILER & WELDING CO., THE. Center and Hemlock Sts. Fully equipped Machine Shop. Repairs a Specialty.

DETROIT, MICH.

- Fuel Oil**—FUEL OIL CORPORATION, Ecorse, Michigan. Phone: CHerry 3880. Night Phone: VIneyard 2-0240 or 2-9169.
- Packing**—ANCHOR PACKING CO., THE, 169 W. Jefferson Ave. W. Phone: RAndolph 4975.
- Packing**—CRANE PACKING CO., 1720 12th St., Phone CADillac 2323.
- Repairs (Steam-Electric)** — WESTINGHOUSE ELECTRIC & MFG. CO., 5757 Trumbull Ave. Complete shop facilities, expert workmen, best materials. On call day and night. Phone: TRinity 2-7010.
- Supplies**—EDWARDS, H. D., & CO., 175 E. Larned St., Manila Rope, Wire Rope, Logs, etc. Phone.: RAndolph 7311.
- Tarpaulins**—C. R. DANIELS, INC. 2383 W. Fort St. Tarpaulins, Hatch cloths, Boat Covers, Marine Canvas Work. Prompt service. Phone: LAfayette 3044.

DULUTH, MINN.,

- Provisions**—GASSER, M. M., CO., 209-211 West Superior St. Groceries, meats, fish, fruits, bakery, ship supplies. Open all night. Phone: Melrose 840.



MARINE
Paints—Varnishes—Enamels
for every requirement

THE FERBERT-SCHORNDORFER CO.

Cleveland, O.

Warehouse stock Upson-Walton Co.
 Buffalo

BERGLUND'S

Port City Jobbers

Muskegon—Michigan

Groceries—Meats—Produce

Phone 23-576

Nite Phone 53-134

**GEARY BOILER WORKS
AND ELECTRIC WELDING**

Welding and Repairing Marine and Stationary Boilers a Specialty. Results tested and approved by U.S. Inspectors.

FRANK GEARY, Proprietor Phones: 5001-5101

ASHTABULA HARBOR, O.

ECORSE-DETROIT, MICH.

Fuel—NICHOLSON TERMINAL & DOCK CO.
Quality Coal—Fast Fueling. Phone Vinewood
2-430.

ELGIN, ILL.

Deconcentrators—ELGIN SOFTENER CORP. Mud,
Sludge and Scale removed from boilers by
Chemical Treatment.

ELYRIA, OHIO

Tools—RIDGE TOOL CO., THE.

ERIE, PA.

Supplies—MEISER, CARL H., 818 Peach St.
Marine Meats and Groceries. Day and Night
Launch Delivery. Phones: 23-637 and 23-638.
Residence Night Calls: 65-110.

FORT WILLIAM, ONT., CANADA

Coal—MURPHY, JAMES, COAL CO. Kaministiquia
River.

Repairs—NORTHERN ENGINEERING & SUP-
PLY CO., LTD., North St. Full line of En-
gineering and Marine Supplies.

INDIANA HARBOR, IND.

Marine Supplies—CALUMET MARINE SUPPLY,
3444 Michigan Ave. All Phones: 802.

INDIANAPOLIS, IND.

Pumps—DEAN BROTHERS PUMPS, INC. 323 W.
Tenth St.

LORAIN, O.

Provisions—McHENRY, CHAS. N., 339-341 E.
Erie Ave. City and Marine Meat Market and
Grocery. Phone: 8134, day and night.

Shipbuilders—AMERICAN SHIP BUILDING CO.,
THE. Lorain Plant: Colorado Ave. Telephone:
Lorain 8112. Hull, engine and boiler construc-
tion and repairs; dry-docking; launch service.

The Passivation Products Co.

1311 N.B.C. Bldg.
Cleveland, Ohio

RESINEX
PROTECTIVE COATINGS
PASSIVITE
BOILER TREATMENT
TARPO
CANVAS PRESERVATIVE

Agents in All Lake Ports

MAIn 5968

Cleveland Steam Gauge Co. Agents

Telephone, 158.

CRISP LAUNDRY & DRY CLEANING CO.

The best of service day and night,
ON LOCK WALLS.

Sault Ste. Marie, Michigan

HANSEN BUILDERS OF STEEL BOATS
HANSEN WELDING COMPANY

CERTIFIED WELDERS
ELECTRIC AND ACETYLENE WELDING

Builders of Tanks, Smokestacks and Boiler Re-
pairing. Floating Equipment.

Shop Phone ADams 4015
Night Phone FOREst 2422

Shop at
318 WASHINGTON ST.
TOLEDO, OHIO

MANITOWOC, WIS.

Shipbuilders — MANITOWOC SHIPBUILDING COMPANY. Designers and builders. Complete Dry Docking and repair facilities for repairing Hulls, Boilers and Machinery. Full line of Oils, Grease, Packing and other Engine Room Supplies.

Supplies (Captains' and Engineers')—STANGEL, J. J., HARDWARE CO., Eighth at Quay. Refrigeration Service. Telephone 1234.

MILWAUKEE, WIS.

Engineers' Supplies—SAEFKE & NIENOW, 830 North Fourth St. Pipes, Valves and Fittings; Packings and Marine Supplies of all kinds. Phone: MARquette 3488.

Refrigeration—VILTER MFG. CO., THE, 2217 S. First Street. Phone: SHERidan 0111. Refrigeration Engineers and Manufacturers. General Machinists. All types of Pipe Work.

Repairs—MERTES-MILLER, INC., 1561 S. Barclay St. Ship and Boiler Repairs, Blacksmithing and Electric Welding. Phone: MITchell 7570. Night Phones: WEst 0653-R and EDge-wood 0792-J.

MONTREAL, ONT., CANADA

Towage - Salvage — SINCENNES - McNAUGHTON LINE, LTD., 635 Common St. Towage and Salvage. Phone: MA. 8383, Night Phone: MA. 2553.

MUSKEGON, MICH.

Provisions—BERGLUND'S, PORT CITY JOBBERS, 893-95 Terrace St. Groceries, Meats, Produce. Phone: 23-576. Night Phone: 53-134.

NEW YORK, N. Y.

Pump Valve Service — DURABLE MANUFACTURING CO., 114 Liberty St., New York, N. Y. The Strongest, Lightest, Most Efficient Valve Made.

PITTSBURGH, PA.

Fuel—KOPPERS COAL CO., Koppers Bldg., Cosl.

Quaker Marine Products

Used the world over

P. P. P. ROD PACKING
EBONITE SHEET PACKING
EBONITE STOP VALVE PACKING
PUMP VALVES, GASKETS,
RUBBER MATS and HOSE

Dealers in every Lake Port

QUAKER RUBBER CORPORATION

MAIN OFFICE—PHILADELPHIA

BRANCH—2035 S. Michigan Ave., Chicago
Phone: VICTory 0616

Cleveland 7139

Cleveland 7139

MOLLENBERG-BETZ MACHINE CO., Inc.
GENERAL MACHINISTS & REFRIGERATING ENGINEERS
General Repairs of Engines, Pumps and Refrigerating Machinery. Cylinders and valves bored in position. Ammonia and Fittings carried in stock. Distributors for FRICK CO. Refrigerating Machines.
20-26 Henry St. Buffalo, N. Y.

THE RUD MACHINE COMPANY

1036 W. 11th St.

CLEVELAND, OHIO

All Hull repairs above water line.
Boiler and machine work.
Welding boat.

Telephone: CHerry 3883-3884

PORT HURON, MICH.

Fuel—PORT HURON COAL & DOCK CO., Bunker Coal, accurately weighed in Hoppers suspended on Fairbanks automatic scales. Fast fueling, 24 hours per day. Best West Virginia Coals. Located on St. Clair River beside International Tunnel.

Paint Canvas—ROBESON PRESERVO CO.

SANDUSKY, O.

Repairs—KLOTZ MACHINE CO., THE, 316-318 West Water St., Machinists-Iron-Brass-Aluminum. Founders, special attention given to marine repairs. Telephone: Main 36. Night Phone: Main 1683-J.

Supplies—RINKLEFF HARDWARE CO., THE, 121-25 W. Water St. Complete Line of Ship Hardware including Packing, Pipe, Valves. Phone: 18. Night Phone: 2274.

SARNIA, ONT., CANADA

Repairs — GOODISON, JOHN THRESHER CO., LTD. All kinds of repairing, night and day. Phone: 2700. Night: 3142.

SAULT STE. MARIE, MICH.

Laundry—CRISP LAUNDRY AND DRY CLEANING CO., 413-21 West Portage Ave. The best of service day or night.

SCHENECTADY, N. Y.

Propulsion and Electric Auxiliaries — GENERAL ELECTRIC COMPANY, 1 River Road. Geared-turbine, turbine-electric and diesel-electric propulsion; motors and controls. See Inside Front Cover for Great Lakes facilities.

SOUTH CHICAGO, ILL.

Repairs—CALUMET SHIP YARD & DRY DOCK Co., 94th Street and Calumet River. General Ship Repairs. Boiler Repairing and Electric Welding. General Machine Work and Electrical Repairing.

17th Successful Year

S. JURECKY**CALUMET MARINE SUPPLY**

3444 Michigan Ave. All Phones 802

DAY OR NIGHT

INDIANA HARBOR, IND.*We Supply Vessels at Buffington*

Agents for Vacuum and National Oils

McKINNON IRON WORKS Co.*Established 1880*

Electric Welding Boiler Work Machine Work
Castings Deck Engines
Remote control for Deck Engines
All Parts for Chase Deck Engines
Gauge Glass Fixtures

ASHTABULA**OHIO****TWIN PORTS**

When in Twin Ports give us a call for your laundry. Four hours service if necessary when coming up light. Launch and Truck service. Day or night. Give our plant a visit.

*The Old Reliable***HAWKINS MARINE LAUNDRY**

Superior, Wis.

Phone: Broad 300

Nights: Broad 2273

SUPERIOR, WIS.

Laundry (Marine)—HAWKINS MARINE LAUNDRY, Duluth—Superior Harbor, Phones: Day, Broad 300; Nights, Broad 2273.

Shipbuilders—AMERICAN SHIP BUILDING CO., THE, Superior Plant: Clough Ave. and Third St. Telephones; from Superior, call 169; from Duluth, call Melrose 82. Hull, engine and boiler repairs; dry-docking; launch service.

TOLEDO, O.

Laundry (Marine)—PHEASANT MARINE LAUNDRY, 1145 Miami St. 6 hour Service. Night or Day. Phones: Day, Taylor 1329; Nights, Jefferson 5024 W, or Jefferson 4446 J, or Lawndale 9451.

Meats—BEEGLE, H. F., MEAT CO., 36-38 Superior St. Groceries and Vegetables. Phone: Main 4181.

Provisions—VALLEY CAMP STORES CO., 728-730-732 Water St. Groceries, Meats, Produce, Marine Supplies. Day and Night Launch Service. Phone ADams 2911. Res. Phone, Pontiac 1322

Shipbuilders—AMERICAN SHIP BUILDING CO., THE, Toledo Plant: 902-910 Water St. Telephone ADams 6115. Hull, engine and boiler repairs; launch service.

Shipbuilders—TOLEDO SHIPBUILDING CO., INC. Main Offices and Plant 2245-2537 Front St. Complete dry docking and repair facilities, hulls, engines, boilers and auxiliaries. Telephone: Pontiac 1501-1502-1503-1504.

PHONE, ADAMS 2911 RES. PHONE, PONTIAC 1322

**THE VALLEY CAMP STORES CO.
GROCERIES, MEATS, PRODUCE
MARINE SUPPLIES**

**DAY & NIGHT LAUNCH SERVICE
728-730-732 WATER STREET**

EARL A. KIMMINS, MGR. TOLEDO, OHIO

PACKINGS OF MERIT

ALLPAX
U. S. METAL

BELMONT
"V" PILOT

JNO. J. DISCH CO.

Main Office and Factory

6109 Franklin Blvd. Cleveland

Phone Woodbine 6717

Day or Night

LEOPOLD BROTHERS

Furniture Company

**Furniture—Carpets
Linoleums—Mattresses
Radios—Springs**

Prompt Delivery Service

**Lorain at West 30 St. Cleveland, Ohio
Telephone: MEIrose 2324**

PENETROL

REG. U. S. PAT. OFF.

THE FLOOD COMPANY

6217 Carnegie Ave.

CLEVELAND, OHIO

TOLEDO, O. (continued)

Supplies (Captains' and Engineers')—**HARDY & DISCHINGER CO.**, THE, 121-123 N. St. Clair St. Delivery Boat I-No-U. Phone MAin 1124, WAalbridge 0696, WAalbridge 1309, FOrest 3719, LAwndale 6972. Delivery Agents for Oil Companies.

Welding and Boat Building—**HANSEN, HANS. WELDING CO.**, 318 Washington St. Certified Welders, Electric and Acetylene. Tank Builders. Smokestack and Boiler Repairs. Floating Equipment. Phone: ADams 4015. Night Phone: FOrest 2422.

TROIS RIVIERES, P. Q., CANADA

Machine Shop—**DEEROBERTS AIME**, 309 St. George Street. General Ship Repairs. Light and heavy work. Phone: 1081; Night: 1876.

Manitowoc Shipbuilding Company

Manitowoc

Wisconsin

Telephone 1040

Designers and builders of all types of Steam, Diesel and Diesel Electric propelled equipment, as follows:

Oil Tankers	Dipper Dredges
Freight Vessels	Sandsuckers
Passenger Vessels	Dump Scows
Self-Unloaders	Barges
Car-Ferries	Tugs
Suction Dredges	Car Floats
Pleasure Yachts	Pontoons
Fire Boats	Boilers
Marine Engines	Marine Aux. equipment

Complete docking and repair facilities

Northern Engineering & Supply Company Limited

We have experienced men and Necessary Plant equipment to do all kinds of High Class Marine Work, Welding and Cutting, Foundry Work, Sheet Metal Work, Pipe, Valves and Fittings. Full Line of Engineering and Marine Supplies.

GIVE US A TRIAL

Phones: { 650 S
3826 S Night Phone: S. 1833
NORTH ST. FORT WILLIAM, ONT., CAN.

H. D. EDWARDS & CO.

EST. 1855

VESSEL AND ENGINEER'S SUPPLIES

Plymouth Cordage—Roebing Wire Rope—Walker, Bliss & Negus Logs in Stock

175 E. Larned St., Detroit, Randolph 7311

CARL H. MEISER

Marine Meats and Groceries
Steamboat, Hotel, Restaurant and Cafeteria
Supplies

DAY and NIGHT LAUNCH DELIVERY
818 PEACH STREET { 23-637
ERIE, PA. Phone { 23-638
Residence Night Calls 65-110

Index to Advertisers

American Oil & Paint Co., The.....	155
American Shipbuilding Co.....	170
Inside Back Cover, 154, 156, 164,	170
Anchor Packing Co., The.....	139, 154, 156,
Apple Conservation Assoc.....	151
Banner, Thomas B., Boiler & Welding Co.....	145
Beagle, H. F., Meat Co.....	161
Berglunds.....	163
Boom Boiler & Welding Co.....	155
Brown, Ely & Richards.....	152
Calumet Marine Supply Co.....	169
Calumet Shipyard & Dry Dock Co.....	168
Central National Bank of Cleveland.....	176
Chalem, Ben, Inc.....	156
Cleveland Steam Gauge Co.....	157
Connelly, William M.....	154
Crane Packing Co.....	18, 160,
Crisp Laundry & Dry Cleaning Co.....	165
Daniels, C. R., Inc.....	162
Dean Bros. Pumps, Inc.....	134
Dearborn Chemical Co.....	4
Des Roberts, Alme.....	172
Disch, John J., Co.....	171
Durabla Mfg. Co.....	157
Edwards, H. D. & Co.....	173
Electric Laundry Co., The.....	152
Elgin Softener Corp.....	34
Ferbert-Schorndorfer Co.....	163
Flood Co., The.....	171
Ford Brothers.....	154
France Packing Co.....	28
Fuel Oil Corp.....	159
Gasser, M. M., Co.....	159
Geary Boiler Works.....	163
Gedeon Machine & Tool Co.....	158
Gehm, John.....	154
General Electric Co.....	Inside Front Cover
Goodison, John, Thresher Co., Ltd.....	168
Gunn, P. J.....	154
Hans Hansen Welding Co.....	165
Hardy & Dischinger Co.....	172
Hausheer & Sons Co.....	160
Hawkins Marine Laundry.....	169
International Fumigators Reg.....	151
Keckley, O. C., Co.....	14
Klotz Machine Co.....	168
Koppers Coal Co.....	8

Leopold Brothers Furniture Co.....	171
McHenry, Chas. N.....	164
McKinnon Iron Works Co., The.....	169
Manitowoc Shipbuilding Co.....	172
Meiser, Carl H.....	173
Mertes-Miller, Inc.....	161
Mollenberg-Betz Machine Co.....	167
Mulholland Hatch Fastener Co.....	158
Murphy, James, Coal Co.....	161
National Aluminate Corp.....	141
National Malleable & Steel Castings Co.....	2
Nicholson & Hall Boiler & Welding Corp.....	152
Nicholson Terminal & Dock Co.....	143
Northern Engineering & Supply Co.....	173
Oldman Boiler Works, Inc.....	10
Passivation Products Co., The.....	165
Pattison, W. M., Supply Co., The.....	12
Pheasant Marine Laundry.....	170
Pittsburgh Coal Co.....	20
Port Huron Coal & Dock Co.....	36
Quaker Rubber Corp.....	167
Reading, E. H.....	159
Reliance Gauge Column Co.....	16
Rennick, Thomas J.....	152
Ridge Tool Co.....	22
Rinkleff Hardware Co.....	153
Robeson Preservo Co.....	32
Root & McBride Co.....	6
Rud Machine Co.....	167
Russell & Watson, Inc.....	44
Saefke & Nienow Co.....	147
Sherwin-Williams Co., The.....	24
Sincennes-McNaughton Tugs, Ltd.....	30
Smith Brothers.....	156
Smith, Sidney E.....	157
Society for Savings.....	1
Standard Oil Co., of Ohio.....	25, 26
Stangel, J. J., Hardware Co.....	166
Stanley & Didley.....	154
Tashenberg Brothers.....	152
Thomson, J. & A.....	162
Toledo Shipbuilding Co., Inc.....	137
Upson-Walton Co., The.....	154, 156, Back Cover
Valley Camp Stores, The.....	170
Vilter Mfg. Co., The.....	155
Westinghouse Electric & Mfg. Co.....	160, 162



**MONEY
WHEN
YOU
NEED
IT**

Your Captain and a *Central National Marine Savings Plan* will help you save money every pay day for those emergencies. Ask him about our Marine Savings Plan.

**Central National
Bank**
of Cleveland

Member Federal Deposit Insurance Corporation

**THE
AMERICAN SHIP BUILDING
COMPANY**

GENERAL OFFICES

and

CLEVELAND PLANT

Foot of West 54th St., N. W.
Cleveland, Ohio

Telephone: **Woodbine 2280**

Night Telephones:

Gate	Woodbine	2277
Machine Shop	Woodbine	2776
Office	Woodbine	3089

BUFFALO PLANTS

191-301 Ganson St., Buffalo, N. Y.
Telephones: Cleveland 4055 and 4056

Ft. of So. Michigan Ave., Buffalo, N. Y.
Telephone: Washington 0602

CHICAGO PLANT

101st St. and Calumet River, Chicago, Ill.
Telephones: Regent 2000 and 2001

LORAIN PLANT

Colorado Avenue, Lorain, Ohio
Telephone: Lorain 8112

SUPERIOR PLANT

Clough Ave. and Third St., Superior, Wis.
Telephones: From Superior, call 169; from Duluth, call Melrose 82

TOLEDO PLANT

902-910 Water St., Toledo, Ohio
Telephone: Adams 6115



Ship Chandlery

Vessel Outfits

Wire and Manila Rope—Nautical Instruments

The Upson-Walton Co.

CLEVELAND—Telephone: MAIn 7444

BUFFALO

CHICAGO

NEW YORK

Tel.: Cleveland 4027 Tel.: Haymarket 6380 Tel.: Whitehall 4-4960

PITTSBURGH—Telephone: Atlantic 2696