

*The Great Lakes*  
**RED BOOK**  
**1941**

A list of over 1500 Vessels of the Great Lakes, including the names of their Owners, Captains and Engineers, and of Ship-building and Repair Yards.

*Compliments of*

**Society for Savings**  
in the City of Cleveland

PUBLIC SQUARE

**IN THESE GREAT LAKES PORTS**  
**We Offer You Complete G-E Service**

- **BUFFALO**  
Sales Office: 1 West Genesee St., Phone Cleveland 2800 • Service Shop: 318 Urban St., Phone Humboldt 5849
- **CHICAGO**  
Sales Office: 840 S. Canal St., Phone WABash 5611 • Service Shop: 849 S. Clinton St., Phone WABash 5611
- **CLEVELAND**  
Sales Office: 4966 Woodland Ave., Phone ENdicott 4464 • Service Shop: 4966 Woodland Ave., Phone ENdicott 4464
- **DETROIT**  
Sales Office: 700 Antoinette St., Phone TRinity 22600 • Service Shop: 5950 Third Ave., Phone TRinity 22600
- **MILWAUKEE**  
Sales Office: 940 West St. Paul Ave., Phone MARquette 5000 • Service Shop: 940 West St. Paul Ave., Phone MARquette 5000

*Warehouse stocks maintained in all the above Great Lakes Ports.*

- **TOLEDO**  
Sales Office: 420 Madison Ave., Phone MAIn 6291

**BUILDERS OF MARINE EQUIPMENT SINCE 1892**

**GENERAL ELECTRIC**  
Fluog No. 5800 96-458

**SCHENECTADY, N. Y.**



**SOCIETY FOR SAVINGS BANK**

**Build a Seaworthy Bank Account**

at this old Society where generations of Great Lakes men have saved by mail.

To get your bank book just send the first deposit with your name and that of your ship.



*Resources over \$100,000,000*

*Incorporated 1899*  
**Society for Savings**  
*In the City of Cleveland*

# NACO

## ANCHOR CHAIN

And

## JOINING LINKS

Assure Extreme  
Strength And  
Durability



### NATIONAL MALLEABLE AND STEEL CASTINGS COMPANY

General Offices  
Cleveland, Ohio

## VESSELS OF THE GREAT LAKES

with the name of  
OWNER, CAPTAIN AND  
ENGINEER

+

Complete Port Directory  
Complete Shipyard Directory  
Dimensions and Capacity of  
Bulk Freighters

+

1941  
SEASON

+

*Published by*  
THE PENTON PUBLISHING CO.  
Cleveland

# Prevent Maintenance Troubles

---

## 1. DEARBORN WATER TREATMENT

You can keep your boilers free from scale and corrosion, and prevent carryover with Dearborn Feedwater Treatment and Engineering Service. Dearborn engineers will make a careful study of your individual water conditions, furnish a treatment balanced to fit your needs, advise you on blowdown and other control tests, and make frequent check-ups to insure satisfactory boiler operation.

## 2. NO-OX-ID RUST PREVENTIVE

Your steelwork can be protected permanently with NO-OX-ID. When applied over rusted surfaces, NO-OX-ID penetrates to the base metal and immediately stops all corrosion. NO-OX-ID forms an oily film that is not affected by water. Write for information.

**DEARBORN CHEMICAL COMPANY**  
MARINE DEPARTMENT  
310 S. Michigan Ave., Chicago, Ill.

## HOW TO USE THE DIRECTORY

+

■ Beginning on page 45 are listed more than 1500 vessels available for service on the Great Lakes for the season of 1941. In addition to management, chief operating personnel is given where possible. In the case of bulk freighters technical data, such as keel length, beam, depth, distance between hatches, and carrying capacity at 20-ft. draft are given.

■ To find the name of the owner, captain or engineer, refer to the name of the vessel in the alphabetical index. Each listing in this index carries a number which refers to the fleet to which the vessel belongs and is found preceding the owner's name in the fleet listing.

■ On page 127 a directory of shipbuilding and ship repair yards is given, listed alphabetically, with the names of officials and pertinent data.

■ On page 144 a Where-To-Buy directory will be found, conveniently listed under each port.

+

Copyright, 1941, The Penton Publishing Co.  
Cleveland, Ohio



## YOU TRY IT

### THIS LUBRICANT IS WATERPROOF

It won't wash off the exposed gears, wire rope or sheaves. Absolutely prevents rust and corrosion. Just as efficient for below as above decks.

The LUBRIPLATE Folder tells how to save money on lubricants and make equipment last longer.



#### LUBRIPLATE DIVISION

FISKE BROTHERS REFINING COMPANY  
Newark, N. J. Toledo, Ohio

DEALERS FROM COAST TO COAST

**LUBRIPLATE**  
THE MODERN LUBRICANT  
THAT ARRESTS PROGRESSIVE WEAR

## INDEX TO LAKE FLEET

A		Vessel	Fleet No.
Vessel	Fleet No.	Alpena	237
AB-3	225	Amaranth	225
ACD	60	Amazon	106
Abitibi	2	America	10
Acadialite	108	America	93
Acadian	29	American	6
Ace	154	American	138
Achilles	16	Amership	6
Aclipson	121	Amherst	145
Adams, Cuyler	214	(nee Peter Koenig)	
Adele	75	Anarco	189
Adriatic	178	Angeline	45
Aetna	152	Ann Arbor No. 3.	7
Affleck, B. F.	183	Ann Arbor No. 5.	7
Agnes P.	31	Ann Arbor No. 6.	7
Agoming	111	Ann Arbor No. 7.	7
Alabama	38	Ann L	126
Alabama	93	(nee Walter Wyman)	
Albatross	208	Aragon	212
Alberta	34	Arcturus	178
Alfred J.	126	Argentueil	31
Algocen	3	Arizona	93
Algolah II	117	Arkansas	93
Algonquin	104	Arnold, Fanny	26
Algonquins	55	Ashcroft	29
Algorail	3	Ashley, J. S.	106
Algoosoo	3	Ashtabula	93
Algoosoo	3	Ashtabula	175
Algoosoo	3	Aspen	225
Algoway	3	Assiniboia	34
(nee John J. Boland, Jr.)		Athabasca	34
Alice	184	Atlas	5
Alice Vivian	238	Atterbury, W. W.	95
Allan, Sir Hugh	156	Aubrey	5
Allan, No. 2	26	Augustus, A. A.	106
Allen, Justine C.	125	Aurelia	37
Allen, Martha E.	125	Aviso	190
Alpena	93	Aylmer	216
		<b>B</b>	
		B-7	90
		Back Bay	84

THERE'S A KOPPERS  
QUALITY COAL  
FOR EVERY PURPOSE!

**KOPPERS QUALITY COALS**

applications ↓

	DOMESTIC HAND FUEL	DOMESTIC STEAM	DOMESTIC STEAM	STEAM PLANTS	GAS PLANTS	COMMERCIAL COKE PLANTS	FORGE AND FOUNDRY	METALLURGICAL COKE PLANTS	WALKER	RAILROADS
DOMESTIC HAND FUEL	✓	✓	✓	✓	✓	✓	✓	✓	✓	✓
DOMESTIC STEAM	✓	✓	✓	✓	✓	✓	✓	✓	✓	✓
DOMESTIC STEAM	✓	✓	✓	✓	✓	✓	✓	✓	✓	✓
STEAM PLANTS	✓	✓	✓	✓	✓	✓	✓	✓	✓	✓
GAS PLANTS	✓	✓	✓	✓	✓	✓	✓	✓	✓	✓
COMMERCIAL COKE PLANTS	✓	✓	✓	✓	✓	✓	✓	✓	✓	✓
FORGE AND FOUNDRY	✓	✓	✓	✓	✓	✓	✓	✓	✓	✓
METALLURGICAL COKE PLANTS	✓	✓	✓	✓	✓	✓	✓	✓	✓	✓
WALKER	✓	✓	✓	✓	✓	✓	✓	✓	✓	✓
RAILROADS	✓	✓	✓	✓	✓	✓	✓	✓	✓	✓

**KOPPERS QUALITY COAL**

# KOPPERS COAL

Pittsburgh · Chicago · Cincinnati · Cleveland

Detroit · New York · Norfolk · Philadelphia

THE KOPPERS COAL COMPANY

Vessel	Fleet No.	Vessel	Fleet No.
Badger State .....	79	Blue Cross .....	227
Baird, Frank B. ....	227	Blue River .....	227
Baker, George F. ..	183	Boardman, John W. 105	
Ball Bros. ....	214	Boeckling, G. A. ..	12
Barbara Jo .....	192	Boland, John J. ....	16
Barge No. 3 .....	205	(nee Algoway)	
Barge 137 .....	227	Boss, C. J. ....	134
Barkhamstead .....	186	Bowden, W. A. ....	31
Barlow .....	82	Bowman, A. F. ....	226
Barnes, Andrew M. 77		Bradley, Carl D. ....	18
Barnes, Julius H. ...	77	Brazil .....	107
Barnes, Richard J. 77		Bricoldoc .....	174
Baroff .....	136	Brighton .....	204
Barrallton .....	82	Britamette .....	19
Barrie .....	29	Britamlube .....	19
Bartelme, M. J. ....	170	Britamoco .....	19
Batchawana .....	31	Britamoil .....	19
Baxter, Jas. Jr. ....	144	Britamolene .....	19
Bayfield .....	54	Britt, Thomas .....	170
Bayton .....	200	Brittania .....	15
Beauharnois .....	122	Britten, Fred A. ....	57
Beauvais, Ernest E. 87		Brock, General .....	136
Beaverton .....	29	Brockton .....	84
Becker, B. H. ....	13	Brown Beaver .....	227
Becker, G. F. ....	13	Brown, Fayette ....	178
Becker, John A. ....	141	Brown, Harvey H. 178	
Bennington .....	84	Brown, J. J. H. ....	20
Berryton .....	200	Bruxelles .....	136
Berthier .....	31	Bryn Mawr .....	227
Berwind, Edward J. 100		Buckeye State .....	79
Bess, Earl .....	136	Budd, Ralph .....	227
Bethlehem .....	14	Buffington, E. J. ....	183
Bide-a-Wee .....	282	Bug, G. L. ....	4
Bienville .....	129	Bulkarier .....	28
Bigwin .....	104	Bunsen, R. W. E. ...	183
Billings, Frank ....	106	Burgess, Rose .....	179
Birchton .....	96	Burke, Joseph P. ...	200
Black, Clarence A. 183		Burton .....	220
Black Rock .....	220	Busse, Fred A. ....	39
Blanche H. ....	126	Butler, Bessie ....	31
Block, Joseph .....	106	Butler, Hazen .....	151
Block, L. E. ....	106	Buttercup .....	82
Block, Philip D. ..	106	Buttercup .....	216
Blockbelle .....	216	Butterfield .....	51
		Byers, A. M. ....	194

# OLDMAN BOILER WORKS, Inc.

Marine and Stationary  
Boilers

*Manufacturers of*  
**PORT COLBORNE  
FAIRLEADS**

*Complete Portable and floating Equip-  
ment for any repair work above the  
water line.*

*Steel fabricators*

**OFFICE & WORKS**  
32-42 Illinois Street  
**BUFFALO, NEW YORK**

*Twenty-four hour service*

Office: Call CLeveland 0932

*Resident Phones:*

Grant 9100      Triangle 0877  
Triangle 3327

Vessel	Fleet No.	Vessel	Fleet No.
	<b>C</b>	Charles L. ....	121
CG-119 .....	225	Cherry .....	225
CG-153 .....	225	Chester .....	32
CG-173 .....	225	Cheyenne .....	55
CG-192 .....	225	Chicago Ship No. 1	6
CG-219 .....	225	Chicago Ship No. 3	6
C. & R. Derrick		Chicago Tribune..	191
No. 1 .....	136	Chief Wawatan ...	135
C.S.B.2 .....	6	Churchill .....	136
Cadillac .....	15	Churchill .....	220
Cadillac .....	45	Cite des Trois Riv-	
Cadwell, C. W. ...	212	ieres .....	218
Cahill, Toby .....	137	City of Cheboygan	150
Cahotte .....	136	City of Cleveland	
Calcite .....	18	III .....	62
Calgarian .....	29	City of Detroit III	62
California .....	93	City of Dover .....	85
Calumet .....	178	City of Erie .....	43
Calverley, W. D. Jr.	106	City of Flint 32....	176
Cambria .....	14	City of Grand	
Campbell, J. A. ...	178	Haven .....	88
Campbell, Peter G.	67	City of Grand	
Camphausen, F. H.	80	Rapids .....	40
Canadian .....	29	City of Grand	
Canadiana .....	56	Rapids .....	88
Canadoc .....	174	City of Hamilton..	29
Canatco .....	27	City of Hancock... 64	
Canfield, Capt. A..	222	City of Kingston..	29
Canopus .....	178	City of Midland 41	176
Caribou .....	68	City of Milwaukee	83
Carillon .....	31	City of Montreal... 29	
Cartierdoc .....	174	City of Munising... 150	
Carroll, Weston M.	25	City of Saginaw	
Carrollton .....	170	No. 31 .....	176
Casco .....	127	City of St. Joseph	197
Casey, Thos. Lin-		City of Toronto.... 29	
coln .....	221	City of Windsor... 29	
Cassidy, James H..	90	Clark, Simon .....	52
Cayuga .....	29	Clark, T. J. ....	216
Cedarbranch .....	136	Clarke, E. A. S. ...	178
Cedarton .....	96	Clement, N. P. ...	227
Cementkarrier .....	28	Clemson, D. M. ...	183
Central .....	149	Cleseco .....	46
Cetus .....	178	Cleveland Ship ...	6
Chambers, Edward	154	Clevelander .....	158
Chambly .....	31		

# THE W. M. PATTISON SUPPLY CO.

*Immediate Delivery from Stock:*

## EVERLASTING VALVE COMPANY

Blow-Off and Water Column Valves

## JONES & LAUGHLIN STEEL CORPORATION

Galvanized Steel Mooring Lines  
and Wire Rope.

## LUNKENHEIMER COMPANY

Bronze Iron and Steel Valves  
for Marine Service.

## STANLEY ELECTRIC TOOL COMPANY

Marine Scaling Hammers, Drills and Grinders.

## WALL ROPE WORKS INCORPORATED

Harbor Tow Lines, Boat Falls,  
Signal Halyards and Rat Lines.

*Telephone: Main 7320*

777 Rockwell Ave., Cleveland, Ohio

Vessel	Fleet No.	Vessel	Fleet No.
Close, Robert J. ...	6	Covalt .....	157
Clyde .....	147	Cowan, W. P. ....	209
Clyde, W. G. ....	183	Cowle, John B. ....	92
Coalfax .....	48	Craftsman .....	6
Coalhaven .....	29	Crapo, S. T. ....	105
Cobourg .....	204	Crawford .....	242
Colbert .....	129	Crawford, G. G. ...	183
Cole, Thomas F. ...	183	Crawford, W. D. ...	100
Collier .....	29	Crescent .....	25
Collingwood .....	29	Crescent City .....	165
Collins, E. C. ....	183	Crest .....	90
Colonel .....	45	Crete .....	178
Colorado .....	93	Crocus .....	225
Colton, A. W. ....	75	Croft, Harry W. ...	178
Columbia .....	15	Crowley, P. E. ....	95
Columbia .....	75	Crudoil .....	46
Comet .....	46	Crusader .....	186
Commerce .....	103	Cumberland .....	223
Coniscliffe Hall ...	98	Cushing, John F. ...	90
Conneaut .....	237	Cyclo-Brave .....	142
Connecticut .....	93	Cyclo-Chief .....	142
Connell, Charles J.	80	Cyclo-Warrior .....	142
Connell, Frances M.	80	Cygnus .....	178
CConnell, Jr., P. G.	80		
Connolly, W. M. ...	45		
Connolly Bros.			
No. 1 .....	49		
Conners, W. J. ....	95		
Constans .....	52		
Constitution .....	186		
Consumer's Power..	16		
Conway, Carle C. ...	100		
Coolidge, S. B. ....	106		
Coralia .....	165		
Corey, William E. ...	183		
Cornelius, Adam E.	16		
Cornelius, Adam E.			
Jr. ....	16		
Cornell .....	183		
Cornett, J. A. ....	30		
Corvus .....	178		
Coteau .....	226		
Coteaudoc .....	174		
Coulby, Harry .....	178		
Courtney .....	217		
		Dahlia .....	225
		Dahlke, H. ....	164
		Dalhousie City .....	163
		Dalton, Henry G. ...	178
		Dalwarnic .....	27
		Damia .....	109
		Daniels, Wm. H. ...	227
		Daryaw, Henry C. ...	58
		Davidson, James ...	214
		Davidson, Jas. E. ...	214
		Davie, George T. ...	189
		Davis, J. M. ....	95
		Davock, W. B. ....	178
		De Grasse .....	199
		De Laverendrye ...	218
		Delaware .....	93
		Delkote .....	69
		Delver .....	184
		Dempsey, E. C. ....	90
		Denmark .....	92

**D**







# EYE-HYE

protects you and  
your vessel from  
*danger and*  
*expense of water*  
level accidents.

Bring your water gages *down*  
for frequent easy reading  
with Reliance EYE-HYE  
Remote Reading Gage. It  
gives you a clear sharp read-  
ing in illuminated green  
liquid. Easy to install. Dependable, trouble-  
proof.

Hundreds in use on land and sea; approved  
by the Federal Bureau of Inspection and  
Navigation. Make your vessels safer, your  
power control more efficient. Write today for  
Bulletin 382.

**The Reliance Gauge Column Co.**

5902 Carnegie Ave., Cleveland, O.

# Reliance

**Boiler Safety Devices Since 1884**



Vessel	Fleet No.	Vessel	Fleet No.
Greater Buffalo.....	62	Holley, Alexander..	227
Greater Detroit.....	62	Holloway, John A.	227
Green, Andrew H.	90	Holloway, W. W.....	170
Green, Fred W. ....	169	Hollyhock .....	225
Green Bay .....	193	Holst, R. W. ....	229
Green Island .....	82	Hoopes, Wm. ....	199
Greiling, Fred C....	134	Hosford, Harry	
Grenville .....	31	Wm. ....	23
Grey Beaver .....	227	Houghton, Douglas	183

## H

H. C. M. No. 8.....	136	Hubbard, Charles...	92
Hagerty .....	29	Hudson .....	90
Halcyon .....	231	Hudson, A. A. ....	168
Halifax No. 25 ...	184	Hudson, Bruce .....	131
Hall, Bob .....	31	Hullman .....	136
Hallam Bros. ....	4	Hulst, John .....	183
Hamildoc .....	174	Humphrey, Geo. M.	211
Harmonic .....	29	Humrick .....	82
Handy Boy .....	145	Huntley, Charles R.	227
Hanlan, Ned .....	215	Huron .....	32
Hanna, Jr., H. M. ...	170	Huron .....	237
Hanna, Leonard C. ...	14	Huronic .....	29
Hartwell, Fred G. ...	100	Hustler .....	6
Harvard .....	183	Hutchinson, C. L. ...	106
Harvester, The .....	110	Hyacinth .....	225
Harvey .....	213	Hydro .....	118
Harvey, A. F. ....	183	Hyman .....	25
Harvey, F. E. ....	164		
Hastings .....	29		
Hatfield, J. A. ....	183		
Hausler, Martin Jr.	90		
Hebard, C. S. ....	234		
Hector .....	30		
Heekin, Albert E. ...	100		
Hemlock .....	178		
Hennepin .....	45		
Hercules .....	172		
Heron Bay .....	191		
Hilda .....	189		
Hill, James J. ....	183		
Hill, L. W. ....	100		
Hindman, George....	66		
Hobson, Robert ...	178		

## I

Iango .....	226
Idaho .....	93
Illinois .....	90
Illinois .....	93
Illinois .....	235
Imperoyal .....	108
India .....	22
Indiana .....	90
Indiana .....	93
Industry .....	103
Ingalls, George H. ...	62
Inglis, Wm. ....	216



# JOHN CRANE PACKINGS *for*

## MARINE SERVICE

*A Complete Line of*

## Metallic & Fabric Packings

Condenser Packing  
Metallic Packings  
Semi-Metallic Packings  
Shredded Metallic Packing  
Plastic Packings

Jacketed Plastic  
Packings  
H. P. Spirals  
Braided Asbestos  
Braided Flax  
Hydraulic Tucks

Asbestos Sheet  
Red Rubber Sheet

Water-Proof Sheet  
Oil-Proof Sheet

### CRANE PACKING CO.

1800 Cuyler Ave.

Chicago, Ill.

*Marine Representative*

## FRED M. HARMON

380 Rockefeller Bldg. Cleveland, Ohio  
Phone: PRospect 5543

Vessel	Fleet No.	Vessel	Fleet No.
International, The..	110		
International .....	112		
Locolite .....	108		
Iocoma .....	108		
Iowa .....	93		
Ireland, R. L. ....	234		
Ironwood .....	164		
Iroquois .....	104		
Irvin, W. A. ....	183		
Iselin, Adrian ....	164		
Ishpeming .....	45		
Islay .....	137		
Itororo .....	217		

### J

Jack .....	154		
Jackway, Wm. H....	121		
Jaffray, C. T. ....	95		
James, Jesse .....	186		
(nee John E. Meyer)			
Janin, Claire .....	115		
Jason .....	16		
Jean T. ....	205		
Jeanne T. ....	205		
Jenkins, Chas. O... 151			
Jerry W. ....	192		
Joffre S. ....	205		
John, J. B. ....	177		
Johnson, E. E. ....	126		
(nee John P. Geist-			
man)			
Johnson, Horace ...	183		
Johnston, Robert E. 53			
Joliet .....	45		
Jolliet, Louis .....	129		
Jones, B. F. ....	113		
Jones, Harry R. ....	178		
Josephine .....	57		
Judge Hart .....	227		
Judge Kenefick ...	227		
Juniata .....	95		
Junior .....	90		
Jupiter .....	116		

### K

Kam .....	2		
Kansas .....	93		
Katchewana .....	31		
Kearsarge .....	27		
Keewatin .....	34		
Kellers, Frederick			
T. ....	149		
Kelley Island .....	118		
Kelley, Norman ....	233		
Kendall, John .....	61		
Kendrick, Edw. S. 234			
Kennedy, John .....	136		
Kenora .....	29		
Kenosha .....	223		
Kent .....	222		
Kentucky .....	93		
Kerr, D. G. ....	183		
Keybar .....	119		
Keybell .....	119		
Keydon .....	119		
Keyholt .....	119		
Keymont .....	119		
Keyport .....	119		
Keystate .....	119		
Keyvive .....	119		
Keywest .....	119		
Kinch, William H. 90			
King .....	154		
King, Willis L. ....	113		
Kingdoc .....	174		
Kingston .....	29		
Kinmount .....	29		
Kinney, A. T. ....	234		
Kishman, H. B. ....	120		
Kling, John A. ....	196		
Koalkraft .....	206		
Koenig, Peter .....			
(see Amherst)			
Kopmeier, Norman			
J. ....	16		
Krupp, Alfred .....	155		
Kulas, E. J. ....	234		

# CHAMPION VESSEL FUEL

*It's the best Steamboat Coal*

**24-Hour Service  
at all Lake Erie Ports  
and**

**St. Mary's River Docks  
Lime Island, Mich.  
Sault Ste Marie, Mich.**

**Detroit River Dock  
Windsor, Ont.**

**Fuel Lighter at Cleveland, O.**

*The Fastest and Most Conven-  
ient Plants on the Great Lakes*

**Pittsburgh Coal Company**

**Terminal Tower  
CLEVELAND, OHIO**

Vessel	Fleet No.	Vessel	Fleet No.
<b>I.</b>			
La Belle .....	100	Leslie, Alexander..	123
La Salle .....	15	Lester, K. ....	120
Lachine Canal .....	31	Lethbridge .....	29
Lachinedoc .....	174	Levis .....	185
Lackawanna .....	14	Lillis, John T. ....	80
Lagonda .....	178	Lindabury, R. V. ....	183
Lake Allen .....	82	Livingston .....	200
Lake Chelan .....	16	Lockwell .....	200
Lake Crystal .....	82	Lockwood .....	220
Lake Farge .....	82	Londonderry .....	204
Lake Folerft .....	82	Loe Loo .....	37
Lake Freeland .....	82	Loomis, Ed. E. ....	95
Lake Frugality .....	82	Lorain .....	93
Lake Frumet .....	82	Lorain .....	132
Lake Hemlock .....	82	Lorain Ship .....	6
Lake Inaha .....	82	Lorene .....	233
Lake Louise .....	82	Loretta .....	31
Lake Pleasant .....	82	Louisiana .....	93
Lake Sapor .....	82	Louisville .....	160
Lakeside III .....	21	Luedtke, Karl E. ....	133
Laketon .....	200	Lydou, William A. ..	90
Lakewood .....	25	Lynch, Thomas .....	183
Lamont, T. W. ....	183	<b>M</b>	
Lansdowne .....	32	M-9 .....	90
La Plante .....	139	M.F.D. No. 15 .....	153
Larson, Swan .....	137	M.F.D. No. 29 .....	153
La Salle .....	15	McAlpine, James E. ..	20
La Salle .....	45	McBride, Sam. ....	216
Latin American .....	213	McCool, Daniel .....	36
Laughlin, James .....	113	McCormick, John A. ..	90
Lavaldoc .....	174	McCullough, C. H. ..	
Lavaltrie .....	31	Jr. ....	178
Lavoilette .....	31	McDonough .....	220
Lawrencoc .....	174	McDougald, John A. ..	67
Lebanon .....	14	McDougall, Alex. ....	23
Lehigh .....	14	McFarland .....	170
Lehtinen .....	126	McGean, W. H. ....	106
(nee Sumac)		McGinnis, Harry .....	90
Lemoyne .....	29	McGonagle, W. A. ....	183
Lennox .....	29	McGuire Dr. Wal- ter G. ....	90
Leona .....	197	McKee, Geo. M. ....	136
Leonard, George B. ..	92	McKellar, J. O. ....	200
Leopold, N. F. ....	106		

Vessel	Fleet No.	Vessel	Fleet No.
McKerchey, J. M....	118	Markham, Gen.....	46
McKinney, Price....	106	Markham, Gen.	
McLauchlan, Wm....	178	E. M. ....	90
McLean, John .....	183	Marquette .....	45
McNaughton, Jas. 234		Marquis Roen .....	146
McQueen, Patricia..	145	Marsala .....	23
Macaulay, A. M....	30	Martha B. ....	121
Mackay, Robert ...	156	Martha C. ....	90
Mackinac Islander	8	Marvet H. ....	121
Macoubry, J. H....	151	Mathilda .....	204
MacPherson, N. B. 227		Mary C. ....	90
Madison .....	88	Maryland .....	14
Magna .....	23	Maryland .....	93
Magpie .....	2	Mascot .....	161
Maia .....	23	Massachusetts .....	93
Maida .....	186	Massey, F. V. ....	81
Maine .....	93	Massey, J. F. Jr.,	210
Maine .....	213	Mataafa .....	183
Maitland, Thomas..	187	Mather, Samuel ...	178
Majestic .....	90	Mather, W. G. ....	45
Malietoa .....	183	Mathewston .....	200
Manila .....	23	Mathiott, E. G. ...	170
Manitoba .....	34	Matton .....	141
Manitou .....	68	Matton 10 .....	141
Manitoulin .....	173	Matton 20 .....	141
Manitowoc .....	223	Matton 21 .....	141
Manitowoc .....	230	Matton, John E....	147
Manseau No. 2.....	136	Matton, Ralph E....	141
Manseau No. 101....	136	Maunaloa .....	183
Manseau No. 104....	136	Mayer, Oscar F....	90
Manseau No. 105....	136	Mead, George W....	62
Manseau No. 107....	136	Meadcliffe Hall ...	98
Mantadoc .....	174	Meade, G. G. ....	223
Manuel, John S. ...	106	Meaford .....	29
Maple .....	225	Medill Joseph .....	39
Maplebranch .....	136	Meldrum, H. A. ...	141
Mapleheath .....	29	Menasha .....	223
Marguerite T. ....	205	Mercury .....	46
Marguerite W. ....	126	Merganser .....	222
Marigold .....	225	Merle H. ....	126
Marinette .....	223	Merle J. ....	121
Marion .....	90	Messenger .....	161
Mariposa .....	23	Mexoil .....	94
Marita .....	22	Meyer, John E. ...	
Maritana .....	23	(see James, Jesse)	



Rely upon these safe aids to  
navigation!

## SOHIO MARINE LUBRICANTS

Shippers want safety aids *below* decks, too! For your ship's heart—its machinery—must have *rough, sure-working* lubricants for protection under the stress and strain of the toughest seas. *SOHIO Marine Lubricants* will do that job for you—will hold their body under load and *not thin out* under heat. So save yourself worry and trouble—use *SOHIO Marine Lubricants*. Phone your nearest distributor, (see next page) for *any* marine lubricant need.

# SOHIO *Marine* LUBRICANTS

**THE STANDARD OIL CO. (OHIO)**

Marine Sales Dept.—MAin 7400

MIDLAND BLDG., CLEVELAND, OHIO

**CALL AT THESE CONVENIENT  
LAKE PORTS**

—where these ship chandlers stock  
**SOHIO Marine Lubricants**

#### ASHTABULA

The McKinnon Iron Works  
493 E. 5th St.  
Phone—HARbor 5320-J  
**BUFFALO, N. Y.**  
The Upson Walton Co.  
182 Ohio St.  
Phone—CLEve. 4027 Day  
GRant 0050 Night

#### CLEVELAND

The Upson Walton Co.  
1310 W. 11th St.  
Phone—MAin 7444 Day  
BOulevard 7817 Night

#### CONNEAUT

Pittsburgh Steamship Co.  
At the Dock, Phone—42-901

#### ERIE, PA.

A. H. Brebner & Son  
425 State St.  
Phone—C55-121 Day  
C55-119—22-726 Night

#### FAIRPORT

Beacon Market  
At the Dock  
Phone—Painesville 3641 Day  
Painesville 6065 Night

#### HURON

Henes & Wilkes  
Main St.  
Phone—4371 Day—4514 Night

#### LORAIN

W. W. Alten Hdwe.  
353 Broadway Phone—4238

#### SANDUSKY

Camp St. Market  
1046 Camp St.  
Phone—Market 330 Day  
233W or 2664J Night

#### TOLEDO

The Hardy & Dischinger Co.  
121 St. Clair St. N.  
Phone—Main 1124 Day  
Walbridge 4651 Night

27

Vessel	Fleet No.	Vessel	Fleet No.
Michigan .....	45	Mudge, Edmund W.	100
Michigan .....	90	Mullen, Martin .....	106
Michigan .....	93	Munising .....	45
Michigan .....	102	Munson, John G. ....	18
Michigan .....	148	Murphy, Simon J. ...	23
Midland City .....	85	Murray, James J. ...	90
Midland Prince .....	29		
Miller, J. Clare.....	170		
Miller, Governor.....	183		
Mills, D. O. ....	178		
Milwaukee .....	95		
Milwaukee .....	223		
Milwaukee Clipper	235		
Minch, Philip .....	211		
Minnesota .....	93		
Minnie .....	50		
Miseford .....	144		
Misener, Scott .....	200		
Mississippi .....	93		
Missouri .....	93		
Missouri .....	235		
Mitchell, Pentecost..	183		
Mitchell, Samuel.....	105		
Mitschfibre .....	69		
Mogul .....	90		
Mohawk Belle .....	104		
Mondoc .....	174		
Mont Louis .....	98		
Montana .....	93		
Montauk .....	47		
Montcalm, General	136		
Montcalm Derrick			
No. 1 .....	136		
Moody, R. E. ....	170		
Morgan, J. Pierpont .....	183		
Morgan, Jr., J. P.	183		
Morrell, Daniel J. ...	14		
Morrison, J. D. ....	50		
Morrison, Capt.			
T. W. ....	136		
Morse, Jay C. ....	178		
Morse, Samuel			
F. B. ....	183		
Moyra .....	114		
Mud Hen, Miss ....	134		

## N

N.H.B. No. 1.....	156
N.H.B. No. 3.....	156
N.H.B. No. 5.....	156
N.H.B. No. 6.....	156
Nadine .....	144
Nashville .....	17
Nassau .....	80
Nebraska .....	93
Neenah .....	223
Negaunee .....	45
Neptune .....	120
Neston, Frank .....	75
Nettleton, A. E. ....	92
Nevada .....	93
Nevada .....	235
New Hampshire ...	93
New Jersey .....	90
New Jersey .....	93
New Mexico .....	93
New Welland .....	136
New York .....	17
New York .....	90
New York .....	93
New York News....	191
Newbrundoc .....	174
Newman, T. F. ....	93
Niagara .....	89
Nine .....	154
Nipigon .....	2
Nisbet, Watkins F.	227
No. 3 .....	222
No. 4 .....	147
No. 54 .....	90
No. 55 .....	90
No. 56 .....	90
No. 83 .....	146

**SOHIO**







A finish for every surface,  
and a full line of high  
quality Marine Paints,  
Varnishes and Enamels  
conveniently available at  
all chief lake ports.



## THE SHERWIN-WILLIAMS Co.

Cleveland, O. 1800 Builders Exch. Bldg.  
Buffalo, N. Y. 1350 Main St.  
Chicago, Ill. 115th St. & Cottage Grove Ave.  
Detroit, Mich. 1960 Milwaukee Ave., E.

Vessel	Fleet No.	Vessel	Fleet No.
Pollock, W. G. ....	151	Red Crown .....	209
Pomeroy, Robt. W. 227		Red Crown .....	233
Ponoka .....	226	Redcloud .....	166
Pontiac .....	45	Redfern .....	166
Pontoon .....	93	Redriver .....	166
Pope, E. C. ....	164	Redwood .....	166
Porter, Hector .....	184	Reed, James H. ....	178
Porter, Lawrence T. 184		Rees, W. D. ....	35
Porter, Letitia ....	184	Regent .....	97
Portwell .....	200	Reidenbach, R. P. ..	93
Post, G. G. ....	170	Reiss .....	193
Pratt, John .....	204	Reiss Brothers ....	194
Prescodoc .....	174	Reiss, Clemens A. 194	
Prescotont .....	33	Reiss, J. L. ....	194
Prescott .....	29	Reiss, John P. ....	194
Presque Isle ....	45	Reiss, Otto M. ....	194
Price, John H. ....	98	Reiss, Peter .....	194
Princeton .....	183	Reiss, Richard J. ...	194
Prindoc .....	174	Reiss, William A. ..	194
Progress .....	134	Reliance .....	93
Progresso .....	145	Relief .....	93
Pronto .....	222	Rensselaer .....	183
Prudence .....	126	Renvoyle .....	29
Purvis, E. D. M. ....	188	Rescue .....	93
Put-in-Bay .....	9	Resolute .....	93
		Reynolds, W. M. ....	98
		Rhode Island .....	93
		Richards, J. B. ....	277
		Richardson .....	154
		Richardson, W. C. ...	170
		Richelieu .....	29
		Rideaulite .....	108
		Rival .....	204
		Riverton .....	200
		Robbins, S. H. ....	234
		Roberts, Jr., P. ....	183
		Robinson, C. S. ....	178
		Robinson, Lucius	
		W. ....	98
		Robinson, T. W. ....	18
		Roche, John J. ....	80
		Rocket .....	162
		Rockcliff Hall .....	98
		Rockwood .....	164
		Roebling .....	183
		Roen, John .....	197

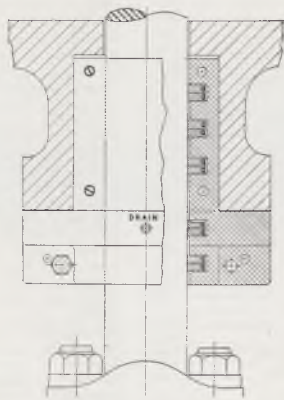
### Q

Quebec .....	29
Quebec .....	174
Queen City .....	183
Quintus .....	220

### R

R. C. Co. Tug	
No. 1 .....	198
Racine .....	93
Racine, Pierre .....	204
Rammacher, J. J. ...	227
Ramona .....	104
Rand, Geo. F. ....	16
Ranney, Rufus P. ...	214
Rapids Prince .....	29
Ream, Norman B. ...	183

# FRANCE Split Case Marine Packing



TYPE No. 250

Type illustrated is furnished for intermediate and low pressure piston rods also all valve rods. It contains three pairs of pressure rings, one pair of condensation stripping rings and a pair of rings to protect vacuum. Packing for high pressure rods is of the same construction except that it contains an additional uppermost groove provided with a breaker ring.

### MARTELL PACKINGS

We possess the only records of this type of packing having purchased the Martell Packing business in 1931. Renewals and replacements furnished accurately and promptly.

## THE FRANCE PACKING COMPANY

Tacony, Philadelphia

Great Lakes Representative:

Frank D. Foster  
407 The Arcade Cleveland, Ohio  
Phone: C Herry 6357

Vessel	Fleet No.	Vessel	Fleet No.
Roen, John Jr. ....	197	Saturn .....	178
Roger M. ....	50	Saucon .....	14
Rogers City .....	149	Sault Ste. Marie....	222
Rogers, G. W. ....	30	Saunders, E. N. Jr. 151	
Rogers, Henry H. ..	183	Savannah .....	220
Ronan, P. C. ....	141	Scandrett .....	95
Roosevelt, Theodore	41	Schiller, Wm. B. ....	183
Rouille .....	184	Schneider, Cletus ..	45
Royalite .....	108	Schneider, Pam ....	45
Royalton .....	200	Schoellkopf, J. F.	

### S

S. O. Co. "C" .....	209	Schoonmaker, Col.	
Sabin, L. C. ....	93	J. M. ....	203
Sachem .....	72	Schupp, Wm. ....	219
Safeguarder .....	31	Schwab, Chas. M. ..	178
Sagamore .....	22	Scobell, Jos. C. ....	78
Saginaw .....	170	Scott, T. J. ....	202
Saguenay .....	29	Scout .....	90
St. Clair .....	37	Sea Bird .....	121
St. Heliers .....	31	Seath, David .....	136
St. Laurent .....	205	Secord, Capt. C. D. 155	
St. Lawrence .....	29	Seandbee .....	44
St. Marys .....	222	Selkirk .....	29
St. Mary's River		Sellwood, Joseph ..	178
Patrol .....	225	Sensibar, J. R. ....	170
Ste. Claire .....	15	Serieux .....	186
Ste. Marie .....	135	Service .....	6
Salvage Prince ....	189	Seubert, E. G. ....	209
Salvage Queen ....	189	Shamrock .....	146
Salvus .....	26	Shasta .....	20
Sand Boy .....	189	Shaughnessy, Sir T. 155	
Sandcraft .....	53	Shaughraun .....	72
Sandland .....	212	Shaw Rhue .....	72
Sandmaster .....	53	Shaw, Howard L. ..	227
Sandusky .....	93	Sheadle, J. H. ....	45
Saracen .....	109	Shelter Bay .....	191
Sargent .....	95	Shenango .....	203
Sarnia City .....	204	Sherwin, John .....	178
Sarniadoc .....	174	Shiras, McGilvray..	183
Sarnian .....	227	Shuniah .....	184
Sarnolite .....	108	Sicken, M. ....	58
Saskadoc .....	174	Sid Jr. ....	6
Saskatoon .....	29	Sierra .....	214
		Simard, Capt. ....	136
		Simcoe .....	29



# ELGIN SLUDGE DECONCENTRATOR

The ELGIN System makes a boiler self-cleaning, permitting long periods between washouts. Sludge and mud are removed while the boilers are in service. Deconcentrators insure:

No Mud No Sludge No Scale  
Better Circulation Clean Boilers

## Elgin Chemical Treatment

ELGIN Balanced Chemical Treatment and ELGIN Service prevent scale, corrosion and embrittlement. Fleet supervision insures uniformity of boiler water control for each steamer.

WRITE FOR MARINE BULLETIN

## Elgin Softener Corporation

ELGIN, ILLINOIS

Vessel	Fleet No.	Vessel	Fleet No.
Thompson, C. A. ..	151	Vega .....	178
Thompson, D. P. ..	106	Venus .....	178
Thompson, Smith ..	92	Vercheres .....	31
Thunder Bay Quar-		Vermont .....	93
ries .....	16	Verona .....	178
Tionesta .....	95	Victoria .....	25
Tipperary .....	146	Victorious .....	227
Toledo .....	90	Virginia .....	63
Toledo .....	93	Virginia .....	93
Tomlinson, G. A. ..	106	Virginia, Joan .....	131
Tommy T. ....	121		
Torian, George L. ..	227		
Torondoc .....	174		
Torrent .....	153		
Tourist .....	86		
Townsend, E. Y. ....	14		
Transiter .....	217		
Translake .....	217		
Transport .....	197		
Transriver .....	217		
Tremaine, Morris S. .	62		
Trenora .....	119		
Trillium .....	216		
Trimble, Richard ..	183		
Troisdac .....	174		
Turbo .....	90		

## W

Wabash .....	7		
Wahcondah .....	1		
Wahnapiatae .....	99		
Wallace, J. C. ....	178		
Wallace, Robt. B. ..	234		
Walnut .....	225		
Walsh, James P. ..	106		
Walters, Thomas ..	113		
War Horse .....	90		
Warren, Wm. C. ....	227		
Warrenco .....	189		
Warrior .....	71		
Washington .....	93		
Waterbus .....	85		
Waterton .....	200		
Watson, R. H. ....	183		
Watt, James .....	164		
Waubauskene .....	143		
Waukegan .....	93		
Wawasee .....	233		
Way, S. B. ....	170		
Wayne .....	231		
Weddell, Robt. G. ..	136		
Weed, Shelton .....	227		
Weir, David M. ....	100		
Weir, Ernest T. ....	106		
Welland .....	31		
Wellandoc .....	174		
Wellston .....	233		
Wenzell .....	222		
West, B. E. ....	65		
West, Charles C. ..	196		

## V

Valley Camp .....	228
Vandoc .....	174

# COAL

## MODERN FUEL DOCK

Located conveniently on St. Clair  
River beside International Tunnel.

## Quality Coal Fast Fueling

24 HOUR SERVICE  
ACCURATE WEIGHTS

Marine Agents  
VACUUM OIL COMPANY

*Complete Stock Available*

Telephone Pt. Huron 21321  
Radio via. Pt. Edward

## Port Huron Coal & Dock Company

PORT HURON, MICH.

Operated by  
The Cleveland-Cliffs Iron Company  
Cleveland, Ohio

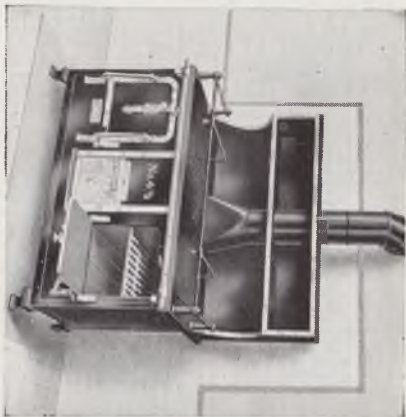
Vessel	Fleet No.	Vessel	Fleet No.
Westcoat, L. S. ....	94	Wolf, General .....	136
Western States ....	62	Wolfe Islander .....	236
Westmount .....	29	Wolcott .....	222
Weyburn .....	29	Wolvin, A. B. ....	178
Whalen, E. C. ....	50	Wood, Joseph .....	100
Whalen, James .....	226	Woodruff, Graham	
Wheeler, E. S. ....	222	C. ....	165
White, Peter .....	45	Workboy .....	30
White, W. F. ....	18	Wyandotte .....	237
Whitney, Wm. A... 147		Wyman, Walter ...	
Widener, P. A. B... 133		(see Ann L.)	
Wilkinson, H. S. ... 92		Wyoming .....	93
Willard, Daniel .... 95			
Willard L. ....	53		
Williams, Harry B. 90			
Williams, H. D. .... 133			
Williams, John C. .. 100			
Williams, John R... 90			
Willowbranch .....	136		
Wilmette .....	224		
Wilmington .....	224		
Wilson, Capt. Thos. 234			
Windoc .....	174		
Windsolite .....	108		
Windsor .....	230		
Winnipeg .....	29		
Winyah .....	42		
Wisconsin .....	93		
Wolf, William H. .. 84			

Y	
Yale .....	93
Yates, Harry .....	16
York, Miss .....	216
Yosemite .....	45
Young, Col. E. M... 214	
Young, John .....	156
Youngstown .....	178

Z	
Zenda .....	114
Zenith City .....	183
Zephyr .....	46
Ziesing, August .... 133	



### REPAIRS FROM YOUR DEALER OR DIRECT

<b>ALPENA</b>	Huron Industries Co.	<b>HURON</b>	Henes & Wilkes
<b>ASHTABULA</b>	Miller & Anderson	<b>LORAIN</b>	Lorain Hardware Co.
<b>BAY CITY</b>	Jennison Hardware Co.	<b>MANTOWOC</b>	Chas. N. McHenry
<b>CLEVELAND</b>	The Wm. Bauer Co.	<b>MILWAUKEE</b>	Wm. Rathsock & Sons
<b>DETROIT</b>	Fred Marriot	<b>SANDUSKY</b>	H. Johnson Co.
<b>DULUTH</b>	Detroit Marine Supply Co.	<b>SANDUSKY</b>	Camp Street Market
<b>ERIE</b>	Constans-Duluth Marine Inc.	<b>SHEBOYGAN</b>	Holler Furnace & Sheet Metal Co.
<b>FAIRPORT HARBOR</b>	Carl H. Meiser	<b>SOUTH CHICAGO</b>	H. C. SHEBOYGAN
<b>GRAND RIVER</b>	Hills Hardware & Piling Co.	<b>TOLEDO</b>	Berthiaume, Inc.
<b>RUSSELL &amp; WATSON, Inc.</b>	Valley Camp Stores Co.	<b>VALLEY CAMP STORES CO.</b>	Jas. A. Black Hdw. Co.
<b>BUFFALO, N. Y.</b>			H. F. Beagle Meat Co.
			Hardy & Dischinger Co.
			Valley Camp Stores Co.

## OWNERS, MASTERS AND ENGINEERS OF LAKE VESSELS

Unless otherwise designated, all vessels are steamers. M. V. denotes motor vessels. Figures after bulk freighters are, in order, keel length, beam, depth, hatches, and gross tons carrying capacity at 20-foot draft. Tonnage figures for other vessels are their capacity loading, in gross tons. In personnel, name of captain is given first, and chief engineer second. Asterisk indicates carryover of 1940 appointments, no response having been received to questionnaire for 1941.

	Captain	Chief Engineer
1	<b>Abitibi Navigation Co. Ltd., P. O. Box 308 Terminal A., Toronto, Ont.</b>	
	Wahcondah .....	R. J. Montgomery ..... J. Barrett
2	<b>Abitibi Power &amp; Paper Co., Ltd., Woods Dept., Port Arthur, Ont.</b>	
	G. T. Clarkson, Receiver and Manager	
	H. M. Renwick, Superintendent Engineer	
Abitibi (m.v.) .....	D. A. Williams .....	K. Jansen
Gargantua .....	P. J. Ramsay .....	T. O'Reilly
Goki (m.v.) .....	J. Willans .....	H. Maki
Kam (m.v.) .....	R. L. MacVittie .....	J. S. Moore
Magpie (m.v.) .....	J. Griffiths .....	F. Reaume
Nipigon (m.v.) .....	G. D. Martin .....	W. Service
Orient Bay (m.v.) .....	G. G. Harris .....	F. Howson

# TOLEDO SHIPBUILDING COMPANY, INC.

GENERAL OFFICE and PLANT  
2245-2357 Front Street  
TOLEDO, OHIO

Telephone

Pontiac 1501-1502-1503-1504

CLEVELAND OFFICE

1542 ROCKEFELLER BLDG.

Telephone Main 7754

REPAIRS

DRY DOCKING

RECONSTRUCTION

NEW CONSTRUCTION

Chief Engineer

Captain

3	<b>Algoma Central &amp; Hudson Bay Railway Co. (Owner and Operator)</b>		
	G. H. Shanks, Superintendent		
	Algocen .....	504-54-30 9,500	M. A. Livingstone .....
	Algorail .....	346-48-28 5,500	Chas. T. Beatty .....
	Algosoo .....	346-48-28 5,500	A. H. Blackwell .....
	Algosteel .....	480-52-30 8,500	M. A. Loughheed .....
	Algokay .....	365-50-28 6,000	James Sykes .....
	(nee John J. Boland Jr.)		A. M. MacInnes M. C. Tymon D. A. McConnell Bert Myler S. H. Wheeler

### Allied Oil Transport Co. Inc. (See Fleet No. 46)

4	<b>Allouez Marine Supply Co., 3815 Itasca St., Superior, Wis.</b>	
	G. L. Bug (tug) .....	Charles Worsley
	G. L. Hallam Bros. (tug) .....	Maurice St. George
5	<b>American Construction Co., 515 Marlon Bldg., Cleveland (Operator)</b>	
	American Construction Co., Owner	
	Atlas (tug) .....	Patrick Chambers .....
	Aubrey (tug) .....	Leonard R. Reilly George T. LaLonde .....

6	<b>American Ship Building Co., The, 1410 Terminal Tower, Cleveland</b>	
	(Owner and Operator)	
	No appointments made	
	At Buffalo: Repair steamer Service; steam tug Edward E.; steam launches Amership and H. G. Smith; derrick scow No. 8.	
	At Chicago: Repair launches Chicago Ship No. 1, C.S.B. 2; and Chicago Ship No. 3.	

**Captain** **Chief Engineer**

At Cleveland: Repair steamer The Craftsman; repair launch Amership; motor launches Cleveland Ship and Globe Ship.  
 At Lorain: Motor launches Lorain Ship and Hustler.  
 At Superior: Repair steamer Robert J. Close; repair launch Superior Ship.  
 At Toledo: Motor launch Sid, Jr.; repair scow American.

**6A American Steel & Wire Co., Rockefeller Bldg., Cleveland (Owner & Operator)**  
 E. R. Cassidy, Manager Lakes Transportation Dept.  
 Steel Chemist ..... J. E. Woerpel ..... W. R. Wright  
 Steelvender ..... G. L. Kane ..... J. A. Merrett

**American Steamship Co. (See Fleet No. 16)**

**7 Ann Arbor Railroad Co., Frankfort, Mich. (Operator)**  
 Ann Arbor Railroad Co., Toledo, O. (Owner)  
 O. T. Larson, Marine Superintendent

Ann Arbor No. 3 .....	W. G. Beaucock .....	Emil Stolson
Ann Arbor No. 5 .....	M. G. Roen .....	S. Arnerson
Ann Arbor No. 6 .....	A. B. Jacobsen .....	M. Dahlgren
Ann Arbor No. 7 .....	A. A. Straubel .....	S. J. Hawkins
Wabash .....	B. H. Hanson .....	George Johnson

**8 Arnold Transit Co., Mackinac Island, Mich. (Owner and Operator)**

Elva .....	not in commission
Mackinac Islander .....	Hillard Bentgen ..... Robt. MacArthur
Ottawa .....	no appointments made
D. P. Perry .....	not in commission

**Captain** **Chief Engineer**

**9 Ashley & Dustin Steamer Line, 170 First St., Detroit (Owner and Operator)**  
 Put-in-Bay (passenger) ..... John N. Peterson ..... Edw. Gelnow

**Automotive Trades Steamship Co. (See Fleet No. 62)**

**10 Barnett & Record Co., 429 N. Fifth St., Superior, Wis. (Owner and Operator)**  
 D. J. McKinnon, Agent

America (derrick scow) .....	Emil Carlsen .....	Adolph Nelson
------------------------------	--------------------	---------------

**Bay Quinte Transportation Co. Ltd., Picton, Ont. (Owner and Operator)**

C. D. Wilson, Port Captain

Glen Allen .....	Ben Bowen .....	John G. Reid
------------------	-----------------	--------------

**Bay Transportation Co., Sandusky, O. (Owner and Operator)**

A. Kuebeler Jr., President and General Manager

G. A. Boeckling .....	Otto Wyss .....	George Alheit
-----------------------	-----------------	---------------

**Becker, Frank, Towing Co., 4103 W. Jefferson Ave., Detroit (Owner)**

George Klemm, Manager

B. H. Becker (motor tug) .....	Ivan Brussick
G. F. Becker (tug) .....	

**14 Bethlehem Transportation Corp., 2600 Terminal Tower, Cleveland (Operator)**  
 F. C. Oakes, Manager; Albert H. Amhaus, Fleet Engineer

Bethlehem Steel Co. (Owner)

Bethlehem .....	580-60-32	12 12,100	Edward P. Fitch .....	Homer T. Stearns
Cambria .....	504-54-30	12 9,400	John Ward .....	N. A. Perry



			Captain	Chief Engineer
Lackawanna	530-56-31	12 10,200	Andrew Andrews	R. P. Frye
Lebanon	530-56-31	12 10,200	V. L. Hosner	W. J. Cunningham
Lehigh	525-55-31	12 9,800	W. J. Colson	Valentine Kraemer
Maryland	530-56-31	12 10,200	Charles Lindsay	E. H. Parry
Saucon	549-56-31	12 10,500	Fred DesJardins	Fred Beebe
Steelton	504-54-30	12 9,400	Wilfred Couture	F. Edward Beger

**Cambria Steamship Co. (Owner)**

Daniel J. Morrell	580-58-32	24 11,300	J. B. Sullivan	Stanley Hopton
Edw. Y. Townsend	580-58-32	24 11,300	Fred Sturtevant	George Pennycook

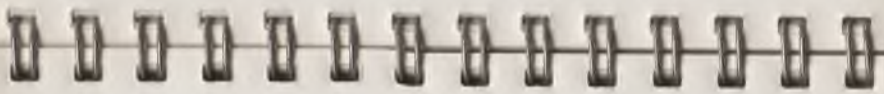
**Mahoning Steamship Co. (Owner)**

William H. Donner	504-54-30	24 9,400	G. Oscar Dalrymple	Thomas Griffiths
Leonard C. Hanna	504-54-30	12 9,400	W. R. Jerome	J. A. McCarron
Powell Stackhouse	504-54-30	12 9,400	Martin Johnston	S. K. Ramberg

**Bison Steamship Corp. (See Fleet No. 16)**

**15 Bob-Lo Excursion Co., Foot of Woodward Ave., Detroit  
(Owner and Operator)  
(All vessels are ferries)**

Britannia	.....	not in operation		
Cadillac	.....	not in operation		
Columbia	.....	not in operation		
LaSalle	.....	John J. Denstaedt	Edward Seymour	
Ste. Claire	.....	not in operation		
		Charles H. Anderson	Donald Reid	



**16 Boland & Cornelius, Marine Trust Bldg., Buffalo (Operator)  
Ray T. Carter, Marine Superintendent  
American Steamship Co. (Owner)**

Achilles	514-65-39'6"			
John J. Boland	480-52-30	12 8,600	Martin Walle	John Berg
Consumers Power	504-56-30	12	George Anderson	Frank McCarthy
Adam E. Cornelius	420-52-28	24 7,200		
Adam E. Cornelius Jr.	418-48-28	24 6,500		
Diamond Alkali	580-60-32	12		
Dow Chemical	504-56-30	12		
Fontana				
Jason	514-65-39'6"			
Norman J. Kopmeier	504-54-30	12	James Herbert	Louis Bundschuh
Geo. F. Rand	532-58-32	12	Lawrence Goudie	Julius Lawrence
J. F. Schoellkopf Jr.	532-56-30	12	Joe Peterson	Sam Conners
Edmund P. Smith	480-54-30	24 8,700	Gus Carlson	John Cunningham
Standard Portland Cement	444-56-28	24 8,000	J. Heffernan	Dan McCarthy
Thunder Bay Quarries	504-54-30	24	Pat Williamson	Ted Cand
U. S. Gypsum	504-56-30	12	Charles McNally	Dan Darcy
Harry Yates	444-56-28	24 8,000	Patrick Healy	Percy Worden
			Even Solbert	Charles Dowd
			Harvey Stewart	Joe Miller
			James Healy	Harold Goodwin
			Bison Steamship Corp. (Owner)	
John Gehm	251-44-21		Norman Anchor	Al Hollendeck
O'Hagan	251-44-21		Harry Beauvis	Frank Wetzel

	<b>Captain</b>	<b>Chief Engineer</b>
	Lake Chelan Steamship Corp. (Owner)	
Lake Chelan .....	252-44-18	William Russel..... Clarence Hollendeck

**17 Booth Fisheries Corp., 309 West Jackson St., Chicago**  
(Owner and Operator)

Nashville (tug) .....	not in operation	
New York (tug) .....	H. Johnson .....	E. J. Fitzpatrick

**18 Bradley Transportation Co., Rogers City, Mich. (Owner and Operator)**  
(All vessels are self-unloaders)

Carl D. Bradley .....	615-65-33	12,000	F. F. Pearse .....	John S. Sparre
Calcite .....	416-54-29	6,000	Donald Nauts .....	Chas. Frederick
John G. Munson .....	530-60-32	9,500	C. A. Thorsen .....	Arthur Urdal
T. W. Robinson .....	566-60-32	10,000	Theo. Dahlburg .....	Guy LaBounty
B. H. Taylor .....	530-60-32	9,500	Crossley McQuinn .....	Thos. Suttle
W. F. White .....	530-60-31	9,500	M. R. MacLean .....	J. A. Anderson

**Branch Lines Ltd. (See Fleet No. 136)**

**19 British-American Oil Co. Ltd., Royal Bank Bldg., King and Yonge Sts., Toronto, Ont. (Operator)**

	W. G. Smith, Superintendent	
Britamoil .....	W. F. Garrett .....	Geo. Bragg
Britamolene .....	B. J. Zink .....	W. D. McCann
Britamlube .....	D. M. Murphy .....	John Scott
Britamoco .....	J. R. Anderson .....	J. Sweeting
Britamette (m. v.) .....	C. O. Sensabaugh .....	F. H. Brickenden

	<b>Captain</b>	<b>Chief Engineer</b>
<b>20</b>	<b>Brown &amp; Co., Chamber of Commerce Bldg., Buffalo (Operator)</b>	
	Brown Steamship Co. (Owner)	

J. J. H. Brown .....	432-52-28	12	7,500	H. D. Sellon .....	Leroy Wilcox
Jas. E. McAlpine .....	432-52-28	12	7,500	R. H. Russell .....	Ray Hanel
Shasta .....				E. H. Erickson .....	E. G. Gibb

**21 Brown, Worthy R. & Son, Inc., Lakeside, O. (Owner and Operator)**  
William R. Brown, Port Captain

Lakeside III (tug) .....	Alex Metz
--------------------------	-----------

**22 Bryson, C. W., 823 Rockefeller Bldg., Cleveland (Operator)**  
Copper Steamship Co. (Owner)

Marita .....	172-30-15	650	W. A. DeLand .....	J. L. Scott
Sagamore (barge) .....				

	India Navigation Co. (Owner)		
India (barge) .....	210-32-14	1,200	R. E. Moyer

**23 Buckeye Steamship Co., The, 1508 Rockefeller Bldg., Cleveland**  
(Owner and Operator)

	John T. Hutchinson, President				
Sir Wm. Fairbairn .....	414-46-28	24	6,100	A. C. McLean .....	E. D. Butler
Harry W. Hosford .....	506-50-28	24	7,700	Harold Jacobsen .....	E. R. Liberty
Magna (barge) .....	352-44-26	24	5,600	L. R. Russell .....	F. Summerfield
Maia (barge) .....	376-48-26	24	5,600	John Britt .....	R. W. Harris
Manila (barge) .....	436-50-29	24	7,200	Chester Nichol .....	John Kero
Mariposa .....	330-45-25	24	4,000	A. G. Regan .....	T. Hedglin
Maritana .....	320-45-25	24	3,900	C. Butler .....	J. MacIver

Marsala (barge) . . . . .	436-50-28.6	24	8,000
Alex McDougall . . . . .	413-50-27	24	6,300
Simon J. Murphy . . . . .	428-52-28	24	6,700
Smeaton (barge) . . . . .	446-50-30	24	7,400
Geo. Stephenson . . . . .	408-48-28	24	6,100
Andrew S. Upson . . . . .	380-52-28	12	6,600

Captain		Chief Engineer	
T. K. Woodward . . . . .		A. V. Anderson	
Gus Claussion . . . . .		O. B. Nordstrom	
Arthur Kristiansen . . . . .		John Eskelin	
Mitchell Johnston . . . . .		R. McCleery	
Oakley Keller . . . . .		Leif Jacobsen	
Stanley Anderson . . . . .		L. S. Barry	

24

**Buffalo, City of, Department of Fire**

W. R. Castimore, Commissioner of Fire	
W. S. Grattan (steam fire tug) . . . . .	Patrick J. Mullane . . . . . John J. Dee

25

**Buffalo Gravel Corp., 19 Hudson St., Buffalo (Owner and Operator)**  
Charles F. Strasmer Jr., General Manager

Weston M. Carroll . . . . .	Harry A. Keefer . . . . . Adelbert Hayes
Crescent . . . . .	not in commission
Hyman . . . . .	not in commission
Lakewood . . . . .	Chas. E. Nash . . . . . Joseph T. Whelan
Victoria . . . . .	not in commission

26

**Burke Towing & Salvage Co. Ltd., Midland, Ont. (Owner and Operator)**  
Edward F. Burke, Captain

Fanny Arnold (tug) . . . . .		A. J. Ferguson
Allan No. 2 (barge) . . . . .		Douglas Lethbridge
Fairport (tug) . . . . .	Charles Malcolm . . . . . Fred Gilbert	
Salvus (barge) . . . . .	J. W. Rutherford . . . . . J. P. Horsfall	

**Cambria Steamship Co. (See Fleet No. 14)**

27 **Canada Atlantic Transit Co. of U. S., 384 St. James St., Montreal, Que. (Owner and Operator)**  
R. B. Teakle, Manager

Canatco . . . . .	259-44-26	2,100	T. C. Anderson . . . . . J. W. Crate
Dalwarnic . . . . .	261-44-26	2,100	D. F. Cornett . . . . . D. S. Anderson
Kearsarge . . . . .	350-44-27	3,000	
Arthur Orr . . . . .	353-41-25	2,600	E. Mekelsen . . . . . A. W. H. Jensen

28 **Canada Cement Transport Ltd., Canada Cement Bldg., Montreal, Que. (Owner and Operator)**  
(Both vessels are self-unloaders)

Bulkarier . . . . .	253-43-25		A. Isaac . . . . . Wilson I. Emrick
Cementkarrier (el. m. v.) . . . . .	253-43-20		E. Knudsen . . . . . M. E. Fowler

29 **Canada Steamship Lines Ltd., P. O. Box 100, Montreal, Que. (Owner and Operator)**

W. J. King, Operating Mgr., Montreal; W. R. Scott, Asst. to Dist. Mgr., Cleveland			
Upper Lake Bulk Freighters			
Ashcroft . . . . .	546-60-28	9,250	J. F. Davis . . . . . H. Young
Collingwood . . . . .	386-50-23	5,410	E. Griesbach . . . . . M. Dedman
Donnacona . . . . .	604-59-28	10,580	Jas. Reoch . . . . . C. Lericho
Emperor . . . . .	525-56-27	7,900	J. A. Brown . . . . . M. J. O'Brien
Gleneagles . . . . .	582-60-28	10,000	D. W. Burke . . . . . Geo. Price
Goderich . . . . .	480-54-26	7,500	J. J. Dube . . . . . P. Eagles
Hagerty . . . . .	536-58-27	8,800	E. Walkinshaw . . . . . J. M. Kennedy
Lemoyne . . . . .	621-70-25	12,600	C. E. Robinson . . . . . H. H. Moore

Prescott	494-50-24	7,500
Stadacona	582-60-28	10,100
Westmount	536-58-27	8,900

Captain	Chief Engineer
R. Burke	R. Sinclair
T. S. Patterson	E. Henry
A. F. MacLennan	W. H. Taylor

#### Upper Lakes Package Freighters

Huronic	H. L. Beaton	J. R. Naudie
Renvoyle	W. J. Holler	H. Myler

#### Lower Lake Package Freighters

Beaverton	D. H. Porter	D. J. Leslie
Calgarian	A. Allen	J. Brooks
Canadian	E. Corcoran	T. Nichols
City of Hamilton	J. A. Lepine	J. M. Clark
City of Kingston	J. A. Ferguson	M. J. Sherman
City of Montreal	N. Legault	H. Paus
City of Toronto	M. J. Corkey	W. E. Downing
City of Windsor	A. Francis	L. E. Spencer
Edmonton	R. Anderson	A. J. O'Brien
Fernie	Alex. Wilson	D. G. Pruder
Glenross	A. J. Galloway	W. L. Hurder
Kenora	E. F. Poidevin	Jas. Neilen
Lethbridge	E. J. Shannon	R. W. Howes
Saskatoon	T. R. McLeod	F. Lumley
Selkirk	E. F. Raeburn	J. A. MacDonald
Weyburn	H. R. Baxter	R. H. Isbester
Winnipeg	H. A. Patterson	Jas. Kirk

52

#### Lower Lake Bulk Freighters

Captain	Chief Engineer
C. E. Scott	J. J. Smith
H. Lalberte	F. B. Bonnell
E. A. George	P. J. Rutherford
A. Wilson	J. Dyson
H. J. Clarke	M. Parry
Geo. C. Kirk	E. C. Fleming
J. G. R. Toupin	G. W. Clark
J. R. Lamarre	A. J. McChristie
D. Nolan	D. F. Lockwood
H. A. Leaney	E. L. Warner
G. Lefebvre	A. Meikle
W. J. Hore	W. J. McWilliam
A. Bonin	Jas. Bennett
J. Leblanc	M. Rankin
J. W. Scarrow	J. Neville
V. Chartier	M. Manner

53

#### Self-Unloaders

Coalhaven	L. G. Bird	A. V. Smith
Collier	T. W. Adam	R. M. Bonnell
Glenelg	N. J. Reoch	A. P. Norris
Midland Prince	P. Beatty	Jas. Douglas
Osler	R. Belcher	J. B. Polding

#### Eastern Division Passenger Steamers

Quebec	C. H. Burch	N. Peloquin
--------	-------------	-------------

	<b>Captain</b>	<b>Chief Engineer</b>
Rapids Prince .....	P. J. Cherry .....	E. Lenneville
Richelieu .....	C. A. Bodensieck .....	Geo. Bourret
Saguenay .....	E. T. Simard .....	L. Plante
St. Lawrence .....	A. Delage .....	O. Peloquin
Tadoussac .....	W. Gagne .....	N. Crepeau

**Western Division Passenger Steamers**

Cayuga .....	H. Webster .....	J. F. Henry
Kingston .....	B. A. Bongard .....	G. W. MacDonald

**Northern Division Passenger Steamers**

Hamonic .....	Wm. Taylor .....	J. G. McHattie
Noronie .....	H. J. Aitken .....	J. W. McLeod

**Tree Line Navigation Co. Ltd.**

Elmbay .....	L. S. MacIntyre .....	L. Morinville
Sprucebay .....	A. J. Story .....	J. A. Lentz
Teakbay .....	P. Morinville .....	R. Gibson

**30 Canadian Dredge & Dock Co., Ltd., 302 Harbour Commission Bldg.  
Toronto, Ont. (Owner and Operator)**

A. M. German, General Manager  
(All are tugs)

J. A. Cornett .....	Wilfred J. Hand .....	Forrest Howson
Frank Dixon .....	F. Scott .....	R. W. Chetley
R. J. Foote .....	George D. Beckett .....	

A. M. German .....
F. W. Grant .....
Hector .....
A. M. Macaulay .....
G. W. Rogers .....
E. Smillie .....
Workboy .....

<b>Captain</b>	<b>Chief Engineer</b>
S. B. English .....	George Young
J. H. Gillem .....	Mat. Ryckman
not in commission	
Wm. Oates .....	Fred Chester
H. Gehl .....	Joseph Hamley
Donald McKay .....	
Joe E. Bell .....	

**31 Canadian Government, Department of Transport, Ottawa, Ont.**

R. K. Smith, Director of Marine Service  
Marine Service

Out of Prescott:	
Grenville .....	J. T. M. Barry .....
Out of Montreal:	
Argenteuil .....	Thomas Weir .....
Safeguarder .....	J. E. Aussant .....
Out of Parry Sound:	
St. Heliers .....	J. Ouellette .....

J. E. St. Laurent, Chief Engineer  
River St. Lawrence Ship Channel Service

Out of Sorel:	
Berthier .....	D. Beaudet .....
Frontenac .....	U. Blais .....
Vercheres .....	V. Laforest .....

**Captain**  
**E. B. Jost, General Superintendent of Canals**  
**Canal Service**  
**(All are tugs)**

**Chief Engineer**

<b>At Montreal:</b>			
Lachine Canal .....	J. L. M. Gagne.....	J. A. Laliberte	
Lavaltrie .....			
Welland .....			
<b>At Carillon canal:</b>			
Carrillon .....		H. Lapierre	
<b>At Chambly canal:</b>			
Chambly .....	Gaston Cayer.....	A. Garceau	
<b>At Cascades Point:</b>			
Soulanges .....	N. Lafrance.....	T. L. Hayes	54
<b>At Cornwall:</b>			
W. A. Bowden .....	C. Hart.....	L. McLatchie	
<b>At Port Weller:</b>			
Lavoilette .....	J. J. Conlon		
<b>At Sault Ste. Marie:</b>			
Batchawana .....		G. E. Coe	
<b>At Peterborough:</b>			
Bessie Butler .....	H. J. Young.....	W. Gillman	
Bob Hall .....	J. A. Dorris.....	G. Noyes	
Katchewan .....	W. Copperthwaite.....	R. Brotherstone	
<b>At Ottawa:</b>			
Agnes P. ....	B. Ranger.....	J. Beaton	
Loretta .....	M. Egan.....	O. Seguin	

**Captain**

**Chief Engineer**

<b>32</b>	<b>Canadian National Railways, Windsor, Ont. (Owner and Operator)</b>		
	J. F. Pringle, General Superintendent		
Huron (car ferry) .....	not in commission		
C. F. Lansdowne (car ferry) .....	A. Baillargeon.....	William Belsom	
(See also Fleet No. 163)			
<b>33</b>	<b>Canadian Pacific Car &amp; Passenger Transfer Co., Ltd., Prescott, Ont. (Owner and Operator)</b>		
Prescotont (tug) .....	A. R. Henry.....	A. Stillson	
Ogdensburg (car ferry) .....	A. R. Henry.....	A. Stillson	
<b>34</b>	<b>Canadian Pacific Railway Co., Montreal, Que. (Owner and Operator)</b>		
	A. Gallagher, Superintendent, Great Lakes Steamships, Port McNicoll, Ont.		
Alberta .....	Jos. Bishop.....	D. W. Ramsay	
Assinibola .....	F. S. Middleton.....	W. S. Struthers	
Athabasca .....	F. E. Logan.....	Geo. S. Rae	
Keewatin .....	J. P. Pearson.....	Geo. D. Adam	
Manitoba .....	J. R. Stewart.....	W. F. Irvine	
<b>35</b>	<b>Cargo Carriers Inc., 2809 Field Bldg., Chicago (Owner and Operator)</b>		
W. D. Rees.....	396-45-28	5,400	
<b>36</b>	<b>Cement Transit Co., 1000 Midland Bldg., Cleveland (Owner and Operator)</b>		
Daniel McCool (m. v.) .....	144-33-15		
	W. J. Petrosky.....	Ben Hanson	

	Captain	Chief Engineer
37	<b>Chatham Dredging &amp; General Contracting Co., Chatham, Ont. (Owner and Operator)</b>	
Aurelia (tug) .....		
Loo Loo (derrick scow) .....		
St. Clair (dipper dredge) .....		
John R. Stover (tug) .....	Frank Sinnott.....	Hugh McMillan
38	<b>Chicago, Duluth &amp; Georgian Bay Transit Co., 2270 National Bank Bldg., Detroit (Owner and Operator)</b>	
Alabama (passenger) .....	Morgan Edgcomb .....	G. E. Suckow
North American (passenger) .....	Richard A. Harreutt.....	C. T. Vermurlen
South American (passenger) .....	William T. Bright .....	H. J. Wilson
39	<b>Chicago Fire Department, City Hall, Chicago (All are fireboats)</b>	
Fred A. Busse .....	William McMahon.....	George McClane
	Joseph Wright .....	Charles Dorow
Joseph Medill .....	Jerry Carter .....	Patrick Cullman
		Edw. Sheridan
40	<b>Chicago-Milwaukee Steamship Line, Navy Pier, Chicago (Owner) Edward E. Taylor, Manager</b>	
City of Grand Rapids (passenger) .....	O. C. Bjork.....	John Golden
41	<b>Chicago Roosevelt Steamship Co., 131 E. Wacker Drive, Chicago (Owner and Operator) J. E. Thiell, Vice President and General Manager</b>	
Theodore Roosevelt (passenger) .....	H. J. Delatre.....	Joseph Peroutka

536

	Captain	Chief Engineer
42	<b>Christiansen, H. &amp; Sons, Duluth (Owner and Operator) O. E. Christiansen, Port Captain</b>	
Winyah .....	Ole Berg .....	Roy Oss
43	<b>Cleveland &amp; Buffalo Transit Co. of Delaware, East 9th St, Pier, Cleveland (Owner)</b>	
City of Erie .....	not in commission	
44	<b>Cleveland &amp; Buffalo Transit Co. of Illinois, 333 No. Michigan Blvd., Chicago (Owner and Operator)</b>	
Seeandbee .....	A. D. Strachan .....	Wm. Robinson
45	<b>Cleveland-Cliffs Iron Co., 1460 Union Commerce Bldg., Cleveland (Operator) Cleveland-Cliffs Steamship Co. (Owner) A. E. R. Schneider, Manager Marine Department C. O. Rydholm, Fleet Captain; James H. Durkin, Fleet Engineer</b>	
Cadillac .....	380-50-28	24 6,200
Frontenac .....	580-60-32	24 11,700
Grand Island .....	480-52-30	24 8,500
Hennepin .....	504-54-30	12 9,200
Ishpeming .....	530-56-31	12 10,000
Joliet .....	504-54-30	24 9,200
LaSalle .....	530-56-31	12 10,000
Marquette .....	420-52-28	24 7,000
Wm. G. Mather .....	592-62-32	24 12,200
Michigan .....	530-56-31	12 10,000
Munising .....	380-50-28	24 6,300
	J. M. Campbell .....	Chas. Hanlon
	W. T. Mooney .....	J. F. Gordon
	J. G. Olsen.....	Matt. Kuntz
	F. P. Bamford .....	F. Sheppard
	D. J. Hyslop .....	M. Thomson
	H. Wendorf .....	A. J. Cameron
	C. N. Bedell .....	P. J. O'Rourke
	Geo. Russell .....	Stan. Kouchnerkovich
	C. A. Anderson .....	Wm. Furey
	M. J. Brown.....	Chas. Modjeski
	R. H. Edgerton.....	Steve Kouchnerkovich

539

				<b>Captain</b>	<b>Chief Engineer</b>
Negaunee	380-52-28	24	6,200	Jas. Doud	Wm. Cooper
Pioneer	504-54-31	12	9,200	R. E. Hayward	A. E. Telliard
Pontiac	580-60-32	12	11,700	H. A. Murphy	P. J. Stipek
J. H. Sheadle	513-60-31	12	10,300	A. J. Rathbun	S. R. Shipman
Fontana Steamship Co. (Owner)					
Colonel	356-50-29	24	5,700	H. J. Tucker	Erwin Ahrens
Yosemite	356-50-28	24	5,700	F. A. Brytz	John Volanski
Presque Isle Transportation Co. (Owner)					
Angeline	414-50-28	24	6,800	D. F. Jackson	Wm. Riordan
Presque Isle	406-50-28	24	6,500	F. J. Riedy	R. Douglas
Peter White	504-54-30	12	9,200	W. F. Amsbary	Joe Rose
Schneider Transportation Co. (Owner)					
Cletus Schneider	360-50-28	24	5,900	J. McDermid	Joe Volanski
Pam Schneider	360-50-28	24	5,900	C. R. Gallagher	Carl Simmons
Dolores Steamship Co. (Owner)					
W. M. Connelly	346-48	24	5,300	E. J. Scott	Al Ahrens

**46 Cleveland Tankers, Inc., Standard Bldg., Cleveland (Operator)**  
Allied Oil Transport Co., Inc. (Owner)

Comet				F. H. Robbins	William Klaas
Crudoil				J. B. Oliver	Roy Taylor
General Markham				L. U. Picard	Calvin Radike
Mercury (m.v.)				R. Robbins	B. H. Carley
Zephyr (m.v.)				M. B. Shambleau	E. LaMoria
Cleveco (barge)				John Swanson	Gordon Faucher

**Captain** **Chief Engineer**

<b>47 *Clow &amp; Nicholson Transportation Co., Duluth (Owner and Operator)</b>	
Montauk	B. J. Roberts

**48 Coal Carriers Corp. Ltd., 12 King St. East, Brockville, Ont.**  
(Owner and Operator)

	W. B. Reynolds, Managing Director
Coalfax	R. A. Wright
	Colonial Steamships Ltd. (See Fleet No. 200)
	Columbia Transportation Co. (See Fleet No. 170)

**49 Connelly Bros., 165 Ohio St., Buffalo (Owner)**

Connelly Bros. No. 1 (tug)	James N. Connelly
----------------------------	-------------------

**50 Consolidated Dredging Ltd., 900 Victoria Bldg., Ottawa, Ont.**  
(Owner and Operator)

Appointments not made	
Thomas Fisher (tug)	
Minnie (tug)	
J. D. Morrison (tug)	
Roger M. (tug)	
E. C. Whalen (tug)	

**Consolidated Steamship Co. (See Fleet No. 214)**

**51 Consolidated Water Power & Paper Co., Ashland Div., Port Arthur, Ont.**  
(Operator)

	Consolidated Water Power & Paper Co., Wisconsin Rapids, Wis. (Owner)
Butterfield (tug)	Thomas Mackie
(See also Fleet No. 162)	Dave Fredericks



	Captain	Chief Engineer
52	<b>(Constans-Duluth Marine Co., Duluth (Owner and Operator)</b> N. M. Constans, President	
Simon Clark (tug) .....	Emil Gustafson .....	
Constans (tug) .....		
Esther (tug) .....		
53	<b>Construction Aggregates Co., 33 No. La Salle St., Chicago</b> (Owner and Operator)	
Robt. E. Johnston (tug) .....	William Dawes .....	Robert Purcell
Willard L. (tug) .....	C. Purduin .....	Ed Walsh
	Midwest Vessel Corp., Cleveland (Owner)	
Sandcraft .....	John Gusland .....	A. Wirth
Sandmaster (m. v.) .....	Alf. Jonassen .....	R. W. Miller
	<b>Continental Steamship Co. (See Fleet No. 214)</b> <b>Copper Steamship Co. (See Fleet No. 22)</b>	
54	<b>Cox, Charles W., Ltd., Port Arthur, Canada</b>	
Bayfield (tug) .....	no appointments	
Omdego (tug) .....	no appointments	
55	<b>Crosby &amp; Co., Inc., E. S., Marine Trust Bldg., Buffalo (Managing Agents)</b> St. Lawrence Steamships, Ltd. (Owner)	
Algonquins .....	Clarence Crompton .....	Roy Milligan
Cheyenne .....	Joseph K. Corson .....	Fred Sleep
Sioux .....	A. E. DeMill .....	Robert A. McEwen

	Captain	Chief Engineer
56	<b>Crystal Beach Transit Co. Inc., Foot of Commercial St., Buffalo</b> (Owner and Operator) George C. Hall, President	
Canadiana (passenger) .....	William Malloy .....	James Linton
57	<b>Cullnan &amp; Walsh, 1909 Newport Ave., Chicago (Owner and Operator)</b> P. J. Cullnan, Port Captain	
Fred A. Britten (tug) .....	P. J. Cullnan .....	John Hendrixson
Josephine (tug) .....	P. W. Walsh .....	Robert Cullnan
	<b>Cyclo Brave Ltd. (See Fleet No. 142)</b> <b>Cyclo Chief Ltd. (See Fleet No. 142)</b> <b>Cyclo Warrior Ltd. (See Fleet No. 142)</b> <b>Dalhousie Navigation Co., C.N.R. (See Fleet No. 163)</b>	
58	<b>Daryaw, Capt. Henry, 30 Rideau St., Kingston, Ont. (Owner and Operator)</b>	
Henry C. Daryaw .....	Robert Siddell .....	Benoit Garrah
M. Sicken .....	not in commission	
59	<b>Davidson, James E., Foot of Randolph St., Bay City, Mich. (Operator)</b> Salzburg Transportation Co. (Owner)	
Gramplan (schooner) .....	not in commission	
60	<b>Davie Transportation Co., Ltd., Lauzon, Levis, Que.</b>	
A C D (m.v.) .....	L. Richard .....	Mr. Simard
G D D (m.v.) .....	Ars. St. Pierre .....	Edward Walsh
G T D .....	H. Houde .....	Graham Burrill

	<b>Captain</b>	<b>Chief Engineer</b>
61	<b>Detroit, City of, Fire Department, 3434 Russell St., Detroit</b> <b>(Owner and Operator)</b> Edward C. Rumsey, Port Engineer	
John Kendall (fire tug) .....	Gilbert Townsend .....	Lloyd Bargy John McIntosh .....
		Percy Chamberlin

62	<b>Detroit &amp; Cleveland Navigation Co., Wayne St., Detroit (Operator)</b> James T. McMillan, President Detroit & Cleveland Navigation Co. (Owner) (The following six are combination passenger and freight vessels)	
City of Cleveland III .....	L. C. Mantel .....	Albert Murphy
City of Detroit III .....	Wm. McDonald .....	Otto Kuck
Greater Buffalo .....	L. C. De Nike .....	M. E. Sickelsteel
Greater Detroit .....	J. A. Hyatt .....	David Wilson
Eastern States .....	Donald MacRae .....	W. H. Traxler
Western States .....	R. J. Kiessling .....	J. L. Nattress
	Detroit & Cleveland Steamship Co. (Owner)	
Wm. F. Fitch .....	346-48-28 .....	Elon A. Cahours .....
		J. H. Meno
	T. J. McCarthy Steamship Co. (Owner)	
George W. Mead .....	387-50-29 .....	A. J. Chickonoski .....
		Herbert Kline
	Automotive Trades Steamship Co. (Owner)	
George H. Ingalls .....	430-50-29 .....	T. R. Miller .....
Morris S. Tremaine .....	430-50-29 .....	Jas. A. Patterson .....
		John Koyen John D. Bowe

	<b>Captain</b>	<b>Chief Engineer</b>
63	<b>Detroit &amp; Georgian Bay Navigation Co. Ltd.</b> <b>Foot of Woodward Avenue, Detroit (Operator)</b> Seaway Lines (Owner)	
Georgian (passenger) .....	Ernest Long .....	T. Dennison
Virginia (passenger) .....	not in commission	
64	<b>Detroit-St. Clair Navigation Co., 1435 Franklin St., Detroit</b> <b>(Owner and Operator)</b>	
City of Hancock .....	Victor Brown .....	
65	<b>Detroit Tug Line, 8145 Medina St., Detroit (Owner and Operator)</b> R. G. Candler, Manager	
B. E. West (tug) .....	B. E. West .....	Paul Gagne
66	<b>Diamond Steamship Co. Ltd., The, 1322 Third Ave., E., Owen Sound, Ont.</b> <b>(Owner and Operator)</b> George Hindman, President	
George Hindman .....	Charles Randle Jr. ....	Charles Randle Sr.
	Dolores Steamship Co. (See Fleet No. 45)	
67	<b>Dominion Tankers Ltd., Victory Bldg., Toronto, Ont. (Operator)</b> J. H. Solery, Manager	
Peter G. Campbell (m.v.) .....	J. M. Purdy .....	S. Fratson
John A. McDougald .....	S. G. Williamson .....	W. J. Wells

	Captain	Chief Engineer
<b>68 Dominion Transportation Co. Ltd., Owen Sound, Ont. (Owner and Operator)</b> Ivor Wagner, General Manager		
Caribou .....	A. A. Batten .....	J. Glover
Manitou .....	R. Morrison .....	W. Morrison
(Operating joint sailings with Owen Sound Transportation Co. Ltd. See Fleet No. 173)		

<b>69 Driftwood Lands &amp; Timber Ltd., 510 Queen St., East, Sault Ste. Marie, Ont. (Owner and Operator)</b> George Hindman, Port Captain		
Delkote (barge) .....	George Henderson .....	Wm. Gilbert
Mitschfibre (barge) .....	John McKay .....	George Webster
Sulphite (tug) .....	Charles Lynn .....	Wm. Lumley
		Wm. Dickson
Swederope (barge) .....	Percy Steep .....	Wm. Baker

<b>70 Duluth, Missabe &amp; Iron Range Railway Co., Duluth (Owner and Operator)</b>		
Edna G. (tug) .....	H. F. Brower .....	Fabien Poulin
	H. Johnson .....	G. DaMour
	J. Pinney .....	J. LeClair
<b>Duluth Steamship Co. (See Fleet No. 214)</b>		

<b>71 Duluth-Superior Dredging Co., Duluth (Owner and Operator)</b>		
Gladiator (tug) .....	Einer Miller .....	Archie Scott
Warrior (tug) .....		

	Captain	Chief Engineer
<b>72 Dunbar &amp; Sullivan Dredging Co., 2312 Buhl Bldg., Detroit (Owner and Operator)</b>		
R. H. Goode (tug) .....	Ed. Bebeau .....	Charles Anderson
Wm. R. Pantou (tug) .....		
Sachem (tug) .....	J. H. McLean .....	James Bainbridge
Shaughraun (tug) .....	F. Bertrand .....	Ed. Thrombley
Shaun Rhue (tug) .....		Wm. Shewfelt
<b>The Eastern Steamship Co. (See Fleet No. 100)</b>		
<b>Ecorse Transit Co. (See Fleet No. 164)</b>		

<b>73 *Eldridge &amp; Robinson, Auburn, N. Y. (Owner and Operator)</b>		
Empire (diesel tug) .....	Roy Carter .....	Warren Smith

<b>74 Emery, W. L., Foot of Mt. Elliott Ave., Detroit (Owner and Operator)</b> W. C. Schippert, Manager		
John R. Emery .....	Delos Laffrey .....	Leon Bourlier

<b>75 England Towing Co., Duluth (Owner and Operator)</b> F. E. Gregoire, Manager		
Adele (barge) .....	M. L. Hotvedth	
A. W. Colton (tug) .....	N. F. Thompson .....	Jack Hanson
Columbia (tug) .....	E. D. Moe .....	Simon Becker
Faith (barge) .....	David Collette	
Frank Neston (tug) .....	F. E. Gregoire .....	Clarence Chappe

	<b>Captain</b>	<b>Chief Engineer</b>
<b>76</b>	<b>Erie Isles Ferry Co., Put-in-Bay, O. (Owner and Operator)</b>	
	Capt. A. J. Stoll, Manager	
Erie Isles .....	A. J. Stoll .....	Oscar Bertch

<b>77</b>	<b>Erie &amp; St. Lawrence Corp., 19 Rector St., New York (Owner and Operator)</b>	
	Julius H. Barnes, President	
Andrew M. Barnes (m.v.) .....	Harry E. Freeman .....	Henry Mikkelsen
Richard J. Barnes (m.v.) .....	Peter Drawneek .....	Charles E. Hansen
Julius H. Barnes (m.v.) .....		
Alden Barnes Fiertz (m.v.) .....	Fred Waldman .....	Elmer Birdsall
Robert Barnes Fiertz (m.v.) .....	Alex J. Prince .....	M. Mattson

<b>78</b>	<b>Erie Sand &amp; Gravel Co., foot of Sassafras St., Erie, Pa.</b>	
	(Owner and Operator)	
	J. S. St. John, General Manager and Superintendent	
Erie .....	not in commission	
F. C. Osborn .....	Sherman Barnard .....	George Bacon
Jos. S. Scobell .....	David Flemming .....	A. Roberts

<b>79</b>	<b>Federal Motorship Corp., 1602 Marine Trust Bldg., Buffalo</b>	
	(Owner and Operator)	
Badger State (m.v.) .....	Edward D. Starkey .....	Alexander Trocme
Buckeye State (m.v.) .....	William H. McQuivey .....	B. D. Tarr
Empire State (m.v.) .....	William Lansing .....	Wm. Post

	<b>Captain</b>	<b>Chief Engineer</b>
<b>80</b>	<b>Fitz Simons &amp; Connell Dredge &amp; Dock Co., 10 So. La Salle St., Chicago</b>	
	(Owner and Operator)	
	John J. Roche, General Superintendent	
F. H. Camphausen (diesel tug) .....	Archie B. Peterson	
Charles J. Connell (tug) .....	Olaf Hendriksen .....	John J. Lyons
Frances M. Connell (diesel tug) .....	Lester Brutszer	
P. G. Connell, Jr. (diesel tug) .....	Edward J. Allie	
E. James Fucik (tug) .....	John F. Murphy .....	Alexander Gallagher
John T. Lillis (diesel tug) .....	Albert F. Nolan .....	Fred Knutsen
Nassau (sand boat) .....	Carl G. Larson .....	Jerome B. Warner
John J. Roche .....	Joseph Neumann .....	George Johnson
	Fontana Steamship Co. (See Fleet No. 45)	

<b>81</b>	<b>Foote Transit Co. Ltd., 68 King St., East, Toronto, Ont. (Operator)</b>	
	Capt. J. B. Foote (Owner)	
F. V. Massey .....	Frank P. McCarthy .....	E. Carpenter

<b>82</b>	<b>Ford Motor Co., Rouge Plant, Dearborn, Mich. (Owner and Operator)</b>	
	Capt. O. A. Johnson, Marine Superintendent	
Benson Ford (m.v.) . 586-62-32 24 11,750	A. Pedersen .....	E. Burkey
Henry Ford II (m.v.) 592-62-32 24 12,000	J. J. Pearce .....	A. S. Ingram
Barlow (tug)	D. D. Brown .....	L. Crandall
Barrallton (tug)	L. Beattie	
Buttercup (tug)	S. Fagerstrom .....	A. Stanton
Humrick (tug)	E. Bolia .....	L. Horton

No appointments made for barges Lake Allen, Lake Crystal, Lake Farge, Lake

Folcroft, Lake Freeland, Lake Frugality, Lake Frumet, Lake Hemlock, Lake Inaha, Lake Louise, Lake Pleasant, and Lake Sapor.

**Captain**

**Chief Engineer**

New York barge canal service

Chester .....	S. Inch .....	J. Hidden
Edgewater .....	B. Olsen .....	G. Peterson
Green Island (m.v.) .....	O. Meling .....	S. B. Gage
Norfolk (m.v.) .....	R. Cumming .....	H. Culp

**Franklin Steamship Corp. (See Fleet No. 100)**

83	<b>Garriock, Wm., Port Arthur, Ont. (Owner and Operator)</b>	
Glen G. ....	William Garriock .....	Thos. Pollard

84 **Gartland Steamship Co., Terminal Tower Bldg., Cleveland (Operator)**  
Gartland Steamship Co., Wilmington, Del. (Owner)

Back Bay .....	Norman Purser .....	James McCartin
Bennington .....	Albert LaBlanc .....	John Rosenberg
Brockton .....	Andrew Andresen .....	Armour Wiegert
W. E. Fitzgerald .....	W. S. Macqueen .....	Ray Langer
Sullivan Bros. ....	Walter Anderson .....	Fred Harmon
Wm. H. Wolf .....	Elmer Weborg .....	John Thomas

85 **Georgian Bay Tourist Co. of Midland Ltd., Midland, Ont. (Owner and Operator)**

City of Dover .....	H. Martin .....	A. Moreau
Midland City (m.v.) .....	W. Martin .....	A. Lees
Waterbus .....	D. McGrattan .....	

70



**Captain**

**Chief Engineer**

86	<b>Gilbert, John H., 920 First St., Sandusky, O. (Owner and Operator)</b>	
Tourist (diesel tug) .....		John Gilbert

87	<b>Gillen, Edward E., Towing Co., 626 East Wisconsin Ave., Milwaukee (Owner and Operator)</b>	
Ernest E. Beauvais (tug) .....	John Lenz .....	Henry Marth
Edward E. Gillen (tug) .....	A. Jacobson .....	
S. C. Peters (tug) .....		

**Globe Steamship Corp. (See Fleet No. 214)**

88 **Grand Trunk Milwaukee Car Ferry Co., 1825 S. Allis St., Milwaukee (Owner and Operator)**  
R. M. Bloecker, Supt. of Lake Michigan Car Ferries  
(All are car ferries)

City of Grand Haven .....	no appointments	
City of Grand Rapids .....	James G. Thorpe .....	Joseph Shunteck
City of Milwaukee .....	Roland Martin .....	Edward E. Luke
Madison .....	Ottmar Jahnke .....	James MacKenzie

89	<b>Gravel Products Co., 99 Miami St., Buffalo (Owner and Operator)</b>	
Niagara .....	Thos. N. Hefferman .....	Joseph Raines

90	<b>Great Lakes Dredge &amp; Dock Co., 122 S. Michigan Ave., Chicago (Owner and Operator)</b>	
	Paul W. Dickinson, General Manager	
	The following are tugs:	
James H. Cassidy .....	R. Church .....	H. Dwyer

71

John F. Cushing .....  
 E. C. Dempsey .....  
 P. W. Dickinson .....  
 William P. Feeley .....  
 Andrew H. Green .....  
 Martin G. Hausler, Jr. ....  
 Hudson .....  
 William H. Kinch .....  
 William A. Lydon .....  
 John A. McCormick .....  
 Harry McGinnis .....  
 Dr. Walter G. McGuire .....  
 Marion .....  
 Gen. E. M. Markham .....  
 Martha C .....  
 Mary C .....  
 Oscar F. Mayer .....  
 Jas. J. Murray .....  
 L. P. Smith .....  
 Harry B. Williams .....  
 John R. Williams .....

**Captain** .....  
 M. J. Bishop .....  
 N. Merrill .....  
 William Mattick .....  
 R. Bishop .....  
 J. Eskeland .....  
 William Angell .....  
 W. Ward .....  
 T. Farrell .....  
 A. V. Ellis .....  
 G. Horgen .....  
 A. Armstrong .....  
 R. Hughes .....  
 T. Thompson .....  
 R. Jeffrey .....  
 R. Laurie .....  
 T. Stengel .....  
 W. Campbell .....  
 T. Farrell .....  
 G. Murphy .....  
 W. Jantze .....  
 William Ulrich .....

**Chief Engineer** .....  
 M. Welch .....  
 W. Whaley .....  
 F. LaForge .....  
 P. Meyers .....  
 C. Runyan .....  
 Michael Cross .....  
 E. Johnson .....  
 J. Dickson .....  
 A. Smith .....  
 F. Dumary .....  
 J. Hilton .....  
 W. Goode .....  
 J. Casey .....  
 H. Hanger .....  
 O. Nordquist .....  
 A. Stengel .....  
 J. West .....  
 H. Sprague .....  
 J. Williams .....  
 J. LaCoy .....

The following are dredges:

Crest .....  
 Illinois .....  
 Indiana .....

L. E. Bouchard .....  
 F. Crosson .....  
 N. Paulin .....

C. P. Sheltman .....  
 J. Unsinn .....  
 F. Brewer .....

Junior .....  
 Majestic .....  
 Michigan .....  
 Mogul .....  
 New Jersey .....  
 New York .....  
 Ohio .....  
 Scout .....  
 Toledo .....  
 Turbo .....  
 War Horse .....  
 B-7 .....  
 M-9 .....  
 No. 54 .....  
 No. 55 .....  
 No. 56 .....

**Captain** .....  
 J. Canan .....  
 J. Frea .....  
 P. Green .....  
 W. Parrish .....  
 M. Roberts .....  
 E. Ludvigson .....  
 F. A. Crosson .....

**Chief Engineer** .....  
 D. Sheehan .....  
 F. Schuyler .....  
 Fred Dummer .....  
 J. Hoynosh .....  
 S. Smith .....  
 G. Harvey .....  
 S. Miller .....

A. Montgomery .....  
 A. Richard .....  
 O. Kutzner .....  
 L. Cowan .....  
 A. Munson .....  
 J. Kirchmaier .....  
 J. Hoehnan .....  
 V. Jones .....

D. Montgomery .....  
 C. Peterson .....  
 M. Welsh .....  
 J. Prout .....  
 J. Pellow .....  
 S. Lund .....  
 H. Marquette .....  
 H. Krieg .....

91 **Great Lakes Engineering Works, River Rouge (Detroit) Mich.**  
 Ecorse (tug) ..... Paul Kohn ..... William Berridge

92 **Great Lakes Steamship Co. Inc., 1542 Rockefeller Bldg., Cleveland (Owner and Operator)**  
 J. Burton Ayers, Manager: Henry Cowan, Fleet Engineer  
 John B. Cowle ..... 525-58-31 12 10,400 E. E. Carleton ..... Hugh Gangwish  
 Denmark ..... 440-56-28 12 8,300 Louis J. Potvin ..... Fred Antons  
 John Dunn Jr. .... 504-58-30 24 9,800 Howard Geel ..... H. Otis Smith

72

73

J. F. Durston	432-52-28	12	7,300
Finland	549-56-31	24	10,400
Chas. Hubbard	438-52-28	24	7,600
Geo. P. Leonard	380-50-28	24	6,300
A. E. Nettleton	525-55-31	12	9,800
Norway	504-58-30	12	9,800
Wm. Nottingham	380-50-28	24	6,300
B. Lyman Smith	380-50-28	24	6,300
Hurlbut W. Smith	414-50-28	24	6,800
Lyman C. Smith	525-55-31	12	9,800
Monroe C. Smith	380-50-28	24	6,300
Wilbert L. Smith	380-50-28	24	6,300
Sweden	414-50-28	24	6,800
Smith Thompson	438-52-28	24	7,400
Horace S. Wilkinson	580-60-32	12	11,500

**Captain**

**Chief Engineer**

Edward Jacobs	Ernest Potthier
H. L. Stewart	Ernest Kurz
Bradley J. Shackett	Fred Showar
Fred Tange	Wm. Stewart
Chas. W. Caughell	J. R. Goodrich
Chas. Gonyaw	John Brunner
Chas. A. Solfrank	Brian Seeley
Lothar Haugneland	E. J. McSweeney
R. J. Grekowitz	W. E. Gallagher
Geo. R. Manuel	James C. Browne
Daniel O'Boyle	James J. Nolan
Melvin Edwards	Edward Schmidt
Wm. Morton	W. A. Goerss
Robert Goodwin	Walter Hanssen
F. B. Parsons	Ben Ray

93

**Great Lakes Towing Co., 1800 Terminal Tower, Cleveland  
(Owner and Operator)**

The company deems it impractical to announce appointments for the reason they are largely made by local managers at various ports and tugs are double and triple-crewed. The company's fleet includes:

Tugs Alabama, Alpena, America, Arizona, Arkansas, Ashtabula, California, Colorado, Connecticut, Delaware, Dunkirk, Favorite, Florida, Frank W., Georgia, Idaho, Illinois, Indiana, Iowa, Kansas, Kentucky, Lorain, Louisiana, Maine, Maryland, Massachusetts, Michigan, Minnesota, Mississippi, Missouri, Montana, Nebraska, Ne-

**Captain**

**Chief Engineer**

vada, New Hampshire, New Jersey, New Mexico, New York, North Dakota, Ohio, Oklahoma, Oregon, Pennsylvania, Racine, R. P. Reidenbach, Rhode Island, L. C. Sabin, Sandusky, Tennessee, Texas, Toledo, Utah, Vermont, Virginia, Washington, Waukegan, Wisconsin, Wyoming, Yale.

Lighters T. F. Newman, Pontoon, Reliance, Relief, Rescue, Resolute.

94

**Great Lakes Transport Corp., 3112 Book Tower, Detroit  
(Owner and Operator)**

Fueloil (barge)	John Oisland	T. R. LeRoy
Mexoil	Nelson Tonyaw	Shirley Thompson
Panoll	Pure Oil Steamship Co. (Owner)	
L. S. Wescoat	C. V. Nissen	John Mathews

95

**Great Lakes Transit Corp., 223 Erie St., Buffalo, N. Y.  
F. P. Brady, General Agent**

W. W. Atterbury	Alex McKenzie	Chas Wilson
W. J. Conners	W. S. MacDonald	J. Graham
P. E. Crowley	J. McGillivray	A. B. McArthur
J. M. Davis	P. Ebisch	C. Wesley
George D. Dixon	not in commission	
Duluth	A. J. McPherson	G. Broad
C. T. Jaffray	A. W. Hayden	W. Shaw
Fred W. Sargent	not in commission	
H. A. Scandrett	J. Donahue	J. E. Eckert

	Captain	Chief Engineer
Alfred H. Smith .....	Geo. J. Healy .....	A. Liston
Utica .....	L. Farrelly .....	
Daniel Willard .....	not in commission	

**96 Gulf & Lake Navigation Co. Ltd., 417 St. Peter St., Montreal, Que.**  
(Owner and Operator)  
R. A. Carter, General Manager

Birchton .....	C. A. Deschenes .....	F. Gould
Cedarton .....	W. L. Mahaney .....	R. James
Oakton .....	A. E. Brown .....	J. H. Robinson

**97 Gulf Oil Corp., Marine Dept., 17 Battery Pl., New York**  
(Owner and Operator)  
Willard F. Jones, General Manager

Paratex .....	H. Solberg .....	L. Spring
Regent .....	J. F. Erbse .....	L. P. Benjamin

**98 Hall Corp. of Canada, 637 Common St., Montreal, Que.**  
(Owner and Operator)  
A. Hutchinson, Manager

Coniscliffe Hall .....	E. Groulx .....	J. Boutin
George L. Eaton .....	A. Barrett .....	G. B. Fleming
Meadcliffe Hall .....	R. Sinclair .....	P. Bolduc
Mont Louis .....	T. Marchand .....	A. Baribeau
John H. Price .....	T. L. Davis .....	W. Covey
Walter B. Reynolds .....	Geo. Dorais .....	J. L. Dunn

76

	Captain	Chief Engineer
--	---------	----------------

Lucius W. Robinson .....	M. H. Robson .....	A. Bibeau
Rockcliffe Hall .....	W. M. Bowen .....	W. H. Lamoureux

**99 Hammermill Paper Co., Port Arthur, Ont. (Operator)**

Wahnapiatae .....	Wm. Garrick .....	David Moore
-------------------	-------------------	-------------

**100 Hanna, M. A. Co., The, Agents, Leader Bldg., Cleveland (Operator)**  
Franklin Steamship Corp. (Owner)

Edward J. Berwind .....	586-62-32	24	12,400	George Levis .....	S. E. Atkinson
Emory L. Ford .....	580-60-32	12	12,200	F. A. Colson .....	F. J. Auttersen
Fred G. Hartwell .....	596-64-33	12	13,400	M. M. Stewart .....	A. M. Robertson
Joseph Wood .....	504-54-30	12	9,300	The Eastern Steamship Co. (Owner)	
La Belle .....	504-54-30	12	9,300	R. H. Brown .....	J. G. Nelson
Carle C. Conway .....	532-56-31	12	10,200	The La Belle Steamship Co. (Owner)	
George R. Fink .....	532-56-31	12	10,200	R. R. Redecker .....	A. C. Barnes
A. E. Heekin .....	525-58-31	12	10,500	National Steel Corp. (Owner)	
L. W. Hill .....	525-58-31	12	10,500	N. F. Peltier .....	J. Watt
Edmund W. Mudge .....	504-54-30	12	9,600	R. F. Leng .....	H. A. Clark
David M. Weir .....	532-56-31	12	10,200	G. C. Hibbard .....	A. Farquhar
Ernest T. Weir .....	580-60-32	12	11,800	W. R. Maitland .....	R. M. Akerley
J. C. Williams .....	525-55-31	12	9,800	C. T. Gallagher .....	C. F. Hoffman
W. D. Crawford .....	504-54-31	24	9,500	W. J. Lane .....	W. R. Johnson
				A. H. Hartman .....	J. D. Summerville
				E. F. Rice .....	E. W. Scott
				The Virginia Steamship Co. (Owner)	
				S. Sorensen .....	Edw. Pelly

77



	Captain	Chief Engineer
101 Pelee .....	Harris, Ralph, Pelee Island, Ont. J. N. Sheats	
102 Harrison, John, & Sons Co., Ltd., 1417 Second Ave., West, Owen Sound, Ont. (Owner and Operator)	Roy McGregor Roy Graham	James Nicoll
Michigan (lighter) .....		
Northern (tug) .....		
103 Hoskins Coal & Dock Corp., 10 So. LaSalle St., Chicago, Ill. (Owner and Operator) J. C. Hoskins, President	Fred J. Hintz Jr.	
Commerce .....		
Industry .....		
104 Huntsville Lake of Bays & Lake Simcoe Nav. Co. Ltd., Huntsville, Ont. (Owner and Operator) (These steamers are operated only in inland lakes, Muskoka district)		
Algonquin .....	Robt. J. Parsons	John T. Smith
Bigwin .....	W. H. Elder	Archy Ennest
Iroquois .....	A. E. Pink	W. G. Murray
Mohawk Belle .....	no appointments made	
Ramona .....	no appointments made	
105 Huron Transportation Co., 1325 Ford Bldg., Detroit (Owner and Operator) H. R. Schemm, Port Captain		
John W. Boardman..... 334-55-28 5,600	Thompson Campbell.....	Edward Walker
S. T. Crapo .....	Donald McLachlan.....	Walter Kammer
Samuel Mitchell .....	293-40-25 2,700	not in commission



	Captain	Chief Engineer
106 Hutchinson & Co., 1508 Rockefeller Bldg., Cleveland (Operator) Inland Steel Co. (Owner); Anton Rud, Fleet Engineer		
Joseph Block..... 549-56-31 12 10,300	H. H. Kizer .....	A. A. Wolf
L. E. Block..... 596-64-33 24 13,400	A. A. Clarke .....	W. B. Rowe
Philip D. Block..... 580-60-32 24 11,800	F. A. Tomlin .....	F. N. Lang
N. F. Leopold..... 532-56-31 12 10,100	Geo. Fisher .....	Alan Seelye
	Pioneer Steamship Co. (Owner)	
Amazon .....	376-46-26 24 5,600	Martin Olson .....
J. S. Ashley .....	504-54-30	L. W. Schroeder
A. A. Augustus .....	504-54-30 12 9,500	T. A. Johnson.....
Frank Billings .....	444-56-30 12 8,400	Howard Benham
W. D. Calverley Jr..... 380-50-28 12 6,300	J. M. Johnson.....	Albert Holl
S. B. Coolidge .....	376-48-26 24 5,600	H. P. Murphy.....
James E. Ferris .....	444-56-30 12 8,400	John Paytosh
Donald B. Gillies .....	525-55-31 12 10,100	Ambrose Knudson.....
C. L. Hutchinson..... 580-58-32 12 11,250	James H. Smith.....	Carl McGeehan
W. H. McGeen..... 480-56-30 12 9,500	John A. Logan.....	Charles Cawthra.....
Price McKinney..... 432-54-28 24 7,300	W. D. Weborg.....	Willard Pallas
John S. Manuel..... 444-56-30 12 8,400	E. P. Maxim .....	Donald Swartz
Martin Mullen..... 416-50-28 12 6,800	Wm. Schlegel .....	A. J. Munroe.....
Wm. A. Paine..... 480-52-30 12 8,500	L. W. Smith .....	John Linden
John Stanton..... 504-54-30 12 9,500	H. A. Johnson.....	James H. Smith.....
J. J. Sullivan..... 532-56-31 12 10,300	W. D. Weborg.....	Geo. Schroder
David P. Thompson..... 554-58-32 12 11,000	H. A. Johnson.....	R. D. Burt
G. A. Tomlinson..... 504-54-30 12 9,500	W. D. Weborg.....	Andrew Tenwick
James P. Walsh..... 480-52-30 12 8,400	E. P. Maxim .....	E. J. Fournier
		Wm. Schlegel .....
		Paul Barth
		L. W. Smith .....
		Peter B. Johnson
		H. W. Frilay.....
		Clarence Shunnesson
		John A. Logan.....
		W. L. Smith
		Sevren O. Nelssen.....
		Alex Kronberg
		H. J. Scheible.....
		H. T. Landers
		Claire Duclon.....
		Kenneth Peterman

**Captain**

**Chief Engineer**

**107 Illinois Ship & Dredge Co., 222 West Adams St., Chicago**  
(Owner and Operator)

Brazil (hyd. sand boat) .....

**108 Imperial Oil Shipping Co., Ltd., Imperial Oil Bldg., Toronto, 2, Ont.**  
(Owner and Operator)  
H. J. Rahlves, Manager

Acadialite .....	J. E. Jenkins .....	George Vollick
Iocolite .....	F. C. Smith .....	F. Pringle
Iocoma .....	J. Hefford .....	S. H. Phillips
Imperoyal .....	H. L. Thomas .....	R. Knox
Ottawalite .....	H. McLellan .....	H. Lazarus
Rideaulite .....	W. Matthews .....	J. Maxwell
Royalite .....	J. Vickers .....	S. Slauenwhite
Sarnolite .....	E. A. Davies .....	A. Smith
Simcolite .....	D. T. Milne .....	W. Sinclair
Talaralite .....	C. G. Sloane .....	W. Wambeck
Windsolite .....	C. R. Dyon .....	W. R. Oakes

**India Navigation Co. (See Fleet No. 22)**

**109 Inland Lines Ltd., 635 Common St., Montreal, Que. (Owner and Operator)**

Damia .....	K. LaRush .....	Frank Collier
Saracen .....	A. C. Clarry .....	J. E. Drake

**Inland Steel Co. (See Fleet No. 106)**

**Captain**

**Chief Engineer**

**Inter Ocean Steamship Co. (See Fleet No. 214)**  
**The Interlake Steamship Co. (See Fleet No. 178)**

**110 International Harvester Co., 180 N. Michigan Ave., Chicago**  
(Owner and Operator)

H. F. Hughes, Assistant Manager			
The Harvester.....	525-58-31	12 10,500	J. R. Boswell.....J. L. Young
The International.....	586-60-32	12 11,800	J. B. Routhier.....E. T. Everitt

**111 International Transit Co., The, 527 Queen St., East, Sault Ste. Marie, Ont.**  
(Owner and Operator)

P. Martin, Port Captain			
Agoming (m.s.) .....		J. B. Rintoul .....	Grant M. Harrison
		Gordon Harrison	

**112 International Waterways Navigation Ltd., 635 Common St., Montreal, Que.**  
(Owner and Operator)

International .....		not in commission
R. A. Campbell, Manager		

**113 Interstate Steamship Co., 815 Rockefeller Bldg., Cleveland**  
(Owner and Operator)

R. W. England, Marine Manager; A. J. Reiner, Lake Traffic Manager			
B. F. Jones .....	530-56-31	24 10,100	L. J. Dufenhorst.....C. H. Cosnett
Willis L. King.....	580-58-32	12 11,400	F. N. Watts .....
James Laughlin.....	530-56-31	24 10,100	A. L. Olsson .....
Thomas Walters.....	580-58-32	12 11,400	M. G. Allen.....James Pearson
			C. L. Irish

02

01

	<b>Captain</b>	<b>Chief Engineer</b>
<b>114</b>	<b>Inter-Provincial Steamship Lines, Ltd., Royal Bank Chambers, Halifax, Nova Scotia</b>	
	F. K. Warren, President	
Moyra .....	Eugene Coates .....	H. L. McLeod
Sonia .....	Norman E. Smith .....	Wm. Harvey
Zenda .....	R. L. Clarke .....	Wm. Harbottle
	Island Transportation Co. (See Fleet No. 117)	

**115 Janin, A., & Co. Ltd., 1460 W. Sherbrooke St., Montreal, Que.  
(Owner and Operator)**

Claire Janin (tug) ..... not in commission

**116 Jupiter Steamship Co., 317 Rockefeller Bldg., Cleveland (Owner and Operator)  
W. C. Secord, Manager**

Jupiter ..... 346-48-28 10 5,000 T. B. Greenway.....H. B. Muhltnr

**117 Keightley, (Miss) E. M., and Joseph Fitzpatrick, St. Ignace, Mich. (Operator)**  
Island Transportation Co. (Owner)

Algomah II ..... William Schepler.....James Sherry

**118 Kelley Island Lime & Transport Co., Sandusky, O. (Owner and Operator)**

Hydro .....

Kelley Island .....

John M. McKerchey .....

Irving Ohlemacher.....Oscar Noak  
J. C. Ingwersen.....S. A. Furst  
Robert Donaldsen.....E. L. Hurlburt

	<b>Captain</b>	<b>Chief Engineer</b>
<b>119</b>	<b>Keystone Transports Ltd., 406 Power Bldg., Montreal, Que. (Owner and Operator)</b>	
	Capt. L. Beaupre, Marine Superintendent	

Keybar .....	W. V. Smith .....	Robt. Garriock
Keybell .....	W. A. Davis .....	James Boak
Keydon .....	E. F. Anderson .....	Geo. W. Clark
Keyholt .....	J. E. MacLeod .....	C. J. Charlesworth
Keymont .....	W. J. H. Brown .....	Maurice Bechervaise
Keyport .....	E. M. Walsh .....	Lars Nordnes
Keystate .....	E. J. Smith .....	David Annand
Keyvive .....	Geo. Brown .....	Geo. Baker
Keywest .....	E. Davidson .....	A. H. Horton
Surewater .....	W. N. Williams .....	S. Heather
Trenora .....	P. V. Mahoney .....	R. J. Ascah
	Kinsman Transit Co. (See Fleet No. 211)	

**120 Kishman Fish Co., Vermillion, O. (Owner and Operator)**

H. B. Kishman (tug) ..... Otto Full

Lester K. (tug) ..... Shirley Lumley

Netpune (tug) ..... Wm. Eberle

**121 Kolbe Fisheries Co., Erie, Pa. (Owner and Operator)**  
M. A. Tucker, Manager  
(All are tugs)

Acipson .....

Charles L. ....

Karl Fratus  
D. J. Regan

	Captain	Chief Engineer
Wm. H. Jackway .....	Merle Jackway	
Martha B. ....	Frank Steele	
Marvet H. ....	Charles Hoskins .....	J. Cranston
Merle J. ....	Clyde Fahlman	
Sea Bird .....	T. J. Welsh .....	J. Nolan
Tommy T. ....	M. Heidt	

The La Belle Steamship Co. (See Fleet No. 100)

122	La Cie de Traverse Valleyfield-Coteau Dulac Ltd., Valleyfield, Que. (Owner and Operator)	
Beauharnois .....	Ernest Lefevre .....	Georges Houde
	Lake Chelan Steamship Corp. (See Fleet No. 16)	
	Lake Erie Coal Co. Ltd. (See Fleet No. 123)	

123	Lake Erie Navigation Co. Ltd., Walkerville, Ont. (Operator)	
	Lake Erie Coal Co. Ltd., Walkerville, Ont. (Owner)	
	L. H. Kent. Chief Marine Engineer, Ludington, Mich.	
Alexander Leslie .....	R. Alexander .....	David Brown

124	Lake Sand Corp., 228 North LaSalle St., Chicago (Owner and Operator)	
Gilbert .....	E. Farley .....	W. Walder

125	Lake Tankers Corp., 20 Exchange Place, New York (Owner and Operator)	
Justine C. Allen (m.v.) .....	E. A. Uhler .....	Nelson Apelskog
Martha E. Allen (m.v.) .....	F. W. Dixon .....	E. A. Stevens

84



	Captain	Chief Engineer
126	Lake Transportation Co., Ltd., 132 N. May St., Fort William, Ont. (Owner and Operator)	
Alfred J. (barge) .....	Ed. Watson .....	Gus Arvelin
Ann L (tug) (nee Walter Wyman) .....	H. Keenan .....	W. Holmes
Blanche H. (barge) .....	A. Lavigne .....	R. Shaw
Ethel J. (barge) .....	N. Stalker .....	S. Haskil'
Florence J. (barge) .....	C. J. Lavigne .....	H. Twiggel
Gotham (tug) .....	D. Smith .....	Jas. McGill
E. E. Johnson (nee John P. Geistman) .....	Jas. Walton .....	H. Charlton
Oscar Lehtinen (tug) (nee Sumac) .....	E. Bursey .....	M. Heis
Marguerite W. (tug) .....	Chas. Whiteside .....	F. MacAulay
Merle H. (barge) .....	J. Agnew .....	A. Sparling
Prudence (tug) .....	E. Kirton .....	Geo. Hill

85

127	Lakes & St. Lawrence Navigation Co. Ltd., Cardinal, Ont. (Owner and Operator)	
	R. S. Browning, Marine Superintendent	
Casco .....	W. J. Mills .....	S. E. Moore

128	LaWay, Capt. E. J., Cheboygan, Mich. (Owner and Operator)	
M. H. Stuart .....	E. J. LaWay	

	Captain	Chief Engineer
<b>129</b> Levis Ferry Co. Ltd., Champlain Market, Quebec (Owner and Operator)	I. L. Roberge, Manager	
Bienville .....	Armand Dumont .....	W. Aubin
Colbert .....	Alphonse Forgues .....	M. Lamothe
Louis Jolliet .....	C. Martel .....	A. Begin
.....	U. Lemieux .....	W. Desrochers
.....	Eugene Fortin .....	J. Bernier

Steamers Cite de Levis and Cite de Quebec used in winter navigation only

**130** Lindsay, E. S., 612 Clairmont St., Port Huron, Mich. (Owner)  
Peerless No. 1 (barge)

**131** Lloyd Tankers Ltd., 80 King St., West, Toronto, Can.  
(Owner and Operator)

Bruce Hudson .....	R. Hindman .....	J. Brodeur
Joan Virginia .....	S. Ahern .....	D. Arbour

**132** The Lorain Coal & Dock Co., Terminal Tower, Cleveland  
(Owner and Operator)  
H. L. Gates, Manager

Lorain (fuel lighter) .....	M. E. Jones .....	N. Smith
.....	.....	C. C. Tillack

**133** Luedtke Engineering Co., Frankfort, Mich. (Owner and Operator)

Karl E. Luedtke (tug) .....	Howard Smith .....	Stanley Lancewicz
-----------------------------	--------------------	-------------------

	Captain	Chief Engineer
<b>134</b> Lyons Construction Co., Whitehall, Mich.	Ira J. Lyons (Owner)	

C. J. Boss (diesel tug) .....	Ira J. Lyons
Fred C. Greiling (tug) .....	
Progress (dredge) .....	
Miss Mud Hen (dredge) .....	
(nee Gold Digger) .....	

**135** Mackinac Transportation Co., St. Ignace, Mich. (Operator)  
Mackinac Transportation Co., Detroit (Owner)  
C. H. Brown, Port Captain

Chief Wawatan (carferry) .....	C. H. Brown .....	L. W. Specht
Sainte Marie (carferry) .....	Alexander Tromblay .....	Harry Cheeseman

Mahoning Steamship Co. (See Fleet No. 14)

**136** Marine Industries Ltd., Sorel, Que. (Owner and Operator)

Baroff (tug) .....	C. Millette .....	H. Paradis
Earl Bess (tug) .....	J. Boily .....	F. Denis
General Brock (dredge) .....	J. Clouston .....	T. Carrie
Bruxelles XXXX (dredge) .....	A. Boucher .....	J. Demers
C. & R. Derrick No. 1 .....		
Cahotte (tug) .....	S. Beaudet .....	P. Blette
Churchill No. 1 (dredge) .....	R. Wilmoth .....	M. Fiset
Derrick & Hoister No. 2 .....		
Deschenaux (tug) .....	E. Larosee .....	E. Boisclair

Dramis (tug) .....  
 Franklin C (tug) .....  
 H.C.M. No. 5 (dredge) .....  
 Hullman (tug) .....  
 John Kennedy (dredge) .....  
 Manseau No. 101 (dredge) .....  
 Manseau No. 2 (derrick) .....  
 Manseau No. 104 (derrick) .....  
 Manseau No. 105 (dredge) .....  
 Manseau No. 107 (dredge) .....  
 George M. McKee (tug) .....  
 Montcalm Derrick No. 1 .....  
 General Montcalm (dredge) .....  
 Capt. T. W. Morrison (tug) .....  
 New Welland (dredge) .....  
 Serieux (tug) .....  
 Patrol No. 4 (tug) .....  
 Ostrea II (tug) .....  
 David Seath (tug) .....  
 Capt. Simard (tug) .....  
 Robert G. Weddell (tug) .....  
 General Wolfe (dredge) .....

**Captain** **Chief Engineer**  
 D. Beaudet ..... O. Mandeville  
 A. Bonin ..... P. Lanciault  
 D. Bergeron .....  
 W. Lavallee ..... J. Laforest  
 P. Paul .....  
 E. Gallant ..... J. Cotnoir  
  
 P. Paul .....  
 J. Paul .....  
 Alp. Bonin ..... A. Poulin  
  
 H. Presley ..... A. Larsen  
 E. Duchesne ..... L. Frechette  
 A. Simoneau ..... G. Begin  
 W. Allison ..... D. Guay  
  
 A. Audet ..... C. Peloquin  
 A. Lemay ..... W. Braconnier  
 J. Mongeau ..... A. Demers  
 J. Cote ..... H. Drolet  
 A. Jacobsen ..... Hugh Bell

**Branch Lines Limited (Owner)**

Cedarbranch .....  
 Maplebranch (tanker) .....

A. Lamothe ..... M. Pelletier  
 W. Carre ..... J. Cournoyer



Oakbranch (tanker) .....  
 Pinebranch .....  
 Willowbranch (tanker) .....

**Captain** **Chief Engineer**  
 D. Charland ..... C. Mondor  
 L. Chapdelaine ..... J. B. Demers  
 L. Blais ..... H. Lemieux

**137 Marine Iron & Shipbuilding Co., Foot of Eleventh Ave., West, Duluth**  
**(Owner and Operator)**

Toby Cahill (tug) ..... Norman Skafte  
 Islay (tug) ..... William McLean ..... A. E. Johnson  
 Swan Larson (tug) ..... David Berg

**138 Marine Transit Co., 131 East Wacker Drive, Chicago**  
**(Owner and Operator)**

American ..... Louis Thorsen ..... Frank Buchler

**139 Matheson, Capt. John S., Southampton, Ont. (Owner and Operator)**

LaPlante (tug) ..... John S. Matheson ..... James Matheson

**140 Matheson, Leland, Southampton, Ont. (Owner and Operator)**

Douglas M. (tug) ..... Donald Matheson ..... George Eby

**141 Matton, John E., & Son, Inc., Waterford, N. Y. (Owner and Operator)**  
 (All are tugs)

John A. Becker ..... John Maloney ..... Robert Folger  
 Matton ..... Eugene Roberts ..... Hazzard Gibbs  
 Matton 10 ..... Austin Huftill ..... Irving Anderson  
 Matton 20 ..... James Clinton ..... Earl Clark  
 Matton 21 ..... Frank Godfrey ..... Joseph LaVallee  
 Ralph E. Matton ..... Henry Roberts ..... William Pengeley

	Captain	Chief Engineer
H. A. Meldrum .....	Urban Fontaine.....	Theodore Kelly
P. C. Ronan .....	George Godfrey .....	Thomas Bell
<b>T. J. McCarthy Steamship Co. (See Fleet No. 62)</b>		

**142 McColl-Frontenac Oil Co., Ltd., Yardley House, Toronto (Operator)**  
 S. S. Cyclo Chief Ltd., Montreal (Owner)

Cyclo-Chief .....	A. H. Foote .....	C. G. Myatt
S. S. Cyclo Warrior Ltd., Montreal (Owner)		
Cyclo-Warrior .....	I. L. Mateer .....	C. G. Carr
S. S. Cyclo Brave Ltd., Montreal (Owner)		
Cyclo-Brave .....	E. L. Pyette .....	J. M. Kettle

**143 McFadden Lumber Co., J. J., Ltd., Blind River, Ont. (Owner and Operator)**  
 Wm. Decota .....

Waubauskene .....	Dougall McLeod
<b>McKellar Steamships Ltd. (See Fleet No. 200)</b>	

**144 McLean & Son, A. B., Brock St. dock, Sault Ste. Marie, Ont. (Owner and Operator)**  
 Capt. R. A. and John McLean, Managers

James J. Baxter Jr. (tug) .....	William Bennett .....	William Biron
Misford (tug) .....	no appointments made	
Nadine (barge) .....	Charles Johnson	
Spragge (tug) .....	no appointments	
Derrick Scow No. 3 .....	A. Biron	
Derrick Scow No. 4 .....	Fleet McLean	

	Captain	Chief Engineer
Dredge L. S. No. 3 .....	Alphy Primeau	
Drill Boat No. 5 .....	Allen McKay	

**145 McQueen, Capt. J. E., Amherstburg, Ont. (Owner and Operator)**

Erie Isle (diesel passenger) .....	J. Penner .....	R. Ferguson
Essex (tug) .....	J. E. McQueen	
Patricia McQueen (diesel tug) .....	A. Macdonald .....	J. Goodchild
Progresso (tug) .....	J. Penner .....	H. Atkinson
Henry Stokes (tug) .....	C. R. Hackett .....	R. Crowder
Handy Boy (lighter) .....	D. Foucher	
Amherst (barge) .....		G. McKenzie
(nee Peter Koenig)		

**146 Meagher, W. J., & Sons, Bay City, Mich. (Owner and Operator)**  
 Wm. McNiel .....

Tipperary (tug) .....	Jos. A. Meagher
Shamrock (dredge) .....	
Falcon (barge) .....	
Marquis Roen (barge) .....	
Pego K (tender) .....	
Freedom (scow) .....	
No. 83 (scow) .....	

**147 Merritt-Chapman & Scott Corp., 515 Marion Bldg., Cleveland (Owner and Operator)**

Clyde (derrick scow) .....	
No. 4 (derrick scow) .....	
William A. Whitney (tug) .....	James Hoben .....
	J. Moorhouse

148 **Michigan Atlantic Corp., 60 E. Forty-second St., New York**  
**(Owner and Operator)**  
 Michigan (m.v.) ..... Oscar Gronwall ..... T. Johnson  
 Captain Chief Engineer

149 **Michigan Limestone & Chemical Co., Rogers City, Mich.**  
**(Owner and Operator)**  
 Central (tug) ..... Frank Horgan ..... A. P. Boehmer  
 Kellers (tug) ..... Arthur Cook ..... Frank Weisnewski  
 Rogers City (tug) ..... E. G. Newhouse ..... Frank Fwelling  
 Russell Lamb ..... Frank Lamp

150 **Michigan State Ferries, St. Ignace, Mich. (Operator)**  
 Michigan State Highway Dept., Lansing, Mich. (Owner)  
 G. D. Kennedy, Commissioner; L. B. Reid, Deputy Commissioner;  
 Capt. Geo. F. Loughin, Superintendent  
 City of Cheboygan ..... Louis Strahan ..... Sim Lowery  
 City of Munising ..... Benjamin Houle ..... Wm. Ney  
 The Straits of Mackinac ..... James Blain ..... George Campbell  
 Pere Marquette No. 17 ..... Andrew Coleman ..... Leo Fogelsonger

151 **Midland Steamship Line, 210 Terminal Tower, Cleveland**  
**(Owner and Operator)**  
 Baird Tewksbury, President; Capt. J. J. Freitas, Manager  
 Hazen Butler ..... 420-52-28 12 7,000 Geo. W. Cole ..... Clarence J. Dickey  
 Michael Gallagher ..... 420-54-28 12 7,400 D. M. Post ..... Alex M. Houston  
 C. O. Jenkins ..... 504-54-31 12 9,300 E. W. May ..... John W. Long  
 J. H. Macoubrey ..... 380-50-28 12 6,400 Harry Miller ..... Joseph F. Talder

W. G. Pollock ..... 420-52-28 12 7,000 Wm. Langell ..... Thomas J. Reilly  
 Edw. N. Saunders Jr. 504-55-30 12 9,500 E. H. Bennett ..... G. W. Kroening  
 Carmi A. Thompson 525-58-31 12 10,500 Richard J. Neville ..... Thomas E. Sheridan  
 Captain Chief Engineer

152 **Mid-West Transportation Co., Bay City, Mich. (Owner and Operator)**  
 Aetna ..... 252-44-19 3,000 Bert Pleyea ..... A. G. Olmstead  
 Midwest Vessel Corp. (See Fleet No. 53)

153 **Milwaukee, City of, Fire Department, Milwaukee**  
 Peter Steinkellner, Chief of Fire Department  
 (All vessels are fireboats)  
 M. F. D. No. 15 ..... Max Etzel ..... George Driscoll  
 M. F. D. No. 29 ..... Harold Ellingsen ..... Paul Knuettel  
 Torrent ..... Olaf C. Gabrielson ..... George Schmitt

154 **Minnesota-Atlantic Transit Co., 275 Fuhrmann Blvd., Buffalo, N. Y. (Operator)**  
 Terminals & Transportation Corp., (Owner)  
 H. T. Hoopes, Buffalo, President; W. A. Young, Detroit, Vice President—Operations  
 H. M. Bouchard, General Superintendent, Buffalo  
 Ace ..... Herman Nielsen ..... Milo Ballou  
 Edward Chambers ..... Gustav Ege ..... C. M. Ryan  
 J. E. German ..... Archibald Maclean ..... Fred Urban  
 Jack ..... Louis Guyette ..... Warren Cadwell  
 King ..... Lloyd Morrison ..... Stanley Burns  
 Nine .....  
 Richardson .....



		<b>Captain</b>	<b>Chief Engineer</b>
155	<b>Mohawk Navigation Co. Ltd., 635 Common St., Montreal, Que.</b>		
	<b>(Owner and Operator)</b>		
	R. A. Campbell, Managing Director		
Alfred Krupp (barge).....	352-44-26	5,700	Sam Brunet
Capt. C. D. Secord.....	346-48-24	9,000	J. A. Felker.....J. M. Gillies
Sir Thomas Shaughnessy.....	480-52-30	9,000	Angus MacKay.....William Keith

156 **Montreal Harbour, National Harbours Board, Montreal, Que.**  
**(Owner and Operator)**  
 Capt. J. P. Dufour, Harbour Master

Sir Hugh Allan (tug) .....	E. Lavolette.....	J. C. Jacques
Robert Mackay (tug) .....	M. Cournoyer .....	A. Vezina
John Young (tug) .....	Z. Perreault .....	R. Cossette
N.H.B. Floating Crane No. 1.....	E. Bourbonnais.....	S. Bibeau
N.H.B. Derrick No. 3.....		L. Chevrier
N.H.B. Derrick No. 5.....		D. Chevrier
N.H.B. Derrick No. 6.....		not in operation

**The Morrow Steamship Co. (See Fleet No. 170)**

157 **Morton Salt Co., 310 So. Michigan Ave., Chicago (Owner and Operator)**  
 Robert K. Warren, Manager

Covalt .....	253-44-25	F. O. Johnson.....	H. W. Schmock
--------------	-----------	--------------------	---------------

158 **National Motorship Corp., 17 Battery Place, New York (Owner and Operator)**

Cleveland (diesel electric) .....	Edward T. Comins.....	Charles Hoie
Detroit (diesel electric) .....	Fred J. Hill.....	Peter Eike

		<b>Captain</b>	<b>Chief Engineer</b>
159	<b>National Sand &amp; Material Co. Ltd., 402 Harbor Bldg., Toronto, Ont.</b>		
	<b>(Owner and Operator)</b>		
Baxter Dick .....	R. Munroe .....	Leonard Simpson	
Charles Dick .....	J. D. Reid .....	Corey Harvey	
O'Connor Dick .....	H. A. Tufts		

**National Steel Corp. (See Fleet No. 100)**

160 **Neff Transportation Co., 1833 Grasmere Ave., Cleveland**  
 Louisville (motor tug) .....

no appointments

161 **Neuman Boat Line, Sandusky, Ohio (Owner and Operator)**

Mascot (m.v.) .....	Harold Neuman .....	Jake Frederick
Messenger (m.v.) .....	Leonard Neuman	

162 **Newaygo Timber Co. Ltd., Port Arthur, Ont. (Owner)**  
 (Subsidiary of Consolidated Water Power & Paper Co.)

Rocket .....	Arthur H. Harpell.....	Carl Ringham
--------------	------------------------	--------------

(See also Fleet No. 51)

163 **Niagara, St. Catharines & Toronto Railway Co., St. Catharines, Ont.**  
**(Operator)**

Canadian National Railways (Owner)  
 J. R. Empringham, Superintendent

Northumberland .....	George Wilson .....	H. N. Bonnell
Dalhousie City .....	Dalhousie Navigation Co., C.N.R. (Owner)	
(See also Fleet No. 32)	George C. Childs.....	William Stewart

	Captain	Chief Engineer
164	<b>Nicholson, William, P. O. Box 66, River Rouge (Operator)</b>	
	Nicholson Transit Co. (Owner)	
	Herbert H. Parsons, Marine Supt.	
Adrian Iselin .....	Thos. Legault .....	J. Rumble
Chas. Donnelly .....	W. J. Edgar .....	Roy Walker
Fellowcraft .....	A. Peterson .....	S. Katcher
Fleetwood .....	W. R. Neal .....	E. Basney
F. E. Harvey .....	no appointments	
Ironwood .....	Wm. Rinn .....	S. Daucher
E. C. Pope .....	Henry Walton .....	B. Cascadden
Steel King .....	H. Booth .....	C. Rexford
Swederope (barge) .....	Wm. Caulkett .....	
Tampico .....	Ed. Tobin .....	B. Swanson
James Watt .....	C. A. Ticknor .....	C. Nicholson
	Ecorse Transit Co. (Owner)	
H. Dahlke .....	Leslie Gundry .....	G. Edmunds
Oakwood .....	M. Brewer .....	A. Proulx
	Tri-Lakes Steamship Co. (Owner)	
Rockwood .....	E. H. Cullen .....	Frank Burkman
	Nicholson Transit Co. (See Fleet No. 164)	
165	<b>Nicholson Universal Steamship Co., 1440 E. Atwater St., Detroit</b>	
	(Owner and Operator)	
	F. L. Hewitt, President; O. W. Benham, Vice President, Operations	
Coralia .....	E. Massman .....	F. Rourk

96

	Captain	Chief Engineer
Crescent City .....	H. B. McCool .....	C. Sampson
Penobscot .....		
Sonoma .....	D. Elliott .....	B. Beauchamp
Sonora .....	J. W. Galton .....	O. Merrill
South Park .....	C. Tobin .....	H. Lozon
Sultana .....	W. Fehley .....	H. Shaw
Graham C. Woodruff .....	J. McKinnon .....	T. Quigley
166	<b>North American Transports, Ltd., 635 Common St., Montreal, Que.</b>	
	R. A. Campbell, Managing Director	
Redcloud (m.v.) .....	J. J. Lawrence .....	A. F. Scott
Redfern (m.v.) .....	A. J. Irvine .....	C. K. Aitken
Redriver (m.v.) .....	Walter Kirk .....	B. Gaumond
Redwood (m.v.) .....	J. J. Mailhot .....	F. Oakley
167	<b>Northern Paper Mills Ltd., Coppell, Ont.</b>	
	A. K. McNaughton, Secretary	
Norco .....	Alex R. Cleave .....	Howard Hazlett
168	<b>Northwest Steamships Ltd., 59 King St., East, Toronto, Ont.</b>	
A. A. Hudson .....	Dalton Hudson .....	E. N. Ramsay
Superior .....	S. C. Bell .....	A. E. Hurst
169	<b>Northwestern Co., Sturgeon Bay, Wis. (Owner and Operator)</b>	
Fred W. Green .....	Ole Jacobsen .....	Henry Isaaksen

97

		<b>Captain</b>		<b>Chief Engineer</b>	
<b>170</b>	<b>Oglebay, Norton &amp; Co., 1208 Hanna Bldg., Cleveland (Operator)</b> Columbia Transportation Co. (Owner)				
M. J. Bartelme	412-48-28	24	6,000	H. P. Ellsmere	A. Muhlitner
Thomas Britt	413-52-28	24	6,800	D. Aston	C. Leitch
Harry T. Ewig	346-48-28		5,000	N. C. Larsen	W. R. Freeman
Joseph H. Frantz	592-62-32	24	12,000	H. F. Wiersch	H. B. Moore
Charles W. Galloway	504-54-30	24	9,000	R. J. Reid	H. P. Roberts
Howard M. Hanna, Jr.	504-54-30	24	9,000	F. Blacklock	C. Williamson
W. W. Holloway	532-56-31	12	10,300	J. S. Moran	J. E. Eustice
O. S. McFarland	360-50-28		5,800	J. C. Grefor	G. R. McCullough
E. G. Mathiott	346-48-28	24	4,800	J. Olson	O. Peterson
J. Clare Miller	525-55-31	12	9,700	J. F. Richardson	O. Andersen
R. E. Moody	354-48-28	24	4,800	W. C. Ruddle	W. E. Wood
David Z. Norton	480-52-30	24	8,200	W. Borresen	W. Leimbach
W. B. Pilkey	412-48-28		6,000	D. Huser	C. Swartz
G. G. Post	346-48-28		5,000	C. V. Cox	J. Schuler
W. C. Richardson	420-52-28	24	7,300	B. Lambert	A. E. Bates
J. R. Sensibar	530-56-31	12	9,500	H. N. Millington	A. O. Berg
Wm. F. Stifel	420-52-28	24	7,300	H. J. Miller	M. Bertelsen
S. B. Way	532-58-31	12	10,500	P. P. Lennon	C. W. Gustin
The Morrow Steamship Co. (Owner)					
Robert J. Paisley	410-48-28	24	6,600	D. M. Crooker	E. Jacques
The J. A. Paisley Steamship Co. (Owner)					
Ben E. Tate	356-50-28	24	5,600	F. L. Meno	J. Arbter

86

		<b>Captain</b>		<b>Chief Engineer</b>	
The Saginaw Dock & Terminal Co. (Owner)					
Carrollton	241-43-22	2,500	C. Ferguson	A. H. Thompson	
Saginaw	251-44-23	2,800	J. M. Conlon	R. K. Laderach	
<b>171</b>	<b>Ontario Car Ferry Co. Ltd., 384 St. James St., Montreal, Que.</b> R. B. Teagle, Manager				
Ontario No. 1 (car ferry)			W. Bryson	D. S. Anderson	
Ontario No. 2 (car ferry)			S. H. McCaig	C. Morrison	
<b>172</b>	<b>Ottawa, Department of Public Works, Ottawa, Ont. (Owner and Operator)</b>				
Hercules (tug)			Norman Jackson	William H. Baker	
P.W.D. No. 117 (dredge)				John Howell	
<b>173</b>	<b>Owen Sound Transportation Co. Ltd., 1101 First Ave., West, Owen Sound, Ont.</b>				
Manitoulin			R. Morrison	William Owens	
Normac (m.v.)			O. S. Long	W. Monkhouse	
(Operating joint sailings with Dominion Transportation Co. Ltd., See Fleet No. 68)					
The J. A. Paisley Steamship Co. (See Fleet No. 170)					
<b>174</b>	<b>Paterson Steamships Ltd., Fort William, Ont. (Owner and Operator)</b> Port Captains: J. D. Montgomery, Montreal; R. J. Wilson, Windsor, Ont.				
Bricoldoc			H. Odesse	W. Smith	
Canadoc			J. N. Foote	W. E. Lalonde	
Cartierdoc			W. A. Boulton	R. Smith	
Coteaudoc			J. C. Prowse	L. O. Lamoureaux	
Farrandoc			A. J. Vallis	E. C. Featherstone	

66

Fort Wildoc .....  
 Ganandoc .....  
 Hamildoc .....  
 Kingdoc .....  
 Lachinedoc .....  
 Lavaldoc .....  
 Lawrendoc .....  
 Mantadoc .....  
 Mondoc .....  
 Newbrundoc .....  
 Ontadoc .....  
 Prescodoc .....  
 Prindoc .....  
 Quedoc .....  
 Sarniadoc .....  
 Saskadoc .....  
 Soodoc .....  
 Soreldoc .....  
 Torondoc .....  
 Troisdoc .....  
 Vandoc .....  
 Wellandoc .....  
 Windoc .....

Captain	Chief Engineer
R. E. Chapman	P. W. Pratt
N. Johnston	R. R. Reid
M. Mongeau	C. W. Vent
R. Simpell	E. W. Sparling
X. Daneau	W. Mooney
W. A. Sabine	A. Chalmers
B. R. Greir	H. Abercrombie
E. W. Baker	T. J. Dryburgh
R. F. Simpson	A. Plant
F. Butters	W. J. Colville
H. B. Hunt	L. Buttler
L. Legendre	F. Fawcett
A. H. Simpell	H. Cross
F. A. Garrett	R. F. Hicks
R. A. Cameron	J. Kennedy
W. J. Kirkwood	J. Robinson
C. Courtemanche	P. Audette
R. Gignac	J. Ash
N. Somers	W. Tymon
T. Jewitt	J. Nicol
R. Mallette	
K. C. Clark	S. Pitfield

100

	Captain	Chief Engineer
175	<b>Pennsylvania-Ontario Transportation Co., 327 Rockefeller Bldg., Cleveland</b> (Owner and Operator) J. L. Tinny, Manager	
Ashtabula (car ferry)	C. F. Meyers	H. G. Else
176	<b>Pere Marquette Railway Co., General Motors Bldg., Detroit</b> (Owner and Operator) L. H. Kent, Superintendent of Steamships (all vessels are car ferries)	
Pere Marquette 12	Thomas A. Brown	Charles Millett
Pere Marquette 14	Eric Eklund	Richard McGuire
Pere Marquette 18	A. J. Londry	Otto Olson
Pere Marquette 21	A. Altschwager	Geo. Liebetreu
Pere Marquette 22	Jens Vevang	Thomas Loy
City of Saginaw 31	C. S. Cronberg	Henry Akesson
City of Flint 32	J. F. Johnson	G. W. Larsen
City of Midland 41	C. E. Robertson	Richard Langrill
177	<b>Petosky Transportation Co., Petosky, Mich. (Owner and Operator)</b> H. H. Lucas, Vice President	
J. B. John	F. P. Russell	Ervin Wendorff
178	<b>Pickands, Mather &amp; Co., Union Commerce Bldg., Cleveland (Operator)</b> The Interlake Steamship Co. (Owner)	
Thomas F. Zealand, Marine Supt.;	Charles E. Collins, Fleet Engineer	
Adriatic	George A. O'Boyle	Lloyd Thompson
Arcturus	Erling B. Jackson	Henry Emersen

101

Fayette Brown	504-54-30	12	9,350
Harvey H. Brown	532-58-32	12	10,350
Calumet	420-52-29	12	7,200
J. A. Campbell	525-58-31	12	10,550
Canopus	462-50-28	24	7,800
Cetus	416-50-28	24	6,900
E. A. S. Clarke	532-56-30	12	10,200
Corvus	416-50-28	24	6,900
Harry Coulby	607-65-33	24	13,700
Crete	480-52-30	12	8,450
Harry W. Croft	504-58-30	24	9,900
Cygnus	416-50-28	24	6,900
Henry G. Dalton	580-60-32	12	11,900
Wm. B. Davock	420-52-28	24	7,200
Elba	420-52-28	12	7,200
Hemlock	420-52-28	12	7,200
Robert Hobson	580-60-32	24	11,900
Elton Hoyt II	530-56-32	12	10,000
Harry R. Jones	448-52-28	12	7,800
Lagonda	375-46-28		
C. H. McCullogh Jr.	512-56-31	12	10,200
William McLaughlan	580-60-32	24	11,900
Samuel Mather	580-60-32	24	11,900
D. O. Mills	532-58-32	12	10,350
Jay C. Morse	532-58-31	12	10,350

### Captain

### Chief Engineer

Robert A. Endelman	John Cannon
Frank Van Dusen	Robert H. Folkert
John W. Malloch	Albert W. Jess
C. Earle Downs	Russell F. Ouellette
Dan S. Erickson	Harley D. May
Stanley Kielbasa	Samuel Olausen
Ross Campbell	Wm. J. McSweeney
John C. Tilley	Albert J. Zobi
Sidney H. Smith	Leo Arnold
A. G. Bammel	Edward Morris
Willis B. Spencer	John F. Johnson
John Larsen	Arthur Jacobs
H. Chesley Inches	Chester Bell
Roy F. Wuest	Ralph M. Britz
Carl W. Basch	Clarence A. Delong
Hans C. Hansen	Ray Arnold
John L. McNellis	Milton Frye
Emmett C. O'Connell	Leo G. Bammel
Nels B. Larsen	William Jess
Guy L. Smith	Thos. W. Johnston
J. Marshall Duddleson	William Anderson
Martin O. Ness	Frederick C. LaLonde
Roy E. Johnson	William SchAAF
T. Howard Saunders	Louis M. Richardson

102

### Captain

### Chief Engineer

Odanah	420-52-28	12	
Pathfinder	530-60-32	12	10,550
Pegasus	416-50-28	24	6,900
Perseus	462-50-28	24	7,800
Col. Jas. Pickands	580-60-32	24	11,900
James H. Reed	448-52-28	12	7,800
C. S. Robinson	525-55-31	12	9,850
Saturn	416-50-28	12	6,900
Charles M. Schwab	580-60-32	24	11,900
Joseph Sellwood	525-55-31	12	9,850
John Sherwin	514-54-31	24	9,550
Amasa Stone	525-55-31	12	9,750
Taurus	416-50-28	24	6,900
Vega	416-50-28	12	6,900
Venus	346-48-28		
Verona	480-52-30	24	8,450
James C. Wallace	532-56-31	12	10,400
Augustus B. Wolvin	540-56-32	12	10,450
Youngstown	580-60-32	12	11,900

John M. McCarthy	John W. Antons
James Larsen	John E. Vigneron
Henry W. Reinhold	Aubrey Daniels
Robert M. Magnuson	C. Adolph Anderson
Walter L. Girardin	Vincent Zobel
Robert B. Leah	Robert O. Fletcher
Victor J. Noel	John Keller
Ralph T. Fenton	Ashley J. Arnold
Alfred C. Drouillard	Hugo A. Dietlin
Wm. E. Sullivan	William Fritz
Harry Everson	Lawrence R. Goulette
Byron G. Stewart	Carl Backman
Otto H. Schwedler	Harmon Bourlier
N. M. Pederson	Thos. N. Olsen
Frank B. Harmon	Ralph D. Bammel
Frederick J. Lawrence	Thos. T. Miller
Andrew E. Olsen	Samuel M. Sanderson
Chesley C. Stewart	Arthur J. Hoffman

103

179 Pine Ridge Navigation Co., Ltd., 437 Ouellette Ave., Windsor, Ont.  
A. D. Cronin, Manager

Jean Fraser (tug)	
Rose Burgess (barge)	
Great Western (barge)	

F. T. Sinnott	John Smith
J. Davis	
W. Miller	

	Captain	Chief Engineer
180	<b>Pine Ridge Transportation Co., 716 Fidelity Bldg., Detroit</b>	
	M. Elsey, Dock Supt.; Arthur D. Cronin, General Manager	
Pine Ridge	C. E. Rattray	L. Pollack
	<b>Pioneer Steamship Co. (See Fleet No. 106)</b>	
181	<b>Pioneer Transportation Co. Ltd., 660 Richmond St., London, Ont.</b>	
	W. L. Baragar, Manager	
Supertest (m.v.)	W. H. Rees	C. A. Reed
182	<b>Pittsburgh Coal Co., 2300 Terminal Tower, Cleveland</b>	
	(Owner and Operator)	
	W. G. Wilhelm, Lake Sales Manager; J. P. Doyle, Gen. Supt.	
Pittsburgh	Thomas Burns	
183	<b>Pittsburgh Steamship Co., Rockefeller Bldg., Cleveland (Owner and Operator)</b>	
	W. P. McElroy, Fleet Captain; J. F. Wood, Fleet Engineer	
B. F. Affleck	580-60-32 24 12,000	J. A. Smith W. A. Churchill
Geo. F. Baker	580-58-32 12 11,300	A. C. Penzenhagen J. R. Bowermaster
Clarence A. Black	414-50-28 24 6,650	J. E. Tomlin G. C. Morrison
E. J. Buffington	580-58-32 12 11,400	W. T. Simonds W. F. Parker
Robt. W. E. Bunsen	439-50-29 <sup>6</sup> / <sub>24</sub> 7,100	C. M. Christensen M. C. Smith
D. M. Clemson	580-60-32 12 12,200	A. C. Johnson E. H. Oehlenschlager
Wm. G. Clyde	580-60-32 24 12,000	D. M. LeRoy R. W. Townsend
Thos. F. Cole	580-58-32 12 11,500	D. E. Manuel A. A. Lyman
E. C. Collins	420-50-28 24 6,700	Frank Quinn S. T. Kemmerly
W. E. Corey	549-56-31 24 10,300	L. J. Brisette O. J. Berger
Cornell	454-50-28 <sup>6</sup> / <sub>24</sub> 7,100	F. H. Pratt E. W. Anderson

104

Geo. G. Crawford	585-60-32 12 11,700
Wm. B. Dickson	580-58-32 12 11,500
Alva C. Dinkey	580-58-32 12 11,300
Wm. Edenborn	478-52-30 24 8,000
Isaac L. Ellwood	478-52-30 24 8,000
James A. Farrell	580-58-32 12 11,700
A. H. Ferbert	420-50-28 24 6,700
Wm. J. Filbert	585-60-32 12 11,700
H. C. Frick	549-56-31 12 10,500
Robert Fulton	414-45 <sup>6</sup> / <sub>28</sub> 24 5,800
E. H. Gary	549-56-31 24 10,500
John W. Gates	478-52-30 24 8,000
Harvard	454-50-28 <sup>6</sup> / <sub>24</sub> 7,100
A. F. Harvey	580-60-32 24 12,100
J. A. Hatfield	580-60-32 24 12,100
James J. Hill	478-52-30 24 8,000
Douglas Houghton	456-50-29 24 7,300
Francis E. House	585-60-32 12 11,700
John Hulst	586-60-32 <sup>6</sup> / <sub>24</sub> 12,000
W. A. Irvin	586-60-32 <sup>6</sup> / <sub>24</sub> 11,900
Horace Johnson	580-60-32 12 11,900
D. G. Kerr	580-60-32 12 12,200
Thomas W. Lamont	580-60-32 24 12,000
R. V. Lindabury	580-60-32 24 12,100
Thomas Lynch	580-58-32 12 11,200
W. A. McGonagle	580-60-32 12 12,200

Captain	Chief Engineer
Wm. Ward	Harry Barteldt
E. D. Purdy	J. F. Oakley
H. J. Needham	F. W. Leng
G. M. Sandiford	Earl Lockhart
T. F. Burns	R. S. Curry
John Crerar	C. D. Reno
Geo. Davis	M. H. Smith
Geo. Comins	F. J. Manion
J. M. Boyce	R. W. Armstrong
D. McDermid	R. A. Evans
R. A. DeWitt	Jas. Amenson
A. G. Waurzyniak	F. F. Hunger
W. H. Paver	M. O. Waldeland
E. K. Male	W. T. Welsh
C. J. Kearns	J. T. Schei
R. C. Hoglund	W. H. Annesley
Geo. Gay	J. M. Mikell
A. W. Dana	L. B. David
A. T. Patchett	C. A. Suttle
J. N. Rolfson	W. P. Bourlier
R. C. Caughell	W. A. Lewis
H. D. McLeod	Thos. Reinert
Ed. Palm	C. S. McIntyre
F. Davenport	Conrad Sahlen
H. L. Buckley	H. E. Lickfeldt
W. H. McLachlan	P. F. McDonnell

105

John McLean	414-50-28	24	6,700
Malietao	454-50-28'6"24		7,400
Mataafa	430-50-28'6"24		6,900
Maunaloa	430-50-28'6"24		6,800
Miller, Governor	586-60-32'6"24		11,900
Pentecost Mitchell	414-50-28	24	6,600
J. P. Morgan Jr.	580-58-32	12	11,300
J. Pierpont Morgan	580-58-32	12	11,300
Samuel F. B. Morse	456-50-29	24	7,300
Wm. J. Olcott	580-58-32	12	11,500
Wm. P. Palmer	580-58-32	12	11,800
E. W. Pargny	580-60-32	12	12,300
Geo. W. Perkins	549-56-31	24	10,400
Henry Phipps	580-58-32	12	11,200
Orlando M. Poe	470-50-29	24	7,500
Princeton	454-50-28'6"24		7,000
Queen City	400-48-28	24	6,100
Norman B. Ream	580-58-32	12	11,300
Rensselaer	454-50-28'6"24		7,000
Percival Roberts Jr.	580-58-32	12	11,700
H. H. Rogers	580-58-32	12	11,200
Wm. B. Schiller	580-58-32	12	11,500
McGilvray Shiras	420-50-28	24	6,700
Myron C. Taylor	580-60-32	24	12,000
Eugene P. Thomas	580-60-32	24	12,000
Richard Trimble	580-58-32	12	11,800

Captain	Chief Engineer
Frank Wilcox	C. A. Britton
M. M. Crawford	A. A. Baker
G. A. Lehne	V. N. Ax
A. M. Everett	E. F. Heckel
J. C. Murray	W. B. Danforth
F. L. Palagyi	R. I. Dillenbeck
R. W. Parsons	H. W. Bremer
Swen Fotland	F. J. Goller
M. Rushin	R. W. Hogle
C. H. Johnson	A. K. Brake
C. C. Carlisle	C. C. Rector
Henry Osier	W. F. Oehlingschlager
W. H. MacBeth	F. G. Hazen
Geo. C. Chambers	B. H. Hesler
Thor Nelson	F. J. Cunningham
W. J. Seligman	L. M. Morrison
R. F. Radike	A. L. Haller
D. T. Whitlock	J. B. Bellow
C. J. Paver	H. F. Parker
C. A. Wallace	W. A. Marshall
C. J. Brinker	Robert Conlon
A. H. Nielson	C. H. Savage
C. E. Gerlach	G. E. Anderson
H. Leisk	W. G. Staley
H. Ashby	H. W. Endelman
F. H. Roach	H. G. Rood

106

R. H. Watson	586-60-32'6"24	12,000
Peter A. B. Widener	580-58-32	12 11,200
H. D. Williams	580-60-32	12 12,200
Zenith City	380-48-28	24 5,600
August Ziesing	580-60-32	12 12,000
Fritz (barge)	438-50-28'6"24	7,900
Roebling (barge)	438-50-28'6"24	7,800

Captain	Chief Engineer
D. W. McLeod	Leland Haggan
A. J. Winkel	A. L. Rhodes
C. A. Horton	W. R. Miller
E. C. Baganz	E. A. Bradley
Homer Johnson	G. R. Emrey
C. O. Hamet	
Alf. Olson	

107

**184 Porter, J. P., & Sons, Ltd., 936 Dominion Square Bldg., Montreal, Que. (Owner and Operator)**

Alice (tug)	
F. Dupre (tug)	
Hector Porter (tug)	
Lawrence T. Porter (tug)	
Letitia Porter (tug)	
Rouille (tug)	
Delver (dredge)	
Fundy (dredge)	
Halifax No. 25 (dredge)	
Shuniah (dredge)	

G. Livingstone	L. Houde
D. Pitt	H. Oakes
G. Scott	W. Robar
J. Dort	J. A. McNeil
A. Paquette	S. Allen
J. R. McLean	L. Sharkey
J. Gamble	W. MacIntyre
A. Kennedy	F. Bouchard
A. Doane	B. Doane
R. Bursay	W. Pitts

**185 Prescott & Ogdensburg Ferry Co. Ltd., Prescott, Ont. (Owner and Operator)**  
S. J. Delaney, Port Captain

Joseph Dubrule	Boivin	R. Lashmar
Levis	Hugh Willard	W. Chretien

Presque Isle Transportation Co. (See Fleet No. 45)

	Captain	Chief Engineer
<b>186</b>	<b>Pringle Barge Line Co., The, Buhl Bldg., Detroit</b>	
Barkhamstead (tug) .....	Einar Miller	
Crusader (tug) .....	Eric B. Miller	
Jesse James (tug) .....	John C. Ryan	
(nee John E. Meyer)		
Constitution (barge) .....	J. H. Alexander	
Maida (barge) .....	Bert Peltier	

<b>187</b>	<b>Provincial Paper Ltd., Port Arthur, Ont. (Owner and Operator)</b>	
Thomas Maitland (tug) .....	Geo. Mathison .....	Bert Nelson
Strathbogie (tug) .....	W. C. Charlton .....	D. Lanktree
	<b>Pure Oil Steamship Co. (See Fleet No. 94)</b>	

<b>188</b>	<b>Purvis, Capt. John, Gore Bay, Ont. (Owner and Operator)</b>	
E. D. M. Purvis (tug) .....	John Purvis .....	Norman McDonald

<b>189</b>	<b>Pyke Towing &amp; Salvage Co., Kingston, Ont. (Owner and Operator)</b>	
	Grant Pyke, Manager	
George T. Davie (barge) .....	Capt. MacDonald	
Hilda (barge) .....	Capt. Johnson	
Salvage Prince (tug) .....	G. Pyke .....	E. Reid
Salvage Queen .....	W. Felix .....	Thomas Campeau
Warrenco (barge) .....	W. Botting	
	No appointments for barges Anarco, Sand Boy and Stone Boy	

<b>190</b>	<b>Quebec Harbour, National Harbours Board, (Owner and Operator)</b>	
Aviso (tug) .....	not in operation	

	Captain	Chief Engineer
<b>191</b>	<b>Quebec &amp; Ontario Transportation Co. Ltd., 680 Sherbrooke St., West Montreal, Que.</b>	
	F. J. Byington, Superintendent	
Chicago Tribune (m. v.) .....	F. V. McIntyre .....	J. N. Fleming
Franquelin (m. v.) .....	J. O. Beaudoin .....	W. Graham
Heron Bay .....	Geo. Ferguson .....	W. E. Carr
New York News .....	R. J. Brown .....	G. Coffin
Outarde .....	W. E. Redfean .....	W. Godkin
Shelter Bay .....	D. Gendron .....	H. Collins

<b>192</b>	<b>Reger &amp; Werner Fish Co., Lorain, O. (Owner and Operator)</b>	
George Edward (tug) .....	George Floro	
Barbara Jo (gas) .....	Ed Witt	
Evelyn R. (gas) .....	Al Snell	
Francis R. (gas) .....	Howard Cutcher	
Jerry W. (gas) .....	Carl Werner	

<b>193</b>	<b>Reiss, C., Coal Co., Sheboygan, Wis. (Owner and Operator)</b>	
	W. W. Newcomet, Manager; H. J. Rake, Fleet Engineer	
Green Bay (tug) .....	John Moore .....	Michael Wirth
Reiss (tug) .....	William H. Armstrong .....	L. Lewandowski
	Glen Bergerson	

<b>194</b>	<b>Reiss Steamship Co., Sheboygan, Wis. (Operator)</b>	
	Reiss Steamship Co., Wilmington, Del. (Owner)	
	W. W. Newcomet, Manager; H. J. Rake, Fleet Engineer	
A. M. Byers .....	M. A. Baizaire .....	James Nelson





	Captain	Chief Engineer
Portwell .....	J. A. Dennis .....	J. Finlay .....
Starwell .....	J. Bowie .....	R. M. Crawford .....
Colonial Steamships Ltd. (Owner)		
Bayton .....	416-50-28 .....	7,500 J. H. Glass .....
Berryton .....	480-52-30 .....	8,300 J. E. Stewart .....
Laketon .....	416-50-28 .....	7,800 C. E. Misener .....
Mathewston .....	530-58-31 .....	10,000 W. J. Moles .....
Riverton .....	452-48-28 .....	7,800 E. C. Hawman .....
Royalton .....	530-58-31 .....	12,000 C. R. Albinson .....
McKellar Steamships Ltd. (Owner)		
Livingston .....	E. S. Bailey .....	T. Newham .....
Waterton .....	D. L. Wilson .....	J. G. Irwin .....

**201 Scanes Boat & Dock, James, 401 Ohio St., Toledo, O.**  
 Fort Meigs .....

James Scanes .....	Joseph H. Scanes .....
--------------------	------------------------

**Schneider Transportation Co. (See Fleet No. 45)**

**202 Scott, Thomas J., 489 Bay St., Sault Ste. Marie, Ont. (Owner and Operator)**  
 T. J. Scott (tug) .....

T. J. Scott .....	Ike Murray .....
T. J. S. No. 1 (scow) .....	J. Biron .....

**203 Shenango Furnace Co., 1961 Union Commerce Bldg., Cleveland (Operator)**  
 Shenango Furnace Co., Pittsburgh (Owner)  
 C. J. Peck, Manager; W. F. Riley, Superintendent

Col. J. M.  
 Schoonmaker .....590-64-33 12 12,600 F. M. Hood .....John Mansika

	Captain	Chief Engineer
Shenango .....	585-58-32 12 11,400 R. Carlsen .....	Chas. Volk .....
Wm. P. Snyder Jr. ....	590-64-33 12 12,600 Frank H. Ott .....	Albert Fritz .....
Sierra Steamship Co. (See Fleet No. 214)		

**204 Sincennes-McNaughton Line Ltd., 635 Common St., Montreal, Que. (Owner)**  
 Joseph Simard, President; R. A. Campbell, Managing Director

Brighton (barge) .....	L. Hebert .....
Cobourg (barge) .....	Morel Compeau .....
Londonderry (barge) .....	Joe Compeau .....
Yvon Dupre Jr. (tug) .....	P. Bibeau .....
Eureka (tug) .....	Z. Bibeau .....
Felicia (tug) .....	J. Millette .....
Fire Chief (tug) .....	E. Blais .....
Fredmac (tug) .....	not in commission
Mathilda (tug) .....	E. Houde .....
John Pratt (tug) .....	G. Couillard .....
Pierre Racine (tug) .....	not in commission
Hival (tug) .....	L. Orr .....
Sarnia City (tug) .....	not in commission

**205 \*Sorel Harbour Tugs Ltd., Sorel, Que. (Owner and Operator)**  
 No definite appointments made at beginning of season  
 Tugs Fraserville, Jean T., Joffre S., Marguerite T., Paul T., Jeanne T., Derrick  
 St. Laurent, Barges No. 3, Therese T. and 17 tow barges of 500 to 1500 tons capacity.

**206 South Chicago Coal & Dock Co., 222 West Adams St., Chicago, Ill.**  
 Koalkraft .....

Arthur J. Spotton .....	Harry Zivney .....
-------------------------	--------------------

**Captain**

**Chief Engineer**

207	<b>Sowards, Capt. J. F. Kingston, Ont. (Owner and Operator)</b>	W. Collins	J. Lamoureaux
Patdoris			
208	<b>Stadium Yacht Basin Inc., Foot of W. Third St., Cleveland</b>	T. R. Zickes, Vice President	
Albatross (tug)		not in commission	
209	<b>Standard Oil Co., Whiting, Ind. (Owner and Operator)</b>	F. D. Rexwinkle, Manager of Marine Dept.	
		(All vessels are tankers)	
William P. Cowan		J. Taylor	J. R. Henry
Red Crown		N. Johnson	A. Lippie
Beaumont Parks		E. Sell	A. Amolsch
Edward G. Seubert		E. Justmann	M. Swanson
Robert W. Stewart		G. Carlson	E. M. Smith
S. O. Co. "C" (barge)		S. Bruun	
Outagamie (tug)		not in commission	
210	<b>Steel Products Transportation Co., Alexandria Bay, N. Y.</b>	C. A. Massey	Clarence Wells
J. Floyd Massey Jr.			
211	<b>Steinbrenner, George M., 706 Rockefeller Bldg., Cleveland (operator)</b>		
		No appointments at opening of season	
		Kinsman Transit Co. (owner)	
Harry L. Findlay	532-56-31	12	10,200
Geo. M. Humphrey	586-60-32	24	12,000
Philip Minch	480-52-30	12	8,600
Henry Steinbrenner	420-50-28	24	6,900
			<b>Sumatra Steamship Co. (See Fleet No. 214)</b>

114

**Captain**

**Chief Engineer**

212	<b>Tees Transit Co., 48 Sterling St., Hamilton, Ont. (Owner and Operator)</b>	Capt. T. A. Tees, Manager	
Aragon		Richard Tackaberry	George Kinchen
C. W. Cadwell		Robert McKeen	Murdo MacIver
Sandland		Clarence Forbes	Alex Nicholson
		<b>Terminals &amp; Transportation Corp. (See Fleet No. 154)</b>	
213	<b>Texas Co., Marine Dept., 332 S. Michigan Ave., Chicago (Operator)</b>		
		Texas Co., 135 E. Forty-second St., New York (owner)	
Harvey (tug)		H. S. Miller	Jos. Spaniel
Latin American (tug)		J. E. Murphy	B. Graf
Maine		R. E. Lee	M. Pelmas
Texaco 155 (barge)		F. Bowman	
Texaco 156 (barge)		D. M. Blackman	
Texaco 158 (barge)			
214	<b>Tomlinson, G. A., 2900 Terminal Tower, Cleveland (Operator)</b>		
		Consolidated Steamship Co. (owner)	
M. E. Farr	580-60-32	12	12,000
		Continental Steamship Co. (owner)	
Chas. E. Dunlap	580-60-32	12	12,000
		Duluth Steamship Co. (owner)	
Sylvania	504-54-30	12	9,400

115

	<b>Captain</b>	<b>Chief Engineer</b>
	Globe Steamship Corp. (owner)	
Cuyler Adams.....	474-52-29 12 8,400	
Ball Brothers.....	480-52-30 12 8,900	
James Davidson....	580-60-32 12 12,000	
	Inter Ocean Steamship Co. (owner)	
Jas. E. Davidson....	504-54-30 12 9,400	
	Sierra Steamship Co. (owner)	
Sierra (self unloader) .....	438-52-28	J. E. Drury ..... L. Gallagher
	Sumatra Steamship Co. (owner)	
Sumatra (self unloader) .....	405-48-28	E. W. Gonyaw ..... H. J. Jewell
	Triton Steamship Co. (owner)	
Rufus P. Ranney...	420-52-28 24 7,200	
	United Steamship Co. (owner)	
Col. E. M. Young...	504-54-30	E. H. Cahours..... A. M. Bartow
<b>215</b>	<b>Toronto, City of Toronto, Ont. (Owner and Operator)</b>	
	R. C. Harris, Commissioner of Works	
G. R. Geary (tug) .....		F. T. Foulkes ..... J. H. Shaughnessy
Ned Hanlan (tug) .....		C. Niece ..... H. E. Baillie
<b>216</b>	<b>Toronto Transportation Commission, 35 Yonge St., Toronto, Ont. (Operator)</b>	
	City of Toronto (owner). H. C. Patten, General Manager; D. A. Peters, Marine Supt.	
Aylmer (motor tug) .....		
Bluebell .....		

	<b>Captain</b>	<b>Chief Engineer</b>
Buttercup (motor launch) .....		
T. J. Clark .....		
William Inglis (m.v.) .....		
Sam McBride (m.v.) .....		
Miss Simcoe (motor launch) .....		
Trillum .....		
Miss York (motor launch) .....		
<b>217</b>	<b>Transit Tankers &amp; Terminals Ltd., 31 St. James St., West, Montreal, Que. (Operator)</b>	
Itororo .....	A. Daneau .....	R. Marchand
Transiter (m.v.) .....	R. Tremblay .....	W. C. Castles
Translake .....	R. Chatel .....	E. Laplante
Transriver .....	O. Bibeau .....	A. Gagne
	<b>Tree Line Navigation Co. Ltd. (See Fleet No. 29)</b>	
	<b>Tri-Lakes Steamship Co. (See Fleet No. 164)</b>	
	<b>Triton Steamship Co. (See Fleet No. 214)</b>	

<b>218</b>	<b>Trois Rivières, City of Quebec (Owner and Operator)</b>	
	Phil. Bellefeuille, Supt.	
Cite des Trois-Rivières .....	Honoré Milot .....	Alfred Sauvageau
	Antoine Hamelin .....	Wilf. Lamothe
De Laverendrye .....	Camille Biron .....	Phil. Bouchard
	Murray Lewis .....	Henri Bouchard
	Eloi Toutant .....	William Sauvageau

	Captain	Chief Engineer
219	<b>Union Transst Co. Ltd., Excelsior Life Bldg., 36 Toronto St., Toronto</b>	
	Geo. R. Donovan, President	
	(Capacity in net tons at canal draft of 14 feet)	
William Schupp.....	253-43-20	W. J. Brown.....H. Fitzpatrick

220	<b>U. S. Engineer Office, War Department, 540 Federal Bldg., Buffalo</b>	
	George R. Goethals, Major, Corps of Engineers, District Engineer in Charge	
Burton (dredge) .....	John W. Wilke	
Churchill (tug) .....	Fletcher W. Booth .....	James Reed
Lockwood (survey boat) .....		
McDonough (tug) .....	Adrian Annal .....	Elmer J. Murphy
Quintus (diesel tug) .....		Harold K. Smith
Black Rock (tug) .....	John E. Fick .....	Andrew Kentos
Savannah (dredge) .....	Harry J. Ruddy .....	Wm. C. Dahlke
Taylor (dredge) .....	JAMES McCauley.....	Arthur N. Erickson

221	<b>U. S. Engineer Office, War Department, 932 Postoffice Bldg., Chicago</b>	
Thomas Lincoln Casey (tug) .....	not in commission	

222	<b>U. S. Engineer Office, War Department, 605 Federal Bldg., Detroit</b>	
Capt. A. Canfield (motor tender).....	Lawrence R. Barrett...Fernley J. Killips	
Detroit (quarterboat) .....	Allen E. Wright	
Dixon (motor survey boat) .....	James R. Burgess	
Erie (derrickboat) .....	Ernest W. Matkkee	
Col. J. D. Graham (motor tender) .....	Gustav J. W. Jacobson...Clarence Miller	
Kent (motor launch) .....	no appointment	
Merganser (derrickboat) .....	Wilho A. Ala	

	Captain	Chief Engineer
Alfred Noble (harbor tug) .....	Orlaf F. Sullivan...	Erwin G. McCartney
No. 3 (derrickboat) .....	Chas. P. Sims	
Pioneer (motor tender) .....	William F. Stepaniak	
Pronto (motor launch) .....	Philip McArthur	
St. Marys (quarterboat) .....	Richard K. Felix	
Sault Ste. Marie (motor launch).....	Melvin B. Seaman	
Wenzell (motor launch) .....	no appointment	
E. S. Wheeler (motor tender) .....	Thomas G. Fairbairn	
Wolcott (motor survey boat) .....	Harvey M. Hodge.....	William C. Brady

223	<b>U. S. Engineer Office, War Department, 408 Federal Bldg., Milwaukee</b>	
	Col. Charles J. Taylor, District Engineer; E. M. Nisen, Prin. Engineer	
Cumberland (tug) .....	Algie Alexander .....	Louis J. Hengartner
Kenosha (barge) .....	not in commission	
Manitowoc (steamer) .....	not in commission	
Marinette (tug) .....	Palmer E. LaPlante...	Andrew Tollefson
G. G. Meade (dredge) .....	Otto C. Grimm .....	Jess G. Lanridge
Menasha (tug) .....	Clifford E. Velte .....	David Clow
Milwaukee (barge) .....	Albert R. Nielson.....	Franklin C. Struck
Neenah (tug) .....	Lester G. LaPlante...	Francis Vaughan

224	<b>U. S. Div. of Naval Reserve, Ninth Naval District, Great Lakes, Ill.</b>	
U.S.S. Wilmette .....	Capt. E. A. Evers, D-O, USNR	
U.S.S. Wilmington .....	Lt.-Comdr. F. J. McManamon, D-O, USNR	

**Captain**

**Chief Engineer**

225

**United States Treasury Department—Coast Guard Vessels**

Commander, Cleveland District, U. S. Coast Guard, Keith Bldg., Cleveland  
(Address Commanding Officer)  
Vessels in Cleveland District

Ossipee .....	165 ft. cruising cutter	Sault Ste. Marie, Mich.
Tahoma .....	165 ft. cruising cutter	Cleveland, O.
CG-153 .....	75 ft. patrol boat	Wyandotte, Mich.
CG-173 .....	75 ft. patrol boat	Port Huron, Mich.
CG-192 .....	75 ft. patrol boat	Grosse Point Shores, Mich.
CG-219 .....	75 ft. patrol boat	Cleveland, O.
Amaranth .....	buoy tender	Duluth, Minn.
Aspen .....	buoy tender	Sault Ste. Marie, Mich.
Cherry .....	buoy tender	Buffalo, N. Y.
Crocus .....	buoy tender	Toledo, O.
Dahlia .....	buoy tender	Detroit, Mich.
Maple .....	buoy tender	Ogdensburg, N. Y.
Marigold .....	buoy tender	Detroit, Mich.
Tamarack .....	buoy tender	Detroit, Mich.
Walnut .....	buoy tender	Detroit, Mich.
Saint Mary's River Patrol .....		Sault Ste. Marie, Mich.

**Commander, Chicago District, U. S. Coast Guard, Room 816, New Postoffice Bldg., Chicago**

Vessels in Chicago District

Escanaba .....	cruising cutter	Grand Haven, Mich.
CG-119 .....	75 ft. patrol boat	Chicago

120

**Captain**

**Chief Engineer**

AB-3 .....	picket boat
Hyaenanth .....	lighthouse tender
Hollyhock .....	lighthouse tender

Chicago
Milwaukee
Milwaukee

**United Steamship Co.**

(See Fleet No. 214)

226

**United Towing & Salvage Co. Ltd., 635 Common St., Montreal, Que.**

(Operator)

A. F. Bowman (tug) .....	E. Konderka .....	M. Currie
Ponoka .....	C. Moore .....	V. C. Irvine
Strathmore (tug) .....	V. McCabe .....	J. Farquharson
Jas. Whalen (tug) .....	A. Morrison .....	J. Gehl
Coteau (barge) .....		
Iango (derrick scow) .....		H. L. Newton
Strathbuoy (derrick scow) .....		

121

**227 Upper Lakes & St. Lawrence Transportation Co., Ltd., Queen's Quay at Spadina Ave., Toronto, Ont.**

Frank B. Baird .....	A. H. Dixon .....	W. J. Collie
Blue Cross .....	C. C. Clattenburg .....	W. J. Pickard
Blue River .....	R. Bogie .....	S. E. Bonner
Brown Beaver .....	A. W. Beatty .....	Frank McInnis
Bryn Mawr (barge) .....		
Ralph Budd .....	A. E. McGee .....	M. Leatherdale
Norman P. Clement .....	H. L. MacDonald .....	Leo Sampson
William H. Daniels .....	J. B. Stephens .....	G. Murphy
Edwin T. Douglass .....	W. J. Ferguson .....	E. Boudreault



**Wells Construction Co., 1121 Schofield Bldg., Cleveland****(Owner and Operator)**

R. A. Boccia, Fleet Captain

	<b>Captain</b>	<b>Chief Engineer</b>
Edward K. (tug) .....	A. P. Johnson .....	L. Reilly
Lorene (tug) .....	C. Bentley .....	
North Harbor (tug) .....	R. Hamilton .....	W. Voight
Red Crown (tug) .....	Oscar Tussell .....	
J. R. Sprankle (tug) .....	John McIver .....	L. Moore
Stella B. (tug) .....	Gus Greenland .....	
Norman Kelley (derrick scow) .....	Steve Boccia .....	
John H. Pellett (derrick scow) .....	Hugo Grafton .....	Tony Campesi
Wawasee (derrick scow) .....	Guido Pierpouli .....	Don Stanton
Welston (derrick scow) .....	Toni Mahi .....	W. Stafford

**234 Wilson Transit Co., 960 Rockefeller Bldg., Cleveland (Owner and Operator)**

Captain Joseph S. Wood, President

	<b>Captain</b>	<b>Chief Engineer</b>
Chas. S. Hebard... 504-54-30 12 9,500	Jos. Konkel .....	Swan Swanson
Robt. L. Ireland... 504-54-30 12 9,600	Wm. F. Gardner .....	H. F. Bangs
Edw. S. Kendrick... 520-54-31 24 9,700	J. J. Phillips .....	Chas. Schack
A. T. Kinney... 504-54-30 12 9,600	Roy F. Woodford .....	Frank Heagerty
E. J. Kulas... 580-60-32 24 11,700	George Stewart .....	Hans T. Meyers
Jas. McNaughton... 580-60-32 12 11,700	M. A. Mausolf .....	J. C. Reynolds
A. W. Osborne... 400-48-28 12 6,300	Peter Petersen .....	David Campbell
Chas. A. Paul... 520-54-31 24 9,700	Arnold Pedersen .....	John Norton
S. H. Robbins... 444-50-29 24 7,100	Bertram Davies .....	Phil. Johnson
Frank E. Taplin... 420-52-28 12 7,100	William G. Coles .....	Bernie Williams

J. E. Upton .....	504-54-30	12	9,500
Robt. B. Wallace... 525-55-31		12	9,900
Capt. Thos. Wilson... 420-50-29		12	6,800

**Captain****Chief Engineer**

Henry C. Borgen .....	William McKenzie
M. D. McQueen .....	Archie Raymond
Arthur Mausolf .....	H. R. Morse

**235 Wisconsin & Michigan Steamship Co., 350 N. Plankinton Ave., Milwaukee****(Owner and Operator)**

L. N. Biron, President and General Manager; Mark T. McKee, Vice President

Illinois .....	not in commission
Missouri .....	not in commission
Milwaukee Clipper .....	A. K. Hoxie .....
Nevada .....	A. K. Hoxie .....

**236****Wolfe Island, Corporation, Wolfe Island, Ont.**

Wolfe Islander .....	James Mahoney .....	R. Mullin
----------------------	---------------------	-----------

**237****Wyandotte Transportation Co., 1622 Ford Bldg., Detroit**

N. H. Morgan, Charter Agent; R. W. Smith, Superintending Engineer		
Alpena .....	356-47-27	5,500
Conneaut .....	416-56-30	8,000
Huron .....	416-56-30	8,000
Wyandotte .....	346-45-27	4,500

John E. Broadwell .....	Leonard Caley
W. H. Yates .....	Justin Houston
J. C. McCormick .....	Neil MacNeil
Henry F. Kresin .....	Earl N. Wilson

**238 Zenith Dredge Co., 403 Bradley Bldg., Duluth (Owner and Operator)**

Donald B (tug) .....	P. Hernbin
Fayling (tug) .....	not in commission
Alice Vivian (dredge) .....	John V. Carlson .....
Dredge No. 2 .....	Fred C. Wright



Centrifugal  
Pumps



SUPERIOR PUMPS FOR ALL SERVICES

ESTABLISHED 1869

**DEAN BROTHERS PUMPS / INC.**

**INDIANAPOLIS / IND.**  
323 W TENTH ST.

Reciprocating  
Pumps

## Directory of Shipbuilding and Ship Repair Yards on the Great Lakes

### The American Ship Building Co.

1410 Terminal Tower  
Cleveland, Ohio

W. H. Gerhauser, President.  
J. L. Wallace, Assistant to President.  
J. E. Davidson, Vice President and Treasurer.  
G. W. Cottrell, Vice President and General Counsel.  
Jas. S. Dickie, Vice President.  
R. B. Ackerman, Secretary and Auditor.  
G. C. Sheidler, Assistant Secretary and Assistant Treasurer.  
J. C. Workman, Chief Engineer.  
E. G. Turner, Chief Draftsman, Engineering Dept.  
Kent C. Thornton, Acting Naval Architect.  
John E. Steinman, General Superintendent.  
Fred L. Obert, Manager of Order Dept.

#### CLEVELAND PLANT

Foot of West 54th street, N. W.

James Thompson, Superintendent.

BUILDING BERTH: One; maximum size of ship,  
750 feet.

REPAIR FACILITIES: Fully equipped, with dry dock, machine shop, boiler shop, sheet metal shop, pipe shop, joinery shop, electrical shop, pattern shop, etc., for making complete repairs to ships' hulls, engines, boilers, and auxiliary machinery. 80-ton shear legs.

DRY DOCK: Length over all 547' 0"; width of entrance at top, 65' 0"; depth over sill 12' 9".

FLOATING REPAIR EQUIPMENT: One self-propelled steam derrick scow with 10-ton lift; one motor boat, and one barge, all equipped with air compressors, electric welding outfits, etc. Also, two delivery launches.

**GENERAL INFORMATION:** Carries complete stocks of propeller blades, grate bars, furnace fittings, auxiliary machinery parts, etc.

### LORAIN PLANT

Colorado avenue,  
Lorain, O.

**Joseph B. Conley**, Superintendent.

**BUILDING BERTHS:** Four; two for ships up to 735 feet, and two for ships up to 550 feet.

**REPAIR FACILITIES:** Fully equipped, with dry docks, machine shop, boiler shop, sheet metal shop, pipe shop, joinery shop, electrical shop, heavy forging shop, etc., for making complete repairs to ships' hulls, engines, boilers and auxiliary machinery. Two 80-ton shear legs.

**DRY DOCKS:** No. 1—Length over all, 586' 0"; width of entrance at top, 66' 0"; depth over blocks, 14' 6".

No. 2—Length over all, 736' 0"; width of entrance at top, 80' 0"; depth over blocks, 14' 6".

**FLOATING REPAIR EQUIPMENT:** One barge, equipped with air compressor, electric welding outfit, etc. Also, two delivery launches.

### TOLEDO PLANT

902-910 Water St.,  
Toledo, O.

**Jos. Koelbl**, Superintendent.

**REPAIR FACILITIES:** Fully equipped for making topside hull repairs of all types, and complete repairs to engines, boilers and auxiliary machinery.

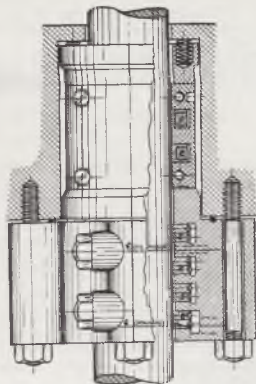
**FLOATING REPAIR EQUIPMENT:** One motor launch and one repair scow, both equipped with air compressors, electric welding outfits, etc.

### BUFFALO PLANTS

191-301 Ganson street,  
Buffalo, N. Y.

**L. H. Reynolds**, Superintendent.

**REPAIR FACILITIES:** Fully equipped, with dry docks, machine shop, sheet metal shop, pipe



**ANKORITE STYLE No. 669**

This is a hi-pressure marine split type packing with pressure breakers in groove 1 and 2 in a floating case which are non-collapsible and are intended to cut down initial pressure on packing before it reaches the collapsible packing rings in grooves 3-4 and 5. A spring bushing holds parts firmly in place, the outer case is drilled and tapped for oil and drain connections. The lower pair of rings is designed to strip water from the rod to the drain provided, thus eliminating the moisture around rods. It is a known fact that this combination is adding years of service to the collapsible rings in grooves 3-4 and 5.

### THE ANCHOR PACKING CO.

Headquarters

Philadelphia, Pa.

Metal Packing Div., Elyria, Ohio

**Branches:** Buffalo, 63 Andrews Bldg.; Cleveland, Ohio, 525 Rockefeller Bldg.; Chicago, Ill., 200 E. Illinois St.; Detroit, Mich., 169 W. Jefferson Ave.

shop, joinery shop, electrical shop, etc., for making complete repairs to ships' hulls, engines, boilers, and auxiliary machinery. 80-ton shear legs.

**DRY DOCKS:** No. 1—Length over all, 470' 0"; width of entrance at top, 61' 10"; depth over blocks, 13' 6".

No. 2—Length over all 630' 0"; width of entrance at top, 81' 2"; depth over blocks, 13' 10".

No. 3—Length over all, 401' 0"; width of entrance at top, 53' 0"; depth over blocks, 14' 6".

**FLOATING REPAIR EQUIPMENT:** One self-propelled steam derrick scow with 10-ton lift, and one barge, both equipped with air compressors, electric welding outfits, etc. Also, two delivery launches.

Foot of So. Michigan ave., Buffalo.

**REPAIR FACILITIES:** Fully equipped for making topside hull repairs of all types, and complete repairs to engines, boilers and auxiliary machinery.

**FLOATING REPAIR EQUIPMENT:** One steam tug; one deck scow equipped with 10-ton derrick; two deck scows equipped with welding outfits.

#### CHICAGO PLANT

101st street and Calumet river,  
South Chicago, Ill.

**John Sinclair**, Superintendent.

**REPAIR FACILITIES:** Fully equipped, with dry docks, machine shop, joinery shop, electrical shop, etc., for making complete repairs to ships' hulls, engines, boilers and auxiliary machinery. 80-ton shear legs.

**DRY DOCKS:** No. 1—Length over all, 520' 0"; width of entrance at top, 71' 8"; depth over blocks, 15' 0".

No. 2—Length over all, 727' 4"; width of entrance at top, 90' 2"; depth over blocks, 16' 0".

## NALCO WATER TREATMENT

offers many advantages to the Marine Engineer.

It keeps boilers and feedlines clean.

It is easy to handle. No measuring of chemicals.

No waste. No chemical burns.

No expensive feeding or blow-down equipment.

It is stored in 16 Great Lakes Ports.

Ask for  
"Nalco System for Marine Boilers".

**NATIONAL ALUMINATE  
CORPORATION**

6232 West 66th Place, Chicago, Ill.



**FLOATING REPAIR EQUIPMENT:** Two repair launches and one repair scow, equipped with air compressors, electric welding outfits, etc. Also, one delivery launch.

**SUPERIOR PLANT**

Clough Ave., and Third St., Superior, Wis.

**R. J. Close**, Superintendent.

**REPAIR FACILITIES:** Fully equipped, with dry docks, machine shop, joinery shop, electrical shop, etc., for making complete repairs to ships' hulls, engines, boilers, and auxiliary machinery.

**DRY DOCKS:** No. 1—Length over all, 609' 0"; width of entrance at top, 66' 0"; depth over sill, 13' 6".

No. 2—Length over all, 620' 0"; width of entrance at top, 66' 6"; depth over sill, 17' 6".

**FLOATING REPAIR EQUIPMENT:** Self-propelled steam derrick scow with 10-ton lift, and one motor boat, both equipped with air compressors, electric welding outfits, etc.

**Thomas B. Banner Boiler & Welding Co.**

15 West Ohio street, Chicago, Ill.

**John L. Banner**, President.

**GENERAL INFORMATION:** Have repair facilities to do plate work above water line. Do any kind of boiler and welding work.

**Canadian Vickers, Limited**

Maisonneuve, Montreal, Canada.

**J. Edouard Labelle, K. C.**, President.

**T. R. McLagan**, General Manager.

**J. W. Savidant**, Comptroller.

**W. J. Wardle**, Manager, Marine Department.

**REPAIR FACILITIES:** Fully equipped to handle any vessel coming to Montreal.

**BUILDING BERTHS:** Six; length 500 feet.

**DRY DOCK:** One floating dock, 600 feet long, operated in one or two sections.

# FUEL DOCK

at

## Ecorse-Michigan

On Detroit River alongside  
Great Lakes Shipyard

Automatic Weigh Scales

Conveyor Belt Delivery

Quality Coal—Fast Fueling

Capacity 600 tons per hour

## Nicholson Terminal & Dock Company

Telephone:

Scott B. Worden Vinewood 2-4305  
Mgr. Fuel Dept. Detroit

## The Collingwood Shipyards, Ltd.

Collingwood, Ont.

**REPAIR FACILITIES:** Fully equipped for all kinds of repairs to steel or wooden vessels—engines, boilers and auxiliaries.

**BUILDING BERTHS:** Five.

**DRY DOCKS:** No. 1—518' by 56' 0"; at entrance.  
No. 2—412' by 95' 0" at entrance.

**LIMITING CONDITIONS:** 14' 0" draught.

## Deepwater Shipbuilding & Construction Co.

371 Bay St., Toronto, Ont.

**R. C. Hughes,** President and Managing Director.

**BUILDING BERTHS:** Ten; 250 to 700 feet long.

**DRY DOCK:** One dock 650 feet long (under construction).

## Defoe Boat & Motor Works

Bay City, Mich.

**H. J. Defoe,** Manager.

**W. E. Whitehouse,** Asst. Manager.

**A. D. Defoe,** Purchasing Agent.

**Albert Johnson,** Superintendent.

**MARINE RAILWAY—**500 tons.

## Great Lakes Engineering Works

River Rouge, Mich.

**F. G. Morley,** President and Treasurer.

**George B. Turnbull,** Vice Pres. and Gen. Mgr.

**R. C. Lakin,** Secretary.

**Dwight True,** Naval Architect.

**Howard M. Varian,** Chief Engineer.

**Wm. Brush,** Hull Superintendent.

**F. M. Scotton,** Mechanical Superintendent.

**REPAIR FACILITIES:** Complete for ship, engine and machinery repairs.

**BUILDING BERTHS:** Three, 800 foot ship.

**DRY DOCKS:** No. 1—Steel floating dock 626' over all.

No. 2—Steel floating dock, 162' over all.

*Est. 58 Years*

# Thomas B. Banner Boiler & Welding Company

John L. Banner

Plate Work

Boiler Repairing

Ship Carpenters

Dock Repairing

Machinists

Electric and

Acetylene Welding

Engineer's Supplies

Day Phones { Superior 7269  
Delaware 1528

Night Phones { Buckingham 2821  
Palisade 1754

**Chicago, Ill.**  
**15 West Ohio Street**

**ASHTABULA, OHIO, PLANT**

Leonard Feldmeyer, Yard Manager; Ed. MacKenzie, Superintendent.

REPAIR FACILITIES: Complete for ship, engine and machinery repairs.

BUILDING BERTHS: One; 800 foot ship.

DRY DOCK: Concrete dock, 650' over all.

**DETROIT, MICH., PLANT**

W. Roemer, Manager.

REPAIR FACILITIES: Complete for engine and machinery repairs.

**The Great Lakes Towing Co.**

General Office

1800 Terminal Tower, Cleveland, O.

Yard

Foot Jefferson St., Cleveland, O.

C. W. Willett, President.

H. N. Hobart, Vice President.

M. H. Wardwell, Secretary and Treasurer.

REPAIR FACILITIES: Repairs on either steel or wooden tugs and other small craft either steel or wood hulls.

DRY DOCKS: Floating dry dock 80 feet long, with minimum clearance between the towers of 33 feet.

LIMITING CONDITIONS: Can dock tugs and small craft not exceeding the dimensions given above and drawing not more than 12 feet of water.

**Kingston Shipbuilding Co., Ltd.**

KINGSTON, ONTARIO, PLANT

REPAIR FACILITIES: Fully equipped for all kinds of repairs to steel or wooden vessels—engines, boilers and auxiliaries.

BUILDING BERTHS: Two.

DRY DOCK: No. 1—379' 6" by 55' 0" at entrance.

LIMITING CONDITIONS: 16' 0" draught.

**HARRY SAEFKE**

Phone: Lakeside 1205

**AL NIENOW**

Phone: Lakeside 5946

OFFICE PHONE: MARQUETTE 3488

**SAEFKE & NIENOW**

POWER

ENGINEERS SUPPLIES

MARINE REPAIRS OF ALL KINDS

Pipes, Valves and Fittings

Packings of All Kinds

Machine Shop in

Connection

830 North Fourth Street, MILWAUKEE, WIS.

**Manitowoc Ship Building Co.**

Manitowoc, Wis.

Charles C. West, President.  
 A. P. Rankin, 1st Vice President.  
 W. L. Wallace, 2nd Vice President.  
 A. L. Pitz, 3rd Vice President.  
 J. E. Thiell, 4th Vice President and Secretary.  
 A. L. Nash, Treasurer.  
 J. A. Egan, Asst. Treasurer.  
 H. A. Meyer, Purchasing Agent.  
 A. P. Rankin, Chief Engineer.  
 A. L. Pitz, General Superintendent.  
 J. D. West, Machine Shop Superintendent.  
 J. J. Norris, Boiler Works Superintendent.

REPAIR FACILITIES: Full facilities for boiler, machinery and hull repairs.

BUILDING BERTHS: Three; 600 feet.

DRY DOCKS: No. 1—Floating dock 650' x 70'.

GENERAL INFORMATION: Maintain complete facilities for all classes of ship repairs, also furnishing of stores and supplies.

**Marine Iron & Ship Building Co.**

Foot 11th Ave., West Duluth, Minn.

A. W. Leraan, President.  
 A. W. King, Vice President.  
 John Geistman, Secretary-Treasurer and General Manager.  
 A. Halvorson, Naval Architect.  
 Swan Larson, Superintendent.  
 L. A. Willman, Purchasing Agent.

REPAIR FACILITIES: Hull and engine.  
 BUILDING BERTHS: Two; 300 feet.  
 DRY DOCK: Floating, 1500 ton.

**A. B. McLean & Sons**

Brock Street Dock

Sault Ste. Marie, Ontario

Capt. R. A. and John McLean, Managers.

REPAIR FACILITIES: Machine shop. Air compressors. Electric arc welding outfit, etc. for

**MARINERS' MANUAL OF THE GREAT LAKES**

By Charles Richter

The first authoritative book containing complete information on navigation, loading and ship management, published exclusively for ship masters, operating officers, seamen and those anticipating increase in grade.

**CONTENTS****PART I: WHAT AN OFFICER SHOULD KNOW:** The watch officer . . . Bearings

. . . Speed of ship . . . Pelorus . . . Symbols and signals . . . Tonnage . . . Loading . . . Stress . . . Strain . . . Gravity . . . Stability . . . Load limit requirements.

**PART II: THE RIVERS:** St. Marys . . .

St. Clair . . . Lake St. Clair . . . Detroit . . . Buoyage . . . Vessel lights . . . Lifeboats . . . Life rafts.

**PART III: THE COMPASS:** Magnetic liquid compass . . . Dry compass . . . Variation . . . Heeling error . . . Compensation.

**PART IV: QUESTIONS AND ANSWERS:** 500 questions with answers, invaluable in studying to become a deck officer . . . A quick and simple means of determining proper procedure under all conditions.

MARINERS' MANUAL OF THE GREAT LAKES: 192 pages, 22 illustrations, 12 tables; 6 x 9 inches, cloth bound. \$5 post-paid (plus 15c for compulsory 3% state sales tax for copies delivered in Ohio).

*Order Your Copy Today*

**THE PENTON PUBLISHING CO.**  
 Book Department  
 Cleveland, Ohio

making complete repairs to hulls, engines; boilers and auxiliary machinery.

**DRY DOCK:** Floating dry dock. Length over all 112'. Width of entrance at top 49' 6". Depth over blocks 13'.

### Midland Shipyards, Ltd.

Midland, Ontario

**R. M. Wolvin**, President.

**John S. Leitch**, Vice President.

**Geo. L. Cole**, Secretary.

**J. M. McPhorson**, Treasurer.

**Howard Johnson**, General Manager.

**Arthur B. Clark**, Chief Engineer.

**REPAIR FACILITIES:** Fully equipped for boiler or engine repairs.

**BUILDING BERTHS:** One at 650' or two at 265'.

### Port Arthur Shipbuilding Co., Ltd.

Port Arthur, Ont., Can.

**R. M. Wolvin**, President.

**J. S. Leitch**, Vice President.

**G. F. McDougall**, Manager and Secretary-Treasurer.

**L. E. Tornroos**, Naval Architect and Chief Engineer.

**H. W. Walton**, Shipyard Superintendent.

**REPAIR FACILITIES:** Complete facilities for repairs to hulls, engines, boilers and auxiliaries.

**BUILDING BERTHS:** Two, 650' long.

**DRY DOCK:** One 700' long, 98' wide. Water over sill at normal lake level 16'.

### Sturgeon Bay Shipbuilding &

**Dry Dock Co.**

Sturgeon Bay, Wis.

**Capt. John Roen**, President.

**William J. Wolter**, Secretary and Treasurer.

**C. R. Christianson**, General Superintendent.

## Sidney E. Smith

*Marine Surveying and Consulting*  
Marine Equipment

Post's Motor Marine Babbitt  
O. C. Keckley Regulating Valves  
Patented Swing Bolt Stuffing  
Box Water Gauge Fixtures and Other  
Specialties, Write for Catalog.  
Exclusive Manufacturers' Agent  
Oldman Patented Fairleaders  
Exclusive Rights of Hynd's Patented  
Bridge Walls

708 Dun Building Buffalo, N. Y.  
Washington 8732

## Diesel Oils

*all specifications*

## Bunker A, B & C

By Lighter or at Dock  
Ecorse, Michigan

*Enquiries solicited for all  
Ports on the Great Lakes*

## Fuel Oil Corp.

Phone: CHerry 3880

Night: Vinewood 2-0240 or 2-9169

Detroit, Michigan



Walter W. Haertel, Naval Architect.

BUILDING BERTHS: Three.

DRY DOCKS: No. 1—100.

No. 2—70.

No. 3—200.

MARINE RAILWAY: 100 ft.

### Toledo Shipbuilding Co. Inc.

General Offices,  
2245-2357 Front St.  
Toledo, O.

F. B. Hufnagel, Chairman of Board.

J. Burton Ayers, President and Treasurer.

M. M. Wilkinson, Vice President and General Manager.

C. V. Romstadt, Secretary and Assistant Treasurer.

J. F. Rawlinson, General Superintendent.

W. F. Powers, Naval Architect.

J. O. Crafts, Chief Engineer.

C. J. Woelfle, Chief Draftsman, Hull Department.

**REPAIR FACILITIES:** Complete facilities for building and repairing all kinds of steel vessels, engines, boilers and auxiliary machinery including machine shop, boiler shop, sheet metal shop, electric shop, pipe shop, joiner shop, pattern shop, foundry, gantry cranes, locomotive cranes, crawler cranes, shear legs, etc.

**FLOATING REPAIR EQUIPMENT:** Launch and work scows equipped with air compressor, electric welding equipment, and other equipment as required.

**BUILDING BERTHS:** Three: capacity for vessels up to 650' in length.

**DRY DOCKS:** No. 1—Concrete with steel gate; length 690', width 96', depth over sill 14' 6".  
No. 2—Wood, with steel gate; length 560', width 80', depth over sill 13' 0".

**GENERAL:** Carries complete stock of material and parts required in ordinary repairs or replacements.

## The Passivation Products Co.

1311 N.B.C. Bldg.  
Cleveland, Ohio

RESINEX  
PROTECTIVE COATINGS  
PASSIVITE  
BOILER TREATMENT  
TARPO  
CANVAS PRESERVATIVE

*Agents in All Lake Ports*

Main 5968

Cleveland Steam Gauge Co. Agents



### DURABLA MANUFACTURING COMPANY

114 Liberty Street, N. Y.

Re-valve with DURABLA Compressor and Pump Valves. Standard equipment with Leading Pump & Engine Builders.

### THE CLEVELAND STEAM GAUGE COMPANY

1100 West 9th  
Cleveland, Ohio

MA. 5838  
LA. 2050

RUF HYDRAULIC WHISTLE BLOWER  
PUMP — ENGINE — MACHINE  
REPAIRS OF ALL KINDS

Agents for: Durabla Pump Valves—Ernst  
Water Columns — Crosby Safety Valves

## Port Directory and Where-to-Buy

### ASHTABULA, O.

**Boilers**—GEARY BOILER WORKS, Welding and Repairing Marine and Stationary boilers. Phone: 5801 and 5101.

**Electrical Service**—RIVERSIDE ELECTRIC MOTOR SERVICE, E. O. Roivas. Prompt and complete electrical service, armature rewinding. Day and night. Phone: 1881.

**General Machine Work**—McKINNON IRON WORKS CO., 493 E. 5th St. Electric Welding, Boiler Work, Castings—Deck Engines. A-1 parts for Chase Deck Engines. Gauge Glass Fixtures.

**Laundry**—ELECTRIC LAUNDRY CO., THE, 1407 W. 6th St. Launderers, Carpet Cleaners, Dry Cleaners. 50 years of high grade service to The Marine Trade.

**Marine Newsstand**—CHRISTENSEN'S, 1010 West 5th St., Papers, Magazines, Smokers' Supplies, Confectionery, Sodas and Sundaes, Kodak Films.

**Meats**—RENNICK, TOM J., 1104 West 5th St. High grade Meats and Poultry. Day and night delivery service to Marine trade. Phone 5338, Residence 5354.

**Sheet Metal Work**—CARLSON SHEET METAL WORKS, 1108 W. 5th St. Marine Work given special attention. Breaching, Smoke Stacks. Originators of "Carlson Sectional Boiler Covering." Established 1907.

### BUFFALO, N. Y.

**Attorneys at Law**—BROWN, ELY & RICHARDS. Attorneys at Law, 1317 Chamber of Commerce. Telephone, WASHINGTON 5961.

## CARLSON SHEET METAL WORKS

Marine work given special attention

Breachings Smoke Stacks

Electric Welded Stainless  
Steel Sinks

Originators of "Carlson  
Sectional Boiler Covering"

1108 W. 5th Street Ashtabula, O.

*Established 1907*

## CHRISTENSEN'S MARINE NEWSSTAND

*Established 1894*

Stationery, Confectionery, Books, Papers,  
Periodicals, Smokers' Supplies  
Films Sold & Developed

1010 West 5th St. Ashtabula Harbor, O.

## E. H. READING



PROPELLER WHEELS  
CASTINGS  
MACHINERY REPAIRS

Washington 5361—178-180 OHIO STREET, BUFFALO, N. Y.

**BUFFALO, N. Y. (continued)**

**Boilers**—NICHOLSON & HALL BOILER & WELDING CORP. Office—174 Ohio St. Boilers, Tanks and Stacks Repaired. All kinds of Electric Welding. Marine work a specialty. Phone: Washington 3500.

**Boilers**—OLDMAN BOILER WORKS, INC., 32-42 Illinois St. Marine work a specialty. Electric welding. Boiler Repairing, day or night. Phone: CLEVELAND 0932; Night Phones: ABBOTT 0418-J, DELAWARE 5903, or DELAWARE 2917.

**Boilers**—TASHENBERG BROS. BOILER WORKS, 43-47 Illinois St. Office phone: CLEVELAND 1307. Marine work our specialty. Electric Welding and Air Plant. Day and night service.

**Groceries**—GUNN, P. J., 54-60 Michigan Ave., Corner Elk St. Groceries and Marine Supplies. Phone WASHINGTON 1189. Night Phone TRIANGLE 0779.

**Meats**—GEHM, JOHN, 1-3-4-5-7 Elk St. Dealer in choice meats of all kinds. Phones: BELL 1204; SENeca 21134.

**Packing**—ANCHOR PACKING CO., THE, 67 Andrews Bldg. Phone: Seneca 5258.

**Ranges (Galley)**—RUSSELL & WATSON, INC., 94-96 Pearl St. Phone: Wash. 0585.

**Repairs**—FORD BROS., INC., 23-29 Illinois St. General Machinists, Cylinders and Valves bored in position; Ice Machine Repairing; Calibrating Gauges. Phone: CLEVELAND 4677. Night Phones: Williamsville 457-J, TRIANGLE 4336, PARKside 7443.

**Repairs**—MOLLENBERG-BETZ MACHINE CO., INC., 20-26 Henry St. General Repairs of Engines, Pumps and Refrigerating Machinery. Ammonia fittings carried in stock. Cylinders and valves bored in position. Phones CLEVELAND 7138 and 7139.

**Repairs**—READING, E. H., 178-180 Ohio St. Marine Repairs and Propeller Wheels Our Specialty. Brass and Iron Castings. Phone WASHINGTON 5361.

## Northern Engineering & Supply Company Limited

We have experienced men and Necessary Plant equipment to do all kinds of High Class Marine Work, Welding and Cutting, Foundry Work, Sheet Metal Work, Pipe, Valves and Fittings. Full Line of Engineering and Marine Supplies.

### GIVE US A TRIAL

Phones: { 650 S  
3826 S      Night Phone: S. 1833

NORTH ST. FORT WILLIAM, ONT., CAN.

## McKINNON IRON WORKS Co.

*Established 1880*

Electric Welding    Boiler Work    Forge Work  
Machine Work      Castings      Deck Engines  
Remote control for Deck Engines  
All Parts for Chase Deck Engines  
Gauge Glass Fixtures

ASHTABULA

OHIO

E. O. Roivas

Phone 1881

**ELECTRICAL**  
**TROUBLE—SERVICE**  
**—ASHTABULA—**

RIVERSIDE ELECTRIC MOTOR SERVICE

**BUFFALO, N. Y. (continued)**

**Shipbuilders**—AMERICAN SHIP BUILDING CO., THE. Buffalo Dry Dock Plant: 191-301 Ganson St. Telephones: CLEVELAND 4055 and 4056. Buffalo Lake Erie Plant: Ft. of So. Michigan Ave. Telephone: WASHINGTON 0602. Hull, engine and boiler repairs; dry-docking; launch service.

**Ship Chandlers**—UPSON-WALTON COMPANY, THE, 182 Ohio St. Telephone: CLEVELAND 4027. Ship Chandlery. Wire and Manila Rope. Tarpaulins, Tackle Blocks, Meats and Groceries, Engineer's Supplies.

**Supplies**—SIDNEY E. SMITH, 708 Dun Bldg. Telephone: WASHINGTON 8732. Marine Equipment. Marine Surveying & Consulting.

**CHICAGO, ILL.**

**Boiler Compound**—NATIONAL ALUMINATE CORP., 6232 W. 66th Place. Scientific Treatment of Boiler Feedwater.

**Boiler Repairing**—BANNER, THOMAS B., BOILER & WELDING CO., 15 West Ohio St.

**Boiler Treatment**—DEARBORN CHEMICAL CO., 310 S. Michigan Ave. Rust Preventive. Scientific water treatment.

**Packing**—ANCHOR PACKING CO., THE, 200 E. Illinois St. Phone: Superior 5249.

**Packing**—CRANE PACKING COMPANY, 1800 Cuyler Ave. Phone: BUCKINGHAM 1800.

**Provisions**—BEN CHALEM, 514 Rush St. Meats, Groceries, Vegetables, Fruits, Ship Supplies and Laundry. Phones: DELAWARE 8786-8787. Night Phone: DELAWARE 2160.

**Rubber Goods**—QUAKER RUBBER CORP., 2035 S. Michigan Ave. Phone: Victory 0616. Also P. P. Rod Packing, Ebonite Sheet Packing, Ebonite Stop Valve Packing and Pump Valves. Hose for all purposes.

**Shipbuilders**—AMERICAN SHIP BUILDING CO., THE. Chicago Plant: 101st St. and Calumet River. Telephones: REGENT 2000 and 2001. Hull, engine and boiler repairs; drydocking; launch service.

17th Successful Year

**S. JURECKY****CALUMET MARINE SUPPLY**

3444 Michigan Ave. All Phones 802

DAY OR NIGHT

**INDIANA HARBOR, IND.***We Supply Vessels at Buffington*

Agents for Vacuum and National Oils

**GEARY BOILER WORKS  
AND ELECTRIC WELDING**

Welding and Repairing Marine and Stationary Boilers a Specialty. Results tested and approved by U.S. Inspectors.

**LICENSED ELECTRIC WELDERS** Phone: 6301-5101  
**ASHTABULA HARBOR, O.**

Cleveland 7188

Cleveland 7189

**MOLLENBERG-BETZ MACHINE CO., Inc.**  
**GENERAL MACHINISTS & REFRIGERATING ENGINEERS**  
General Repairs of Engines, Pumps and Refrigerating Machinery. Cylinders and valves bored in position. Ammonia and Fittings carried in stock. *Distributors for FRICK CO. Refrigerating Machines.***20-26 Henry St.****Buffalo, N. Y.**

**CHICAGO, ILL. (continued)**

- Supplies**—UPSON-WALTON COMPANY, THE, 737 West Jackson Blvd., Telephone: HAYmarket 6380. Ship Chandlery. Wire and Manila Rope, Tackle Blocks and Tarpaulins.
- Valves**—KECKLEY, O. C., CO., 400 West Madison St. Steam Traps, Temperature and Pump Regulators, Blow-off Valves, Water Gauges, Gauge Cocks, and Strainers.

**CLEVELAND, O.**

- Architects (Marine)**—SMITH BROTHERS, 956 Rockefeller Bldg., Marine Architects, Surveyors and Appraisers.
- Bank**—CENTRAL NATIONAL BANK, 308 Euclid Ave.
- Bank**—SOCIETY FOR SAVINGS, Public Square.
- Boiler Compound**—PASSIVATION PRODUCTS CO., THE, 1311 N. B. C. Bldg. Passivation products obtainable at all ports.
- Books**—PENTON PUBLISHING CO., THE (Book-Department), Penton Bldg., Lakeside and W. 3rd St. We can supply any book in print.
- Chains**—NATIONAL MALLEABLE & STEEL CASTINGS CO., 10600 Quincy Ave., Cleveland, O.
- Coal**—PITTSBURGH COAL CO., Terminal Tower. Best steamboat coal, 24 hours service at all Lake Erie Ports. Fuel Lighter at Cleveland.
- Dry Goods**—FRIES & SCHUELE, THE, West 25th St. Beddings, Linens, Curtains and Floor Coverings. Phone: Atlantic 1100.
- Furniture (Steamboat)**—LEOPOLD BROTHERS FURNITURE CO., Lorain and W. 30th St. Phone: MELrose 2324.
- Gauges**—CLEVELAND STEAM GAUGE CO., 1100 W. 9th St. Gauge manufacturers. We repair gauges and valves of every description.
- Hatch Fasteners**—MULHOLLAND HATCH FASTENER CO., THE, 1276 West 3rd St. Manufacturer of Simplex Security Mulholland Fasteners.
- Lubricants**—STANDARD OIL COMPANY OF OHIO, THE, National City Bldg., "SOHIO" Marine Lubricants.

**PACKINGS OF MERIT**

ALLPAX  
U. S. METAL

BELMONT  
"V" PILOT

**JNO. J. DISCH CO.**

*Main Office and Factory*

6109 Franklin Blvd. Cleveland

Phone WOodbine 6717

Day or Night

**AMERCOTE**

In almost universal and constantly repeating use Amercote has proven its excellence and economy, as a rust preventing coating, particularly adaptable for hulls.

**THE AMERICAN OIL AND PAINT COMPANY**  
9915 Harvard Ave., Cleveland, Ohio

**LEOPOLD BROTHERS**  
**Furniture Company**

Furniture—Carpets  
Linoleums—Mattresses  
Radios—Springs

*Prompt Delivery Service*

Lorain at West 30 St. Cleveland, Ohio  
Telephone: MELrose 2324

**CLEVELAND, O. (continued)**

- Packing**—ANCHOR PACKING CO., THE, 525 Rockefeller Bldg. Phone: PRospect 2748.
- Packing**—CRANE PACKING CO., Fred M. Harmon, 380 Rockefeller Bldg. Phone: PRospect 5543.
- Packing**—DISCH, JNO. J., CO., 6109 Franklin Blvd. Phone: WOODbine 6717; Day or night.
- Packing**—FRANCE PACKING CO., 407 The Arcade. Phone: MAIn 5687.
- Paints**—AMERICAN OIL & PAINT CO., 9915 Harvard Ave. The use of Americote by many Great Lakes boat companies has proven it to be the most economical hull coating sold.
- Paints (Marine)** — FERBERT - SCHORNDORFER CO., 12815 Elmwood Ave.
- Penetrol**—FLOOD CO., THE, 6217 Carnegie Ave., Manufacturers of Penetrol.
- Paints**—SHERWIN-WILLIAMS CO., THE, 601 Canal Rd., N. W. A full line of high quality Marine Paints, Varnishes and Enamels.
- Provisions**—HAUSHEER & SONS CO., THE, 1220-1228 W. 11th St. Meats, groceries, vegetables, fruits, ship supplies and Laundry. Phone: MAIn 1580. Night Phone: CLearwater 6858.
- Ship Repairs**—RUD MACHINE CO., THE, 1036 W. 11th St. Hull, Boiler and Machine Work. Phone: CHerry 3883-3884.
- Shipbuilders**—AMERICAN SHIP BUILDING CO., THE. Main Office: 1410 Terminal Tower. Cleveland Plant: Foot of West 54th St., N. W. Telephone: WOODbine 2280. Hull, engine and boiler construction and repairs; dry-docking; launch service.
- Supplies**—PATTISON, W. M., SUPPLY CO., THE, 777 Rockwell Ave. Mooring Lines, Valves, Marine Scaling Hammers, Drills, Grinders, Boat Falls, Signal Halyards and Rat Lines. Telephone: MAIn 7320.
- Supplies**—THOMSON, J. & A., Co., 1228-1232 W. 11th St. Marine Engineers' Supplies. Phone: MAIn 0077; Night: AAcademy 2260.
- Supplies**—UPSON-WALTON CO., THE, 1294-1310 W. 11th St.

**MARINE**

**Paints—Varnishes—Enamels  
for every requirement**

**THE FERBERT-SCHORNDORFER CO.**  
Cleveland, O.

Warehouse stock Upson-Walton Co.  
Buffalo

**THE RUD MACHINE COMPANY**

1036 W. 11th St.  
CLEVELAND, OHIO

All Hull repairs above water line  
Boiler and machine work.  
Welding boat.

Telephone: CHerry 3883-3884

**CARL H. MEISER**

Marine Meats and Groceries  
Steamboat, Hotel, Restaurant and Cafeteria  
Supplies

**DAY and NIGHT LAUNCH DELIVERY**  
818 PEACH STREET 23-637  
ERIE, PA. Phone 23-638  
Residence Night Calls 65-110

**CLEVELAND, O. (continued)**

**Tarpaulins**—DANIELS, C. R., Inc., 1327 St. Clair Ave. Tarpaulins, Boat Covers, Marine Canvas work. Manufacturers of everything of Canvas. Phone: MAIn 2638.

**Water Gages**—RELIANCE GAUGE COLUMN CO., 5902 Carnegie Ave. Water Gauges and Boiler Safety Devices.

**DETROIT, MICH.**

**Fuel Oil**—FUEL OIL CORPORATION, Ecorse, Michigan. Phone: CHerry 3880. Night Phone: Vineyard 2-0240 or 2-9169.

**Packing**—ANCHOR PACKING CO., THE, 169 W. Jefferson Ave. Phone: RANdolph 4975.

**Packing**—CRANE PACKING CO., 1720 12th St., Phone CADillac 2323.

**Supplies**—EDWARDS, H. D., & CO., 175 E. Larned St., Manila Rope, Wire Rope, Logs, etc. Phone: RANdolph 7311.

**Tarpaulins**—DANIELS, C. R., INC., 2383 W. Fort St. Tarpaulins, Hatch cloths, Boat Covers, Marine Canvas Work. Prompt service. Phone: LAfayette 3044.

**ECORSE-DETROIT, MICH.**

**Fuel**—NICHOLSON TERMINAL & DOCK CO. Quality Coal—Fast Fueling. Phone: VINewood 2-430.

**ELGIN, ILL.**

**Deconcentrators**—ELGIN SOFTENER CORP. Mud, sludge and scale forming impurities removed from boilers by Deconcentrators. Chemical treatment to prevent scale, corrosion and embrittlement.

**ELYRIA, OHIO**

**Tools**—RIDGE TOOL CO., THE.

**Quaker Marine Products***Used the world over*

P. P. P. ROD PACKING  
EBONITE SHEET PACKING  
EBONITE STOP VALVE PACKING  
PUMP VALVES, GASKETS,  
RUBBER MATS and HOSE

*Dealers in every Lake Port***QUAKER RUBBER CORPORATION****MAIN OFFICE—PHILADELPHIA**

**BRANCH—2035 S. Michigan Ave., Chicago**  
Phone: VICtory 0616

Telephone, 158.

**CRISP LAUNDRY & DRY CLEANING CO.**

The best of service day and night,  
ON LOCK WALLS.

**Sault Ste. Marie, Michigan**
**JAMES MURPHY COAL COMPANY**  
**Steamboat Coal Fueling**  
**Facilities**

Splint & Elkhorn Steam Coals  
KAMINISTQUIA RIVER, FORT WILLIAM, ONT.  
Duck Phone Office Phones  
South 1744 South 8, 84 & 88  
Night Calls—South 1579, South 19

**ERIE, PA.**

**Supplies**—MEISER, CARL H., 818 Peach St. Marine Meats and Groceries. Day and Night Launch Delivery. Phones: 23-637 and 23-638. Residence Night Calls: 65-110.

**ESCANABA, MICH.**

**Provisions**—STEPHENSON, N. T. City & Marine Store 301 Ludington Street, Groceries, Meats, Vegetables, Ice & Laundry. Phone: 1054. Launch Delivery.

**FORT WILLIAM, ONT., CANADA**

**Coal**—MURPHY, JAMES, COAL CO. Kaministiquia River.

**Repairs**—NORTHERN ENGINEERING & SUPPLY CO., LTD., North St. Full line of Engineering and Marine Supplies.

**INDIANA HARBOR, IND.**

**Marine Supplies**—CALUMET MARINE SUPPLY, 3444 Michigan Ave. All Phones: 802.

**INDIANAPOLIS, IND.**

**Pumps**—DEAN BROTHERS PUMPS, INC., 323 W. Tenth St.

**LORAIN, O.**

**Provisions**—McHENRY, CHAS. N., 339-341 E. Erie Ave. City and Marine Meat Market and Grocery. Phone: 8134, day and night.

**Shipbuilders**—AMERICAN SHIP BUILDING CO., THE. Lorain Plant: Colorado Ave. Telephone: Lorain 8112. Hull, engine and boiler construction and repairs; dry-docking; launch service.

THE *Fries* and *Schuele*  
COMPANY

*Foremost Outfitters on the Great Lakes*

*Bedding, Floor Covering, Linens  
and Galley Supplies  
Wholesale Prices*

West 25th St. Cleveland  
PProspect 1100

H. D. EDWARDS & CO.  
EST. 1855

VESSEL AND ENGINEERS SUPPLIES  
PROMPT DELIVERY

175 E. Larned St. Randolph 7311  
DETROIT

**PENETROL**

REG. U. S. PAT. OFF.  
THE FLOOD COMPANY  
6217 Carnegie Ave.  
CLEVELAND, OHIO



**MANITOWOC, WIS.**

**Shipbuilders** — MANITOWOC SHIPBUILDING COMPANY. Designers and builders. Complete Dry Docking and repair facilities for repairing Hulls, Boilers and Machinery. Full line of Oils, Grease, Packing and other Engine Room Supplies.

**Supplies (Captains' and Engineers')**—STANGEL, J. J., HARDWARE CO., Eighth at Quay. Refrigeration Service. Telephone 3303.

**MILWAUKEE, WIS.**

**Engineers' Supplies**—SAEFKE & NIENOW, 830 North Fourth St. Pipes, Valves and Fittings; Packings and Marine Supplies of all kinds. Phone: MARquette 3488.

**Provisions**—GEO. B. DALY MARINE MARKET, 502 S. Second St., Meats and Groceries. Phone: DALy 6910, DALy 6911. Night phone: ORchard 8496M.

**NEW YORK, N. Y.**

**Pump Valve Service**—DURABLA MANUFACTURING CO., 114 Liberty St., New York, N. Y. The Strongest, Lightest, Most Efficient Valve Made.

**PITTSBURGH, PA.**

**Fuel**—KOPPERS COAL CO., Koppers Bldg., Coal.

**PORT HURON, MICH.**

**Fuel**—PORT HURON COAL & DOCK CO., Bunker Coal, accurately weighed in Hoppers suspended on Fairbanks automatic scales. Fast fueling, 24 hours per day. Best West Virginia Coals. Located on St. Clair River beside International Tunnel.

**Paint Canvas**—ROBESON PRESERVO CO.

## ROBERTSON'S

---

## LAUNDRY



*Laundry and Zoric  
Dry Cleaning at the  
"Soo" Locks*

CHOSEN AS THE OUTSTANDING MARINE LAUNDRY BY LEADING TRADE JOURNAL "AMERICAN LAUNDRY DIGEST". 1941

**PRICE BOILER & WELDING CO.**

318 Water St.

Toledo, Ohio

*Norman Edgar, Marine Supt.*

**Boiler and Hull Repairs  
Certified Welders, Floating Equipment**

Phones: Day—Adams 5294;  
Night—Taylor 5619; Jordan 3859

# Beeple's

## Better Foods

*Wholesale Steamship Supplies*

Marine Phone

City Phone

ADams 3717

Main 4181

36 No. Superior St.

Toledo, Ohio

**SANDUSKY, O.**

**Repairs**—KLOTZ MACHINE CO., THE, 316-318 West Water St., Machinists-Iron-Brass-Aluminum. Founders, special attention given to marine repairs. Telephone: MAin 36. Night Phone: MAin 1683-J.

**SARNIA, ONT., CANADA**

**Repairs** — GOODISON, JOHN THRESHER CO., LTD. All kinds of repairing, night and day. Phone: 2700. Night: 3142.

**SAULT STE. MARIE, MICH.**

**Laundry**—CRISP LAUNDRY AND DRY CLEANING CO., 413-21 West Portage Ave. The best of service day or night.

**Laundry**—ROBERTSON'S, at the Soo Locks. Service day or night. Special service to docking steamers. Four-hour service, if required. Telephone: 1325.

**SCHENECTADY, N. Y.**

**Propulsion and Electric Auxiliaries** — GENERAL ELECTRIC COMPANY, 1 River Road. Geared-turbine, turbine-electric and diesel-electric propulsion; motors and controls. See Inside Front Cover for Great Lakes facilities.

**SOUTH CHICAGO, ILL.**

**Repairs**—CALUMET SHIP YARD & DRY DOCK CO., 94th Street and Calumet River. General Ship Repairs. Boiler Repairing and Electric Welding. General Machine Work and Electrical Repairing.

**Supplies**—BRICKETT & GLASS, 10034 Indianapolis Ave. Supplies for Mates and Engineers. Also Sheet Metal Work. Day Phone: So. Chi. 0359; Night Phone: So. Chi. 4061.

**ST. LOUIS, MO.**

**Rope, Manila** — ST. LOUIS CORDAGE MILLS, Eleventh & Lafayette.

**SUPERIOR, WIS.**

**Shipbuilders**—AMERICAN SHIP BUILDING CO., THE. Superior Plant: Clough Ave. and Third St. Telephones; from Superior, call 169; from Duluth, call Melrose 82. Hull, engine and boiler repairs; dry-docking; launch service.

**TOLEDO, O.**

**Boiler Repairs**—PRICE BOILER & WELDING CO., 918 Water St., Certified Welding. Norman Edgar, Marine Supt. Phone: ADams 5294; Night Phone: TAYlor 5619, JORDan 3859.

**Laundry (Marine)**—PHEASANT MARINE LAUNDRY, 1145 Miami St. We serve to serve again. Phones: Day, TAYlor 1329; Night, ADams 5474, GARfield 9327; or LAWndale 9451.

**Lubricants**—FISKE BROTHERS REFINING CO., 1500 Oakdale Ave., Telephone: TAYlor 2491.

**Manitowoc Shipbuilding Company**

Manitowoc

Wisconsin

Telephone 3323

Designers and builders of all types of Steam, Diesel and Diesel Electric propelled equipment, as follows:

Oil Tankers  
Freight Vessels  
Passenger Vessels  
Self-Unloaders  
Car-Ferries  
Suction Dredges  
Pleasure Yachts  
Fire Boats  
Marine Engines

Dipper Dredges  
Sandsuckers  
Dump Scows  
Barges  
Tugs  
Car Floats  
Pontoons  
Boilers  
Marine Aux.  
equipment

Complete docking and repair facilities

**TOLEDO, O. (continued)**

**Meats**—BEEGLE, H. F., MEAT CO., 36-38 Superior St. Groceries and Vegetables. Phone: MAin 4181.

**Shipbuilders**—AMERICAN SHIP BUILDING CO., THE. Toledo Plant: 902-910 Water St. Telephone ADams 6115. Hull, engine and boiler repairs; launch service.

**Shipbuilders**—TOLEDO SHIPBUILDING CO., INC. Main Offices and Plant 2245-2537 Front St. Complete dry docking and repair facilities, hulls, engines, boilers and auxiliaries. Telephone: PONTiac 1501-1502-1503-1504.

**Supplies (Captains' and Engineers')**—HARDY & DISCHINGER CO., THE, 121-123 N. St. Clair St. Delivery Boat I-No-U. Phone MAin 1124, WAbridge 0696, WAbridge 1309, FOrest 3719, LAwndale 6972. Delivery Agents for Oil Companies.

**Welding and Boat Building**—HANSEN, HANS, WELDING CO., 318 Washington St. Certified Welders, Electric and Acetylene. Tank Builders. Smokestack and Boiler Repairs. Floating Equipment. Phone: ADams 4015. Night Phone: FOrest 2422.

**TROIS RIVIERES, P. Q., CANADA**

**Machine Shop**—DESROBERTS AIME, 309 St. George Street. General Ship Repairs. Light and heavy work. Phone: 1081; Night: 1876.

**HANS BUILDERS OF STEEL BOATS  
HANSEN WELDING COMPANY  
CERTIFIED WELDERS  
ELECTRIC AND ACETYLENE WELDING**

Builders of Tanks, Smokestacks and Boiler Repairing. Floating Equipment

Shop at  
Shop Phone ADams 4015      318 WASHINGTON ST.  
Night Phone FOrest 2422      TOLEDO, OHIO

**NOTES**

164

# NOTES

165

# NOTES

166

# NOTES

167

# NOTES

## Index to Advertisers

American Oil & Paint Co., The.....	151
American Shipbuilding Co.....	148, 156, 161, 162, Inside Back Cover
Anchor Packing Co., The.....	129, 146, 148, 154
Banner, Thomas B., Boiler & Welding Co.....	135
Beegle, H. F., Meat Co.....	159
Brickett & Glass.....	160
Brown, Ely & Richards.....	144
Calumet Marine Supply Co.....	149
Calumet Shipyard & Dry Dock Co.....	160
Carlson Sheet Metal Works.....	145
Central National Bank of Cleveland.....	170
Chalem, Ben, Inc.....	148
Christensen's Marine Newsstand.....	145
Cleveland Steam Gauge Co.....	143
Crane Packing Co.....	20, 152, 154
Crisp Laundry & Dry Cleaning Co.....	155
Daly, Geo. B., Marine Mkt.....	158
Daniels, C. R., Inc.....	154
Dean Bros. Pumps, Inc.....	126
Dearborn Chemical Co.....	4
Des Roberts, Alma.....	162
Disch, John J., Co.....	151
Durabla Mfg. Co.....	143
Edwards, H. D., & Co.....	157
Electric Laundry Co., The.....	144
Elgin Softener Corp.....	36
Ferbert-Schorndorfer Co.....	153
Fiske Bros. Refining Co.....	6
Flood Co., The.....	157
Ford Brothers.....	146
France Packing Co.....	32
Fries & Schuele Co., The.....	157
Fuel Oil Corp.....	141
Geary Boiler Works.....	149
Gehm, John.....	146
General Electric Co.....	Inside Front Cover
Goodison, John, Thresher Co., Ltd.....	160
Gunn, P. J.....	146
Hans Hansen Welding Co.....	162
Hardy & Dischinger Co.....	162
Hausheer & Sons Co.....	152

Kearney, O. C., Co.....	14
Knuts Machine Co.....	160
Koppers Coal Co.....	8
Leopold Brothers Furniture Co.....	151
McHenry, Chas. N.....	156
McKinnon Iron Works Co., The.....	147
Manitowoc Shipbuilding Co.....	161
Meiser, Carl H.....	153
Mollenberg-Betz Machine Co.....	149
Muhlolland Hatch Fastener Co.....	150
Murphy, James, Coal Co.....	155
National Aluminate Corp.....	131
National Malleable & Steel Castings Co.....	2
Nicholson & Hall Boiler & Welding Corp.....	146
Nicholson Terminal & Dock Co.....	133
Northern Engineering & Supply Co.....	147
Osman Boiler Works, Inc.....	10
Passivation Products Co., The.....	143
Pattison, W. M. Supply Co., The.....	12
Pheasant Marine Laundry.....	161
Pittsburgh Coal Co.....	22
Port Huron Coal & Dock Co.....	38
Price Boiler & Welding Co.....	159
Quaker Rubber Corp.....	155
Reading, E. H.....	145
Rehance Gauge Column Co.....	16
Reinick, Thomas J.....	144
Ridge Tool Co.....	28
Riverside Electric Motor Service.....	147
Robertson's Laundry.....	159
Robeson Preservo Co.....	34
Rud Machine Co.....	153
Russell & Watson, Inc.....	40
St. Louis Cordage Co.....	16
Saeffe & Nienow Co.....	30
Sherwin-Williams Co., The.....	137
Smith Brothers.....	150
Smith, Sidney E.....	141
Society for Savings.....	1
Standard Oil Co., of Ohio.....	25, 26
Stangel, J. J. Hardware Co.....	158
Stephenson, N. T.....	156
Tashenberg Brothers.....	146
Thomson, J. & A.....	152
Tosedo Shipbuilding Co., Inc.....	42
Upson-Walton Co., The.....	148, 150, Back Cover



SAVE  
MONEY  
to  
HAVE  
MONEY

Provide for sudden emergencies or future needs with a Central National MARINE SAVINGS ACCOUNT. Your Captain will show you how to HAVE money by SAVING a part of every pay. Ask him about our Marine Plan.

Central National  
Bank  
of Cleveland

Member Federal Deposit Insurance Corporation

**THE  
AMERICAN SHIP BUILDING  
COMPANY**

**MAIN OFFICE**

1410 Terminal Tower

and

**CLEVELAND PLANT**

Foot of West 54th St., N. W.  
Cleveland, Ohio

**Telephone: Woodbine 2280**

**Night Telephones:**

Gate	WOodbine	2277
Machine Shop	WOodbine	2776
Plant Office	WOodbine	3089
Main Office	WOodbine	2283

**BUFFALO PLANTS**

191-301 Ganson St., Buffalo, N. Y.  
Telephones: Cleveland 4055 and 4056

Ft. of So. Michigan Ave., Buffalo, N. Y.  
Telephone: Washington 0602

**CHICAGO PLANT**

101st St. and Calumet River, Chicago, Ill.  
Telephones: Regent 2000 and 2001

**LORAIN PLANT**

Colorado Avenue, Lorain, Ohio  
Telephone: Lorain 8112

**SUPERIOR PLANT**

Clough Ave. and Third St., Superior, Wis.  
Telephones: From Superior, call 169; from  
Duluth, call Melrose 82

**TOLEDO PLANT**

902-910 Water St., Toledo, Ohio  
Telephone: Adams 6115



**Ship Chandlery**

**Vessel Outfits**

**Wire and Manila Rope—Nautical Instruments**

*The Upson-Melton Co*

**CLEVELAND--Telephone: MAin 7444**

**BUFFALO**

**CHICAGO**

**NEW YORK**

**Tel.: Cleveland 4027 Tel.: Haymarket 6380 Tel.: Whitehall 4-4960**

**PITTSBURGH—Telephone: Atlantic 2696**