

The Great Lakes RED BOOK—1949

The Great Lakes
RED BOOK
1949

A list of over 1500 Vessels of the Great Lakes, including the names of their Owners, Captains and Engineers, and of Shipbuilding and Repair Yards.

Published by

THE PENTON PUBLISHING CO.
CLEVELAND

PRICE \$1.00

2

**THE
AMERICAN SHIP BUILDING
COMPANY**

MAIN OFFICE

Foot of West 54th St., N. W.

Cleveland 2, Ohio

Telephone: WOODbine 2280

Night Telephones

Gate WOODbine 2277
Main Office WOODbine 3089

BUFFALO PLANT

191-301 Ganson St., Buffalo 3, N. Y.
Telephone: CLEVELand 4055

CHICAGO PLANT

101st St. and Calumet River, Chicago 17, Ill.
Telephone: REGent 4-2000

LORAIN PLANT

Colorado Avenue, Lorain, Ohio
Telephone: LORain 8112

TOLEDO PLANT

2245-57 Front St., Toledo 3, Ohio
Telephone: TAYlor 2475



THIS IS THE YEAR

YOUR Society for Savings is now 100 years old. 1949 completes a century of continuous safety, continuous service, continuous dividends for Society depositors. Generations of Great Lakes men have built their savings here. Like them you will receive courteous, friendly service at—

Society for Savings
FOUNDED 1849

THE PEOPLE'S BANK ON PUBLIC SQUARE

127 PUBLIC SQUARE

IN THE CITY OF CLEVELAND

MEMBER FEDERAL DEPOSIT INSURANCE CORPORATION

NACO

ANCHOR CHAIN

And

JOINING LINKS

Assure Extreme

Strength And
Durability



NATIONAL MALLEABLE AND STEEL CASTINGS COMPANY

General Offices
Cleveland, Ohio

VESSELS OF THE GREAT LAKES

with the names of
OWNER, CAPTAIN AND ENGINEER

+

Complete Port Directory
Complete Shipyard Directory
Dimensions and Capacity of
Bulk Freighters

+

1949

SEASON

+

Published by

THE PENTON PUBLISHING CO.
Penton Building
Cleveland 13, Ohio

Copyright, 1949, The Penton Publishing Co.
Cleveland, Ohio

THE W. M. PATTISON SUPPLY CO.

Immediate *Deliveries* from Stock:

EVERLASTING VALVE COMPANY

Blow-Off and Water Column Valves

JONES & LAUGHLIN STEEL CORPORATION

Galvanized Steel Mooring Lines,
Wire Rope and Slings

LUNKENHEIMER COMPANY

Bronze, Iron and Steel Valves
for Marine Service

STANLEY ELECTRIC TOOLS

Marine Scaling Hammers, Drills,
and Grinders

WALL ROPE WORKS, INC.

Harbor Tow Lines, Boat Falls,
Signal Halyards and Ratlines

Telephone: MAin 7320
777 Rockwell Ave., Cleveland, Ohio

FROM STACK TO BOTTOM

Signal Colors
Superstructure
Paints
Deck Finishes
Engine Room
Enamels
Cabin Finishes
Sherwillac Deck
Paint

Cargo Hold
Finishes
Hull Paints
Boottopping
Anti-corrosive
Bottom Paints



Complete stock of the
Highest Quality Marine
Finishes

can be obtained at Cleveland, Ohio

THE SHERWIN-WILLIAMS Co.

Dearborn

Reg. U. S. Pat. Off.

FORMULA 134 for Scale Removal in Diesels

With Formula 134, rapid and complete removal of scale deposits in engine jackets and heads, boilers, heating coils, and other vital parts can be accomplished.



Bulletin 5002 Yours for the
Asking . . . No Obligation
DEARBORN CHEMICAL CO.

Marine Dept.

205 East 42nd St., New York 17, N. Y.
General Offices: 310 S. Michigan Ave.,
Chicago 4, Ill.

INDEX TO LAKE FLEET

Vessel	Fleet No.	Vessel	Fleet No.
Abitibi	2	Ann Arbor No. 6	8
Acadian	25	Ann Arbor No. 7	8
ACD	51	Arcturus	150
Adams, Cuyler	186	Argenteuil	28
Adele	203	Arizona	77
Adriatic	150	Armstrong, Frank	150
Affleck, B. F.	152	Ashcroft	25
Agnes P.	28	Ashleaf	118
Agoming	95	Ashley, J. S.	91
Alabama	37	Ashtabula	148
Alabama	77	Aspenleaf	118
Alexander B. (see Connie M.)		Assinboia	31
Alfred J. (see Col- lingdoc)		Atomic	125
Alsocen	3	Aubrey	127
Algoma	193	Augustus, A. A.	91
Algolah II	9	Aurelia	35
Algonquin	88	Avery, Sewell	152
Algorail	3	Aviso	153
Algosco	3	Avon II	132
Algooso	3	Ayers, J. Burton	76
Algosteel	3	Aylmer	188
Algoway	3		
Alice	153	B	
Alice Vivian	208	B-7	75
Allan, Sir Hugh	135	Baker, Geo. F.	152
Allen, Justine C.	172	Ball Brothers	186
Allen M.	124	Barge 137	195
Allen, Martha E.	109	Barkhamstead	156
Alpena	127	Barrie	25
Alpena	206	Batchewana	123
Altadoc	147	Battle, James	175
Amaranth	115	Battleford	25
Amazon	127	Bayanna	12
America	77	Bayfax	44
American	5	Bayleaf	118
American	119	Bayton	169
American Ship No. 1	5	Beauharnois	105
Am-Ship	5	Beaumont Parks	179
Angeline	42	Beauvais, Ernest E.	71
Ann Arbor No. 3	8	Beaverton	25
Ann Arbor No. 5	8	Beancour	118
		Becker, John A.	120

TRETRICE



Series 500
GAUGES

GAUGES

FOR PRESSURE
AND VACUUM

REGULATORS

FOR TEMPERATURE



Series 90000
REGULATORS

THERMOMETERS

STEAM TRAPS

T. V. SORDS

Marine Representative

800 Marshall Building
CLEVELAND, OHIO



No. A12402 1/2
THERMOMETER

REPAIR SERVICE

Complete facilities for repairing
this equipment-any make. Prompt
service by delivering to W. J.
Westcott launch in Detroit River.

H.O. TRETRICE CO.

Manufacturers of Temperature Instruments
1420 W. LAFAYETTE BLVD.
DETROIT 16, MICHIGAN

Vessel	Fleet No.	Vessel	Fleet No.
Beejay	66	Budd, Ralph	195
Bellechasse	194	Buffalo	74
Bennett, Viscount	169	Buffington, E. J.	152
Berthier	28	Bug, G. L.	4
Berwind, Edward J.	85	Bulkarier	24
Bethlehem	14	Bunsen, R. W. E.	152
Blenville	112	Burke, J. P.	169
Bigwin	88	Burlington	25
Billie M.	124	Busse, Fred A.	38
Billings, Frank	91	Butler, Bessie	28
Birchton	81	Buttercup	188
Birmco	32	Butterfield	47
Black Rock	192	Byers, A. M.	164
Blanch H.	75		
Block, E. J.	91	C	
Block, Joseph	91	CBC 801 (see Petco #5)	
Block, L. E.	91	C.S.B. 2	5
Block, Philip D.	91	Cadillac	42
Blue Cross	69	Cadwell, C. W.	23
Blue River	195	Calcite	17
Bluebell	188	Calgarian	25
Boardman, John W.	89	California	77
Boeckling, G. A.	11	Calumet	150
Boland, John J.	16	Cambria	14
Bowden, W. A.	28	Campbell, J. A.	150
Bradley, Carl D.	17	Campbell, Peter G.	172
Brady	191	Camphausen, F. H.	64
Brampton	169	Canadian	25
Bricoldec	147	Canadian Holiday	26
Brighton	175	Canadiana	49
Britamette	69	Canadoc	147
Britamoco	69	Canfield, Capt. A.	191
Britamolil	69	Canopus	141
Britamolene	69	Carillon	28
Britannia	47	Carmelfjell	79
Britten, Fred A.	50	Carrollton	144
Brock, General	118	Cartierdoc	147
Brown Beaver	195	Casco	111
Brown, F. H.	169	Cassidy, James H.	
Brown, Fayette	150	(see James A. Dubbs)	
Brown, Harvey H.	150	Caulkins, Ralph S.	199
Brown, J. J. H.	19	Cayuga	25
Brush	181	Cedarton	81
Bruxelles	118	Cementkarrier	24
Bryn	195	Central	129
Buckeye	144		

WON'T WASH OFF

The best marine lubricant for bearings, gears, wire rope and sheaves. Prevents rust and corrosion.

The LUBRIPLATE Folder tells how to save money on lubricants and make equipment last longer.

LUBRIPLATE DIVISION

FISKE BROTHERS REFINING CO.
Newark, N. J. Toledo, Ohio
Dealers From Coast to Coast

LUBRIPLATE
THE MODERN LUBRICANT
THAT ARRESTS PROGRESSIVE WEAR



Vessel	Fleet No.	Vessel	Fleet No.
Charcornac	42	Cobourg	175
Challenger	138	Colbert	112
Champlain	42	Cole, Thos. F.	152
Charlevoix	34	Collier	25
Chattanooga	208	Collingdoc (nee	
Cherokee	127	Alfred J.)	147
Chicago	74	Collingwood	25
Chicago Ship No. 1.	5	Collins, E. C.	180
Chicago Ship No. 3	5	Colonel	42
Chicago Ship No. 5	5	Colorado	77
Chicago Tribune	159	Columbia	15
Chicoutimi	177	Columbia	208
Chief Wawatun	117	Comanche	127
Chippewa (nee Mary		Comet	43
Margaret)	9	Commander, J. E.	125
Chippewa	127	Commuter	138
Cite des Trois-		Coniscliffe Hall	83
Rivieres	190	Conneaut	77
City of Cheboygan	130	Conneaut	206
City of Cleveland III	53	Connecticut	77
City of Detroit III	53	Connell, Charles J.	64
City of Dover	70	Connell, Frances M.	64
City of Flint	36	Connell Jr., P. G.	64
City of Grand Rapids	41	Connelly Bros.	45
City of Hamilton	25	Connie M. (nee	
City of Kingston	25	Alexander B.)	124
City of Midland	36	Constans	184
City of Milwaukee	72	Constitution	156
City of Montreal	25	Consumers Power	16
City of Munising	130	Conway, Carle C.	85
City of Petosky	130	Coralia	21
City of Saginaw	31	Corey, W. E.	152
City of Toronto	25	Cornelius, Adam E.	16
City of Windsor	25	Cornell	152
Clark, T. J.	188	Cornett, J. A.	27
Clarke, E. A. S.	150	Coteau	194
Clayton	169	Coulby, Harry	150
Clement, Norman P.	195	Cowan, William P.	179
Clemson, D. M.	152	Cowle, John B.	76
Cleveland Ship	5	Craftsman	200
Cleveland	97	Crapo, S. T.	89
Close, Robert J.	5	Crawford, G. C.	152
Clyde	127	Crawford, W. D.	85
Clyde, Wm. G.	152	Crescent City	21
Coalfax	44	Crest	74
Coalhaven	25	Crete	150



Ferbert-Schorndorfer Company

A Division of the American-Marietta Co.

12815 Elmwood Ave.
CLEVELAND, OHIO

Vessel	Fleet No.	Vessel	Fleet No.
Croft, Harry W.	150	Doville, R. E.	86
Curran, James W.	95	Dow Chemical	16
Cushing, John F.	74	Dramis	118
		Dubbs, James A. (see James H. Cassidy)	74
D			
Daisy	153	Dubrulle, Joseph	155
Dalhousie City	140	Dunkirk	77
Dalton, Henry G.	150	Dunlap, Chas. E.	186
Damia	93	Dunn Jr., John	76
Daniels, William H.	195	Dupre Jr., Yvon	175
Dark, Samuel J.	74	Durston, J. F.	76
Davidson, James	186		
Davidson, Jas. E.	186	E	
Davin, John W.	131	Eads, James B.	195
Dearborn (see Mil- waukee)		Eaglescliffe Hall	83
Delaware	77	Eastern States	53
Delkote	56	Eaton, George L.	83
Delver	153	Edenborn, Wm.	152
Denmark	76	Edgewater (see Orion)	
Denny	162	Edmonton	25
Derrick No. 5	124	Edna G.	57
Derrick Scow No. 3	123	Edward C.	46
Derrick Scow No. 4	123	Edward K.	104
Derrick Scow No. 5	123	Edwards, C. P.	28
Deschailions	118	Edwards, George	107
Descheneaux	118	Elder	126
Detroit	198	Elba	150
Detroit Edison	16	Elgin	25
Detroitier	97	Ellwood, Isaac L.	152
Diamond Alkali	16	Elmbranch	118
Dick, Charles	137	Emery, John R.	61
Dickinson, Paul W.	74	Empire Rother (see Manicouagan)	
Dickson, Wm. B.	152	Enarco	158
Dinkey, Alva C.	152	Ericsson, John	195
Dixon	191	Erie	63
Dixon, Frank	27	Erie	107
Dompaco	160	Erland	181
Donald B.	208	Everetton	169
Donnacona	25	Ewig, Harry T.	144
Donnacona No. 2	160		
Donnacona No. 3	160	F	
Donnelly, Charles	141	Fairbairne, Sir Wm.	91
Donner, W. H.	14	Fairless, Benj. F.	152
Douglass, Edwin T.	195		

DURABLA



Pump and Compressor Valve Service

DURABLA MFG. CO. 114 Liberty St. N. Y. 6, N. Y.



Compressed Asbestos Packing and Gaskets

Stocked at

**ASSOCIATED SUPPLIERS IN SANDUSKY
ROOT, NEAL IN BUFFALO
HARDY & DISCHINGER IN TOLEDO**

Vessel	Fleet No.	Vessel	Fleet No.
Fairmount	25	Fucik, E. James	64
Faith	208	Fueloil	81
Farr, M. E.	186	Fundy	153
Farrandoc	147		
Farrell, James A.	152	G	
Favorite	77	GDD	51
Feeley, William P.	74	GTD	51
Felicia	175	Gag Screw Stmr.	
Fellowcraft	141	13-West	39
Fenwick, Edward W.	119	Gallagher, Michael	131
Ferbert, A. H.	152	Galloway, Charles	
Fernie	25	W.	144
Ferris, James E.	91	Garantua	2
Filbert, William J.	152	Gary, E. H.	152
Findlay, Harry L.	180	Gates, John W.	152
Fink, George R.	85	Geary, G. R.	187
Finland	76	George, Capt.	191
Firbranch	118	George M.	124
Fire Chief	175	George M. Jr.	124
Fisher, Thomas	46	Georgia	77
Fitzgerald, W. E.	68	German, A. M.	27
Flora M.	124	Gilbert	108
Florence J. (see		Gillen, Edward E.	71
Owendoc)		Gilles, Donald B.	91
Florence M.	124	Gladiator	58
Florida	77	Glen G.	67
Fontana	16	Glen Valley	118
Ford, Benson	65	Glenada	136
Ford, Emory L.	85	Glenbogie	195
Ford, Henry	65	Gleneagles	25
Fort Willdoc	147	Glenelg	25
Foundation Alice	124	Glenkeen	136
Foundation Joan	124	Goderich	25
France, J. A.	169	Gokl	2
Francis	162	Goode, R. H.	60
Franqueling	159	Gotham	127
Frantz, Joseph H.	144	Grace, E. G.	150
Frazer, Jean	194	Graham, Col. J. D.	191
Frazer, Leon	152	Grainmotor	25
Fredericks, Owen M.	191	Grand Island	42
Frick, H. C.	152	Grand Rapids	72
Fritz, John	195	Grattan, W. S.	22
Frontenac	28	Great Western	194
Frontenac	42	Greater Detroit	53
		Green, Andrew H.	74

MARINE SUPPLIES



**24 HOUR LAUNCH
& TRUCK SERVICE**

**QUALITY GROCERIES,
MEATS and PRODUCE**

**EARL A. KIMMINS
MANAGER**

Res. Phone PONTIAC 1322

THE VALLEY CAMP STORES CO.

PHONE ADAMS 2911

728 WATER ST. • TOLEDO, OHIO

Vessel	Fleet No.	Vessel	Fleet No.
Green Bay	163	Hoist, R. W.	197
Gregory, J. A.	153	Holland	193
Grenville	28	Holley, Alexander	195
Grey Beaver	195	Holloway, W. W.	144
Guardian	194	Hood, Clifford F.	6
		Hoopes, William	168
		Hosford, Harry W.	91
		Houghton, Douglass	195
		House, Francis E.	152
		Houston, C. H.	169
		Howard M.	124
		Hoyt II, Elton	150
		Hubbard, Charles	76
		Hudson, A. A.	143
		Hudson, Bruce	189
		Hullman	118
		Hulst, John	152
		Hunt, W. E.	75
		Huntley, Charles R.	195
		Huron	29
		Huron	206
		Huronic	25
		Hutchinson, C. L.	91
		Hutchinson, John T.	91
		Hyacinth	115
		Hydro	102
			I
		Idaho	77
		Illinois	74
		Illinois	77
		Imperial Cobour	92
		Imperial Collingwood	92
		Imperial Cornwall	92
		Imperial Goderich	92
		Imperial Kingston	92
		Imperial Lachine	92
		Imperial London	92
		Imperial Midland	92
		Imperial Ottawa	92
		Imperial Sarnia	92
		Imperial Simcoe	92
		Imperial Welland	92
		Imperial Whitby	92
		Imperial Windsor	92

OLDMAN BOILER WORKS, Inc.

Boiler & Ship Repairing

Manufacturers of

PORT COLBORNE FAIRLEADS

Complete Portable and floating Equipment for any repair work above the water line.

Steel fabricators

OFFICE & WORKS
32-42 Illinois Street
BUFFALO, NEW YORK

Twenty-four hour service

Office: Call CLeveland 0932

Resident Phones:

Grant 9100 Triangle 2904 Triangle 3327

Vessel	Fleet No.	Vessel	Fleet No.
Indiana	77	Kelley, Norman	200
Ingalls, George H.	121	Kendall, John	52
Inglis, William	188	Kendrick, Edw. S.	203
International	175	Keneflick, Judge	195
International, The	94	Kenora	25
Iowa	77	Kenordoc	147
Ireland, Robert L.	203	Kentucky	77
Ironwood	141	Kermic	160
Iroquois	88	Kerr, D. G.	152
Irvin, W. A.	152	Keybar	103
Irwin, John	174	Keybell	103
Iselin, Adrian	141	Keydon	103
Ishpeming	42	Keynor	103
Island Queen	183	Keypost	103
Islander	99	Keyshey	
Ivey, T. A.	98	(nee Trenora)	103
Iveyrose	98	Keystate	103
		Keyvive	103

J

Jackson, George H.	74	Killaly, A. L.	28
James, Jesse	156	Kinch, William H.	74
Jane "T"	127	King, Willis L.	96
Jaques T.	177	Kingdoc	147
Jerry	162	Kingston	25
John, J. B.	149	Kinmount	25
John V.	208	Kinney, A. T.	203
Johnson, E. E.	75	Kishman, H. B.	104
Johnson, Horace	152	Kling, John A.	165
Johnston, Robert E.	48	Koalkraft	178
Joliet	42	Kopmeier, Norman	
Jolliet, Louis	112	J.	16
Jones, B. F.	96	Krupp, Alfred	135
Jones, Elmer W.	18	Kulas, E. J.	203
Jones, Harry R.	150		
Josephine	50		
Joyce, Lee	184		
Jupiter	101		

L

		La Belle	85
		Lachine	194
		Lackawanna	14
		Lagonda	16
		Laholm	181
		Lakeshell	172
		Lakeside III	20
		Laketon	169
		Lamont, Thos. W.	152

K

Kam	2
Kansas	77
Keewatin	31
Kellers	129
Kelley Island	102

G-E KEEP 'EM SAILING SERVICE IN THESE GREAT LAKES PORTS

• BUFFALO

Sales Office: 535 Washington Street
Service Shop: 318 Urban Street

• CHICAGO

Sales Office: 840 South Canal Street
Service Shop: 849 South Clinton Street

• CLEVELAND

Sales Office: 4966 Woodland Avenue
Service Shop: 4966 Woodland Avenue

• DETROIT

Sales Office: 700 Antoinette Street
Service Shop: 5950 Third Avenue

• DULUTH

Sales Office: 14 West Superior Street

• MILWAUKEE

Sales Office: 940 West St. Paul Ave.
Service Shop: 940 West St. Paul Ave.

• TOLEDO

Sales Office: 420 Madison Avenue
Service Shop: 1 South St. Clair Street

We will arrange for engineering service and replacement—part deliveries at any port on the Great Lakes.

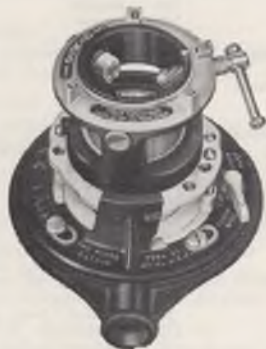
GENERAL ELECTRIC



640-211

Vessel	Fleet No.	Vessel	Fleet No.
Lansdowne	29	Madelein T.	177
LaSalle	42	Madison	72
Laughlin, James	96	Magna	91
Lavaldoc	147	Magpie	2
Laverendrye	190	Maia	91
Laviolette	28	Maida	156
Laviolette	190	Malden	125
Lawrencod	147	Maine	77
Lebanon	14	Maine	182
Leecliffe Hall	83	Maitland	166
Lehigh	14	Majestic	74
Lehtinen, Oscar	75	Makawell	110
Lemoyne	25	Makejell	79
Le Pluvier	46	Malietoa	152
Leslie, Alexander	106	Manicouagan (nee Empire Rother)	159
Lester K.	104	Manilla	91
Lethbridge	25	Manistee	193
Levis	155	Manitoba	31
Lillian	166	Manitoulin	55
Lindabury, R. V.	152	Manitowoc	198
Lisgar	46	Manseau No. 101	118
Livingstone, Gordon B.	153	Manseau No. 104	46
Londonderry	175	Manseau No. 105	46
Lorain	113	Mantadoc	147
Loretta	28	Manuel, John S.	91
Lotbiniere	175	Mapleheath	25
Louisiana	77	Marguerite T.	177
Lubrolake	110	Marguerite W.	75
Ludington	193	Marigold	115
Luedtke, Erich R.	114	Marine Derrick No. 14	167
Luedtke, Karl E.	114	Marine Derrick No. 17	167
Lydon, William A.	74	Marine Derrick No. 18	167
Lynch, Thomas	152	Marion	74
M			
M-9	74	Markham, Gen. E. M.	74
M.F.D. No. 15	133	Marquette	42
Macaulay, A. M.	27	Marsala	91
MacDiarmid	191	Martha C.	74
Mackinac Islander	c	Martian	25
MacNaughton, James	203	Mary C.	74
Macoubrey, J. H.	131	Mary Margaret (see Chippewa)	
Macpherson, Norman B.	195		

Extra Speed Threading 1" to 2" pipe



In just 10 seconds you're ready to cut perfect threads on 1", 1 1/4", 1 1/2" and 2" pipe. Workholder sets instantly—only one screw to tighten, no bushings. No. 65R is self-contained, needs no extra dies. Buy from your Supply House.

The Ridge Tool Company
Elyria, Ohio

RIDGE

Vessel	Fleet No.	Vessel	Fleet No.
Maryland	14	Merle H.	75
Maryland	77	Meteor	43
Mascot	138	Michigan	42
Massachusetts	77	Michigan	74
Massey, F. V.	135	Michigan	77
Mataafa	141	Michigan	128
Mather, Samuel	150	Michigan	182
Mather, William G.	42	Michigan City	70
Mathewston	169	Midland Prince	25
Mathilda	175	Mike M.	124
Mathlott, E. G.	144	Miller, J. Clare	144
Matton #20	120	Miller, Governor	152
Matton #21	120	Mills, D. O.	150
Matton, Edna M.	120	Milverton	169
Matton, John E.	120	Milwaukee (nee Dearborn)	40
Matton, Margaret	120	Milwaukee	193
Matton, Ralph E.	120	Milwaukee Clipper	204
Maumee	191	Mincoe, Miss	188
Maunaloa II	195	Minch, Philip	180
Mayer, Oscar F.	74	Minnacog	27
McAlpine, Jas. E.	19	Minnesota	77
McBride, Sam	188	Miseford	123
McCarthy, T. J.	121	Misener, Lt. J.	169
McCauley	192	Misener, Ralph	169
McCool, Daniel	33	Misener, Scott	169
McCormick, John A.	74	Mississippi	77
McCullough Jr., C. H.	150	Missouri	77
McDougald, John A.	172	Mitchell, Samuel	89
McFarland, O. S.	144	Mitschfibre	56
McGean, W. H.	91	Mogul	74
McGonagle, W. A.	152	Mohawk Deer	13
McGuire, Dr. Walter G.	74	Moloney, D. A.	21
McKee, Geo.	118	Mondoc	147
McKellar, J. O.	169	Montana	77
McKerchey, John M.	102	Montauk	115
McKinney, Price	91	Montcalm, General	118
McLauchlan, Wm.	150	Moody, R. E.	144
McQueen, Patricia	125	Morgan, J. P.	152
McWatters, J. N.	169	Morgan Jr., J. P.	152
Mead, George W.	121	Morning Star	78
Meadcliffe Hall	83	Morrell, Daniel J.	14
Meaford	25	Morrison, Capt.	118
Meldrum, H. A.	120	Morrow, Jos. S.	161
Menasha	66	Morse, Jay C.	150
Menominee	193	Morse, Samuel F. B.	152

POWER RESTORED

to marine boilers



and equipment

Many lake ship operators have found Dowell's dockside Chemical Service a rapid, effective method of removing scale from heat exchange equipment.

CHEMICAL CLEANING SERVICE I

DOWELL

TULSA 3, OKLAHOMA

Subsidiary of The Dow Chemical Company

Branches: Fisher Bldg., Chicago 2

Terminal Tower, Cleveland 13

Fisher Bldg., Detroit 2

Mt. Pleasant, Michigan

Rand Bldg., Buffalo 2

Vessel	Fleet No.	Vessel	Fleet No.
Mudge, Edmund W.	85	Northcliffe Hall	83
Munising	42	Northumberland	140
Munson, John G.	17	Norton, David Z.	144
Murphy, E. P.	169	Norway	76
Murphy, Simon J.	91	No. 4	127
Murray, James J.	74	No. 5	127
Myron K.	104	No. 27	208
Mystic Isle	62	No. 54	74
		No. 55	74
		No. 56	74

N

N.H.B. No. 1	136		
N.H.B. No. 3	136		
N.H.B. No. 6	136		
Nash	192		
Nassau	64		
Nebraska	77		
Neenah	66		
Negaunee	42		
Nettleton, A. E.	76		
Nevada	77		
New Brunswick No. 1	153		
New Hampshire	77		
New Jersey	77		
New Mexico	77		
New Welland	118		
New York	74		
New York	77		
New York News	159		
Newbrudoc	147		
Newman, T. F.	77		
Newscarrier	160		
Niagara	73		
Niagara	192		
Nipigon	2		
Norco	142		
Norisle	55		
Normac	55		
Noronie	25		
North American	37		
North Carolina	77		
North Dakota	77		
North Harbor	200		
North Shore	116		
North Star	118		
North Wind	118		

O

Oakbranch	118		
Odanah	150		
Ogdensburg	30		
Oglebay, Crispin (nee S. B. Way)	144		
Ohio	74		
Ohio	77		
Oklahoma	77		
Olcott, Wm. J.	152		
Olds, Irving S.	152		
Omaha	7		
Ontadoc	147		
Ontario No. 1	145		
Ontario No. 2	145		
Oregon	77		
Orient Bay	2		
Orion (nee Edge- water)	43		
Ornefjell	79		
Osborn, F. C.	63		
Osler	25		
Osprey	191		
Otrea II	118		
Ottawa	9		
Ouibeer	42		
Outarde	159		
Owendoc (nee Florence J.)	147		

P

P.W.D. No. 117	146		
Paine, Wm. A.	91		

Preservo

Copyright U.S. and Canada Patent Office

the only reliable
weatherproofing and
preservative for canvas

DOUBLES THE WEAR OF YOUR
CANVAS.

Insist on getting the best—
"PRESERVO"

FLAMEPROOFING also available.

Robeson Preservo Company

Sole Manufacturers

PORT HURON, MICH.

Canadian Branch: Sarnia, Ontario

The Upson Walton Company
Cleveland, O., Chicago, Ill.
Geo. B. Carpenter Co., Chicago, Ill.
Joys Bros., Milwaukee, Wis.
Frontier Marine Supply,
Buffalo N. Y.
Stan Kennedy, Port Colbourn, Ont.
Bell Marine & Mill Supplies,
Humberstone, Ont.

Vessel	Fleet No.	Vessel	Fleet No.
Faisley, Robt. J.	144	Powerful	208
Palmer, Wm. P.	152	Pratt, John	175
Palmleaf	118	Prescodoc	147
Panoil	80	Prescotont	30
Panton, Wm. R.	60	Prescott	25
Paratex	82	Presque Isle	42
Pargny, E. W.	152	Price, John H.	83
Pat M.	124	Princeton	91
Pathfinder	150	Prindoc	147
Paul, Chas. A.	203	Purnell, Frank	150
Paul H. M.	124	Purvis, E. D. M.	157
Paul M. Jr.	124	Put-In-Bay	10
Paul T.	177		
Pauline T.	177		
Pelee	26		
Penetang	25	Quebec	25
Pennsylvania	77	Quedoc	147
Penobscott	141	Queenston	169
Pere Marquette 10	36	Quintus	192
Pere Marquette 12	36		
Pere Marquette 14	36		
Pere Marquette 18	36		
Pere Marquette 22	36		
Perkins, Geo. W.	152		
Perseus	141		
Petco #5 (nee CBC			
801)	40		
Phipps, Henry	152	R.C.Co. Tug No. 1	167
Pickands, Col. Jas.	150	R.C.Co. Tug No. 4	167
Pillsbury, John S.	195	R.C.Co. Tug No. 5	167
Pinebranch	118	R.M.Co. Dredge No.	
Pioneer	42	10	46
Pioneer	191	Racey	87
Poe, Gen. Orlanoo M.	152	Racine	77
Polaris	43	Racine	193
Pollock, W. G.	131	Racine, Pierre	175
Polykarp	181	Fammacher, John J.	195
Pomoko	194	Rand, George F.	16
Pontiac	42	Randall, Clarence B.	91
Pontoon	77	Ranney, R. P.	186
Pope, E. C.	141	Rapids Prince	25
Poplarbranch	118	Ravnefjell	79
Portadoc	147	Ray, F. G.	191
Porter, Gay	153	Ream, Norman B.	152
Porter, Margaret	153	Red Crown	179
Post, G. G.	144	Red Crown	200
		Redcloud	13
		Redfern	13
		Redriver	13
		Redwood	13
		Rees, W. D.	100

GAMLEN

CHEMICAL COMPANY

San Francisco • Pittsburgh • New York
DISTRICT AGENT

Schaefer Brothers, 1600 Fall Street
Cleveland

Distributing Points in All Great Lakes Ports

GAMLENITE . . . for eliminating combustion deposit and slag chemically.

FIREMASTER . . . a seamless monolithic coating for protecting refractory walls of all types of furnaces.

GAMLENOL . . . for dissolving sludge, and preventing reaccumulation; purifying lube oil systems.

DIESEL OIL . . . dual purpose fuel oil additive that eliminates sludge, improves the oil, and keeps exhaust system free of deposit, soot, etc.

GAMLEN "X" Solvent . . . for dissolving water scale and rust in boiler tubes, etc.

GAMLEN Compound No. 8 . . . for cleaning the steam side of condensers, etc.

RUST PREVENTIVES . . . coatings made in several grades for many purposes.

GAMLEN "H" Special Solvent . . . for removing deposits of sludge, gum, and carbon from hot or cold machined surfaces.

GAMLEN "CW" SOLVENT . . . for "cold" cleaning of oil tanks, etc. Requires no addition of kerosene, etc.

Vessel	Fleet No.	Vessel	Fleet No.
Regent	82		S
Reinecke (nee Tyrer)	192		
Reiss	163	Sachem	60
Reiss Brothers	164	Safeguarder	28
Reiss, Clemens A.	164	St. Clair	35
Reiss, J. L.	164	St. Hellers	28
Reiss, John P.	164	St. Lawrence	25
Reiss, Otto M.	164	St. Claire	15
Reiss, Peter	164	Sainte Marie	117
Reiss, Richard J.	164	Salvage Prince	158
Reiss, Wm. A.	164	Salvage Queen	158
Reliance	77	Sand Boy	158
Renvoyle	25	Sandcraft	48
Resolute	166	Sandra	202
Reynolds, Walter B.	83	San-Mar	162
Rhode Island	77	Saracen	93
Richards, John B.	195	Saskadoc	147
Richardson, W. C.	144	Saskatoon	25
Richelieu	25	Sault-on-Mouton	160
Rickey, James W.	168	Sault Ste. Marie	191
Rival	175	Saunders Jr., E. N.	131
Robinson, C. S.	150	Savannah	192
Robinson, T. W.	17	Schiller, Wm. B.	152
Roberts Jr., Percival	152	Schneider, Cletus	170
Roche, John J.	64	Schneider, Pam	170
Rock General II	118	Schoellkopf	16
Rock General IV	118	Schoonmaker, Col.	
Rockcliffe Hall	83	J. M.	173
Rocket	43	Schwab, Charles M.	150
Rocket	139	Schwartz, K. V.	171
Rockwood	102	Scobell, Jos. S.	63
Roebing, John A.	195	Scotiadoc	147
Roen, John	166	Scout	74
Roen III, John	166	Secord, Capt. C. D.	135
Roen IV, John	166	Selkirk	25
Roger	40	Sellwood, Joseph	150
Roger K.	104	Sensibar, J. R.	144
Rogers City	129	Serre, Sherman H.	127
Rogers, G. W.	27	Service	5
Rogers, H. H.	152	Seubert, Edward G.	179
Roosevelt, Theodore	41	Shamrock	126
Rouille	153	Shasta	19
Royalton	169	Shaughnessy, Sir	
Rutenfjell	79	Thomas	135
		Shaugraun	60
		Shaun Rhue	60

ELGIN SLUDGE DECONCENTRATOR

The ELGIN System makes a boiler self-cleaning, permitting long periods between washouts. Sludge and mud are removed while the boilers are in service.

Deconcentrators insure:

No Mud No Sludge No Scale
Better Circulation Clean Boilers

Elgin Chemical Treatment

ELGIN Balanced Chemical Treatment and ELGIN Service prevent scale, corrosion and embrittlement. Fleet supervision insures uniformity of boiler water control for each steamer.

WRITE FOR MARINE BULLETIN

Elgin Softener Corporation

ELGIN, ILLINOIS

Vessel	Fleet No.	Vessel	Fleet No.
Shaw, Howard L.	195	Steel King	141
Shaw, Lawrence H.	75	Steelton	14
Sheadle, J. H.	42	Steinbrenner, Henry	180
Shelter Bay	159	Stella B.	200
Shenango	173	Stephenson, Geo.	91
Sherman VI	60	Sternecliffe Hall	83
Sherwin, John	150	Stewart, Graeme	175
Shiras, MacGilvray	180	Stewart James	195
Shuniah	153	Stewart, Robert W.	179
Sid, Jr.	5	Stifel, Wm. F.	144
Sidney M.	124	Stokes, Henry	125
Sierra	186	Stone, Amasa	150
Siljan	181	Stone Boy	158
Simard, Capt.	118	Stover, John R.	35
Simcoe	25	Straits of Mackinac	130
Simcoe, Miss	188	Strathmore	194
Sinaloa	16	Sullivan Brothers	68
Skipper M.	124	Sullivan, J. J.	91
Sloan, George A.	152	Sullivan, M.	127
Smeaton, John	91	Sulphite	56
Smith, Lyman C.	76	Sultana	141
Smith, Edmund P.	16	Sumatra	186
Smith, Hurlbut W.	76	Sunchief (nee Turret Cape)	169
Smith, L. P.	74	Superior	77
Snyder, Jr., W. P.	173	Superior	143
Sonora	141	Supertest	151
Soodoc	147	Supreme	82
Soreldoc	147	Surewater (see Keywest)	
Soulanges	28	Svaneffjell	79
South American	37	Sweden	76
South Shore	132	Swederope	56
Southcliffe Hall	83	Sylvania	186
Soutouriski	160		
Sprinkle, J. R.	200		
Sprey	7		
Sprucebranch	118		
Stackhouse, Powell	14		
Stadacona	25		
Standard Portland Cement	16		
Stanley	192		
Stanley, Robt. C.	152		
Stanton, John	91		
Starbuck	154		
Starmount	25		
Steel Derrick Scow	66		

T

Tadoussac	25
Tampico	141
Tanac 257	118
Tanac-V-222	28
Taplin, Frank E.	203
Tate, Benn E.	144
Taylor	192
Taylor, B. H.	17
Taylor, Myron C.	152

GARLOCK

PACKINGS and GASKETS

for

EVERY MARINE REQUIREMENT



**Immediate Delivery
from Garlock Branches
at these Lake Ports**

BUFFALO

38 Pearl St.
Phone: Madison 0834

CLEVELAND

1276 W. Third St.
Phone: Main 0310

CHICAGO

600 W. Jackson Blvd.
Phone: Randolph 6-6716

DETROIT

4478 Cass Ave.
Phone: Temple 3-1320

THE GARLOCK PACKING CO.

PALMYRA, N. Y.



Standard of Quality

EASTERN GAS AND FUEL ASSOCIATES

PITTSBURGH • BOSTON • CHICAGO • CLEVELAND
DETROIT • NEW YORK • NORFOLK • PHILADELPHIA
SYRACUSE

ON THE GREAT LAKES

TEXACO

Marine Lubricants and Service at These Ports

World famous Texaco Marine Lubricants and service assure effective lubrication for every type and size of main engine . . . or auxiliaries . . . for every shipboard need. Use Texaco for improved engine efficiency . . . full power . . . lower maintenance and fuel costs.



THE TEXAS COMPANY
DONALD D. LEWIS
Marine Engineer
2501 W. Third Street
Cleveland 13, Ohio

ASHTABULA, OHIO

Cook Marine Hardware,
987 West Fifth Street.
Day Phone: 44-101
Night Phone: 24-932

BUFFALO, N. Y.

Frontier Marine Supply Co., Calumet Market,
223 Erie Street 10755 South Hoxie Street,
Day Phone: Cleveland 4207 Chicago, Ill.
Night Phones: Amherst 0190 Day Phone: Regent 2-0200
and Parkside 5789 Night Phone: (same)

(CHICAGO, ILL.

(SOUTH CHICAGO, ILL.

(GARY, IND.

(INDIANA HARBOR, IND.

(BUFFINGTON, IND.

CLEVELAND, OHIO

J. & A. Thompson Company, The Texas Company
1146 West Eleventh Street 2119 N. Quincy Street
Day Phone: Main 0077 Phone: Howard 797
Night Phone: Lakewood 3096 Day Service Only.

CONNEAUT, OHIO

Pittsburgh Steamship Com-
pany, (at the dock)
Day Phone: 42-901
Night Phone: 42-901

GREEN BAY, WISC.

LORAIN, OHIO

J. F. Logan
108 East Erie Street
Day Phone 8153
Night Phone: 8181

DETROIT, MICHIGAN

Nicholson Terminal & Dock
Co.,
Ecorse, Michigan
Day Phone: Vinewood 2-4300
Night Phone:
Vinewood 2-4305

MILWAUKEE, WISC.

Joy Brothers Company
120 North Waters Street
Day Service Only
Phone: Daly 0810

(DULUTH, MINNESOTA

(SUPERIOR, WISCONSIN

The Northern Engineering
Co.
100 Ogden Avenue
Superior, Wisc.
Day Phone: 4211
Night Phones: 5037 & 2-1001

(SANDUSKY, OHIO

(HURON, OHIO

Camp Street Market
1046 Camp Street
Sandusky, Ohio
Day Phone: 330
Night Phone: 1364M

ERIE, PENNSYLVANIA

Carl H. Meiser
818 Peach Street
Day Phone: 23-637 or 23-638
Night Phone: 65-110

TOLEDO, OHIO

Hardy & Dischinger Company
121 St. Clair Street
Day Phone: Main 1124 or
1125
Night Phone: (same)



TEXACO

MARINE LUBRICANTS

FRANK MORRISON & SON COMPANY

Magnetic Compass Adjusters.
Wire Rope and Wire Rope Fittings
Manila and Sisal Rope
Marine Hardware
Tackle Blocks

●

MFGRS. & DISTRIBUTORS OF APPROVED MARINE EQUIPMENT

Lifeboats & Life Rafts
Lifeboat Winches,
Mechanical Davits
Nautical Instruments,
Ships
Running Lights
South Bend Heavy Duty Oil &
Coal Galley Ranges
Shipmate Ranges
Wing Ventilator Fans,
Sunroc Water Coolers
Aluminum Ladders

●

Office, Factory and Warehouse
1330 West 11th Street
Cleveland, Ohio

Telephone MAin 4435-6

Vessel	Fleet No.	Vessel	Fleet No.
West Shore	201	Winnipeg	25
Westcliffe Hall	83	Wisconsin	77
Western States	53	Wolcott	191
Westmount	25	Wolf, Wm. M.	68
Weyburn	25	Wolfe Islander	205
Whalen, Edward C. ..	46	Wolverine	144
Whalen, James	194	Wolvin, Augustus B.	150
Whitby	46	Wood, Joseph	85
White, Peter	42	Wyandotte	206
White, W. F.	17	Wyoming	77
White Swan	116		
Whitney, William A. .	127	Y	
Widener, Peter A. B. .	152	Yale	77
Wilkinson, Frank ..	169	Yankcanuck	207
Wilkinson, Horace S. .	76	Yates, Harry	16
Willard L.	48	York, Miss	188
Williams	191	Yosemite	42
Williams, H. D.	152	Young, Col. E. M. ...	16
Williams, Harry B. ...	74	Youngstown	150
Williams, John C. ...	131		
Wilson, Thomas	203	Z	
Windoc	147	Ziesing, August	152
Windsor	198		

THE SYSTEM OF SCIENTIFIC
WATER TREATMENT

Nalco

*... keeps boilers
and feedlines clean!*

SAFE, CONVENIENT, ECONOMICAL ...

the Nalco System of water treatment for Marine boilers has been time-tested and will provide the results you desire.

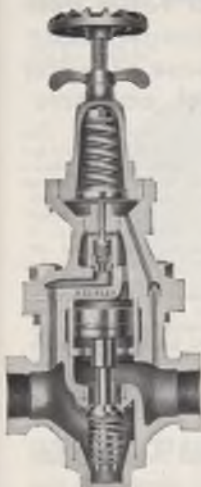
Marine Department

**NATIONAL ALUMINATE
CORPORATION**

6232 West 66th Place, Chicago 38, Illinois



KECKLEY
CHICAGO



PRECISION PRESSURE REGULATOR

with
STAINLESS STEEL
RENEWABLE VALVE
AND SEAT AND
UNIT PILOT VALVE

300 LBS. or 1 LB.
FOR STEAM or AIR

High initial pressures can be readily reduced in one step to pressures as low as one pound without change of springs and will be maintained constantly from no flow to full flow requirements and hold tight on dead end service.

Tested and approved U. S. Navy for Design, Materials, Workmanship and Operation, and U. S. Coast Guard Great Lakes Representative

T. V. SORDS

800 Marshall Bldg.

Cleveland, O.

Tel: CH 7330

O. C. KECKLEY COMPANY

Steam Traps—Temperature Regulators—Pump Regulators—Water Gauges—Gauge Cocks—Strainers
400 West Madison St. Chicago 6, Illinois



EYE-HYE

protects you and
your vessel from
danger and
expense of water
level accidents

A time saver, a step saver, EYE-HYE brings your water gages down or over to engine room or control station for quick, frequent reading. Bright green indicating fluid, illuminated, gives you accurate check on boiler water levels. Dependable, trouble-proof. Calibration (made at factory) cannot be tampered with. Approved by marine authorities. Thousands used on all types of vessels, lake and ocean. Write for bulletin.

The Reliance Gauge Column Co.

5902 Carnegie Avenue Cleveland 3, Ohio

Reliance

Boiler Safety Devices Since 1884

HARPER

METAL PACKINGS



Simple and accurate in design—efficient and economical in performance.

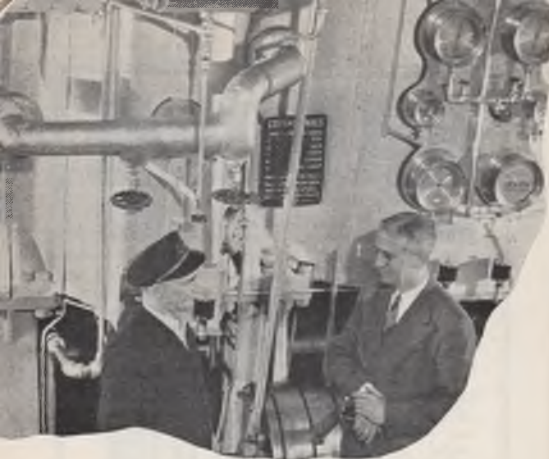
HARPER PACKING CO., INC.

314 PATTERSON ST.
CHESTER, PA.

GREAT LAKES REPRESENTATIVE:

JNO. J. DISCH CO.

6109 Franklin Blvd. Cleveland 2, Ohio
Phone—WOOdbine 6717



SOHIO MARINE LUBRICANTS

Help Keep Machinery Ship-Shape

SOHIO Marine Lubricants have been perfected to stand up under the toughest shipping conditions—they hold their body under load and will not thin out under heat. SOHIO Marine Lubricants will serve you well in helping to protect your machinery and thereby assure uninterrupted performance. Phone your nearest distributor (see next page) for any marine lubricant need.

Call at These Convenient Lake Ports

SOHIO MARINE LUBRICANTS

ASHTABULA HARBOR

987 West 5th Street
Cooks Marine Hardware
Phone: Harbor 44-161 *Day*
Night-Sun. 46-022;
46-024; 36-732

BUFFALO HARBOR

223 Erie Street
Frontier Marine Supply Co.
Phone: Cleve. 4027 *Day* or
AM 0190 *Night*
PA 5789 *Night*

CLEVELAND HARBOR

1310 West 11th Street
The Upson-Walton Com-
pany
Phone: Main 7444 *Day*
Boulevard 7817 *Night-*
Sun. Vulcan 3-4252
Night-Sun. Melrose 7585
Night-Sun.

CONNEAUT HARBOR

At the Dock
Pittsburgh Steamship
Phone: 42-901

ECORSE, MICHIGAN

At the Nicholson Fuel Dock
Nicholson Terminal Dock
Co.
Phone: Vinewood 2-4300
Day. Vinewood 2-4305
Night

ERIE HARBOR

425 State Street
A. H. Brebner & Son
Phone: C. 55-121 *Day*
Night and *Sunday*
23-301—55-567

FAIRPORT HARBOR

At the Dock
Beacon Market
Phone: Painesville 3641 *Day*
Painesville 9469 *Night-*
Sun.

HURON HARBOR

245 Main Street
Huron Marine Supply
Phone: 3941 *Day* 3822 *Night*

LORAIN HARBOR

341 East Erie Street
C. N. McHenry
Phone: 8134 *Day*
84-358 *Day* or *Night*

SANDUSKY HARBOR

121-125 West Water Street
Associated Suppliers, Inc.
Phone: 18 & 5012 *Day*
3629 *Night & Sun.*

TOLEDO HARBOR

121 St. Clair Street, N.
Hardy & Dischinger Co.
Phone: Main 1124 *Day* and
Night

The STANDARD OIL Co. (OHIO)

Marine Sales Dept. — MAIN 7400
MIDLAND BLDG. CLEVELAND, O.



SERENE

S. K.

KLEANER

REG. U. S. PAT. OFFICE

**REMOVE
OIL, GREASE, DIRT
FROM**

**CLOTHES, PAINTED SURFACES
BOILER, ENGINE ROOM
FLOORS AND DECKS**

**MARITIME QUALITY
FOR OVER 25 YEARS**

**AVAILABLE
in 150# DRUMS
FROM**

HAUSHEER & Sons Co.

1220 West 11th Street, Cleveland
Phone: MA 1580

OR

SERENE KLEANER Co.

P. O. BOX 2902
Phone: WESTLAKE 1765
CLEVELAND 16, OHIO

Baldt

ANCHORS

and

"DI-LOK" CHAINS

Strongest Anchor-Chain Known!

Large stock of new, used
and reconditioned anchors
and chains.

BALDT

ANCHOR, CHAIN & FORGE DIVISION

of

The Boston Metals Co.

CHESTER, PA.

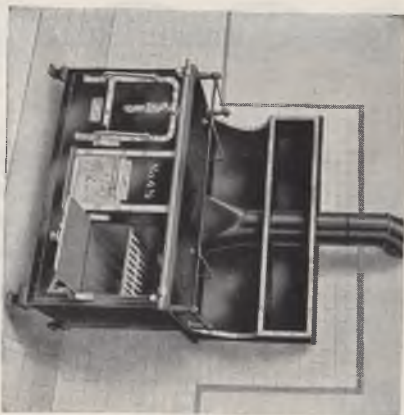
Great Lakes Representative:

F. S. HUTCHINSON

823 Rockefeller Building, Cleveland 13, Ohio

Phone: PRespect 6337





REPAIRS FROM YOUR DEALER OR DIRECT

ASHYABUA

Milner-Anderson Co.
Topky Brothers

CLEVELAND

Hausbeer & Sons Co

DETROIT

Fred Marriott
Detroit Marine Supply Co.

Constans-Dunith Marine
Inc.

ERIE

Carl H. Meisner
FAIRPORT HARBOR

HillsHardware & Pipe, Co.

HURON

Henes & Wilkes

RUSSELL & WATSON Division of RUSSELL & SONS, INC.

BUFFALO, N. Y.

LORAIN

Lorain Hardware Co.
Chas. N. Auldrey

MAINITOWOC

Wm. Rathsgak & Son Co.

MILWAUKEE

H. Johnson Co.

SANDUSKY

Camp Street Market
Hohler Furnace & She
Metal Co.

SUPERIOR

Berthlaumes, Inc.
SOUTH CHICAGO

Jas. A. Black Hdq. Co.
TOLEDO

TOLEDO

Superior Foods, Inc.
Valley Camp Stores Co

OWNERS, MASTERS AND ENGINEERS OF LAKE VESSELS

Unless otherwise designated, all vessels are steamers. M. V. denotes motor vessels. Figures after bulk freighters are, in order, keel length, beam depth, hatches, and gross tons carrying capacity at 20-foot draft. Tonnage figures for other vessels are their capacity loading, in gross tons. In personnel, name of captain is given first, and chief engineer second. Asterisk indicates carryover of 1948 appointments, no response having been received to questionnaire for 1949.

Vessel	Captain	Chief Engineer
1 Abitibi Navigation Co. Ltd., 408 Wahcondah	University Ave., Toronto (2), Ont. J. R. Montgomery	W. J. Tymon
2 Abitibi Power & Paper Co. Ltd., Gokl (m.v.)	Woods Dept., Port Arthur, Ont. R. Spooner	E. Manners
Kam (m.v.)	R. L. MacVittle	W. E. Monkhouse
Nipigon (m.v.)	G. D. Martin	W. Service
Orient Bay (m.v.)	W. E. Toner	A. Fraser
At Sault Ste. Marie, Ont.		
Abitibi	J. W. Alexander, Towing Superintendent	Gilbert Harris
Gargantua		Herman Henze
Magpie		Not in commission
		Fred Harrison
		Fred Lewis

Vessel

Captain

Chief Engineer

3 Algoma Central & Hudson Bay Railway Co., Sault Ste. Marie, Ont.

(Owner and Operator)

G. H. Shanks, Superintendent Steamship Line

Algocen	504-54-30	9,800	M. A. Livingstone	B. T. Myler
Algorail	346-48-28	5,500	Chas. T. Beatty	M. C. Tymon
Algooso	346-48-28	5,500	A. H. Blackwell	Verne Willis
Algotsteel	480-52-30	8,500	M. A. Loughheed	S. H. Wheeler
Algoway	356-50-28	6,000	James Sykes	D. A. McConnell

4* Allouez Marine Supply Co., Inc., E. 3815-17 Itasca St., Superior, Wis.

G. L. Bug (tug)	Charles Converse
G. L. Hallam Bros. (tug)	K. Parinteau
36 B 352	No appointments

5 American Ship Building Co., The, Foot of W. 54th St., N.W., Cleveland 2,

(Owner and Operator)

No appointments made

At Buffalo: Repair steamer Service.

At Chicago: Motor launches C. S. B. 2, Chicago Ship No. 1, Chicago Ship No. 3, Chicago Ship No. 5, Repair steamer Robert J. Close.

At Lorain: Motor launches, Cleveland Ship and Sid, Jr.

At Toledo: Motor launch American Ship No. 1 and Am-ship; repair scow American.

American Steamship Co. (See Fleet No. 16)

6 American Steel & Wire Co., Rockefeller Bldg., Cleveland 13

(Owner and Operator)

E. R. Cassidy, Manager Lake Transport Division

Clifford F. Hood	John G. Woerpel	John H. Rathbun
------------------------	-----------------------	-----------------

7* American Tug & Transit Co., 612 Clairmont St., Port Huron, Mich.

(Owner and Operator)

E. S. Lindsay, President

Sprey (diesel tug)

Omaha (barge)

8 Ann Arbor Railroad Co., Frankfort, Mich. (Operator)

C. L. Herring, Marine Superintendent

Ann Arbor Railroad Co., Toledo, O. (Owner)

Ann Arbor No. 3	C. D. Bishop	H. M. Walkley
Ann Arbor No. 5	M. G. Roen	G. H. Watson
Ann Arbor No. 6	W. G. Beaucock	H. T. Jeffs
Ann Arbor No. 7	A. A. Straubel	M. J. Dahlgren
Wabash	B. H. Hanson	W. R. Benson

9 Arnold Transit Co., Mackinac Island, Mich. (Owner and Operator)

Algomah II	Wm. F. Schepler	Evart Powers
Chippewa (m.v.)		
(nee Mary Margaret)		

Mackinac Islander	Louis Strahan	Wm. Peterson
Ottawa	Edward Couchois	R. O'Brien

52

53

Vessel	Captain	Chief Engineer
10* Ashley & Dustin Steamer Line, 170 First St., Detroit		
Put-in-Bay (passenger)	Morgan L. Howell	J. Williams
11 Bay Transportation Co., The, Sandusky, O. (Owner and Operator) A. Kuebeler Jr., President and General Manager		
G. A. Boeckling	Otto Wyss	Ernest W. Blanchard
Bayfax Steamships Ltd. (See Fleet No. 44)		
12 Bayswater Shipping Ltd., Brockville, Ont. (Owner and Operator) G. M. Davidson, Managing Director		
Bayanna	Thos. W. Adam	Thos. L. Hayes
13 Beaconsfield Steamships Limited, 635 Common St., Montreal, Que. R. A. Campbell, Managing Director		
Mohawk Deer	H. Finn	C. B. Reid
Redcloud	B. Jarvis	A. W. Orr
Redfern	A. Mallette	L. Jones
Redriver	R. Mallette	F. Oakley
Redwood	R. W. Watt	B. Blom
Wm. C. Warren	J. J. Mailhot	E. Warner
14 Bethlehem Transportation Corp., 2600 Terminal Tower, Cleveland 13 (Operator) G. V. Evans, Manager; A. H. Amhaus, Fleet Engineer		
Bethlehem	580-60-32 12 12,100	Charles Lindsay Thomas Griffiths
Cambria	504-54-30 24 9,400	George J. Brunelle John Howell

W. H. Donner	504-54-30 24 9,400	Robert A. Sinclair Oscar Anderson
L. C. Hanna	504-54-30 24 9,400	John Sagen Raymond Wells
Lackawanna	530-56-31 12 10,200	Benjamin Brabander Rolla A. Marcy
Lebanon	530-56-31 12 10,200	Edward J. McGarry Charles Cox
Lehigh	605-60-35 24 12,000	Fred Sturtevant James L. Meinke
Maryland	530-56-31 12 10,200	Edward Goff Sigurd K. Ramberg
D. J. Morrell	580-58-32 24 11,300	William J. Colson Valentine Kraemer
Powell Stackhouse	504-50-30 24 9,400	J. Kenneth Pruder Clifford L. Cheney
Steelton	605-60-35 24 12,000	Jere B. Sullivan Homer Stearns
E. Y. Townsend	580-58-32 24 11,300	Wilfred Couture F. Edward Beger

15* Bob-Lo Excursion Co., Foot of Woodward Ave., Detroit (Owner and Operator)		
Columbia	Charles H. Anderson	Donald E. Reid
Ste. Claire	George C. Wilkins	Robert I. Voce

16 Boland & Cornelius, Marine Trust Bldg., Buffalo 3, N. Y. (Operator) Howard C. Braun, Jr., Fleet Engineer; Capt. Patrick J. Healy, Fleet Captain American Steamship Co. (Owner)		
John J. Boland	480-52-30 12 9,000	August O. Rapp John Berg
Consumers Power	504-56-30 12	O. Arthur Toale Henry Carlson
Adam E. Cornelius	588-60-32 24 8,021	Even M. Solberg Torsten W. Cand
Detroit Edison	475-52-25 24 7,200	Martin L. McGuinn John Olshanski
Diamond Alkali	580-60-32 12	Lawrence W. Goudie Louis V. Bundschuh
Dow Chemical	504-56-30 12	Anthony R. Krause Harry Odell
Fontana	363-50-28 14	Frank E. Monroe Melvin A. Kerr

<i>Vessel</i>			<i>Captain</i>	<i>Chief Engineer</i>
Norman J. Kopmeier	504-54-30	12	John E. Clague	Frank P. Lull
Lagonda	374-45-27	4	Alfred R. Tyrrell	Richard F. DeGroot
George F. Rand	532-56-32	12	Harold P. Hanson	Henry S. Gustafson
J. F. Schoellkopf, Jr.	532-56-30	12	Raymond J. Laughlin	Harry Visser
Sinaloa	423-50-28	18	Albert H. Guddeck	Lloyd G. Averill
Edmund P. Smith	480-54-30	24	John J. Ross	Elmer Morrison
Standard Portland Cement	444-56-28	24	George Himmler	Edwin C. Douglas
Thunder Bay Quarries	504-54-30	24	Arnold J. Ellingsen	Earl L. Jones
United States Gypsum	504-56-30	12	Harold O. Faller	Robert R. Mangies
Venus	418-56-37	5	Irwin P. Paulson	Michael J. Regan
Harry Yates	444-56-28	24	George Sweet	Joseph Zieger
Col. E. M. Young	512-54-30	14	Andrew J. Craft	William Dugan
17 Bradley Transportation Co., Rogers City, Mich. (Owner and Operator) (All vessels are self-unloaders)				
Carl D. Bradley	615-65-33		Crossley McQuinn	John Sparre
Calcite	416-54-29		Donald MacLeod	R. G. Buehler
John G. Munson	530-60-32		Roland Bryan	Arthur Urdal
T. W. Robinson	566-60-32		Donald Nauts	Chas. Frederick
B. H. Taylor	530-60-32		Chris Swarts	Thos. Suttle
W. F. White	530-60-31		Rolland Ursem	Guy La Bounty

Branch Lines Limited (See Fleet No. 118)

18 Brockville & Morristown Ferry Co. Inc., P. O. Box 205, Morristown, N. Y.				
Elmer W. Jones			Fred. Loveless	Chas. Kohler
			Math. Farrell	Gerald Stillwell
19 Brown & Co., Chamber of Commerce Bldg., Buffalo (Operator) Brown Steamship Co. (Owner)				
J. J. H. Brown	432-52-28	12	5,500	A. H. Dennis
Jas. E. McAlpine	432-52-28	12	7,500	R. H. Russell
				Fred Vieau
				Ray Hanel
Shasta Steamship Company, Inc. (Owner)				
Shasta	380-50-28		6,300	N. L. Donner
				Joseph Roche
20 Brown, Worthy R. & Son, Inc., Lakeside, O. (Owner and Operator) William R. Brown, Port Captain				
Lakeside III (tug)				

Brown Steamship Co. (See Fleet No. 19)

21 T. H. Browning Steamship Co. Inc., 2343 Guardian Bldg., Detroit 26 (Operator) Overlakes Freight Corp., Nicholson Lines (Owner)				
Coralia				O. L. Duncanson
Crescent City				Frank Burkman
Fred L. Hewitt				John Tonge
D. A. Moloney				Hiram A. Shaw
				Gordon W. Emig
				Clarence Lindvall
				Joseph Wiepert
				Delos C. Babb

Buckeye Steamship Co. (See Fleet No. 91)

<i>Vessel</i>	<i>Captain</i>	<i>Chief Engineer</i>
22	Buffalo, City of, Department of Fire, Buffalo Jos. S. Masterson, Commissioner of Fire	
W. S. Grattan (steam fire tug)	Patrick J. Mullane	John J. Dee

23	Cadwell Marine Ltd., 602 Erie Ave., Niagara Falls, Ont. D. G. Bawtinheimer, President and Manager	
C. W. Cadwell	Stanley Greig	G. A. Kinchen

24	Canada Cement Transport Ltd., Canada Cement Bldg., Montreal, Que. (Owner and Operator) (Both vessels are self-unloaders)	
Bulkarier	253-43-25	T. H. Lighthall
Cementkarrier (el. m.v.)	253-43-20	E. Knudsen
		Wilson L. Emrick
		M. E. Fowler

25	Canada Steamship Lines Ltd., P. O. Box 100, Montreal, Que. (Owner and Operator)	
N. J. Reoch, Operating Mgr., Montreal; P. S. Jaeger, Dist. Mgr., Cleveland		

Upper Lake Bulk Freighters

Ashcroft	524-62-28 ..	9,250	W. H. Montgomery	J. Douglas
Burlington			A. J. Galloway	R. W. Howes
Collingwood	386-50-23 ..	5,410	E. A. George	M. M. Murphy
Martian	346-48-24 24	5,300	R. Anderson	W. J. Coburn
Donnacona	604-59-28 ..	10,580	E. Griesbach	F. Lumley
Gleneagles	582-60-28 ..	10,000	P. Beatty	M. J. O'Brien
Goderich	480-54-26 ..	7,500	A. Allen	A. J. O'Brien

Hagarty	536-58-27 ..	8,800	Alex Wilson	A. J. McChristie
Lemoyne	621-70-25 ..	12,600	T. S. Patterson	D. G. Pruder
Prescott	494-50-24 ..	7,500	E. F. Raeburn	A. V. Smith
Stadacona	582-60-28 ..	10,100	A. F. LacLennan	W. H. Taylor
Westmount	536-58-27 ..	8,900	J. W. Scarrow	M. Dedman

Upper Lake Package Freighters

Huronic			H. L. Beaton	J. B. Polding
Renvoyle			A. Francis	A. P. Norris

Self-Unloading Coal Carriers

Coalhaven			E. Gow	E. Ross
Collier			C. Armstrong	A. Zoskey
Glanelg			J. A. Glen	A. E. Hardman
Midland Prince			L. G. Bird	W. J. Nicholls
Osler			R. Belcher	K. Buchanan

Package Freighters

Battleford			A. J. Story	H. McCoag
Beaverton			J. P. Kimmerly	F. H. Gilbert
Calgarian			V. A. Hill	A. E. House
Canadian			C. J. Hall	L. R. Rousseau
City of Hamilton			W. J. Hore	W. T. Pitfield
City of Kingston			H. J. Clarke	R. G. Kelly
City of Montreal			N. Legault	T. Nicholas
City of Toronto			M. J. Corkey	C. A. Ross
City of Windsor			H. Laliberte	E. G. Smith
Edmonton			G. O. Jamieson	P. D. Quinn

<i>Vessel</i>	<i>Captain</i>	<i>Chief Engineer</i>
Fernie	J. A. Ferguson	P. J. Rutherford
Kenora	J. Howe	H. R. J. Canning
Lethbridge	W. Smith	D. F. Lockwood
Saskatoon	G. C. Kirk	J. Neilon
Selkirk	G. S. Ward	W. E. Downing
Weyburn	J. A. Lepine	J. A. Adams
Winnipeg	F. Morinville	C. D. Tuck

Lower Lake Bulk Freighters

Acadian	W. E. Kraus	I. McCutcheon
Barrie	J. R. Lamarre	R. D. Couper
Elgin	J. R. G. Toupin	M. R. Dunham
Fairmount	J. P. Gagne	R. Brooks
Grainmotor	O. Pregent	W. Lander
Hastings	W. C. Bennett	L. H. Tremblay
Kinmount	G. Lefebvre	A. Mondor
Mapleheath	A. L. Huston	J. H. Neville
Meaford	S. St. Onge	M. Manner
Penetang	F. Fortin	W. P. O'Grady
Simcoe	L. Mallard	G. Laroche
Starmount	O. Cromwell	R. Gibson
Teakbay	A. Wilson	P. Marchand

Eastern Division Passenger Steamers

Quebec	C. H. Burch	N. Peloquin
Rapids Prince	P. J. Cherry	J. A. Robillard
Richelieu	C. A. Bodensieck	G. Bourret

St. Lawrence	A. Duchesne	O. Peloquin
Tadoussac	A. Delage	N. Crepeau

Western Division Passenger Steamers

Cayuga	J. D. Strachan	G. R. Profit
Kingston	H. Webster	J. F. Henry

Northern Division Passenger Steamer

Noronie	Wm. Taylor	F. B. Bonnell
---------------	------------------	---------------

26 **Canadian Auto & Passenger Ferries, 669 Talbot St., St. Thomas, Ont.**
 Vincent A. Barrie, President, St. Thomas, Ont.
 C. H. Richardson, Sandusky, General Passenger Agent

Canadian Holiday	John Gordon	Fred Gerster
Pelee	Guy Hayes	E. A. Blake

27* **Canadian Dredge & Dock Co., Ltd., 302 Harbour Commission Bldg., Toronto, Ont.**
(Owner and Operator)

A. M. German, General Manager

J. A. Cornett	John Gillem	Lawrence Blundell
Frank Dixon	J. S. Bell	Charles Lymburner
A. M. German	J. W. Hand	Mathew Ryckman
Helen S.	Charles Malcomb	George Beckett
A. M. Macaulay	Wm. Malcomb	Fred Chester
Minnacog	Wm. Oates	John Glover
G. W. Rogers	Henry Gehl	John Allen

<i>Vessel</i>	<i>Captain</i>	<i>Chief Engineer</i>
28	Canadian Government, Department of Transport, Ottawa, Ont.	

(Owner and Operator)
Marine Services
H. V. Anderson, Director

Out of Prescott:		
Grenville		J. G. Lamoureux
Out of Montreal:		
Argenteuil	Thos. Weir.....	Jos. Ranger
Safeguarder	D. Lemay.....	G. Robidoux
Vercheres	Romeo Perron	Jos. Joly
Out of Parry Sound:		
St. Heliers.....	J. C. Patchell	R. Stewart
C. P. Edwards.....	G. B. Dube	G. W. Smallwood

St. Lawrence Ship Channel Service
F. S. Jones, Chief Engineer

Out of Sorel:		
Berthier	Vincent LaForest	L. Salvail
Frontenac	H. Mercier	Chas. Braconnier

Canal Services
C. W. West, Director
(All are tugs)

At Montreal:		
Soulanges	L. Lacouture.....	Arthur Petit
A. L. Killaly	J. L. M. Gagne.....	Henri Samson

At Cascades Point:		
Carillon		W. Thauvette

At Cornwall:		
W. A. Bowden	L. McLatchie.....	H. I. Myers

At Port Weller:		
Laviolette	G. T. Baker.....	

At Sault Ste. Marie:		
Tanac-V-222	W. L. Kent.....	L. Kunkel

At Peterborough:		
Bessie Butler	H. J. Young.....	R. Brotherstone
Trent	W. Copperthwaite	

At Ottawa:		
Agnes P.	B. Ranger.....	J. O'Neil
Loretta	M. Egan.....	O. Seguin

Canadian National Railways (See Fleets Nos. 29 and 140)

29	Canadian National Railways, Windsor, Ont. (Owner and Operator)	
Lansdowne (car ferry)	F. E. M. Tubbs.....	W. J. Craig
	R. V. MacQueen....	Archibald McArthur
	M. Nelson.....	A. T. Burton
Huron (car ferry).....		
(see also Fleet No. 140)		

Canadian Oil Co. Ltd. (See Fleet No. 174)

<i>Vessel</i>	<i>Captain</i>	<i>Chief Engineer</i>
30 Canadian Pacific Car & Passenger Transfer Co. Ltd., Prescott, Ont.		
(Owner and Operator)		
Frank W. Dubrule, Manager		
Prescotont (tug)	J. D. Major.....	V. Payzant
Ogdensburg (car ferry).....	J. D. Major.....	V. Payzant
31 Canadian Pacific Railway Co., Port McNicoll, Ont. (Owner and Operator)		
J. Bishop, Superintendent Great Lakes Steamships		
Assiniboia	J. R. Stewart.....	W. S. Struthers
Keewatin	R. Jarman	W. F. Irvine
Manitoba	Robt. Mitchell.....	J. M. Moses
32 Candler & Bass, Inc., 8145 Medina St., Detroit		
(Owner and Operator)		
B. E. West (diesel tug).....	Johan Martenson.....	Harry Jacobsen
Birmco (diesel tug).....		
33 Cement Transit Co., 1000 Midland Bldg., Cleveland 15 (Owner and Operator)		
Daniel McCool (m.v.) ...144-33-15	W. J. Petroskey	Mace Gordon
34 Charlevoix County		
Charlevoix, Mich.		
Charlevoix (ferry)	Alfred A. Gill	
35* Chatham Dredging & General Contracting Co., Chatham, Ont.		
(Owner and Operator)		
Aurelia (tug)		
St. Clair (dipper dredge)		
John R. Stover (tug)		
36 Chesapeake & Ohio Railway Co., The, General Motors Bldg., Detroit		
(Owner and Operator)		
L. H. Kent, Superintendent of Steamships		
(All vessels are car ferries)		
City of Midland 41.....	John Asuma.....	Sylvester Larsen
City of Flint 32.....	B. A. Robertson.....	Eskil Sjolholm
City of Saginaw 31.....	H. A. Altschwager.....	Theo. Winkle
Pere Marquette 22.....	E. R. Schmeling.....	Thomas Loy
Pere Marquette 18.....	Harold Larson.....	Herbert Brokstad
Pere Marquette 14.....	Wesley Palmer.....	Ezra Paulsen
Pere Marquette 12.....	Eric Eklund.....	Charles Millett
Pere Marquette 10.....	Thomas A. Brown.....	Lyle Mitchell
37 Chicago, Duluth & Georgian Bay Transit Co., 1614 Ford Bldg., Detroit 26		
(Owner and Operator)		
E. J. Goebel, Vice President		
North American (passenger).....	George W. Durham.....	C. T. Vermurlen
South American (passenger).....	J. Oscar Spjut.....	H. J. Wilson
Alabama	Not in operation	

<i>Vessel</i>	<i>Captain</i>	<i>Chief Engineer</i>
38 Chicago Fire Department, City Hall, Chicago		
Fred A. Busse (fireboat).....	Thomas P. Nash.....	Francis J. Murphy

39 Clair Transit Co., Wyandotte, Mich. (Owner and Operator)		
Capt. M. S. Brewer, President; Joseph A. Gage, Manager		
Gag Screw Stmr. 13.-West....100-20-6'2"	Joseph A. Gage	James Coates

40 Clark's Towing Co., Div. Petco Corp., 8530 W. National Ave., Milwaukee 14 (Owner and Operator)		
Emort T. Clark, President; J. Burgerino, General Manager		
Milwaukee (tug)		Unassigned
(nee Dearborn)		
Petco #5 (tanker barge)		Unassigned
(nee CBC 801)		
Roger (tug)		Unassigned
Welcome (tug)		Unassigned

41 Cleveland & Buffalo Steamship Co., 333 N. Michigan Ave., Chicago 1		
H. G. Dase, General Manager		
City of Grand Rapids.....	H. J. Delatre.....	John Golden
Theodore Roosevelt	Not in commission	

42 Cleveland-Cliffs Iron Co., The, 14th Floor, Union Commerce Bldg., Cleveland 14 (Operator)		
H. L. Gobeille, Manager Marine Department		
C. O. Rydholm, Marine Superintendent; J. H. Durkin, Fleet Engineer		

The Cleveland-Cliffs Steamship Co. (Owner)

Cadillac	604-60-35	24	12,000	W. F. Amsbary.....	Frank Sheppard
Champlain	604-60-35	24	12,000	J. G. Olsen.....	E. C. Ahrens
Frontenac	580-60-32	24	11,700	R. E. Hayward.....	Matt Kuntz
Grand Island	480-52-30	23	8,500	L. R. Fraser.....	Carl Hass
Hennepin	504-54-30	12	9,200	F. A. Brytz.....	Wm. J. Riordan
Ishpeming	530-56-31	12	10,000	R. H. Edgerton.....	M. Thompson
Joliet	504-54-30	24	9,200	J. A. McDermid.....	R. J. Douglas
LaSalle	530-56-31	12	10,000	C. R. Gallagher.....	S. Kouchnerkavich
Marquette	450-52-28	24	7,000	S. C. Koontz.....	John Volanski
William G. Mather.....	592-62-32	24	12,000	A. J. Rathbun.....	A. T. Ahrens
Michigan	530-56-31	12	10,000	F. J. Riedy.....	Carl Simmons
Pioneer	504-54-30	12	9,200	E. J. Scott.....	C. B. Hanlon
Pontiac	580-62-32	12	11,700	C. N. Bedell.....	P. J. Stipek
J. H. Sheadle.....	513-60-31	12	10,300	J. M. Campbell.....	Wm. Cooper

Presque Isle Transportation Co. (Owner)

Angeline	414-50-28	24	6,800	J. A. Mitchell.....	D. Currie
Presque Isle	406-50-28	24	6,500	T. E. O'Leary.....	Roy Laird
Peter White	504-54-30	12	9,200	J. I. Doud.....	Jos. S. Rose

United States Maritime Commission

Chacornac	380-50-28	24	6,000	R. E. Lowry.....	S. Melanson
Colonel	360-50-28	24	5,800	F. E. Newton.....	G. H. Taylor
Munising	380-50-28	24	6,000	F. J. DeLeur.....	John Holman
Negaunee	380-50-28	24	6,000	C. V. Jilbert.....	Earl Dawson
Yosemite	360-50-28	24	5,800	M. P. Ten Eyck.....	Leo Sheridan

Vessel

Captain

Chief Engineer

The Cleveland-Cliffs Steamship Co. (See Fleet No. 42)

43 **Cleveland Tankers, Inc., Standard Building, Cleveland 13**
(Owner and Operator)

Capt. L. M. Jonassen, President; William Klaas, Fleet Engineer

Comet	J. B. Oliver.....	R. J. Karol
Meteor	F. A. Bollin.....	C. B. Radike
Orion (tanker) (nee Edgewater)	H. Gregg.....	B. H. Carley
Polaris (m.s.)	N. Rosendani.....	R. Rozinska
Rocket	R. B. Robbins.....	R. Taylor

44 **Coal Carriers Corp. Ltd., P. O. Box 157, Brockville, Ont.**

W. B. Reynolds, President; W. F. Fletcher, Managing Director

Coalfax

L. McCartney.....M. Murray

Bayfax Steamships Ltd.

Bayfax

C. R. Randle Jr.

Colonial Steamships Ltd. (See Fleet No. 169)

Columbia Transportation Co. (See Fleet No. 144)

45 **Connelly Bros., 159 Ohio St., Buffalo (Owner)**

Connelly Bros. (launch)

L. Wilkins

46 **Consolidated Dredging Ltd., 500 Marine Bldg., 1405 Peel St., Montreal, Que.**
(Owner and Operator)

Thomas Fisher (tug)	Not in use	
Le Pluvier (tug)	J. Sinnott.....	V. Skillen
Lisgar (tug)	J. R. Duchesne.....	D. A. Feaver
Edward C. Whalen (tug)	A. E. Fader.....	Chas. Harrison
Whitby (derrick scow)	J. Hamilton.....	
Manseau Derrick No. 104.....	B. Boomhower	
Manseau No. 105 (dredge).....	W. R. Campbell.....	
R. M. Co. Dredge No. 10.....	D. M. Kentner	

Consolidated Steamship Co. (See Fleet No. 186)

47 **Consolidated Water Power & Paper Co., Wisconsin Rapids, Wis.**

Butterfield

Britannia (tug)

(see also Fleet No. 139)

48* **Construction Aggregates Corp., 33 No. LaSalle St., Chicago**
(Owner and Operator)

Robert E. Johnston (tug).....	Wm. Dawes	Glen Whitney
Sandcraft	John Gusland.....	
Willard L. (tug)	Wm. Dawes	

Continental Steamship Co. (See Fleet No. 186)

50

50

<i>Vessel</i>	<i>Captain</i>	<i>Chief Engineer</i>
49 Crystal Beach Transit Co. Inc., Foot of Commercial St., Buffalo (Owner and Operator) George C. Hall, President; F. L. Hall, General Manager		
Canadiana (passenger)	William Malloy.....	William Warner
50 Cullnan & Walsh, 1909 Newport Ave., Chicago (Owner and Operator) P. J. Cullnan, Port Captain		
Fred A. Britten (tug)	P. J. Cullnan.....	Robert Cullnar
Josephine (tug)	P. J. Cullnan, Jr.	Wm. Nicholas
Dalhousie Navigation Co. C.N.R. (See Fleet No. 140)		
51 Davie Transportation Ltd., 1111 Beaver Hall Hill, Montreal 1, Que. (Owner and Operator)		
A C D (m.v.)	Andre Beaudet	Leopold Guay
G D D (m.v.)	Ars. St. Pierre.....	Edward Welsh
G T D (m.v.)	H. Houde	Rene Belley
52 Detroit, City of, Fire Department, 3434 Russell St., Detroit Alex W. Henrlon, Port Engineer		
John Kendall (fire tug).....	Hugh A. MacFayden....	Harold Krieger
	Morgan Sutherland.....	Albert Cooke
53* Detroit & Cleveland Navigation Co., Wayne St., Detroit (Owner and Operator) George J. Kolowich, President		
City of Cleveland III.....	L. C. Mantel.....	Albert Murphy
City of Detroit III.....	Donald MacRae.....	Otto Kuck
Greater Detroit	L. C. DeNike.....	Edward Grobosky
Eastern States	J. B. McCullough.....	W. H. Traxler
Western States	R. J. Kiessling.....	J. L. Natress
J. P. Wells	Clyde Tobin.....	Thos. Quigley
54 Diamond Steamship Co., Ltd., The, 1322 Third Ave. East, Owen Sound, Ont. (Owner and Operator) George Hindman, President		
George Hindman	George G. Henderson.....	Wm. Dixon
55 Dominion & Owen Sound Transportation Co., Ltd., 1101 First Ave., West Owen Sound, Ont.		
Manitoulin	R. Morrison.....	Wm. Owens
Normac (m.v.)	H. G. McNeil.....	Geo. Webster
Norisle	O. S. Long	E. Gibson
56 Driftwood Lands & Timber Ltd., 510 Queen St., East, Sault Ste. Marie, Ont. (Owner and Operator) W. H. Nasi, General Manager		
Delkote (barge)	J. E. Greenway.....	R. W. Torjusson
Mitschfibre (barge)	C. B. Harrison.....	J. R. Shaw
Sulphite (tug)	H. Anderson.....	Norman McDonald
Swederope (barge)	A. Luski	George Handson

<i>Vessel</i>	<i>Captain</i>	<i>Chief Engineer</i>
57 Duluth, Missabe & Iron Range Railway Co., Duluth (Owner and Operator) P. H. Van Haven, President		
Edna G. (tug)	H. A. Johnson.....	Fabien Poulin
	J. Pinney.....	E. H. Ojard
	A. S. Branscombe.....	William Hill

Duluth Steamship Co. (See Fleet No. 186)

58 Duluth-Superior Dredging Co., Duluth (Owner and Operator)		
Gladiator (tug)	Winslow Randall.....	Albert Miller

59* **Duluth Superior Steamship Co., 418 Board of Trade Bldg., Duluth, Minn. (Owner and Operator)**

Wayne (passenger boat)	Chas. E. Nash.....	Fred Urban
------------------------------	--------------------	------------

60 **Dunbar & Sullivan Dredging Co., 2312 Buhl Bldg., Detroit (Owner and Operator)**

	E. A. Koonmen, Vice President and Secretary	
R. H. Goode (tug).....	No appointments made	
Wm. R. Panton (tug)	No appointments made	
Sachem (tug)	No appointments made	
Shaughraun (tug)	No appointments made	
Shaun Rhue (tug)	No appointments made	
Sherman VI (tug)	No appointments made	

The Eastern Steamship Co. (See Fleet No. 85)

Ecorse Transit Co. (See Fleet No. 141)

61* **Emery, W. L., Foot of Mt. Elliott Ave., Detroit 7 (Owner and Operator)**
John R. Emery, Manager

John R. Emery	L. E. Gundry.....	Leon Bourlier
---------------------	-------------------	---------------

62 **Erie Isles Ferry Co., Put-In-Bay, O., (Owner and Operator)**

R. C. Linker, President and Passenger Agent
George Long, Secretary, Middle Bass, O.

Mystic Isle	Walter J. Drickhamer.....	
-------------------	---------------------------	--

63 **Erie Sand and Gravel Co., Foot of Sassafras St., Erie, Pa. (Operator)**

Capt. J. S. St. John, General Manager and Superintendent
Erie Sand Steamship Co. (Owner)

Erie	Not in commission	
F. C. Osborn.....	Sherman Bernard.....	George Bacon
Jos. S. Scobell	Fred Mastine.....	John Jurecky

Erie Sand Steamship Co. (See Fleet No. 63)

64 **Fitz Simmons & Connell Dredge & Dock Co., 10 So. La Salle St., Chicago (Owner and Operator)**

John J. Roche, General Superintendent

F. H. Camphausen (diesel tug).....	Fred Knutsen	
Charles J. Connell (tug)	Charles Stengel.....	Charles Runyan
Frances M. Connell (diesel tug)	John C. Bruszer.....	
P. G. Connell Jr. (diesel tug).....	Jerome Bartley	
E. James Fucik (tug).....	Jens Eskeland.....	James Carey
Nassau (sand boat)		
John J. Roche (tug)	John J. Murphy.....	Joseph Spaniel

Fjell Line (See Fleet No. 79)

65 Ford Motor Co., Rouge Plant, Dearborn, Mich. (Owner and Operator)
N. J. Ahrens, Marine Superintendent

Benson Ford (m.v.) 586-62-32 24 11,750 J. Martin.....M. Mikolic
Henry Ford II (m.v.) 592-62-32 24 12,000 J. J. Pearce.....E. Burkey

66 Gallagher, B. J., Escanaba, Mich.

Bee Jay (tug)
Menasha (tug)
Neenah (tug)
Steel Derrick Scow.....

67 Garrlock, Wm., Estate of, Port Arthur, Ont. (Owner and Operator)

Glen G. Not in commission

68 Gartland Steamship Co., 208 S. LaSalle St., Chicago (Operator)

Gartland Steamship Co., Wilmington, Del. (Owner)

W. E. Fitzgerald..... Albert LaBlanc.....John Rosenberg
Sullivan Brothers Walter M. Anderson.....Charles Keul
Wm. H. Wolf Elmer Weberg.....Fred J. Harmon

69 Gayport Shipping Limited, 26 Front St., East, Toronto 1, Ont.

(Owner and Operator)

R. Fred Porter, Jr., President

Britamette W. A. Macmillan.....R. W. Lashmar
Britamlube W. F. Garrett.....J. Scott

Britamoco C. O. Sensabaugh.....J. W. Barclay
Britamoil B. J. Zink.....P. Bechervaise
Britamolene J. Scullion.....W. D. McCann

Heathdale Agencies, Ltd. (Owner)

Blue Cross (m.v.) Bert Hughes.....Karl Edwardson

70* Georgian Bay Tourist Co. of Midland Ltd., Midland, Ont.

(Owner and Operator)

City of Dover..... H. Martin.....A. Moreau
Midland City (m.v.) W. Martin.....A. Lees
Waterbus D. McGrattan

71 Gillen, Edward E. Towing Co., 626 E. Wisconsin Ave., Milwaukee

(Owner and Operator)

Ernest E. Beauvais (tug)..... John Lenz
Edward E. Gillen (tug)..... A. Jacobson.....Henry Marth
Harbour I (tug).....

Globe Steamship Corp. (See Fleet No. 186)

72 Grand Trunk Milwaukee Car Ferry Co., 1825 S. Allis St., Milwaukee 7

(Owner and Operator)

Frank W. McMullen, Resident Superintendent

(All are car ferries)

Grand Rapids Walter P. Dummer.....Joseph Shunteck
City of Milwaukee Roland J. Martin.....Edward E. Smith
Madison Ottmar A. Jahnke.....Jas. H. Mackenzie

Vessel	Captain	Chief Engineer
73* Gravel Products Co., 374 Delaware Ave., Buffalo, 2 (Owner and Operator)		
Niagara	Thos. N. Heffernan.....	DeValson Purdy
74 Great Lakes Dredge & Dock Co., 122 S. Michigan Ave., Chicago		
	(Owner and Operator)	

The following are tugs:

John F. Cushing.....	R. E. Hughes.....	J. Casey
Samuel J. Dark.....	G. Horgen.....	T. Thompson
Paul W. Dickinson.....	W. Mattick.....	J. Nolan
James A. Dubbs (nee Jas. H. Cassidy) ..	S. Barnard.....	O. Gregg
William P. Feeley.....	T. Small.....	A. Maebius
Andrew H. Green.....	T. Farrell.....	J. Hilton
Martin G. Hausler, Jr.	A. Jewell.....	M. Cross
George H. Jackson.....	N. Merrill.....	W. Whaley
William H. Kinch.....	W. Conway.....	F. Raines
William A. Lydon.....	A. Bishop.....	A. Smith
John A. McCormick.....	E. Boroughs.....	J. Lacey
Dr. Walter G. McGuire.....	J. McNamara.....	J. Grady
Marion	T. Thompson.....	H. Sprague
Gen. E. M. Markham.....	W. Farrell.....	J. Healey
Martha C.	T. Stengel.....	O. Nordquist
Mary C.	L. Bruszer.....	E. Lemarb
Oscar F. Mayer.....	J. McNamara.....	J. Grady
James J. Murray.....	M. Bebeau.....	O. Tollefson
L. P. Smith.....	J. Wilks.....	T. Higgins
Chas. E. Trout.....	W. Angell.....	E. Rodberg
Harry B. Williams.....	W. Ullrich.....	J. Colamara

The following are dredges:

Buffalo	G. Holdorf.....	D. Sheehan
Chicago	A. Richard.....	C. Peterson
Crest	L. El. Bouchard.....	C. P. Sheltman
Illinois	F. Brewer
Majestic	J. Frea.....	F. Schuyler
Michigan	L. E. Gallagher.....	F. Dummer
Mogul	W. Parrish.....	J. Hoynosh
New York
Ohio
Scout
Toledo	George Keay.....	D. Montgomery
War Horse	O. Kutzner.....	M. Welsh
B-7	J. Canan.....	J. Prout
M-9	J. Koster.....
No. 54	L. Larson.....	S. Lund
No. 55	J. Hoehnan.....	H. Marquette
No. 56	V. Jones.....	H. Krieg

75* Great Lakes Lumber & Shipping, Ltd., 132 N. May St., Fort William, Ont.
(Owner and Operator)

Blanche H. (barge)
W. E. Hunt (tug).....
E. E. Johnson (tug).....
Oscar Lehtinen (tug).....
Marguerite W. (tug).....
Merle H. (barge).....
Lawrence H. Shaw (tug).....

Vessel

Captain

Chief Engineer

76 Great Lakes Steamship Co. Inc., 1542 Rockefeller Bldg., Cleveland 13

(Owner and Operator)

J. Burton Ayers, President; Harry Cowan, Fleet Engineer

J. Burton Ayers.....	605-60-35	24	12,000	Frank B. Parsons.....	Walter Hanssen
John B. Cowle.....	525-58-31	24	10,400	Robert W. Goodwin.....	J. R. Goodrich
Denmark	440-56-28	12	8,300	Edward Jacobs.....	W. A. Goers
John Dunn, Jr.	504-58-30	24	9,800	Daniel O'Boyle.....	Fred Antons
J. F. Durston.....	432-52-29	12	7,300	Eugene O. Peo.....	Wm. B. Ray
Finland	549-56-31	24	10,400	Herbert L. Stewart...	James C. Browne
J. H. Hillman, Jr.	605-60-35	24	12,000	Charles Gonyaw.....	Wm. R. Stewart
Charles Hubbard.....	438-52-28	24	7,600	Carl E. Holmes.....	Earl Wiegand
A. E. Nettleton	525-55-31	24	9,800	William Morton.....	Fred Shovar
Norway	504-58-30	12	9,800	Melvin Edwards.....	Edward H. Schmidt
Hurlbut W. Smith.....	414-50-28	24	6,800	Edward F. Magill.....	Brian Seeley
Lyman C. Smith.....	525-55-31	12	9,800	Robert J. Grekowicz...	W. E. Gallagher
Sweden	414-50-28	24	6,800	Lester H. Jones.....	Chester Steffanides
Smith Thompson	432-52-28	24	7,400	Charles Solfrank....	William Engelhardt
Horace S. Wilkinson..	580-60-32	12	11,500	George Manuel.....	Ernest Potthier

77 Great Lakes Towing Co., 1800 Terminal Tower, Cleveland 13

(Owner and Operator)

The company deems it impractical to announce appointments for the reason they are largely made by local managers at various ports and tugs are double and triplecrewed. The company's fleet includes:

Tugs Alabama, America, Arizona, California, Colorado, Conneaut, Connecticut, Delaware, Dunkirk, Favorite, Florida, Georgia, Idaho, Illinois, Indiana, Iowa,

Kansas, Kentucky, Louisiana, Maine, Maryland, Massachusetts, Michigan, Minnesota, Mississippi, Missouri, Montana, Nebraska, Nevada, New Hampshire, New Jersey, New Mexico, New York, North Carolina, North Dakota, Ohio, Oklahoma, New Oregon, Pennsylvania, Racine, Rhode Island, Superior, Tennessee, Texas, Toledo, Utah, Vermont, Virginia, Washington, Wisconsin, Wyoming, Yale.

Lighters T. F. Newman, Pontoon, Reliance.

78* Great Lakes Training Ship, Inc., The, 603 Hanselman Bldg., Kalamazoo, Mich.

Morning Star (schooner)..... Frank F. Ford.....Paul S. Heath

79 Great Lakes Transatlantic Inc., 333 N. Michigan Ave., Chicago 1
Fjell Line

Carmelfjell

Hemsefjell

Makefjell

Ornefjell

Ravnefjell

Rutenfjell

Svanefjell

Ternefjell

80 Great Lakes Transport Corp., 3112 Book Bldg., Detroit 26
(Owner and Operator)

Fueloil (barge)

Panoll

Pure Oil Co. (Owner)

L. S. Wescoat..... C. V. Nissen.....Shirley Thompson

<i>Vessel</i>	<i>Captain</i>	<i>Chief Engineer</i>
81 Gulf & Lake Navigation Co. Ltd., 10 St. James St., West Montreal, Que.	(Owner and Operator) F. H. Godin, President	
Birchton	C. A. Deschenes.....	F. V. Gould
Cedarton	W. L. Mahaney.....	O. Rodrigue

82 Gulf Oil Corp., Marine Dept., 17 Battery Pl., New York	(Owner and Operator) Willard F. Jones, General Manager	
Harmony	E. K. Hellum.....	C. C. Barlow
Paratex	J. F. Erbse.....	L. Spring
Regent (m.v.)	A. M. Bowen.....	A. A. Robin
Supreme	Neil Smith	H. Kramer

83 Hall Corp. of Canada, 637 Common St., Montreal, Que.	(Owner and Operator) A. Hutchinson, President	
Coniscliffe Hall	D. Larosee.....	Jos. Boutin
Eaglescliffe Hall	C. Sauvageau.....	Aime Paquette
Leecliffe Hall	J. Ivany.....	A. Bibeau
Meadcliffe Hall	H. L. Davis.....	Dollard Gervais
Northcliffe Hall	R. Sinclair.....	J. Boulanger
Rockcliffe Hall	Geo. Dorais.....	Arthur Lafond
Southcliffe Hall	T. L. Davis.....	W. D. Covey
Sternecliffe Hall	W. M. Bowen.....	W. H. Lamoureux
Westcliffe Hall	Lionel Larosee.....	W. J. Lumley

George L. Eaton	L. Mongrain.....	George B. Fleming
John H. Price.....	A. E. Brown.....	Thomas Hebert
Walter B. Reynolds.....	John Skott.....	Napoleon Arcand

84 Hamilton Harbour Commissioners, 21 Main St., East, Hamilton, Ont.	G. J. Corson.....	
Hamiltonian	W. T. Smith	

Hanna Coal & Ore Corp. (See Fleet No. 85)

85 Hanna, M. A., Co., The, Agents, Leader Bldg., Cleveland 15 (Operator)	Hanna Coal & Ore Corp. (Owner)	
Edward J. Berwind.....586-62-32	24 12,400	G. C. Hibbard.....S. E. Atkinson
Emory L. Ford.....580-60-32	12 12,200	W. J. Lane.....C. F. Hoffman
Fred G. Hartwell.....596-64-33	12 13,400	W. R. Maitland.....J. F. Auttersen

The Eastern Steamship Co. (Owner)

Joseph Wood.....504-54-30	12 9,300	L. A. Foster.....H. S. Scarlett
---------------------------	----------	---------------------------------

The La Belle Steamship Co. (Owner)

La Belle	504-54-30 12 9,300	C. W. Young.....L. A. Stoltz
----------------	--------------------	------------------------------

National Steel Corp. (Owner)

Carle C. Conway.....532-56-31	12 10,200	S. Sorensen.....L. E. Viau
George R. Fink.....532-56-31	12 10,200	R. H. Brown.....W. H. Scott
A. E. Heekin.....525-58-31	12 10,500	E. F. Rice.....H. A. Clark
L. W. Hill.....525-58-31	12 10,500	N. F. Peltier.....W. R. Johnson
Edmund W. Mudge 504-54-30	12 9,600	C. T. Gallagher.....W. Soderstrom
David M. Weir.....532-56-31	12 10,200	R. R. Redecker.....E. Pelly
Ernest T. Weir.....580-60-32	12 11,800	R. F. Leng.....J. Watt

Vessel

Captain

Chief Engineer

The Virginia Steamship Co. (Owner)

W. D. Crawford...504-54-31 24 9,500 G. A. Sinkler.....A. L. Spragge

86 Hanna Transportation Co., 9331 So. Ewing Ave., Chicago (Operator)

Materials Service Corp. (Owner)

R. E. Doville (m.v.).....120'5"-27'5"-7 Rufus Volkman.....Jacob Kahilaninen

Heathdale Agencies, Ltd. (See Fleet No. 69)

87 Hindman Transportation Co. Ltd., 908 Second Ave., East, Owen Sound, Ont.

(Owner and Operator)

George Hindman, President

Howard Hindman.....Charles McKaig.....Walter Lambert
Vigilant (barge).....Chas. Loucks.....
Racey (tug).....Harold Size.....

88* Huntsville Lake of Bays & Lake Simcoe Nav. Co. Ltd., Huntsville, Ont.

(Owner and Operator)

(These steamers are operated only on inland lakes, Muskoka District)

Algonquin.....Robt. J. Parsons.....Robert Johnston
Bigwin.....W. P. Tinkiss.....Wm. McLean
Iroquois.....A. E. Pink.....W. G. Murray

89 Huron Transportation Co., 1325 Ford Bldg., Detroit (Owner and Operator)

C. M. Adams, Port Captain

John W. Boardman...334-55-28 5,000 Thompson Campbell....Arthur Johnson
S. T. Crapo.....384-60-29 7,200 Donald McLachlan.....Walter Kammer
Samuel Mitchell.....293-40-25.5 2,300 Kenneth Sanchagrin....Gilbert Nokland

90 Huron Tug and Supply Co., Carroliton Rd., Saginaw, Mich.

(Owner and Operator)

William J. Tarrant, President; Dale R. McLaughlin Yard Manager

Vigilant (tug).....Officers unassigned

91 Hutchinson & Co., 1508 Rockefeller Bldg., Cleveland 13 (Operator)

Frank W. Wolf, Fleet Engineer; John Rutledge, Fleet Captain

Buckeye Steamship Co. (Owner)

Sir Wm. Fairbairn...414-46-28 24 6,100 David Lewis.....Charles Brasher
Harvard.....461-50-28 24 7,000 Richard Galbreath.....W. H. Knapp
Harry W. Hosford...506-50-28 24 7,700 O. H. Keller.....E. R. Liberty
John T. Hutchinson.595-60-35 24 12,000 Harold Jacobsen.....O. B. Nordstrom
Simon J. Murphy...428-52-28 24 6,700 A. C. McLean.....J. Eskelin
Princeton.....454-50-28 24 7,000 Chas. Butler.....John MacIver
Geo. Stephenson...408-48-28 24 6,100 J. A. Dupuie.....F. R. Kiska
Andrew S. Upson...380-52-28 12 6,600 Johp Mier.....Arthur Bristow
Magna (barge).....352-44-26 24 5,600 Rudolph Van Reen....George Anderson
Maia (barge).....376-48-26 24 5,600 Howard Anderson.....Frank Ziegler
Manilla (barge)....436-50-29 24 7,200 Chester Nichol.....Milton Hasler
Marsala (barge)....436-50-28 24 8,000 Albert Tobynne.....John Miller
John Smeaton (barge)446-50-30 24 7,400 Mitchel Johnson.....Fred Summerfield

Inland Steel Co. (Owner)

E. J. Block.....532-56-31 12 10,100 A. Fisher.....Alen Seelye
Joseph Block.....549-56-31 12 10,300 W. S. Walsh.....A. A. Wolf
L. E. Block.....596-64-33 24 13,400 A. Hoel.....Alex Donald
Philip D. Block....580-60-32 24 11,800 F. A. Tomlin.....Justin Kronberg

Vessel

Captain

Chief Engineer

Pioneer Steamship Co. (Owner)

J. S. Ashley	504-54-30	12	8,860	H. P. Murphy	R. D. Burt
A. A. Augustus	504-54-30	12	9,500	A. Kristiansen	John Ruddock
Frank Billings	444-56-30	12	8,400	R. Van Epp	Louis Schroder
James E. Ferris	444-56-30	12	8,400	S. Anderson	John Atkins
Donald B. Gillies	525-55-31	12	10,100	H. W. Frilay	John Linden
C. L. Hutchinson	580-58-32	12	11,250	T. A. Johnson	A. Tenwick
W. H. McGean	480-56-30	12	9,500	W. D. Weborg	E. J. Fournier
Price McKinney	432-54-28	24	7,300	A. Knudson	Merle Buell
John S. Manuel	444-56-30	12	8,400	Claire Duclon	Albert Bingle
Wm. A. Paine	480-52-30	12	8,500	L. W. Smith	O. T. Biddle
Clarence B. Randall	595-60-35	24	12,000	H. J. Scheible	Donald Swartz
John Stanton	504-54-30	12	9,500	E. P. Maxim	C. McGeehan
J. J. Sullivan	532-56-31	12	10,300	M. J. Johnson	K. Petterman
David P. Thompson	554-58-32	12	11,000	H. A. Johnson	John Paytosh
G. A. Tomlinson	504-52-30	12	9,500	Wm. Schlegel	Peter B. Johnson
James P. Walsh	480-52-30	12	8,400	A. G. Regan	W. Pallas

92 Imperial Oil Ltd., Marine Department, 56 Church St., Toronto 1, Ont.

(Owner and Operator)

W. R. Smeltzer, Manager; A. E. Gammon, Assistant Manager

Imperial Cobourg	C. G. Sloane	J. Owen
Imperial Collingwood	C. R. Dyon	A. W. Adams
Imperial Cornwall	E. A. Davies	G. J. Merrick
Imperial Goderich	P. W. Perry	W. L. McCormack
Imperial Kingston	P. Butters	P. I. Larmand
Imperial Lachine	A. G. Knight	V. C. Irvine

Imperial London	W. V. Matthews	J. Maxwell
Imperial Midland	G. R. Williamson	T. C. Lovegrove
Imperial Ottawa	J. Burns	H. E. Eisan
Imperial Sarnia	T. K. R. Knight	R. D. Knox
Imperial Simcoe	H. A. McLellan	W. G. Sinclair
Imperial Welland		
Imperial Whitby		
Imperial Windsor	F. W. Ostartahl	C. A. Bailey

93 Inland Lines Ltd., 635 Common St., Montreal, Que. (Owner and Operator)

Damia	J. E. MacLeod	J. Marchand
Saracen	T. W. Nichols	J. H. Smith

Inland Steel Co. (See Fleet No. 91)

Inter Ocean Steamship Co. (See Fleet No. 186)

The Interlake Steamship Co. (See Fleet No. 150)

94 International Harvester Co., 180 N. Michigan Ave., Chicago 1

(Owner and Operator)

A. C. Friedsam

The Harvester	525-58-31	12	10,500	Charles Baake	H. A. Owens
The International	586-60-32	12	11,800	J. B. Routhier	J. L. Young

95 International Transit Co., The, 527 Queen St., East, Sault Ste. Marie, Ont.

(Owner and Operator)

Agoming (m.s.)	G. E. Harrison	G. M. Harrison
	W. A. Rouse	J. M. Caufield
	W. W. Harron	N. Kunkel
James W. Curran (m.s.)		

<i>Vessel</i>		<i>Captain</i>	<i>Chief Engineer</i>
96	Interstate Steamship Co., Union Dock, Ashtabula Harbor, Ohio (Owner and Operator) P. L. Tietjen, President; T. H. Burger, Superintendent		
B. F. Jones.....	530-56-31 24 10,100	A. L. Olsson.....	C. H. Cosnett
Willis L. King.....	580-58-32 12 11,400	A. L. Christensen....	George Grunthamer
James Laughlin	530-56-31 24 10,100	H. R. Fairfield.....	James Hineman
Thomas Walters	580-58-32 12 11,400	W. C. Humphrey.....	Alvin Sicken
97*	Island Dock, Inc., Kingston, N. Y. (Owner and Operator)		
Cleveland (diesel electric).....		Alex Gustavson.....	Alfred Kuntz
Detroit (diesel electric).....		Harry Freeman.....	Peter Eidvek
98	Ivey & Sons, T. A., Port Dover, Ont.		
T. A. Ivey (barge).....		W. Winters.....	J. Walsh, Jr.
Iveyrose (tug)		Peter MacDonald.....	John Walsh
99*	Jeremy, David B., 331 W. 5th St., Port Clinton, Ohio		
Islander		David B. Jeremy.....	Clarence Jeremy
100*	Johnson Transportation Co., 909 Majestic Bldg., Detroit 26, Mich.		
W. D. Rees.....		John McDonald.....	George D. Peterson
101	Jupiter Steamship Co., 821 Reckefeller Bldg., Cleveland 13 (Owner and Operator) W. C. Secord, Manager		
Jupiter	346-48-28 10 5,000	Floyd Dossett.....	H. B. Muhltnr
102	Kelley Island Lime & Transport Co., Sandusky, O. (Owner and Operator)		
Hydro		Alex Bourne.....	Andrew Kentos
Kelley Island		Eckhart Lange.....	Russell Woodrow
John M. McKerchey.....		Horace Johnson.....	H. E. Thomas
Rockwood		Millard S. Brewer.....	Oscar Noak
103	Keystone Transports Ltd., 360 St. James St., West, Montreal 1, Que. (Owner and Operator) Capt. J. Milne, Operating Manager		
Keybar		W. J. Coffin	R. Garrlock
Keybell		E. V. Smith	D. Annand
Keydon		E. F. Anderson	George Clark
Keynor		F. Dishaw	M. Bechervaise
Keyport		W. V. Smith	A. H. Horton
Keyshy		W. J. Brown	R. J. Ascah
(nee Trenora)			
Keystate		E. Davidson	A. Beaupre
Keyvive		George Brown	George Baker
Keywest		E. M. Walsh	J. Larsen
(nee Surewater)			
	Kinsman Transit Co. (See Fleet No. 180)		
104	Kishman Fish Co., Vermillion, O. (Owner and Operator) (All are tugs)		
Edward K.		Kenneth Keller	
H. B. Kishman		John Miller	
Lester K.		Shirley Lumley	
Myron K.		Wallace Hall	
Roger K.		Elsworth Dickerhoff	

Vessel

Captain

Chief Engineer

The La Belle Steamship Co. (See Fleet No. 85)

105* La Cie de Traverse Valleyfield-Coteau Dulac, Ltd., Valleyfield, Que.
Beauharnois Donat HamelGeorge Houde

Lake Erie Coal Co. Ltd. (See Fleet No. 106)

106 Lake Erie Navigation Co. Ltd., Walkerville, Ont. (Operator)
Lake Erie Coal Co. Ltd., Walkerville, Ont. (Owner)
L. H. Kent, Chief Marine Engineer, Ludington, Mich.
Alexander Leslie R. Alexander ...W. J. Alvin Emrick

107 Lake Erie Sand & Transport Co., 410 Broadway Bldg., Lorain, O.
(Owner and Operator)
Erie (sandsucker) Paul BrownCharles Spademan
George Edwards (fishing tug)

108* Lake Sand Corp., 3210 E. 95th St., Chicago 17 (Owner and Operator)
Gilbert S. OlsonH. Ferry

109 Lake Tankers Corp., 20 Exchange Pl., New York (Owner and Operator)
Martha E. Allen (m.v.) F. W. DixonP. J. Gallagher

110 Lakeland Tankers, Ltd., 36 Toronto St., Toronto 1
George R. Donovan Jr., Manager
Lubrolake M. BibeauA. L. Hiltz
Makaweli F. P. McCarthyE. A. Borland

111 Lakes & St. Lawrence Navigation Co. Ltd., Cardinal, Ont.
(Owner and Operator)
A. S. Fraser, Operating Manager
Casco W. J. MillsS. E. Moore

Leaf Barges Division (See Fleet No. 118)

112 Levis Ferry Co. Ltd., Champlain Market, Quebec, Can. (Owner and Operator)
L. Maurice Carrier, General Manager
Bienville Rolland Guillemette ...Camille Bouchard
Colbert Robert MassonAlphonse Beaudoin
Cyrille MartelWilfred Aubin
J. M. ForguesAlphonse Chartre
Louis Jolliet Ulderice LemieuxJoseph Bernier
Henri PouliotL. G. Mercier
J. M. ForguesN. Simoneau

113 Lorain Coal & Dock Co., The, Terminal Tower, Cleveland 13
(Owner and Operator)
H. L. Gates, Manager
Lorain (fuel lighter) H. J. ZiebaRichard Newkirk

114 Luedtke Engineering Co., Frankfort, Mich. (Owner and Operator)
Karl E. Luedtke George GeniesseStanley Lancewicz
Erich R. Luedtke Eli DemeuseAlmon Smith

50

50

<i>Vessel</i>	<i>Captain</i>	<i>Chief Engineer</i>
115 Lyons Construction Co., Whitehall, Mich. (Owner and Operator)		
Amaranth		
Hyacinth		
Marigold		
Montauk (barge)		

116 Lyons' Navigation Co., 910 Lakeview Dr., Lorain, O.		
	J. P. Lyons, Marine Supt.	
North Shore	Mark Cross	Willis Cross
White Swan	R. B. Lyons	Arthur Larsen

117 Mackinac Transportation Co., St. Ignace, Mich. (Operator)		
	Mackinac Transportation Co., Detroit (Owner)	
	M. J. Bishop, Port Captain	
Chief Wawatan (carferry)	M. J. Bishop	Ivo C. Coveyou
Sainte Marie (carferry)	Alexander Tromblay	Clayton B. Cheeseman

118 Marine Industries, Ltd., Sorel, Que. (Owner and Operator)		
General Brock (dredge)	J. Clouston	Thomas Carrie
Bruxelles (dredge)	J. P. Bonin	A. Demers
Manseau 101 (dredge)	Z. Guerdar	R. Bergeron
General Montcalm (dredge)	E. Gagnon	A. Larsen
New Welland (dredge)	A. Simoneau	G. Begin
Rock General IV (Sweeper)	B. Valois	E. Houde
Rock General II (Drill)	J. Younger	A. Godin

Beancour (tug)	P. Larosee	A. Salvas
Deschallons (tug)	Nap. Mongeau	J. Latour
Descheneaux (tug)	R. Desmarais	G. Demers
Dramis (tug)	D. Beaudet	O. Mandeville
Glen Valley (tug)	W. Lavallee	P. Ethier
Hullman (tug)	Jos. Mongeau	A. Vilandre
Geo. McKee (tug)	C. Millette	J. Falardeau
Capt. Morrison (tug)	E. Duchesne	E. Lemay
North Star (tug)	W. Picard	R. Forcier
North Wind (tug)	E. Larosee	G. Labrecque
Ostrea II (tug)	A. Cournoyer	E. Lesvesques
Captain Simard (tug)	U. Tremblay	N. E. Heppel
Tanac 257 (tug)	S. Traversy	W. Boulianne

Branch Lines Limited

Elmbranch (tanker)	G. Blais	T. Duchesne
Firbranch (tanker)	A. B. Tanner	Y. Durand
Oakbranch (tanker)	W. Carre	A. Sheridan
Pinebranch (tanker)	R. Patenaude	C. Mondor
Poplarbranch (tanker)	L. Chapdelaine	M. Himmelman
Sprucebranch (tanker)	L. Legris	H. Epaule

Leaf Barges Division

Ashleaf	P. Morrissette	Jos. Legendre
Aspenleaf	J. H. Lalonde	A. Mondor
Bayleaf	J. P. Michaud	W. Dionne
Palmeleaf	M. Bibeau	H. Lemieux

<i>Vessel</i>	<i>Captain</i>	<i>Chief Engineer</i>
119*	Marine Transit Co., 131 E. Wacker Drive, Chicago 1 (Owner)	
American	Lars Gunderson	Anton Wirth
Edward W. Fenwick	John Pellino	Norbert Schelot

Materials Service Corp. (See Fleet No. 86)

120	Matton, John E. & Son, Inc., Waterford, N. Y. (Owner and Operator)	
	(All are tugs)	
John A. Becker	Maurice Vermet	Arthur Armstrong
Matton #20	John Maloney	William VanBramer
Matton #21	Thomas VanAllen	Theodore Kelly
Edna M. Matton	James Clinton	Earl Clark
Margaret Matton	Fred Noel	William Bogart
John E. Matton	George Bragg	Edward Kingston
Ralph E. Matton	John Ray	William Pengeley
H. A. Meldrum	Henry Roberts	Albert Squires
121	McCarthy Steamship Co., T. J., 3362 Wight St., Detroit 7, Mich.	
	(Owner and Operator)	
	T. J. McCarthy, President and General Manager	
George W. Mead ... 387-50-28	6,200	A. J. Chickonoski ... Charles T. Dalzell
T. J. McCarthy ... 430-50-28'6"	7,300	J. A. Patterson
George H. Ingalls ... 430-50-28'6"	7,300	T. R. Miller
		Robert Edgar
		Charles Dufty
122	McColl-Frontenac Oil Co., Ltd., Yardley House, Toronto, Ont. (Operator)	
	F. W. Cowie, Marine Superintendent	
	S. S. Texaco Brave Ltd., Montreal (Owner)	
Texaco Brave	E. L. Pyette	J. M. Kettles

S. S. Texaco Chief Ltd., Montreal (Owner)

Texaco Chief

A. H. Foote		C. G. Myatt
-------------------	--	-------------

S. S. Texaco Warrior Ltd., Montreal (Owner)

Texaco Warrior

I. L. Mateer		K. A. Fraser
--------------------	--	--------------

123 **McLean & Sons Ltd., A. B. Brock St. Dock, Sault Ste. Marie, Ont.**

(Owner and Operator)

Capt. R. A. McLean, President; John McLean, Secretary-Treasurer;

A. B. McLean, Vice President

Batchewana (tug)
Miseford (tug)	William Bennett
Derrick Scow No. 3	Charles Johnson
Derrick Scow No. 4	Russell Garniss
Derrick Scow No. 5

124 **McNamara Construction Co. Ltd., Industrial St., Leaside, Toronto 12, Ont.**
(Owner and Operator)

Allen M. (derrick)
Billie M. (tug)
Connie M. (tug)
(nee Alexander B.)
Flora M. (tug)
Florence M. (tug)
Foundation Alice (tug)
Foundation Joan (tug)
George M. (derrick)

Vessel

Captain

Chief Engineer

George M. Jr. (dipper dredge)
 Harold M. (derrick)
 Howard M. (dipper dredge)
 Mike M. (landing barge)
 Pat M. (landing barge)
 Paul H. M. (dipper dredge)
 Paul M. Jr. (suction dredge)
 Sidney M. (suction dredge)
 Skipper M. (tug)
 Derrick No. 5

125 McQueen, Capt. J. E., Amherstburg, Ont. (Owner and Operator)

Atomic	J. E. McQueen	J. Goodchild
Patricia McQueen	A. Morrison	R. Ainslie
Henry Stokes	M. MacDonald	J. Fox
Commander J. E. (dredge)		O. Hamilton
Malden (barge)		

126 Meagher & Sons, W. J., 24th and Water Sts., Bay City, Mich.

Elder (tug)
 Shamrock (derrick)

**127 Merritt-Chapman & Scott Corp., 1648 Standard Bldg., Cleveland 13
 (Owner and Operator)**

Alpena (tug)
 Aubrey (tug)
 Jane "T" (tug)

Sherman H. Serre (tug)
 William A. Whitney (tug)
 Amazon (derrick scow)
 Cherokee (derrick scow)
 Chippewa (derrick scow)
 Clyde (derrick scow)
 Comanche (derrick scow)
 Gotham (derrick scow)
 No. 4 (derrick scow)
 No. 5 (derrick scow)
 M. Sullivan (dredge)

**128 Michigan Atlantic Corp., 60 E. Forty-second St., New York
 (Owner and Operator)**

Michigan (m.v.) Leroy Decker T. Johnson

**129 Michigan Limestone & Chemical Co., Rogers City, Mich.
 (Owner and Operator)**

Tug Central	R. G. Cumming	Alfred Quade
Tug Kellers	James Cook	Joseph Buck
Tug Rogers City	E. G. Newhouse	Frank Flewelling
	Russell Lamb	Frank Lamp

130 Michigan State Ferries, St. Ignace, Mich. (Operator)

Michigan State Highway Dept., Lansing, Mich. (Owner)

Charles M. Zeigler, Commissioner; Capt. John Kelsner, Marine Superintendent

<i>Vessel</i>	<i>Captain</i>	<i>Chief Engineer</i>
City of Cheboygan	Harry J. McNulty	Lloyd V. Backie
City of Munising	C. Peter Everson	Leo Fogelsonger
City of Petroskey	Harold Hill	Douglas Bynorth
The Straits of Mackinac	James Blain	George Thompson

131 Midland Steamship Line, Inc., 2101 Terminal Tower, Cleveland 13

(Owner and Operator)

Baird Tewksbury, President; Michael K. Tewksbury, Vice President and Manager	
John W. Davin504-54-29 12 9,300	H. C. MaltbyAlexander Karro
Michael Gallagher ...420-54-28 12 7,300	T. B. BigelowGeorge E. Larson
J. H. Macoubrey ...380-50-28 12 6,700	Vincent W. Hoover ...John W. Erickson
W. G. Pollock420-52-28 12 7,300	David O. HowlandOtto O. Kraft
E. N. Saunders Jr...504-55-30 12 9,800	Raymond G. McGarry .Joseph F. Talder
Carmi A. Thompson..525-58-31 12 10,500	William D. Hampton.George W. Kroening
John C. Williams ...525-55-31 12 10,000	Harry H. MillerAlex M. Houston

132 Miller Boat Line, Put-in-Bay, Ohio

South Shore	Cletus MarchFranklin Ohlemacher
West Shore	Robert SchmidtClarence Crowe
Avon 11'	Ethan FoxKenny Chapman

133 Milwaukee, City of, Fire Dept., Milwaukee

Edw. E. Wischer, Chief of Fire Department
(All vessels are fireboats)

M. F. D. No. 15	Edw. E. Wischer ...Rudolph F. Tesnow
Torrent	Edw. E. Wischer ...Rudolph F. Tesnow

134 Mississauga River Improvement Co. Ltd., Blind River, Ont.

Waubaushene	William DecotaDougall McLeod
-------------------	------------------------------------

135 Mohawk Navigation Co. Ltd., 635 Common St., Montreal, Que.

(Owner and Operator)

R. A. Campbell, Managing Director

Alfred Krupp (barge)352-44-26 .. 5,700	C. Brunet
F. V. Massey	W. A. BlackwellH. Bastien
Capt. C. D. Secord .346-48-24 .. 9,000	J. A. FelkerJ. M. Gillies
Sir Thomas Shaughnessy480-52-30 .. 9,000	A. J. IrvineF. A. Collier

136 Montreal Harbour, National Harbours Board, Montreal, Que.

(Owner and Operator)

Capt. J. P. Dufour, Harbour Master

Sir Hugh Allan (tug)	E. LavoletteJ. C. Jacques
Glenada (tug)	L. PlanteC. Peloquin
Glenkeen (tug)A. G. Chayer
N.H.B. Floating Crane No. 1	E. BourbonnaisR. Guertin
N.H.B. Derrick No. 3P. Chevrier
N.H.B. Derrick No. 6E. Lemoine

Morrow SS Co. (See Fleet No. 144)

137 National Sand & Material Co. Ltd., 402 Harbor Bldg., Toronto, Ont.

Charles Dick	R. E. LawsonCorey Harvey
--------------------	--------------------------------

National Steel Corp. (See Fleet No. 85)

138 Neuman Boat Line Inc., Foot of Columbus Ave., Sandusky, O.		
Challenger	Ernest E. James	
Commuter	Robert Swanson	
Mascot	Harold Neuman	
139 Newaygo Timber Co. Ltd., Port Arthur, Ont. (Owner) (Subsidiary of Consolidated Water Power & Paper Co.)		
Rocket	Arthur H. Harpell	Roy Hedman
(See also Fleet No. 47)		
140 Niagara, St. Catherines & Toronto Railway Co., St. Catherines, Ont. Canadian National Railways (Owner) J. R. Empringham, Superintendent		
Northumberland	William Webb	Arthur J. Burton
Dalhousie Navigation Co. C.N.R. (Owner)		
Dalhousie City	Joseph R. Merriam	William M. Stewart
(See also Fleet No. 29)		
141 Nicholson Transit Co., P.O. Box 66, River Rouge, Mich. William Nicholson, President		
Canopus	H. Booth Sr.	R. Walker
Charles Donnelly	D. Tobin	S. Daucher
Fellowcraft	J. McKinnon	
Ironwood		D. Binder
Adrian Iselin		
Penobscott	H. Nicholson	H. Kammer
Perseus	L. Guyette	A. Lofgren
E. C. Pope	H. Burch	C. Rexford
Sonora	E. Cullen	F. Horton
Steel King	N. Swan	H. Lozen
Sultana	W. Edgar	B. Swanson
Tampico	T. Legault	J. Rumble
James Watt	O. Meling	E. Colclough
Wells	J. H. Walton	S. Katcher
	C. Tobin	T. Quigley
Ecorse Transit Co.		
Mataufa	E. Massman	B. Beauchamp
142* Northern Paper Mills Ltd., Hansen, Ont. A. K. McNaughton, Secretary		
Norco	Alex R. Cleave	Howard Hazlett
143 Northwest Steamships Ltd., 59 King St., East, Toronto, Ont.		
A. A. Hudson	D'Alton Hudson	B. G. Adam
Superior	C. Bell	A. E. Hurst
144 Oglebay, Norton & Co., 1208 Hanna Bldg., Cleveland 15 (Operator) W. C. Dressler, Vessel Manager; H. F. Wiersch, Marine Superintendent; F. J. Deemer, Chief Engineer; J. A. Fuhrman, Fleet Engineer		
The Columbia Transportation Co. (Owner)		
Buckeye	413-52-28	6,800 David Huser
		Wendle Freeman

Vessel		Captain	Chief Engineer	
Harry T. Ewig	...346-48-28	5,000	Peter PulcerH. A. Britz
Joseph H. Frantz	..592-62-32	24 12,000	Bert LambertChris Williamson
Charles W. Galloway	504-54-30	24 9,000	Joseph GreforCharles Leitch
Howard M. Hanna, Jr.504-54-30	24 9,000	Joseph RichardsonClarence Gustin
W. W. Holloway	..532-56-31	12 10,000	N. C. LarsenJames Eustice
O. S. McFarland	..360-50-28	5,800	Angus MacDonaldJohn Arbter
E. G. Mathiott360-48-28	24 4,400	Andrew GreeneWalter Wood
(self-unloader)	..360-48-28	24 4,400	Walter BorresenMagnus Bertelsen
J. Claire Miller	..525-55-31	12 9,700	Vernie KoskiCarl Grant
R. E. Moody345-48-28	24 4,200	Harry EllsmereEd Ax
(self-unloader)	..345-48-28	24 4,200	Johannes OlsenOscar Peterson
David Z. Norton	..480-52-30	24 8,200	Cliff PatnodeLeonard Lundry
Crispin Oglebay (self-unloader)532-58-31	12 10,000	Charles CoxPeter Carlsen
(nee S. B. Way)	532-58-31	12 10,000	Edgar ViallGeorge McCullough
G. G. Post346-48-28	5,000	Charles DaileyClark Swartz
W. C. Richardson	..420-52-28	24 7,300	James GegenheimerKenneth Johnson
J. R. Sensibar530-56-31	12 9,500	Robert J. Paisley	Morrow SS Co. (Owner)
(self-unloader)	..530-56-31	12 9,500	(self-unloader)	..410-48-28 24 6,200
Wm. F. Stifel420-52-28	24 7,300	Donald AstonGeorge Meno
Wolverine412-48-28	24 6,000	Paisley SS Co. (Owner)	
Robert J. Paisley	Morrow SS Co. (Owner)		Alex GilliesJohn D. Willis
(self-unloader)	..410-48-28	24 6,200	Donald AstonGeorge Meno
Ben E. Tate	Paisley SS Co. (Owner)		Alex GilliesJohn D. Willis
(self-unloader)	..356-50-28	24 5,700	Alex GilliesJohn D. Willis

The Saginaw Dock & Terminal Co. (Owner)

Carrollton241-43-22 2,500 William PhillipsFrank Wilson

145 Ontario Car Ferry Co. Ltd., 384 St. James St., Montreal, Que.

P. H. Scott, Manager

Ontario No. 1 (car ferry) R. A. WrightP. Knight
 Ontario No. 2 (car ferry) W. BrysonC. Morrison

146 Ottawa Department of Public Works, Ottawa, Ont.

(Owner and Operator)

Hercules (tug) Asel Bartlett
 P. W. D. No. 117 (dredge) John Howell

Overlakes Freight Corp. (See Fleet No. 21)

Paisley SS Co. (See Fleet No. 144)

147 Paterson Steamships Ltd., Fort William, Ont. (Owner and Operator)

E. B. Sutherland, General Manager

Upper Lake Vessels

Altadoc K. C. ClarkE. C. Featherstone
 Bricoidoc C. E. RobinsonE. W. Sparling
 Canadoc A. H. SimpellW. E. Mooney
 Collingdoc (barge) W. Kusik
 (nee Alfred J.)

Vessel
Fort Willdoe
Kenordoc (barge)
Mantadoc
Ontadoc
Owendoc (barge) (nee Florence J.)
Portadoc (barge)
Prindoc
Quedoc
Saskadoc
Scotiadoc
Soodoc
Vandoc
Windoc

Captain	Chief Engineer
R. E. Chapman	P. W. Pratt
Geo. Stephens	L. Bazinet
H. Odesse	W. E. Lalonde
W. Boulst	L. Buttler
A. E. Kirton	J. J. Holler
H. Lesperance	D. Kalhoun
L. G. Burns	F. Audette
D. Stelp	J. R. Smith
R. A. Cameron	J. Kennedy
R. J. Wilson	A. Chalmers
W. J. Kirkwood	T. J. Dryburgh
T. Jewitt	L. Kruppa
I. Ovens	S. Pitfield

Lower Lake Vessels

Cartierdoc
Farradoc
Hamildoc
Kingdoc
Lavaldoc
Lawrendoc
Mondoc
Newbrundoc
Prescodoc
Soreldoc
Troisdoc

L. Legendre	H. Abercrombie
J. C. Marchand	H. Bonner
P. Pelletier	C. McCurdy
R. Legendre, O.B.E.	J. R. McLean
A. Sabine	H. Hardman
B. Grier	G. Long
G. F. Grant	R. Plunkett
M. Mongeau	F. Mailhot
F. Butters	H. Mackie
R. Sippell	A. Plant
C. Crompton	C. MacDougall

148 Pennsylvania-Ontario Transportation Co., 327 Rockefeller Bldg., Cleveland 13

(Owner and Operator)

J. L. Tinny, Manager

Ashtabula (car ferry) C. W. Nelson A. B. Dues

Petco Corp. (See Fleet No. 40)

149 Petoskey Transportation Co., Petoskey, Mich. (Owner and Operator)

H. H. Lucas, Vice President

J. B. John F. P. Russell Ervin Wendorff

150 Pickands Mather & Co., Union Commerce Bldg., Cleveland 14

George W. Callahan, Manager; H. C. Downer, Supt. of Vessel Property

The Interlake Steamship Company (Owner)

Adriatic	420-52-28	12	7,200	Howard J. Debo	Harvey C. Jess
Arcturus	514-54-31	24	9,550	John B. Maddigan	John H. Hubbard
Frank Armstrong	605-60-35	24	12,000	Guy L. Smith	Lawrence R. Goulette
Fayette Brown	504-54-30	12	9,350	Johan A. Larsen	Herman J. Jess
Harvey H. Brown	532-58-32	12	10,350	John W. Malloch	Samuel Olausen
Calumet	420-52-29	12	7,200	John C. Tilley	Harvey E. Mensen
J. A. Campbell	525-58-31	12	10,550	Nicolai M. Pederson	John W. Antons
E. A. S. Clarke	532-60-30	12	10,200	Roy F. Wuest	Arthur H. Jacobs
Harry Coulby	607-65-33	24	13,700	T. Howard Saunders	Thomas T. Miller
Crete	480-52-30	12	8,450	Raphael E. Marsden	Arthur A. Fetting
Harry W. Croft	504-58-30	24	9,900	Robt. W. Magnuson	Chester Bell
Henry G. Dalton	580-60-32	12	11,900	Berry Everson	Ralph M. P. Britz
Elba	420-52-28	12	7,200	Hart Brightstone	Gustav Engelhaupt
E. G. Grace	605-60-35	24	12,000	Alfred C. Drouillard	Robert H. Folkert
Hemlock	420-52-28	12	7,200	Clifton G. Endelmann Bernard L. Mitchell

Vessel			
Robert Hobson	580-60-32	24	11,900
Elton Hoyt II	530-56-32	12	10,000
Harry R. Jones	448-52-28	12	7,800
C. H. McCullough Jr.	512-56-31	12	10,200
Wm. McLaughlan	580-60-32	24	11,900
Samuel Mather	580-60-32	24	11,900
D. O. Mills	532-58-32	12	10,350
Jay C. Morse	532-58-31	12	10,350
Odanah	420-52-28	12
Pathfinder	530-60-32	12	10,500
Col. James Pickands	580-60-32	24	11,900
Frank Purnell	605-60-35	24	12,000
C. S. Robinson	525-55-31	12	9,850
Charles M. Schwab	580-60-32	24	11,900
Joseph Sellwood	525-55-31	12	9,850
John Sherwin	514-54-31	24	9,550
Amasa Stone	525-55-31	12	9,750
Verona	480-52-30	24	8,450
James C. Wallace	532-56-31	12	10,400
Augustus B. Wolvin	540-56-32	12	10,450
Youngstown	580-60-32	12	11,900

Captain	Chief Engineer
Victor J. Noel	William Fritz
George A. O'Boyle	Jake P. Schiller
Harold E. Kleve	Wesley B. Daniels
Robert B. Leach	Ashley J. Arnold
Erling G. Jackson	Leo G. Bammel
Andreas E. Olsen	William F. Jess
Nels B. Larsen	Arthur W. Buchler
Carl W. Basch	Harmon Bourlier
Arthur M. Gilbert	Perry E. Benson
Daniel S. Erickson	Lloyd E. Thompson
C. Earle Downs	Ralph D. Bammel
Byron G. Stewart	Aubrey C. Daniels
Alfred I. Hansen	Albert J. Zobl
Frank Van Dusen	John F. Johnson
Henry W. Reinhold	Joseph A. Tilley
Oliver L. Ziegman	George J. Artman
Otto H. Schwedler	Leslie S. Sangster
Irving L. Hallberg	Hugh P. McCarville
Ralph T. Fenton	Clarence A. DeLong
Robt. A. Endelman	Lee C. Nash
Emmett C. O'Connell	Carl A. Backman

Pioneer Steamship Co. (See Fleet No. 91)

151*	Pioneer Transportation Co. Ltd., 660 Richmond St., London, Ont.		
	W. G. Perry, Manager		
Supertest (m.v.)	Rene Brisebois	A. Mance	

152 Pittsburgh Steamship Co., Rockefeller Bldg., Cleveland 13

(Owner and Operator)

R. M. Crawford, Fleet Captain; T. A. Ives, Fleet Engineer

B. F. Affleck	580-60-32	24	12,000	A. J. Winkel	R. W. Armstrong
Sewell Avery	595-60-35	24	11,700	C. H. Johnson	J. R. Bowermaster
Geo. F. Baker	580-58-32	12	11,300	R. DePolder	A. L. Haller
E. J. Buffington	580-58-32	12	11,400	C. E. Gerlach	C. A. Britton
Robt. W. E. Bunsen	439-50-49'6"	24	7,100	W. W. Eberhart	Anthony Rehak
D. M. Clemson	580-60-32	12	12,200	A. G. Waurzyniak	M. O. Waldeland
Wm. G. Clyde	580-60-32	24	12,000	W. T. Simonds	F. G. Hazen
Thos. F. Cole	580-58-32	12	11,500	J. E. Diamond	Sven Stolson
W. E. Corey	549-56-31	24	10,300	R. M. Martin	D. C. Lawless
Cornell	454-50-28'6"	24	7,100	S. M. Mlnarik	C. W. Fitch
George G. Crawford	585-60-32	12	11,700	J. E. Tomlin	L. M. Morrison
Wm. B. Dickson	580-58-32	12	11,500	F. L. Palagyi	E. A. Bradley
Alva C. Dinke	580-58-32	12	11,300	E. C. Baganz	V. N. Ax
Wm. Edenborn	478-52-30	24	8,000	C. H. Mason	A. B. Weber
Isaac L. Ellwood	478-52-30	24	8,000	G. J. Schindler	E. C. Tanner
Benj. F. Fairless	614-67-35	24	14,500	Geo. Comins	C. D. Reno
James A. Farrell	580-58-32	12	11,700	L. J. Brissette	E. W. Lockhart
A. H. Ferbert	614-67-35	24	14,500	A. W. Dana	W. A. Churchill
Wm. J. Filbert	585-60-32	12	11,700	Frank Wilcox	M. H. Smith
Leon Fraser	614-68-35	24	14,500	R. C. Caughell	W. T. Welsh
H. C. Frick	549-56-31	24	10,500	M. J. Reader	C. J. Larcombe
E. H. Gary	549-56-31	24	10,500	R. A. Marzero	T. F. Harbottle
John W. Gates	478-52-30	24	8,000	S. A. Mack	C. K. Seelye

Vessel

Captain

Chief Engineer

A. F. Harvey	580-60-32	24	12,100
J. A. Hatfield	580-60-32	24	12,100
James J. Hill	478-52-30	24	8,000
Francis E. House	585-60-32	24	11,700
John Hulst	586-60-32'6"	24	12,000
W. A. Irvin	586-60-32'6"	24	11,900
Horace Johnson	580-60-32	24	11,900
D. G. Kerr	580-60-32	12	12,200
Thos. W. Lamont	580-60-32	24	12,000
R. V. Lindabury	580-60-32	24	12,100
Thomas Lynch	580-58-32	12	11,200
W. A. McGonagle	580-60-32	12	12,200
Malietoa	454-50-28'6"	24	7,400
Governor Miller	580-60-32'6"	24	11,900
J. P. Morgan	580-58-32	12	11,300
J. P. Morgan Jr.	580-58-32	12	11,300
Sam'l F. B. Morse	456-50-29	24	7,300
Wm. J. Olcott	580-58-32	12	11,500
Irving S. Olds	614-67-35	24	14,500
Wm. P. Palmer	580-58-32	12	11,800
E. W. Pargny	580-60-32	12	12,300
Geo. W. Perkins	549-56-31	24	10,400
Henry Phipps	580-58-32	12	11,200
Gen. Orlando M. Poe	470-50-29	24	7,500
Norman B. Ream	580-58-32	12	11,300
Perclval Roberts Jr.	580-58-32	12	11,700

J. M. Boyce	A. L. Rhodes
W. H. MacBeth	F. F. Hunger
R. F. Benjamin	Martin Olsen
A. M. Everett	R. W. Hogle
H. L. Buckley	W. F. Parker
C. C. Carlisle	L. B. David
A. C. Penzenhagen	A. A. Lyman
G. M. Sandiford	Harry Barteldt
Swen Fotland	J. F. Oakley
Thor Nelson	H. W. Bremer
R. F. Radike	A. E. McGuire
Michael Rushin	O. J. Berger
A. F. Braciszkeski	T. M. Hermansen
D. E. Manuel	B. H. Hesler
R. H. Olson	Geo. Parks
F. W. Quinn	R. A. Evans
G. J. Wilson	J. A. Robinson
C. J. Paver	G. E. Anderson
E. D. Purdy	F. J. Manion
Dan MacDermid	R. I. Dillenbeck
T. F. Burns	E. W. Anderson
J. O. Indergard	V. J. Osier
M. P. Hoshour	G. J. Olsen
M. H. Daggitt	H. A. Lehtoma
I. K. Henricksen	L. D. Bouille
C. M. Christensen	Jas. Amenson

106

H. H. Rogers	580-38-32	12	11,200
Wm. B. Schiller	580-58-32	12	11,500
George A. Sloan	595-60-35	24	11,700
Robert C. Stanley	595-60-35	24	11,700
Myron C. Taylor	580-60-32	24	12,000
Eugene P. Thomas	580-60-32	24	12,000
Richard Trimble	580-58-32	12	11,800
Enders M. Voorhees	614-67-34	24	14,500
R. H. Watson	586-60-32'6"	24	12,000
Peter A. B. Widener	580-58-32	12	11,200
H. D. Williams	580-60-32	12	12,200
August Ziesing	580-60-32	12	12,000

A. J. Mercier	S. M. Nelson
W. K. Kelly	E. F. Heckel
R. W. Parsons	Thos. Reinert
A. H. Nielsen	Robt. Conlen
D. T. Whitlock	J. B. Bellow
C. J. Brinker	A. K. Brake
G. A. Lehne	A. A. Baker
Ed Palm	W. B. Danforth
Wm. Ward	Harry Lickfeldt
S. T. Kemmerly	J. L. Komarek
W. H. Paver	M. C. Smith
F. H. Pratt	F. J. Cunningham

153 Porter Co., Ltd., The J. P., 936 Dominion Square Bldg., Montreal 2, Que. (Owner and Operator)

W. A. Kalls, Secretary-Treasurer

Alice (tug)
Aviso (tug)
Daisy (tug)
Gordon B. Livingstone (tug)
Gay Porter (tug)
Margaret Porter (tug)
Rouille (tug)
Delver (dredge)
Fundy (dredge)
J. A. Gregory (dredge)
New Brunswick No. 1 (dredge)
Shuniah (dredge)

R. Grandy	K. McLeod
F. Dingle	L. Meunier
not operating	
Gordon Livingstone	Preston Ross
F. R. Perry	T. Cox
R. Picard	J. A. MacDonald
D. D. Clayton	L. Sharkey
J. Gamble	J. Gamble Jr.
W. McIntyre	C. Fizzard
J. Fitzgerald	L. Hupman
M. Haughn	W. Landry
J. Buffitt	L. Lamoureux

107

<i>Vessel</i>	<i>Captain</i>	<i>Chief Engineer</i>
154 Powell Transports, Ltd., 563 Starbuck	Grain Exchange, Winnipeg, Can. Gerald E. Blevins	
155 Prescott & Ogdensburg Ferry Co., Ltd., Joseph Dubrule	Prescott, Ont. (Owner and Operator) P. Boivin R. Gendron R. W. Barkley	
Levis	Harold McDonald H. Phillips	
Presque Isle Transportation Co. (See Fleet No. 42)		
156 Pringle Barge Line Co., Barkhamstead (tug)	The, Buhl Bldg., Detroit A. J. Gaffney R. E. Haggerty S. D. Ferson Gerald Wood	
Jesse James (tug)	Wm. Bond Fred Zimmerman	
Constitution (barge)	A. J. Dingman Otto Donegon	
Maida (barge)		
Pure Oil Co. (See Fleet No. 80)		
157 Purvis, James & Son, E. D. M. Purvis (tug)	Gore Bay, Ont. (Owner and Operator) Albert McLeod	Ed. Julot
158 Pyke Towing & Salvage Co., Enarco (barge)	506 Princess St., Kingston, Ont. (Owner and Operator) Grant Pyke, Manager Capt. Averill	
Hilda (barge)	Capt. Johnson	
Salvage Prince (tug)	G. Pyke E. Reid	
Salvage Queen	Capt. Bates Thomas Campeau	
(No appointments for barges Sand Boy and Stone Boy)		
159 Quebec & Ontario Transportation Co. Ltd., Chicago Tribune (m.v.)	680 Sherbrooke St., West Montreal, Que. F. V. McIntyre M. MacLeod J. O. Beaudoin R. Peatman Geo. Ferguson Albert Stewart D. Gendron W. Garrett	
W. E. Collison, Manager; A. G. Sweeting, Superintendent Engineer		
Franqueling (m.v.)		
Heron Bay		
Manicouagan (nee Empire Rother)		
New York News	R. J. Brown G. Coffin	
Outarde	W. E. Redfearn W. Smith	
Shelter Bay	J. Tyson H. Smith	
160 Quebec Paper Sales & Transport Co. Ltd., Dompaco (m.v.)	44 St. Louis St., Quebec, Can. (Owner and Operator) G. Laliberte R. Caron A. Frenette E. Bouchard A. Hovington L. McColl A. Levesque E. Hovington R. Normandeau A. Harvey G. Caron H. Caron M. Boulianne C. Bernier	
Donnacona No. 2 (m.v.)		
Donnacona No. 3 (m.v.)		
Kermic (m.v.)		
Newscarrier (m.v.)		
Sault-on-Mouton (m.v.)		
Soutouriski		
161 Red Arrow Steamship Co., Red Arrow Steamship Co., W. W. Newcomet, Manager; Jos. S. Morrow ... 420-52 .. . 7,500	Sheboygan, Wis. (Operator) Wilmington, Del. (Owner) H. J. Rake, Fleet Engineer Malcolm Johns Clarence Roed	

<i>Vessel</i>	<i>Captain</i>	<i>Chief Engineer</i>
162	Reger & Werner Fish Co., Lorain, O.	
Denny (gas)	Orville La Course	
San-Mar (m.v., diesel)	George Floro	
Francis (gas)	Carl Kibbe	
Jerry (gas)	Arnold Waldorf	

163	Reiss, C., Coal Co., The, Sheboygan, Wis. (Owner and Operator)	
	W. W. Newcomet, Manager, H. J. Rake, Fleet Engineer	
Green Bay (tug)	William H. Armstrong	Adrian Paska
Reiss (tug)	Glen Bergerson	George Johnson
	Elwood King	Daniel Damas

164	Reiss Steamship Co., The, Sheboygan, Wis. (Operator)	
	Reiss Steamship Co., Wilmington, Del. (Owner)	
	W. W. Newcomet, Manager, H. J. Rake, Fleet Engineer	
A. M. Byers	504-54	10,000
Reiss Brothers	603-60	13,000
Clemens A. Reiss	430-50	7,500
J. L. Reiss	489-52	7,800
John P. Reiss	504-54	10,000
Otto M. Reiss	420-52	7,500
Peter Reiss	504-54	10,000
Richard J. Reiss	621-60	15,000
Wm. A. Reiss	618-62	14,000
	H. L. Radcliffe	Sylvester Palumbo
	M. A. Baizaire	James Nelson
	George Rapp	Earl Parworth
	Carroll Shaw	Morris Gabert
	John Hoff	John Nystrom
	Hans Bauer	John E. Schmitt
	D. C. Sullivan	Clarence Jackson
	R. O. Frankforther	Willard Meter
	Howard Leach	Sam Lorenz

165	Rockport Steamship Co., Sheboygan, Wis. (Operator)	
	Rockport Steamship Co., Wilmington Del. (Owner)	
	W. W. Newcomet, Manager, H. J. Rake, Fleet Engineer	
	(Both vessels are self-unloaders)	
John A. Kling	538-56-31 ..	9,500
Charles C. West	572-60-31 ..	13,000
	Albert Olsson	Axel Backman
	Wayne Pringle	Theo. Jessen

166	Roen Steamship Co., Sturgeon Bay, Wis. (Owner and Operator)	
John Roen (tug)		
John Roen III (tug)		
John Roen IV (tug)		
Hilda (barge)		
Lillian (barge)		
Maitland (barge)		
Resolute (barge)		
	Ole Jacobsen	Jas. Strickland
	K. Svendsahl	Wm. Bentgen
	Ludwig Froland	Ed. Valiquette
	Frank Erfourth	Henry Isaksen
	Ray Williamsen	Vincent Younk
	George Galvas	J. Maples

167	Russell Construction Co. Ltd., Harbour Administration Bldg., Toronto, Ont.	
	J. O. Roddick, President	
R. C. Co. Tug No. 1	Ray Hand	J. A. Smith
R. C. Co. Tug No. 4	J. Whiteside	J. Billings
R. C. Co. Tug No. 5	A. Lavigne	D. Perks
Marine Derrick No. 14	Albert Brooks	
Marine Derrick 17	F. Moffatt	
Marine Derrick 18	Fred O'Shea	

The Saginaw Dock & Terminal Co. (See Fleet No. 144)

<i>Vessel</i>	<i>Captain</i>	<i>Chief Engineer</i>
168 St. Lawrence River Power Co., The, Massena, N. Y. (Owner and Operator)		
E. G. Schoeffel, Superintendent		
William Hoopes (tug)	E. J. Cline	R. J. Wood
James W. Rickey (tug)	E. J. Cline	R. J. Wood

169 Sarnia Steamships Ltd. of Sarnia, Ont., West St., Port Colborne, Ont. (Operator)
 Robert Scott Misener, Gen. Mgr.; John O. McKellar, Fleet Supt. and Engr.
 Colonial Steamships Ltd. (Owner)

Baytown	416-50-28 ..	7,500	E. S. Bailey	K. E. DeMille
Viscount Bennett	480-52-30 ..	9,000	C. H. Cole	A. McLaren
Brampton			J. Halstead	J. M. Walker
Clayton			F. J. Brady	J. Paterson
Everetton			A. R. Rafuse	John Findlay
Laketon	416-50-28 ..	7,800	D. L. Wilson	R. M. Crawford
Mathewston	530-53-31 ..	12,000	J. E. Stewart	David Barclay
Queenston			R. O. Welland	C. K. Laburn
Royalton	530-53-31 ..	12,000	J. S. Walton	V. Parker

Sarnia Steamships Ltd. (Owner)

F. H. Brown	W. J. Lemcke	E. J. Springthorpe
J. P. Burke	T. O. Allison	J. McCleverty
J. A. France	J. A. Austin	Gordon Begg
C. H. Houston	W. A. Stewart	William Crowley
J. O. McKellar	J. W. Sharpe	A. Walker
J. N. McWatters	C. C. Harrison	J. McEwen

Milverton		C. DUNNETT		
Lt. J. Misener	C. Toupin	F. Daggett		
Ralph Misener	J. Bowie	W. Cook		
Scott Misener	G. B. Albinson	A. Lyons		
E. P. Murphy	A. G. McLean	E. Carpenter		
Sunchief	255-44-12'6 ..	3,200	L. E. Pain	B. Hardy
(nee Turret Cape)			C. E. Tully	A. E. Hurst
Frank Wilkinson				

**170 Schneider Transportation Co., 800 Marshall Bldg., Public Square
 Cleveland 13 (Owner and Operator)**
 A. E. R. Schneider, President

Cletus Schneider	360-50-28 24	5,900	Harold Todd	Edwin Peterson
Pam Schneider	360-50-28 24	5,900	M. J. Wagner	Ben Perew

**171* Schwartz Sand & Gravel Co., 3000 Lakeside, Cleveland 14
 (Owner and Operator)**

K. V. Schwartz	John A. Straney...	Russel G. Lessenthien
----------------------	--------------------	-----------------------

Shasta Steamship Co. Inc. (See Fleet No. 19)

172 Shell Canadian Tankers Ltd., 25 Adelaide St., East, Toronto 1, Ont.

Justine C. Allen (m.v.)	F. Brais	T. Bryndon
Peter G. Campbell (m.v.)	F. Young	H. Pace
Lakeshell (m.v.)	F. Foote	T. Carrie
John A. McDougald	S. G. Williamson	T. E. Hurley

Vessel

Captain

Chief Engineer

173 Shenango Furnace Co., 1961 Union Commerce Bldg., Cleveland 14 (Operator)
 Shenango Furnace Co., Pittsburgh (Owner)
 C. J. Peck, Manager; P. J. Riley, Superintendent
 Col. J. M. Schoonmaker 590-64-33 24 12,600 Ralph L. DoyleJohn Mansika
 Shenango585-58-32 24 11,400 Peter A. FischetteChas. J. Volk
 Wm. P. Snyder, Jr. 590-64-33 24 12,600 Linwood I. ShawAlbert Fritz

174 Shipping Limited, 31 St. James St. W., Montreal, Que. (Operator)
 J. P. Doyle, President; A. Barrett, Marine Superintendent
 Canadian Oil Co. Ltd., Montreal, Que. (Owner)
 John Irwin (tanker) J. A. MacIntyreH. E. Christensen

Sierra Transportation Co. (See Fleet No. 186)

175 Sincennes-McNaughton Line Ltd., 635 Common St., Montreal, Que. (Owner)
 Joseph Simard, President; R. A. Campbell, Managing Director
 James Battle No appointments
 Felicia D. CournoyerA. Duval
 Lotbiniere
 Yvon Dupre Jr. J. E. Blais P. Cournoyer
 Graeme Stewart Jos. Millette M. Descoteaux
 Brighton (barge)
 Cobourg (barge)
 Londonderry (barge)

International (derrick barge)
 Fire Chief (tug) R. Lemay D. Vezina
 Mathilda (tug) E. Houde J. Bernard
 John Pratt (tug) Z. Bibeau A. Cournoyer
 Pierre Racine (tug) Not in commission
 Rival (tug) L. Orr R. Houde

176 Socony-Vacuum Oil Co., 26 Broadway, New York, 4 (Owner and Operator)
Marine Transportation Dept.
 Traverse City Socony (m.v.) William Waddington, Jr. ...John Thom

177 Sorel Harbor Tugs Ltd., Sorel, Que. (Owner and Operator)
 No definite appointments made at beginning of season
 Tugs Chicoutimi, Marguerite T., Jaques T., Madelein T., Pauline T., Paul T., and 15 barges.

178 South Chicago Coal & Dock Co., 222 West Adams St., Chicago, (6)
 Koalkraft Arthur J. SpottonHarry Zivney

179 Standard Oil Co., Whiting, Ind. (Owner and Operator)
 W. J. McGill, Manager of Marine Dept.
 (All vessels are tankers)
 Beaumont Parks J. JohansenH. Carlson
 William P. Cowan J. TaylorW. W. Boynton
 Red Crown E. H. SellA. Lippie

<i>Vessel</i>	<i>Captain</i>	<i>Chief Engineer</i>
Edward G. Seubert	E. F. W. Justmann	M. Swanson
Robert W. Stewart	G. Carlson	A. Amolsen

180 Steinbrenner, George M., 706 Rockefeller Bldg., Cleveland 13 (Operator)
 No appointments at opening of season
 Kinsman Transit Co. (Owner)

E. C. Collins	420-50-28	24	6,700
Harry L. Findlay	532-56-31	12	10,200
Philip Minch	480-52-30	12	8,600
MacGilvray Shiras	420-50-28	24	6,700
Henry Steinbrenner	420-50-28	24	6,900

Sumatra Steamship Co. (See Fleet No. 186)

181 Swedish American Line, 600 Dorchester St. W., Montreal 2, Que.

Brush	
Erland	
Siljan	
Laholm	
Polykarp	

S. S. Texaco Brave Ltd. (See Fleet No. 122)

S. S. Texaco Chief Ltd. (See Fleet No. 122)

S. S. Texaco Warrior Ltd. (See Fleet No. 122)

182 Texas Co., The, Marine Dept., 135 E. 42nd St., New York
 (Owner and Operator)

Maine	R. E. Lee	H. E. McCracken
Michigan	J. F. Fitch	R. R. Weeks

183* Thousand Island Steamship Line, Kingston, Ont. (Owner and Operator)
 Ross W. Carnegie, Manager; H. C. McIlquham, Sec.-Treas.

Island Queen	Ross W. Carnegie...	George A. Woodman
--------------------	---------------------	-------------------

184 Thorp & Co., J. J., Duluth, Minn. (Operator)

Lee Joyce (tug)	Emil Gustafson
Constans (tug)

185 Tombs, Guy, Marine Service Ltd., 1111 Beaver Hall Hill, Montreal 1, Can.

Ethel Tombs	A. L. Mallette	Phyllis Céré
-------------------	----------------------	--------------

186 Tomlinson Fleet, The, 2900 Terminal Tower, Cleveland 13 (Operator)
 Warren C. Jones, President and General Manager

Consolidated Steamship Co. (Owner)

M. E. Farr	580-60-32	12	12,000	E. H. Cahours	J. H. Mafo
------------------	-----------	----	--------	---------------------	------------

Continental Steamship Co. (Owner)

Chas. E. Dunlap	580-60-32	12	12,000	C. U. Danielson	L. Gallagher
-----------------------	-----------	----	--------	-----------------------	--------------

<i>Vessel</i>			<i>Captain</i>	<i>Chief Engineer</i>
	Duluth Steamship Co. (Owner)			
Sylvania	504-54-30	12	9,400	E. B. WolvinM. F. Desmond

	Globe Steamship Corp. (Owner)			
Cuyler Adams	474-52-29	12	8,400	J. E. DruryT. U. Ranta
Ball Brothers	480-52-30	12	8,900	Alfred M. HansonJ. L. Murphy
James Davidson....	580-60-32	12	12,000	A. R. MorseArthur M. Olson

	Inter Ocean Steamship Co. (Owner)			
Jas. E. Davidson..	504-54-30	12	9,400	J. C. TaylorW. Karro

	Sierra Transportation Co. (Owner)			
Sierra	438-52-28			A. M. HendricksonH. E. Jewell
(self unloader)				

	Sumatra Steamship Co. (Owner)			
Sumatra	405-48-28			E. G. GallG. B. Amo
(self unloader)				

	Triton Steamship Co. (Owner)			
R. P. Ranney	420-52-28	12		E. AuspsetterH. W. Bryan

187 Toronto, City of, Ont. (Owner and Operator)
M. A. Stewart, Commissioner of Works

G. R. Geary (tug)	F. T. FoulkesJ. H. Shaughnessy
-------------------------	--------------------------------------

Ned Hanlan (tug)	D. T. MilneH. E. Baillie
(See also Fleet No. 188)	

188 Toronto Transportation Commission, 35 Yonge St., Toronto, Ont. (Operator)

City of Toronto (Owner), H. C. Patten, General Manager;

D. A. Peters, Marine Supt.

Aylmer (motor tug)	Officers not assigned to particular vessel
Biuebell	
Buttercup (motor launch)	
T. J. Clark	
William Inglis (m.v.)	
Sam McBride (m.v.)	
Miss Simcoe (motor launch)	
Trillium	
Miss York (motor launch)	
(See also Fleet No. 187)	

189 Transit Tankers & Terminals Ltd., 31 St. James St., West, Montreal 1, Que.

(Operator)

Bruce Hudson	Leo O'NeilGeorge Murphy
Joan Virginia	Thomas WilsonPatrick Neilon
Transbay	Octave NormandRomeo Marchand
Transinland	J. Arcade DaneauGeorge Beckett
Translake	Maurice LapointeJacques Marchand
Transriver	Olivier BibeauNoel Laplante
Transtream	Rodolphe TremblayCharles Gagne

<i>Vessel</i>	<i>Captain</i>	<i>Chief Engineer</i>
190	Trois-Rivieres, City of, City Engineers Office, Trois-Rivieres, Que.	
	Paul E. Dufresne, City Engineer	
Laviolette	C. Biron	P. Bouchard
Laverendrye	M. Lewis	H. Bouchard
Cite des Trois-Rivieres	A. Hamelin	W. Lamothe

Triton Steamship Co. (See Fleet No. 186)

191	U. S. Army, Corps of Engineers, (Dept. of the Army), 609 Federal Bldg., Detroit 31, Mich.	
	Col. Louis J. Rumaggi, District Engineer	
Brady (motor launch)	Morgan A. Wickman, Sr.	
Capt. A. Canfield (motor tender)	Theodore TenEyck, John H. VanderMeiden	
Dixon (motor launch)	Virgil A. Willett	
Owen M. Fredericks (harbor tug)	Lawrence W. Barrett, Erwin G. McCartney	
Capt. George (harbor tug)	Gustav J. W. Jacobson	Clarence Miller
Col. J. D. Graham	Conrad G. Haugen	Wm. F. Stepaniak
Haskell (motor tender)	Algot V. Herman	
MacDiarmid (survey boat)	Robert M. Johnson	
Maumee (motor launch)	Thomas G. Fairbairn	
Osprey (motor tender)	Orlaf F. Sullivan, Andrew A. Snider, Jr.	
Pioneer	Russell E. Ruh	
F. G. Ray (survey boat)	John J. Jurczszyn	
Sault Ste. Marie (motor launch)	Richard A. White	
Williams (tug)	John T. Burke	A. F. Sendenburgh
Wolcott	Harvey M. Hodge	Merle C. Gignous

192 U. S. Army, Corps of Engineers, (Dept of the Army), Engineer Park, Buffalo 7, N. Y.

Col. Herbert D. Vogel, District Engineer

Black Rock	No appointment	
Hoffman (dredge)	Harry J. Ruddy	Edward M. Reisman
McCauley (derrick boat)	Arthur Ceppi	
Nash (tug)	James P. Hassett	
Niagara (derrick boat)	No appointment	
Quintus (tug)	Austin Wilcock	Michael J. Mazur
Reinecke (survey boat)	George F. Myers	Anthony V. Mulligan
(nee Tyrer)		
Savannah (dredge)	William H. Bowman	James Simpson
Stanley (tug)		William A. Cummings
Taylor (dredge)	Angus McLennan	John Beckham
Tonawanda (derrick boat)	Roy Seebeck	

193 U. S. Army, Corps of Engineers, (Dept. of the Army), 428 Federal Bldg., Milwaukee

Col. John O. Colonna, District Engineer; Lynn S. Kreger, Operations Officer

Algoma (tender motor)	L. G. LaPlante	
Hains (dredge)	Lester C. Brinkert	Lewis A. Goodin
Holland (tender motor)		
Ludington (tug)	Harvey E. Conroy	Louis J. Hengartner
Manistee (tender motor)	Marvin Nelson	
Menominee (tender motor)	Joseph Kozak	

Vessel	Captain	Chief Engineer
Milwaukee (barge)	Albert R. Nielson	
Racine (tug)	Bernard Braley	
Two Rivers (tug)	Palmer E. LaPlante	Harold Van Bramer

United States Maritime Commission (See Fleet No. 42)

194 United Towing & Salvage Co. Ltd., 635 Common St., Montreal (Operator)

Bellechasse	No appointments	
Coteau (barge)	No appointments	
Jean Fraser (tug)	W. J. Taylor	W. F. Gehl
Great Western (derrick barge)		H. L. Newton
Guardian		
Ponoko	No appointments	
Strathmore (tug)	Angus MacDonald	J. Farquharson
James Whalen (tug)	V. McCabe	J. Gehl
Lachine	O. Leduc	Chas. Aitken

195 Upper Lakes & St. Lawrence Transportation Co. Ltd. Queen's Quay at Spadina Ave., Toronto, Ont.

Brown River (m.s.)	T. H. Thompson	S. E. Bonner
Brown Beaver	H. E. Weibanks	Jack Scott
Bryn (barge)	J. W. Lidstone	A. Gouin
Ralph Budd	L. E. Burden	M. T. Leatherdale
Norman P. Clement	J. A. Bisette	F. V. Camps
Edwin T. Douglass	No appointments	

William H. Daniels	No appointments	
James B. Eads	O. Gulbranson	J. Collingham
John Ericsson	H. B. Bazeley	A. Melhm
John Fritz (barge)	D. M. Kitchen	T. Nicholson
Glenbogie (barge)	N. H. Miller	W. Fox
Grey Beaver	A. H. Dixon	R. W. Young
Alexander Holley (barge)	J. H. Ferguson	R. Richardson
Douglass Houghton	J. E. Fox	R. Bell
Charles R. Huntley	R. Graham	L. L. Crawford
Judge Keneffck	H. G. Redfearn	R. Herbert
Norman B. Macpherson	C. C. Clattenburg	Leo Sampson
Maunaloa II	A. E. McGee	G. Miller
John S. Pillsbury	J. B. Stephens	H. Locke
John J. Rammacher	D. Crawford	Jack Rush
John B. Richards	I. Young	W. J. Young
John A. Roebbing (barge)	A. Rouse	D. Brass
Howard L. Shaw	F. Harpell	G. Trott
James Stewart	J. L. Mattice	J. R. Jones
Shirley G. Taylor	G. H. Davies	E. Boudreault
Victorious	W. J. Ferguson	H. Adams
Shelton Weed	W. E. Ogg	A. Nicholson
Barge 137	J. Lillie	F. Rose

196 The Valley Camp Coal Co., The, of Canada Ltd., Port Colborne, Ont. and 220 Bay St., Toronto, Ont. (Owner and Operator)

Valley Camp	252-43-26 ..	2,700	Bruce A. Nichols	A. J. Kinnear
-------------------	--------------	-------	------------------------	---------------

122

123

Vessel

Captain

Chief Engineer

197 **Vermillion Sand & Supply Co., The, Vermillion, O. (Owner and Operator)**
 Otto Full, Manager
 R. W. Hoist Geo. Blattner Geo. Lang

The Virginia Steamship Co. (See Fleet No. 85)

198 **Wabash Railroad Co., Detroit**
 J. S. Dent, Superintendent
 Detroit Terminal Division
 Detroit (car ferry) G. W. Wilson C. R. Johns
 Manitowoc (car ferry) J. J. Mahon A. Severin
 Windsor (car ferry) Enoch Cram H. A. Lowry

199 **Waterways Navigation Co., Ford Bldg., Detroit, Mich.**
 Ralph S. Caulkins 6,800 Walter W. Callam. Clinton T. Greenleaf

200 **Wells Construction Co., 1121 Schofield Bldg., Cleveland 15**
 (Owner and Operator)
 North Harbor (tug) John McIver L. J. Mertaugh
 Red Crown (tug) Harry Johnson H. J. Walker
 J. R. Sprankle (tug) Wm. Smith
 Stella B (tug) Eric Abrahamson
 Craftsman (derrick scow) Guido Pierpaoli Ano Hendrickson
 Norman Kelley (derrick scow) Tony Maki E. Kuehn
 Wawasee (derrick scow)
 Wellston (derrick scow)

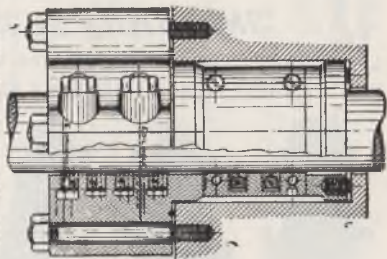
201 **West Shore Fuel Inc., 223 Erie St., Buffalo 2, N. Y.**
 (Owner and Operator)
 C. H. LaDuca, President; R. L. LaDuca, Vice President
 West Shore (lighter) W. Gross Blackstone R. Keefe

202 **White Bros., 2509 Glendale Ave., Toledo 9, O. (Owner & Operator)**
 Sandra 105-32-6 300 R. Harris Norman White

203 **Wilson Transit Co., The, 960 Rockefeller Bldg., Cleveland 13**
 (Owner and Operator)
 A. T. Wood, President
 Charles S. Hebard ... 504-54-30 24 9,500 Joseph McLean Henry Brocher
 Robert L. Ireland ... 504-54-30 12 9,600 George Skuggen Frank J. Hinman
 Edw. S. Kendrick ... 520-54-31 24 9,700 Arthur J. Mausolf ... Irving W. Harris
 A. T. Kinney 504-54-30 12 9,600 Roy F. Woodford ... Charles F. Schack
 E. J. Kulas 580-60-32 24 11,700 Murdock D. McQueen. Francis J. Heagerty
 James MacNaughton. 580-60-32 12 11,700 Bertram F. Davies ... Frank A. Carlson
 Chas. A. Paul 520-54-31 24 9,700 Arnold Pedersen Harold R. Morse
 Frank E. Taplin ... 420-52-28 12 7,100 Arnold O. Andersen ... David Campbell
 J. E. Upson 504-54-30 12 9,500 Peter J. Petersen Phillip Johnson
 Robert B. Wallace ... 525-55-31 12 9,900 Joseph E. Konkel Wm. J. Morrow
 Thomas Wilson 604-60-35 24 12,000 C. Henry Borgen William McKenzie

204* **Wisconsin & Michigan Steamship Co., 350 N. Plankinton Ave., Milwaukee**
 (Owner and Operator)
 Mark T. McKee, Vice President (Executive); Ray Van Beckum, Vice President
 Milwaukee Clipper A. K. Hoxie Carl Andersen

<i>Vessel</i>	<i>Captain</i>	<i>Chief Engineer</i>
205	Wolfe Island Corporation, Wolf Island, Ont.	
Wolfe Islander	S. Sisty	George A. Woodman
206	Wyandotte Transportation Co., 1609 Biddle Ave., Wyandotte, Mich.	
N. H. Morgan and R. M. Fisher, Charter Agents; James A. Lucier, Shore Engineer		
Alpena	356-47-27	5,500 Henry F. Kresin
Conneaut	415-56-30	8,000 John C. Broadwell
Huron	415-56-30	8,000 J. C. McCormick
Wyandotte	346-45-24	4,500 Harvey Booth
		James Crandall
207	Yankcanuck Transportation Co., Ltd., 42 James St., South, Hamilton, Ont.	
Capt. F. Manzutti, President		
Yankcanuck	F. Manzutti	C. Clark
208*	Zenith Dredge Co., Waterfront at 13th Ave., West, Duluth	
(Owner and Operator)		
D. C. MacDonald, President; J. V. Carlson, Superintendent		
Chattanooga (tug)	No appointments	
Columbia (tug)	No appointments	
Donald B. (tug)	No appointments	
John V. (tug)	No appointments	
Alice Vivian (dredge)	No appointments	
No. 27 (dredge)	No appointments	
Adele (derrick barge)	No appointments	
Faith	No appointments	
Powerful (derrick barge)	No appointments	



ANKORITE STYLE NO. 669

This is a hi-pressure marine split type packing with pressure breakers which cut down initial pressure on packing before it reaches the collapsible packing rings. The outer case is drilled and tapped for oil and drain connections. The lower pair of rings is designed to strip water from the rod to the drain provided. This combination adds years of service to the collapsible rings.

Ship cases to Elyria or Cleveland Office

All types of fibrous Pump Packings & Valves, Gasket sheets and Gauge Glasses, Valve Discs, Boiler Gaskets,

THE ANCHOR PACKING CO.

Rockefeller Bldg.,—Prospect 2748—Cleveland, Ohio

Metal Packing Division, Elyria, O.

Centrifugal
Pumps



SUPERIOR PUMPS FOR ALL SERVICES

ESTABLISHED 1863

DEAN BROTHERS PUMPS INC.
INDIANAPOLIS IND.

323 W TENTH ST.

Reciprocating
Pumps

Directory of Shipbuilding and Ship Repair Yards on the Great Lakes

The American Ship Building Company

Foot of West 54th Street, N.W.

Cleveland 2, Ohio

- W. H. Gerhauser, President
 R. B. Ackerman, Vice President and Treasurer
 E. B. Williams, Vice President in Charge of Engineering
 A. C. Hoffmeier, Secretary and Assistant Treasurer
 N. Halderman, Assistant Secretary and Auditor
 L. H. Feldmeyer, Manager of Sales
 J. L. Wallace, Assistant to President
 Kent C. Thornton, Naval Architect
 Paul Miedlich, Chief Engineer
 E. G. Turner, Consulting Engineer.
 W. R. Douglas, Chief Electrical Engineer
 Fred L. Obert, Manager of Order Dept.
 Frank J. Kunst, Purchasing Agent

LORAIN PLANT

Colorado Avenue

Lorain, Ohio

- John E. Steinman, Manager
 J. E. Thompson, Superintendent

BUILDING BERTHS: Four; two for ships up to 735 feet, and two for ships up to 550 feet.

STOP RUST

Rust is hard to control on steel between decks. Because of moisture, it keeps right on working, even under a coat of paint. What is needed is a chemical that neutralizes rust activity—a penetrating rust inhibitor—

TRUSCON

BAR-OX Formula "97"

Use Bar-Ox Formula "97" as an anti-rust treatment before painting. It penetrates the rust and minimizes its further activity. Then paint. Formula "97" thus makes possible a longer lasting steel paint job.

TRUSCON

RED LEAD COATING #687

The most advanced formulation for a Red Lead Coating that has the advantage of being quick drying. Is an excellent shop coating, and has practical application as a touch-up coating before application of field coat.

RB687 Red Lead Coating has excellent protective qualities against rust in areas of high humidity and condensation such as are common in breweries, packing houses and interiors of ships below grade.

Can be brushed or sprayed.

TRUSCON

LABORATORIES

Caniff & G. T. R. R.

Detroit 12, Mich.



REPAIR FACILITIES: Fully equipped, with dry docks, machine shop, boiler shop, sheet metal shop, pipe shop, joinery shop, electrical shop, heavy forging shop, etc., for making complete repairs to ships' hulls, engines, boilers and auxiliary machinery. Two 80-ton shear legs.

DRY DOCKS: No. 1—Length over all, 586' 0"; width of entrance at top, 66' 0"; depth over blocks, 14' 6". No. 2—Length over all, 736' 0"; width of entrance at top, 80' 0"; depth over blocks, 14' 6".

FLOATING REPAIR EQUIPMENT: One barge, equipped with air compressor, electric welding outfit, etc.; two delivery launches.

BUFFALO PLANT

191-301 Ganson Street
Buffalo 3, N. Y.

George F. Lynn, Manager

Martin L. Ingwersen, Superintendent

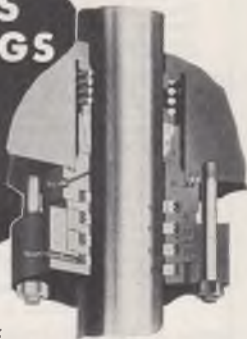
REPAIR FACILITIES: Fully equipped, with dry docks, machine shop, sheet metal shop, pipe shop, joinery shop, electrical shop, etc., for making complete repairs to ships' hulls, engines, boilers, and auxiliary machinery. 80-ton shear legs.

DRY DOCKS: No. 1—Length over all, 470' 0"; width of entrance at top, 61' 10"; depth over blocks, 13' 6". No. 2—Length over all, 630' 0"; width of entrance at top, 81' 2"; depth over blocks, 13' 10". No. 3—Length over all, 401' 0"; width of entrance at top, 53' 0"; depth over blocks, 14' 6".

FLOATING REPAIR EQUIPMENT: One self-propelled steam derrick scow with 10-ton lift, and one barge, both equipped with air compressors, electric welding outfits, etc.; two delivery launches.

COOK'S PACKINGS

for
Marine
Steam
Engines



There is an approved type of COOK'S Packing for all operating conditions, backed by over 50 years' experience. The solid case H.P. Packing is shown here. Split case Packings also are available for repair work so application may be made without disconnecting the rod. Ask for literature.

C. LEE COOK MFG. CO., Inc. — Louisville, Ky
Great Lakes Representative

TOM SORDS 800 Marshall Bldg.
CLEVELAND 13, OHIO



**COOK'S METALLIC
PACKINGS**

CHICAGO PLANT

101st Street and Calumet River
Chicago 17, Ill.

J. M. Dalzell, Manager
A. Dalrymple, Superintendent

REPAIR FACILITIES: Fully equipped, with dry docks, machine shop, joinery shop, electrical shop, etc., for making complete repairs to ships' hulls, engines, boilers and auxiliary machinery. 80-ton shear legs.

DRY DOCKS: No. 1—Length over all, 520' 0"; width of entrance at top, 71' 8"; depth over blocks, 15' 0". No. 2—Length over all, 727' 4"; width of entrance at top, 90' 2"; depth over blocks, 16' 0".

FLOATING REPAIR EQUIPMENT: Two repair launches and one repair scow, equipped with air compressors, electric welding outfits, etc.; one delivery launch.

TOLEDO PLANT

2245-2357 Front Street
Toledo 3, Ohio

Harry A. Stuart, Manager
A. N. Fountain, Superintendent

BUILDING BERTHS: Three; capacity for vessels up to 650' in length.

REPAIR FACILITIES: Fully equipped with dry docks, machine shop, boiler shop, sheet metal shop, pipe shops, joinery shop, electrical shop, etc., for making complete repairs to ships' hulls, engines, boilers and auxiliary machinery. 80-ton shear legs.

DRY DOCKS: No. 1—Length over all, 690' 0"; width of entrance at top, 96' 0"; depth over blocks, 14' 6". No. 2—Length over all, 560' 0"; width of entrance at top, 80' 0"; depth over blocks, 13' 0".

Quality VESSEL FUEL



24 HOUR SERVICE

SPECIFY YOUR BUNKER
FUEL FROM **VALCO**
CONSIGNMENT AT ALL
LOWER LAKE PORTS
and
PT. COLBORNE, ONT.

THE VALLEY CAMP COAL CO.

WESTERN RESERVE BLDG.

CLEVELAND 13, OHIO

FLOATING REPAIR EQUIPMENT: Launch and work scows equipped with air compressor, electric welding outfits, etc.

Canadian Shipbuilding & Engineering Ltd.

Kingston, Ontario, Plant

W. H. Coverdale, President
N. J. Reoch, Vice President
T. G. Bishop, Manager
D. Page, General Superintendent
Wm. Johnston, Chief Engineer
T. D. Macdonald, Accountant
W. H. Walton, General Manager, Collingwood, Ont., plant

REPAIR FACILITIES: Fully equipped for all kinds of repairs to steel or wooden vessels—engines, boilers and auxiliaries.

BUILDING BERTHS: Two.

DRY DOCK: No. 1—379' 6" by 55' 0" at entrance.

LIMITING CONDITIONS: 16' 0" draught.

Canadian Vickers, Limited

Maisonneuve, Montreal, Canada

J. Edouard Labelle, K. C., President
T. R. McLagan, Vice Pres. and Gen. Manager
J. W. Savidant, Comptroller and Treasurer
R. K. Thoman, Works Manager
A. M. Kerr, Gen. Supt. Marine Div.
G. Agar, Executive Engineer
James M. Packham, Assistant to the General Manager
R. C. Flitton, Sales Manager
R. Lowery, Naval Architect

HANNA COAL & ORE CORPORATION

*Lake Shipping & Fuel
Agents for*

Pittsburgh-Consolidation Coal Co.

AND

North Western-Hanna Fuel Co.

AND

Empire-Hanna Coal Co., Ltd.

We have the fastest and most convenient vessel fueling plants on the Great Lakes and tributary waters, located at Lime Island, Michigan, in the St. Mary's River; Windsor, Ontario, in the Detroit River; and Cardinal, Ontario, in the St. Lawrence River.

*Specializing in the best car dumper
Bunker Fuel obtainable furnished at all
Lake Erie and Ontario Loading Ports.*

1300 Leader Bldg. Cleveland 14, O.

REPAIR FACILITIES: Fully equipped to handle any vessel coming to Montreal.

BUILDING BERTHS: Five; Lengths 350' to 500'.

DRY DOCK: One floating dock, 600 feet long, operated in one or two sections.

The Collingwood Shipyards, Ltd.

Collingwood, Ont.

H. W. Walton, General Manager

R. W. Sutton, General Superintendent

F. E. Courtice, Chief Engineer

C. B. Hill, Purchasing Agent

REPAIR FACILITIES: Fully equipped for all kinds of repairs to steel or wooden vessels—engines, boilers and auxiliaries.

BUILDING BERTHS: Five.

DRY DOCKS: No. 1—518' by 56' 0", at entrance.
No. 2—412' by 95' 0" at entrance.

LIMITING CONDITIONS: 14' 0" draught.

Defoe Shipbuilding Co.

Bay City, Mich.

H. J. Defoe, President and General Manager

Wm. M. Defoe, Director of Personnel

W. E. Whitehouse, Asst. Manager

T. J. Defoe, Asst. Manager

Floyd A. Swanson, Production Manager

C. A. Fischer, Naval Architect.

Keneth Wonch, Purchasing Agent

Geo. Bock, General Superintendent

MARINE RAILWAY: 500 tons.

Serving Since 1887

Ensign

383

**CABLE
PRESERVER**

for WIRE ROPE

Insures internal Lubrication — Minimizes wear, *internal and external*. Prevents rust and corrosion.

"PENETRATES THRU THE CORE"

Ensign

384

**ROPE
PRESERVER**

for FIBRE ROPE

Prevents waterlogging, dry rot, mildew and fungus growth—Increases tensile strength.

Ensign

369

**CANVAS
PRESERVER**

For CANVAS and OTHER COTTON MATERIALS—369 Penetrates every fibre, increasing toughness and tensile strength. Prevents mildew. Prolongs life of TARPULINS, CANVAS HOSE, etc.

write for details to

ENSIGN PRODUCTS CO.

3528 E. 76th St. Cleveland 5, O



Great Lakes Engineering Works

River Rouge, Mich.

F. G. Morley, Chairman of Board
Charles Haskill, President and Treasurer
R. C. Lakin, Secretary
Dwight True, Senior Naval Architect
John B. Peterson, Naval Architect
H. M. Varian, Vice President and Chief Engineer
William Brush, General superintendent

Gavin Drummond—Cleveland District Manager

REPAIR FACILITIES: Complete for ship, engine and machinery repairs.

BUILDING BERTHS: Three; 800-foot ship.

DRY DOCKS: No. 1—Steel floating dock, 626' over all. No. 2—Steel floating dock, 162' over all.

ASHTABULA, OHIO, PLANT

Theo. J. Brush, Superintendent

REPAIR FACILITIES: Complete for ship, engine and machinery repairs.

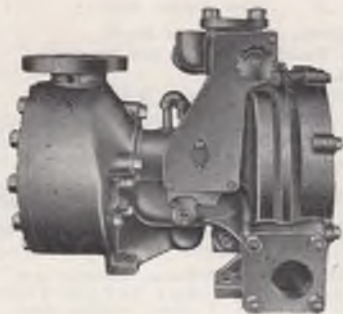
BUILDING BERTHS: One; 800-foot ship.

DRY DOCK: Concrete dock, 650' over all.

The Great Lakes Towing Co.

General Office
1800 Terminal Tower, Cleveland 13, Ohio
Yard
Foot Jefferson St., Cleveland, Ohio

L. C. Turner, President
R. E. McPherson, Treasurer
Ray Z. Damas, Fleet Captain
Robert C. Ryan, Fleet Engineer



COFFIN—*Steam Turbine* **CENTRIFUGAL PUMPS**

for Boiler Feed Service

SINGLE STAGE—HIGH PRESSURE

Saves Space, Weight & Steam

CAPACITIES—TO 500 G.P.M.

PRESSURES—TO 1100 LB. SQ. IN.

Write for Bulletin



THE J. S. COFFIN, JR., COMPANY
ENGLEWOOD, NEW JERSEY

REPAIR FACILITIES: Fully equipped for repairs to steel or wooden tugs and other small craft—hulls, engines, boilers and auxiliaries.

DRY DOCKS: Floating dry dock 80 feet long, with minimum clearance between the towers of 33 feet. Dockings limited to small craft not exceeding dimensions given herein and having a draft of not more than 12 feet of water.

Knudsen Bros. Shipbuilding & Dry Dock Co.

N. Third Street & Clough Avenue
Superior, Wisconsin

E. C. Knudsen, President

H. R. Knudsen, Vice President and Treasurer

O. Johnson, Secretary

Robert Fraser, Superintendent

REPAIR FACILITIES: Fully equipped, with dry docks, machine shop, joiner shop, electrical shop, etc., for making complete repairs to ships' hulls, engines, boilers, and auxiliary machinery.

DRY DOCKS: No. 1—Length over all, 609' 0"; width of entrance at top, 66' 0"; depth sill 13' 6".

No. 2—Length over all, 620' 0", width of entrance at top, 66' 6"; depth over sill 17' 6".

FLOATING REPAIR EQUIPMENT: Self-propelled derrick scow with 3 ton lift, scow with derrick—10 ton lift, fuel oil scow, and 7 repair boats equipped with air compressors, electric welding outfits, etc.

FUEL

MODERN BUNKER DOCK

Located conveniently on St. Clair River beside International Tunnel

Quality Coal Fast Fueling

24 HOUR SERVICE
ACCURATE WEIGHTS

Marine Agents
VACUUM OIL COMPANY

Complete Stock Available

Telephone Pt. Huron 21321
Radio via Pt. Edward

Port Huron Coal & Dock Company

PORT HURON, MICH.

Operated by
The Cleveland-Cliffs Iron Company
Cleveland, Ohio

Manitowoc Ship Building Co.

Manitowoc, Wis.

Charles C. West, President
W. L. Wallace, Vice President
A. L. Pitz, Vice Pres. & Supt. Marine Div.
J. E. Thiell, Vice President-Secretary
A. L. Nash, Treasurer
E. N. Fors, Asst. Secretary-Treasurer
H. A. Meyer, Purchasing Agent
J. D. West, Machinery & Mfg. Divs.
R. D. West, Equipment Works & Fabricating Div.

REPAIR FACILITIES: Full facilities for boiler machinery and hull repairs.

BUILDING BERTHS: Three: 600 feet.

DRY DOCKS: No. 1—Floating dock 850' x 70'.

GENERAL INFORMATION: Maintain complete facilities for all classes of ship repairs, also furnishing of stores and supplies.

A. B. McLean & Sons Ltd.

Brock Street Dock
Sault Ste. Marie, Ont.

Capt. R. A. McLean, President
John McLean, Vice President
Alexander B. McLean, Secretary-Treasurer

REPAIR FACILITIES: Machine shop. Air compressors. Electric and gasoline arc welding units for making complete repairs to hulls, engines; boilers and auxiliary machinery.

DRY DOCK: Floating dry dock. Length over all 112'. Width of entrance at top 49' 6". Depth over blocks 13'.

FUEL DOCK

at

Ecorse — Michigan

On Detroit River alongside
Great Lakes Shipyard

Automatic Weigh Scales

Conveyor Belt Delivery

Quality Coal—Fast Fueling

Capacity 600 tons per hour

**Nicholson Terminal &
Dock Company**

Telephone Vinewood 2-4305
Detroit

Midland Shipyards, Ltd.

Midland, Ontario

W. H. Coverdale, President
Capt. Norman J. Reoch, Vice President
Herbert J. Whitmell, Manager

REPAIR FACILITIES: Fully equipped for boiler or engine repairs.

BUILDING BERTHS: One at 650' or two at 265'.

Port Arthur Shipbuilding Co., Ltd.

Port Arthur, Ont., Can.

John W. Wolvin, President
Capt. Norman J. Reoch, Vice President
G. F. McDougall, Manager and Secretary-Treasurer
L. E. Tornroos, Naval Architect and Chief Engineer

REPAIR FACILITIES: Complete facilities for repairs to hulls, engines, boilers and auxiliaries.

BUILDING BERTHS: Two 650' long.

DRY DOCK: One 700' long, 98' wide. Water over-sill at normal lake level 16'.

Sturgeon Bay Shipbuilding & Dry Dock Co.

Sturgeon Bay, Wis.

Capt. John Roen, President
William J. Wolter, Secretary and General Manager
Lloyd Spude, Superintendent
D. R. DeLay, Naval Architect and Chief Engineer
Floyd B. Knuth, Comptroller

BUILDING BERTHS: Six

DRY DOCKS: No. 1—100.

No. 2—70.

No. 3—200.

MARINE RAILWAY: 100 feet.

In Sandusky, Ohio

ASSOCIATED SUPPLIERS, Inc.

Formerly

RINKLEFF HARDWARE CO.

—Distributors for—

Standard Oil Co.—Sohio Marine Lubricants

Fiske Bros.—Lubriplate

"Nalco Boiler Compound"

"Red Star Boiler Compound"

"Walters Oxi Crystals"

Bethlehem Steel Co.—Wire Rope & Fittings

Complete Line of Ships Supplies

Including Pipe—Valves & Fittings

24 Hour Service 7 Days a Week

121 Water St. Sandusky, Ohio

Phone 18

Phone 5012

F. R. Digby, Marine Dept. Mgr.

Phone Nights: 3629

Port Directory and Where-to-Buy

ASHTABULA, O.

Marine Newsstand—CHRISTENSEN'S 1010 West 5th St. Papers, Magazines, Smokers' Supplies, Confectionery, Sodas and Sundaes, Kodak Films.

Marine Supplies—MILLER-ANDERSON CO., 1003 West 5th St. Night and day launch service. Phones: 46-896, 46-457.

Meats—RENNICK, TOM J., 1104 West 5th St. High grade Meats and Poultry. Day and night delivery service to Marine trade. Phone: Dial 45-491. Residence: Dial 45-651.

Sheet Metal Work—THE CARLSON SHEET METAL CO., 404 East 5th St. Marine Work given special attention. Breaching, Smoke Stacks. Originators of "Carlson Sectional Boiler Covering." Phones: Day 46-386, Night 45-181.

Soot, Firescale & Slag Eliminator—COOK'S MARINE, 987 W. 5th Street, "Oxi Crystals" eliminate soot, firescale, slag while boilers operate normally. Reduces smoke while in port.

BUFFALO, N. Y.

Attorneys at Law—RICHARDS & COFFEY, Attorneys at Law, 1317 Chamber of Commerce. Telephone: Washington 5961.

Boilers—NICHOLSON & HALL BOILER & WELDING CORP. Office: 174 Ohio St. Boilers, Tanks and Stacks Repaired. Marine work a specialty. Phone: Washington 3500. Nights & Sundays: TAYlor 1220; AMherst 0526.

YOU CAN BE **SURE**.. IF IT'S **Westinghouse**

MU-1 Radar



**Built SPECIFICALLY to meet
Lake Carriers' specifications**

For full details, call your Westinghouse representative. Or write Westinghouse Electric Corporation, P. O. Box 868, Pittsburgh 30, Pennsylvania. J-02196



Westinghouse
RADAR

BUFFALO, N. Y. (Continued)

Boilers—OLDMAN BOILER WORKS, INC.—32-42 Illinois St. Marine work a specialty. Electric welding. Boiler Repairing, day or night. Phone: CLevland 0932; Night Phones: GRant 9100, TRiangle 3327—TRiangle 2904.

Boilers—TASHENBERG BROS. BOILER WORKS, 43-47 Illinois St. Office phone: Cleveland 1307. Marine work our specialty. Electric Welding and Air Plant. Day and night service.

Galley Repairs—FARRELL & CURRY, 70 S. Park Ave., marine ranges, galley sinks. Water tanks, stainless steel work tables, ventilator cowls, etc. Phone: CLevland 2506.

Groceries—GUNN, P. J., 54-60 Michigan Ave., Corner So. Park Ave. Groceries and Marine Supplies. Phone: WASHINGTON 1189. Night Phone: TRiangle 0779.

Marine Supplies—FRONTIER MARINE SUPPLY Co., 223 Erie St. Mates, engineers and stewards supplies. Phone CL 4027, Night: AM 0190—PA 5789.

Meats—GEHM, JOHN, 27 Elk Market Terminal. Dealer in choice meats of all kinds. Phone: CL 1204.

Pumps—LAKE ERIE MFG. CO., 192-198 Chicago St., Chemical Feed Water Treatments, Pump Valve and Plunger Packing, Solvents and Cleaners. Repairs. Phone: CLevland 1366.

Radio Station — RADIOMARINE CORP. OF AMERICA (Radio Station WBL), Shawnee Road, North Tonawanda, N. Y. Phone: TONawanda 762. Telephone or Telegraph communication to vessels. Radar, radio, direction finder sales, maintenance service.

Ranges (Galley)—RUSSELL & WATSON Div. of Ruslander & Sons, Inc., 94-96 Pearl St. Phone: WASH. 0585.

Repairs—FORD BROS., INC., 23-29 Illinois St. General Machinists, Cylinders and Valves bored in position: Ice Machine Repairing; Calibrating Gauges. Phone: CLevland 4677. Night Phones: Parkside 7443, Amherst 6960.

**THE
ONTARIO HUGHES OWENS COMPANY
LIMITED**



SALES AND SERVICE

**Hughes Recording Echo Sounders
Bludworth Depth Sounders
Direction Finders
Sperry Gyro Compasses
Electro Mechanical Steerers
Sperry Marine Radar
Radio Telephones**



COMPASS ADJUSTORS



**CHARTS AND NAUTICAL
PUBLICATIONS**

**146 West St.
Port Colborne
Phone 3673**

**401 McGill St.
Montreal
Phone Ha. 1243**

BUFFALO, N. Y. (Continued)

Repairs—MOLLENBERG-BETZ MACHINE CO., INC., 2026 Henry St. General Repairs of Engines, Pumps and Refrigerating Machinery. Ammonia fittings carried in stock. Cylinders and valves bored in position. Phones: CLEVELAND 7138 and 7139.

Repairs—REYNOLDS SHIP REPAIR, INC. 39-41 Illinois St. General Ship Repairing. Day and Night Service. Phone CL 9910. Night: HAMBURG 833.

Shipbuilders—AMERICAN SHIP BUILDING CO., THE. Buffalo Plant: 191-301 Ganson St. Telephone: CLEVELAND 4055. Hull, engine and boiler repairs; dry-docking; launch service.

Soot, Firescale & Slag Eliminator—CONNELLY BROS., 159 Ohio Street. "Oxi Crystals" eliminate soot, firescale, slag while boilers operate normally. Reduces smoke while in port.

Soot, Firescale & Slag Eliminator—FRONTIER MARINE SUPPLY CO., 182 Ohio Street. "Oxi Crystals" eliminate soot, firescale, slag while boilers operate normally. Reduces smoke while in port.

Tarpaulins—EDWARD MAGNER & SONS, 206-08 Main St. Tarpaulins, new tarps and repairs made in one day, boat covers, awnings, hardware and boat supplies.

CHICAGO, ILL.

Boiler Water Treatment — NATIONAL ALUMINATE CORP., 6232 W. 66th Place. Scientific Treatment of Boiler Feedwater.

Boiler Treatment—DEARBORN CHEMICAL CO., 310 S. Michigan Ave. Rust Preventive, Scientific water treatment.

Lubricants—THE TEXAS CO., 332 So. Michigan Ave., Chicago, Ill. Phone HARRISON 1920.

Radio—RADIOMARINE CORP. OF AMERICA, Sales and Service. 2253 Builders Bldg., Sales & Service Phone: Central 6-9387. Night Phone: WELLINGTON 5-9802.

Feather Weight
POWER-PAK PUMP



Here is a light weight, easy to handle, portable bilge pump that requires no priming. Two models: Eight foot, 12,000 gals.; eleven foot, 7,500 gals. Powered by Power-Pak, 2 H.P. air cooled motor with automatic governor. Simple design. Quality materials insure long life. Write for descriptive literature.

PROPULSION ENGINE CORP.

7th & White Eagle Rd. Kansas City 15, Kans.

CHICAGO, ILL. (Continued)

- Repairs**—BRADING, G. E., 3221 East 92nd St. Marine Boiler repairing and welding. Phones: South Chicago 8-0960. Night and Sundays: South Chicago 8-0318.
- Repairs**—NORTH BRANCH SHIPYARD INC., 1388 No. Branch St. All types of repair work, iron, carpenter, electrical, boiler, machine, dock. Electric and acetylene welding and cutting. Boat Storage. Day Phones: Michigan 2-4029. Residence Phones: Albany 2-4099, Columbus 1-8265, Kildare 5-6551.
- Pressure Regulators**—O. C. KECKLEY COMPANY, 400 West Madison Street, Chicago. Steam traps, float valves, strainers, water gauge specialties.
- Rubber Goods**—QUAKER RUBBER CORP., 2035 S. Michigan Ave. Also P. P. P. Rod Packing, Ebonite Sheet Packing, Ebonite Stop Valve Packing and Pump Valves. Hose and Belting for all purposes. Phone: Victory 2-0616.
- Shipbuilders**—AMERICAN SHIP BUILDING CO., THE, Chicago Plant: 101st and Calumet River, Telephone: REgent 4-2000. Hull, engine and boiler repairs; drydocking; launch service.
- Soot, Firescale & Slag Eliminator**—CALUMET MARKET, 10755 Hoxie Ave. "Oxi-Crystals" eliminate soot, firescale, slag while boilers operate normally. Reduces smoke while in port.
- CLEVELAND, O.**
- Architects (Marine)** — SMITH BROTHERS, 956 Rockefeller Bldg., Marine Architects, Surveyors and Appraisers.
- Bank**—CENTRAL NATIONAL BANK, Prospect Ave. & West 2nd St.
- Bank**—SOCIETY FOR SAVINGS, Public Square.
- Chain**—BALDT ANCHOR CHAIN—FORGE DIV. THE BOSTON METALS CO., Chester, Pa. Anchors and Chains new, used and reconditioned. Cleveland Phone: PR 6337.

THE CARLSON SHEET METAL COMPANY

Marine work given special attention
Breachings Smoke Stacks

Electric Welded Stainless
Steel Sinks

Originators of "Carlson
Sectional Boiler Covering"

404 E. 5th Street Astabula, O.

Established 1907

Day Phone 46-386 Night Phone 45-181

**THE Fries
and Schuele
COMPANY**

Foremost Outfitters on the Great Lakes

*Bedding, Floor Covering, Linens
and Galley Supplies
Wholesale Prices*

West 25th St. Cleveland
PProspect 1100

CLEVELAND, O. (Continued)

Chains — NATIONAL MALLEABLE & STEEL CASTINGS CO., 10600 Quincy Ave., Cleveland, O.

Cleaners — SERENE KLEANER CO., P.O. Box 2902, Cleveland 16, Ohio. "Serene" Kleaner removes oil, grease, dirt from clothes, painted surfaces, boiler and engine room floors and decks. Phone: WE 1765.

Compasses-Radar—W. L. "JACK" WEYLS, 2081 Carabel Ave., Lakewood 7, OHIO. Compass Adjustment & Service. Gyro and Radio installed. Phone: AC 2077.

Coal—HANNA COAL & ORE CORP., Agents for Pittsburgh Consolidated Coal Co., 1300 Leader Bldg. Best steamboat coal, 24 hours service at all Lake Erie Ports. Fuel lighter at Cleveland. Phone: CHerry 2400.

Dry Goods—FRIES & SCHUELE, West 25th St. Bedding, Linens, Curtains, Floor Coverings, and Galley Supplies. Phone: PProspect 1100.

Engine Room Supplies—THOMAS V. SORDS, 800 Marshall Bldg. Packing, Piston Rings, Pressure Gauges. Thermometers, Water Gauges, Boiler Accessories, Pump Valves, Mechanical Seals, Valve Repairs. Phone: CHerry 7330.

Furniture (Steamboat) — LEOPOLD BROTHERS FURNITURE CO., 15149 Lorain Ave. Clearwater 2400.

Gauges—CLEVELAND STEAM GAUGE CO., 2401 West Superior Ave. Gauge mfrs. We repair gauges and valves of every description. Phone: MAin 3539. Night Phone: RANDolph 1256.

Hatch Fasteners—MULHOLLAND HATCH FASTENER CO., THE, 1276 West 3rd St., Manufacturer of Simplex Security Mulholland Fasteners.

Lubricants—STANDARD OIL COMPANY OF OHIO, THE, Midland Bldg., "SOHIO" Marine Lubricants.

THE CLEVELAND STEAM GAUGE COMPANY

2401 West Superior St., Cleveland, O.

WE MANUFACTURE:

Ruf Hydraulic Whistle Blower, Swing Joints, Brass & Iron Grease Cups, Light Fixtures, and all types of Gauges.

WE REPAIR:

Safety Valves, Injectors & Lubricators. Va'ves set and tested by steam. Also Pumps, Engines, Gauges and machines of all kinds.

AGENTS FOR:

Crosby Safety Valves.

Day Phone: MAin 3539

Night Phone: RAndolph 1256

LEOPOLD BROTHERS

Furniture Company

Furniture—Carpets

Linoleums—Mattresses—Springs

Prompt Delivery Service

15149 Lorain Ave., Cleveland, O.

Telephone: CLeArwater 2400

CLEVELAND, O. (Continued)

Lubricants—THE TEXAS CO., 2501 West 3rd St., Cleveland 13, Ohio. Phone MA 5255.

Marine Equipment—MORRISON, FRANK & SON CO., 1330 W. Eleventh St. Life boats and rafts, binnacles, compasses, signal lights, wing ship ventilators, malleable galley ranges. Phone: MAin 4435.

Packing—ANCHOR PACKING CO., THE 527 Rockefeller Bldg. Phone: PRospect 2748.

Packing—GARLOCK PACKING CO., THE, Marion Building, Phone: MAin 0310.

Packings—HARPER PACKING CO. INC., 314 Patterson St., Chester, Pa. Metal Packings. Cleveland Phone: WO 6717.

Paints—AMERICAN OIL & PAINT CO., 9915 Harvard Ave. The use of Americote by many Great Lakes boat companies has proven it to be the most economical hull coating sold.

Paints (Marine) — FERBERT-SCHORNDORFER CO., 12815 Elmwood Ave.

Paints—THE SHERWIN-WILLIAMS CO., Midland Bldg. Phone: MAin 4200.

Polishing Cream—NORTH AMERICAN POLISH CORP., 9517 Cumberland Ave. Silver Polish for Steward's Quarters, Brass Polish for Mates and Engineers. For sale by all ship chandlers. Phone: CEDar 2843.

Provisions—HAUSHEER & SONS CO., THE, 1220-1228 W. 11th St. Meats, groceries, vegetables, fruits, ship supplies and Laundry. Phone: MAin 1580. MAin 1581.

Radar-Radio—RADIOMARINE CORP. OF AMERICA, 512 Auditorium Bldg., Sales, Maintenance, Service. Phone: PRospect 4441-8051. Night Phone: ACADEmy 4731, WOODbine 5171.

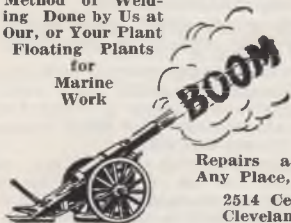
Rope Preserver—ENSIGN PRODUCTS CO., 3528 E. 76th St. 383 Cable Preserver, penetrates and rustproofs wire rope, 384 Rope Preserver waterproofs and strengthens fibre rope, 369 Canvas Preserver waterproofs and toughens

W. B. Boom, Pres. & General Mgr.
**THE BOOM BOILER
 & WELDING CO.**

Phone: MAin 8784
 Every Known
 Method of Weld-
 ing Done by Us at
 Our, or Your Plant
 Floating Plants
 for
 Marine
 Work

Nights: BO 7547

Fully
 Equipped
 Machine
 Shop



Repairs a Specialty
 Any Place, Any Time

2514 Center St.
 Cleveland 13, O.

MILLER - ANDERSON CO.

1003 W. 5th St. Ashtabula Harbor, Ohio

Groceries—Marine Supplies
 NIGHT AND DAY LAUNCH SERVICE

Phone 46-896—46-457

CHRISTENSEN'S MARINE NEWSSTAND

Soda Bar, Magazines, Confectionery, News
 Smokers Needs and Sundries
 Public Long Distance Telephone

(Denny Plagakis—Successor to Wm. Christensen)
 1010 West 5th St., Ashtabula Harbor, O.

"Serving the Marine Trade for Over 50 Years."

CLEVELAND, O. (Continued)

cotton materials. Industrial Maintenance
 Products—Heavy Lubricants.

Rubber Goods—QUAKER RUBBER CORP., 2215
 E. 14th St. Also P. R. P. Rod Packing, Eb-
 onite Sheet Packing, Ebonite Stop Valve Pack-
 ing and Pump Valves. Hose and Belting for
 all purposes. Phone: TOWER 1-2171.

Scale Remover—DOWELL INCORPORATED, 2314
 Terminal Tower.

Ship Repairs—RUD MACHINE CO., THE, 1078
 W. 11th St. Hull, Boiler and Machine Work.
 Phone: CHerry 3883-3884.

Shipbuilders—AMERICAN SHIP BUILDING CO.,
 THE. Main Office: Foot of West 54th St.,
 N. W. Telephone: WODbine 2250.

Soot, Firescale & Slag Eliminator — J and A
 THOMSON CO., 1146 West 11th St. "Oxi
 Crystals" eliminate soot, fire-scale, slag while
 boilers operate normally and reduces smoke
 while in port.

Soot, Firescale & Slag Eliminator—UPSON WAL-
 TON, 1310 W. 11th Street. "Oxi Crystals"
 eliminate soot, firescale, slag while boilers op-
 erate normally. Reduces smoke while in port.

Supplies—PATTISON, W. M., SUPPLY CO., THE,
 777 Rockwell Ave. Mooring Lines, Valves,
 Marine Scaling Hammers, Drills, Grinders,
 Boat Falls, Signal Halyards and Ratlines.
 Telephone: MAIn 7320.

Supplies—THOMSON, J. & A., Co., New location
 1146 W. 11th St. Cor. Main Ave. Marine
 Supplies. Phone: MAIn 0077. If no answer,
 call LAKewood 3096.

Supplies—UPSON-WALTON CO., THE, 1310 W.
 11th St. Mfrs. of wire rope, tackle blocks,
 rope fittings. Ship chandlery, tarpaulins, rig-
 ging products. Phone: MAIn 7444.

Vessel Fuel—VALLEY CAMP COAL CO., THE,
 Western Reserve Bldg., Valco Consignment.
 Bunker Fuel at all lower Lake Ports and Port
 Colborne, Ont.

W. L. "Jack" WEYLS

Compass Adjuster

Gyro Compass Service

Gyro and Radar Installed

2081 CARABEL AVE.

Lakewood 7, Cleveland, Ohio

ACademy 2077

Headquarters for tarpaulins, boat covers, awning and cotton duck.

Re-weavers of burns, tears, cuts, moth holes in wearing apparel. $\frac{1}{8}$ hole 3.00, $\frac{1}{4}$ hole 6.00, $\frac{1}{2}$ hole 12.00 in sharkskin, gabardine, covert cloth, herringbone.

Write for prices on other wool goods or larger cuts or holes.

EDW. MAGNER & SONS
Buffalo, N. Y. Cl. 7527

LAKE ERIE MANUFACTURING CO., Inc.

Manufacturers of

Red Star Chemical Feed Water Treatments

Ideal Pump Valves & Plunger Packing

Lemco Solvent—Scientific Cleaner

General Pump Repairing

WE MAKE PUMP VALVE SEATS

192-198 Chicago St. Buffalo, N. Y.
Phone: CLeveland 1366

CLEVELAND, O. (Continued)

Water Gages—RELiance GAUGE COLUMN CO.,
5902 Carnegie Ave. Boiler Safety Devices.

Welding—BOOM BOILER & WELDING CO., THE,
2514 Center St. Fully equipped Machine Shop.
Repairs a Specialty.

DETROIT, MICH.

Marine Photographer — CLAUDE LOCKWOOD,
19952 Rosemont Road. Stock or custom
photos—boats, docks, marine activities. Phone
KENwood 1-3480.

Rust Preventive — TRUSCON LABORATORIES,
INC., Caniff & G.T.R.R., Bar-Ox Formula
"97," anti-rust treatment before painting.
Saf-T-Dek for safe footings on decks, cat-
walks, passageways, docks and stairways.

Soot, Firescale and Slag Eliminator — DETROIT
MARINE SUPPLY CO., 7114 W. Jefferson
Ave., Detroit, Mich. "Oxi Crystals" eliminate
soot, firescale, slag while boilers operate nor-
mally. Reduces smoke while in port.

Temperature Instruments—TRERICE, H. O., CO.,
1420 W. Lafayette Blvd. Tel.: CHerry 9660.

DULUTH, MINN.

Men's Wear—COLUMBIA CLOTHING CO., 303
W. Superior St., Society Brand clothes, Walk-
Over shoes, Van Heusen shirts. For after
hour appointment call ME 3339.

Radio and Repairs—MASTER RADIO, 30 West
First St. Radio Sales and Service, Tubes,
Batteries.

Refrigeration Repair—NORTHERN REFRIGERA-
TION SERVICE, 27 E. Michigan St., Duluth
2, Minn. or 2215 E. 5th St., Superior, Wis.
replacements. See Page 22 for Great Lakes

ECORSE-DETROIT, MICH.

Fuel—NICHOLSON TERMINAL & DOCK CO.,
Quality Coal—Fast Fueling. Phone: VINewood
2-4300.

SOUTH CHICAGO COAL AND DOCK CO.

Bunker Fuel

24 Hour Lighter Service

General Offices: 7917 S. Exchange Ave.

Saginaw 1-4000

Dock: Calumet River at 95th St.

Saginaw 1-4000

REYNOLDS Ship Repair, Inc.

General Ship Repairing Day & Night Service

39-41 Illinois St.
Buffalo 3, N. Y.
Phone: CL. 9910

Nights
Phone:
Hamburg 833

Cleveland 7138
MOLLENBERG-BETZ MACHINE CO., Inc.
GENERAL MACHINISTS & REFRIGERATION
ENGINEERS

General Repairs of Engines, Pumps and
Refrigerating Machinery. Cylinders and
valves bored in position. Ammonia and
Fittings carried in stock. Distributors for
FRICK CO. Refrigerating Machines.

20-26 Henry St.

Buffalo, N. Y.

ELGIN, ILL.

Deconcentrators and Boiler Treatment — ELGIN
SOFTENER CORP. Mud, sludge and scale
forming impurities removed from boilers by
Deconcentrators. Chemical treatment to pre-
vent scale, corrosion and embrittlement.

ELYRIA, OHIO

Tools—RIDGE TOOL CO., THE.

ENGLEWOOD, N. J.

Centrifugal Pumps—COFFIN, THE J. S., JR. CO.
Steam turbine centrifugal pumps for boiler
feed service. Write for bulletin.

ERIE, PA.

Soot, Firescale & Slag Eliminator—BREBNER &
SON, 425 State Street. "Oxi Crystals" elimi-
nate soot, firescale, slag while boilers operate
normally. Reduces smoke while in port.

Supplies — MEISER, CARL H., 818 Peach St.
Marine Meats and Groceries. Day and Night
Launch Delivery. Phones: 23-637 and 23-638.
Residence Night Calls: C 66-148, 65-110.

ESCANABA, MICH.

Provisions—STEPHENSON, N. T. City & Marine
Store, 301 Ludington Street. Groceries, Meats,
Vegetables, Ice & Laundry. Day Phone: 1054.
Night Phone: 2328. Launch Delivery.

FORT WILLIAM, ONT., CANADA

Repairs—NORTHERN ENGINEERING & SUP-
PLY CO. LTD., North St. Full line of En-
gineering and Marine Supplies.

PENETROL

Reg. U. S. Pat. Off.

STOPS RUST THE FLOOD COMPANY

Hudson, Ohio

AMERCOTE

In almost universal and constantly repeating use Amercote has proven its excellence and economy, as a rust preventing coating particularly adaptable for hulls of steel boats.

THE AMERICAN OIL AND PAINT COMPANY
9915 Harvard Ave., Cleveland, Ohio

THE RUD MACHINE CO.

1078 W. 11th St.
CLEVELAND 13, OHIO

All Hull repairs above water line
Boiler and machine work.
Welding boat.

Telephone: CHerry 3883-3884

HOUGHTON, MICH.

Marine Market—A. NOZERO & SONS, Groceries, meats, fruit, vegetables. Phone 636 or 6031. Day or night.

Marine Service—SLATTERY'S 812 Shelden Ave. Groceries, meats, vegetables fruit, fowl, fish, (fresh and frozen), dairy products, beer, wine, paints, to all portage and torch lake docks. Day and Night Phone: 91-1850J.

HOUSTON, TEXAS

Rubber Goods—QUAKER RUBBER CORP., 2315 Polk Ave. Also P. P. P. Rod Packing, Ebonite Sheet Packing, Ebonite Stop Valve Packing and Pump Valves. Hose and Belting for all purposes. Phone: CHarter 4-4705.

HUDSON, OHIO

Penetrol—THE FLOOD CO., Hudson, Ohio. Manufacturers of Penetrol.

INDIANAPOLIS, IND.

Pumps—DEAN BROTHERS PUMPS, INC., 323 W. Tenth St.

KANSAS CITY, KANSAS

Pumps—PROPULSION ENGINE CORP., 7th & White Eagle Rd., Kansas City, 15, Kansas. Light Weight Portable Bilge Pumps. Two Models—8 Ft., 12,000 Gals. 11 Ft. 7,500 Gals.

LEETONIA, OHIO

Marine Tools—LEETONIA TOOL CO., THE, Catalog free on request.

Quaker Marine Products

**BELTING CONVEYOR and TRANSMISSION
P. P. P. ROD PACKING
EBONITE SHEET PACKING
EBONITE STOP VALVE PACKING
PUMP VALVES, GASKETS
RUBBER HOSE for all purposes**

Distributors in every port.

QUAKER RUBBER CORPORATION

MAIN OFFICE—PHILADELPHIA 24, PA.

Branches

225 Broadway, New York 7, N. Y.
2035 So. Michigan Ave., Chicago 16, Ill.
2207-21 E. 14th St., Cleveland 15, Ohio
2315 Polk Ave., Houston 1, Texas

MARINE BOILER & SHIP REPAIRS ELECTRIC WELDING

G. E. BRADING

3221 East 92nd St., Chicago 17, Ill.
Phones: South Chicago 8-0960
Night & Sunday, South Chicago 8-0318

THE Columbia
Clothing Co.

303 West Superior St., **DULUTH, MINN.**

LORAIN, O.

Provisions—McHENRY, CHAS. N., 339-341 E. Erie Ave. City and Marine Meat Market and Grocery. Phone: 8134, day and night.

Repairs—LAKE ENGINEERING, Foot of East 9th St., Lorain, Ohio. Boiler and Steamship repairs, Welding and Steel Fabrication. Phone: 3290.

Shipbuilders—AMERICAN SHIP BUILDING CO., THE, Lorain Plant: Colorado Ave. Telephone: Lorain 8112. Hull, engine and boiler construction and repairs; dry-docking; launch service.

Soot, Firescale & Slag Eliminator—J. F. REAGAN 168 East Erie Ave. "Oxi Crystals" eliminate soot, firescale, slag while boilers operate normally. Reduces smoke while in port.

LOUISVILLE, KY.

Packing—C. LEE COOK MFG. CO., 916 S. 8th St. Packings for all operating conditions. Great Lakes Representative: Tom Sords, 800 Marshall Bldg., Cleveland, Ohio.

MANTITOWOC, WIS.

Food Market—JOHN M. KADOW CO., 1123 Washington St. Meats, Groceries, Hardware, Ropes, etc. Phone 3353. Night Phone 7206.

Shipbuilders — MANITOWOC SHIPBUILDING COMPANY. Designers and builders. Complete Dry Docking and repair facilities for repairing Hulls, Boilers and Machinery. Full line of Oils, Grease, Packing and other Engine Room Supplies.

Supplies (Engineers, Captains)—STANGEL, J. J., HARDWARE CO., Eighth & Quay. Steam packings. Wire and Manila Rope. Refrigerator service. Phone: 3303.

PORTER'S FRIEND METAL POLISHING CREAM

The Best Silver Polish for the
Steward's quarters.

The Best Brass Polish for
Mates and Engineers.

For Sale at All Ship Chandlers

NORTH AMERICAN POLISH CORP.

9517 Cumberland Ave. Cleveland 4, Ohio

CARL H. MEISER

MEATS — GROCERIES — SUNDRIES
MARINE SUPPLIES

24 HOUR LAUNCH DELIVERY
818 PEACH ST. Phones: { 23-637 24-053
ERIE, PA. { 23-638 65-110
Residence Night Calls C 66148

LAKE ENGINEERING

Foot of East 9th St., Lorain, Ohio

Marine and Industrial Boiler Repairs
Steamship Repairs—Welding Engineers
Portable Air and Welding Machines
Steel Fabrication

MARINETTE, WIS.

Marine Supplies—SUNKIST FRUIT STORE, 1908
Hall Ave., Marinette, Wis. Fresh & Smoked
Meats, Vegetables, Fruits, Groceries, Laundry
Service. Phone: 2-3525, Nite Phone: 2-3441.

MILWAUKEE, WIS.

Repairs—MERTES-MILLER INC., 1561 S. Barclay
St. Marine Boiler, Hull and Ship Repairs,
Electric-Acetylene Cutting and Welding. 24-
Hour Service. Day Phone: MITcheld 7570.
Night Phone: EDgewood 2-6514.

Provisions—GEO. B. DALY MARINE MARKET,
502 S. Second St. Meats and Groceries. Phone:
Daly 6910, DALy 6911. Night phone: SH.
3122.

Ship Repairs & Supplies—SAEFKE MARINE
CORP., 830 North Fourth St. Pipe, Valves
and Fittings, Packing and Marine Supplies of
all kinds. Office phone: MARquette 8-3488.
Night phone: BRoadway 2-2691, LAKeside
8-0050.

Towing—CLARK'S TOWING CO., 130 So. Water
St. General Towing & Harbor Service. Tugs
equipped with radio telephone.

NEW YORK, N. Y.

Pump Valve Service—DURABLA MANUFACTUR-
ING CO., 114 Liberty St., New York 6, N. Y.
The Strongest, Lightest, Most Efficient Valve
Made.

Rubber Goods—QUAKER RUBBER CORP., 53
Park Place. Also P. P. P. Rod Packing,
Ebonite Sheet Packing, Ebonite Stop Valve
Packing and Pump Valves. Hose and Belting
for all purposes. Phone: DIghy 9-3115.

DOWNEY FUEL, INC.**Oswego, N. Y.****Oil Dock****No. 2 Oil****Diesel Oil****Pumped and Metered****From****Dock Storage To Ship****Fresh Water Line***MARINE MARKET***A. NOZERO & SONS**GROCERIES—MEATS—FRUITS—VEGETABLES
Phone 636 or 603J—Day or Night Service**HOUGHTON, MICH.***Port of*

Houghton, Hancock, Ripley and Torch Lake

When you order Marine Tools from your source of supply be sure to specify Leetonia Brand: The mark Leetonia on tools is your assurance of quality.

Catalog free upon request.

THE LEETONIA TOOL COMPANY

Leetonia, Ohio, U. S. A.

OSWEGO, N. Y.Oil—DOWNEY FUEL, INC., OSWEGO, N. Y.
Oil Pumped and Metered from Dock to ship.**PITTSBURGH, PA.**

Fuel—BEACON COAL, Eastern Gas and Fuel Associates, Koppers Bldg. Coal.

Radar — WESTINGHOUSE ELECTRIC CORP.,
P.O. Box 868, Pittsburgh 30, Pa. MU-1
Radar built specifically to meet Lake Carriers' Specification.**PORT COLBORNE, ONT., CANADA**

Sales & Service Marine Instruments, Compass Adjustments—THE ONTARIO HUGHES OWENS CO., LTD., 146 West St., Port Colborne, Ont. Canada. Phone: 3673.

PORT HURON, MICH.

Fuel—PORT HURON COAL & DOCK CO. Bunker coal, accurately weighed in hoppers suspended on Fairbanks automatic scales. Fast fueling, 24 hours per day. Best West Virginia Coals. Located on St. Clair River beside International Tunnel.

Laundry—TROY LAUNDRY CO., 519 Price St.
Paint Canvas—ROBESON PRESERVO CO.**SAGINAW-BAY CITY, MICH.**

Tug Service and Supplies—HURON TUG AND SUPPLY CO., 24 hour service on Saginaw River, Saginaw Bay and Lake Huron. Radio Telephone: "VIGILANT" or Phone: 2-6230. Night Calls: 2-3701 or 2-9166.

Northern Engineering & Supply Co. Limited

We have experienced men and Necessary Plant equipment to do all kinds of High Class Marine Work, Welding and Cutting, Foundry Work, Sheet Metal Work, Pipe, Valves and Fittings. Full Line of Engineering and Marine Supplies.

GIVE US A TRIAL

Phones: { 650 S
3826 S Night Phones: S. 1833
763 S S. 763

NORTH ST. FORT WILLIAM, ONT., CAN.

SUNKIST FRUIT STORE

MARINE SUPPLIES

FRESH AND SMOKED MEATS FRESH FRUITS
GROCERIES VEGETABLES

LAUNDRY SERVICE

PHONE 2-3525 NITE PHONE 2-3441
1908 HALL AVE. MARINETTE, WIS.

GEO. B. DALY MARINE MARKET

Meats and Groceries

MARINE SUPPLIES—LAUNCH DELIVERY

502 South Second St. Milwaukee, Wisc.
Phone—DALY 8-6910-6911 Night Phone SH 4-3122

SANDUSKY, O.

Soot, Firescale & Slag Eliminator—ASSOCIATED SUPPLIERS, INC., 121-125 W. Water Street. "Oxi Crystals" eliminate soot, firescale, slag while boilers operate normally. Reduces smoke while in port.

Supplies—ASSOCIATED SUPPLIERS, INC., 121-25 W. Water St. Complete Line of Ship Hardware including Packing, Pipe, Valves. Phone: 18. Night Phone: 3629.

SARNIA, ONT., CANADA

Repairs—GOODISON, INDUSTRIES, LTD. All kinds of repairing, night and day. Phone: 2700. Night: 3427-W (L. S. Knudsen)

SAULT STE. MARIE, MICH.

Jeweler—J. L. ERARD, 123½ West Portage Ave., Sault Ste. Marie, Mich. Marine Clocks and Watch Service. Phone: 2907.

Laundry—CRISP LAUNDRY CO., 413-21 West Portage Ave. The best of service day or night.

Soot, Firescale & Slag Eliminator—PITTSBURGH SUPPLY CO. "Oxi Crystals" eliminate soot, firescale, slag while boilers operate normally. Reduces smoke while in port.

SHEBOYGAN, WIS.

Provisions—HEINECKE CO., 805 Indiana Ave., Sheboygan, Wisc. Poultry, Eggs, Fish and Dairy Products. Phone: 2-4042.

SCHENECTADY, N. Y.

Propulsion and Electrical Auxiliaries—GENERAL ELECTRIC COMPANY, 1 River Road. Geared-turbine, turbine-electric, and diesel-electric propulsion; motors and control; repairs and replacements. See Page 22 for Great Lakes facilities.

Division of PETCO CORPORATION

**CLARK'S
TOWING
COMPANY
MILWAUKEE**

**Owners & Operators
of Tugs
WELCOME, ROGER
& MILWAUKEE
DAILY 8-1406**

130 SO. WATER ST. • MILWAUKEE, WIS.

**GENERAL TOWING & HARBOR SERVICE
TUGS EQUIPPED WITH RADIO TELEPHONE**

Direct all correspondence to:

Exec. Offices, 8530 W. National Ave., Milwaukee

Telephone, 158

CRISP LAUNDRY CO.

**The best of service day and night
ON LOCK WALLS
Sault Ste. Marie, Michigan**

**HEINECKE COMPANY
CHOICE MEATS**

**Poultry, Eggs, Fish &
Dairy Products
Marine Trade Solicited**

**805 INDIANA AVE. SHEBOYGAN, WIS.
PHONE 2-4042**

SOUTH CHICAGO, ILL.

Fuel—SOUTH CHICAGO COAL AND DOCK CO.,
7917 S. Exchange Ave., Bunker Fuel, 24 hour
Lighter Service. Phone SAGinaw 1-4000.

Repairs — CALUMET SHIPYARDS & DRY
DOCK CO., 94th Street and Calumet River.
General Ship Repairs. Boiler Repairing and
Electric Welding. General Machine Work and
Electrical Repairing. Phone: SOUTH Chicago
8-7640.

Soot, Firescale & Slag Eliminator—BRICKETT &
GLASS, 10034 Indianapolis Blvd. "Oxi
Crystals" eliminate soot, firescale, slag while
boilers operate normally. Reduces smoke
while in port.

STURGEON BAY, WIS.

Marine Supplies — SCOFIELD COMPANY, Stur-
geon Bay, Wisc. Complete stock of hardware
and marine supplies.

SUPERIOR, WIS.

Electrical Repairs—BENSON ELECTRIC CO., 3rd
St. and Grand Ave. Electric Whistles, Rud-
der Indicators and Marine Electrical Fittings.
Phone: 5548. Night Phones: 8187, 2-1913 or
9397.

Laundry (Marine)—HAWKINS MARINE LAUN-
DRY CO., Duluth—Superior Harbor. Phones:
Day, dial 5565; Nights, 5132.

Marine Supplies — ALLOUEZ MARINE SUPPLY
CO., INC. Telephone Dial 5567.

Radar-Radio—RADIOMARINE CORP. OF AMER-
ICA SERVICE STATION, East End Radio
Shop, 2127 East 5th St., Phone: SU 8449.
Night Phone: SU 3933.

Manitowoc Shipbuilding Co.

Manitowoc Wisconsin
Telephone 6621

Designers and builders of all types of floating equipment.

Complete facilities for repair and construction work of all kinds.

Steel Floating Drydock 7000 tons capacity.

Builders and repairers of Boilers, Engines and Marine Machinery.

J. L. ERARD, *Jeweler*

Marine Clocks & Watch Service

123½ W. Portage Ave.

Sault Ste. Marie, Mich.

Phone 2907

SCOFIELD COMPANY

Sturgeon Bay, Wisconsin

Established 61 years ago

You will be surprised to find our complete stock of Hardware and Marine supplies, so many fine shipyards and such a fine town.

SUPERIOR, WIS. (Continued)

Shipbuilders—KNUDSEN BROS., 3rd St. and Clough Ave. Dry Docking, Boiler, Engine and Hull Repairs—floating equipment. Phone from Superior dial 5913, from Duluth, Melrose 82.

TOLEDO, O.

Boiler Repairs—PRICE BOILER & WELDING Co., 918 Water St. Certified Welding. Norman Edgar, Marine Supt. Phone: ADams 5294; Night Phones: Kingswood 7374, Jordan 2188.

Boiler Repairs—HANSEN, HANS, WELDING CO., INC., 318 Washington St. Certified Welders, Electric and Acetylene, Tank Builders, Smokestack and Boiler Repairs. Floating Equipment. Phone: ADams 1251. Night Phone: Jordan 2363, Kingswood 6101.

Jobbing Machine Work—GREAT LAKES FOUNDRY & MACHINE CORP., 202 Cherry St. Jobbing Machine Work. Gray Iron and Semi-Steel Castings. Phone: MA 4027.

Laundry (Marine)—PHEASANT MARINE LAUNDRY, 1145 Miami St. We serve to serve again. Phones: Day, TAYlor 1329; Night, TAYlor 2664; or LAWndale 9451.

Lubricants—FISKE BROTHERS REFINING CO., 1500 Oakdale Ave., Telephone: TAYlor 2491.

Marine Supplies—VALLEY CAMP STORES CO., THE, 728 Water St. Quality groceries, meats and produce, 24 hour launch and truck service. Erle A. Kimmins, Manager. Phone: ADams 2911; Residence Phone: Pontiac 1322.

Refrigeration Service—RICHES REFRIGERATION SERVICE, 735 Redwood Ave., Toledo, 9, Ohio. Sales, Service, Engineering, Day, Night. Phone: AD 9533.

Shipbuilders—AMERICAN SHIP BUILDING CO., THE. Toledo Plant: 2245-57 Front St., Hull, Engine and Boiler Repairs, Dry Docking, Launch Service. Telephone: TAYlor 2475.

MERTES-MILLER, INC.

—Over 50 Years—

**Marine Boiler
Hull and Ship Repairs**

**Phone Mitchell 5-7570
Night Phone Edgewood 2-6514**

Electric Welding-Cutting
U. S. Marine Certified Welders
Night Phone: Edgewood 2-6514

1561 South Barclay St. Milwaukee, Wis.

TWIN PORTS

When in Twin Ports give us a call for your laundry. Four hours service if necessary when coming up light. Launch and Truck service. Day or night. Give our plant a visit.

The Old Reliable

HAWKINS MARINE LAUNDRY

Superior, Wis.

Phone: Dial 5565 Nights: Dial 5132

ALLOUEZ MARINE SUPPLY COMPANY, INC.

Telephone Dial 5567
SUPERIOR, WISCONSIN

Soot, Firescale & Slag Eliminator—HARDY & DISCHINGER, 121-123 West St. Clair Street. "Oxi Crystals" eliminate soot, firescale, slag while boilers operate normally. Reduces smoke while in port.

Supplies (Captains' and Engineers')—HARDY & DISCHINGER CO., THE, 121-123 N. St. Clair St. Delivery Boat I-No-U. Phone MAin 1124, LU. 72334, ADams 7364. Delivery Agents for Oil Companies.

TROIS RIVIERES, P. Q. CANADA

Machine Shop—DESROBERTS and PITT ENGRG. REGD., 309 St. Georges Street. General Ship Repairs. Light and heavy work. Phone: 960; Night: 2015-3534.

In Duluth, Minnesota

It's **MASTER RADIO**

30 West First Street

Dealers of Zenith and Motorola

"We Sell The Best and Fix The Rest"

Tubes—Batteries—Repair Service

NORTHERN REFRIGERATION SERVICE, INC.

Service when you need it

Duluth

Mel. 1506

Nites—call: Rad 1714 or Dial 8459

Superior

Dial 5702

KNUDSEN BROS. SHIPBLDG. & DRY DOCK CO.

Facilities for Dry Docking and
Complete Vessel Repairs

Tel: From Superior 5913
From Duluth Mel. 82

NORTHERN ENGINEERING CO.

Machinist • Patternmakers
Welders

Tel: 4211 Superior-Wisconsin

PRICE BOILER & WELDING CO.

918 Water St. Toledo, Ohio

Norman Edgar, Marine Supt.

Boiler and Hull Repairs
Certified Welders, Floating Equipment

Phones: Day—Adams 5294:
Night—Kingswood 7374; JJordan 2188

Founded 1856

GREAT LAKES FOUNDRY & MACHINE CORPORATION

Cherry & Water Streets
Toledo 4, Ohio
Main 4027

Engine & Pump repairs—Gray Iron Castings

RICHES REFRIGERATION CO.

SALES—SERVICE
ENGINEERING
MARINE INSURED

ADams 9533

DAY—NIGHT
735 REDWOOD AVE.
TOLEDO 9, OHIO

HANS METALLIZING HANSEN WELDING CO., INC.

Boiler Repairs • Certified Welders
Machine Shop • Blacksmith Shop

318 Washington Street, Toledo, Ohio
Day Phone ADams 1251 Night Phone JJordan 2363
Kingswood 6101

THE HARDY & DISCHINGER CO.

Delivery Service
CAPTAINS' AND ENGINEERS'
SUPPLIES

Delivery Agents for Oil and Compound
Companies.

Telephone:
Main 1124

121 N. St. Clair St.

Toledo, Ohio

Office Phone—Marquette 8-3488

MARINE SERVICE

SAEFKE MARINE CORP.

Formerly SAEFKE NIENOW CO.

POWER ENGINEERS SUPPLIES

MARINE REPAIRS OF ALL KINDS

PIPE, VALVES AND FITTINGS
PACKING OF ALL KINDS
MACHINE SHOP IN CONNECTION

NIGHT PHONES:

Broadway 2-2691
Lakeside 8-0050

830-832 N. FOURTH ST.
MILWAUKEE 3, WIS.

INDEX TO ADVERTISERS

Allouez Marine Supply Co., Inc.	178
American Marietta Co.	14
American Oil & Paint Co., The	164
American Ship Building Co., The	177
.....Inside Front Cover, 151, 153, 167,	127
Anchor Packing Co.	127
Associated Suppliers, Inc.	146
Baldt Anchor, Chain & Forge Div., The Bos- ton Metals Co.	49
Benson Electric Co.	175
Boom Boiler & Welding Co., The	158
Brading, G. E.	166
Calumet Shipyard & Dry Dock Co.	175
Carlson Sheet Metal Co., The	154
Central National Bank of Cleveland	186
Christensen's Marine Newsstand	158
Clark's Towing Co.	174
Cleveland Steam Gauge Co., The	156
Coffin, The J. S., Jr. Co.	140
Columbia Clothing Co.	166
Cook, C. Lee, Mfg. Co., Inc.	132
Crisp Laundry Co.	174
Daly, Geo. B., Marine Market	172
Dean Brothers Pumps Inc.	128
Dearborn Chemical Co.	8
Desroberts & Pitt Engrg. Regd.	179
Dowell, Inc.	26
Downey Fuel Inc.	170
Durabla Manufacturing Co.	16
Eastern Gas & Fuel Associates	37
Elgin Softener Corp.	32
Ensign Products Co.	138
Erard, J. L.	176
Farrell & Curry	149
Ferbert-Schorndorfer Co.	14
Flood Company, The	164
Ford Brothers, Inc.	149
Fries & Schuele Co., The	154
Frontier Marine Supply Co.	149
Gamlen Chemical Co.	30
Garlock Packing Co., The	36

Gehm, John, Co.	149
General Electric Co.	22
Goodison Industries, Ltd.	173
Great Lakes Foundry & Machine Corp.	180
Gunn, P. J.	149
Hanna Coal & Ore Corp.	136
Hansen, Hans, Welding Co., Inc.	181
Hardy & Dischinger Co., The	181
Harper Packing Co., Inc.	45
Hausheer & Sons Co., The	157
Hawkins Marine Laundry	178
Heinecke Company	174
Huron Tug & Supply Co.	171
Kadow, John M., Co.	167
Keckley, O. C., Co.	43
Knudsen Bros. Shipbuilding & Dry Dock Co.	180
Lake Engineering	168
Lake Erie Manufacturing Co., Inc.	160
Leetonia Tool Co., The	170
Leopold Bros. Furniture Co.	156
Lockwood, Claude, Marine Photographer	161
Lubriplate Div., Fiske Bros. Refining Co.	12
McHenry, Chas. N.	167
Magner, Edward, & Sons	160
Manitowoc Ship Building Co.	176
Master Radio Sales & Service	179
Meiser, Carl H.	168
Mertes-Miller Inc.	178
Miller-Anderson Co.	158
Mollenberg-Betz Machine Co., Inc.	162
Morrison, Frank, & Son Co.	40
Mulholland Hatch Fastener Co., The	155
National Aluminate Corp.	42
National Malleable & Steel Castings Co.	4
Nicholson & Hall Boiler & Welding Corp.	147
Nicholson Terminal & Dock Co.	144
North American Polish Corp.	168
North Branch Shipyard, Inc.	153
Northern Engineering & Supply Co., Ltd.	172
Northern Refrigeration Service, Inc.	179
Nozero, A., & Sons	170
Oldman Boiler Works, Inc.	20
Ontario Hughes Owens Co. Ltd.	150

Oxi Corporation	34,
147, 151, 153, 159, 161, 163, 167, 173, 175, 179	
Pattison, W. M., Supply Co., The	6
Pheasant Marine Laundry	177
Port Huron Coal & Dock Co.	142
Price Boiler & Welding Co.	180
Propulsion Engine Corp.	152
Quaker Rubber Corp.	153, 159, 166, 169
Radiomarine Corp. of America.	149, 151, 157, 175
Reliance Gauge Column Co.	44
Rennick, Tom J.	147
Reynolds Ship Repair, Inc.	162
Richards & Coffey, Attorneys at Law	147
Riches Refrigeration Co.	181
Ridge Tool Co., The	24
Robeson Preservo Co.	28
Rud Machine Company	164
Russell & Watson Div. of Ruslander & Sons, Inc.	50
Saefke Marine Corp.	182
Scofield Company	176
Serene Kleaner Co.	48
Sherwin-Williams Co., The	7
Slattery's Marine Service	165
Smith Brothers	153
Society for Savings	3
Sords, T. V.	Inside Back Cover
South Chicago Coal & Dock Co.	162
Standard Oil Co. of Ohio, The	46, 47
Stangel, J. J., Hardware Co.	167
Stephenson, N. T.	163
Sunkist Fruit Store	172
Tashenberg Bros. Boiler Works	149
Texas Company, The	38, 39
Thomson, J. & A., Co.	159
Terice, H. O., Co.	10
Troy Laundry Co.	171
Truscon Laboratories, The	130
Upton-Walton Company	Outside Back Cover
Valley Camp Coal Co., The	18, 134
Westinghouse Electric Corp.	148
Weyls, W. L.	160



HOW TO SAVE

Start a MARINE SAVINGS ACCOUNT at this bank and deposit something every pay day save regularly but save something . . . Every account insured up to \$5,000.00.

CENTRAL NATIONAL BANK

of Cleveland

Member of Federal Deposit Insurance Corporation

T. V. SORDS

800 Marshall Building
CLEVELAND 13, OHIO
Cherry 7330

GREAT LAKES REPRESENTATIVE

C. LEE COOK MFG. CO.

*Metallic Rod Packings
Graphitic Iron Piston Rings
Lockwood Carlisle Type Marine
Piston Rings*

H. O. TRERICE CO.

*Pressure Gauges—Thermometers—Traps
and Repair Service*

**ERNST WATER COLUMN &
GAGE CO.**

*Water Columns—Try Cocks
Gage Glasses & Gaskets*

THE CRANE PACKING CO.

"John Crane" Packings, Mechanical Seals

F. FERGUSON & SON

Ferguson Bronze Propellers

O. C. KECKLEY CO.

Precision Pressure Regulators

COOK ELECTRIC CO.

MagniLastic Expansion Joints

**SAFETY VALVE, REDUCING VALVE,
AND INJECTOR REPAIRS BY
MANNING-MAXWELL AND MOORE INC.**

Ship Chandlery

Vessel Outfits

Wire and Manila Rope—Nautical Instruments

The Upson-Walton Company

Marine Division

1310 West 11th Street

Cleveland 13, Ohio

Telephone: Main 7444