

1910

ARNOLD TRANSIT COMPANY

THE
"SNOWS"
ROUTE

THE
"FISHING
GROUNDS"

1910

ARNOLD TRANSIT COMPANY

THE
"SOO"
ROUTE

THE
"WESTERN
HUDSON"



GEO. T. ARNOLD
PRESIDENT & MANAGER

H. L. ARNOLD
TRAFFIC MANAGER

MICHAEL DOUD
GENERAL PASSENGER AGENT

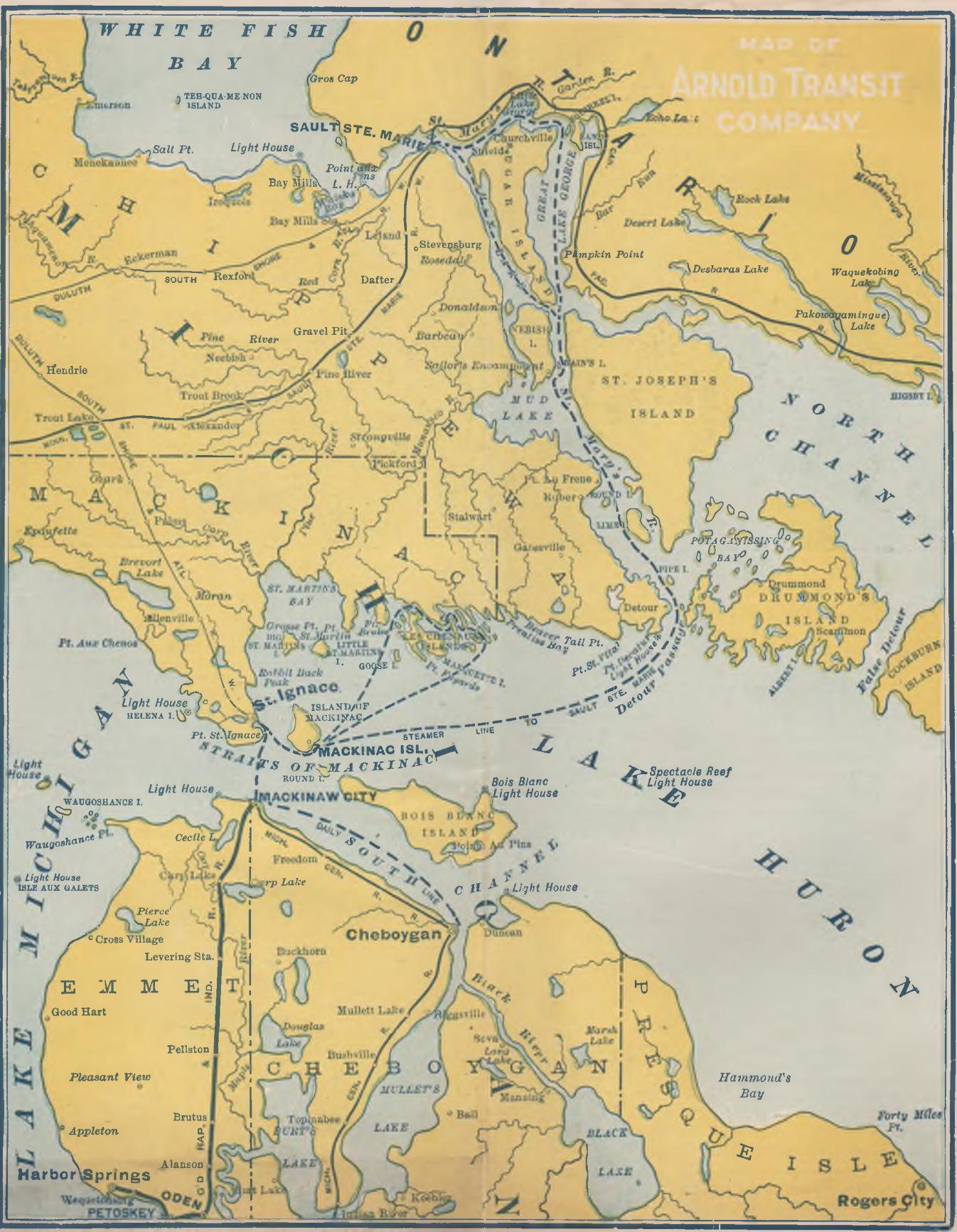
GEO. T. ARNOLD
PRESIDENT & MANAGER

H. L. ARNOLD
TRAFFIC MANAGER

MICHAEL DOUD
GENERAL PASSENGER AGENT.

WHITE FISH BAY

MAP OF ARNOLD TRANSIT COMPANY



WHITE FISH BAY

MAP OF ARNOLD TRANSIT COMPANY

TEH-QUA-ME-NON ISLAND

SALT PT. LIGHT HOUSE

MONONAQUE

SOUTH REXFORD

HENDRIE

TROUT LAKE

ST. PAUL ALEXANDER

EXPEDITA

ST. MARTIN'S BAY

ST. MARTIN'S ISLAND

ST. MARTIN'S ISLAND

ST. MARTIN'S ISLAND

ST. MARTIN'S ISLAND

ST. MARTIN'S ISLAND

ST. MARTIN'S ISLAND

ST. MARTIN'S ISLAND

ST. MARTIN'S ISLAND

ST. MARTIN'S ISLAND

ST. MARTIN'S ISLAND

ST. MARTIN'S ISLAND

ST. MARTIN'S ISLAND

ST. MARTIN'S ISLAND

ST. MARTIN'S ISLAND

ST. MARTIN'S ISLAND

ST. MARTIN'S ISLAND

SAULT STE. MARIE

POINT ST. MARIE

STEVENSBURG

ROSEDALE

DONALDSON

BARBEAU

SAILOR'S ENCAMPMENT

STRONGVILLE

PICKFORD

STALWART

GATESVILLE

PL. LA FROE

HUBER

TRAVELER'S BOAT

TRAVELER'S BOAT

TRAVELER'S BOAT

TRAVELER'S BOAT

TRAVELER'S BOAT

TRAVELER'S BOAT

TRAVELER'S BOAT

TRAVELER'S BOAT

TRAVELER'S BOAT

TRAVELER'S BOAT

TRAVELER'S BOAT

TRAVELER'S BOAT

CHURCHVILLE

LAKE GEORGE

LAKE GEORGE

LAKE GEORGE

LAKE GEORGE

LAKE GEORGE

LAKE GEORGE

LAKE GEORGE

LAKE GEORGE

LAKE GEORGE

LAKE GEORGE

LAKE GEORGE

LAKE GEORGE

LAKE GEORGE

LAKE GEORGE

LAKE GEORGE

LAKE GEORGE

LAKE GEORGE

LAKE GEORGE

LAKE GEORGE

LAKE GEORGE

LAKE GEORGE

LAKE GEORGE

LAKE GEORGE

LAKE GEORGE

ROCK LAKE

DESERI LAKE

DESBARAS LAKE

WAQUEKOBING LAKE

PAKOWAMINGUE LAKE

WAQUEKOBING LAKE

WAQUEKOBING LAKE

WAQUEKOBING LAKE

WAQUEKOBING LAKE

WAQUEKOBING LAKE

WAQUEKOBING LAKE

WAQUEKOBING LAKE

WAQUEKOBING LAKE

WAQUEKOBING LAKE

WAQUEKOBING LAKE

WAQUEKOBING LAKE

WAQUEKOBING LAKE

WAQUEKOBING LAKE

WAQUEKOBING LAKE

WAQUEKOBING LAKE

WAQUEKOBING LAKE

WAQUEKOBING LAKE

WAQUEKOBING LAKE

WAQUEKOBING LAKE

WAQUEKOBING LAKE

HARBOR SPRINGS

CHEBOYGAN

BLACK LAKE

ROGERS CITY

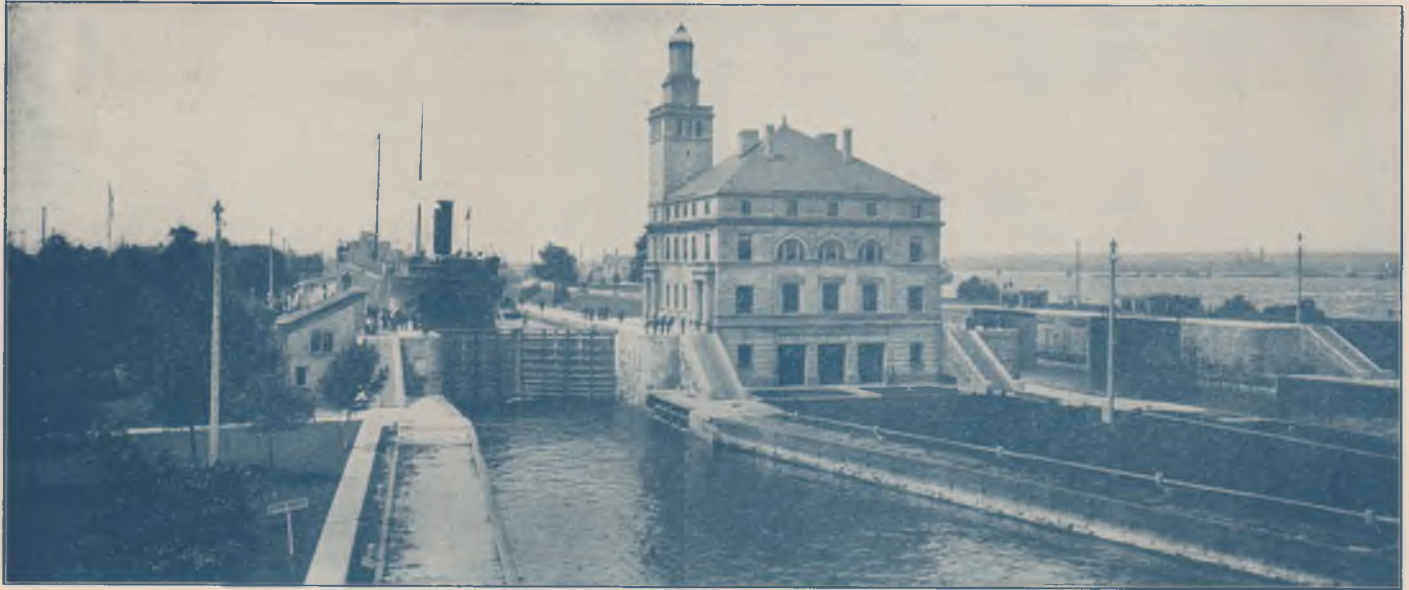
PETOSKEY

ODEN

BLACK LAKE

ROGERS CITY

MACKINAC TO THE "SOO"



Ship Locks, Sault Ste. Marie

The St. Mary's River by Daylight

THE "SOO" ROUTE

The Most Charming Inland Water Trip on the American Continent

Covering 150 miles from Cheboygan, through the Straits and via far-famed Mackinac, across Lake Huron, past Drummond and St. Joseph Islands—military outposts of early civilization in the Northwest Territory—through the wonderful Hay Lake Channel to Sault Ste. Marie, the St. Mary's Rapids, and the greatest ship locks in the world.

THE traveled tourist who would seek rest and pleasure on his summer vacation, knows by many and varied experiences that no place offers such inducements for complete change, rest, and quick upbuilding, of mind and body as far-famed Mackinac and the resorts along the St. Mary's River and upper Lake Huron—a land where cool, ozone-laden lake breezes, fragrant with the scent of the pine and the juniper, and the ever-shifting panorama of sea and sky bring one again in touch with Nature in her happiest moods.

The lake region of Northern Michigan offers many advantages, and is free from the scorching heat that makes midsummer a period to be dreaded. The environs of this beautiful lake country are superb, and for many years it has been the favorite resort of people from all sections of the country.

It is a mecca for the hay-fever sufferer. After a few days in this delightful land, the malady entirely disappears and one is free to enjoy himself until—

" . . . The frost is on the pumpkin
and the fodder's in the shock,"

and he can return home without fear of discomfort. Mosquitoes and like insect pests are a thing unknown, a very great

consideration when selecting the region where the outing shall be spent.

The region is very accessible, and is reached in a mere fraction of the time required for a trip to the mountain or coast resorts. In these days of luxurious boat and train service, the trip is not a monotonous or tiresome one.

It is mainly to the enterprise of the Arno'd Transit Company that The "Soo" Route and the Les Cheneaux trips owe their popularity. Beautiful as these regions are, until the Arnold Transit Company opened its lines, they were inaccessible and their alluring loveliness was almost unknown to the larger portion of the tourists. Now all is changed. The "Land of the Chippewas" is easily reached by these steamers, running direct, without delay, and affording every comfort throughout the journey. Travelers from the South can make direct connections via Cheboygan, Mackinaw City, St. Ignace



Round Island,
St. Mary's
River



"Dark Hole," St. Mary's River

or Mackinac Island, while tourists traveling the northern routes will find this country equally accessible via Sault Ste. Marie.

It is at far-famed Mackinac that the traveler from the South gains his first glimpse of this beautiful country. From Mackinac to Les Cheneaux and to Sault Ste. Marie the trips are ever-shifting panoramas of beauty. Each turn brings into view new vistas of surpassing loveliness. Nor is there a bit of monotony on these trips. From the moment the steamer leaves one terminal until the other is reached there is a continual succession of interesting scenes to attract and hold the attention of the traveler. It may be a beautiful sailboat, skimming the waves with its joyful party of pleasure seekers, or a wheezing tug, straining its every fibre pulling some manner of heavily laden craft, or perhaps a boom of logs for the pulp or saw mills at a near-by port.

Then, too, there are the majestic freighters, with their thousands of tons of cargo, ploughing along the trackless ways, rushing their freights to the busy marts to supply humanity's needs; or their queer, almost submerged brothers, the whalebacks, at a distance giving one the impression of some antediluvian monster come down to present times, as they rush through the waters, leaving behind their long, winding trail of smoke.

There are innumerable islands dotting the sea, each with a distinctive beauty of shape and coloring and inviting closer



Whaleback Leaving Poe Lock

inspection and exploration, while off in the distance, peals the solemn Dong! Dong! of a bell-buoy, set to mark some sunken rock or hidden shoal which might wreck the stout ship of the unwary mariner.

The channels and vessel courses in the Straits and St. Mary's River regions are the most tortuous and difficult on the lakes. However, their navigation has been greatly simplified during recent years through the many aids to the mariner, such as buoys, range lights, fog signal stations and lighthouses which have been placed and are maintained by the National Government. Along the sixty-two miles from Lake Huron to Lake Superior there are more than one hundred gas buoys, range lights, and course guides to assist in the navigation of this twisting and turning channel.

Many millions of dollars have been spent in widening and deepening the channels, and in providing facilities for the rapid handling of the immense commerce of the Great Lakes. The work is still going on, and is being pushed with ever increasing vigor in an effort to keep pace with the rapidly increasing necessities of the lake marine. Work is now in progress on a new and larger lock that will be in operation within three years. It is an interesting sight on the "Soo" trip to watch the immense dredges and steam shovels removing the rocky barriers of this new lock to be, to make way for the commercial expansion of the most progressive people on earth.



Lake George Light



Dredge at Work in Channel



Michigan Fish Hatchery



DeTour, Entrance to St. Mary's River

The greatest improvements aside from the improved lock facilities at Sault Ste. Marie, are the Hay Lake and West Neebish Channels. The Hay Lake Channel was opened in 1894 and, at that time, was thought to be sufficient for all possible demands. However, it was soon apparent that further improvements would be necessary to meet the demands of the ever increasing lake commerce and consequently the West Neebish Channel was decided upon. Work was rushed and it was opened to the general lake traffic in 1908. With the opening of these two channels, the danger of accidents was greatly lessened as all steamers use one channel going up the river and the other one on the down trip. These channels also shorten the steamer route about eleven miles, as all steamers were compelled to run via the old or Lake George Channel before their completion.

To those with a touch of the romantic in their nature this region makes special appeal. The entire Straits region abounds in legends, which with historical facts are woven together into one of the most interesting of tales. Here it was that the Manitou, or Gods of the Indian tribes, had their dwelling, Mackinac Island being their great hunting-ground and the spot where big councils were held.

According to the ancient legend, the Gitche Manitou, finding no place suitable for his dwelling, raised the Island of Mackinac from the waters and gave it to the spirits of the earth, air and water, then sent his messengers to tell those of every land that here 'midst these northern waters was a place prepared where they could come and rest, leaving all care behind. That the ascent to the plateau of the Island might be easy, the Manitou made the Arched Gateway so that all who visited might enter. The Great Spirit's wigwam was built a short distance from the arch, but during the years that followed it was turned to stone and now stands, the great pyramid of Sugar Loaf, to mark the dwelling of this great and good Manitou. Legends are told of many other interesting points, and some have historical interest as well.

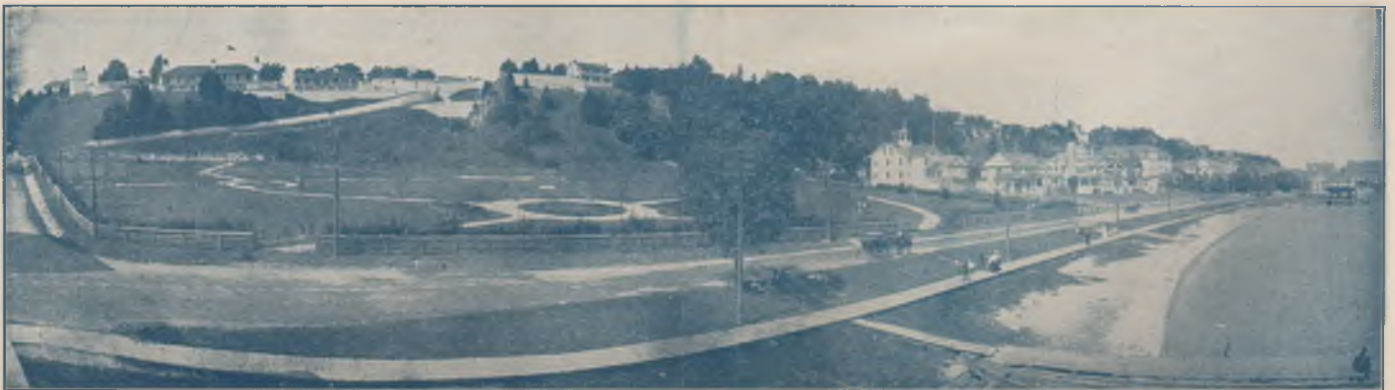
The St. Mary's River and Sault Ste. Marie are in the heart of the Hiawatha country, made famous by Longfellow's immortal poem. Here it was that Hiawatha and Minnehaha, the giant Kwasind and the stealthy Pau-Puk-Kewis lived beside the Pan-

wating—the St. Mary's River—and the surrounding waters were the theatre of action of these heroes' deeds. The history of the Manitou fills the whole region, and the visitor should be familiar with Longfellow's poem if he would appreciate the charm of the Great Lakes region, in its power, its vastness, and its solitude.

Leaving the legendary associations and delving into the vast storehouse of historical fact, we find the tale continues just as interesting. It was in 1641 at the rapids of the Saut du Gaston that the martyr Jesuit priests, Fathers Jolques and Raymbault, first told the story of the Cross to a concourse of two thousand braves who had assembled in the populous Indian town at the Rapids. Here they established the mission of Ste. Marie du Sault, and here grew up the settlement of Sault Ste. Marie, the oldest in Michigan and one of the first in the Northwest.

Thirty years later Jacques Marquette established a mission at St. Ignace. About the same time Fort Michilimackinac, a wooden fortification with log bastions, was built on the south side of the Straits at Mackinaw City. In 1760 when England wrested her Canadian possessions from France, this fort was seized and thenceforth occupied by British troops. Three years later nearly the entire garrison was slaughtered by the Indians during the revolt against the English, familiarly known as Pontiac's conspiracy.

It was planned, under the leadership of the French, that the entire chain of British forts was to be captured and the English driven from the country. June 4, 1763, the King's birthday, was the date fixed for the carrying out of this purpose, and all British posts were to be attacked simultaneously. The story of how the Indians, after protesting in strongest terms their loyalty to the British, indulged in a game of ball, ostensibly in honor of the British King, drew the attention of the garrison; of how the ball, as if by accident was tossed within the stockade, the Indians rushing after it; when once inside, changing the cries of the game to the war-whoop, seizing knives and tomahawks which the squaws had brought within the fort secreted under their blankets, and falling upon the completely surprised garrison, slaughtered the soldiers before they could make any effectual resistance, is a tale that even yet stirs the heart and quickens the



Fort Mackinac from Chippewa Hotel Veranda

pulse with desire to avenge such Indian treachery and duplicity.

Pontiac's Conspiracy, although so successful of execution here, failed in its large purpose, and the following year British troops again occupied Fort Michilimackinac. In 1780 the Military Post was transferred to the island as offering a more defensible position, and the present fortification begun. From this time Mackinac and Sault Ste. Marie were the principal trading posts in the Northwest. Here the explorers, Coureurs de bois and fur traders had many stirring adventures. Here the red man and the white man met in council and in war, and through the narrow channels where now the monster steamers plow their way, the war canoe stole silently and stealthily on its mission of pillage and death.

To those who desire to get off the main traveled ways, and explore for themselves the devious trails and by-paths of the "Land of the Chippewas," the country along the St. Mary's River is ideal.

so much in its legendary lore and historical associations as in its present beauties and the modern facilities for reaching the delightful resorts of the north country or viewing at close range the beautiful vistas of lake and forest along the route. The swift and beautifully appointed steamers of the Arnold Transit Company depart and arrive at convenient hours, and are the only boats making the local stops along the St. Mary's River, yet covering the distance in the shortest time. This fact assures the traveler of more intimate views of the beauties along-shore than is possible from the decks of steamers which keep only in the main channel.

The scenery along the St. Mary's River is frequently and favorably compared with that along the Hudson. By many it is thought to be far more beautiful. The banks are not so high, nor the headlands so bold, but there is an infinitude of



Unveiling Marquette Monument

A trip from DeTour to Drummond Island is most interesting. After the Revolutionary War, when Mackinac Island was taken over by the Colonial Government, the English garrison was moved to Drummond Island, evidently in the hope of securing for the Crown this bit of disputed territory. Stockades and block houses were built, buildings erected, roads graded, the land was cleared and soon a prosperous settlement was established.

Some years later, when the disputes between Great Britain and the United States were settled, the court held that Drummond Island was United States territory, and the British were again compelled to move, this time to St. Joseph Island, farther up the river and adjudicated British territory. The transfer was made in mid-winter and much of the property of the garrison was either abandoned or lost on the trip across the ice.

The charm of this country to the latter-day traveler lies not

color, and the many bays, channels, and islands lend variety and give an enchantment to the scene which is lacking on the eastern river.

The return trip from Sault Ste. Marie is particularly fascinating. Leaving that port at five o'clock in the afternoon, the palatial steamer moves majestically with the current, meeting many immense freighters and passing beautiful scenes in rapid succession as she glides along through the sparkling water.

The lower reaches of the river are passed in the gloaming. It is an ideal hour on the water, when late afternoon is merging into twilight. Then comes the soft, caressing shadows of evening and the deeper shade and mystery of the night. As Point DeTour is passed, the course is changed to the westward, while a long, pale moonbeam, dancing o'er the water points the way to Mackinac, "The Fairy Isle."

LES CHENEAUX—A Famous Fishing Ground



Among the Les Cheneaux Islands

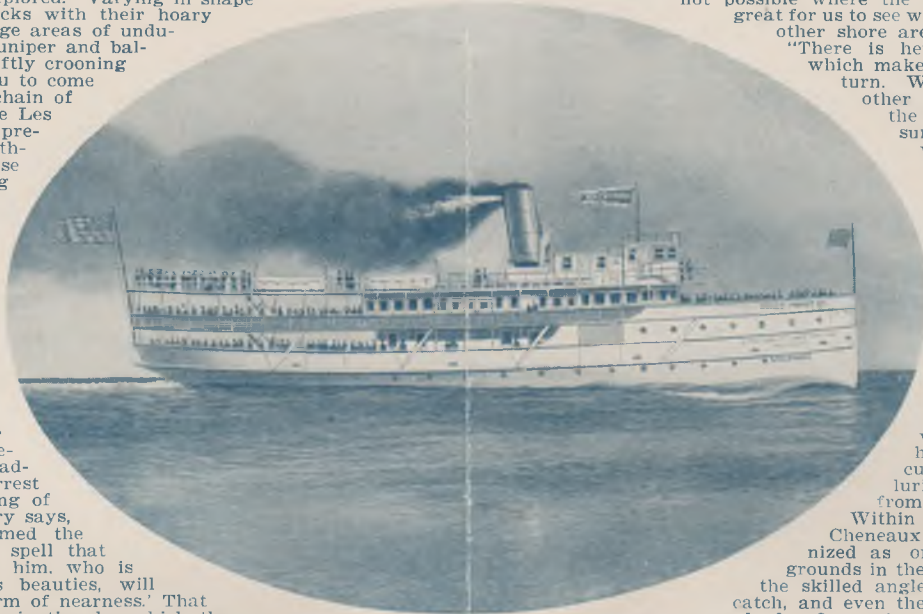
LIKE a string of emerald gems are the islands of the Les Cheneaux archipelago. Linked together by narrows, locks and channels that allow the skiff of the pleasure seeker to pass from one to another until the whole chain has been explored. Varying in shape and size from mere rocks with their hoary covering of lichen to large areas of undulating green, with the juniper and balsam, or the tall pines softly crooning their melody, calling you to come and rest. Such is the chain of islands that gives to the Les Cheneaux country the premier rank among the northern resorts. And these jewels of sparkling greenery adorn the bosom of as fair a water-scape as you will find in the Western World. Looking out over the blue waters set with strident and tilted sails, one asks, "What is the element of attraction that has most contributed to changing this region from a neglected wilderness to, perhaps, the most select and popular of all the northern resorts?" The reply is admirably made by Forrest Crissey, who, in speaking of the northern lake country says, "To one who has formed the habit of analyzing the spell that a landscape casts upon him, who is keenly sensitive to its beauties, will answer: 'It is the charm of nearness.' That is the secret of the fascination by which the Les Cheneaux country draws to itself those who are able to go wherever they choose, and holds them with a strong and ever-increasing loyalty. Great distances, and particularly long stretches of water, give us a sense of isolation, if

not of loneliness and depression. Often I have watched the effect of these elements upon persons of sensitive temperament; invariably the result was the opposite of gaiety. Here, to a rare degree, we have the feeling of nearness to our fellows not possible where the water perspective is too great for us to see what our neighbors on the other shore are doing.

"There is here a friendly proximity which makes itself felt wherever we turn. We are able to signal each other in passing so often that the whole community of the summer residents is, in a way, like one big family."

Nor is this beautiful spot lacking in other allurements. Mid the encircling channels and placid bays of grand old Huron; basking in the ink-kissed shallows or lurking in the depths of the cold spring waters lie the beauties that shall delight the heart of an Isaac Walton. From time immemorial this has been a battle-ground where skill and cunning have been matched against curiosity and caution in luring the finny beauties from the cool, green depths.

Within recent years the Les Cheneaux has come to be recognized as one of the best fishing grounds in the country. A place where the skilled angler is unlimited as to his catch, and even the inexperienced is always assured of a fine string of the finny tribe to exhibit to his friends while he recounts how this speckled beauty was lured from his hiding place, or of the gallant fight made before that hoary monster was finally conquered and brought to gaff alongside the boat.



New Steel Steamer "Mackinac"



A Day's Catch



"While Waiting for the Boat"



Arch Rock, Mackinac

The nearby streams are well stocked with brook trout, while in the channels, perch, pike and pickerel abound, and the great lake trout together with his larger and more voracious brother, the muscallonge, are present in sufficient numbers to keep one ever on the alert for a "strike" from one of these savage fighters of the deep.

You have been fishing all day and have a fine string of perch and pike. In fact, all you can comfortably carry, possibly more. Yet you want to make one more try before the day is done. Just drop your hook alongside of those rushes. Perhaps a voracious trout is there, or a muscallonge lying in wait for his evening meal. No luck? Well, try again, just in that little eddy by those rocks. There! And when the bait is taken, what a thrill goes through your body as you feel the first tug on the line and hear the humming reel as this king of fishes madly rushes to free himself from this sudden impediment to his freedom of motion. First, a dash straight away, then a counter, flanking movement or a charge straight toward the boat! Reel fast, now, or else he will slack the line and free himself from the hook that threatens to forever cut short his sway over the subjects of his kingdom.

And now the fight is on! Rush! Plunge! Counter-rush! Then suddenly the line is slack, the reel has ceased its hum. You give a gentle pull—solid. Then another and harder jerk—still solid. He has beaten you; has succeeded in snaring your line and now is free again. For a moment you are heart-sick. Such a big one, too. Then, suddenly and when you least expect, the rod is nearly torn from your hands by the suddenness of the rush, the reel is screeching its mad song and you are working, every nerve a-tingle, to stem this rush before it is too late and he has taken all the line from your reel. Then a "break," a shining, glistening body shoots clear of the water, a graceful curve, a splash, and he is off again. Ah! what a beauty. You catch your breath involuntarily—a yard long if he is an inch. You redouble your efforts, working like a Trojan, using every trick and bit of skill you know. So it goes for five, ten, fifteen minutes; it seems ages to you; your arms ache, you feel exhausted, your outing shirt is dripping, and still the mad rush continues. Will he never stop? Will he never tire? Will the tackle withstand another of those wild rushes? But, yes, he, too, is feeling the strain of the long fight. His rushes are less savage; you are slowly gaining on him; he is coming nearer the boat! Slowly now and carefully, you reel him in until he is alongside. The guide cleverly slips the gaff under his palpitating gills, a sudden dexterous twist and he is on his back, helpless. The guide seizes him and together you lift him into the boat. And now for home.

After supper, pipes are lighted and you sit by the open fire while recounting the happenings of the day.

The Les Cheneaux (Snows) Islands offer every inducement to those weary of the city who wish the change and invigoration incident to country life. Here one may come in close commune with nature and live a life of Arcadian simplicity, yet provided with all the material comforts and social environs.

The many excellent hotels provide for every want. Their service is universally good, and there is a community of interest and home-like atmosphere entirely lacking at other resorts. Everything is done to cater to the wishes of the guest and provide for his comfort.



Cottages at Les Cheneaux



On the Boulevard, Mackinac

Boats may be obtained at reasonable rates at all the ports of call. If desired, competent guides will take one to the best fishing grounds and also provide tackle, bait, and every equipment to take the finny beauties from the depths.

Camp life, for those so inclined, may be enjoyed to the full. Admirable sites may easily be procured. Supplies are easily obtained from the several stores at Hessel or Cedarville. Either place is easily and quickly accessible by the frequent trips of the steamers of the Arnold Transit Company which stop at many points among the islands.

If more of the social life is desired to add zest to this very pleasant existence, it may readily be found at the larger hotels. Concerts and social games are of daily occurrence, and informal dances are given during the week.

As a family resort the Les Cheneaux is without a peer. No more cool, healthful climate could be found. Tennis, croquet, golf, sailing and fishing may be enjoyed by old and young alike, while the pebbly beaches and land-locked channels afford delightful places for a dip in the clear lake waters.

The younger members may enjoy the aquatic sports without fear of mishap, for the sheltering islands are a safeguard against the sudden storms and squalls so frequently encountered at other lake resorts.

Many cottages have been erected and the number is being constantly increased as this land of enchantment makes new converts. Each season its devotees return in ever-increasing numbers to this, their favorite land, where they may again revel in the cool forests, or listen to the whispering pines and take deep draughts of the balsam-scented, ozone-laden air.

DELIGHTFUL PLACES FOR HEALTH AND PLEASURE

WHERE TO GO, AND HOW TO GET THERE.

Being a Brief Synopsis of the Places of Interest Along the Route

MANY vacation trips are incomplete or spoiled because the traveler is not informed concerning interesting places and beautiful scenes to be visited. In this brief space it is impossible to more than mention the principal interesting places.

CHEBOYGAN, the southern terminus of the Arnold Transit Company, is a busy little manufacturing city. A large paper-making industry is located here. The mills wherein millions of feet of logs are annually ground into wood pulp, and other mills where this wood fibre is converted into good print paper, are of more than casual interest to the ordinary traveler.

There are also large tanneries here where quantities of the finest leathers are produced. An interesting sight to many is a side trip through the saw mills. To one unfamiliar with modern methods of handling timber, these mills will be a

revelation. The principal interest, however, is centered on the Inland Route, a very pretty trip on the inland waters from Cheboygan to Oden and Petoskey. The trip takes one up the Cheboygan River, through Mullet Lake, Crooked River and Crooked Lake to Oden where connections are made with G. R. & L., suburban trains for Bay View, Petoskey, Harbor Springs and Charlevoix.

POINTE AUX PINS The fame of this resort is spreading rapidly and it is now as popular as many of the much older places. It is delightfully situated on the southern shore of Bois Blanc Island, about six miles from Cheboygan and is reached by the steamers of the Arnold Transit Company every morning. After a few days at this ideal spot where hay fever and malaria are unknown, life takes on a deeper, larger, sweeter meaning than ever before. Pine trees abound everywhere and form the principal growth of the Island. They give to the air a delicious fragrance and stimulating freshness. The Hotel Pines is a first-class modern house with the atmosphere of the home pervading and every facility is provided for the comfort and convenience of the guests. Besides it is possible to engage one of the numerous cottages by addressing the Point Aux Pines Association.

MACKINAW CITY is interesting chiefly for its associations with the early history of the Northwest Territory. Here it was that an entire garrison was butchered during an Indian uprising in 1763. The site of the old stockaded fort is but a short distance from steamer landing. The scene of the massacre has been set apart as a park, and a fitting monument erected in honor of the sturdy pioneers who here lost their lives.

ST. IGNACE, a quaint old city on the northern shore of the Straits, at the lower extremity of the Northern Peninsula, is another of the landmarks where history was made over two hundred years ago, and is easily reached several times daily by steamers of the Arnold Transit Company. It was here that Jaques Marquette, missionary and explorer, came in 1671 and founded the Jesuit mission of St. Ignatius du Michilimackinac, the second mission established in what afterward was known as the Northwest Territory. From this point in 1673 he started on his long cherished tour of exploration to discover the Mississippi, and to this place his devoted followers, four years later, brought his remains for burial in the church he had established. The present church, built on the site of the ancient mission, is but a short distance from the steamer landing. It contains many interesting relics of Marquette and the old mission, principal among them is the painting of St. Ignatius Loyola, founder of the Jesuits. The picture is over three hundred years old and was brought to America by Marquette himself.

There are several beautiful drives to be made, those to Rabbit's Back, Brevoort Lake and Gros Cap being the principal ones.

The big railroad ferries are an attraction of more modern times. These boats, the "Sainte Marie" and "St. Ignace," transport trains between Mackinaw City and St. Ignace every day in the year, frequently breaking ice several feet thick in forcing a passage.



Summer Home, St. Mary's River

MACKINAC ISLAND, the beauty spot of the lake region, is one of the principal ports of call of the Arnold Transit Company. It abounds in natural curiosities and beautiful scenes, most of which may be visited by taking the regular carriage drives. Among the many points of interest are the Arch Rock, a beautifully shaped natural arch 140 feet in height and framing a delightful view of Lake Huron; Sugar Loaf, a pyramidal rock 90 feet in height, the shape suggesting the name; Skull Cave, the hiding place of Alexander Henry at the time of the Indian massacre; Fort Holmes, the

remains of the old British fort of 1812; Lover's Leap and Robinson's Folly, with their legendary associations; Devil's Kitchen, a cave with blackened walls; Wishing Spring, where after partaking of its waters, one's wishes may come true; Pontiac's Lookout and Chimney Rock, each with its interesting legend; and British Landing, a beautiful pebbly beach on the west side of the island where the British landed on their expedition to capture Fort Mackinac.

The drives along the hard, smooth roads winding gracefully through natural forests of beech, birch, hard maple and pine are beautiful in the extreme. The boulevard drive along one of the finest and most picturesque roads in America, is one never to be forgotten. The drive takes one entirely around the Island, a distance of nearly nine miles. If one desires, it is possible to turn off at British Landing and come back through Early's farm and the scene of the battle of 1812, past the Wawashkimo golf grounds, then to the Annex and along the bluffs, past some of the finest summer homes in the west, back to the city.

The Crooked Tree drive and visits to Scott's Cave, the Rifle Range, Old Lime Kiln, Three Sisters and Pulpit Rocks and the Crack are also interesting. These latter are special trips for which individual arrangements should be made.

The old Fort is ever an interesting point and its history is that of the great Northwest. The headquarters of the American Fur Company is an old landmark, and many of the original records of this trading post, were the foundations of the present Astor fortune were laid, may still be seen.

LES CHENEAUX, famous as a fishing ground, is a most attractive summer resort as well. Hundreds of people each year spend their entire summer outing at this place, enjoying to the full the excellent fishing and bathing, as well as numerous lunch and sailing parties.

The region is ideal for boating, as the channels offer long reaches for a sail and the islands so protect that a sudden squall, so frequent and so dangerous on the lake, are here robbed of their terrors.

Many beautiful summer homes are scattered along the steamer route and several excellent hotels offer ample accommodations to the summer visitor. The hotels are equipped to provide fishermen with boats, guides, tackle, bait, and everything essential to a successful fishing trip.

DETOUR, at the mouth of the St. Mary's River, is a delightful place to while away a summer vacation. The hotels are good, and excellent fishing may be had in the near-



Bird's-Eye View of Locks



Shooting St. Mary's Rapids

by channels. From this point it is an interesting trip to Drummond Island. Here was an old British fort and the Island was one of the last bits of United States territory to be surrendered by the British after the war of 1812.

Remains of the old post buildings and roads may still be traced. The old post cemetery also is most interesting. The pine head boards with their ancient inscriptions are still standing to mark the final resting place of many of England's loyal sons.

ENCAMPMENT is a delightfully located resort on the main channel of the St. Mary's River. With all the other charms of a lake resort, it affords access to the most beautiful island scenery, and to the solitude of the primitive



Club Point, Les Cheneaux



New Steel Steamer "Chippewa"

forests. There is no better place in the "North Country" for bass fishing, and the place is fast coming into prominence as a favorite river resort, particularly with those who wish to come in close commune with nature.

SAULT STE. MARIE, the new metropolis of the West and the northern terminal of the Arnold Transit Company, is without question, one of the most interesting places on the lakes. The point first visited by all travelers is the ship locks, the largest in the world. There are three locks. Two, the Weitzel and Poe locks, on the American side, and one on the Canadian side. Another and larger lock is now under course of construction on the American side, as the present lock facilities are inadequate for the rapidly increasing lake commerce. During the season of navigation between 25,000 and 30,000 boats pass through the locks, an average of a boat every twelve minutes day and night. The Weitzel Lock, opened in 1881, is 515 feet long, 80 feet wide, and will lock through boats drawing

seventeen feet of water. The Poe Lock, opened in 1896, has a basin 800 feet between the gates, is 100 feet wide, and has a depth of 21 feet over mitre sills (the allowed draft of vessels). The lift is from 18 to 20 feet, according to the fluctuations of the upper and lower levels of the river.

Ore, grain, lumber, copper, flour, coal, and merchandise of every description are transported via the lake routes and pass through the locks at the "Soo." During the season of 1907, some 50,000,000 tons of cargo passed through the locks and the business is increasing from year to year. These figures convey but slight impression until one sees the continual procession of passing vessels, many of them from 500 to 650 feet in length, and carrying 10,000 tons at a single cargo.

More freight passes the "Soo" than enters the combined harbors of Boston, New York and San Francisco during the same time, and nearly three times as much as passes through the Suez Canal in a year.

An exciting novelty is the trip in a canoe, piloted by a native Chippewa Indian, down the St. Mary's Rapids. The sensations as one dashes along on the foam-crested billows, narrowly escaping this jutting rock or that swirling eddy, as the skillful pilots steer their light, bark canoe through the tumbling waters, are such as never to be forgotten. The records show the trip to be entirely safe, however.

A short distance above the locks on the river's edge may be visited the Michigan State Fish Hatchery. Here one may see, during the season, the method of propagating the whitefish fry, which later are to grow to be the finny beauties for which these northern waters are so famous.

If one has a taste for things military, Fort Brady, located in a commanding position above the locks, offers opportunity for close inspection. It has been occupied continuously as a military post since 1821. Four companies of infantry are stationed here. One's visit should be timed for witnessing dress parade or guard mount at sunset.

The Michigan Lake Superior power plant is also near the



Among the Channels, Les Cheneaux



Hay Lake Channel

steamer landing. Here, in a building a quarter of a mile long, may be seen 320 powerful turbine water wheels capable of developing 60,000 horse power. These turbines are coupled to immense dynamos, and the energy so generated is transmitted to the various industries about the "Soo."

One may take electric cars for a ride around the city to all the interesting places, or he may take the ferry, which is located a short distance from the steamer landing, for the trip over to Canada. The ferry makes trips every thirty minutes (fare 10 cents) and cars connect on the other side for the trip to the Canadian locks and the great mills and smelters of the Clergue industries.



Steamer "Islander"

The Canadian lock is 1,000 feet long, 60 feet wide, and can lock through vessels drawing 21 feet of water. Near the Canadian locks are the floor and foundations of the first lock on the continent, built by the Northwest Fur Company in 1790, to lock down the fur-laden canoes from the Lake Superior region.

The various mills of the Clergue Company are well worth an extended visit. The Lake Superior Power Company has developed 20,000 horse power. This is used by the Sault Ste.



The Old State Locks, 1855

Marie Pulp and Paper Company. The pulp mill has a capacity of 225 tons of pulp per day. There are also plants which manufacture bleaching powder and caustic soda from common salt, a ferro-nickel plant, blast furnaces for the manufacture of pig iron and a Bessemer steel plant, with a capacity of 800 tons of steel rails daily.

The blast furnaces and steel plant are the places which will take most of the visitor's attention. Here one may follow the various processes from the time the ore is placed in the reduction furnaces and the molten iron pours out and is cast into "pigs"; the remelting of these "pigs," the burning out of the impurities and final conversion of the crude iron into the finest steel billets, the moulding and annealing of these into "blooms" and the reheating and rolling and working of these cubes of incandescent metal until it is finally cooled and issues forth from the long series of rolls, a finished steel rail.

Night is the best time to visit the steel works, as it is then that the full grandeur of the scene is brought forth, and the pyrotechnic display as the sparks fly from the molten metal, is at its best. The giant machines take the white hot steel "blooms" from the ovens and pass them back and forth through the finishing rolls with the utmost precision, working with almost human intelligence.



AIRSHIP VIEW, ISLAND OF MACKINAC (By courtesy of the D. & C.)

- | | | | | | |
|---------------------|--------------------|---------------|----------------------|------------------------------|-------------------------|
| 1 Fort Mackinac | 5 Skull Cave | 9 Cliffs | 13 Battlefield, 1814 | 17 Devil's Kitchen | 21 Distillery, 1812 |
| 2 Fort Holmes | 6 Quarry, 1780 | 10 Arch Rock | 14 Scott's Cave | 18 Pontiac's Lookout | 22 Grand Hotel |
| 3 Catholic Cemetery | 7 Limekiln, 1780 | 11 Sugar Loaf | 15 British Landing | 19 Obelisk | 23 Union Steamer Wharfs |
| 4 Military Cemetery | 8 Robinson's Folly | 12 Skull Rock | 16 Lover's Leap | 20 Old Indian Burying Ground | 24 Lake Shore Boulevard |



1910 TIME-TABLES 1910

Cheboygan, Mackinac Island, Sault Ste. Marie Route
Steel SIDE-WHEEL Steamer "CHIPPEWA" (new) **The Fast MAIL Steamer "ELVA"**

JULY 10TH TO SEPTEMBER 10TH

CHEBOYGAN TO "SOO"		CALLING PLACES		"SOO" TO CHEBOYGAN	
	*6 30 A. M.	Lv.	Cheboygan	Ar.	11 00 P. M.
	7 00		Pointe aux Pins		10 30
	7 30		Mackinaw City		
	\$7 50		St. Ignace		
	8 35		Mackinac Island		9 15
16 00 A. M.	11 00		D'Four		7 10
7 00			Raber		6 15 P. M.
8 15	12 20 P. M.		Encampment		5 50
11 00	2 15	Ar.	Sault Ste. Marie	Lv.	*4 30
					12 00

BEFORE JULY 10TH AND AFTER SEPTEMBER 10TH

CHEBOYGAN TO "SOO"		CALLING PLACES		"SOO" TO CHEBOYGAN	
	A 6 00 A. M.	Lv.	Cheboygan	Ar.	4 30 P. M.
	7 30		Pointe aux Pins		3 15
	8 00		St. Ignace		
	8 00		Mackinaw City		1 00
	9 00		Mackinac Island		10 30 A. M.
16 00 A. M.	11 45		D'Four		9 00
7 00	1 00 P. M.		Raber		6 15 P. M.
8 15	2 15		Encampment		4 45
11 00	4 00	Ar.	Sault Ste. Marie	Lv.	7 45
					3 50
					B 6 00
					12 00

* Daily. † Daily except Sunday. § Via Island Transportation Co. ‡ Via "Snows" Route Steamer. A Sunday, Wednesday and Friday. B Monday, Thursday and Saturday

St. Ignace, Mackinac Island, Les Cheneaux Route
The Swift STEEL STEAMER "MACKINAC" (new) **Popular EXCURSION Steamer "ISLANDER"**

JULY 10TH TO SEPTEMBER 10TH

MACKINAC TO "SNOWS"			CALLING PLACES			"SNOWS" TO MACKINAC		
A. M.	P. M.	P. M.				A. M.	P. M.	P. M.
*8 50	*1 00	*2 45	Lv.	St. Ignace	Ar.	8 40	2 20	6 45
9 00	2 00	3 45		Mackinac Island		8 00	1 30	6 15
10 00	3 00	5 05		Hessel	Lv.	6 45		
10 15	3 15	5 20		Les Cheneaux Club		6 25		
10 25	3 25	5 30		Pennsylvania		**		
10 30	3 30	5 35		"Snows" Hotel		**		
**	**	**		Buckeye Dock		**		
10 45	3 45	5 50		Elliotts		6 05		
11 00	4 00	6 05		Islington		6 00		
**	**	**		Dunn Lodge		**		
11 30		6 30		Cedarville		5 45		
11 50	4 40		Ar.	Lakeside	Lv.	****	*11 50	* 4 40

MACKINAC TO ST. IGNACE				ST. IGNACE TO MACKINAC							
A. M.	P. M.	P. M.	P. M.	A. M.	A. M.	P. M.	P. M.				
* 8 00	*12 15	* 1 45	* 6 15	Lv.	Mackinac Island	Ar.	8 21	10 50	1 35	3 21	7 30
8 40	12 50	2 20	6 45	Ar.	St. Ignace	Lv.	*8 50	*10 15	*1 00	*2 45	*7 00

CHEBOYGAN TO MACKINAC		CALLING PLACES		MACKINAC TO CHEBOYGAN	
	* 6 30 A. M.	Lv.	Cheboygan	Ar.	* 11 00 P. M.
	7 00		Pointe aux Pins	Lv.	10 30
	8 00		Meck nae Island	Lv.	* 9 30

BEFORE JULY 10TH AND AFTER SEPTEMBER 10TH

ST. IGNACE TO "SNOWS"			CALLING PLACES			"SNOWS" TO ST. IGNACE		
A. M.	P. M.	P. M.				A. M.	P. M.	P. M.
* 8 15	A. M.	† 5 30	Lv.	St. Ignace	Ar.	7 50	A. M.	6 20
9 00		6 05		Mackinac Island	Lv.	*7 15		4 45
**		**		Hessel		**		2 05
**		**		Les Cheneaux Club		**		**
**		**		Pennsylvania		**		**
**		**		"Snows" Hotel		**		**
**		**		Buckeye Dock		**		**
**		**		Elliotts		**		**
**		**		Islington		**		**
**		**		Dunn Lodge		**		**
11 30	P. M.		Ar.	Cedarville	Lv.		† 1 00	P. M.
**		**		Lakeside		**		**

* Daily. † Daily Except Sunday. ** Stop on Signal. § Island Transportation Co. The Company reserves the right to change these schedules without notice, and does not hold itself responsible for delays.
 NOTE.—Steamer will stop at Pointe aux Pins only on signal.



CONNECTIONS

CHEBOYGAN

Detroit & Mackinac Ry. for Alpena, Bay City, Saginaw and Detroit.
 Michigan Central R. R. for Bay City, Detroit, Buffalo and the East.
 Inland Route Steamers for the Inland trip to Oden and Petoskey.

MACKINAW CITY

Grand Rapids & Indiana Ry. for Grand Rapids, Ft. Wayne, Cincinnati and Chicago.
 Michigan Central R. R. for Detroit, Toledo, Buffalo and the East.

ST. IGNACE

Duluth, South Shore & Atlantic Ry. for Marquette, Houghton, Duluth and the Copper Country.

MACKINAC ISLAND

Detroit & Cleveland Navigation Co. for Detroit, Toledo, Cleveland and Buffalo.
 Erie & Western Transportation Co. (Anchor Line) for Detroit, Cleveland and Buffalo.
 Green Bay Transportation Co. for Green Bay and Way Ports.
 Island Transportation Co. ferry steamers to Mackinaw City.
 Northern Michigan Transportation Co. for Manistee, Ludington and Chicago.
 Northern Steamship Co. for Detroit, Cleveland and Buffalo.
 Northern Navigation Co. for Owen Sound, Collingwood and the Georgian Bay.
 Goodrich Transit Co. for Chicago and the west shore of Lake Michigan ports.

SAULT STE. MARIE

Algonia Central & Hudson Bay Ry. for the Michipicoten Country.
 Canadian Pacific Ry. for Montreal, Quebec, Winnipeg and the West.
 Canadian Pacific Steamers for Owen Sound, Ft. William and Port Arthur.
 Duluth, South Shore & Atlantic Ry. for Marquette, Houghton and Duluth.
 Erie & Western Transportation Co. (Anchor Line) for Marquette, Houghton and Duluth.
 Minneapolis, St. Paul & Sault Ste. Marie Ry. for St. Paul and Minneapolis.
 Northern Navigation Co. for Port Arthur, Ft. William and Duluth.
 Northern Steamship Co. for Houghton and Duluth.
 United States & Dominion Transportation Co. for north shore of Lake Superior and local ports in Georgian Bay to Owen Sound.
 Star-Cole Line for Detroit, Toledo and Cleveland.
 Local steamers for Grand Marais and Way Ports and Thessalon and Way Ports.
 Chicago & Duluth Transportation Co. (Freight only) for Duluth.



Fort Brady, Soo, Mich.



GENERAL OFFICES

Mackinac Island, Mich.

OFFICIALS

GEO. T. ARNOLD,
GEO. L. CRAIG,
HENRY HOFFMAN,
FRANK BREUCKMAN,
H. L. ARNOLD,
MICHAEL DOUD,
MUN MCCARTY,
WM. MCCARTY,
A. L. GRAVES,

President and Manager
Vice-President
Secretary & Gen. Counsel
Treasurer & Asst. Secretary
Traffic Manager
General Passenger Agent
General Freight Agent
General Superintendent
General Baggage Agent

LOCAL AGENTS

CHEBOYGAN,
MACKINAW CITY,
MACKINAW CITY,
ST. IGNACE,
MACKINAC ISLAND,
DETOUR,
RABER,
SAULT STE. MARIE, MICH.,
SAULT STE. MARIE, ONT.,
HESSEL,
CEDARVILLE,
PETOSKEY,

R. E. Matt, McArthur's Dock
E. C. Amphlett, G. R. & I. R. R.
H. Z. Galbraith, M. C. R. R.
W. G. Miller, D. S. S. & A. Ry.
Union Ticket Office & Dock
Detour Dock Co.
Mud Lake Lumber Co.
Geo. Kemp Coal Co.
Carney & Taylor
Fenlon Bros.
H. P. Hossack & Co.
A. D. Phelps, G. R. & I. Ry.

GENERAL INFORMATION

TICKETS All tickets are for transportation only, meals and berths extra. Through tickets to all important points are on sale at the principal offices of this Company, and tickets routed via **Arnold Transit Company** may be obtained at principal railway, lake and river steamer ticket offices in the United States and Canada. The annoyance of purchasing tickets, transfers, re-checking baggage, and many times money, is saved by the purchase of through tickets.

All tickets, unless otherwise limited, are good until close of season, as indicated in schedule.

Local or coupon tickets of this Company's issue that have not been used, or only a portion of such tickets having been used, when of any value will be redeemed through the general office at Mackinac Island, in accordance with established rules.

Lost or stolen tickets cannot be duplicated or money refunded thereon.

Passengers purchasing tickets, which for any reason they do not use in their entirety, should not attempt to dispose of them to unauthorized dealers, as this company will fully protect original purchasers from loss in cases where for satisfactory reasons the tickets are not used, giving the full value of the unused portion of such tickets on a proper basis.

The unused portion of tickets issued by other lines should be sent to the general passenger agent of issuing line for redemption.

STOP-OVER CHECKS Good within limit of ticket, will be issued, on notice to purser, at Mackinac Island and DeTour, to holder of regular first-class Summer

Tourist Tickets. Stop-over checks are not transferable and will not be accepted after date of expiration. Refunds will not be allowed on stop-over checks. Tickets sold over connecting lines are subject to the regulations of the line over which they read.

CHILDREN Under five years of age, in charge of a competent person, are carried free. Those five years of age and under twelve, half fare. Those twelve years of age and over, full fare. This rule is rigidly enforced.

BAGGAGE Personal baggage not exceeding one hundred fifty pounds on each full ticket, and seventy-five pounds on each half ticket, will be carried free; all in excess of the above will be charged for in accordance with excess tariff in effect. Baggage will be checked through to all points to which tickets are sold.



Bicycles, baby cabs, sportsmen's outfits, including dogs and guns, carried only at owner's risk. **Dogs or other pets are not allowed in cabins or staterooms under any circumstances,** but will be cared for in baggage room.

Passengers are requested to have baggage ready to be checked at baggage room at least thirty minutes before sailing hour of steamer, and as a matter of ordinary precaution, the owner's name and address should appear thereon.

MEALS On the steamer "Chippewa" of the "Soo" route, are served a la carte at popular prices. No meals are served on the steamers of the Les Cheneaux Division.

SPECIAL In event of any disagreement with the purser, relative to tickets required, privileges allowed, etc., passengers should pay the purser's claim, take his receipt, and refer case for adjustment to the general passenger agent, who will promptly refund any overcharge. The purser has no discretionary powers in such matters, but is governed by rules which he is not authorized to change.

STATEROOMS There are no staterooms, as all different trips are made in a day or less. However, there are a limited number of parlors on the steamer "Chippewa" fitted with all modern and up-to-date conveniences, such as Pullman berths, electric call bells, telephones, hot and cold water, etc. Prices range from \$3.50 to \$5.00 each.

BUFFET AND LUNCH-ROOM There is a well appointed Buffet and Lunch Room on the steamer "Chippewa," in charge of competent and courteous attendants. A full line of choice wines, liquors and cigars has been selected for the Buffet. The service in the lunch room is first-class in every particular and everything served is of the highest quality.

PASSENGER FARES

BETWEEN		Cheboygan	Pointe Aux Pins	Mackinaw City	Mackinac Island	St. Ignace	DeTour	Raber	Encampment	Neebish	Sault Ste. Marie
PT. AUX PINS	One Way	\$0 25									
	Round Trip	50									
MACKINAW CITY	One Way	\$0 50	75								
	Round Trip	1 00	1 25								
MACKINAC ISLAND	One Way	\$0 75	75	50							
	Round Trip	1 25	1 25	1 00							
ST. IGNACE	One Way	\$1 00	1 00	50	25						
	Round Trip	1 50	1 50	1 00	50						
DETOUR	One Way	\$1 50	1 50	1 50	1 50	1 75					
	Round Trip	2 50	2 50	2 50	2 50	3 00					
	2nd Class	1 00	1 00	1 00	1 25					
RABER	One Way	\$1 75	1 75	1 75	1 75	2 00	50				
	Round Trip	3 00	3 00	3 00	3 00	3 50	1 00				
ENCAMPMENT	One Way	\$2 50	2 50	2 50	2 00	2 25	1 00	75			
	Round Trip	5 00	5 00	5 00	4 00	4 50	2 00	1 25			
NEEBISH	One Way	\$2 50	2 50	2 50	2 00	2 25	1 00	75	50		
	Round Trip	5 00	5 00	5 00	4 00	4 50	2 00	1 25	1 00		
SAULT STE. MARIE	One Way	\$3 00	3 00	2 50	2 50	2 50	1 50	1 50	75	75	
	Round Trip	5 00	5 00	4 50	4 50	4 50	2 50	2 50	1 25	1 25	25
	2nd Class	2 00	2 00	2 00	2 00
HESSEL, CEDARVILLE & SNOWS PTS.	One Way	\$1 50	1 50	1 25	75	1 00	2 25	2 50	2 75	2 50	25
	Round Trip	2 50	2 50	2 25	1 25	1 75	3 75	4 25	5 25	5 25	75

Season 1910
Local Passenger Fares
Arnold Transit Co.

Connecting Route for
Tourist Travel to Sault
Ste. Marie, Lake Superior and the Canadian Northwest.



THE

New Murray Hotel

MACKINAG ISLAND, MICH.

Rates \$2.50 to \$3.00

Weekly Special

AMERICAN PLAN

LOCATED ON MAIN STREET

Near Passenger Wharf

J. W. MURRAY

MANAGER

HICKLER HOUSE

Sault Ste. Marie, Mich.

Corner Portage Ave. and Johnstone St.

BUFFET AND BARBER SHOP

ROBERT J. WYNN, Prop.

American Plan

Rates \$2.00 per day up

☑ Rooms have steam heat, hot and cold water, lavatory, electric lights, telephones. All are outside rooms. Good bath rooms on every floor. Private baths in double rooms.

☑ The only hotel in the city where you can take a car to any part of the city without transferring.

☑ Located two blocks from ferry dock, one block from steam-boat landing. A three minute ride to depot.

SPECIAL RATES TO MONTHLY BOARDERS

LIST OF HOTELS AND BOARDING HOUSES

Name of Hotel and Manager	Capacity	Per Day	Per Week
SAULT STE. MARIE, MICH.			
*New Park Hotel, James R. Hayes	100	\$2 50 to \$3 00	Special
*Hotel Belvedere, P. R. Downey	100	1 25 to 2 00	7 00 to \$10 00
Franklin House, Geo. H. Cook	75	1 00 to 1 50	Special
*Sherman House, W. J. Hanley	100	1 00 to 1 50	5 00 to 7 00
*Murray Hill Hotel, J. W. McTavish	200	American and European Plan	Special
Hickler Hotel, Robert J. Wynn	75	2 00 to 2 50	10 00 to 12 00
SAULT STE. MARIE, ONT.			
International Hotel, J. S. Miller	100	2 50 up	Special
Cornwall Hotel, M. F. Goodwin	100	1 50 to 2 50	"
Algonquin Hotel, H. E. Leland	75	2 00 to 2 50	"
Le and Hotel, E. J. Gaudet	60	1 50 to 2 50	"
Windsor Hotel, N. McDougal	75	1 50 to 2 50	"
Victoria Hotel, A. McKinnon	60	2 00	"
ENCAMPMENT, MICH.			
*Hotel & Cabins, Mrs. Hugh Kenelpp, P. O. Neebish, Mich.	75	2 00	"
DETOUR, MICH.			
*Hotel Detour, John F. Goetz	100	2 00	9 00
DRUMMOND, MICH.			
*Seastone Island, The Seastone Co.		2 00 up	Special
CEDARVILLE, MICH.			
*Hodeck House, V. Hodeck	100	1 50 to 2 00	"
LES CHENEAUX, MICH.			
*Islington Hotel, Mrs. R. S. Melchers	125	3 00 to 4 00	17 50 up
*Elliot House, John W. Beach	100	2 00 to 3 00	10 00 to 15 00
*New Les Cheneaux Hotel, F. W. Meyer	75	2 50	15 00
Lakeside Hotel, John Coryell	75	2 00	Special
Pennsylvania Hotel, Samuel Melk	50	2 00	"
Les Cheneaux Club, A Mutual Association	100	Only guests introduced by members take	"
HESSEL, MICH.			
*Buchanan Cottages, Mrs. C. N. Buchanan			10 00 to 15 00
MACKINAC ISLAND, MICH.			
*Grand Hotel, Hay-Gaines	1000	3 00 up	Special
*Island House, Mrs. Rose Van A. Webster	400	2 50 up	"
*Chippewa Hotel, Geo. T. Arnold	250	European plan only, 2 50 up	"
*Astor House, Harry Gable	250	2 00 to 3 00	"
*New Mackinac Hotel, Hogan Bros.	250	2 50 to 3 00	"
*Lake View Hotel, C. C. Cable	225	2 50 to 3 00	"
*Mission House, Mrs. S. R. Franks	200	2 50 to 3 00	"
*New Murray Hotel, J. W. Murray	200	2 50 to 3 00	"
*New Chicago Hotel, W. B. Hoban	75	2 00 to 3 00	"
Palmer House, Geo. T. Arnold	100	European plan	"
*Windsor Hotel, Mrs. E. Gallagher	100	3 00 to 3 00	14 00 up
Bennett Hall, Mrs. E. M. Bennett	100		14 00 to 20 00
*Doud Cottage, Miss Mary Doud	100	2 00 to 3 00	16 00 to 20 00
*Lachance Cottage, B. Lachance	75	2 00 to 2 50	14 00 to 17 50
*Pine Cottage, Mrs. Thos. Gallagher	80	2 00 to 2 50	12 00 to 17 00
*Iroquois Hotel, S. B. Poole	75	2 00 up	12 00 to 16 00
*Hoban Cottage, Miss A. Hoban	60	2 00 to 2 50	12 00 to 17 00
*Cameron Cottage, Mrs. M. F. Cameron	50	Special	Special
Terrace Cottage, Mrs. P. Kerrigan	25	1 50	10 00
*Sunnyside Cottage, Mrs. E. Bailey	35	1 50 to 2 00	10 00 to 14 00
Enterprise Cottage, Mrs. P. McCormick	25	2 00	10 00
Ivanhoe Cottage, Mrs. Emily Haines	25		
*La Salle Lodging Apartments, Mrs. F. H. Lasley	65	Rooms only	Special
*Marquette Flats, Bogan Bros.	75	Rooms only	"
ST. IGNACE, MICH.			
*Hotel Cadillac, C. Y. Bennett	300	3 00 to 4 00	"
Dunham House, J. M. Campbell	60	2 00	8 00 to 10 00
*Hotel Leclerc, Whitwell Bros.	75	2 00	8 00 to 12 00
POINT AUX PINS, MICH.			
The Pines Hotel, Point aux Pins Association	150		12 00 to 18 00
CHEBOYGAN, MICH.			
New Cheboygan Hotel, St. Armour Bros.	150	2 00 up	Special
Spencer House, Perrett & Hubbard	100	1 25 to 1 50	"
Summit House, R. N. Hyde	50	1 00 to 1 50	"
MACKINAW, MICH.			
Wentworth Hotel, Michigan Central Railroad	100	1 50	
Stimson House, D. Smith & Sons	100	1 00	
Mackinaw City House, Mrs. A. Ranville	25	1 00	
Lakeside Hotel, L. J. Gehl	50	1 50	7 00
HARBOR SPRINGS, MICH.			
*Harbor Point Club House, F. H. Irish		3 00 to 5 00	14 00 to 20 00
*Forest Beach Inn, F. H. Irish			
Roaring Brook Inn, Thos. J. Leahy	100	2 50 up	15 00 up
Emmet House	300	2 50	Special
The New York	100	2 50	"
Ramona Park Hotel	400	2 50	"
PETOSKEY, MICH.			
*New Arlington, S. H. Peck	800	1 00 up	"
Cushman, W. L. McManus, Jr.	300	2 50 up	15 00 up
Clifton Hotel	100	1 00 to 1 50	Special
Oriental	75	1 00 to 1 50	"
Hotel Perry, N. J. Perry	150	2 00 to 3 50	14 00 to 21 00
Park House	75	1 50 to 2 00	Special
New Central Hotel, G. C. Parkis	40	1 50 to 2 00	6 00 to 10 50

NOTE:—Hotels marked thus * have an advertisement in this folder.

BUCHANAN COTTAGES

LES CHENEAUX ISLANDS

Tucked away in a sheltering cove of Lake Huron is the little town of Hessel, Mich., fourteen miles north, by water, from Mackinac Island.

In this almost primeval country Mrs. Nathalie C. Buchanan has built two rustic cottages whose wide verandas, swept by the clean, fragrant odors of the northland and the clear, cool breezes of Lake Huron, offer an ideal place for rest, comfort, and recreation.

For Terms Address

MRS. NATHALIE GLAIBORNE BUCHANAN

1362 Second Street, Louisville, Ky.

After June 1st, Hessel, Mich.

PINE COTTAGE

MACKINAC ISLAND, MICH.

One Block West of Catholic Church

PRIVATE BOARD RATES REASONABLE

All Modern Improvements

Fine View of the Lake

Mrs. Thos. Gallagher, Proprietor

SUNNYSIDE COTTAGE

MACKINAC ISLAND, MICH.

PLEASANTLY LOCATED

MODERN CONVENIENCES

FIRST CLASS SERVICE

REASONABLE RATES

MRS. ETTA M. BAILEY, PROP.

NEW MACKINAC HOTEL

MACKINAC ISLAND, MICH.

NEW MANAGEMENT

STRICTLY FIRST CLASS

REFURNISHED THROUGHOUT

Rates \$2.50 to \$3 00 per day

DIRECTLY OPPOSITE STEAMER LANDING

American Plan

BOGAN BROS., PROPRIETORS

THE "MARQUETTE"

MACKINAC ISLAND, MICH.

ROOMS ONLY

Located on Main Street, one block north of steamer landing. ❁ ❁

OPPOSITE MARQUETTE PARK
ALL MODERN CONVENIENCES

For Rates and Reservations, address

BOGAN BROS.,
P R O P R I E T O R S

HOTEL LECLERC

ST. IGNACE, MICH.

FAMILY and COMMERCIAL HOTEL

Newly Fitted and Remodeled



FIRST CLASS SERVICE

MODERN CONVENIENCES

Michigan's Famous Hay Fever Resort

\$2.00 per day; \$8.00 to \$10.00 per week

WHITWELL BROS., PROPRIETORS

HODECK HOUSE

Cedarville, Mich.

Pleasantly Located

First Class Service

Open from

The first of May to the first of November

Rates \$1.50 to \$2.00 per day

For further Information, Address

VANCEL HODECK,

Proprietor,

Cedarville, Mich.

Mission House

Mackinac Island, Mich.



The Missionary Pioneer House of the "Fairy Isle," Old, Substantial, Unique and Comfortable. Modern Sanitary Plumbing. Rates \$2.00 to \$3.00. Special by the week.

MRS. S. R. FRANKS, Proprietor

NEW CHICAGO HOTEL

Mackinac Island, Mich.



All Modern Conveniences

Service Unexcelled

Accommodations for 75 Guests

Centrally Located

Livery in Connection

\$2.00 to \$3.00 per day. Special by the week

W. B. HOBAN, Prop.

LA SALLE LODGING APARTMENTS

MACKINAC ISLAND, MICH.



In the new Lasley Block just completed, located on Main Street near steamboat landing, overlooking the harbor, and in full view of the arrival and departure of all steamboats. New furnishings throughout. Reasonable rates.

MRS. S. H. LASLEY, Prop.

John Jacob Astor House

MACKINAC ISLAND, MICH.

Originally the Headquarters of the American Fur Co.

Pleasantly Situated Rooms Large and Airy
All Modern Improvements

RATES \$2.00 TO \$3.00 SPECIAL BY THE WEEK
HARRY GABLE, Manager

HOBAN COTTAGE

MACKINAC ISLAND, MICH.



CENTRALLY LOCATED

Open from June 1st to
October 1st

Accommodations for 50 Guests

HOT WATER HEAT

\$2.00 to \$2.50 per day

\$13.00 to \$17.00 per week

MISS AMANDA HOBAN, Prop.

THE ELLIOT HOUSE

LES CHENEAUX, MICH.



The PREMIER FISHING and HEALTH RESORT

FISHING, BOATING and BATHING

Rates, \$2.00 to \$3.00 per Day

BEACH & BLUMENSTIEL, Props.

\$10.00 to \$15.00 per Week

JOHN W. BEACH, Mgr.

Hotel Belvedere

SAULT STE. MARIE, MICH.



Busses from all Trains and Boats

AMERICAN PLAN RATES \$1.50 and \$2.00

Steam Heated

Electric Lighted

P. R. DOWNEY, Prop.

Harbor Point Club House

AND

Forest Beach Inn

Harbor Springs, Mich.

Delightful Resorts

For Particulars and Reservations, Address

F. H. IRISH, Harbor Springs, Mich.

THE GRAND HOTEL

MACKINAC ISLAND, MICH.

Open June 30, 1910

Operated by the
Hay-Gaines Syndicate
in connection
with the
PLANTERS
and
JEFFERSON
HOTELS
St. Louis, Mo.
ARLINGTON
and
EASTMAN
HOTELS
Hot Springs, Ark.



Under direct manage-
ment of
Lyman T. Hay
and
John R. Bogan
AMERICAN PLAN
Rates
\$3.00 per day up
EUROPEAN PLAN
Rates on
Application

THE IMPROVEMENTS at the **Grand Hotel** will approximate several thousand dollars this year and will make **Mackinac Island** a more delightful summer retreat than ever.

The vast exterior of this hotel has been newly painted a spotless white, the interiors redecorated to date, and the **Casino** transformed with ivory and gold into a beautiful hall.

A new feature, or features, of the popular casino this season will be found in the form of a dozen **Private Boxes** beneath the balconies for private or invited guests. There are six of these boxes on either side of the ball floor, harmoniously finished in ivory and gold, with rich red rugs and draperies.

Throughout the season there are to be formal **Hops** every Wednesday and Saturday nights, and impromptu **Dancing** every evening. A sixteen piece **Orchestra** of string and brass instruments has been engaged for the daily **Concerts** and social functions.

The Grand Hotel is conducted upon the **American Plan** in the most bountiful manner, at \$3.00 upwards per day, but the **European Plan** is also in vogue for those who prefer it, with an a la carte cafe and this cafe occupies the boulevard floor, overlooking the **Terrace, Tennis Court** and **Lake**.

PARK HOTEL

SAULT STE. MARIE, MICH.

Open all the Year

Leading Hotel of the "Soo"

J. R. HAYES,
Proprietor

A. E. MARRIOTT,
Manager

Wayne Hotel and Gardens

DETROIT, MICHIGAN

Opposite M. C. R. R. Passenger Station

Only First Class Hotel in the City

Overlooking the Beautiful

Detroit River

Popular Orchestras

Musical Specialties and Singers

UP TO DATE CAFES

EUROPEAN PLAN

Modified a la Carte Service

J. R. HAYES - - - - Proprietor

Park Hotel and Bath Palace

HOT SPRINGS, ARK.

Finest Equipped Hotel
and Bath House in
Hot Springs.

American and Euro-
pean Plans.

J. R. HAYES, - - - - Proprietor



Dining Hall

Encampment

A PICTURESQUE
ISLAND RESORT

**Hotel and Fur-
nished Cabins**

\$2.00 per day
Weekly Rates

Address

MRS. HUGH KENEIPP
Neebish, Mich.



A Cabin

The Islington Hotel

Les Cheneaux Islands, Mich.



For the best Fishing, Boating, Sailing, and every other pleasure and pastime of Summer, we recommend **THE ISLINGTON, Les Cheneaux Islands.** Strictly **FIRST CLASS**; eighty rooms; beautiful grounds, tennis, bathing beach, etc. Two hours' delightful ride from **Mackinac Island.** Three boats daily. **Rates \$2.50 to \$3.50 per day.**

For further information address

R. S. MELCHERS, Les Cheneaux, Mich.

Iroquois-on-the-Beach

MACKINAC
ISLAND

S. B. POOLE, Proprietor

Open
April 1st to December 1st

RATES
\$2.00 to \$3.00
per day

Special by the Week



House New
Rooms Large

MODERN
CONVENIENCES

Furnace
Heat When Needed

Located on the beach two blocks south of steamer landing. Overlooking the Harbor and commanding an unobstructed view of the entire Straits of Mackinac. Dining room fronting the lake. All the conveniences of a first class hotel with the comforts of home

New Les Cheneaux Hotel

LES CHENEAUX ISLANDS, MICH.



REMODELLED and REFURNISHED

The most centrally located and best Fishing Spot in the "Snows." An ideal place to spend your vacation
COTTAGES FOR RENT BUILDING LOTS FOR SALE
LAUNCHES, SAIL-BOATS AND ROW BOATS

Telegraph and long distance telephone

\$2.50 per day, \$15.00 per week. Special by month or season

F. W. MEYER, Prop.

Hotel DeTour

DETOUR, MICH.



First Class in every Particular

35 Rooms

Private Water System

Trout Streams in vicinity

Boats and Guides

Black Bass in abundance

An ideal place for rest and quiet

NO HAY FEVER

Rates \$2.00 per day

Special by the week

J. F. GOETZ, Proprietor

A Splendid
Orchestra in
Connection
With this Hotel

Hops in Casino
Three Times
a Week

Cool Broad Verandas
Overlooking the
Harbor and Straits

Lawn Tennis Courts

=====
Mrs. Rose Van A. Webster,
Proprietor



The Island House

MACKINAC ISLAND, MICH.

Situated in the Finest Residential Part
of the Island

Rates \$2.50 to \$5.00 per day
Special Weekly

Accommodations for 250 Guests

A New and
Beautifully Appointed
Dining Room Affords
Seating Accom-
modations for the full
Capacity of the Hotel

Rooms in Suite
with
Private Bath

=====
Deeply Shaded Lawns

=====
Walter P. Hill,
Manager

SHERMAN HOUSE

Sault Ste. Marie, Mich.

ALL MODERN IMPROVEMENTS

American Plan Newly Furnished

RATES

\$1.00 to \$1.50 per day \$5.00 to \$7.00 per week

W. J. HANLEY, Prop.

Cameron Cottage

Mackinac Island, Mich.

Modern Conveniences
Reasonable Rates
Home Cooking

MRS. M. F. CAMERON, Prop.

Lachance Cottage

MACKINAC ISLAND, MICH.



Overlooking from all of the three porches and from every window in the house the entire harbor and the Straits of Mackinac.

ALL MODERN IMPROVEMENTS

Lighted by Electricity Hot and Cold Water on Every Floor

Rates \$2.00 per day and up

BENONI LACHANCE - - - Proprietor

SEASTONE

Drummond, Mich.



Seastone Island

Should you wish a happy summer,
In the land of Hiawatha,
One of rest and fun together,
One of pleasure and of quiet,
Sunny days with breezes balmy,
Quiet evenings, peaceful slumber,
Come to "Seastone," 'mid the Islands,
Come to "Seastone" on the lake shore.

Here the air is fresh and bracing,
Sweet the music of the water
Lapping on the rounded pebbles,
Soft the sighing of the balsams.
Woodland paths are cool and shady,
Sandy bathing beaches, splendid,
Great the beauty of the sunsets.
Sets the sun in robes of splendor,
Sometimes pale and soft and gauzy,
Sometimes bold and bright and fiery.
And on quiet nights the water
Shines and sparkles in the moonlight,
Waits for light canoes and rowboats.
Pleasures novel, hunting, fishing,—
Great black bass the waters darken,
And with trout the streams are crowded.

On the dark nights.—Oh! the corn roasts,
On the shore beside the water,
Oh! the jolly times,—the feasting,
Talking, singing, story-telling,
'Round the bonfire, flickering, flaring,
With its glow on happy faces,
And the laughter and the music
Echo soft among the islands.

Such the sights and sounds of "Seastone,"
'Tis a spot ideal in summer.



Wigwam

CABINS, BARK LODGES,
WIGWAMS

DAILY MAIL

Rates \$2.00 per day up

Special Weekly Rates on Application

THE SEASTONES, Proprietors

WINDSOR HOTEL

Mackinac Island, Mich.



Centrally Located Newly Fitted and Remodeled

Capacity for Seventy-five Guests

Rates \$2.00 to \$3.00 per day

Special Rates by the Week

MRS. BELLE GALLAGHER, Proprietor

DOUD COTTAGE

MACKINAC ISLAND, MICH.

Near Grand Hotel

All Modern Improvements
Table Unsurpassed

Beautiful Lawn and Shade Trees,
Tennis

Rates \$2.00 to \$3.00 per day

Special by the Week



MISS MARY DOUD, Prop.

LAKE VIEW HOTEL

Mackinac Island,
Mich.

Open June 1, to Oct. 1

Rates

\$2.50 and \$3.00

American Plan

C. C. CABLE, Prop.



MURRAY HILL HOTEL

SAULT STE. MARIE, MICH.



American and European Plan
OPEN DAY AND NIGHT

Most centrally located hotel in the city. 100 rooms. Steam heat. Electric lights. Return call bell system. Free sample rooms. American plan \$2.00 to \$2.50. European plan 75 cents, \$1.00 and \$1.50. Special rates by the week. Gents' cafe, seating capacity 75. Ladies' and gents' cafe, seating capacity 50. Elevator service. Turkish bath. Swimming pool 10 x 30 feet, six feet pure Lake Superior water.

BILLIARD and POOL ROOM and CIGAR STORE

J. W. McTAVISH, Prop.

HOTEL CADILLAC

ST. IGNACE, MICH.

STRICTLY FIRST CLASS

Electric Lights. Steam Heat

HOT AND COLD BATHS

Rates \$3.00 to \$4.00 per day

Special Rates by the Week
on application.

C. Y. BENNETT, - - Proprietor

NEW ARLINGTON HOTEL

PETOSKEY, MICHIGAN

Petoskey's Newest, Finest and Most Up-to-Date Hotel

ONLY RESORT HOTEL IN PETOSKEY

EUROPEAN PLAN

Rooms Exclusively \$1.00 per Day and up. Meals Served a la Carte from 6 a. m. to 12 p. m. VISIT the Finest European Dining Room in Northern Michigan. Fischer's World's Fair Orchestra, Noon and Evenings. Everything Guaranteed First Class.

S. H. PECK

- - - - Proprietor

CHIPPEWA HOTEL

MACKINAC ISLAND, MICH.

EUROPEAN PLAN

OPEN

June to October



Lobby



Cafe



Chippewa Hotel and Fort Mackinac, from the Lake

OVERLOOKING the beautiful Straits of Mackinac and in full view of the arrival and departure of the finest passenger steamers afloat.

THE Office, Buffet and other departments are in charge of experienced and courteous officers ever on the alert to attend to the smallest want.



A Chippewa Indian

IT IS our aim to make the Chippewa one of the most popular hotels on the Island, catering to first-class trade, which the appointments of the house warrant. Equipped with all modern conveniences, hot and cold water in every room, also 25 rooms with bath and en suite. Broad verandas from each floor overlooking the Straits afford an ideal resting place. The Cafe, fronting the water is cooled by the breezes from the lakes, making it a tempting place to dine, where you will find the best the market affords, prepared and served by competent hands.



Chippewa Indians

FIRST CLASS ORCHESTRA

GEO. T. ARNOLD
OWNER AND PROPRIETOR

JAS. A. GLODREY
MANAGER